



UPGRADE YOUR

LQ – LIFESTYLE

QUOTIENT

Better plans with better design

VTP Leonara
VTP Bel Air
VTP Alpine
VTP Town Square
are a part of 100+ acres
Township Codename
"Blue Waters"

Premium 1, 2, & 3 Bedroom Homes
& Commercial Spaces

#UPGRADE TO THE VTP REALTY EXPERIENCE



BETTER DESIGN



BETTER BUILD



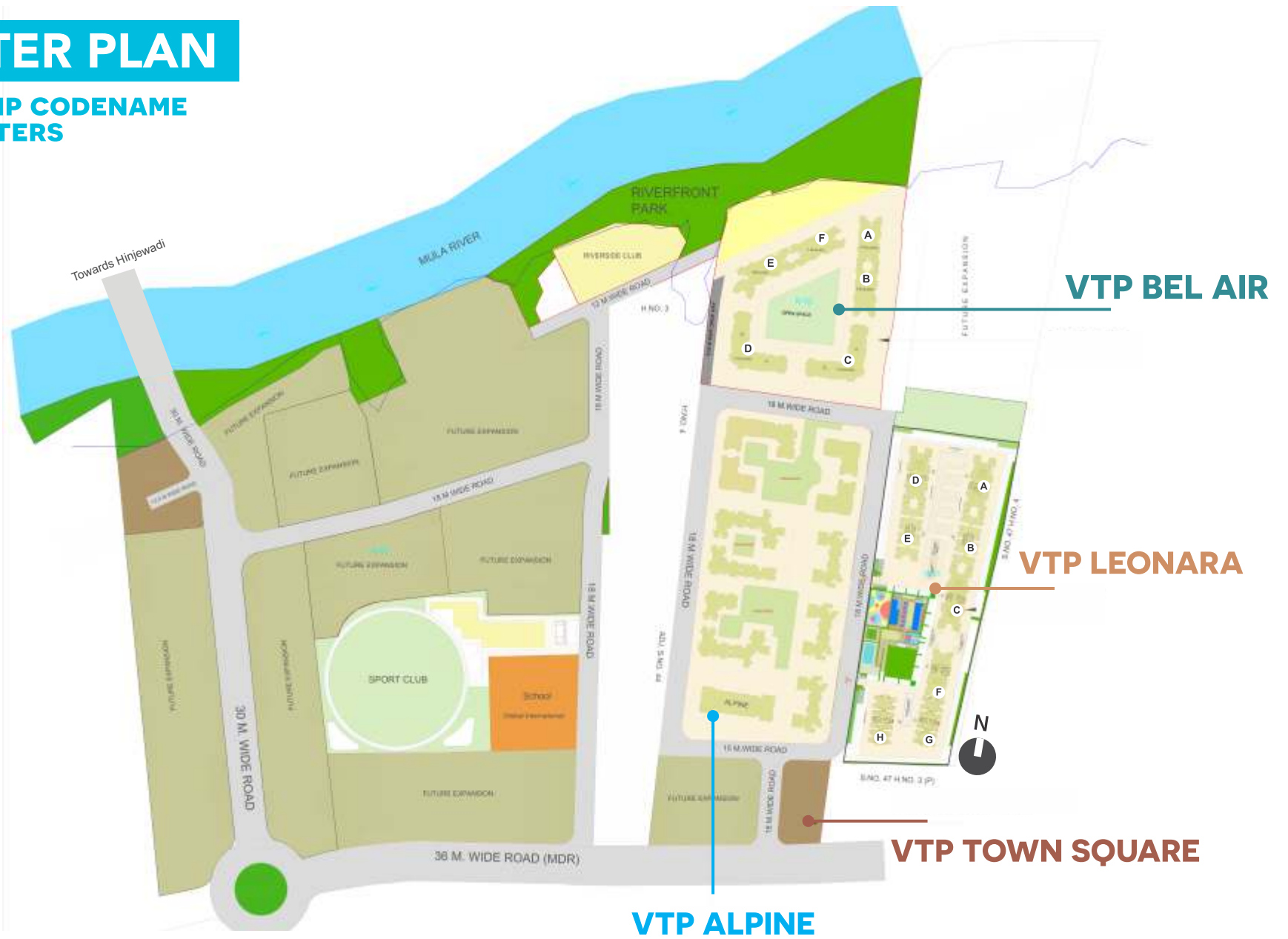
BETTER CARE

All the project plans have been compiled together in one booklet for your easy reference. Please go through the same along with the respective areas.

This will make your apartment selection much easier!

MASTER PLAN

TOWNSHIP CODENAME
BLUE WATERS



*All projects are mentioned here are indicative purpose only

**#SHINEON AT
VTP LEONARA**



AMENITIES

- Resort styled clubhouse entrance
- Party lawn
- Floating Gym
- 2 level clubhouse
- Two Swimming pools
(One infinity pool another leisure pool)
- Children's play area
- Amphitheatre
- Senior citizens corner
- Barbeque area

SPECIFICATIONS

Flooring

- Living, Dining, Kitchen - Glazed vitrified Tiles (800x800mm)
- All Bedrooms - Glazed vitrified Tiles (600x600mm)
- Dry Balcony & Terraces- Anti-skid ceramic Tiles

Toilets

- CP fittings – Jaquar/ Cera equivalent
- Flooring – Anti-skid tiles
- Designer Decorative dado Tiles up-to 7 feet
- Solar connection in master toilet
- Geysers point in other toilet

Kitchen

- Granite Kitchen platform
- S.S. Sink
- Ceramic/glazed tiles above kitchen platform 2ft
- Provision for water purifier

Doors & Windows

- Main door – Decorative entrance door with Veneer
- Internal doors – Laminated Flush door
- Laminated flush doors in Wash Rooms
- Toilet door frames in granite
- Powder coated aluminum sliding windows with mosquito net
- S.S. glass railing to terrace

Electrical fittings

- Switches – Anchor/ legrand equivalent modular switches.
- Concealed copper wiring with M.C.B
- Adequate electric points with TV & Telephone points in living room, Master bed room
- AC points in all bedrooms
- 100% DG Back-up for lifts & Common area
- Provision for inverter

Plumbing

- Concealed anti-corrosive plumbing

Wall Finishes

- Plastic emulsion paint for internal wall
- Exterior – Superior quality Texture/apex/ protective paint

Automation

- Intercom Facility
- Video Door Phone

Structure

- Earthquake resistant RCC structure

VTP LEONARA LAYOUT PLAN





VTP LEONARA

Typical 1BHK Unit Plan



VTP LEONARA

Typical 2BHK Unit Plan



VTP LEONARA

Typical 3BHK Unit Plan



VTP LEONARA

A - BUILDING

ODD FLOOR PLAN

Floor Nos. - 1, 3, 5, 7, 9, 11, 13, 15, 17, 19, 21



Flat no.	Carpet area		Enclosed Balcony		TERRACE AREA	TOTAL CARPET AREA			
	in sq.m.	in q.Ht.	In SQ.M.	IN SQ.FT.	IN SQ.M.	IN SQ.FT.	IN SQ.M.	IN SQ.FT.	
101,301,501,701,901,1101,1301,1501,1701,1901,2101									
102,302,502,702,902,1102,1302,1502,1702,1902,2102									
107,307,507,707,907,1107,1307,1507,1707,1907,2107									
108,308,508,708,908,1108,1308,1508,1708,1908,2108	2BHK	50.43	547.83	9.90	106.78	3.16	34.01	63.51	683.62
103,303,503,703,903,1103,1303,1503,1703,1903,2103	2BHK	56.29	605.91	11.63	125.72	3.55	38.21	71.52	769.84
104,304,504,704,904,1104,1304,1504,1704,1904,2104									
105,305,505,704,905,1105,1305,1505,1705,1905,2105	3BHK	83.38	897.50	11.83	127.88	5.74	61.79	101.00	1087.16
106,306,506,706,906,1106,1306,1506,1706,1906,2106	2BHK	56.13	604.18	11.68	125.72	3.55	38.21	71.36	768.12



VTP LEONARA

A - BUILDING

EVEN FLOOR PLAN

Floor Nos. - 2, 4, 6, 8, 10, 12, 14, 16, 18, 20, 22

Flat no.	Çarpet area		Enclosed Balcony		TERRACE AREA		TOTAL ÇARPET AREA		
	in sq.m.	in q.Ht.	In SQ.M.	IN SQ.FT.	IN SQ.M.	IN SQ.FT.	IN SQ.M.	IN SQ.FT.	
201,401,601,801,1001,1201,1401,1601,1801,2001,2201									
202,402,602,802,1002,1202,1402,1602,1802,2002,2202									
207,407,607,807,1007,1207,1407,1607,1807,2007,2207									
208,408,608,808,1008,1208,1408,1608,1808,2008,2208	2BHK	50.43	542.83	9.92	106.78	3.16	34.01	63.51	683.62
203,403,603,803,1003,1203,1403,1603,1803,2003,2203	2BHK	56.29	605.91	1.68	125.72	3.55	38.21	71.52	769.84
204,404,604,804,1004,1204,1404,1604,1804,2004,2204									
205,405,605,805,1005,1205,1405,1605,1805,2005,2205	3BHK	83.38	897.50	11.88	127.88	5.74	61.79	101.00	1087.15
206,406,606,806,1006,1206,1406,1606,1806,2006,2206	2BHK	56.13	604.18	11.68	125.72	3.55	38.21	71.36	768.12





VTP LEONARA

C - BUILDING

ODD FLOOR PLAN

Floor Nos. - 1, 3, 5, 7, 9, 11, 13, 15, 17, 19, 21



FLAT NO.	TYPE	BASIC CARPET		ENCL. BALCONY		TERRACE		TOTAL CARPET	
		SQ.M.	SQ.FT.	SQ.M.	SQ.FT.	SQ.M.	SQ.FT.	SQ.M.	SQ.FT.
101, 301, 501, 701, 901, 1101, 1301, 1501, 1701, 1901, 2101	3BHK	82.70	890	12.48	134	5.75	62	100.93	1086
102, 302, 502, 702, 902, 1102, 1302, 1502, 1702, 1902, 2102	2BHK	55.59	598	12.2	131	3.56	38	71.35	768
103, 303, 503, 703, 903, 1103, 1303, 1503, 1703, 1903, 2103	2BHK	52.21	562	11.69	126	3.18	34	67.08	722
104, 304, 504, 704, 904, 1104, 1304, 1504, 1704, 1904, 2104	3BHK	76.86	827	11.72	126	5.16	56	93.74	1009
105, 305, 505, 705, 905, 1105, 1305, 1505, 1705, 1905, 2105	3BHK	76.86	827	11.72	126	5.16	56	93.74	1009
106, 306, 506, 706, 906, 1106, 1306, 1506, 1706, 1906, 2106	2BHK	52.21	562	11.69	126	3.18	34	67.08	722
107, 307, 507, 707, 907, 1107, 1307, 1507, 1707, 1907, 2107	2BHK	55.59	598	12.2	131	3.56	38	71.35	768
108, 308, 508, 708, 908, 1108, 1308, 1508, 1708, 1908, 2108	3BHK	82.70	890	12.48	134	5.75	62	100.93	1086

The dimensions mentioned in sq.m. are valid and dimensions mentioned in sq.ft. are for information only. Conversion table is; 1 sq.m. = 10.764 sq.ft. & 1 m. = 3.28 ft.



VTP LEONARA

C - BUILDING

EVEN FLOOR PLAN

Floor Nos. - 2, 4, 6, 8, 10, 12, 14, 16, 18, 20, 22



FLAT NO.	TYPE	BASIC CARPET		ENCL. BALCONY		TERRACE		TOTAL CARPET	
		SQ.M.	SQ.FT.	SQ.M.	SQ.FT.	SQ.M.	SQ.FT.	SQ.M.	SQ.FT.
201, 401, 601, 801, 1001, 1201, 1401, 1601, 1801, 2001, 2201	3BHK	82.70	890	12.48	134	5.75	62	100.93	1086
202, 402, 602, 802, 1002, 1202, 1402, 1602, 1802, 2002, 2202	2BHK	55.59	598	12.2	131	3.56	38	71.35	768
203, 403, 603, 803, 1003, 1203, 1403, 1603, 1803, 2003, 2203	2BHK	52.21	562	11.69	126	3.18	34	67.08	722
204, 404, 604, 804, 1004, 1204, 1404, 1604, 1804, 2004, 2204	3BHK	76.86	827	11.72	126	5.34	57	93.92	1011
205, 405, 605, 805, 1005, 1205, 1405, 1605, 1805, 2005, 2205	3BHK	76.86	827	11.72	126	5.34	57	93.92	1011
206, 406, 606, 806, 1006, 1206, 1406, 1606, 1806, 2006, 2206	2BHK	52.21	562	11.69	126	3.18	34	67.08	722
207, 407, 607, 807, 1007, 1207, 1407, 1607, 1807, 2007, 2207	2BHK	55.59	598	12.2	131	3.56	38	71.35	768
208, 408, 608, 808, 1008, 1208, 1408, 1608, 1808, 2008, 2208	3BHK	82.70	890	12.48	134	5.75	62	100.93	1086

The dimensions mentioned in sq.m. are valid and dimensions mentioned in sq.ft. are for information only. Conversion table is; 1 sq.m. = 10.764 sq.ft. & 1 m. = 3.28 ft.



VTP LEONARA

D - BUILDING

ODD FLOOR PLAN

Floor Nos. - 1, 3, 5, 7, 9, 11, 13, 15, 17, 19, 21

Flat no.	Carpet area		Enclosed Balcony		TERRACE AREA		TOTAL CARPET AREA		
	in sq.m.	in q.Ht.	In SQ.M.	IN SQ.FT.	IN SQ.M.	IN SQ.FT.	IN SQ.M.	IN SQ.FT.	
101,301,501,701,901,1101,1301,1501,1701,1901,2101									
102,302,502,702,902,1102,1302,1502,1702,1902,2102									
107,307,507,707,907,1107,1307,1507,1707,1907,2107									
108,308,508,708,908,1108,1308,1508,1708,1908,2108	2BHK	49.86	536.69	10.51	113.13	3.17	34.12	63.54	683.91
103,303,503,703,903,1103,1303,1503,1703,1903,2103									
106,306,506,706,906,1106,1306,1506,1706,1906,2106	7BHK	55.59	598.37	8.65	93.11	3.43	36.97	67.67	778.40
104,304,504,704,904,1104,1304,1504,1704,1904,2104									
105,305,505,704,905,1105,1305,1505,1705,1905,2105	3BHK	77.92	838.73	10.32	111.08	5.14	55.33	93.38	1005.14



The dimensions mentioned in sq.m. are valid and dimensions mentioned in sq. ft. are for information only. Conversion table is; 1 sq.m. = 10.764 sq.ft. & 1 m. = 3.28 ft.



VTP LEONARA

D - BUILDING

EVEN FLOOR PLAN

Floor Nos. - 2, 4, 6, 8, 10, 12, 14, 16, 18, 20, 22



Flat no.	Carpet area		Enclosed Balcony		TERRACE AREA		TOTAL CARPET AREA		
	in sq.m.	in q.Ht.	In SQ.M.	IN SQ.FT.	IN SQ.M.	IN SQ.FT.	IN SQ.M.	IN SQ.FT.	
201,401,601,801,1001,1201,1401,1601,1801,2001,2201									
202,402,602,802,1002,1202,1402,1602,1802,2002,2202									
207,407,607,807,1007,1207,1407,1607,1807,2007,2207									
208,408,608,808,1008,1208,1408,1608,1808,2008,2208	2BHK	49.86	536.69	10.51	113.13	3.17	34.12	63.54	683.94
203,403,603,803,1003,1203,1403,1603,1803,2003,2203									
206,406,606,806,1006,1206,1406,1606,1806,2006,2206	2BHK	55.59	598.37	8.65	93.11	3.43	36.92	67.67	728.40
204,404,604,804,1004,1204,1404,1604,1804,2004,2204									
205,405,605,804,1005,1205,1405,1605,1805,2005,2205	3BHK	77.92	838.73	10.32	111.08	5.14	55.33	93.38	1005.14



VTP LEONARA

E - BUILDING

ODD FLOOR PLAN

Floor Nos. - 1, 3, 5, 7, 9, 11, 13, 15, 17, 19, 21



FLAT NO.	TYPE	BASIC CARPET		ENCL. BALCONY		TERRACE		TOTAL CARPET	
		SQ.M.	SQ.FT.	SQ.M.	SQ.FT.	SQ.M.	SQ.FT.	SQ.M.	SQ.FT.
101, 301, 501, 701, 901, 1101, 1301, 1501, 1701, 1901, 2101	2BHK	58.51	630	10.83	117	4.88	53	74.22	799
102, 302, 502, 702, 902, 1102, 1302, 1502, 1702, 1902, 2102	2BHK	61.51	662	7.93	85	4.88	53	74.32	800
103, 303, 503, 703, 903, 1103, 1303, 1503, 1703, 1903, 2103	2BHK	61.51	662	7.93	85	4.88	53	74.32	800
104, 304, 504, 704, 904, 1104, 1304, 1504, 1704, 1904, 2104	2BHK	58.51	630	10.93	118	4.88	53	74.32	800
105, 305, 505, 705, 905, 1105, 1305, 1505, 1705, 1905, 2105	2BHK	58.51	630	10.93	118	4.88	53	74.32	800
106, 306, 506, 706, 906, 1106, 1306, 1506, 1706, 1906, 2106	2BHK	61.51	662	7.93	85	4.88	53	74.32	800
107, 307, 507, 707, 907, 1107, 1307, 1507, 1707, 1907, 2107	2BHK	61.51	662	7.93	85	4.88	53	74.32	800
108, 308, 508, 708, 908, 1108, 1308, 1508, 1708, 1908, 2108	2BHK	58.51	630	10.83	117	4.88	53	74.22	799

The dimensions mentioned in sq.m. are valid and dimensions mentioned in sq.ft. are for information only. Conversion table is; 1 sq.m. = 10.764 sq.ft. & 1 m. = 3.28 ft.



VTP LEONARA

E - BUILDING

EVEN FLOOR PLAN

Floor Nos. - 2, 4, 6, 8, 10, 12, 14, 16, 18, 20, 22



FLAT NO.	TYPE	BASIC CARPET		ENCL. BALCONY		TERRACE		TOTAL CARPET	
		SQ.M.	SQ.FT.	SQ.M.	SQ.FT.	SQ.M.	SQ.FT.	SQ.M.	SQ.FT.
201, 401, 601, 801, 1001, 1201, 1401, 1601, 1801, 2001, 2201	2BHK	58.16	626	10.85	117	5.76	62	74.77	805
202, 402, 602, 802, 1002, 1202, 1402, 1602, 1802, 2002, 2202	2BHK	61.18	659	7.93	85	5.76	62	74.87	806
203, 403, 603, 803, 1003, 1203, 1403, 1603, 1803, 2003, 2203	2BHK	61.18	659	7.93	85	5.76	62	74.87	806
204, 404, 604, 804, 1004, 1204, 1404, 1604, 1804, 2004, 2204	2BHK	58.16	626	10.93	118	5.76	62	74.85	806
205, 405, 605, 805, 1005, 1205, 1405, 1605, 1805, 2005, 2205	2BHK	58.16	626	10.93	118	5.76	62	74.85	806
206, 406, 606, 806, 1006, 1206, 1406, 1606, 1806, 2006, 2206	2BHK	61.18	659	7.93	85	5.76	62	74.87	806
207, 407, 607, 807, 1007, 1207, 1407, 1607, 1807, 2007, 2207	2BHK	61.18	659	7.93	85	5.76	62	74.87	806
208, 408, 608, 808, 1008, 1208, 1408, 1608, 1808, 2008, 2208	2BHK	58.16	626	10.85	117	5.76	62	74.77	805

The dimensions mentioned in sq.m. are valid and dimensions mentioned in sq.ft. are for information only. Conversion table is; 1 sq.m. = 10.764 sq.ft. & 1 m. = 3.28 ft.



VTP LEONARA

F - BUILDING

ODD FLOOR PLAN

Floor Nos. - 1, 3, 5, 7, 9, 11, 13, 15, 17, 19, 21

FLAT NO.	TYPE	BASIC CARPET		ENCL. BALCONY		TERRACE		TOTAL CARPET	
		SQ.M.	SQ.FT.	SQ.M.	SQ.FT.	SQ.M.	SQ.FT.	SQ.M.	SQ.FT.
101, 301, 501, 701, 901, 1101, 1301, 1501, 1701, 1901, 2101	1BHK	32.07	345	7.48	81	2.51	27	42.06	453
102, 302, 502, 702, 902, 1102, 1302, 1502, 1702, 1902, 2102	1BHK	33.45	360	6.03	65	2.51	27	41.99	452
103, 303, 503, 703, 903, 1103, 1303, 1503, 1703, 1903, 2103	1BHK	33.45	360	6.03	65	2.51	27	41.99	452
104, 304, 504, 704, 904, 1104, 1304, 1504, 1704, 1904, 2104	1BHK	32.07	345	7.48	81	2.51	27	42.06	453
105, 305, 505, 705, 905, 1105, 1305, 1505, 1705, 1905, 2105	1BHK	32.07	345	7.48	81	2.51	27	42.06	453
106, 306, 506, 706, 906, 1106, 1306, 1506, 1706, 1906, 2106	1BHK	32.07	345	7.48	81	2.51	27	42.06	453
107, 307, 507, 707, 907, 1107, 1307, 1507, 1707, 1907, 2107	1BHK	32.07	345	7.48	81	2.51	27	42.06	453
108, 308, 508, 708, 908, 1108, 1308, 1508, 1708, 1908, 2108	1BHK	33.45	360	6.03	65	2.51	27	41.99	452
109, 309, 509, 709, 909, 1109, 1309, 1509, 1709, 1909, 2109	1BHK	33.45	360	6.03	65	2.51	27	41.99	452
110, 310, 510, 710, 910, 1110, 1310, 1510, 1710, 1910, 2110	1BHK	32.07	345	7.48	81	2.51	27	42.06	453

The dimensions mentioned in sq.m. are valid and dimensions mentioned in sq.ft. are for information only. Conversion table is; 1 sq.m. = 10.764 sq.ft. & 1 m. = 3.28 ft.





VTP LEONARA

F - BUILDING

EVEN FLOOR PLAN

Floor Nos. - 2, 4, 6, 8, 10, 12, 14, 16, 18, 20, 22

FLAT NO.	TYPE	BASIC CARPET		ENCL. BALCONY		TERRACE		TOTAL CARPET	
		SQ.M.	SQ.FT.	SQ.M.	SQ.FT.	SQ.M.	SQ.FT.	SQ.M.	SQ.FT.
201, 401, 601, 801, 1001, 1201, 1401, 1601, 1801, 2001, 2201	1BHK	32.07	345	7.48	81	2.51	27	42.06	453
202, 402, 602, 802, 1002, 1202, 1402, 1602, 1802, 2002, 2202	1BHK	33.45	360	6.03	65	2.51	27	41.99	452
203, 403, 603, 803, 1003, 1203, 1403, 1603, 1803, 2003, 2203	1BHK	33.45	360	6.03	65	2.51	27	41.99	452
204, 404, 604, 804, 1004, 1204, 1404, 1604, 1804, 2004, 2204	1BHK	32.07	345	7.48	81	2.51	27	42.06	453
205, 405, 605, 805, 1005, 1205, 1405, 1605, 1805, 2005, 2205	1BHK	32.07	345	7.48	81	2.51	27	42.06	453
206, 406, 606, 806, 1006, 1206, 1406, 1606, 1806, 2006, 2206	1BHK	32.07	345	7.48	81	2.51	27	42.06	453
207, 407, 607, 807, 1007, 1207, 1407, 1607, 1807, 2007, 2207	1BHK	32.07	345	7.48	81	2.51	27	42.06	453
208, 408, 608, 808, 1008, 1208, 1408, 1608, 1808, 2008, 2208	1BHK	33.45	360	6.03	65	2.51	27	41.99	452
209, 409, 609, 809, 1009, 1209, 1409, 1609, 1809, 2009, 2209	1BHK	33.45	360	6.03	65	2.51	27	41.99	452
210, 410, 610, 810, 1010, 1210, 1410, 1610, 1810, 2010, 2210	1BHK	32.07	345	7.48	81	2.51	27	42.06	453

The dimensions mentioned in sq.m. are valid and dimensions mentioned in sq.ft. are for information only. Conversion table is; 1 sq.m. = 10.764 sq.ft. & 1 m. = 3.28 ft.





VTP LEONARA

H - BUILDING

ODD FLOOR PLAN

Floor Nos. - 1, 3, 5, 7, 9, 11, 13, 15, 17, 19, 21

FLAT NO.	TYPE	BASIC CARPET		ENCL. BALCONY		TERRACE		TOTAL CARPET	
		SQ.M.	SQ.FT.	SQ.M.	SQ.FT.	SQ.M.	SQ.FT.	SQ.M.	SQ.FT.
101, 301, 501, 701, 901, 1101, 1301, 1501, 1701, 1901, 2101	1BHK	31.15	335	9.3	100	3.11	33	43.56	469
102, 302, 502, 702, 902, 1102, 1302, 1502, 1702, 1902, 2102	1BHK	30.84	332	6.2	67	3.11	33	40.15	432
103, 303, 503, 703, 903, 1103, 1303, 1503, 1703, 1903, 2103	1BHK	30.84	332	6.2	67	3.11	33	40.15	432
104, 304, 504, 704, 904, 1104, 1304, 1504, 1704, 1904, 2104	1BHK	30.84	332	6.2	67	3.11	33	40.15	432
105, 305, 505, 705, 905, 1105, 1305, 1505, 1705, 1905, 2105	1BHK	30.84	332	6.2	67	3.11	33	40.15	432
106, 306, 506, 706, 906, 1106, 1306, 1506, 1706, 1906, 2106	1BHK	31.15	335	9.3	100	3.11	33	43.56	469
107, 307, 507, 707, 907, 1107, 1307, 1507, 1707, 1907, 2107	1BHK	34.04	366	6.15	66	3.11	33	43.3	466
108, 308, 508, 708, 908, 1108, 1308, 1508, 1708, 1908, 2108	1BHK	33.73	363	3.05	33	3.11	33	39.89	429
109, 309, 509, 709, 909, 1109, 1309, 1509, 1709, 1909, 2109	1BHK	33.73	363	3.05	33	3.11	33	39.89	429
110, 310, 510, 710, 910, 1110, 1310, 1510, 1710, 1910, 2110	1BHK	33.73	363	3.05	33	3.11	33	39.89	429
111, 311, 511, 711, 911, 1111, 1311, 1511, 1711, 1911, 2111	1BHK	33.73	363	3.05	33	3.11	33	39.89	429
112, 312, 512, 712, 912, 1112, 1312, 1512, 1712, 1912, 2112	1BHK	34.04	366	6.15	66	3.11	33	43.3	466

The dimensions mentioned in sq.m. are valid and dimensions mentioned in sq.ft. are for information only. Conversion table is; 1 sq.m. = 10.764 sq.ft. & 1 m. = 3.28 ft.





FLAT NO.	TYPE	BASIC CARPET		ENCL. BALCONY		TERRACE		TOTAL CARPET	
		SQ.M.	SQ.FT.	SQ.M.	SQ.FT.	SQ.M.	SQ.FT.	SQ.M.	SQ.FT.
201, 401, 601, 801, 1001, 1201, 1401, 1601, 1801, 2001, 2201	1BHK	32.36	348	7.89	85	4.96	53	45.21	487
202, 402, 602, 802, 1002, 1202, 1402, 1602, 1802, 2002, 2202	1BHK	32.04	345	4.79	52	4.96	53	41.79	450
203, 403, 603, 803, 1003, 1203, 1403, 1603, 1803, 2003, 2203	1BHK	32.04	345	4.79	52	4.96	53	41.79	450
204, 404, 604, 804, 1004, 1204, 1404, 1604, 1804, 2004, 2204	1BHK	32.04	345	4.79	52	4.96	53	41.79	450
205, 405, 605, 805, 1005, 1205, 1405, 1605, 1805, 2005, 2205	1BHK	32.04	345	4.79	52	4.96	53	41.79	450
206, 406, 606, 806, 1006, 1206, 1406, 1606, 1806, 2006, 2206	1BHK	32.36	348	7.89	85	4.96	53	45.21	487
207, 407, 607, 807, 1007, 1207, 1407, 1607, 1807, 2007, 2207	1BHK	32.36	348	7.89	85	4.96	53	45.21	487
208, 408, 608, 808, 1008, 1208, 1408, 1608, 1808, 2008, 2208	1BHK	32.04	345	4.79	52	4.96	53	41.79	450
209, 409, 609, 809, 1009, 1209, 1409, 1609, 1809, 2009, 2209	1BHK	32.04	345	4.79	52	4.96	53	41.79	450
210, 410, 610, 810, 1010, 1210, 1410, 1610, 1810, 2010, 2210	1BHK	32.04	345	4.79	52	4.96	53	41.79	450
211, 411, 611, 811, 1011, 1211, 1411, 1611, 1811, 2011, 2211	1BHK	32.04	345	4.79	52	4.96	53	41.79	450
212, 412, 612, 812, 1012, 1212, 1412, 1612, 1812, 2012, 2212	1BHK	32.36	348	7.89	85	4.96	53	45.21	487

VTP LEONARA

H - BUILDING

EVEN FLOOR PLAN

Floor Nos. - 2, 4, 6, 8, 10, 12, 14, 16, 18, 20, 22



The dimensions mentioned in sq.m. are valid and dimensions mentioned in sq.ft. are for information only. Conversion table is; 1 sq.m. = 10.764 sq.ft. & 1 m. = 3.28 ft.



**CELEBRATE
VTP BEL AIR –
THE FLOW
OF LIFE**

AMENITIES

- Club house
- Multipurpose hall
- Gymnasium
- Indoor games room
- Two Swimming pools (One infinity pool another leisure pool)
- Party lawn
- Outdoor fitness area
- Cricket Net
- Lawn Tennis
- Children's play area
- Central podium
- Activity lawn with stage
- Skating rink
- Senior citizen plaza
- Multipurpose court
- Acupressure path way
- Separate eat out area

SPECIFICATIONS

Flooring

- Living, Dining, Kitchen - Glazed vitrified Tiles (800x800mm)
- All Bedrooms - Glazed vitrified Tiles (600x600mm)
- Dry Balcony & Terraces- Anti-skid ceramic Tiles

Toilets

- CP fittings – Jaquar/ Cera equivalent
- Flooring – Anti-skid tiles
- Designer Decorative dado Tiles up-to 7 feet
- Solar connection in master toilet
- Geysers point in other toilet

Kitchen

- Granite Kitchen platform
- S.S. Sink
- Ceramic/glazed tiles above kitchen platform 2ft
- Provision for water purifier

Doors & Windows

- Main door – Decorative entrance door with Veneer
- Internal doors – Laminated Flush door
- Laminated flush doors in Wash Rooms
- Toilet door frames in granite
- Powder coated aluminum sliding windows with mosquito net
- S.S. glass railing to terrace

Electrical fittings

- Switches – Anchor/ legrand equivalent modular switches.
- Concealed copper wiring with M.C.B
- Adequate electric points with TV & Telephone points in living room, Master bed room
- AC points in all bedrooms
- 100% DG Back-up for lifts & Common area
- Provision for inverter

Plumbing

- Concealed anti-corrosive plumbing

Wall Finishes

- Plastic emulsion paint for internal wall
- Exterior – Superior quality Texture/apex/ protective paint

Automation

- Intercom Facility
- Video Door Phone

Structure

- Earthquake resistant RCC structure

VTP BEL AIR LAYOUT PLAN

VTP BELAIR



*Artistic impression



FLAT NO	TYPE	Carpet Area		Enclosed Balcony		Terrace Area		Total Carpet area	
		in sq.m.	in sq.ft.	in sq.m.	in sq.ft.	in sq.m.	in sq.ft.	in sq.m.	in sq.ft.
101,301,501,701,901,1101,1301,1501,1701,1901,2101,2301	2BHK	47.02	506.12	9.23	99.35	3.14	33.80	59.39	639.27
102,302,502,702,902,1102,1302,1502,1702,1902,2102,2302	2BHK	47.02	506.12	9.23	99.35	3.14	33.80	59.39	639.27
103,303,503,703,903,1103,1303,1503,1703,1903,2103,2303	2BHK	47.02	506.12	9.23	99.35	3.14	33.80	59.39	639.27
104,304,504,704,904,1104,1304,1504,1704,1904,2104,2304	2BHK	47.02	506.12	9.23	99.35	3.14	33.80	59.39	639.27
105,305,505,705,905,1105,1305,1505,1705,1905,2105,2305	2BHK	47.02	506.12	9.23	99.35	3.14	33.80	59.39	639.27
106,306,506,706,906,1106,1306,1506,1706,1906,2106,2306	2BHK	47.02	506.12	9.23	99.35	3.14	33.80	59.39	639.27
107,307,507,707,907,1107,1307,1507,1707,1907,2107,2307	2BHK	47.02	506.12	9.23	99.35	3.14	33.80	59.39	639.27
108,308,508,708,908,1108,1308,1508,1708,1908,2108,2308	2BHK	47.02	506.12	9.23	99.35	3.14	33.80	59.39	639.27

VTP BEL AIR

A - BUILDING ODD FLOOR PLAN Floor Nos. - 1, 3, 5, 7, 9, 11, 13, 15, 17, 19, 21, 23



The dimensions mentioned in sq.m. are valid and dimensions mentioned in sq. ft. are for information only. Conversion table is; 1 sq.m. = 10.764 sq.ft. & 1 m. = 3.28 ft.



FLAT NO	TYPE	Carpet Area		Enclosed Balcony		Terrace Area		Total Carpet area	
		in sq.m.	in sq.ft.	in sq.m.	in sq.ft.	in sq.m.	in sq.ft.	in sq.m.	in sq.ft.
201,401,601,801,1001,1201,1401,1601,1801,2001,2201	2BHK	47.02	506.12	9.23	99.35	3.14	33.80	59.39	639.27
202,402,602,802,1002,1202,1402,1602,1802,2002,2202	2BHK	47.02	506.12	9.23	99.35	3.14	33.80	59.39	639.27
203,403,603,803,1003,1203,1403,1603,1803,2003,2203	2BHK	47.02	506.12	9.23	99.35	3.14	33.80	59.39	639.27
204,404,604,804,1004,1204,1404,1604,1804,2004,2204	2BHK	47.02	506.12	9.23	99.35	3.14	33.80	59.39	639.27
205,405,605,805,1005,1205,1405,1605,1805,2005,2205	2BHK	47.02	506.12	9.23	99.35	3.14	33.80	59.39	639.27
206,406,606,806,1006,1206,1406,1606,1806,2006,2206	2BHK	47.02	506.12	9.23	99.35	3.14	33.80	59.39	639.27
207,407,607,807,1007,1207,1407,1607,1807,2007,2207	2BHK	47.02	506.12	9.23	99.35	3.14	33.80	59.39	639.27
208,408,608,808,1008,1208,1408,1608,1808,2008,2208	2BHK	47.02	506.12	9.23	99.35	3.14	33.80	59.39	639.27



VTP BEL AIR

B - BUILDING

ODD FLOOR PLAN

Floor Nos. - 1, 3, 5, 7, 9, 11, 13, 15, 17, 19, 21, 23

FLAT NO.	TYPE	BASIC CARPET		ENCL. BALCONY		TERRACE		TOTAL CARPET	
		SO.M.	SO.FT.	SO.M.	SO.FT.	SO.M.	SO.FT.	SO.M.	SO.FT.
101, 301, 501, 701, 901, 1101, 1301, 1501, 1701, 1901, 2101, 2301	2BHK	47.06	507	9.2	99	3.14	34	59.4	639
102, 302, 502, 702, 902, 1102, 1302, 1502, 1702, 1902, 2102, 2301	2BHK	47.06	507	9.2	99	3.14	34	59.4	639
103, 303, 503, 703, 903, 1103, 1303, 1503, 1703, 1903, 2103, 2301	2BHK	47.06	507	9.2	99	3.14	34	59.4	639
104, 304, 504, 704, 904, 1104, 1304, 1504, 1704, 1904, 2104, 2301	2BHK	47.06	507	9.2	99	3.14	34	59.4	639
105, 305, 505, 705, 905, 1105, 1305, 1505, 1705, 1905, 2105, 2301	2BHK	47.06	507	9.2	99	3.14	34	59.4	639
106, 306, 506, 706, 906, 1106, 1306, 1506, 1706, 1906, 2106, 2301	2BHK	47.06	507	9.2	99	3.14	34	59.4	639
107, 307, 507, 707, 907, 1107, 1307, 1507, 1707, 1907, 2107, 2301	2BHK	47.06	507	9.2	99	3.14	34	59.4	639
108, 308, 508, 708, 908, 1108, 1308, 1508, 1708, 1908, 2108, 2301	2BHK	47.06	507	9.2	99	3.14	34	59.4	639

The dimensions mentioned in sq.m. are valid and dimensions mentioned in sq.ft. are for information only. Conversion table is; 1 sq.m. = 10.764 sq.ft. & 1 m. = 3.28 ft.





VTP BEL AIR

B - BUILDING

EVEN FLOOR PLAN

Floor Nos. - 2, 4, 6, 8, 10, 12, 14, 16, 18, 20, 22



FLAT NO.	TYPE	BASIC CARPET		ENCL. BALCONY		TERRACE		TOTAL CARPET	
		SQ.M.	SQ.FT.	SQ.M.	SQ.FT.	SQ.M.	SQ.FT.	SQ.M.	SQ.FT.
201, 401, 601, 801, 1001, 1201, 1401, 1601, 1801, 2001, 2201	2BHK	47.06	507	9.2	99	3.14	34	59.4	639
202, 402, 602, 802, 1002, 1202, 1402, 1602, 1802, 2002, 2202	2BHK	47.06	507	9.2	99	3.14	34	59.4	639
203, 403, 603, 803, 1003, 1203, 1403, 1603, 1803, 2003, 2203	2BHK	47.06	507	9.2	99	3.14	34	59.4	639
204, 404, 604, 804, 1004, 1204, 1404, 1604, 1804, 2004, 2204	2BHK	47.06	507	9.2	99	3.14	34	59.4	639
205, 405, 605, 805, 1005, 1205, 1405, 1605, 1805, 2005, 2205	2BHK	47.06	507	9.2	99	3.14	34	59.4	639
206, 406, 606, 806, 1006, 1206, 1406, 1606, 1806, 2006, 2206	2BHK	47.06	507	9.2	99	3.14	34	59.4	639
207, 407, 607, 807, 1007, 1207, 1407, 1607, 1807, 2007, 2207	2BHK	47.06	507	9.2	99	3.14	34	59.4	639
208, 408, 608, 808, 1008, 1208, 1408, 1608, 1808, 2008, 2208	2BHK	47.06	507	9.2	99	3.14	34	59.4	639

The dimensions mentioned in sq.m. are valid and dimensions mentioned in sq.ft. are for information only. Conversion table is; 1 sq.m. = 10.764 sq.ft. & 1 m. = 3.28 ft.

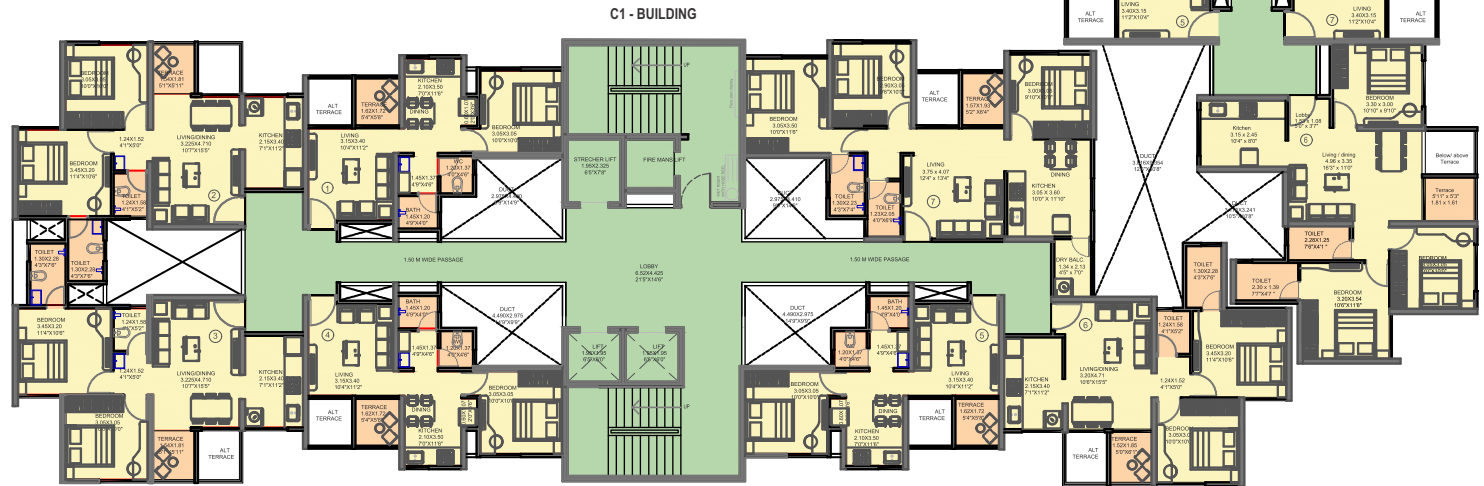
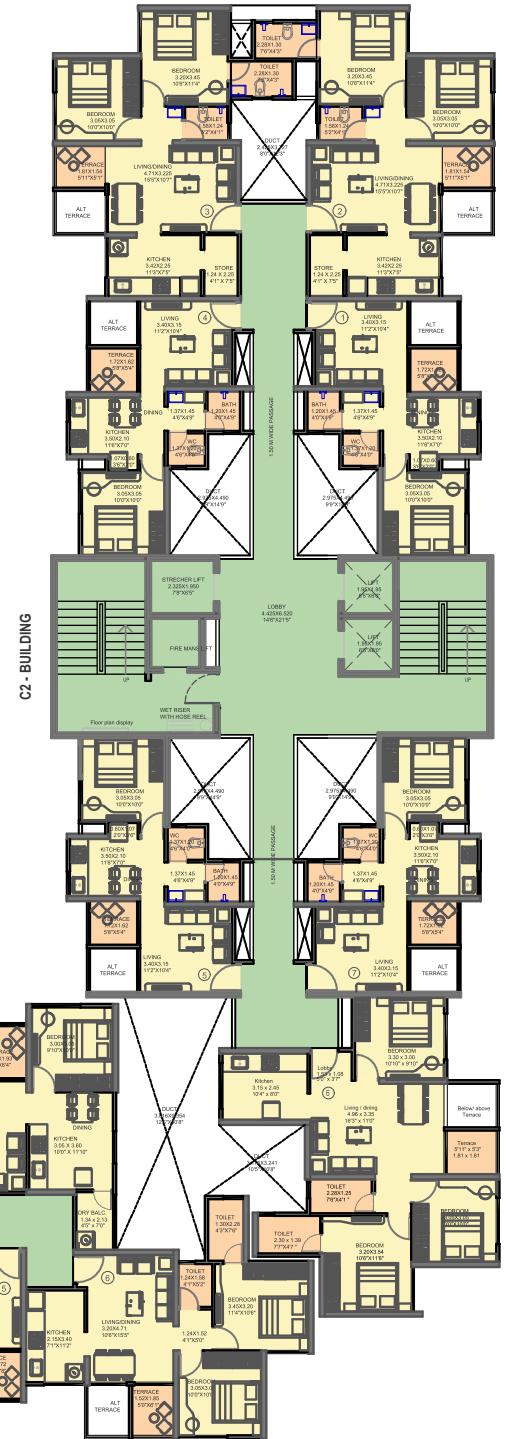
VTP BEL AIR

C1 & C2 - BUILDING

ODD FLOOR PLAN

Floor Nos. - 1, 3, 5, 7, 9, 11, 13, 15, 17, 19, 21, 23

FLAT NO.	TYPE	CARPET AREA		ENCLOSED BALCONY		TERRACE AREA		TOTAL CARPET AREA	
		IN SQ.M.	IN SQ.FT.	IN SQ.M.	IN SQ.FT.	IN SQ.M.	IN SQ.FT.	IN SQ.M.	IN SQ.FT.
C1-101,301,501,701,901,1101,1301,1501,1701,1901,2101,2301	1BHK	29.15	314	7.38	79	2.78	30	39.31	423
C1-102,302,502,702,902,1102,1302,1502,1702,1902,2102,2301	2BHK	45.07	485	7.85	84	2.78	30	55.70	600
C1-103,303,503,703,903,1103,1303,1503,1703,1903,2103,2301	2BHK	45.07	485	7.85	84	2.78	30	55.70	600
C1-104,304,504,704,904,1104,1304,1504,1704,1904,2104,2301	1BHK	29.15	314	7.38	79	2.78	30	39.31	423
C1-105,305,505,705,905,1105,1305,1505,1705,1905,2105,2301	1BHK	29.15	314	7.38	79	2.78	30	39.31	423
C1-106,306,506,706,906,1106,1306,1506,1706,1906,2106,2301	2BHK	48.52	522	4.42	48	2.78	30	55.72	600
C1-307,507,707,907,1107,1307,1707	Smart 3BHK	57.45	618	13.16	142	3.02	33	73.63	793
C2-101,301,501,701,901,1101,1301,1501,1701,1901,2101,2301	1BHK	29.15	314	7.38	79	2.78	30	39.31	423
C2-102,302,502,702,902,1102,1302,1502,1702,1902,2102,2301	2BHK	49.15	529	6.89	74	2.78	30	58.82	633
C2-103,303,503,703,903,1103,1303,1503,1703,1903,2103,2301	2BHK	49.15	529	6.89	74	2.78	30	58.82	633
C2-104,304,504,704,904,1104,1304,1504,1704,1904,2104,2301	1BHK	29.15	314	7.38	79	2.78	30	39.31	423
C2-105,305,505,705,905,1105,1305,1505,1705,1905,2105,2301	1BHK	29.15	314	7.38	79	2.78	30	39.31	423
C2-106,306,506,706,906,1106,1306,1506,1706,1906,2106,2301	Smart 3BHK	59.32	639	8.73	94	2.92	31	70.97	764
C2-107,307,507,707,907,1107,1307,1507,1707,1907,2107,2301	1BHK	29.15	314	7.38	79	2.78	30	39.31	423



The dimensions mentioned in sq.m. are valid and dimensions mentioned in sq. ft. are for information only. Conversion table is; 1 sq.m. = 10.764 sq.ft. & 1 m. = 3.28 ft.

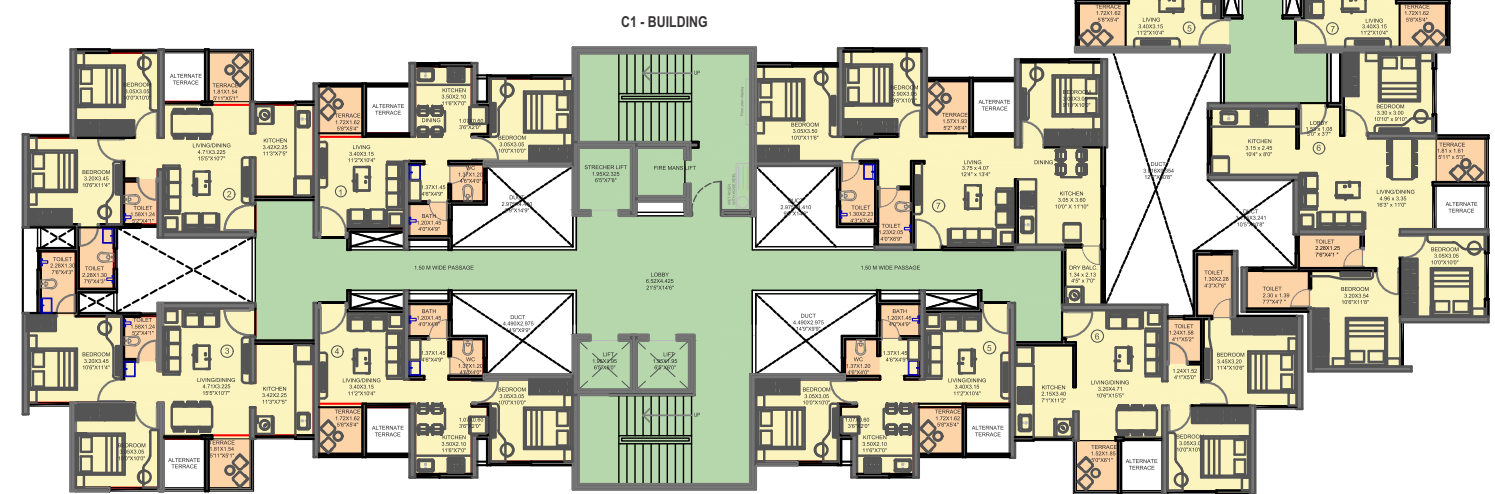
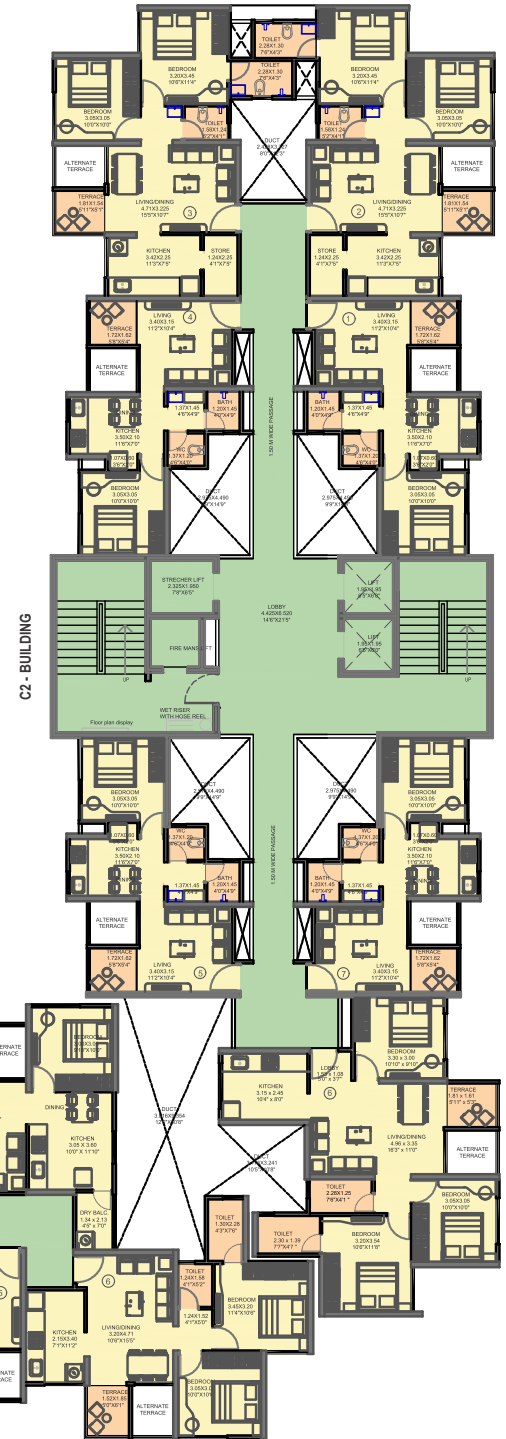
VTP BEL AIR

C1 & C2 - BUILDING

EVEN FLOOR PLAN

Floor Nos. - 2, 4, 6, 8, 10, 12, 14, 16, 18, 20, 22

FLAT NO.	TYPE	CARPET AREA		ENCLOSED BALCONY		TERRACE AREA		TOTAL CARPET AREA	
		IN SQ.M.	IN SQ.FT.	IN SQ.M.	IN SQ.FT.	IN SQ.M.	IN SQ.FT.	IN SQ.M.	IN SQ.FT.
C1-201,401,601,801,901,1001,1201,1401,1601,1801,2001,2201	1BHK	29.15	314	7.38	79	2.78	30	39.31	423
C1-202,402,602,802,902,1002,1202,1402,1602,1802,2002,2202	2BHK	45.07	485	7.85	84	2.78	30	55.70	600
C1-203,403,603,803,903,1003,1203,1403,1603,1803,2003,2203	2BHK	45.07	485	7.85	84	2.78	30	55.70	600
C1-204,404,604,804,904,1004,1204,1404,1604,1804,2004,2204	1BHK	29.15	314	7.38	79	2.78	30	39.31	423
C1-205,405,605,805,905,1005,1205,1405,1605,1805,2005,2205	1BHK	29.15	314	7.38	79	2.78	30	39.31	423
C1-206,406,606,806,906,1006,1206,1406,1606,1806,2006,2206	2BHK	48.52	522	4.42	48	2.78	30	55.72	600
C1-407,607,907,1007,1207,1607,2007	Smart 3BHK	57.45	618	13.16	142	3.02	33	73.63	793
C2-201,401,601,801,901,1001,1201,1401,1601,1801,2001,2201	1BHK	29.15	314	7.38	79	2.78	30	39.31	423
C2-202,402,602,802,902,1002,1202,1402,1602,1802,2002,2202	2BHK	49.15	529	6.89	74	2.78	30	58.82	633
C2-203,403,603,803,903,1003,1203,1403,1603,1803,2003,2203	2BHK	49.15	529	6.89	74	2.78	30	58.82	633
C2-204,404,604,804,904,1004,1204,1404,1604,1804,2004,2204	1BHK	29.15	314	7.38	79	2.78	30	39.31	423
C2-205,405,605,805,905,1005,1205,1405,1605,1805,2005,2205	1BHK	29.15	314	7.38	79	2.78	30	39.31	423
C2-206,406,606,806,906,1006,1206,1406,1606,1806,2006,2206	Smart 3BHK	59.32	639	8.73	94	2.92	31	70.97	764
C2-207,407,607,807,907,1007,1207,1407,1607,1807,2007,2207	1BHK	29.15	314	7.38	79	2.78	30	39.31	423



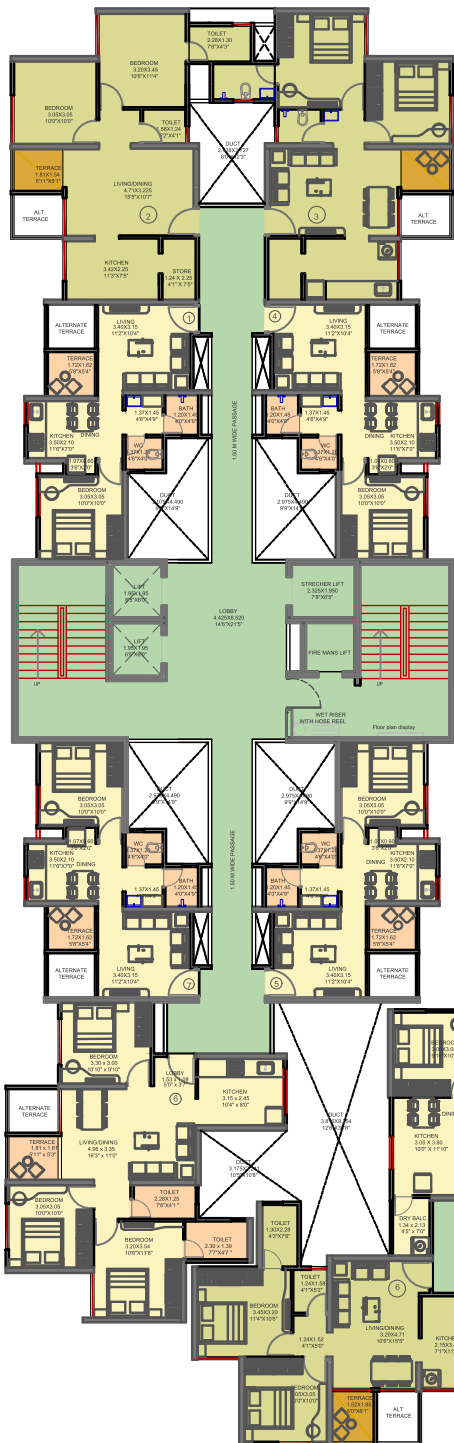
The dimensions mentioned in sq.m. are valid and dimensions mentioned in sq. ft. are for information only. Conversion table is; 1 sq.m. = 10.764 sq.ft. & 1 m. = 3.28 ft.

VTP BEL AIR

D1 & D2 - BUILDING

ODD FLOOR PLAN

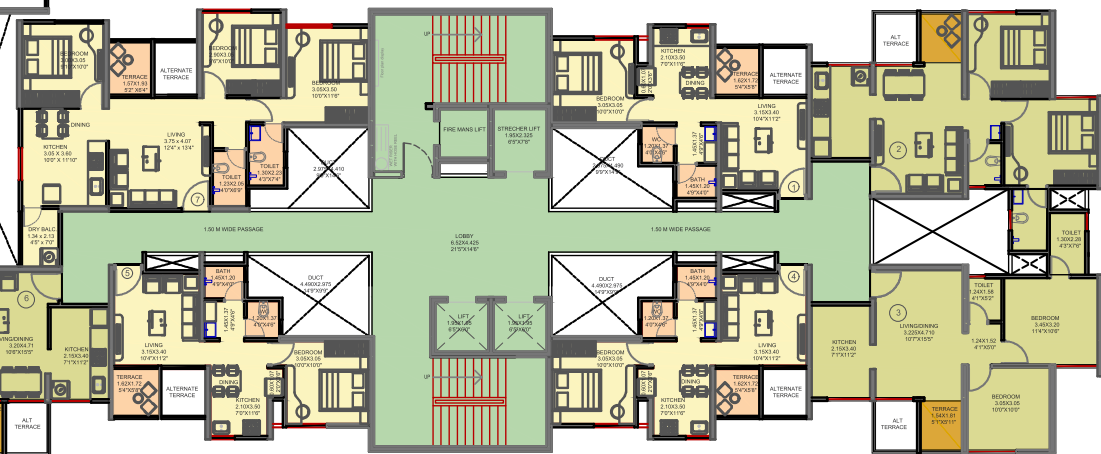
Floor Nos. - 1, 3, 5, 7, 9, 11, 13, 15, 17, 19, 21, 23



D2 - BUILDING

FLAT NO.	TYPE	CARPET AREA		ENCLOSED BALCONY		TERRACE AREA		TOTAL CARPET AREA	
		IN SQ.M.	IN SQ.FT.	IN SQ.M.	IN SQ.FT.	IN SQ.M.	IN SQ.FT.	IN SQ.M.	IN SQ.FT.
D1-1501,1901	1BHK	29.15	314	7.38	79	2.78	30	39.31	423
D1-102,302,502,702,902,1102,1302,1502,1702,1902,2102, 2301	2BHK	45.07	485	7.85	84	2.78	30	55.70	600
D1-103,303,503,703,903,1103,1303,1503,1703,1903,2103, 2301	2BHK	45.07	485	7.85	84	2.78	30	55.70	600
D1-106,306,506,706,906,1106,1306,1506,1706,1906,2106, 2301	2BHK	48.52	522	4.42	48	2.78	30	55.72	600
D1-107,307,907,1107,2107	Smart 3BHK	57.45	618	13.16	142	3.02	33	73.63	793
D2-101,501,701,901,1101,1501,1701	1BHK	29.15	314	7.38	79	2.78	30	39.31	423
D2-102,302,502,702,902,1102,1302,1502,1702,1902,2102, 2301	2BHK	49.15	529	6.89	74	2.78	30	58.82	633
D2-103,303,503,703,903,1103,1303,1503,1703,1903,2103, 2301	2BHK	49.15	529	6.89	74	2.78	30	58.82	633
D2-104,304,504,704,1504	1BHK	29.15	314	7.38	79	2.78	30	39.31	423
D2-1505	1BHK	29.15	314	7.38	79	2.78	30	39.31	423
D2-106,306,506,706,906,1106,1306,1506,1706,1906,2106, 2301	Smart 3BHK	59.32	639	8.73	94	2.92	31	70.97	764
D2-707	1BHK	29.15	314	7.38	79	2.78	30	39.31	423

D1 - BUILDING



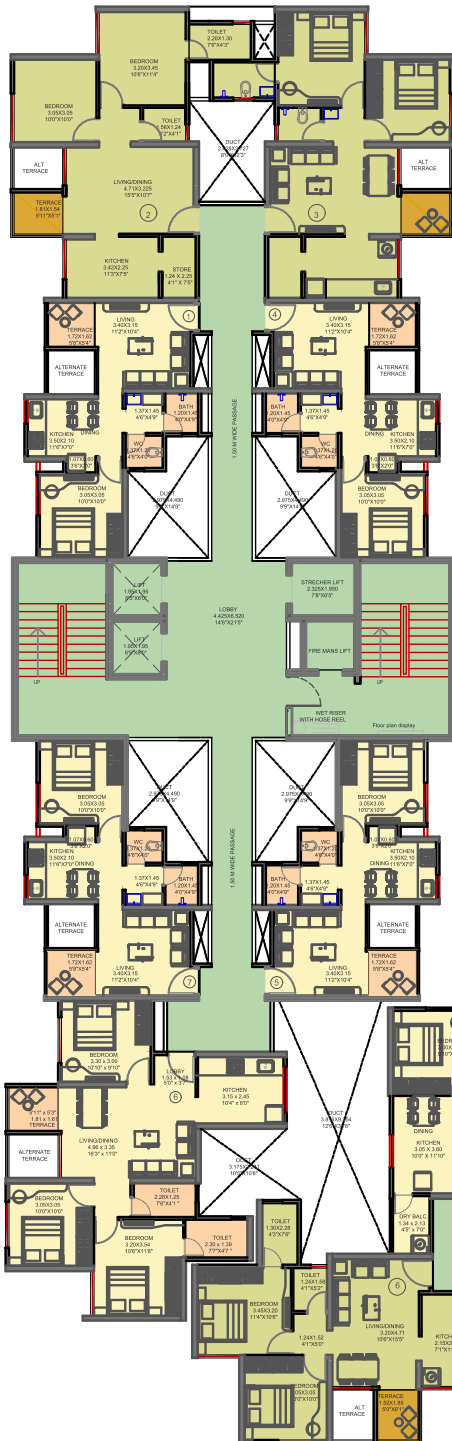
The dimensions mentioned in sq.m. are valid and dimensions mentioned in sq.ft. are for information only. Conversion table is; 1 sq.m. = 10.764 sq.ft. & 1 m. = 3.28 ft.

VTP BEL AIR

D1 & D2 - BUILDING

EVEN FLOOR PLAN

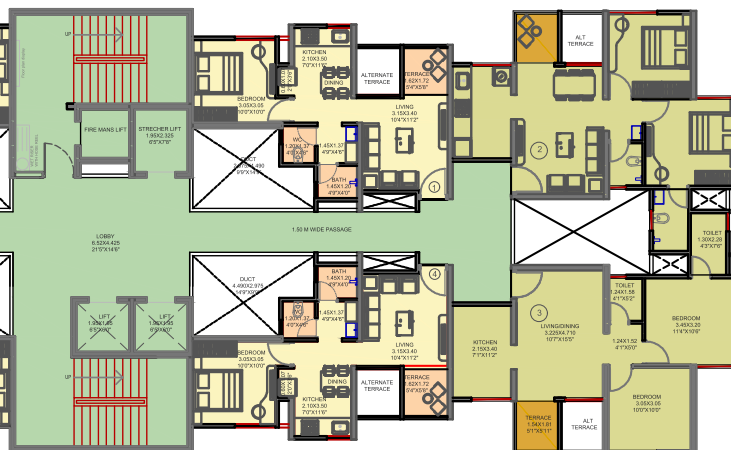
Floor Nos. - 2, 4, 6, 8, 10, 12, 14, 16, 18, 20, 22



D2 - BUILDING

FLAT NO.	TYPE	CARPET AREA		ENCLOSED BALCONY		TERRACE AREA		TOTAL CARPET AREA	
		IN SQ.M.	IN SQ.FT.	IN SQ.M.	IN SQ.FT.	IN SQ.M.	IN SQ.FT.	IN SQ.M.	IN SQ.FT.
D1-201	1BHK	29.15	314	7.38	79	2.78	30	39.31	423
D1-202,402,602,802,1002,1202,1402,1602,1802,2002,2202	2BHK	45.07	485	7.85	84	2.78	30	55.70	600
D1-203,403,603,803,1003,1203,1403,1603,1803,2003,2203	2BHK	45.07	485	7.85	84	2.78	30	55.70	600
D1-204	1BHK	29.15	314	7.38	79	2.78	30	39.31	423
D1-205,405,1605	1BHK	29.15	314	7.38	79	2.78	30	39.31	423
D1-206,406,606,806,1006,1206,1406,1606,1806,2006,2206	2BHK	48.52	522	4.42	48	2.78	30	55.72	600
D1-207,607,907,1207	Smart 3BHK	57.45	618	13.16	142	3.02	33	73.63	793
D2-401,601,1201,1601,1801	1BHK	29.15	314	7.38	79	2.78	30	39.31	423
D2-202,402,602,802,1002,1202,1402,1602,1802,2002,2202	2BHK	49.15	529	6.89	74	2.78	30	58.82	633
D2-203,403,603,803,1003,1203,1403,1603,1803,2003,2203	2BHK	49.15	529	6.89	74	2.78	30	58.82	633
D2-404,604	1BHK	29.15	314	7.38	79	2.78	30	39.31	423
D2-605,1005	1BHK	29.15	314	7.38	79	2.78	30	39.31	423
D2-206,406,606,806,1006,1206,1406,1606,1806,2006,2206	Smart 3BHK	59.32	639	8.73	94	2.92	31	70.97	764
D2-607	1BHK	29.15	314	7.38	79	2.78	30	39.31	423

D1 - BUILDING



The dimensions mentioned in sq.m. are valid and dimensions mentioned in sq.ft. are for information only. Conversion table is; 1 sq.m. = 10.764 sq.ft. & 1 m. = 3.28 ft.



UNIT NO.	TYPE	CARPET AREA		ENCLOSED BALCONY		TERRACE AREA		TOTAL CARPET AREA	
		IN SQ.M.	IN SQ.FT.	IN SQ.M.	IN SQ.FT.	IN SQ.M.	IN SQ.FT.	IN SQ.M.	IN SQ.FT.
101,301,501,701,901,1101,1301,1501,1701,1901,2101,2301	3BHK	71.42	768.76	11.09	119.37	6.82	73.41	89.33	961.55
102,302,502,702,902,1102,1302,1502,1702,1902,2102,2302									
103,303,503,703,903,1103,1303,1503,1703,1903,2103,2303	2BHK	50.02	538.42	10.83	116.57	3.03	32.61	63.88	687.60
104,304,504,704,904,1104,1304,1504,1704,1904,2104,2304									
2305									
106,306,506,706,906,1106,1306,1506,1706,1906,2106,2306									
2309	3BHK	70.90	763.17	10.98	118.19	4.05	43.59	85.93	924.95
107,307,507,707,907,1107,1307,1507,1707,1907,2107,2307									
108,308,508,708,908,1108,1308,1508,1708,1908,2108,2308									





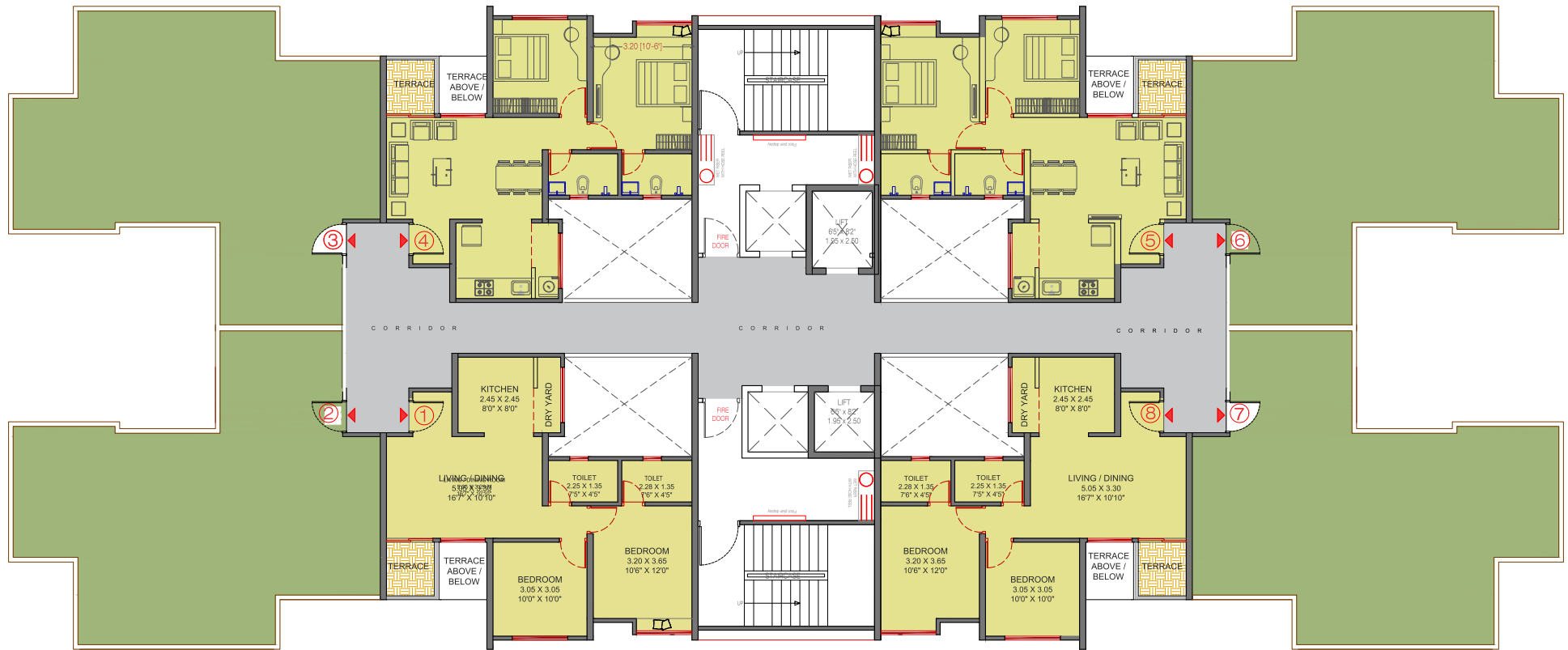
UNIT NO.	TYPE	CARPET AREA		ENCLOSED BALCONY		TERRACE AREA		TOTAL CARPET AREA	
		IN SQ.M.	IN SQ.FT.	IN SQ.M.	IN SQ.FT.	IN SQ.M.	IN SQ.FT.	IN SQ.M.	IN SQ.FT.
201,401,601,801,1001,1201,1401,1601,1801,2001,2201	3BHK	71.42	768.76	11.09	119.37	6.82	73.41	89.33	961.55
202,402,602,802,1002,1202,1402,1602,1802,2002,2202									
203,403,603,803,1003,1203,1403,1603,1803,2003,2203	2BHK	50.02	538.42	10.83	116.57	3.03	32.61	63.88	687.60
205,405,605,805,1005,1205,1405,1605,1805,2005,2205									
209,409,609,809,1009,1209,1409,1609,1809,2009,2209									
207,407,607,807,1007,1207,1407,1607,1807,2007,2207	3BHK	70.90	763.17	10.98	118.19	6.85	73.73	88.73	955.09
208,408,608,808,1008,1208,1408,1608,1808,2008,2208									





UNIT NO.	TYPE	CARPET AREA		ENCLOSED BALCONY		TERRACE AREA		TOTAL CARPET AREA	
		IN SQ.M.	IN SQ.FT.	IN SQ.M.	IN SQ.FT.	IN SQ.M.	IN SQ.FT.	IN SQ.M.	IN SQ.FT.
101,301,501,701,901,1101,1301,1501,1701,1901,2101,2301	2BHK	49.14	528.94	9.96	107.21	2.7	29.06	61.80	665.22
104,304,504,704,904,1104,1304,1504,1704,1904,2104,2304									
105,305,505,705,905,1105,1305,1505,1705,1905,2105,2305									
108,308,508,708,908,1108,1308,1508,1708,1908,2108,2308									





UNIT NO.	TYPE	CARPET AREA		ENCLOSED BALCONY		TERRACE AREA		TOTAL CARPET AREA	
		IN SQ.M.	IN SQ.FT.	IN SQ.M.	IN SQ.FT.	IN SQ.M.	IN SQ.FT.	IN SQ.M.	IN SQ.FT.
201,401,601,801,1001,1201,1401,1601,1801,2001,2201	2BHK	49.14	528.94	9.96	107.21	2.7	29.06	61.80	665.22
204,404,604,804,1004,1204,1404,1604,1804,2004,2204									
205,405,605,805,1005,1205,1405,1605,1805,2005,2205									
208,408,608,808,1008,1208,1408,1608,1808,2008,2208									





AMENITIES

- Multipurpose hall
- Billiards room
- Swimming pool
- Table Tennis
- Indoor Game (card room/ chess room)
- Gym
- Yoga hall

SPECIFICATIONS

Flooring

- Living, Dining, Kitchen and all bedrooms- Glazed vitrified Tiles (1200mm x 600mm)
- Dry Balcony & Terraces- Anti-skid ceramic Tiles

Toilets

- CP fittings – Jaquar/ Cera equivalent
- Flooring – Antiskid tiles
- Designer Decorative dado Tiles up-to 7 feet
- Solar connection in Master toilet & Geysers point in other toilet

Kitchen

- Granite Kitchen platform
- S.S. Sink
- Ceramic/glazed tiles above kitchen platform 2ft
- Provision for Water Purifier

Doors

- Main door – Decorative entrance door with Veneer
- Internal doors – Laminated Flush door
- Laminated flush doors in Wash Rooms

Windows

- Powder coated aluminum sliding windows with mosquito net.
- S.S. glass railing to terrace
- MS. GRILL

Electrical fittings

- Switches – Anchor/ Legrand equivalent modular switches.
- Concealed copper wiring with M.C.B
- Adequate electric points with TV & Telephone points in living room & master bed room
- AC points in all bedrooms

- 100% DG Back-up for lifts & Common area
- Provision of inverter

Plumbing

- Concealed anti-corrosive plumbing

Wall Finishes

- Plastic emulsion paint for internal wall
- Exterior – Superior quality Texture/apex/ protective paint

Automation

- Intercom Facility
- Video Door Phone

VTP ALPINE LAYOUT PLAN



*Artistic Impression



VTP ALPINE

Typical 2BHK Unit Plan



VTP ALPINE

Typical 3BHK Unit Plan



VTP ALPINE

FLOOR PLAN
Floor Nos. - 1, 3, 5



FLAT NO.	TYPE	BASIC CARPET		ENCL. BALCONY		UTILITY		DECK		TOTAL CARPET	
		SQ.M.	SQ.FT.	SQ.M.	SQ.FT.	SQ.M.	SQ.FT.	SQ.M.	SQ.FT.	SQ.M.	SQ.FT.
101, 301, 501	3BHK	86.64	933	15.3	165	3.57	38	9.24	99	114.75	1235
102, 302, 502	2BHK	58.13	626	9.28	100	3.51	38	4.52	49	75.44	812
103, 303, 503	2BHK	58.35	628	9.28	100	3.51	38	4.52	49	75.66	814
104, 304, 504	2BHK	58.14	626	9.28	100	3.51	38	4.52	49	75.45	812
105, 305, 505	3BHK	86.64	933	15.3	165	3.57	38	9.24	99	114.75	1235
106, 306, 506	3BHK	84.42	909	15.23	164	3.57	38	9.24	99	112.46	1211
107, 307, 507	2BHK	58.14	626	9.28	100	3.51	38	4.52	49	75.45	812
108, 308, 508	2BHK	58.35	628	9.28	100	3.51	38	4.52	49	75.66	814
109, 309, 509	2BHK	58.13	626	9.28	100	3.51	38	4.52	49	75.44	812
110, 310, 510	3BHK	84.42	909	15.23	164	3.57	38	9.24	99	112.46	1211

The dimensions mentioned in sq.m. are valid and dimensions mentioned in sq.ft. are for information only. Conversion table is; 1 sq.m. = 10.764 sq.ft. & 1 m. = 3.28 ft.



VTP ALPINE

FLOOR PLAN
Floor Nos. - 2, 4



FLAT NO.	TYPE	BASIC CARPET		ENCL. BALCONY		UTILITY		DECK		TOTAL CARPET	
		SQ.M.	SQ.FT.	SQ.M.	SQ.FT.	SQ.M.	SQ.FT.	SQ.M.	SQ.FT.	SQ.M.	SQ.FT.
201, 401	3BHK	87.15	938	14.36	155	3.57	38	9.72	105	114.8	1236
202, 402	2BHK	57.51	619	9.59	103	3.51	38	4.05	44	74.66	804
203, 403	2BHK	57.71	621	9.59	103	3.51	38	4.05	44	74.86	806
204, 404	2BHK	57.51	619	9.59	103	3.51	38	4.05	44	74.66	804
205, 405	3BHK	87.24	939	14.3	154	3.57	38	9.72	105	114.83	1236
206, 406	3BHK	85.01	915	14.3	154	3.57	38	9.72	105	112.6	1212
207, 407	2BHK	57.51	619	9.59	103	3.51	38	4.05	44	74.66	804
208, 408	2BHK	57.71	621	9.59	103	3.51	38	4.05	44	74.86	806
209, 409	2BHK	57.51	619	9.59	103	3.51	38	4.05	44	74.66	804
210, 410	3BHK	85.01	915	14.3	154	3.57	38	9.72	105	112.6	1212

The dimensions mentioned in sq.m. are valid and dimensions mentioned in sq.ft. are for information only. Conversion table is; 1 sq.m. = 10.764 sq.ft. & 1 m. = 3.28 ft.



VTP ALPINE

FLOOR PLAN
Floor No. - 6



FLAT NO.	TYPE	BASIC CARPET		ENCL. BALCONY		UTILITY		DECK		TOTAL CARPET	
		SQ.M.	SQ.FT.	SQ.M.	SQ.FT.	SQ.M.	SQ.FT.	SQ.M.	SQ.FT.	SQ.M.	SQ.FT.
601	3BHK	87.24	939	14.36	155	3.57	38	8.85	95	114.02	1227
602	2BHK	57.51	619	9.59	103	3.51	38	3.15	34	73.76	794
603	2BHK	57.71	621	9.59	103	3.51	38	3.15	34	73.96	796
604	2BHK	57.51	619	9.59	103	3.51	38	3.15	34	73.76	794
605	3BHK	87.24	939	14.3	154	3.57	38	8.85	95	113.96	1227
606	3BHK	85.01	915	14.3	154	3.57	38	8.85	95	111.73	1203
607	2BHK	57.51	619	9.59	103	3.51	38	3.15	34	73.76	794
608	2BHK	57.71	621	9.59	103	3.51	38	3.15	34	73.96	796
609	2BHK	57.51	619	9.59	103	3.51	38	3.15	34	73.76	794
610	3BHK	85.01	915	14.3	154	3.57	38	8.85	95	111.73	1203

The dimensions mentioned in sq.m. are valid and dimensions mentioned in sq.ft. are for information only. Conversion table is; 1 sq.m. = 10.764 sq.ft. & 1 m. = 3.28 ft.



VTP ALPINE

FLOOR PLAN
Floor No. - 7



FLAT NO.	TYPE	BASIC CARPET		ENCL. BALCONY		UTILITY		DECK		TOTAL CARPET	
		SQ.M.	SQ.FT.	SQ.M.	SQ.FT.	SQ.M.	SQ.FT.	SQ.M.	SQ.FT.	SQ.M.	SQ.FT.
701	3BHK	86.64	933	15.31	165	3.57	38	8.33	90	113.85	1225
702	2BHK	58.13	626	9.28	100	3.51	38	4.52	49	75.44	812
703	2BHK	58.34	628	9.28	100	3.51	38	4.52	49	75.65	814
704	2BHK	58.14	626	9.28	100	3.51	38	4.52	49	75.45	812
705	3BHK	86.64	933	15.31	165	3.57	38	8.33	90	113.85	1225
706	3BHK	84.42	909	15.31	165	3.57	38	8.33	90	111.63	1202
707	2BHK	58.13	626	9.28	100	3.51	38	4.52	49	75.44	812
708	2BHK	58.34	628	9.28	100	3.51	38	4.52	49	75.65	814
709	2BHK	58.13	626	9.28	100	3.51	38	4.52	49	75.44	812
710	3BHK	84.42	909	15.31	165	3.57	38	8.33	90	111.63	1202

The dimensions mentioned in sq.m. are valid and dimensions mentioned in sq.ft. are for information only. Conversion table is; 1 sq.m. = 10.764 sq.ft. & 1 m. = 3.28 ft.



VTP ALPINE

FLOOR PLAN
Floor No. - 8



FLAT NO.	TYPE	BASIC CARPET		ENCL. BALCONY		UTILITY		DECK		TOTAL CARPET	
		SQ.M.	SQ.FT.	SQ.M.	SQ.FT.	SQ.M.	SQ.FT.	SQ.M.	SQ.FT.	SQ.M.	SQ.FT.
801	REFUGE										
802	2BHK	57.51	619	9.59	103	3.51	38	2.43	26	73.04	786
803	2BHK	57.71	621	9.59	103	3.51	38	2.43	26	73.24	788
804	2BHK	57.51	619	9.59	103	3.51	38	2.43	26	73.04	786
805	3BHK	87.24	939	14.37	155	3.57	38	7.92	85	113.1	1217
806	3BHK	85.01	915	14.4	155	3.57	38	7.92	85	110.87	1193
807	2BHK	57.51	619	9.59	103	3.51	38	2.43	26	73.04	786
808	2BHK	57.71	621	9.59	103	3.51	38	2.43	26	73.24	788
809	2BHK	57.51	619	9.59	103	3.51	38	2.43	26	73.04	786
810	REFUGE										

The dimensions mentioned in sq.m. are valid and dimensions mentioned in sq.ft. are for information only. Conversion table is; 1 sq.m. = 10.764 sq.ft. & 1 m. = 3.28 ft.



VTP ALPINE

FLOOR PLAN
Floor No. - 9



FLAT NO.	TYPE	BASIC CARPET		ENCL. BALCONY		UTILITY		DECK		TOTAL CARPET	
		SQ.M.	SQ.FT.	SQ.M.	SQ.FT.	SQ.M.	SQ.FT.	SQ.M.	SQ.FT.	SQ.M.	SQ.FT.
901	3BHK	86.51	931	15.3	165	3.57	38	7.56	81	112.94	1216
902	2BHK	58.13	626	9.28	100	3.51	38	4.52	49	75.44	812
903	2BHK	58.34	628	9.28	100	3.51	38	4.52	49	75.65	814
904	2BHK	58.13	626	9.28	100	3.51	38	4.52	49	75.44	812
905	3BHK	86.51	931	15.3	165	3.57	38	7.56	81	112.94	1216
906	3BHK	84.42	909	15.3	165	3.57	38	7.56	81	110.85	1193
907	2BHK	58.13	626	9.28	100	3.51	38	4.52	49	75.44	812
908	2BHK	58.34	628	9.28	100	3.51	38	4.52	49	75.65	814
909	2BHK	58.13	626	9.28	100	3.51	38	4.52	49	75.44	812
910	3BHK	84.42	909	15.3	165	3.57	38	7.56	81	110.85	1193

The dimensions mentioned in sq.m. are valid and dimensions mentioned in sq.ft. are for information only. Conversion table is; 1 sq.m. = 10.764 sq.ft. & 1 m. = 3.28 ft.



VTP ALPINE

FLOOR PLAN
Floor No. - 10



FLAT NO.	TYPE	BASIC CARPET		ENCL. BALCONY		UTILITY		DECK		TOTAL CARPET	
		SQ.M.	SQ.FT.	SQ.M.	SQ.FT.	SQ.M.	SQ.FT.	SQ.M.	SQ.FT.	SQ.M.	SQ.FT.
1001	3BHK	87.46	941	14.25	153	3.57	38	7.51	81	112.79	1214
1002	2BHK	57.43	618	9.58	103	3.51	38	3.84	41	74.36	800
1003	2BHK	57.64	620	9.58	103	3.51	38	3.84	41	74.57	803
1004	2BHK	57.43	618	9.58	103	3.51	38	3.84	41	74.36	800
1005	3BHK	87.24	939	14.37	155	3.57	38	7.71	83	112.89	1215
1006	3BHK	85.04	915	14.2	152	3.57	38	7.51	81	110.28	1187
1007	2BHK	57.43	618	9.58	103	3.51	38	3.84	41	74.36	800
1008	2BHK	57.6	620	9.58	103	3.51	38	3.84	41	74.53	802
1009	2BHK	57.43	618	9.58	103	3.51	38	3.84	41	74.36	800
1010	3BHK	85.04	915	14.2	152	3.57	38	7.71	83	110.48	1189

The dimensions mentioned in sq.m. are valid and dimensions mentioned in sq.ft. are for information only. Conversion table is; 1 sq.m. = 10.764 sq.ft. & 1 m. = 3.28 ft.



VTP ALPINE

FLOOR PLAN

Floor Nos. - 11, 15, 17, 19, 21



FLAT NO.	TYPE	BASIC CARPET		ENCL. BALCONY		UTILITY		DECK		TOTAL CARPET	
		SQ.M.	SQ.FT.	SQ.M.	SQ.FT.	SQ.M.	SQ.FT.	SQ.M.	SQ.FT.	SQ.M.	SQ.FT.
1101, 1301, 1501, 1701, 1901, 2101	3BHK	86.64	933	15.3	165	3.57	38	9.24	99	114.75	1235
1102, 1302, 1502, 1702, 1902, 2102	2BHK	58.11	625	9.28	100	3.4	37	4.52	49	75.31	811
1103, 1303, 1503, 1703, 1903, 2103	2BHK	58.29	627	9.28	100	3.4	37	4.52	49	75.49	813
1104, 1304, 1504, 1704, 1904, 2104	2BHK	58.11	625	9.28	100	3.4	37	4.52	49	75.31	811
1105, 1305, 1505, 1705, 1905, 2105	3BHK	86.64	933	15.31	165	3.57	38	9.24	99	114.76	1235
1106, 1306, 1506, 1706, 1906, 2106	3BHK	84.42	909	15.23	164	3.57	38	9.24	99	112.46	1211
1107, 1307, 1507, 1707, 1907, 2107	2BHK	58.11	625	9.28	100	3.51	38	4.52	49	75.42	812
1108, 1308, 1508, 1708, 1908, 2108	2BHK	58.29	627	9.28	100	3.51	38	4.52	49	75.6	814
1109, 1309, 1509, 1709, 1909, 2109	2BHK	58.11	625	9.28	100	3.51	38	4.52	49	75.42	812
1110, 1310, 1510, 1710, 1910, 2110	3BHK	84.42	909	15.23	164	3.57	38	9.24	99	112.46	1211

The dimensions mentioned in sq.m. are valid and dimensions mentioned in sq.ft. are for information only. Conversion table is; 1 sq.m. = 10.764 sq.ft. & 1 m. = 3.28 ft.



VTP ALPINE

FLOOR PLAN
Floor Nos. - 12, 14, 16, 20, 22



FLAT NO.	TYPE	BASIC CARPET		ENCL. BALCONY		UTILITY		DECK		TOTAL CARPET	
		SQ.M.	SQ.FT.	SQ.M.	SQ.FT.	SQ.M.	SQ.FT.	SQ.M.	SQ.FT.	SQ.M.	SQ.FT.
1201, 1401, 1601, 1801, 2001, 2201	3BHK	87.43	941	14.25	153	3.57	38	9.31	100	114.56	1233
1202, 1402, 1602, 1802, 2002, 2202	2BHK	57.43	618	9.58	103	3.51	38	3.84	41	74.36	800
1203, 1403, 1603, 1803, 2003, 2203	2BHK	57.64	620	9.58	103	3.51	38	3.84	41	74.57	803
1204, 1404, 1604, 1804, 2004, 2204	2BHK	57.43	618	9.58	103	3.51	38	3.84	41	74.36	800
1205, 1405, 1605, 1805, 2005, 2205	3BHK	87.43	941	14.25	153	3.57	38	9.31	100	114.56	1233
1206, 1406, 1606, 1806, 2006, 2206	3BHK	85.04	915	14.2	152	3.57	38	9.31	100	112.08	1206
1207, 1407, 1607, 1807, 2007, 2207	2BHK	57.43	618	9.58	103	3.51	38	3.84	41	74.36	800
1208, 1408, 1608, 1808, 2008, 2208	2BHK	57.6	620	9.58	103	3.51	38	3.84	41	74.53	802
1209, 1409, 1609, 1909, 2009, 2209	2BHK	57.43	618	9.58	103	3.51	38	3.84	41	74.36	800
1210, 1410, 1610, 1910, 2010, 2210	3BHK	85.04	915	14.2	152	3.57	38	9.31	100	112.08	1206

The dimensions mentioned in sq.m. are valid and dimensions mentioned in sq.ft. are for information only. Conversion table is; 1 sq.m. = 10.764 sq.ft. & 1 m. = 3.28 ft.



VTP ALPINE

FLOOR PLAN
Floor No. - 13



FLAT NO.	TYPE	BASIC CARPET		ENCL. BALCONY		UTILITY		DECK		TOTAL CARPET	
		SQ.M.	SQ.FT.	SQ.M.	SQ.FT.	SQ.M.	SQ.FT.	SQ.M.	SQ.FT.	SQ.M.	SQ.FT.
1301	REFUGE										
1302	2BHK	58.11	625	9.28	100	3.4	37	4.52	49	75.31	811
1303	2BHK	58.29	627	9.28	100	3.4	37	4.52	49	75.49	813
1304	2BHK	58.11	625	9.28	100	3.4	37	4.52	49	75.31	811
1305	3BHK	86.64	933	15.31	165	3.57	38	9.24	99	114.76	1235
1306	3BHK	84.42	909	15.23	164	3.57	38	9.24	99	112.46	1211
1307	2BHK	58.11	625	9.28	100	3.51	38	4.52	49	75.42	812
1308	2BHK	58.29	627	9.28	100	3.51	38	4.52	49	75.6	814
1309	2BHK	58.11	625	9.28	100	3.51	38	4.52	49	75.42	812
1310	REFUGE										

The dimensions mentioned in sq.m. are valid and dimensions mentioned in sq.ft. are for information only. Conversion table is; 1 sq.m. = 10.764 sq.ft. & 1 m. = 3.28 ft.



VTP ALPINE

FLOOR PLAN
Floor No. - 18



FLAT NO.	TYPE	BASIC CARPET		ENCL. BALCONY		UTILITY		DECK		TOTAL CARPET	
		SQ.M.	SQ.FT.	SQ.M.	SQ.FT.	SQ.M.	SQ.FT.	SQ.M.	SQ.FT.	SQ.M.	SQ.FT.
1801	REFUGE										
1802	2BHK	57.43	618	9.58	103	3.51	38	3.84	41	74.36	800
1803	2BHK	57.64	620	9.58	103	3.51	38	3.84	41	74.57	803
1804	2BHK	57.43	618	9.58	103	3.51	38	3.84	41	74.36	800
1805	3BHK	87.43	941	14.25	153	3.57	38	9.31	100	114.56	1233
1806	3BHK	85.04	915	14.2	152	3.57	38	9.31	100	112.08	1206
1807	2BHK	57.43	618	9.58	103	3.51	38	3.84	41	74.36	800
1808	2BHK	57.6	620	9.58	103	3.51	38	3.84	41	74.53	802
1809	2BHK	57.43	618	9.58	103	3.51	38	3.84	41	74.36	800
1810	REFUGE										

The dimensions mentioned in sq.m. are valid and dimensions mentioned in sq.ft. are for information only. Conversion table is; 1 sq.m. = 10.764 sq.ft. & 1 m. = 3.28 ft.

**GET DOWN
TO BUSINESS
AT VTP TOWN
SQUARE**



VTP
TOWN
SQUARE

SPECIFICATIONS

Flooring

- Lift Lobby: Vitrified tiles (800×800)
- All showroom, Offices, Toitels, Smoking zone- Vitrified tiles (600×600)
- Terraces: Anti-skid ceramic tiles (600 × 600)
- Lobbies: Glossy vitrified tiles (800 × 800)

Interior

- Luster paint for Lobby area, OBD for offices & showrooms

Exterior

- Texture of acrylic emulsion paints as per elevation treatment

Environmental measure

- Rain water harvesting

Electrical fittings

- 1.5 kva/100 sq.ft. of office space electricity supply at single point
- Ventilation and exhaust system for all common area
- Dedicated ODU space for AC units, separate for each office
- Wet riser/ sprinkle/ fire extinguisher provided as per statutory govt. norms in all the common areas of building

Power back-up

- 100% DG Back-up for lifts, offices, showroom & common areas

Automation

- Mechanical ventilation for basement

Lifts

- S.S finish 16 passenger,
- 3 lifts- Thyssenkrupp or kone or OTIS

House keeping

- Professional facility management agencies



HYPER MARKET
42.30 X 19.71
139'2" X 64'8"

VTP TOWN SQUARE

LOWER GROUND FLOOR PLAN



TYPE	BASIC CARPET		ENCL. BALCONY		TOTAL CARPET	
	SQ.M.	SQ.FT.	SQ.M.	SQ.FT.	SQ.M.	SQ.FT.
HYPERMARKET	748.13	8053	-	-	748.13	8053



VTP TOWN SQUARE

UPPER GROUND FLOOR PLAN



TYPE	BASIC CARPET		ENCL. BALCONY		TOTAL CARPET	
	SO.M.	SO.FT.	SO.M.	SO.FT.	SO.M.	SO.FT.
Shop 01	179.25	1,929	-	-	179.25	1,929
Shop 02	26.99	291	-	-	26.99	291
Shop 03	26.99	291	-	-	26.99	291
Shop 04	26.98	290	-	-	26.98	290
Shop 05	26.92	290	-	-	26.92	290
Shop 06	52.20	562	-	-	52.20	562
Shop 07	61.43	661	-	-	61.43	661
Shop 08	30.01	323	-	-	30.01	323
Shop 09	30.72	331	-	-	30.72	331
Shop 10	31.54	339	-	-	31.54	339
Shop 11	32.18	346	-	-	32.18	346
Shop 12	33.72	363	-	-	33.72	363
Shop 13	46.46	500	-	-	46.46	500

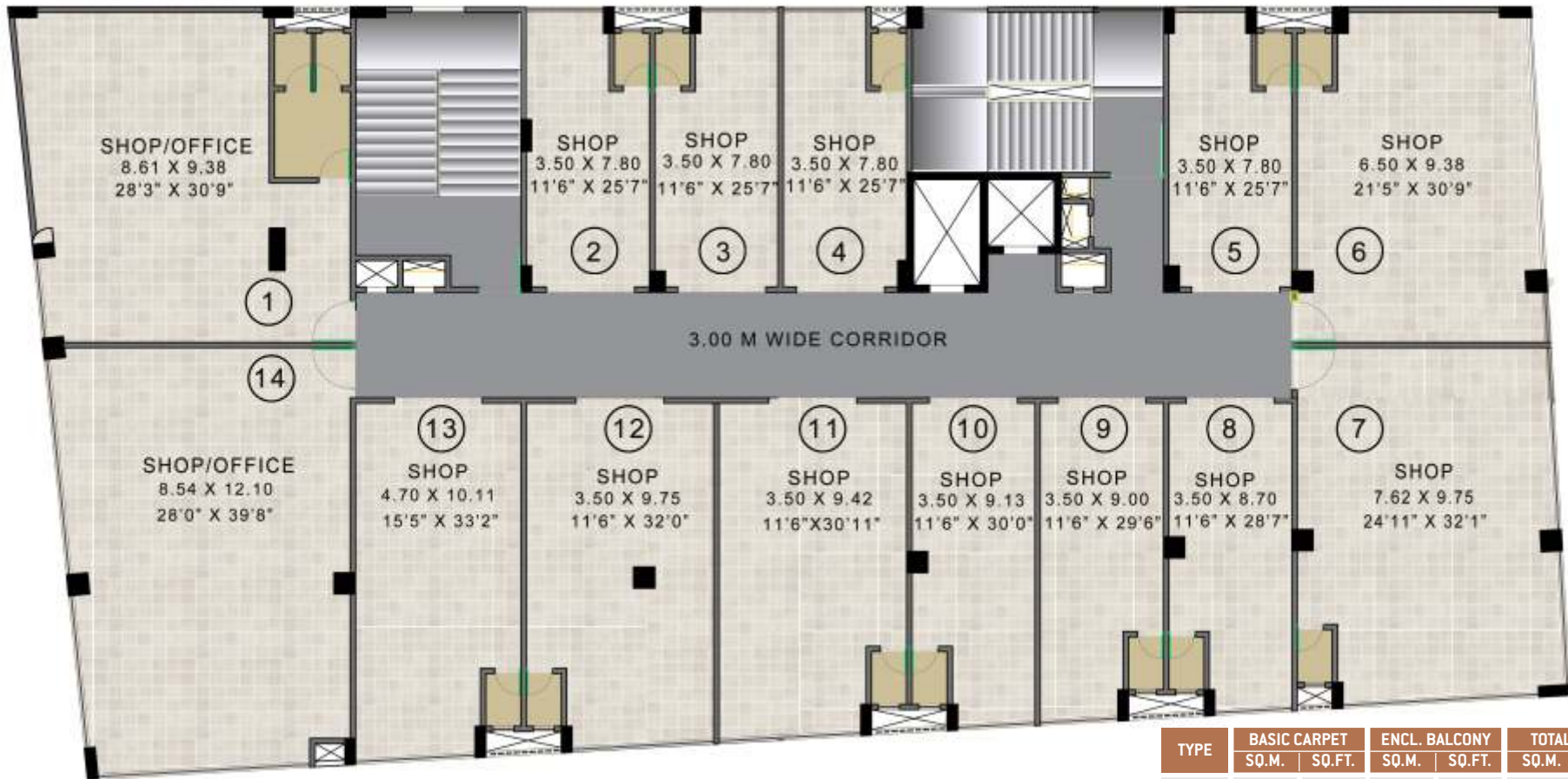


VTP TOWN SQUARE

FIRST FLOOR PLAN



TYPE	BASIC CARPET		ENCL. BALCONY		TOTAL CARPET	
	SQ.M.	SQ.FT.	SQ.M.	SQ.FT.	SQ.M.	SQ.FT.
Shop 01	56.61	609	27.24	293	83.85	903
Shop 02	26.99	291	0.00	0	26.99	291
Shop 03	26.99	291	0.00	0	26.99	291
Shop 04	26.98	290	0.00	0	26.98	290
Shop 05	26.92	290	0.00	0	26.92	290
Shop 06	45.66	491	17.37	187	63.03	678
Shop 07	45.85	494	26.57	286	72.42	780
Shop 08	30.01	323	0.00	0	30.01	323
Shop 09	30.72	331	0.00	0	30.72	331
Shop 10	31.54	339	0.00	0	31.54	339
Shop 11	32.18	346	0.00	0	32.18	346
Shop 12	33.72	363	0.00	0	33.72	363
Shop 13	46.46	500	0.00	0	46.46	500
Shop 14	71.68	772	22.42	241	94.10	1,013



TYPE	BASIC CARPET		ENCL. BALCONY		TOTAL CARPET	
	SQ.M.	SQ.FT.	SQ.M.	SQ.FT.	SQ.M.	SQ.FT.
Shop 01	56.61	609	27.24	293	83.85	903
Shop 02	26.99	291	0.00	0	26.99	291
Shop 03	26.99	291	0.00	0	26.99	291
Shop 04	26.98	290	0.00	0	26.98	290
Shop 05	26.92	290	0.00	0	26.92	290
Shop 06	45.66	491	17.37	187	63.03	678
Shop 07	45.85	494	26.57	286	72.42	780
Shop 08	30.01	323	0.00	0	30.01	323
Shop 09	30.72	331	0.00	0	30.72	331
Shop 10	31.54	339	0.00	0	31.54	339
Shop 11	49.46	532	0.00	0	49.46	532
Shop 12	51.21	551	0.00	0	51.21	551
Shop 13	46.46	500	0.00	0	46.46	500
Shop 14	71.72	772	22.42	241	94.14	1,013

VTP TOWN SQUARE

SECOND & THIRD FLOOR PLAN



www.vtprealty.in



Site address: Baner Next, Near Balewadi Stadium, Mahalunge, Pune.

MahaRERA Registration No. P52100007943, P52100009531, P52100009529, P52100019994, P52100020112, P52100019986, P52100020081, P52100020331, P52100008950 available at www.maharera.mahaonline.gov.in

Disclaimer: All representations are believed to be correct and envisaged by the developer/promoter. All art renderings, illustrations, photographs and pictures contained in this brochure are an artist's impression only and the same should not be construed to be the final images/views of the final project. The plans are only indicative and can be modified as liked by the developer before the launch. The printed material does not constitute a contract/offer of any type between the developer/promoter and the purchaser and shall supersede all statements, documents or representations made prior to signing of such sale and purchase agreement. Terms & conditions apply.

The content in this brochure is only indicative and does not imply the ownership of project Township Code Name Blue Waters by VTP Group / VTP Realty. Logo of VTP Realty is copyright and owned by VTP Realty.