



DIMENSIONS UNLIMITED

COPROMOTED BY



URBAN TREE GROUP

No. 8, 5th Street, Rutland Gate, Nungambakkam,
Chennai - 34 | www.urbantreehomes.com



CUSTOMER CARE
6600 5550



A WORLD OF MORE



MORE SPACE IN EVERY SQUARE FEET

Inspired by the best urban living, Amaze by Urban Tree is located at the heart of Chennai's newly emerging business epicenter – Porur. The property's intelligent design and strategic planning challenges the previously stagnant approach to space, conveniently adapting to modern living needs. Amaze features a common area that occupies less than 20% of the total space, making it one of the most space-efficient residential buildings in Chennai. Value engineering is the beating heart of Amaze, and with that Urban Tree provides you with more carpet space than most regular apartments claim.



A NEW DIMENSION OF LIVING

Urban Tree has created a distinct name for itself and is known for its penchant for creating homes that are consistently international in quality.

With meticulous planning and detailed architectural nuances, we are committed to delivering the finest quality of life. This has empowered us to refine a customer-centric approach with the highest degree of integrity and transparency.



KAAVIYA PROPERTIES has earned the reputation of being one of Chennai's trusted realty companies. We established our roots in the city in 1996 and have absorbed its culture to create strong values and virtues.



— URBAN TREE ADVANTAGES —



Luxury homes in prime locations, at affordable prices.



Quality uncompromised.



Green homes for healthier living.



100% transparency. No hidden charges.



We pay, if we delay.



Monthly newsletter with regular updates.



Regular customer meets every quarter.



2,000+ delighted customers.



1 out of every 4 units is sold through customer referral.



Schools

- Kidzee
- Velammal Vidyalaya
- EuroKids Pre-School
- Pon Vidyashram Group of CBSE Schools
- PSBB Millennium School

Colleges & Institutions

- MIOT Nursing College
- SRM, Ramapuram
- Meenakshi Ammal Dental College & Hospital
- Thiru Seven Hills Polytechnic College
- Sri Ramachandra College of Management

Hospitals

- Sri Ramachandra Hospital
- Parvathy Hospital
- Cardiocare Medical Solutions
- Meenakshi General Hospital
- Annai Grace Hospital

Restaurants

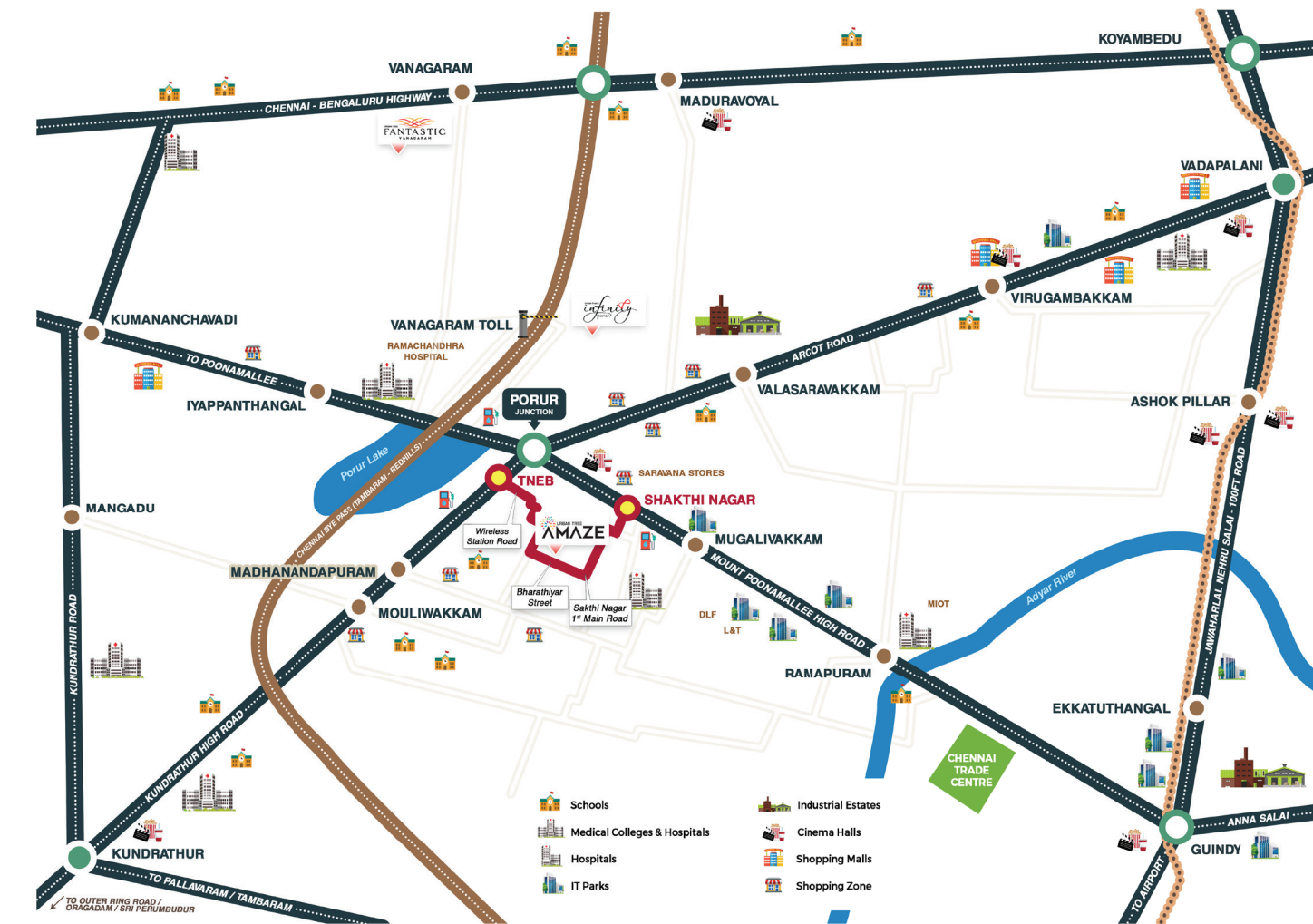
- Anjappar Chettinad Restaurant
- Domino's Pizza
- Dindigul Thalappakatti
- Adyar Ananda Bhavan
- Palmshore Restaurant

Shopping Malls

- Saravana Stores
- Forum Mall
- Chandra Mall

AT HOME AT THE HEART OF IT ALL

Strategically located in Porur, in the vicinity of the city's flourishing business, educational and entertainment hubs; Amaze bustles with the energy of modern urbanism. The development is surrounded by neighbourhoods that are at the forefront of culture and convenience, signalling the rapid growth of one of Chennai's hottest destinations.



SET FOR A RADICAL TRANSFORMATION

OMR 2.0

Poonamallee, the western gateway to Chennai, is emerging as the city's second IT highway. The location is attracting several realtors interested in developing IT parks, with metro rail connectivity being the key driver, sparking interest along the Mount-Poonamallee Road.

NH 32

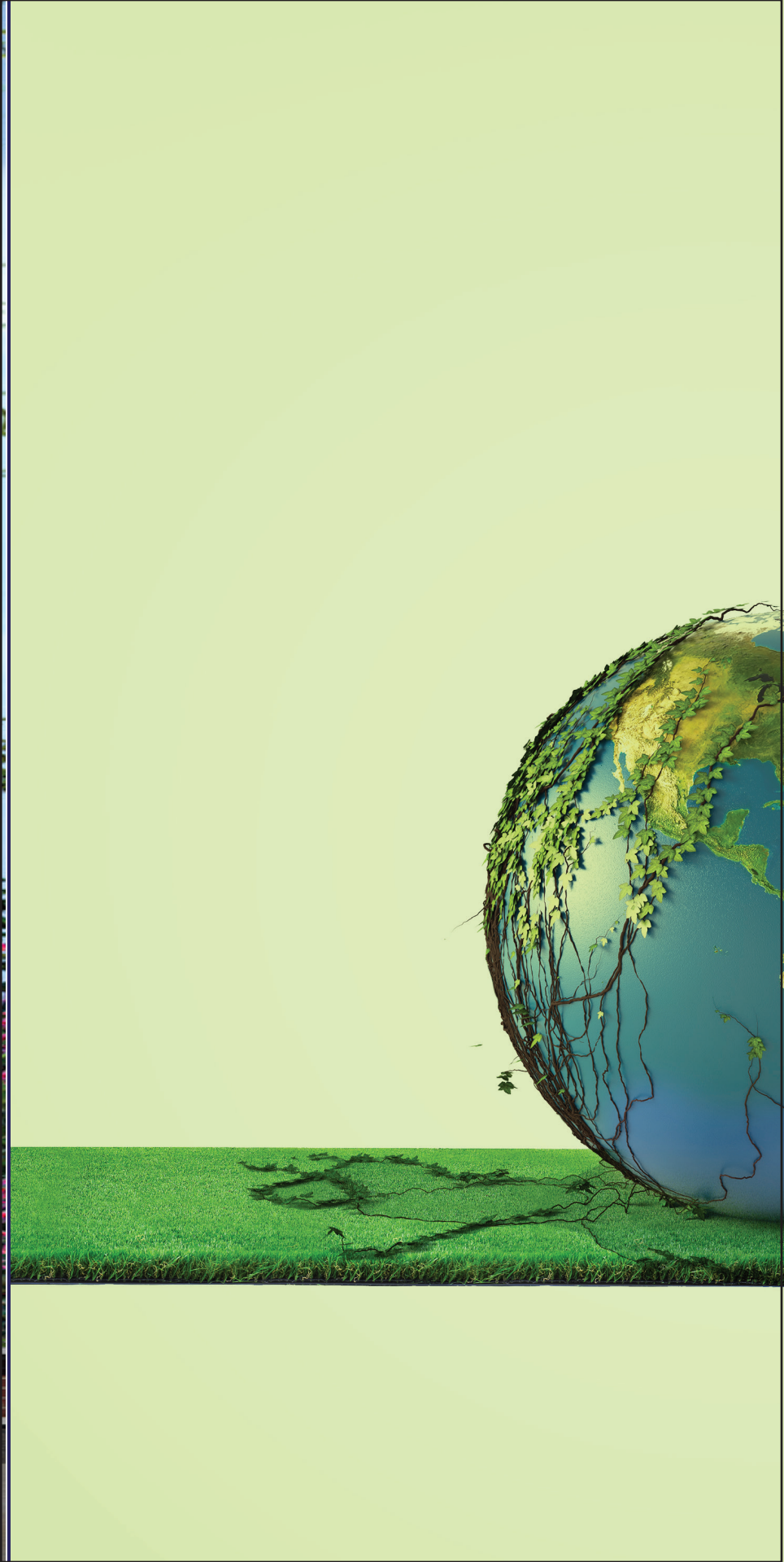
The Chennai Bypass is a full-access controlled expressway that interconnects four radial Indian National Highways around Chennai covering a distance of 32kms. from Perungalathur (near Tambaram) on NH 45 to Madhavaram on NH 5 via Maduravoyal.

PROPOSED DEVELOPMENTS

After Madhavaram and Kilambakkam, the Chennai Metropolitan Development Authority (CMDA) is exploring land parcels in western suburbs of Poonamallee to house the third bus terminus for long distance fleets.

Furthermore, the Chennai Metro Rail plans to extend one of its corridors in the phase II project — from Valasaravakkam to Poonamallee — that will cover a distance of nearly 13kms. with 10 stations. This extension from Valasaravakkam to Poonamallee will benefit thousands of people living in the western part of the city.

A NEW DIMENSION OF LIVING



GREEN LIVING, IT'S AN AMAZING FEELING

Amaze has been carefully designed with an abiding respect for nature. We make every effort to preserve the environment and enrich life responsibly. That is why this IGBC Pre-Certified Green Home is constructed in perfect harmony with nature.



In an effort to lower our carbon footprint, here are some of the holistic features implemented into our green-living initiative.



Climate Responsive Design



Larger Windows



Low VOC Paints



CFL & LED Lamps



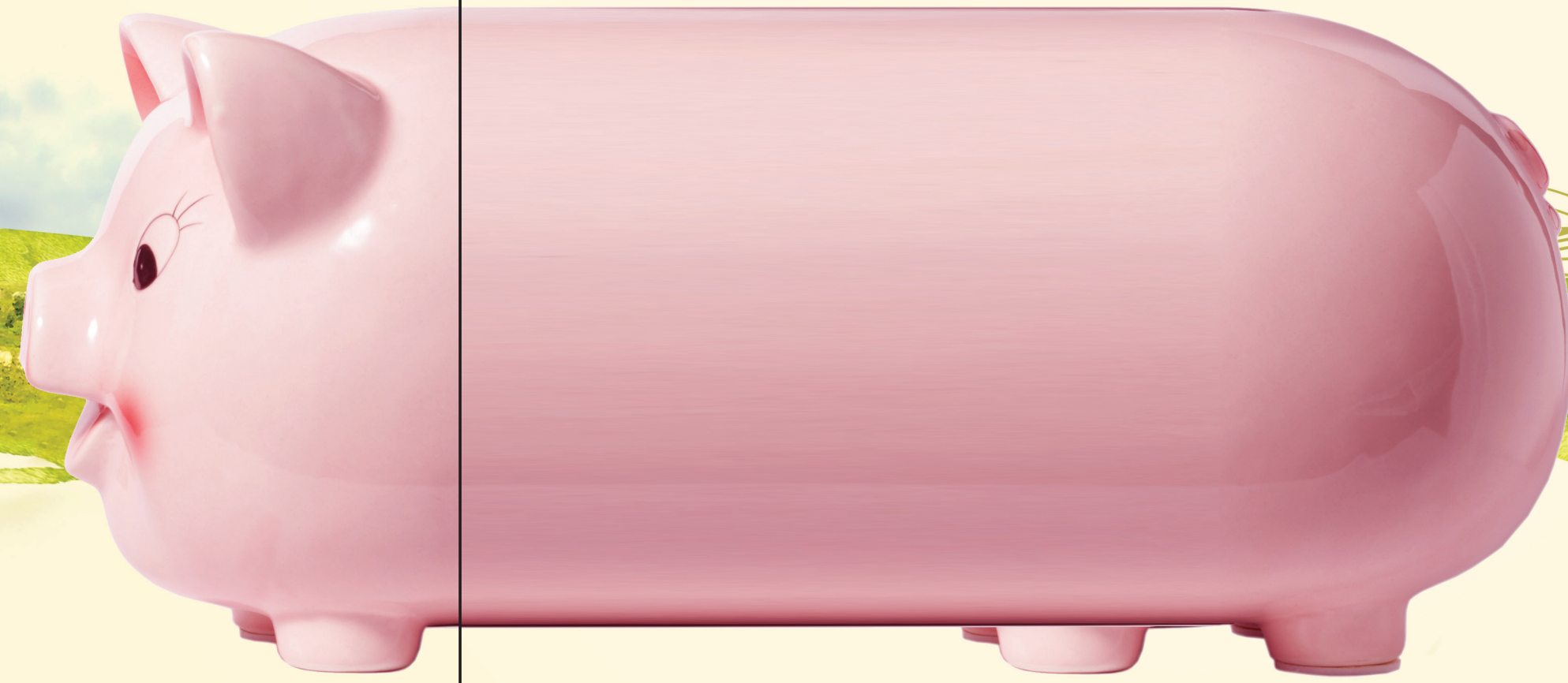
Water Efficient Fixtures





SAVE MORE WITH THE GREEN APPROACH

An effortless lifestyle is best complimented through increased benefits and savings. Through intense value-engineering, the green approach has vastly decreased the energy consumed by air conditioners and increased efficiency with the use of CFL and LeD bulbs. Larger windows with UV filters reduce the need for excessive indoor light usage and efficient sanitary faucets increase the amount of water saved. While you enjoy a larger carpet area maintenance for common area usage are reduced, all together saving up to almost ₹2.5 L each year. Which is why Amaze is an amazing investment opportunity for the new generation of eco-friendly home owners.



A WORLD OF SAVINGS WITH NEXT GENERATION HOMES

SAVINGS OF UP TO ₹2.5L EACH YEAR
SAVE UP TO ₹25L WITH MORE CARPET AREA



12%
Cooler homes



20%-25%
Water savings



18%-25%
Energy savings



HEAT
reducing
thermal roofing



Excellent daylight and
Ventilation



Efficient
Waste
Management



AMENITIES THAT WILL AMAZE YOU

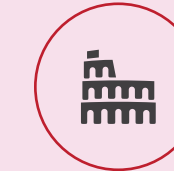
No effort has been spared in offering you the finest amenities that make life effortless. From the gymnasium to the mini theatre, every conceivable comfort is placed at your disposal.



AMENITIES



Outdoor Gym



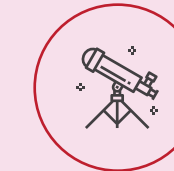
Amphitheatre



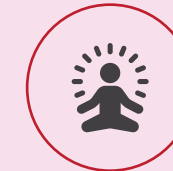
Food Counter



Landscaped Garden



Telescope Deck



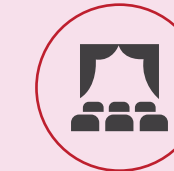
Yoga and Meditation Area



Organic Garden



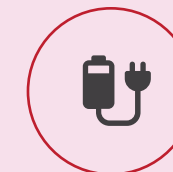
Cycle Rack



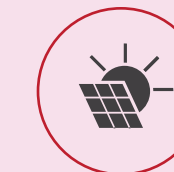
Mini Theatre



Guest Rooms



Electric Vehicle Charging Station



Solar Panels



Wi-Fi



Multipurpose Court



Power Backup

Gazebo | Reflexology path | Dedicated driver's/domestic help toilet | Visitor's car park
Kids play area with cork flooring | EB room | Visitor's lounge | Society office | Garbage disposal area
Car wash | Rainwater harvesting | Stretcher lift | Sewage treatment plant
Intercom | Facility manager's room