

A PROJECT BY

**RELIABLE**  
REALTORS



*... For The People Who Dream*



A PROJECT BY

# RELIABLE

REALTORS





# RELIABLE TOWNSHIP







A PROJECT BY

**RELIABLE**  
REALTORS





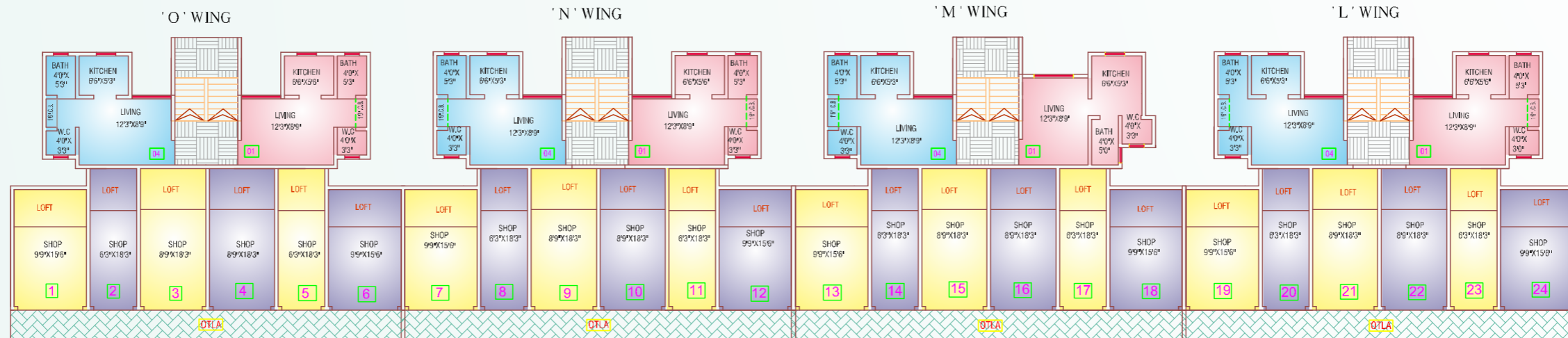
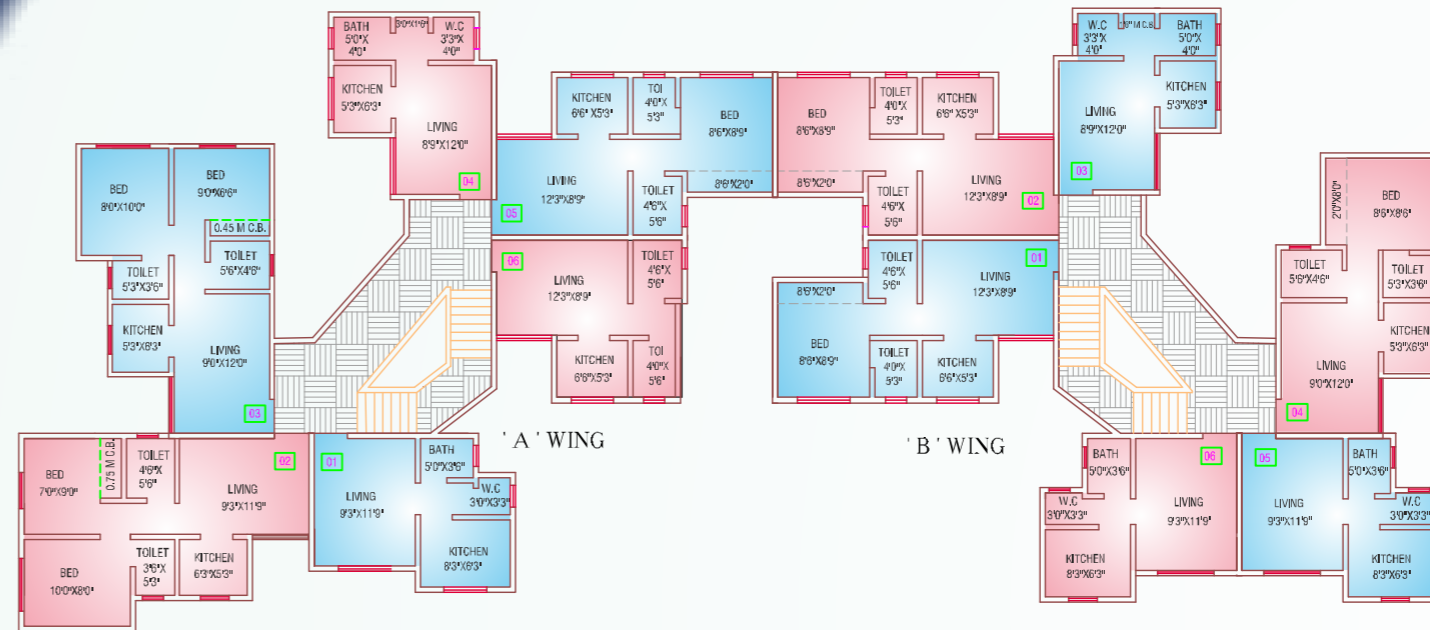
# RELIABLE TOWNSHIP

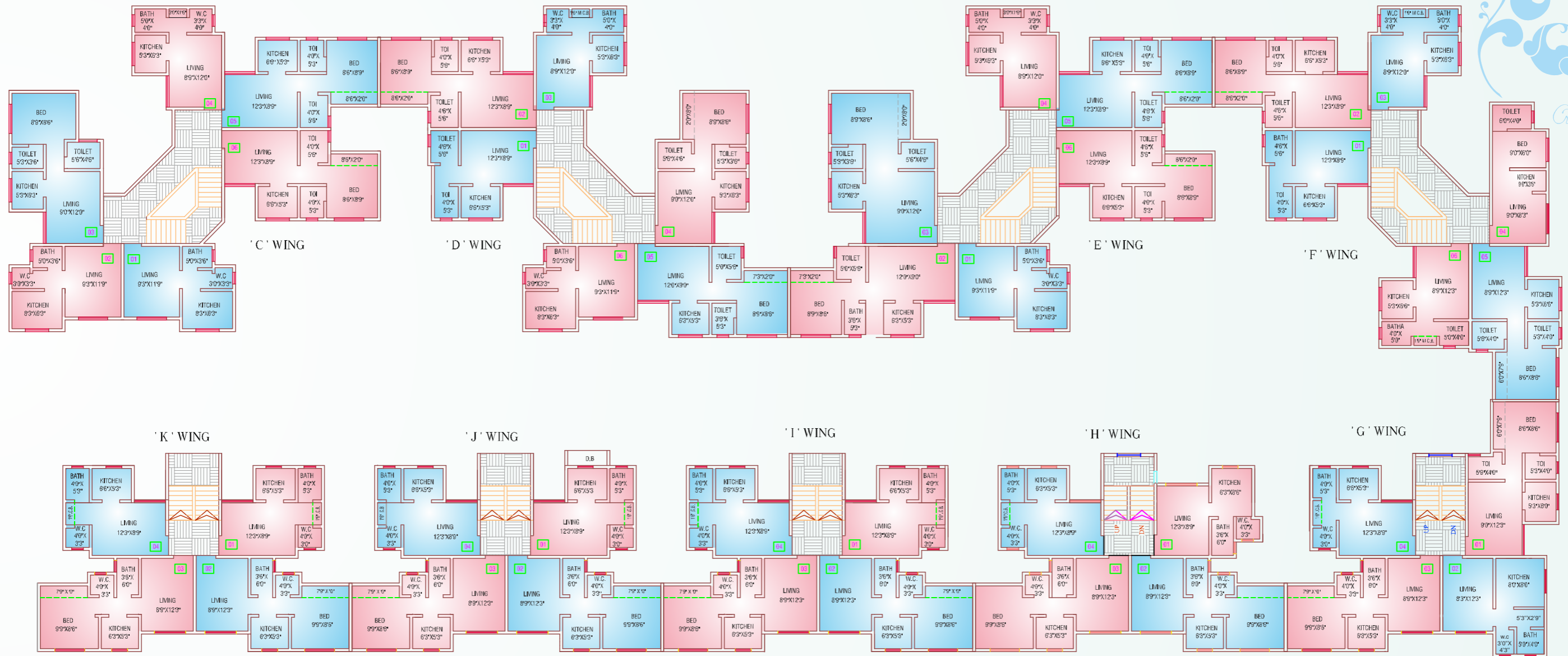




# RELIABLE

## TOWNSHIP

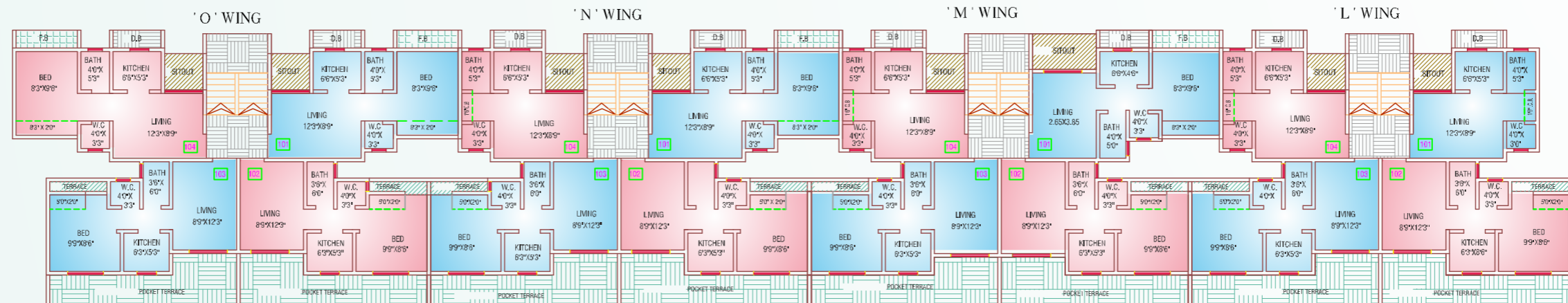
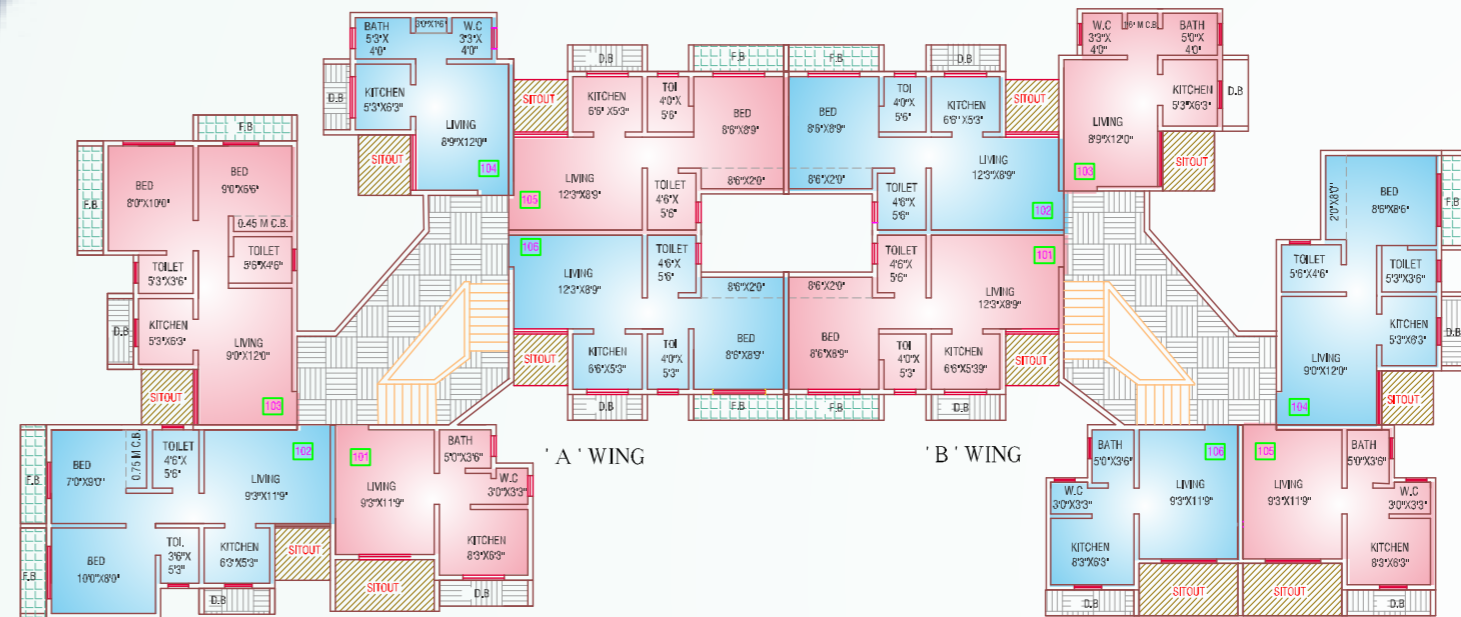




GROUND FLOOR PLAN

# RELIABLE

## TOWNSHIP





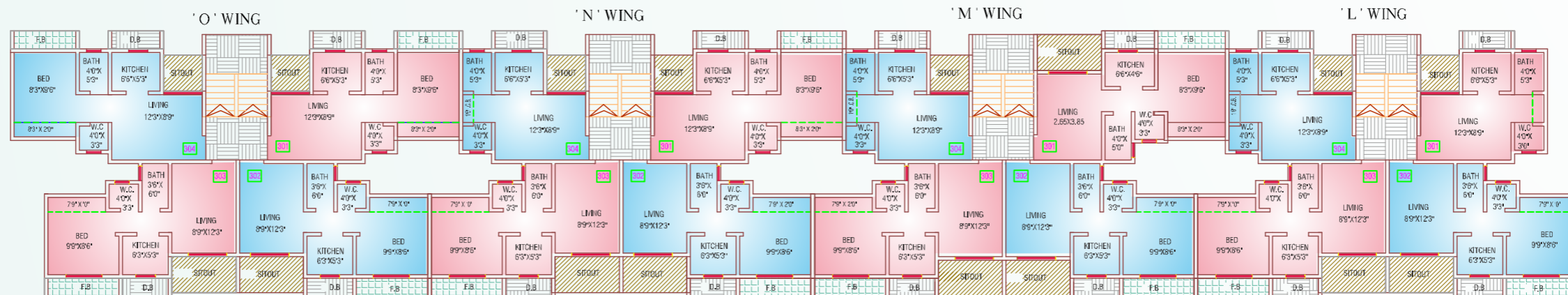
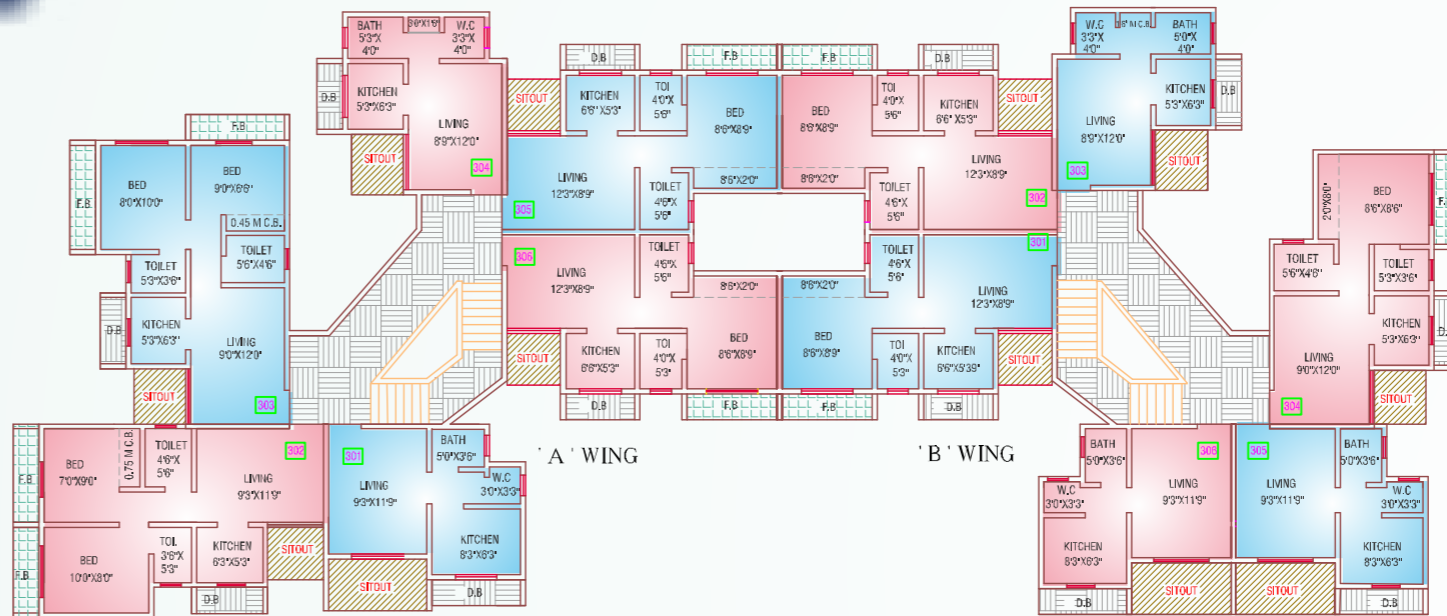


FIRST FLOOR PLAN



# RELIABLE

## TOWNSHIP





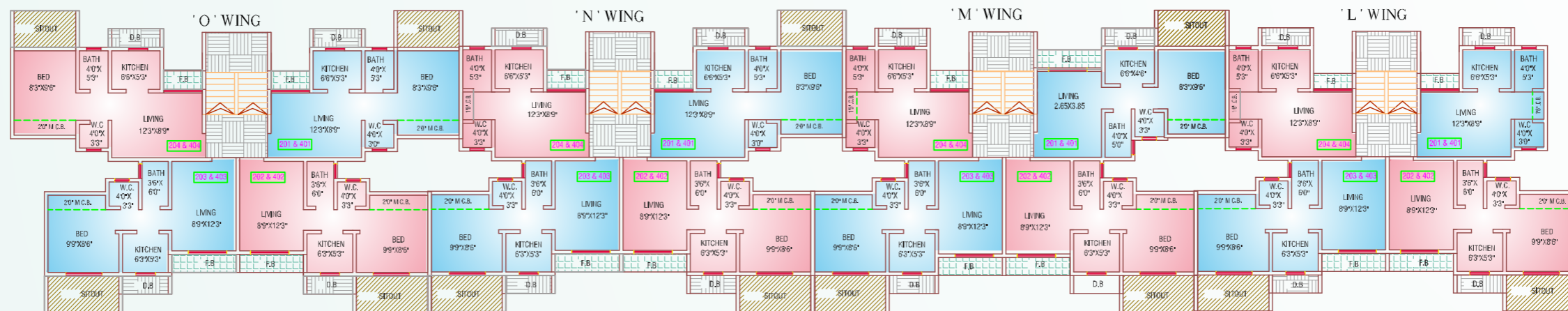
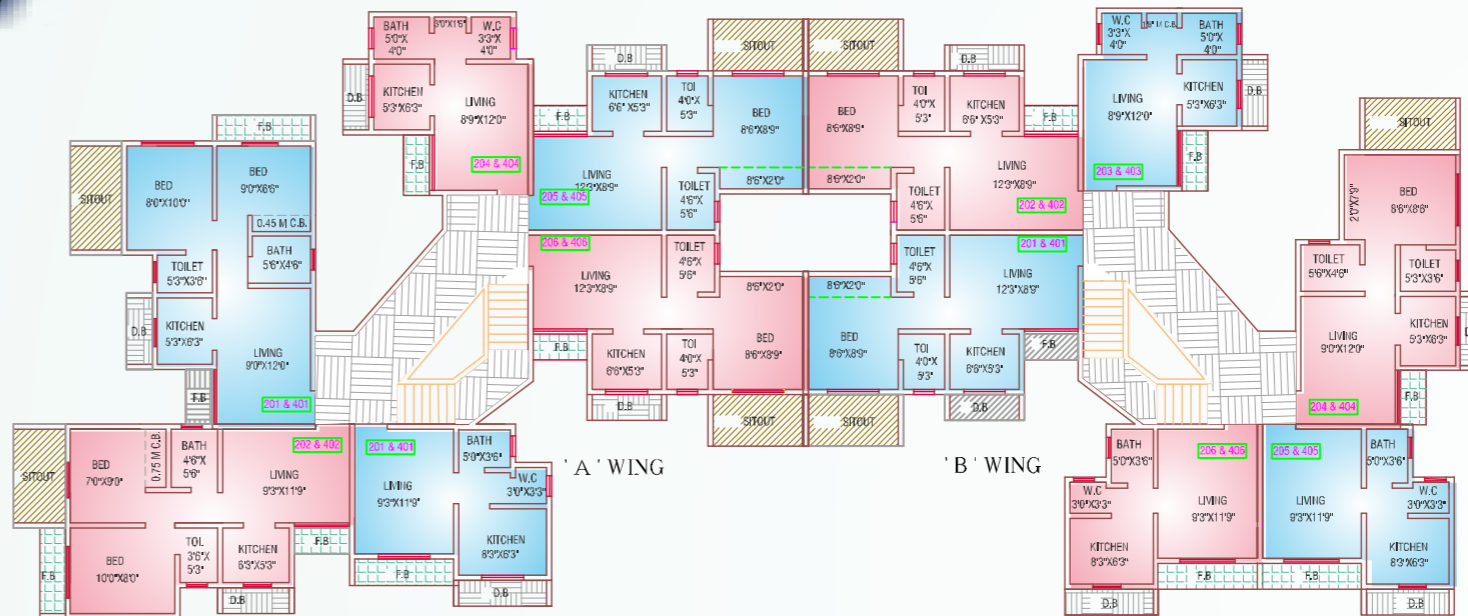


THIRD FLOOR PLAN

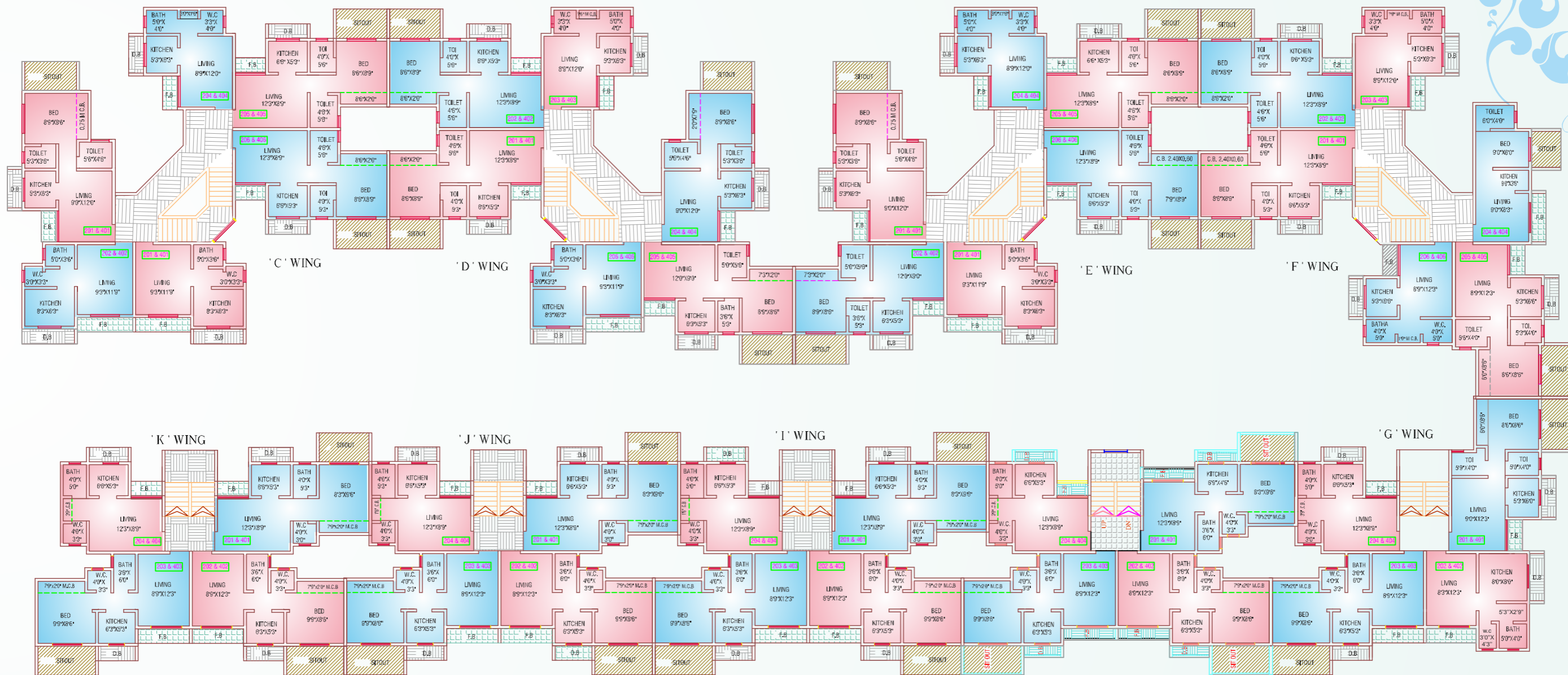


# RELIABLE

## TOWNSHIP

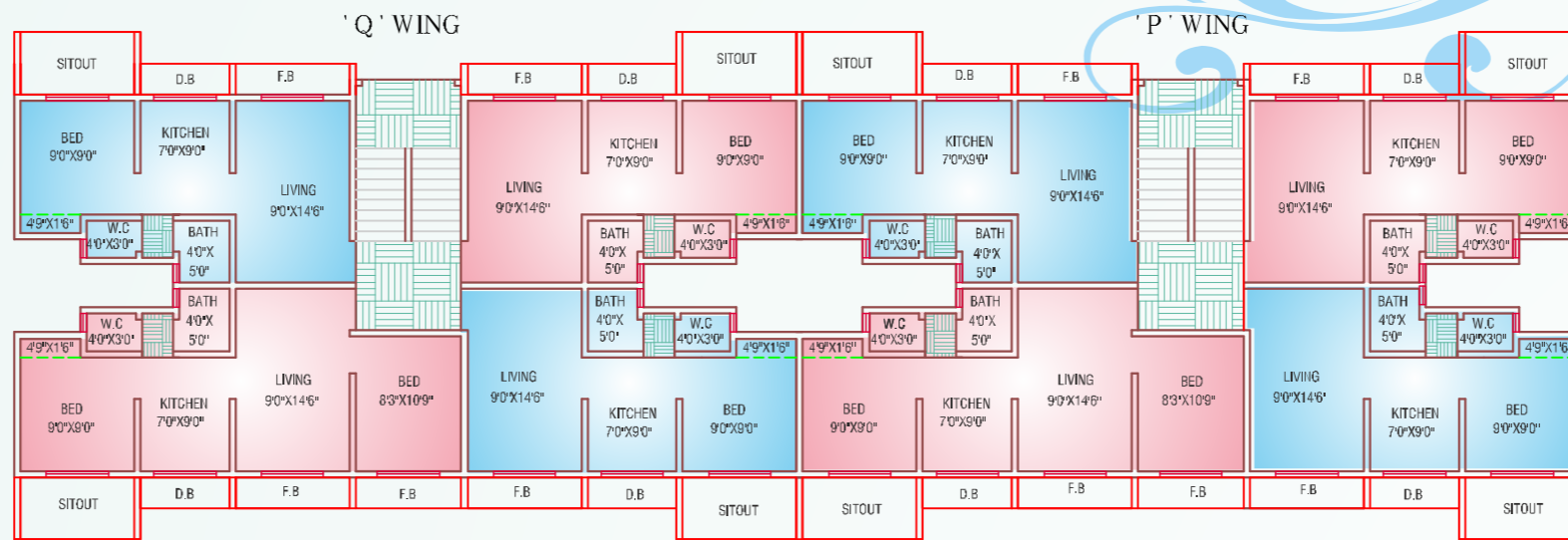




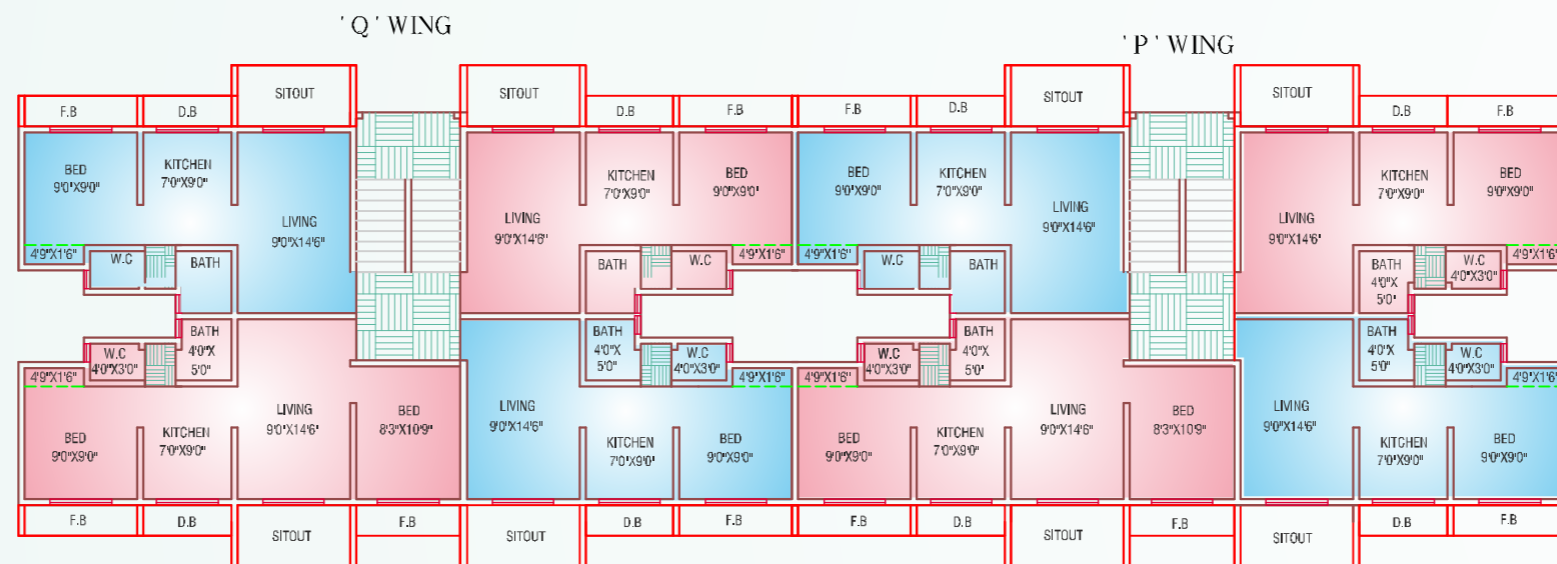


2nd & 4th FLOOR PLAN

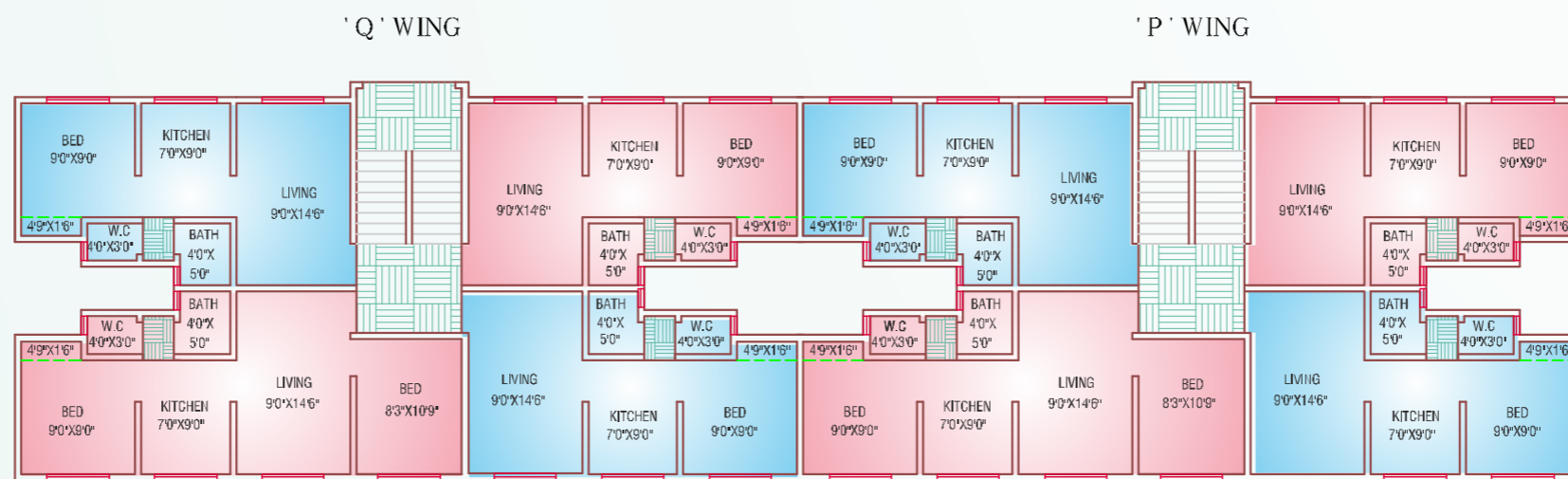




2nd, 4th FLOOR PLAN

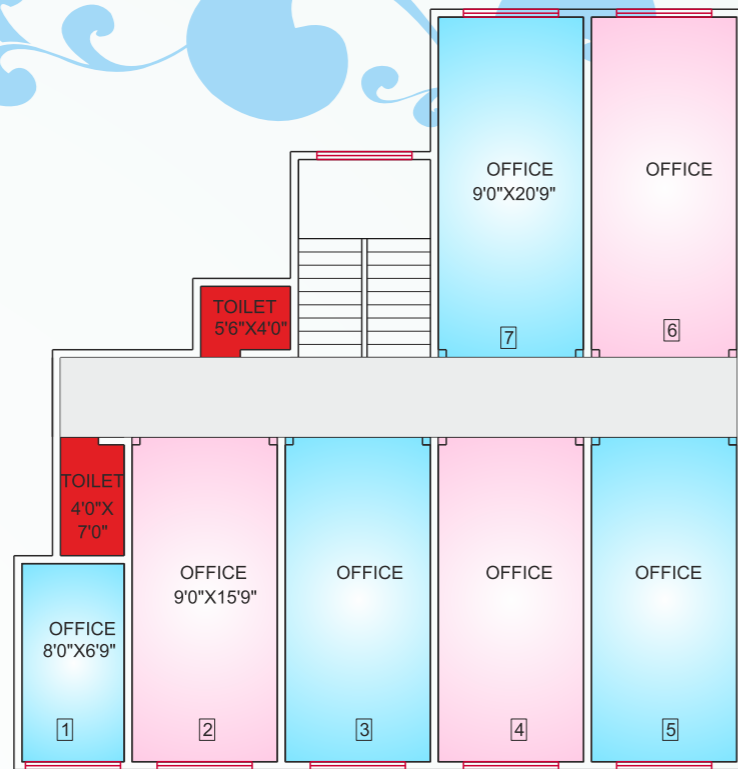


1st, 3rd, FLOOR PLAN

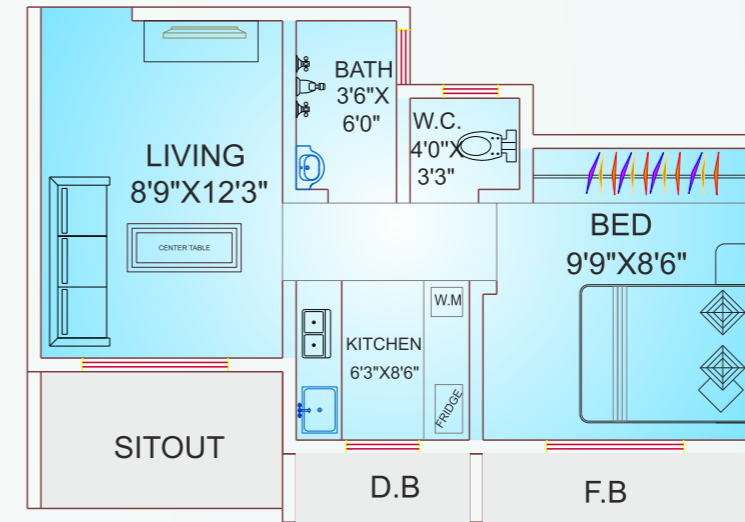
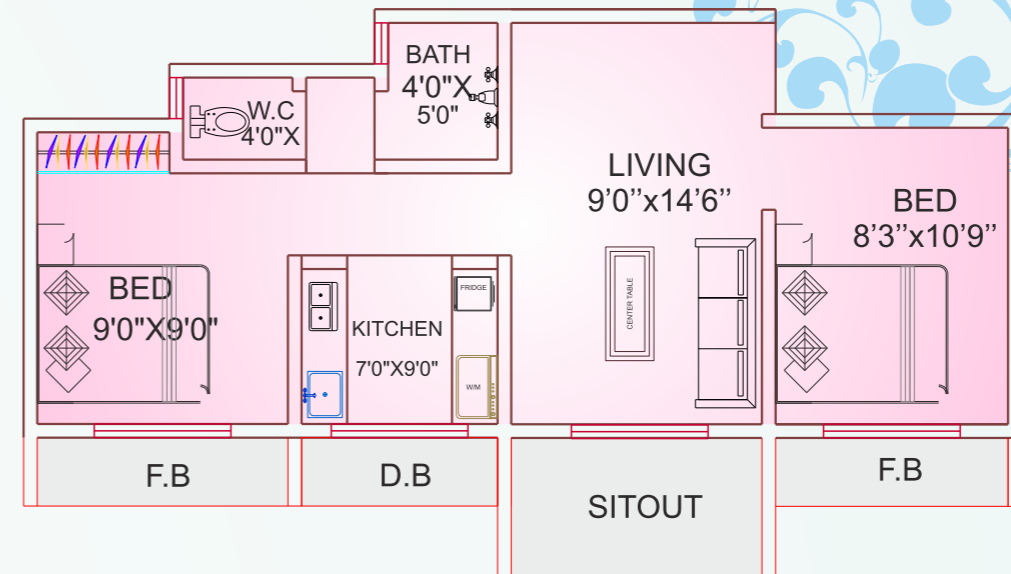


GROUND FLOOR PLAN

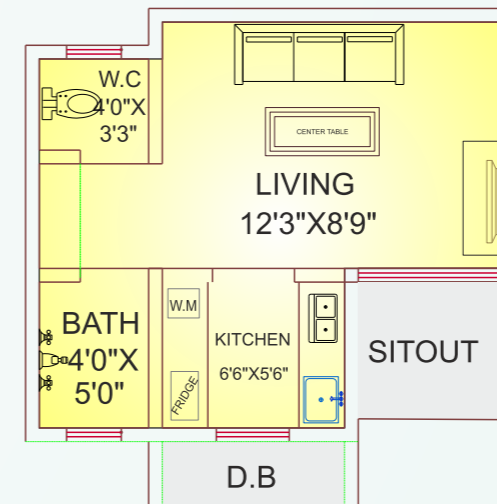




**TYPICAL FLOOR PLAN**



**GROUND FLOOR PLAN**





# AMENITIES



- Elegant Vitrified tiles flooring with skirting in all rooms.
- Modular kitchen with Fine finish granite platform with stainless steel sink.
- Concealed plumbing with quality sanitaryware and attractive C.P. Fittings.
- Open wall mixer and hand shower of good quality.
- Designer main door and other flush doors with fittings.
- Powder coated aluminium sliding windows.
- Anti skid flooring in bathroom and toilet.
- Full height glazed tiles in bathroom, W.C. & tiles upto beam level in kitchen over platform.
- Concealed copper wiring.
- Sufficient light points with modular switches.
- Corner POP False ceiling in living rooms & Bedrooms.
- Internal walls finished with smooth POP punning finish.
- Good quality paint on internal walls.
- 100% acrylic waterproof anti fungal paint on external walls.
- Lifestyle apartments.
- Well Planned flats with proper ventilation & light.
- Beautiful elevation & quality construction.
- Earth quake resistant RCC structure.
- Transportation available on site.

**Disclaimer :** The Plans, specifications, images and other details herein are only indicative and the Developer/Owner reserve the right to change any or all of these in the interest of the development. This printed material does not constitute an offer and / or contract of any type between the Developer / Owner and the recipient. Any purchaser/lessee of this development shall be governed by the terms & conditions of the Agreement For Sale/Lease entered into between parties, and no details mentioned in this printed material shall in any way govern such transactions. Tolerance of +/-2% is possible in the unit areas on account of design & construction variances.

**Corporate Office:** 1205, DLH Business Park, Opp - MTNL Office, S.V Road, Goregoan (W), Mumbai - 400062.  
**Sit Office:** S.No.- 105,106,156,178,179, Village - Rajawali, Bhoida Pada, Vasai - East, Phone - 0250 - 6095252.  
**Email -** rhil101@yahoo.com, **Web -** www.rhil101.com , www.reliablehomemakers.com/temp,+91 9823929219.