

LOCATION MAP



MAHARERA REGISTRATION NO.:
 PHASE-1 - P52000006318 | PHASE-2 - P52000022708
<https://maharera.mahaonline.gov.in>

DESIGN ARCHITECT | RCC CONSULTANT | INTERIOR CONSULTANT | LANDSCAPE ARCHITECT | MEP CONSULTANT
 Dimensions Arch. Pvt. Ltd. | Structural Concept Designs Pvt. Ltd. | Vini & Associates | Newarch Landscapes LLP | Anil Verma & Associates

ACTUAL RESIDENTIAL FLOOR READY FOR PREVIEW

Site Address: Sai World City, Palaspe Phata Junction, Panvel - 410 206.

Corporate Office: Paradise Lifespaces LLP, 1701, Satra Plaza, Plot No. 19 & 20, Sector - 19D, Vashi, Navi Mumbai.

Tel.: 022 2783 1000, 022 2783 9000 | Email: enquiry@paradisegroup.co.in

www.paradisegroup.co.in | www.saiworldcity.co.in | Follow us on:

Disclaimer: All the specification, design, facilities, dimensions, etc. are subject to the approval of the respective authorities & developers and would be changed if necessary. The discretion remains with the developers.



ARRIVE IN A WORLD OF GLOBAL LANDMARKS



thoughttrains



GLOBAL LIVING

A TRIBUTE FROM INDIA TO THE WORLD

Where quality of life is at its peak. Where serene green environs compliment the nature's beauty. Where leisure time becomes the best family time and lifestyle incarnates the cosmopolitan life with famous landmarks of the world surrounding you. An unparalleled living, where feeling of being alive is awesome, making every moment, a memory of a lifetime.

A host of enlivening entertainment from across the world. A paradise of supreme health facilities ensuring the complete well-being. Where fashion & glitterati is around every corner. And standard of living is at par with the world, ensuring best of grandeur, class, security, safety and conveniences.

Here is an incredible global offering from India to the world that is accumulating universal lifestyle embellishments at world's newest destination called Sai World City at Panvel. Presenting a living that creates a world within a world, a living that makes you truly global.

NEW YORK



PARIS



ROME



DUBAI



SINGAPORE



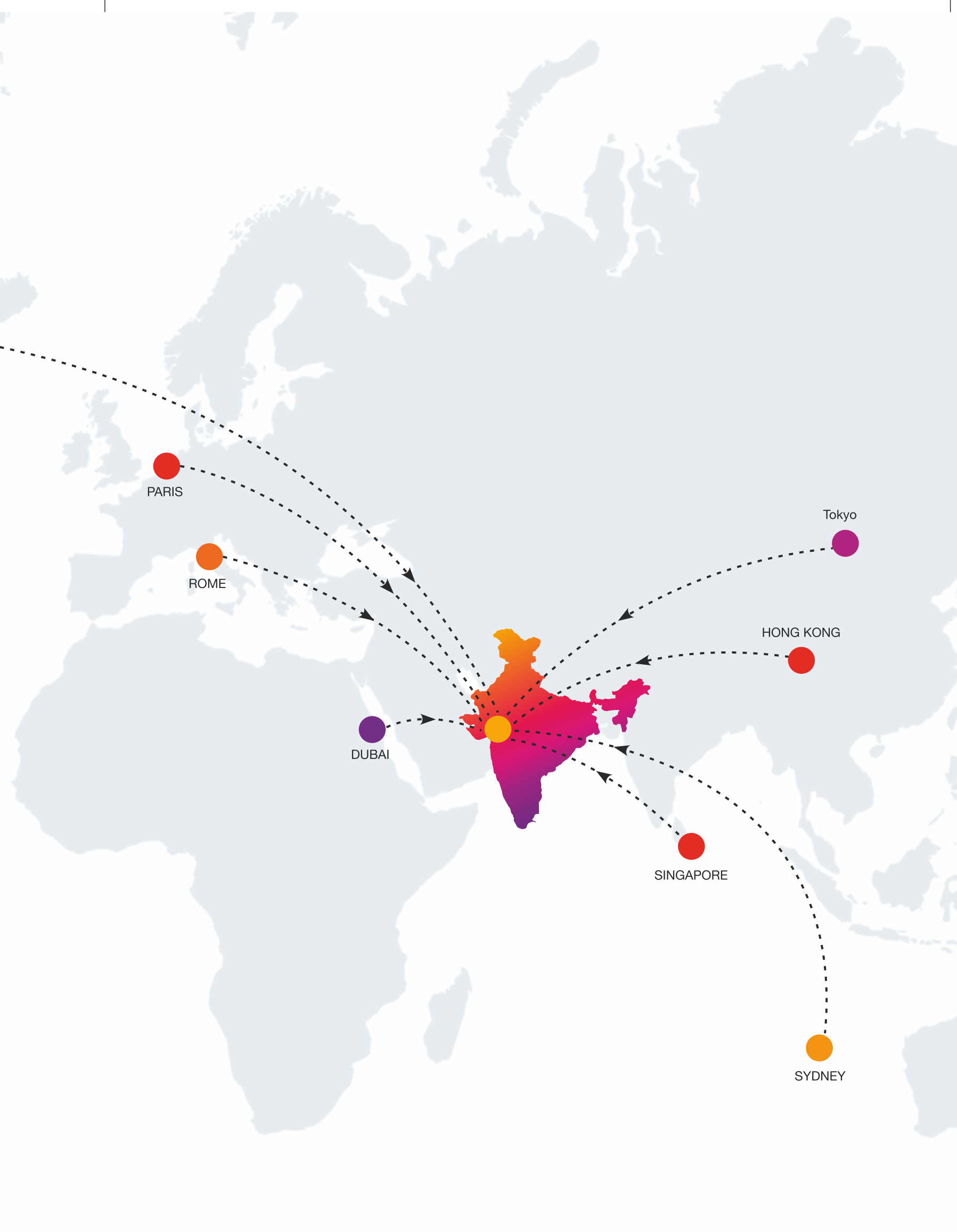
HONG KONG



SYDNEY



Tokyo





A CITY WITH EVERYTHING OUTSTANDING A WORLD WITH EVERYTHING WITHIN

GREEN ABUNDANCE

Multi-acred landscaped green parks & river promenades

LEISURE ESCAPE

Ever-refreshing colossal swimming pools, spas, relaxation zones

HEALTH'S HEAVEN

World-class health clinics, fitness centres, jogging tracks & much more

ENTERTAINMENT CENTRE

Most-entertaining DJ & Karaoke Room, Mini Theatre, Children's Gaming Arena, Virtual Gaming Lounge, Swimming Pool with Party Deck & Merlion Statue with Sunken Bar

SPORTS HUB

Energising sports activities including squash, lawn tennis, indoor games & more

LUXURY'S ABODE

Home of finest embellishments, well-designed spaces, exotic luxuries & technology

FASHION EPICENTRE

World-class shopping plaza, brand stores, fine-dine restaurants, cafés and fashion streets

BUSINESS PLATFORM

Advanced in-house business facilities like business centre, conference rooms, lounges and more

SECURED WORLD

High-tech security & surveillance with control room, car code scanners, biometric entry and CCTVs

A GLOBAL LIFESTYLE
THE SIGNATURE ADDRESS
OF AN INTEGRATED WORLD

PROJECT HALLMARKS



Mega Township



High-rise Towers



Cosmo-luxury Lifestyle



45,000 Sq.Ft. of Club Vegas



World-class Amenities



2, 2.5, 3 & 4 BHK Homes

PHASE 1
MARINA, OPERA, ACROPOLIS & MANHATTAN

PHASE 2
PALAZZO BELLAGIO BASILICA



— Club —
VEGAS



**GREEN
CITY**

A MAGNIFICENT
RESIDENTIAL TOWNSHIP
OF WORLD-CLASS LIFESTYLE

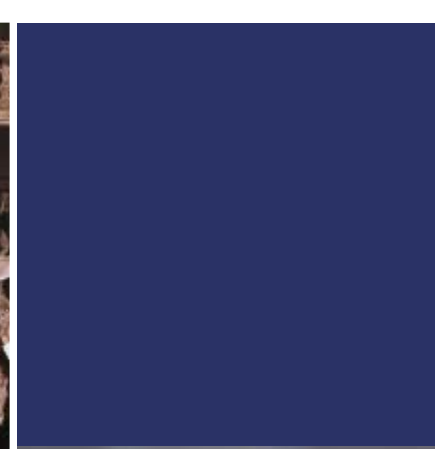
THEMED ENTERTAINMENT,
SPORTS AND FASHION
EMBELLISHMENTS
INSPIRED BY
THE FAMOUS CITIES
OF THE WORLD



**LUXURY
CITY**



**ENTERTAINMENT
CITY**



**FASHION
CITY**

MANY
CITIES

ONE
WORLD



**SPORTS
CITY**

MULTI-ACRED OPEN
GREEN SPACES
WITH 45,000 SQ. FT.
OF CLUB LIFE



Artist's Impression



**HEALTH
CITY**



**SECURE
CITY**

LARGEST INTEGRATED
RESIDENTIAL TOWNSHIP
OF PANVEL WITH WORLD-CITIES
INSPIRED BUSINESS,
SECURITY & SAFETY FEATURES



**BUSINESS
CITY**



ENTER INTO A REALM OF GLOBAL LIFESTYLE EXCLUSIVELY CRAFTED FOR A LUXURIOUS THEMED LIVING



Artist's Impression

DESIGNER COURTYARD



Artist's Impression

SWIMMING POOL WITH PARTY DECK



Artist's Impression

MEDITATION AREA



Artist's Impression

ROOFTOP CAFÉ



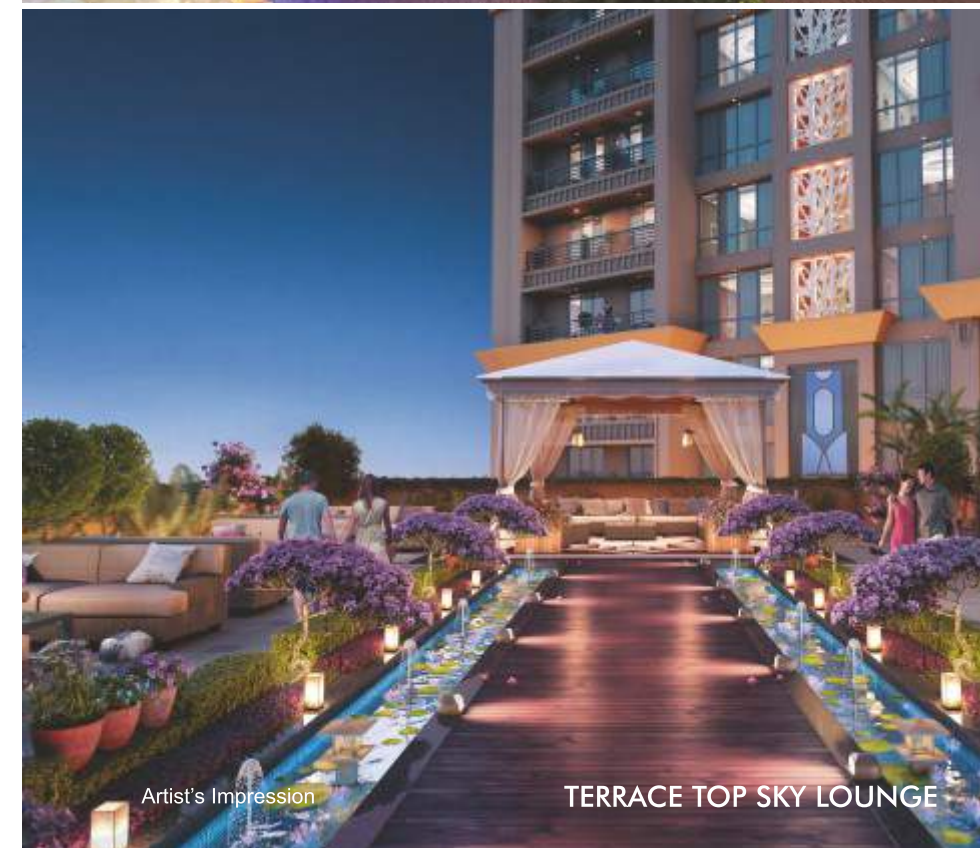
Artist's Impression

PERFORMANCE STAGE



Artist's Impression

PALM COURT WITH SIT-OUTS



Artist's Impression

TERRACE TOP SKY LOUNGE



Artist's Impression

KIDS PLAY ZONE



Artist's Impression

CYCLING & JOGGING TRACK



Artist's Impression

EXTRAVAGANT PARTY LAWN ATTACHED TO BANQUET HALL



MULTI-ACRED OPEN GREEN SPACES WITH MESMERISING WATER BODIES, GARDENS & PARKS

Artist's Impression



WATER SLIDES & CHILDREN'S PLAY AREA WITH PLAY EQUIPMENT

Artist's Impression

RENDERCAD



Artist's Impression

Club VEGAS

LUXURIOUS, G+5 STORIED CLUBHOUSE

- THEMED SCULPTURES LIKE STATUE OF LIBERTY, BIG BEN CLOCK TOWER, EIFFEL TOWER & MERLION
- EXTRAVAGANT PARTY LAWN ATTACHED TO BANQUET AREA
- MERLION SKY DECK WITH SWIMMING POOL
- LAVISH BANQUET HALL
- SAI BABA MANDIR



WORLD'S NEW LIFESTYLE
AVENUE FEATURING A HOST
OF UNPARALLELED AMENITIES



Artist's Impression

MERLION SKY DECK WITH SWIMMING POOL



PEACEFUL SAI BABA TEMPLE WITH MUSICAL FOUNTAIN



MAGNIFICENT BANQUET HALL

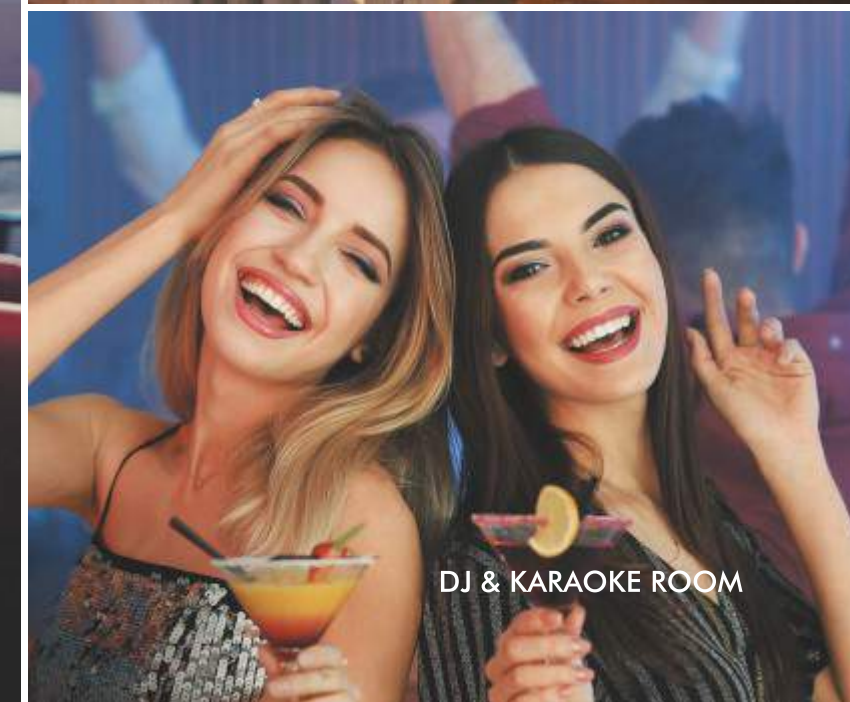
Artist's Impression



MINI THEATRE



PRE FUNCTION PARTY AREA



DJ & KARAOKE ROOM



FULLY EQUIPPED
AIR-CON GYMNASIUM WITH TRAINERS



SPA WITH
MESSAGE ROOMS



INDOOR GAMES ARCADE



CHILDREN'S CRECHE



WELL-STOCKED LIBRARY



FOOD COURT & CAFÉ



MUSIC AND DANCE STUDIO

FEEL THE PRIDE OF
YOUR ARRIVAL EVERY DAY

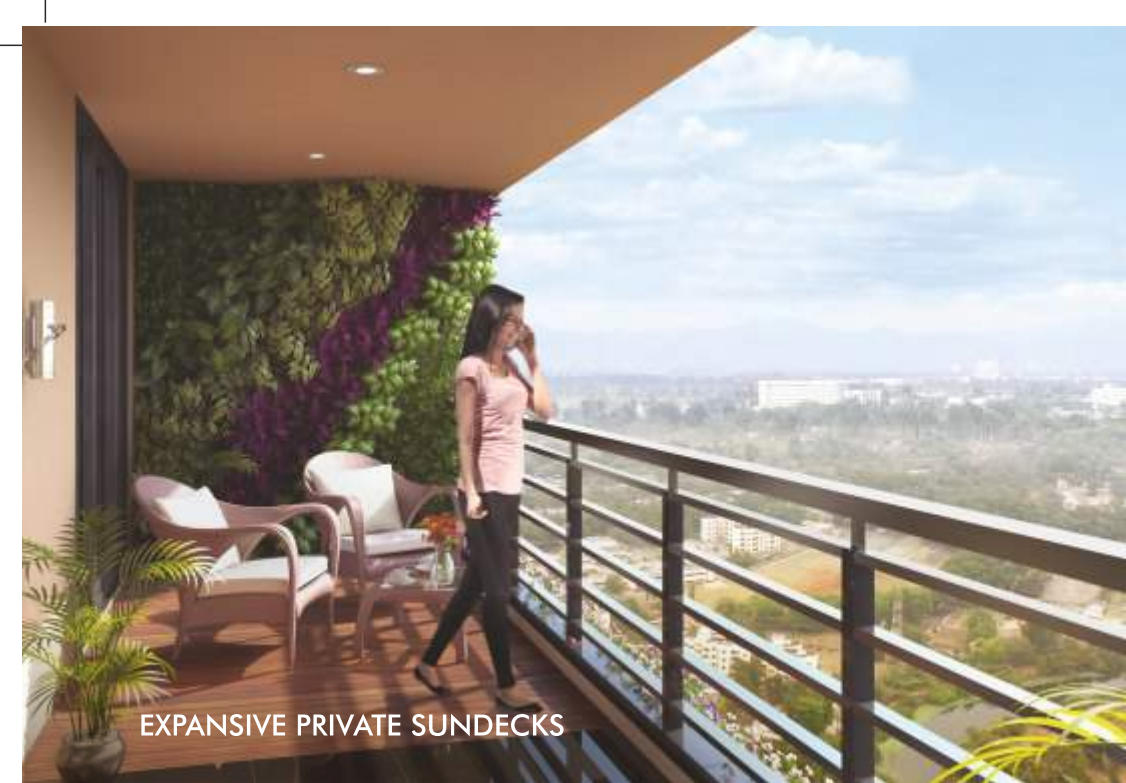
SAI WORLD CITY

THE GRAND ENTRANCE WITH DESIGNER FOUNTAINS AND SCULPTURES

Artist's Impression

DOUBLE-HEIGHT DESIGNER LOBBY

Artist's Impression



EXPANSIVE PRIVATE SUNDECKS



DESIGNER BEDROOM



LAVISH LIVING ROOM



DESIGNER BATHROOM WITH BRANDED SANITARY WARE & FIXTURES



24X7 SECURITY PERSONNEL



SURVEILLANCE CAMERAS



INTERCOM & VIDEO DOOR PHONE

TYPICAL FLOOR PLAN (PHASE 1) - MARINA



TYPICAL FLOOR PLAN (PHASE 1) - OPERA



TYPICAL FLOOR PLAN (PHASE 1) - ACROPOLIS



TYPICAL FLOOR PLAN (PHASE 1) - MANHATTAN



TYPICAL FLOOR PLAN (PHASE 2) - PALAZZO

3RD TO 6TH, 8TH TO 11TH, 13TH TO 16TH, 18TH TO 21ST, 23RD TO 26TH, 28TH TO 30TH



TYPICAL FLOOR PLAN (PHASE 2) - PALAZZO

7TH, 12TH, 17TH, 22ND & 27TH



TYPICAL FLOOR PLAN (PHASE 2) - BELLAGIO

3RD TO 6TH, 8TH TO 11TH, 13TH TO 16TH, 18TH TO 21ST, 23RD TO 26TH, 28TH TO 30TH



TYPICAL FLOOR PLAN (PHASE 2) - BELLAGIO

7TH, 12TH, 17TH, 22ND & 27TH



TYPICAL FLOOR PLAN (PHASE 2) - BASILICA

3RD TO 6TH, 8TH TO 11TH, 13TH TO 16TH, 18TH TO 21ST, 23RD TO 26TH, 28TH TO 30TH



TYPICAL FLOOR PLAN (PHASE 2) - BASILICA

7TH, 12TH, 17TH, 22ND & 27TH



PARADISE GROUP

PERFECT PAST, PRESTIGIOUS PRESENT, PROGRESSIVE FUTURE



It's been a long yet fruitful journey for Paradise Group. We began more than three decades ago with a clear aim of providing lavish and appealing spaces for all to dwell. We have come a long way after constructing more than 100 successful projects across Navi Mumbai as of today's date. This rendezvous of more than 30 years has made us a team of highly experienced construction experts. Keeping abreast with the latest technology and implementation of world-class techniques are the reasons why our structures are not just luxuriously designed marvels, but also perfect specimens of 'beauty with quality'.

With structures that are a beautiful mix of high-end luxuries and modern amenities and pose an elegant touch of culture, we have attempted to make this world a better place to live in. Our past has been glorious and made us proud in constructing 5 Million Sq. Ft. of land area that gave our customers best places to live an enhanced life. At present we are developing over 12.5 Million Sq. Ft. of land area across prime locations of Navi Mumbai and Mumbai like Kharghar, Panvel, Taloja, Ulwe, Dronagiri, Dombivali, Kalyan and Lonavala providing highly innovative, state-of-the-art construction for the classes as well as the masses. With an extremely progressive attitude, today we are forging ahead towards a bright future with a massive land bank of another 12.5 Million Sq. Ft. of through which we are committed to bring in a big change in present housing concepts. We are sure that our sincere efforts towards making this world a 'Paradise' will definitely become a pleasant reality in the near future.

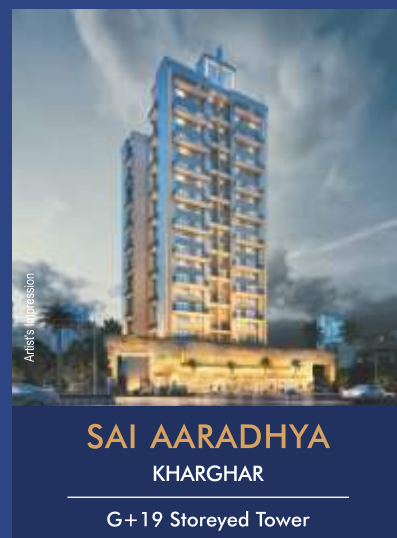
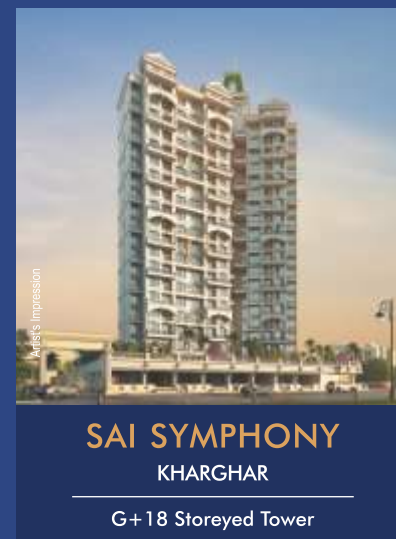
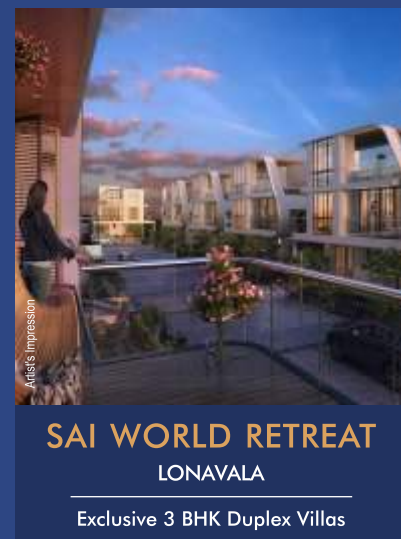
COMPLETED PROJECTS

LIFESTYLES THAT STAND AS ELOQUENT TESTIMONIALS TO PERFECTION

 <p>ACTUAL PHOTOGRAPH</p> <p>SAI SPRING KHARGHAR</p> <p>G+29 Storeyed Tower</p>	 <p>ACTUAL PHOTOGRAPH</p> <p>SAI CRYSTALS KHARGHAR</p> <p>G+30 Storeyed Tower with 2 Wings</p>	 <p>ACTUAL PHOTOGRAPH</p> <p>SAI SOLITAIRE KHARGHAR</p> <p>G+30 Storeyed Tower</p>	 <p>ACTUAL PHOTOGRAPH</p> <p>SAI WONDER KHARGHAR</p> <p>G+18 Storeyed Tower</p>	 <p>ACTUAL PHOTOGRAPH</p> <p>SAI MOKSH KHARGHAR</p> <p>G+22 Storeyed Tower</p>	 <p>ACTUAL PHOTOGRAPH</p> <p>SAI MIRACLE KHARGHAR</p> <p>G+30 Storeyed Tower with 2 Wings</p>
 <p>Artist's Impression</p> <p>SAI FORTUNE ULWE</p> <p>G+13 Storeyed Tower</p>	 <p>Artist's Impression</p> <p>SAI SAHIL ULWE</p> <p>G+12 Storeyed Tower</p>	 <p>Artist's Impression</p> <p>SAI GANGA ULWE</p> <p>G+13 Storeyed Tower</p>	 <p>Artist's Impression</p> <p>SAI JEWEL KHARGHAR</p> <p>G+18 Storeyed Tower</p>	 <p>Artist's Impression</p> <p>SAI SAPPHIRE ULWE</p> <p>G+7 Storeyed 2 Towers with four wings</p>	
 <p>ACTUAL PHOTOGRAPH</p> <p>SAI MANNAT KHARGHAR</p> <p>G+26 Storeyed Tower</p>			 <p>Artist's Impression</p> <p>SAI HARMONY ULWE</p> <p>G+7 Storeyed Tower with 4 Wings</p>	 <p>Artist's Impression</p> <p>SAI PEARLS KHARGHAR</p> <p>G+15 Storeyed 2 Towers</p>	



ONGOING PROJECT LANDMARKS POISED TO BECOME BENCHMARKS



PANVEL – A WORLD OF PRIVILEGES, A CITY OF FUTURE

Advantageous Infrastructure Developments
Around Mega City Panvel



Navi Mumbai International Airport (NMIA)
The largest "GREENFIELD", state-of-the-art International Airport
sprawled over 2200 hectares



Mumbai Trans-Harbour Link
India's Longest Sea Bridge (21.8 Kms), connecting Mumbai, Navi
Mumbai & NMIA from Sewri to Nhava Sheva



Virar-Alibaug Multimodal Corridor (VAMC)
8 lane mega corridor planned in two phases, Phase 1 connecting
Virar to Panvel (90 KM), and Phase 2 from Panvel to Alibaug (50 KM)



Panvel-Karjat Suburban Railway Route
Connecting Karjat and Panvel to ensure easy access across Mumbai,
Nashik, Lonavala



CST- Panvel Fast Line Elevated Corridor
Ensuring ease of travel time of Panvel & CST and offer an elevated
fast railway service with air-conditioned coaches



New Coastal Road
6 lane rapid transit corridor will excellently connect Kharghar with
Navi Mumbai International Airport



Navi Mumbai Special Economic Zone (NMSEZ) & MIDC
Enhancing the business with ease of transportation while creating
numerous job opportunities for all



Mumbai-Pune Expressway
6 lane expressway spanning across 94.5 KMS, ensures best
connectivity and easy reach to Pune



Proposed 16 Platform Panvel Railway Terminus
Not only will ensure ease of travelling outside Navi Mumbai but will
become major terminus of Mumbai



Jawaharlal Nehru Port Trust (JNPT)
Proximity to India's largest container port also known as Nhava Sheva
ensures better business opportunities within reach



Major Schools, Colleges, Hospitals & Malls in Vicinity
Prominent landmarks like DPS, DAV Public School, Amity University,
MGM College of Medical & Engineering, MGM Hospital, Lifeline
Hospital, Orion Mall, PVR Cinemas, Big Bazaar, D Mart in vicinity