



m o s t



pure passion

presenting

EPIHOME

wakad, pune | 2400\* sq.ft.  
(218.32\* sq.mt.)

\*area mentioned above is approximate saleable area



4 those with higher aspirations in life  
presenting epitome in all it's unique splendour.  
the only absolute 4bhk living in wakad.

# 4

towers of 15 storey each with just 2 apartments per floor that define a lifestyle that has room for more of what you desire. which means you now have the space to realise the things you've always aspired for, and dreamed about. the space to not only cultivate your calling but also soothe your body and soul. the space to make your life more meaningful.





# 4 seeing the aspirations in your dreams

your dreams will forever keep you on your toes. and to unwind and chase them with vigour calls for an evolved way of life. a life that has absolute balance and grace. a life that moves with a beautiful rhythm. imagine the endless possibilities you can explore with abundant space. imagine having a home with 4 bedrooms where you can have the liberty to pursue your passion with your very own in-house studio or mini-library or private den. that is the beauty of having a 4bhk home. you can embellish it however you want and experience your dreams turning into reality.

# 4

ever growth for 4ever happiness

the homes at epitome are gracefully designed for those who appreciate the value of having more. 2400\* sq.ft. (218.32\*sq.mt.) of pure indulgence. a sprawling living room, 4 bedrooms, 5 toilets, spacious deck... space has never meant so much!

\*area mentioned above is approximate saleable area





# 4 most features

those who seek more with poise, have an eye for finesse. which is why the attention to detailing is clean and classic in these 100% done-up homes. right from central v.r.v air conditioning by daikin to german kitchens equipped with hob, chimney, microwave and dishwasher. the grohe-fixtured bathrooms come with false ceiling from hunter douglas, villeroy & boch sanitary fittings and plumbing by viega. the entire apartment has false ceiling with austrian lighting, wooden flooring by parky, belgium and pure white carrara marble. complete convenience and safety is assured with 100% dg back up, latest locks from germany and pressurized staircases. with garbage chute and piped gas, no effort has been spared to offer high-quality detailing.





# 4 get the world for a while

step out and take your own sweet time off at the clubhouse. revive with a soothing dip in the swimming pool or pump in positivity at the fitness centre. epitome has been intelligently planned with a traffic-free and kids-friendly designer podium garden, sheer-granite designer entrance lobbies with lounge in each building. there are also 2 high-speed elevators and one separate elevator for service staff in each tower. there's also ample parking space with reserved spaces for visitors.

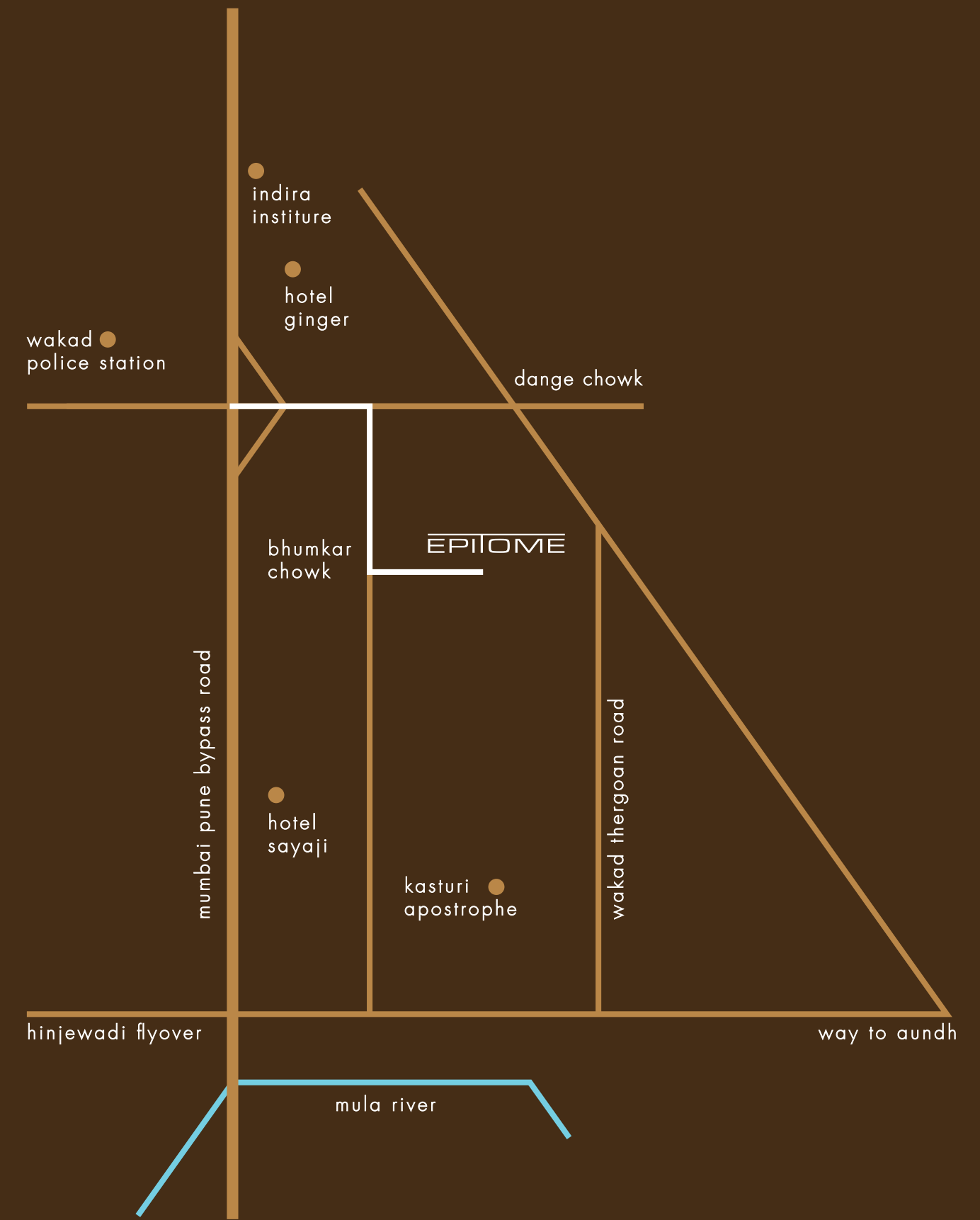




4 mulating a fine sense of balance and  
an ethereal touch of grace

# 4 there's nothing bigger in wakad

epitome is located right in the heart of wakad. it enjoys close proximity to hinjewadi which is home to various i.t. companies. greater connectivity is also ensured with easy access to pune-mumbai expressway. wakad has everything. great eating places, world-class shopping and contemporary work environments are all within very easy reach. and now it has the 4most with epitome. for those passionate about the good life.



sayaji hotel - 1.8 km | aditya birla hospital - 2.5 km  
big cinemas - 6 km | mercedes benz international school - 7.5 km



4 the love of evolved living

# 4 seeing absolute sensitivity

once you live in the absolute luxury of epitome, it is also important to maintain the stupendous standards that you will get used to. and hence, provisions have already been made for all air-conditioning ducting, wiring, plumbing etc. flooring in all areas including decks has also been already provided. there is a code of conduct laid down, based on sensitivity towards our neighbours, wherein residents are expected to respect existing arrangements. shifting of walls, or erecting of new walls within apartments is also a strict no-no. all of this will ensure we honour each others' space, as well as maintain the thoughtful artistry of epitome.







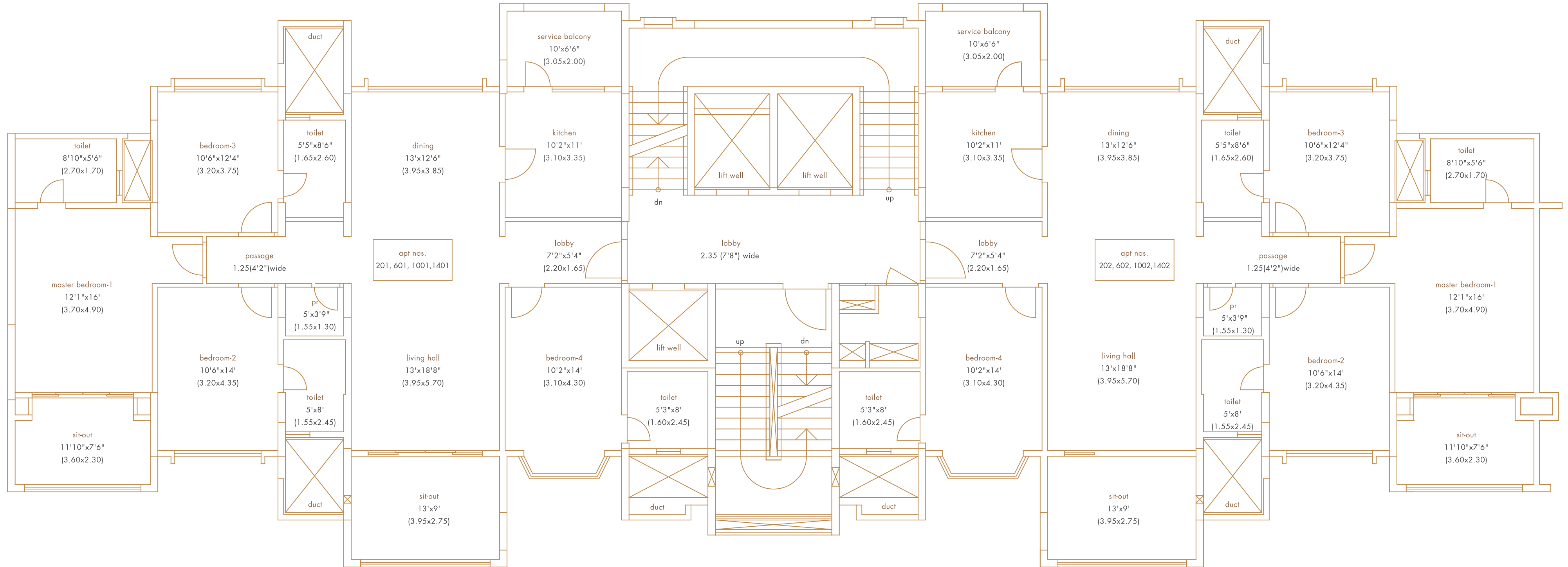
C

B

A

D

proposed  
development



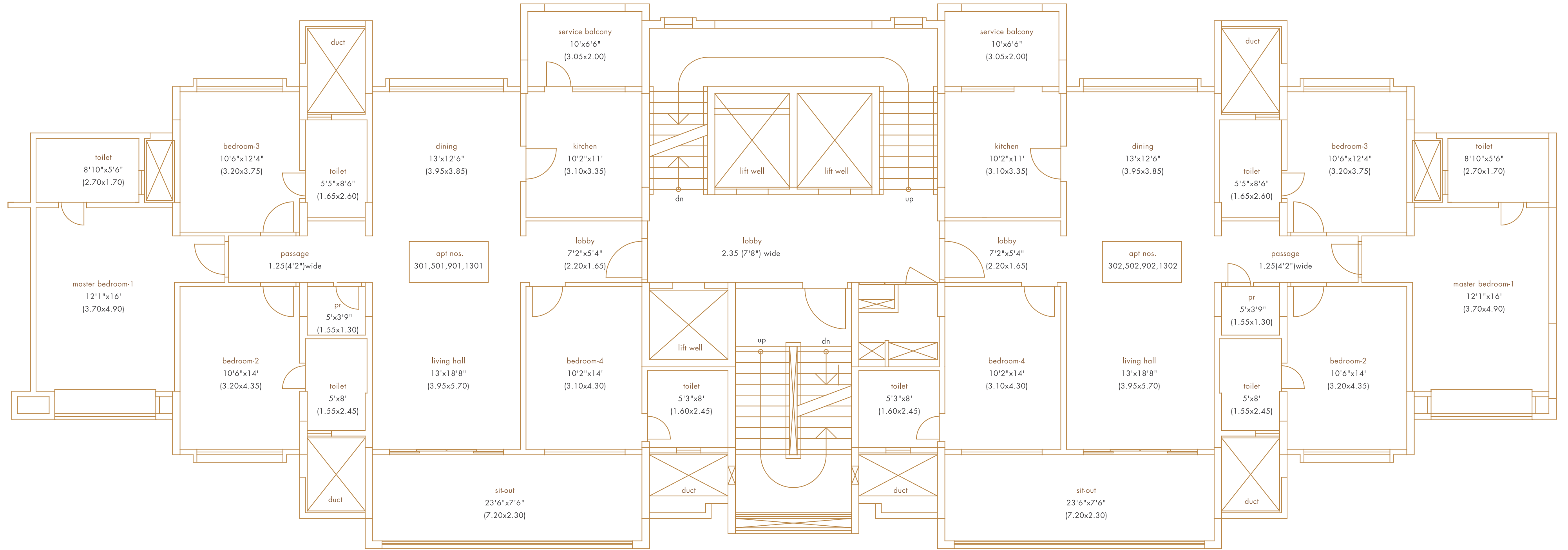
\*carpet area-1775 sq.ft. (165.89 sq.mt.)

\*area mentioned above is approximate carpet area





floor layout for level 2, 6, 10 & 14

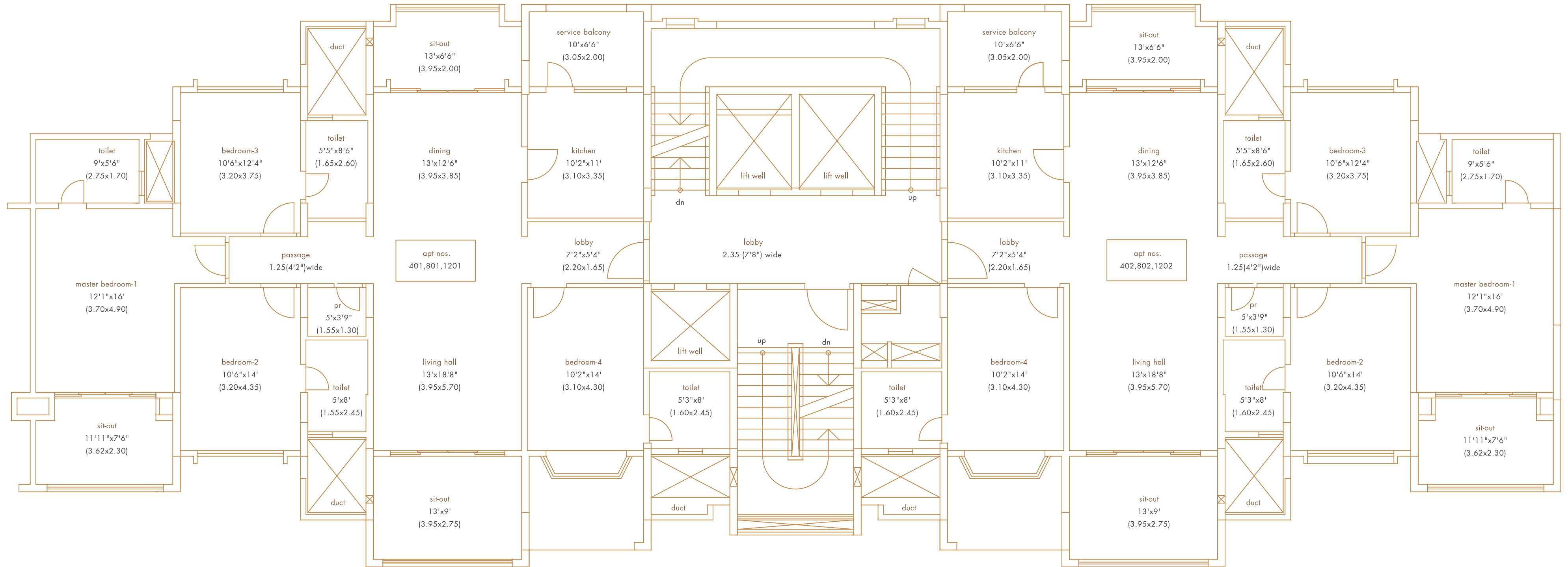


\*carpet area-1752 sq.ft. (162.84 sq.mt.)

\*area mentioned above is approximate carpet area



floor layout for level 3, 5, 9 & 13



\*carpet area-1859 sq.ft. (172.74 sq.mt.)

\*area mentioned above is approximate carpet area



floor layout for level 4, 8 & 12

4 fortunate enough to create homes for the passionate

we are kasturi, pune's niche luxury real estate brand.

the fine homes we design are infused with absolute passion and rare flamboyance. they also come emblazoned with the world's most envious brands. our passion lives and breathes in over 1100 homes that we have delivered across pune. we also offer fine 2, 3 and 4bhk homes across western pune at baner, wakad, hinjewadi and moshi.



pure passion



**site address**

epitome, survey no.129, wakad, pune 411 057,  
maharashtra, india  
m + 91 88060 54054

**corporate office**

1 adams court, 2nd floor, opp. hotel mahabaleshwar,  
baner road, pune 411 045, india  
t + 91 20 4077 9900, sales@kasturi.com

**mumbai office**

m + 91 95457 53300, m + 91 95450 16888

[www.kasturi.com](http://www.kasturi.com)