

**ANSAL API**

Building lifestyles since 1967

**SUSHANT**  
**GOLF CITY**  
HI-TECH TOWNSHIP, LUCKNOW

# *Celebrity* **GREENS**

**PREMIUM RESIDENTIAL APARTMENTS AND PENTHOUSES**



Building lifestyles since 1967

Ansal API, a success story that started way back in 1967. Built on a commitment to radically improve the lifestyle of our fellow countrymen, we constantly strive to surpass even our own lofty standards. Our townships, commercial centres, retail spreads stand as testimony to this very commitment.



Your Home In One Of

# The Most Celebrated Township

Welcome to Sushant Golf City, Lucknow. A Hi-Tech residential township sprawling across 2,000 acres extendable upto 5,000 acres (approx.). A world-class International Championship Golf Course surrounds residential and commercial areas, making life on the greens a reality. Luxury villas, designer landscaping, state-of-the-art infrastructure, excellent entertainment and healthcare facilities, lush greens... everything here is specially designed to excel even under the most discerning eye.



**SUSHANT**  
**GOLF CITY**  
HI-TECH TOWNSHIP, LUCKNOW

# Celebrity Greens

Your ideal gateway



An artistic impression of Celebrity Greens - Night View

# Unmatched & Unparalleled



Celebrity Greens is a super luxurious group housing with 2/3/4 bedrooms apartments and penthouses. Unmatched and unparalleled in sheer class and luxury with seamlessly woven natural vegetation, roadways, topography, water bodies and other top-notch facilities. With all the worldly conveniences close by such as an 18 hole international golf course, world-class shopping mall, a Medicity with super speciality hospital, a tennis academy, schools, post office and commercial centre - just to name a few.

Actual Picture of Apartment.



## Classy interiors

- Spacious living room & bedrooms
- Private balconies
- Modern kitchen
- Branded fitments
- Modern interiors
- Power backup for essential services
- Security with video phone
- Water purifier in the kitchen



## Rich facilities

A Club House with

- Ultra-modern gym
- Swimming pool
- Multi-cuisine restaurants





## Lifestyle amenities

- Community Centre etc.
- Commercial Complex
- Post Office / Bank / ATM



## A fine mix of conveniences

- The Royal Palms Golf Country Club
- Lifestyle shopping mall, spread over 8,50,000sq.ft. (approx.)
- 18 Hole International Golf Course landscaped by Dr. Martin Hawtree, U.K.
- Mahesh Bhupathi Tennis Academy
- Biotech Park & IT Park
- Medicity with super speciality hospital



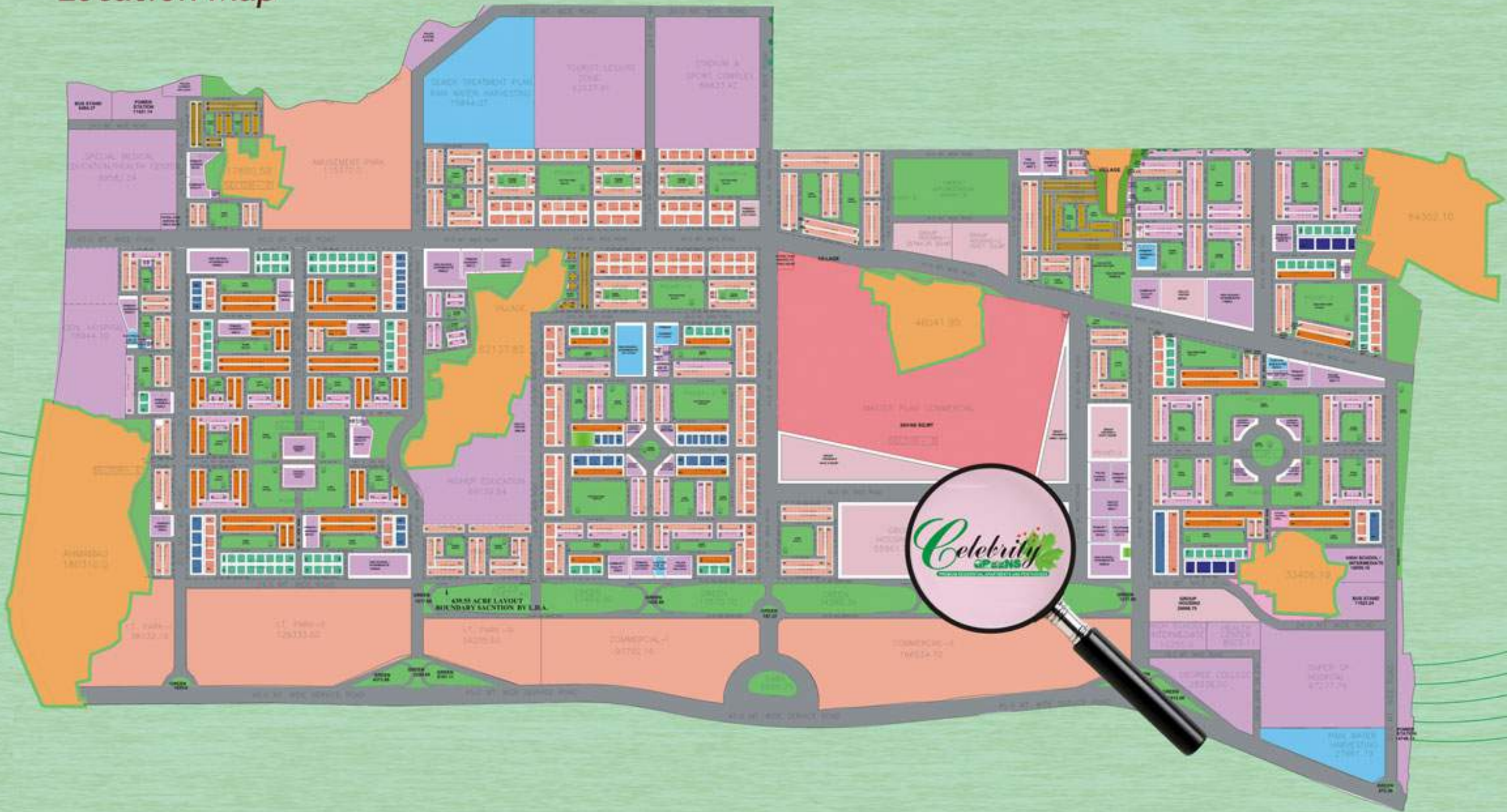
# LOCATION MAP

## ADVANTAGE LOCATION





# Location Map



Disclaimer: All details/specifications/impressions are indicative based on available information and are subject to change.



# *Celebrity* **GREENS**

**PREMIUM RESIDENTIAL APARTMENTS AND PENTHOUSES**

**SUSHANT GOLF CITY- LUCKNOW**

## Floor Plans



An artistic impression of Celebrity Greens - Day View



45M WIDE ROAD

45 M WIDE ROAD

45 M WIDE ROAD

ENTRY EXIT

**TYPE - 3**  
**AREA 1295Sqft.**

**TYPE - 4**  
**AREA 1325Sqft.**



**TYPE - 2**  
**AREA 2015Sqft.**

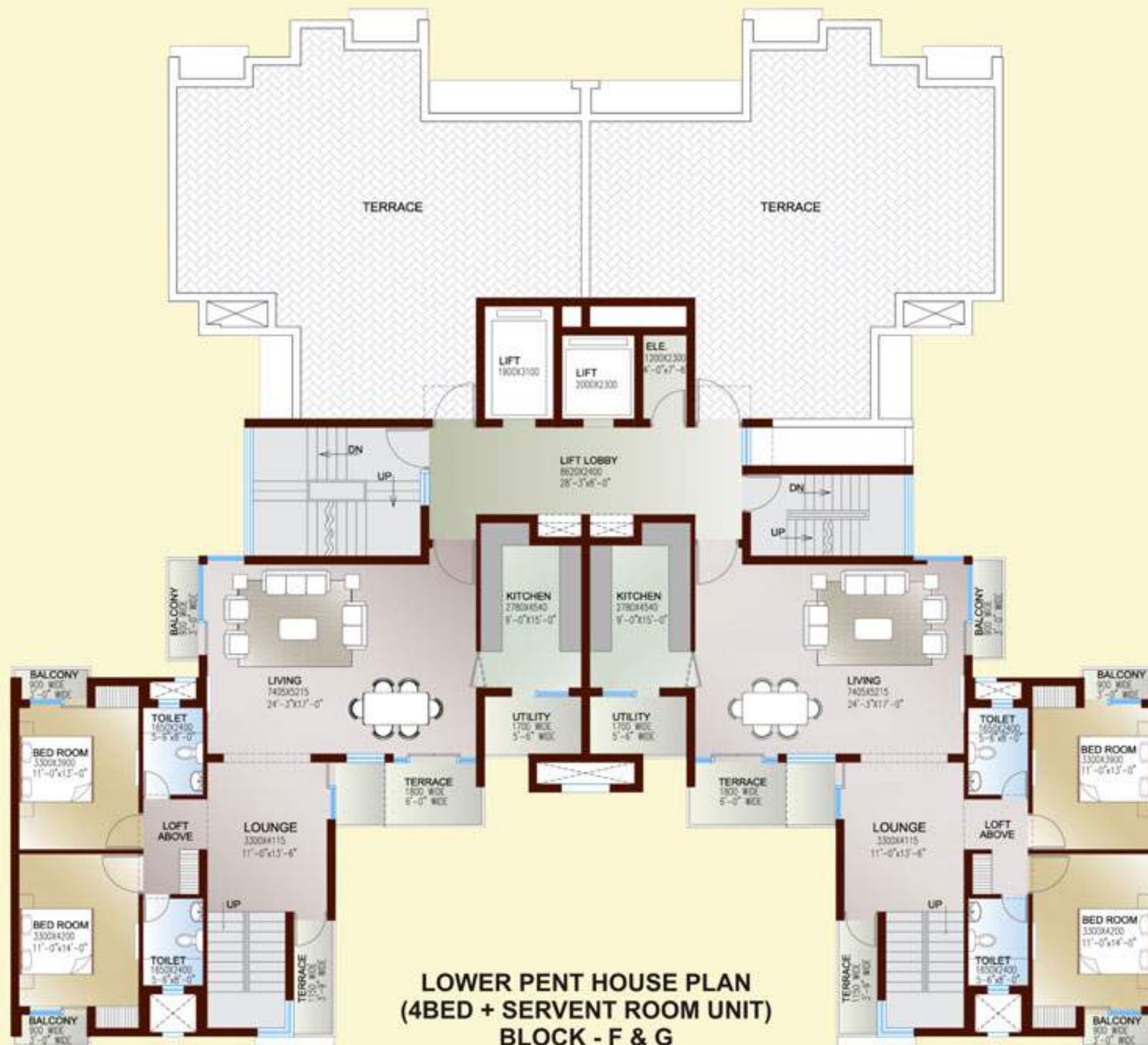
**TYPE - 1**  
**AREA 2015Sqft.**

**TYPICAL FLOOR PLAN**  
**(3BED + STUDY & 2BEDROOM UNIT)**  
**BLOCK - F & G**





UPPER PENT HOUSE PLAN  
 (4BED + SERVENT ROOM UNIT)  
 BLOCK - F & G



PH - 2  
AREA 3845Sqft.

**LOWER PENT HOUSE PLAN  
(4BED + SERVENT ROOM UNIT)  
BLOCK - F & G**

PH - 1  
AREA 3845Sqft.

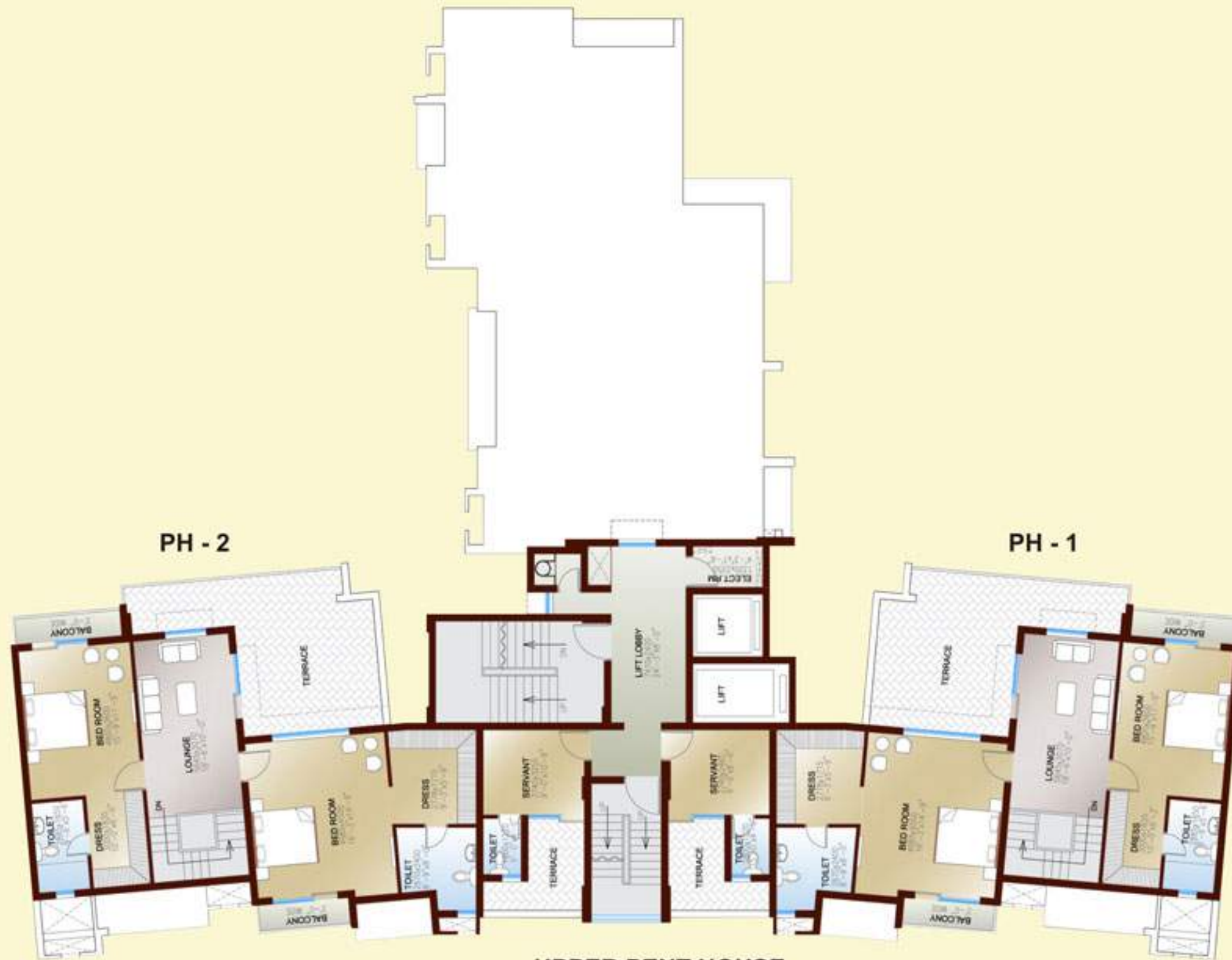


**TYPE - 1  
AREA 2175 Sqft.**

**TYPE - 3  
AREA 2100 Sqft.**

**TYPE - 1  
AREA 2175 Sqft.**

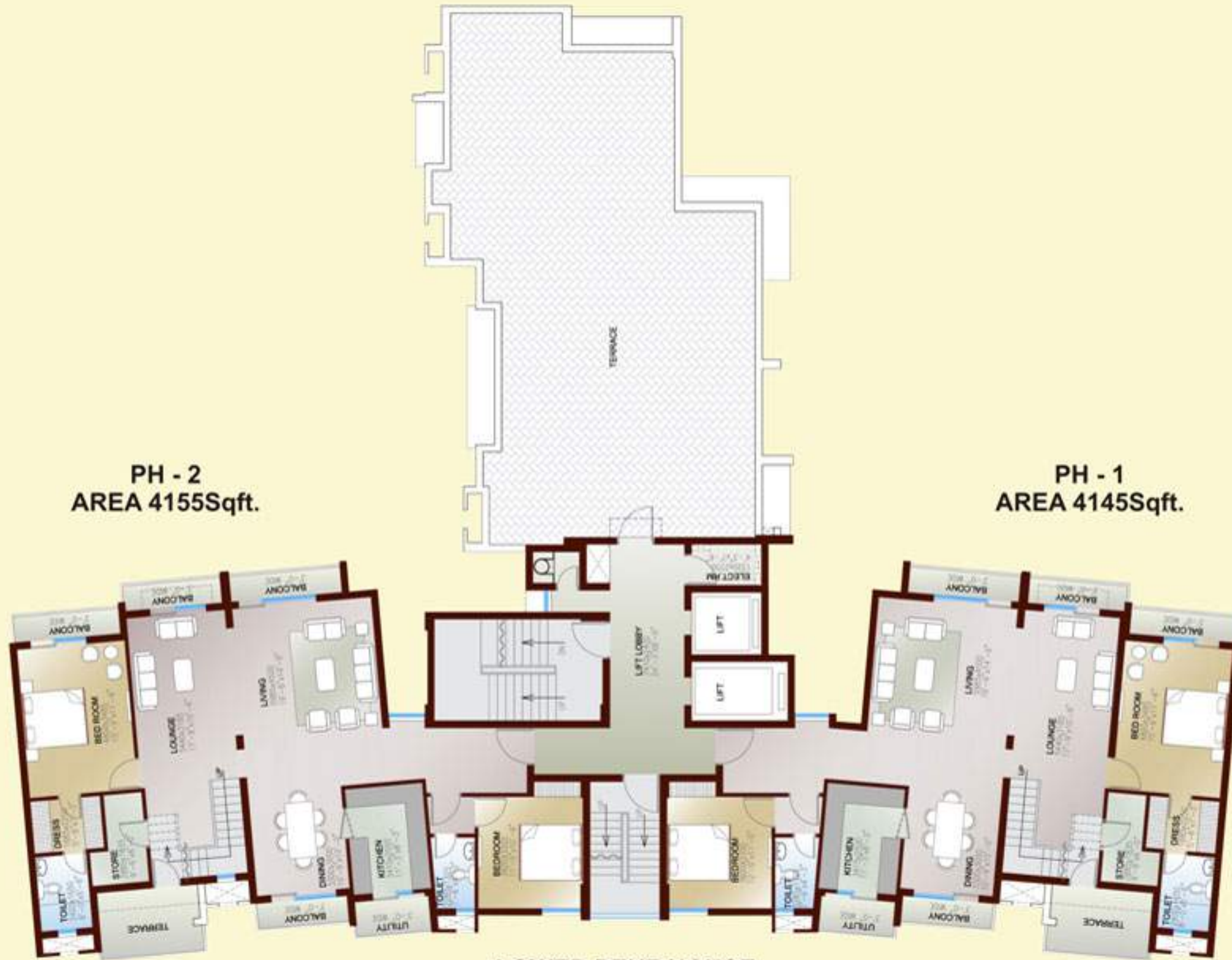
**TYPICAL FLOOR PLAN  
( 4BED ROOM UNIT)  
BLOCK- L&M**



**UPPER PENT HOUSE  
(4BED ROOM + SER. UNIT)  
BLOCK - L & M**

PH - 2  
AREA 4155Sqft.

PH - 1  
AREA 4145Sqft.



LOWER PENT HOUSE  
(4BED ROOM + SER. UNIT)  
BLOCK - L & M

# SPECIFICATIONS

<b>STRUCTURE</b>	Framed Structure confirming to BIS seismic codes with block masonry filler walls
<b>FLOOR FINISHES</b>	
<i>Living/ Dinning</i>	Vitrified tiles / Marble floor
<i>Bedrooms</i>	Laminated wooden flooring / Ceramic tiles
<i>Stairs</i>	Stone flooring on treads
<i>Balconies</i>	Non - skid ceramic tiles
<b>TOILETS</b>	
<i>Flooring</i>	Non - skid ceramic tiles/ Porcelain tiles
<i>Walls</i>	Tiles as per architectural design
<i>Chinaware</i>	European type WC, wash hand basin Single lever CP fittings
<i>Counter</i>	Marble / Granite counter
<i>Water Supply</i>	Provision for hot and cold water supply
<i>Other Fixtures</i>	Looking mirror, Towel ring/rod, Paper holder, Soap dish and Health faucet Glass partition in bathing area of master bedroom toilet
<b>KITCHEN</b>	
<i>Flooring</i>	Non - skid ceramic tiles or equivalent
<i>Dado</i>	Ceramic Tiles cladding on walls as per architectural design
<i>Counter</i>	Granite
<i>Cabinets</i>	Modular kitchen cabinets with chimney and hob
<i>Water Supply</i>	Provision for hot and cold water supply
<i>Fittings</i>	Single lever CP fittings with mixers
<i>Sink</i>	Stainless sink with drain board
<b>JOINERY</b>	
<i>Windows</i>	UPVC / Anodised aluminium with float glass
<i>Doors</i>	Machine made moulded door shutter with S.S. fittings Main entrance door shall be a security door
<i>Internal</i>	Drawing and dinning rooms/ bedrooms walls shall be finished with plastic emulsion paint as per design
<i>External</i>	Pleasing elevation with semi - permanent finish / All weather exterior paints
<b>OTHER FEATURES</b>	
<i>Electrical</i>	Copper wiring in conduits with modular switches
<i>Telecommunication</i>	Provision of telephone points in drawing room, dinning room and all bedrooms Provision of TV aerial points in drawing room/ lobby and all bedrooms
<b>OTHERS</b>	Videophone at main entrance door • 25 ltr. capacity geysers in all bathrooms • 15 ltr. capacity geyser in kitchen • Exhaust fans in all bathrooms shall be provided • Water purifier with 10 ltr/hr. capacity in kitchen



An artistic impression of Celebrity Greens - Day View



#### DELHI CORPORATE OFFICE

115, Ansal Bhawan, 16 Kasturba Gandhi Marg, New Delhi 110001,  
Tel: 011-23353550, 23352268/69/70, Fax: 66302273,  
E-mail: [pduitta@ansalapi.com](mailto:pduitta@ansalapi.com), Website: [www.ansalapi.com](http://www.ansalapi.com)  
Lucknow: YMCA Campus, 13, Rana Pratap Marg, Lucknow- 226001.  
Ph: 0522 - 4096200

Agra: Block No. 50/1.5, Shop No. G1 & M1, Anupam Plaza-1, Sanjay Place,  
Agra-282002. Ph: 0562 - 2522112, 4008716. Fax: 0562- 2522110  
Meerut: F-130, 131 & 132, Abu Plaza, Abu Lane, Meerut-250001.  
Ph: 0121- 2641264, 2641265. Fax: 0121-2641266  
Aquapolis: NH-24, Ghaziabad, Doondahera.

#### REGIONAL OFFICES

Delhi & NCR: Faridabad, Gurgaon, Delhi, Greater Noida, Ghaziabad  
Haryana: Karnal, Kurukshetra, Panipat, Sonapat  
Punjab: Amritsar, Bhatinda, Jalandhar, Ludhiana, Mohali, Chandigarh  
Rajasthan: Ajmer, Bhilwara, Jaipur, Jodhpur, Bikaner  
Uttar Pradesh: Agra, Lucknow, Meerut

#### OVERSEAS REPRESENTATIVES

**USA: Chicago- Savita Leekha:** 21<sup>st</sup> Century Universal Real Estate 7300 N  
Western Ave Chicago IL 60645, Mob.: (847) 477-7106, [Savita.leekha@yahoo.com](mailto:Savita.leekha@yahoo.com)  
**Santa Clara- Ashok Goyal:** NRI Houses, 2900 Gordon Ave., Suite 100, Santa Clara,  
CA 95051, Mob. (408) 470-8325, [nrihouses@gmail.com](mailto:nrihouses@gmail.com)  
**Los Angeles-Rajan Singh:** Everest Investments, 26500 W. Agoura Road  
#102-342, Calabasas, CA 91302, Mob: 818-451 5364, [rajcausa@aol.com](mailto:rajcausa@aol.com)  
**CANADA: Toronto-Yogesh Sharma:** B V International, 2460 Anson Drive Unit-16,  
Mississauga Ontario L5S 1G7, Mob: (416) 880-0987, [bv.intl@hotmail.com](mailto:bv.intl@hotmail.com)  
**UAE: Dubai-Ankur Seth:** City Light Real Estate Broker, Hamrain Centre, Gate No. 7,  
Third Floor, Deira, DUBAI, UAE. Mob: 050-6399922, [ankur@ansalapi.com](mailto:ankur@ansalapi.com)  
**UK: London-Mr. Meraj:** Axiom Estates, 4<sup>th</sup> Floor, 109 Baker Street,  
London W1U6RP, 0845 355 1188, [meraj@axiomestates.com](mailto:meraj@axiomestates.com)  
**AUSTRALIA: Sydney-Vishal Gupta:** Concept Tree Australia, 61-425335795,  
[vishal.praghal@gmail.com](mailto:vishal.praghal@gmail.com)



For details  
SMS 'API' to  
**54545**