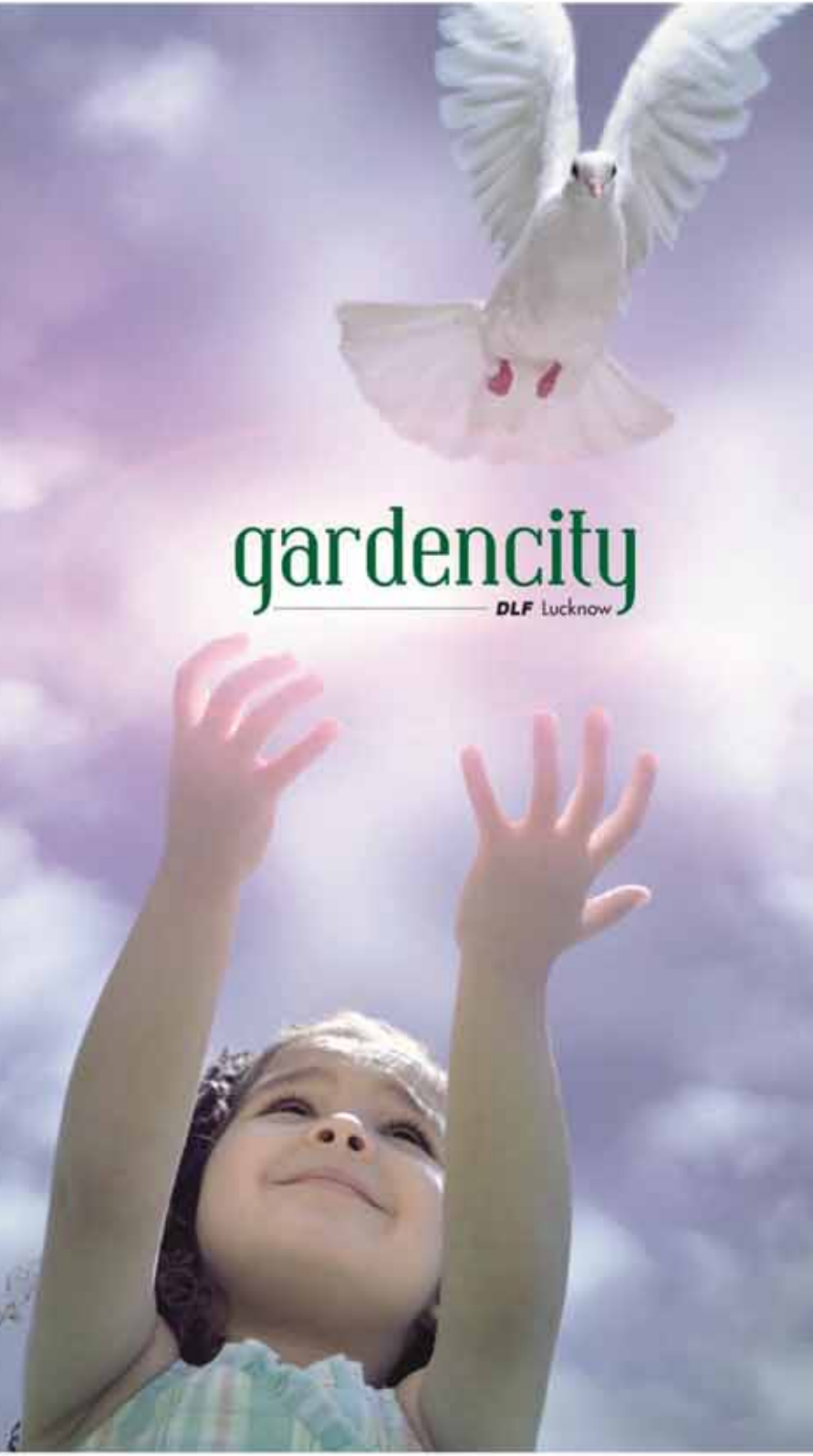




# gardencity

DLF Lucknow



Site Office: NH-24B, Rai Bareilly Road, Village - Parseni, Tehsil - Mohanlalganj, Lucknow - 227305  
Lucknow (City Office): B-85, Sector-C, Mahanagar, Lucknow - 226006; Landline No.: 0522-4050500, 4050526, 4050501  
Gurgaon Office: 2nd Floor, Gateway Tower, DLF Phase-III, Gurgaon - 122002 | Ph.: +91-124-4317094  
Toll Free: 1800 103 3534 | Website: [www.dlfindia.in](http://www.dlfindia.in) | E-mail: [homes@dlf.in](mailto:homes@dlf.in)



# Building Excellence

DLF, one of the major real estate companies in India with operations in 31 cities, has developed numerous projects all over the country. With over 6 decades of trust and experience, DLF provides world-class projects that are immaculately designed offering a modern lifestyle.



DLF Valley, Panchkula

Samatara, Shimla

Commander's Court, Chennai

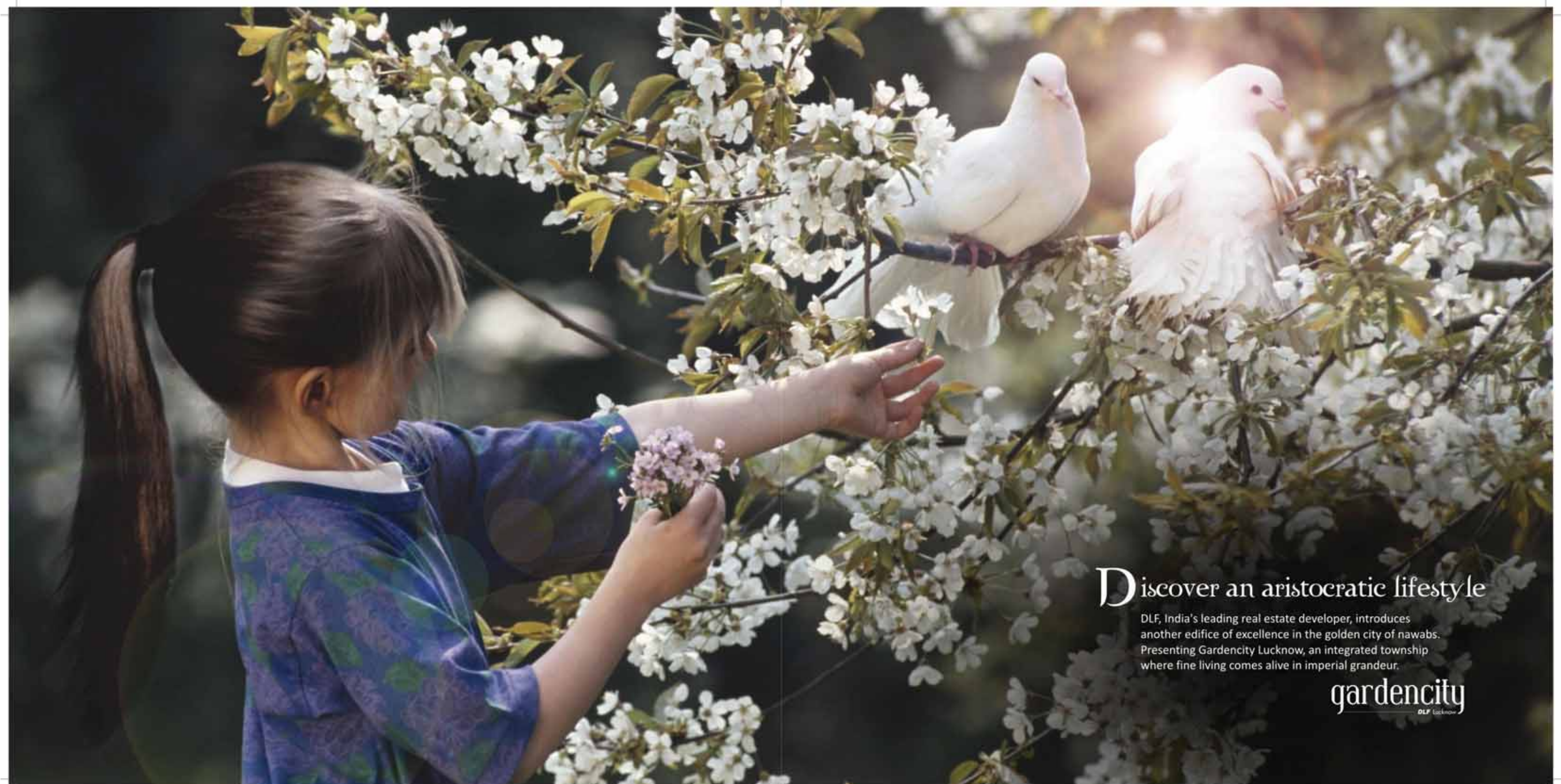
Park Place, Jalandhar

Gateway Tower, Gurgaon

DLF Emporio, Delhi



Bengaluru, Chandigarh, Chennai, Faridabad, Gurgaon, Hyderabad, Indore, Jalandhar, Kasauli, Kochi, Kolkata, Lucknow, New Delhi, Noida, Panchkula, Pune, Shimla



## Discover an aristocratic lifestyle

DLF, India's leading real estate developer, introduces another edifice of excellence in the golden city of nawabs. Presenting Gardencity Lucknow, an integrated township where fine living comes alive in imperial grandeur.

**gardencity**  
DLF Lucknow



## Build your dream home

Sprawling across 248 acres of lush greens and wide open vistas, Gardencity is a harmonious blend of residential, retail and hospitality projects. The initial offering at Gardencity, Lucknow, are its spacious residential plots.

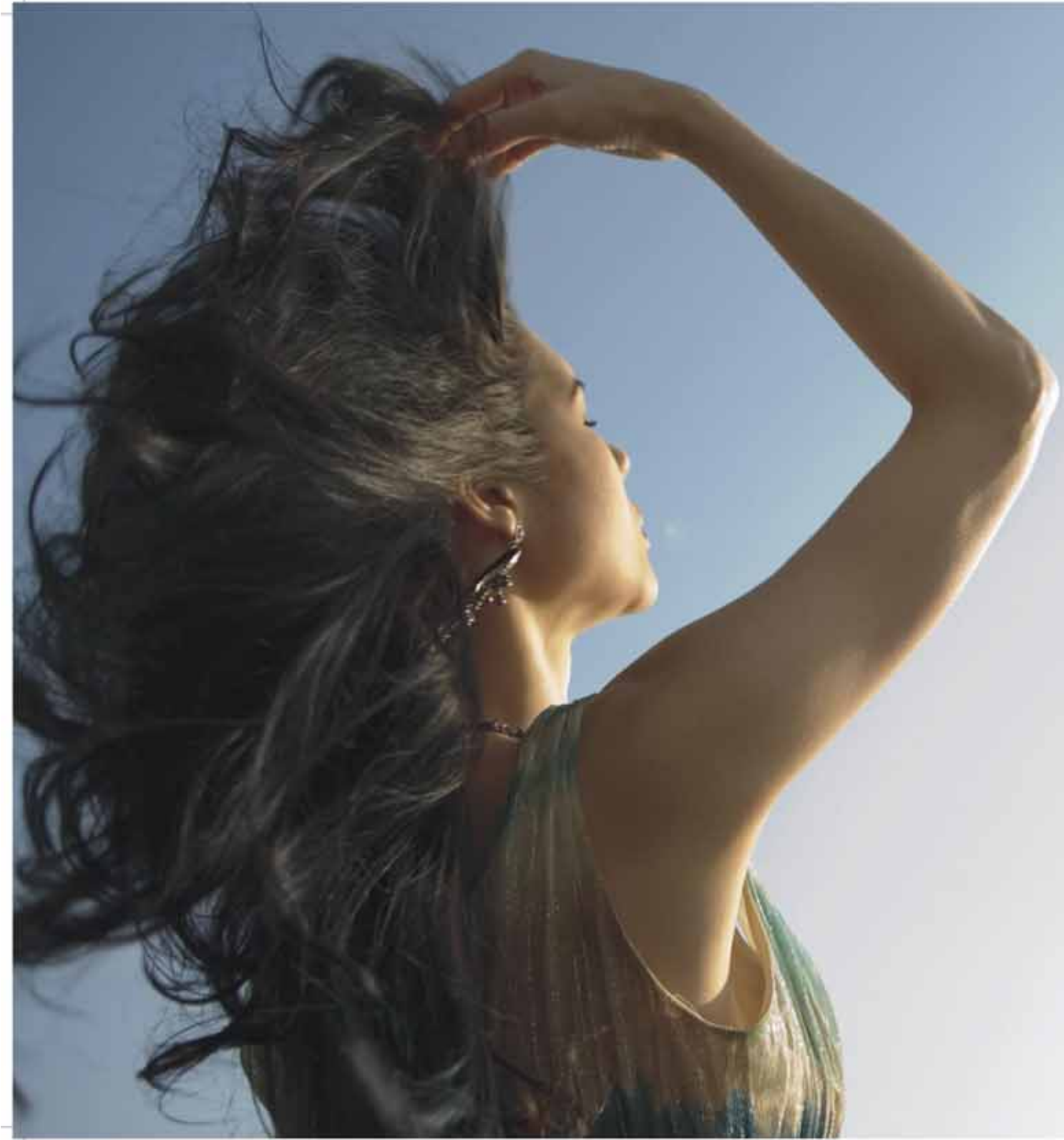


# Location Map

## DISTANCE CHART

Airport	12 Kms.
Hazratganj (C.B.D)	17.5 Kms.
Railway Station	15 Kms.
SGPGI	5 Kms.
Amar Shaheed Path	7 Kms.






Live the DLF life



## Discover the DLF grandeur

Complete with meticulous planning and excellent infrastructure, Gardencity is set to redefine residential standards of the region with features like:

- Lush green surroundings
- Eco-friendly environs
- Excellent road infrastructure: Main road of the township would be approx. 200 ft. wide and the internal and sectoral roads would be 30 ft. to 80 ft. wide



## Discover an environment that sets you free

Complying with all guidelines laid down by the Ministry of Environment, Gardencity's lush green environs come equipped with eco-friendly measures.

- 37 acres of greens (approx.)
- Rain water harvesting
- Solar power supply
- Sewage treatment plant





## Medical Facilities

To make sure that you never have to compromise on the health of your loved ones, the township will provide easy access to essential medical services within the vicinity.



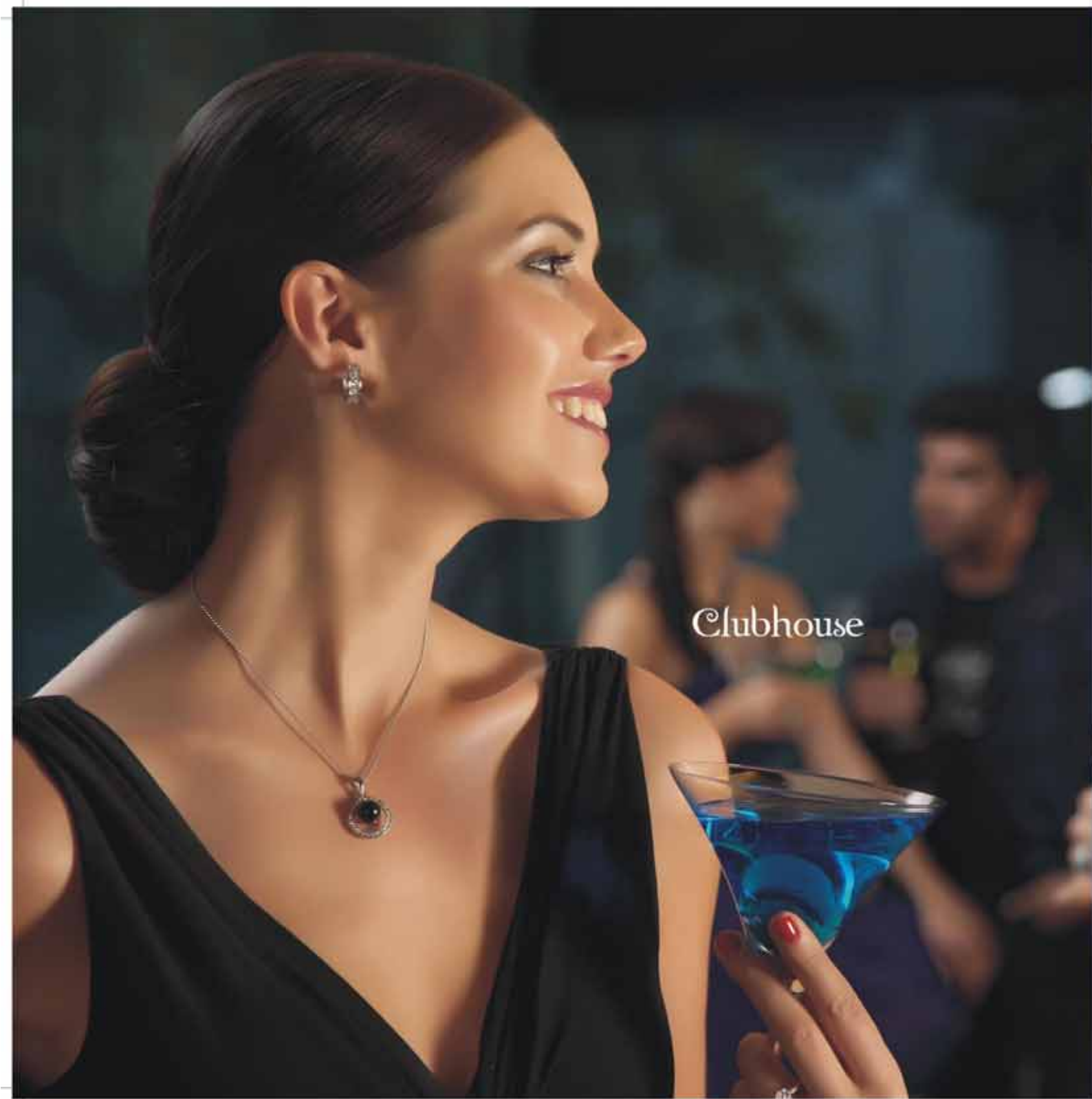
## Educational Facilities

The township is proposed to have multiple educational facilities in the form of nursery and high schools, to ensure that your little ones never have to go too far for their education.

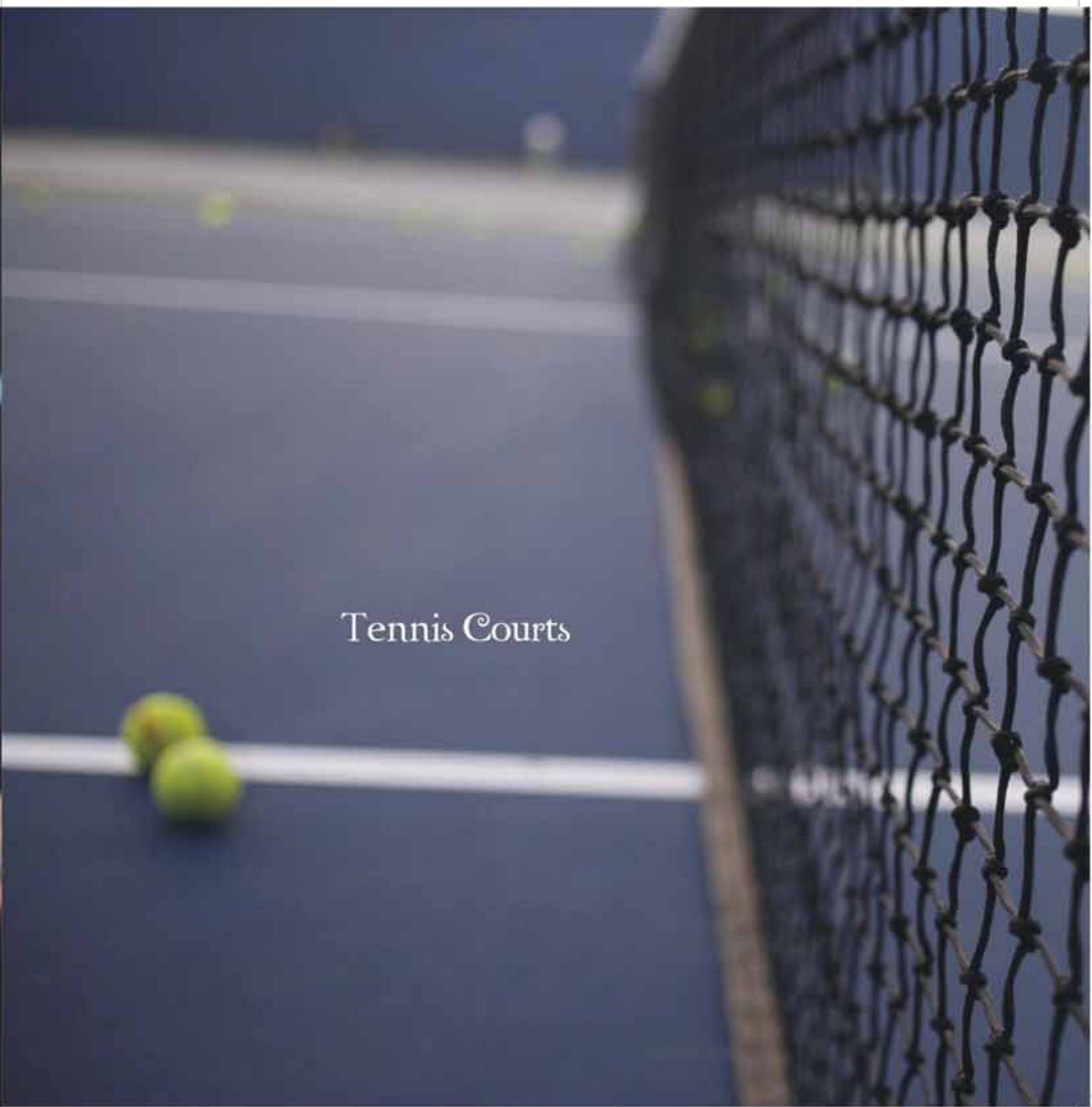


# Clubhouse

Unwind and celebrate life at the stately Clubhouse spread over 1.85 acres at Gardencity, Lucknow.



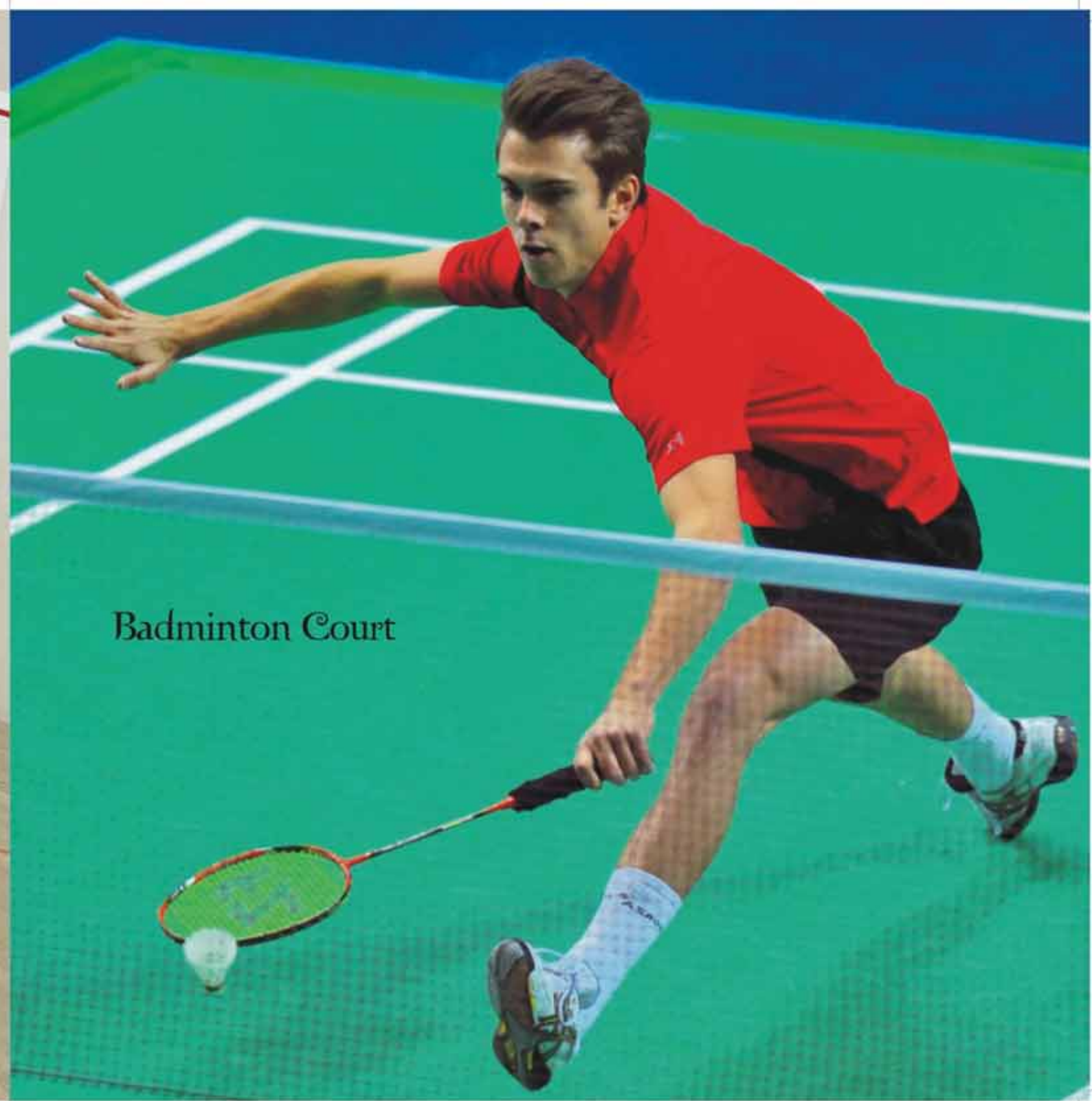
Clubhouse



Tennis Courts



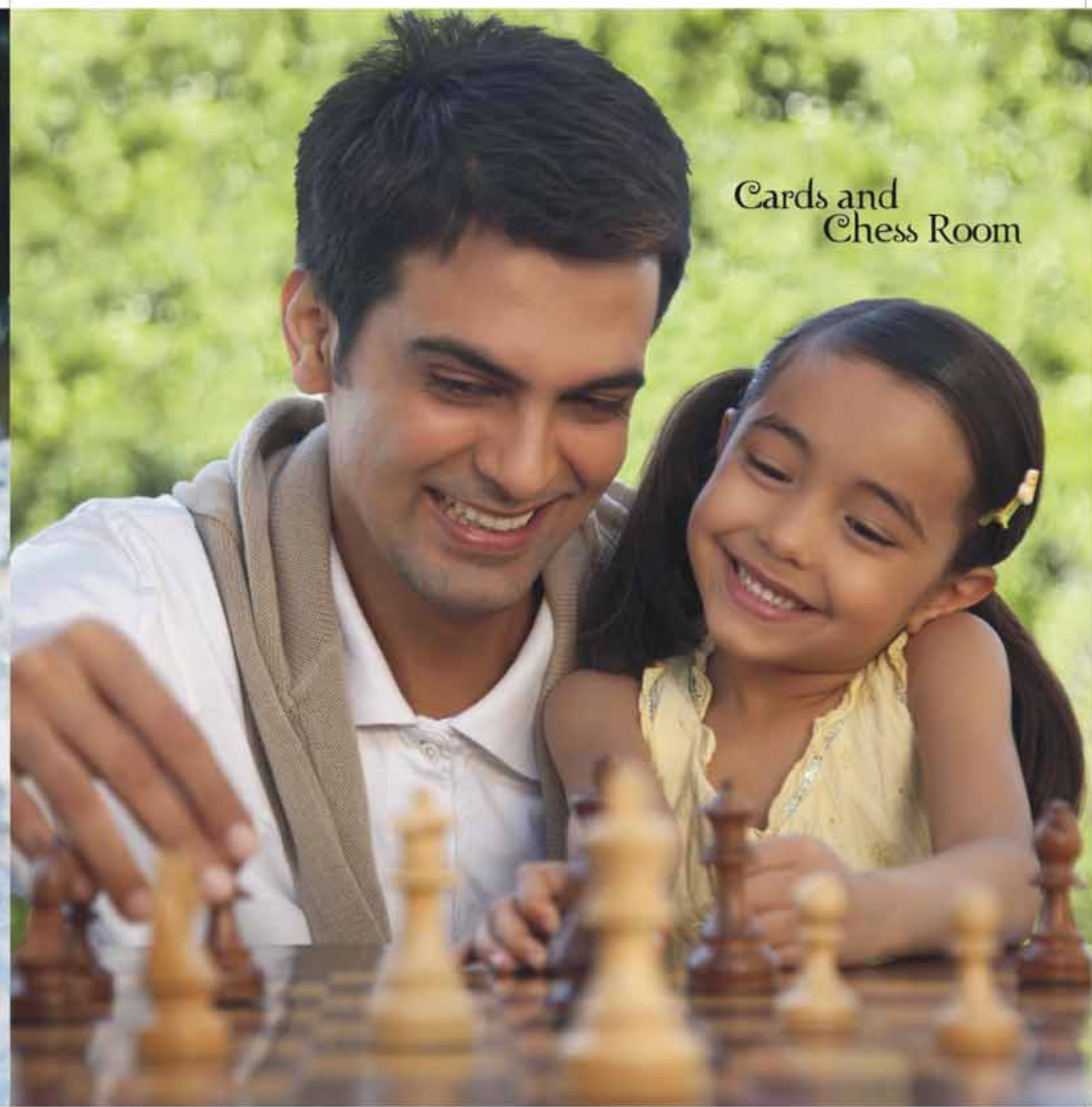
Squash Courts



Badminton Court




Swimming Pool



Cards and  
Chess Room

A man and a woman are playing pool in a billiards room. The man is leaning over the table, holding a cue stick, and is about to take a shot. The woman is standing behind him, looking on. The room has dark wood paneling.

Billiards Room

A restaurant table setting is shown. In the foreground, there is a white napkin folded into a triangle, resting on a white plate. To the right, there are two wine glasses. The background is blurred, showing other tables and chairs in a restaurant setting.

Restaurant

\*Mentioned features and amenities are indicative  
1 Sq. Mtr. = 10.764 Sq. Ft. Terms & Conditions Apply.



## Own a piece of DLF

**Plot sizes**

249 sq.yds., 300 sq.yds.,  
400 sq.yds., 500 sq.yds.