

**PURAVANKARA**

**PURVA  
CLERMONT  
CHEMBUR**

*A world apart*



Image for representational purposes only

RESIDENCES  
THAT TRANSPORT YOU  
TO A SPECIAL PLACE:  
A WORLD OF INDULGENCES.

The inspiration for creating the finest indulgences in the city?

The finest ones in the world.

Purva Clermont offers a singular location advantage:

home via major world attractions. Skip the Monday morning blues and scroll through acres of greenery, or try the Urban Sky Runner trail

for the fastest route to a fitter you. Coming home to

Clermont makes you realise that when it comes to luxury, everything

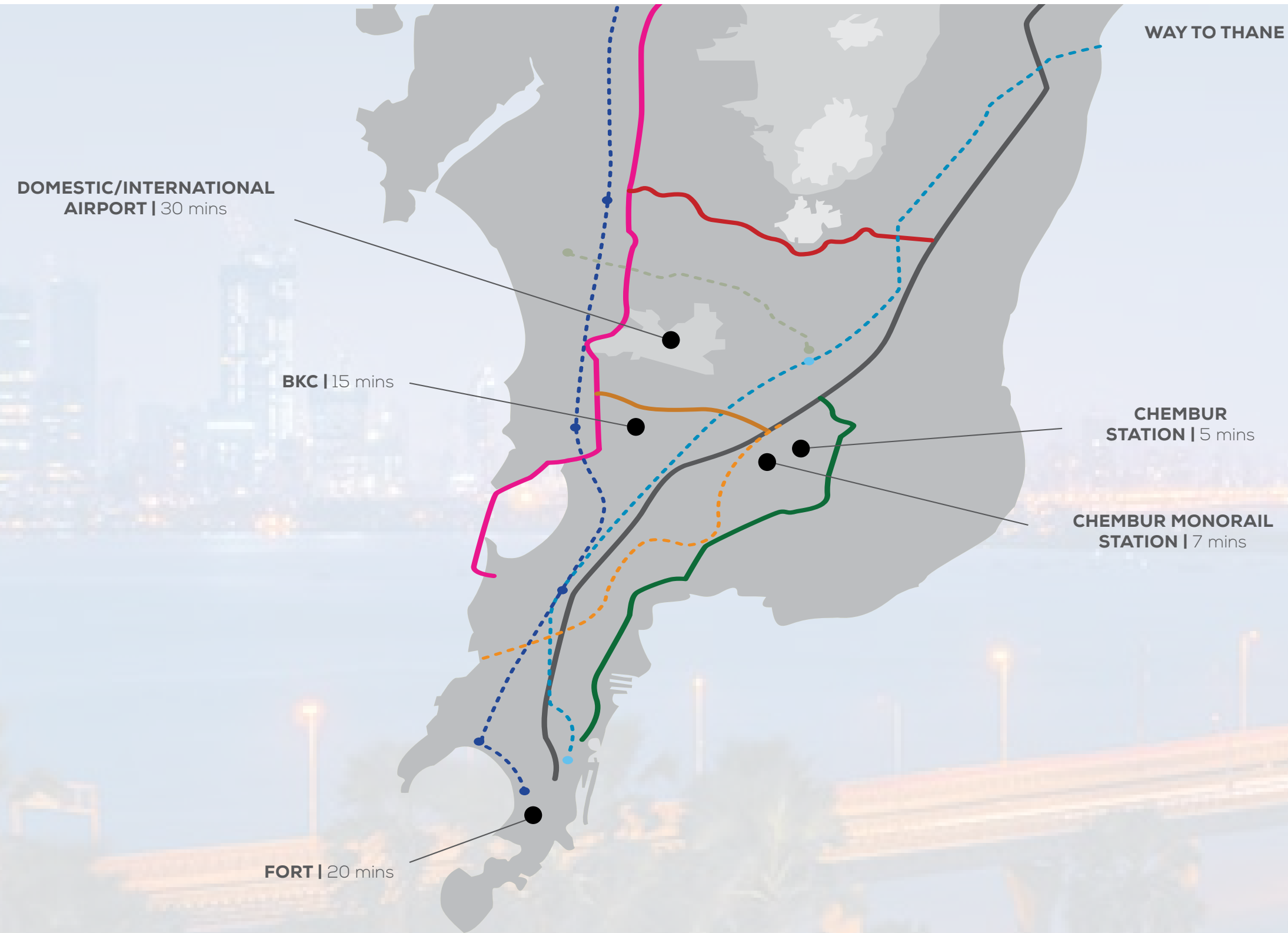
you've experienced so far is simply an appetiser.



THEY SAY THE LOCATION  
DEFINES A LANDMARK.  
BUT EVERY ONCE IN A WHILE,  
THERE COMES A LANDMARK THAT  
DEFINES THE LOCATION.

As the city of Mumbai expands and the centre shifts, there is a new hub of life and commerce that's taking centre stage – Chembur. Poised for phenomenal growth, Chembur today is considered one of the most coveted residential addresses. It is in proximity to BKC and other key business districts in the North and South. From the Sion-Panvel expressway connecting Navi Mumbai to Eastern Freeway, connecting South Mumbai, every part of the city is easily accessible from Purva Clermont.

# EXPERIENCE A WORLD WITH YOU IN THE CENTRE



| ROAD |              | RAIL |           |
|------|--------------|------|-----------|
|      | W.E. HIGHWAY |      | WESTERN   |
|      | E.E. HIGHWAY |      | CENTRAL   |
|      | E. FREEWAY   |      | METRO     |
|      | JVL          |      | MONO RAIL |
|      | SCLR         |      |           |



# ENJOY NEVER BEFORE COMMUTE PRIVILEGES



## WORK

BKC: 15 mins | Fort: 20 mins | Lower Parel: 30 mins  
SEEPZ: 35 mins



## TRAVEL

Lokmanya Tilak Terminus: 15 mins | Kurla Station: 15 mins  
Proposed Chembur Metro Station: 5 mins  
Ghatkopar Metro Station: 20 mins | Monorail: 7 mins  
Domestic Airport: 30 mins



## CONNECT

SCLR: 10 mins | BKC-Chunabhatti Flyover: 7 mins  
Eastern Freeway: 3 mins | Eastern Expressway: 10 mins  
Sion-Panvel Highway: 15 mins



## REJOICE

Phoenix Market City: 20 Mins | R City Mall: 25 Mins  
Big Cinemas: 10 Mins



## CARE

Tata Hospital: 05 Mins | Asian Heart Hospital: 23 Mins  
Hinduja Hospital: 30 Mins

\*The travel times mentioned here are estimated and not to be considered as actual as it may vary depending on the day, time and traffic conditions.



## BLENDING GENIUS & LEGACY: A SYMBIOTIC UNION

With 30+ years of experience in Europe and Asia, Andy Fisher is a creative mastermind of unique and environmentally responsive buildings. With projects ranging from resorts to residential complexes, his designs express a deep understanding of the environment and locality. His design outcomes are based on innovation and impressions of global diversity. At Purva Clermont, Andy Fisher has truly redrawn the boundaries of a global lifestyle.



*Clubhouse Design  
by Singapore based Architect  
- Andy Fisher*

*Andy Fisher workshop*



ELEVATING  
YOUR LIFE  
IS AS SIMPLE AS  
HEADING TO  
THE TERRACE.

NAIL THE EAGLE POSE IN A  
NEW YORK YOGA AVENUE INSPIRED ZEN DECK.







HOST A COOKOUT  
AT THE ROASTERY  
URBAN GRILLE  
- INSPIRED BY  
SOUTH KOREAN BARBECUES.

CORE FITNESS À LA MONACO'S  
FITNESS AVENUES.  
THE PERFECT COUNTERBALANCE  
FOR MUMBAI'S  
ICONIC FOOD SCENE.

Daily workouts will become an easy routine at an indoor space inspired by Monaco's famed fitness avenues. And a boutique gymnasium with state-of-the-art equipments ensure that there are always more reasons to hit the gym than to skip it.



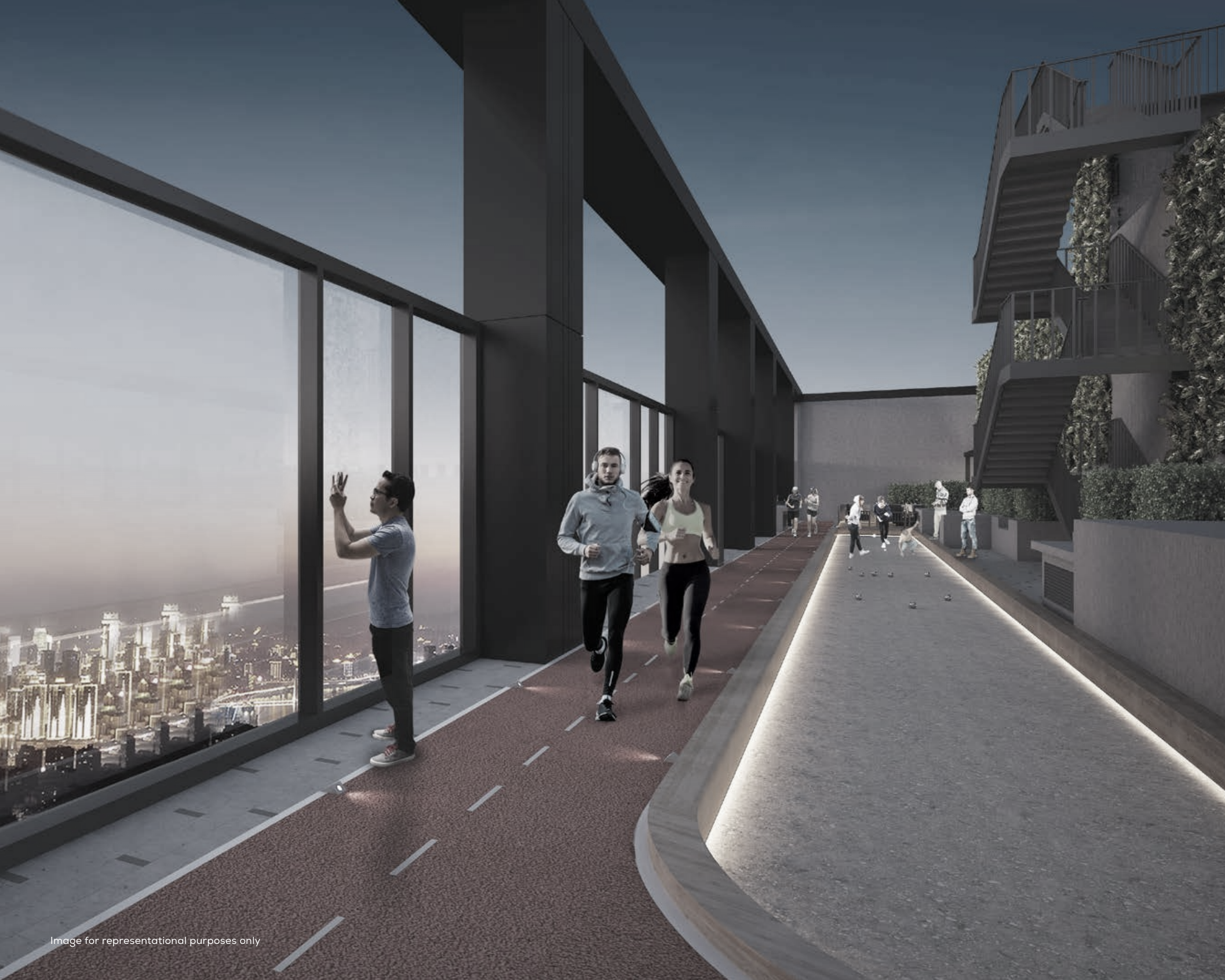


Image for representational purposes only

GET ACQUAINTED WITH  
SOMEONE SPECIAL  
AT THE URBAN SKYRUNNER:  
A FITTER YOU.

Chase all your fitness goals at the Urban Skyrunner. An integrated fitness loop inspired by the Skyrunner World series. A 400-metre ground level loop connects to a 200-metre rooftop track and a 333 step vertical climb.

TO STEP INTO A WORLD  
OF INCREDIBLE LUXURY  
AND LEISURE, JUST TAKE  
THE ELEVATOR RIDE TO  
THE SWIMMING POOL.

The leisure lounge is designed to give you a world  
of experiences, starting with a dip in the pool, celebrating  
the sunset and everything in between.





YOU'LL FIND BOTH,  
MANY REASONS AND  
VENUES TO THROW  
THE PERFECT  
PARTIES HERE.

Our indoor party hall for 30, is the perfect way to relive  
the old adage, 'big things come in small packages'.

INHALE: THE LIKES OF GARDENIA,  
JASMINE AND ROSE.  
EXHALE: ALL YOUR STRESS.

This Eden inspired by the aromatic gardens of Kyoto, Japan, is  
a world of exotic fragrances. Step into paradise, where stress is  
unheard of and worries are a thing of the past.





INVITE A SPECIAL  
GUEST TO YOUR  
NEXT GET-TOGETHER:  
NATURE.

Discover how time spent with friends can also be time spent in getting in tune with nature. Inspired by popular Asian architecture and landscaping, our Asian Tropical Seating is the perfect setting for every moment from sunrise to sunset.

## THE MOUNT ROOM

Indoor party hall



Image for representational purposes only

## THE LINKS

The handcrafted lounge powered by  
Trackman Virtual Golf Simulator



Image for representational purposes only





HAPPINESS IS  
RUNNING BAREFOOT  
IN THE GRASS  
AND OTHER EVERYDAY  
DISCOVERIES.


The Multipurpose Lawns are the perfect escape from the world, right at your doorstep. Head here for picnics with the family, barbecues with the neighbours or cloud-watching on your own.



MAKE GROWING UP AN ADVENTURE.

[CLIMBING LOG](#) | [FALLEN TREE PLAY](#) | [ZIPLINE](#)

Image for representational purposes only



FIND SOMETHING SPECIAL  
AT THE END  
OF EVERY DAY: BLISS.

WALKWAY & JOGGING TRACK | REFLEXOLOGY PATH | PET ZONE

Image for representational purposes only



ROOFTOP INDULGENCES  
TO EMBRACE A  
SIGNATURE LIFESTYLE

Wellness Zone | Roastery | Seating Space  
Viewing Deck | Zen Deck

A LUXURY RESERVED  
FOR THE PRIVILEGED FEW:  
A GRAND WELCOME.

Nothing says you've arrived better than the impressive entrance to Purva Clermont. From the towering gates to the top-notch security, this is a welcome befitting a residence that offers you the world.



Artistic Impression

ENTRANCE GATE

YOUR INTELLIGENT HOME TAKES  
CARE OF ALL YOUR NEEDS



Image for representational purposes only

**BluNex Life**<sup>™</sup>  
Intelligent Next Gen Homes

EMBRACE HOMES REplete WITH  
FUTURISTIC COMFORTS

Mobile App Enabled Home Automation

High-Tech Main Door Security System

Biometric Main Door Lock

Multiple Lighting & Cooling Settings

Voice Enabled Help

Hands free Music Device

Google Chrome Cast

Hands Free Master Switch

Pre-programmed Morning Settings

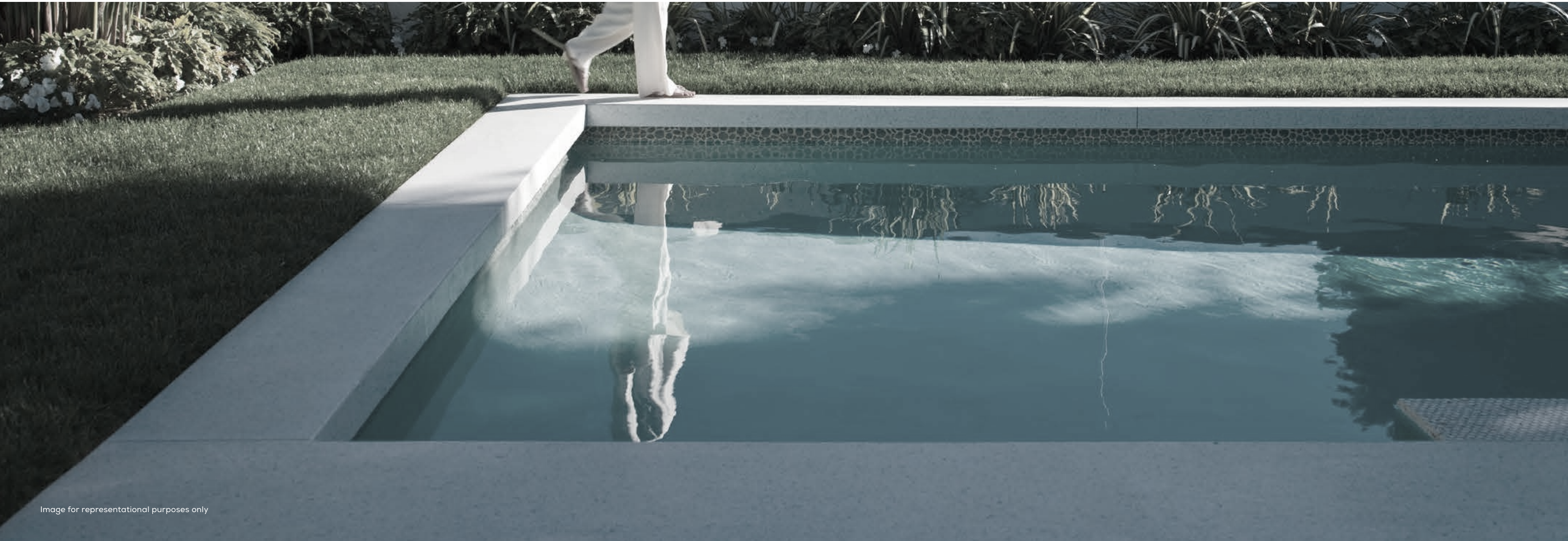
Automated Security Features

Wi-Fi Boosters, Intelligent Curtain Control,  
Gas Detector, Sensor Lights in Foyer area

A CLUBHOUSE  
THAT OFFERS SOMETHING,  
NOTHING ELSE  
IN THE CITY DOES.

A BREATH OF FRESH AIR,  
LITERALLY.

Better mental performance, elevated mood and relaxed physical and mental health.  
Just a few of the benefits of oxygen-rich air. At Purva Clermont we want the best  
for you and that's why our clubhouse offers fresh, oxygen rich air at regular intervals  
throughout the day.





**YOUR MOTIVATION TO STAY  
HYDRATED HAS NEVER BEEN  
THIS CONVENIENT.**

Potable tap water is something that wasn't just unheard of, it was unsafe. Well, thanks to BluNex™ Life, not only is it safer than ever, it's also more convenient. Water is processed through a centralised treatment plant and passed through multiple sediment filters and activated carbon and membrane filters. The purest quality and the freshest drinking water straight to your kitchen tap.



LET ELEGANCE TAKE OVER  
WHEREVER YOU STEP



Photos have been shot on site.

LIVING AREA

CHERISH OPULENCE  
AT ITS BEST



Photos have been shot on site.

Image for representational purposes only.

MASTER BEDROOM

REVERE A MAGNIFICENT  
ENCLAVE OF LEISURE



SUNDECK IN SELECT HOMES

Image for representational purposes only

# MASTER PLAN

## LEGEND

### ENJOY THE BLISS OF NATURAL ESCAPDES AT ZERO LEVEL

1. Log Benches
2. Play
3. Climbing Log
4. Fallen Tree Play
5. Camping Area
6. Hammock Zone
7. Barbeque Deck
8. Picnic Area
9. Tree Climbing / Zip- Lining
10. Pet Zone
11. Security Gate
12. Walkway / Jogging Track
13. Reflexology Path
14. Car Wash
15. Amphitheatre
16. Lawn

### PODIUM INDULGENCES TO REVERE A REWARDING LIFE

17. Plaza
18. Sitting Alcove
19. Children Play Area
20. Basketball Hoop
21. Gathering Space
22. Skylight At Podium
23. Senior Citizen Space
24. Pool Deck
25. Kids Pool
26. Swimming Pool
27. Green Zone

### ROOFTOP INDULGENCES TO EMBRACE A SIGNATURE LIFESTYLE

28. Wellness Zone
29. Roastery
30. Seating Space
31. Viewing Deck
32. Zen Deck



# PURAVANKARA

With 47 years in real estate, Puravankara stands tall as one of the top 4 developers in India. A credo of uncompromising values, customer-centricity, robust engineering, and transparent business operations, has earned the company many accolades; from both customers and stakeholders at large. Popular for its unique conceptualizing sensibilities, Puravankara is not just exploring theme-based projects but also adapting and executing bold new living concepts. Over the years, brand Purvankara has grown from strength to strength and has completed 44 million square feet jointly by Purvankara and Provident. Not surprisingly, today Purvankara is home to over 42,500 happy families.



47 years of excellence in the Real Estate industry.



44 million sq. ft. developed



42,500+ Homes delivered



Pioneers of theme-base projects in India

9 INDIAN CITIES ON OUR MAP AND MORE TO COME



# PURAVANKARA

Site address: Off. Sion-Panvel Highway, China Bistro Lane, Chembur, Mumbai

Corporate address: Puravankara Limited, 130/1, Ulsoor Road, Bangalore - 560042

Call: +91 - 080 - 44 559 912 | Web: [www.puravankara.com](http://www.puravankara.com) | Mail: [sales@puravankara.com](mailto:sales@puravankara.com)

MahaRERA registration no.: Wing A - P51800028571, Wing B - P51800028427, Wing C - P51800028428,  
Wing D - P51800028494 & Wing E - P51800028492 available on [maharera.mahaonline.gov.in](http://maharera.mahaonline.gov.in)

The photographs of the interiors, surrounding views and location may have been digitally enhanced or altered and do not represent actual or surrounding views. Standard fittings and finishes are subject to availability and vendor discretion. The images shown in the brochure are not standard and will not be provided as a part of an apartment. The information contained herein is believed to be true but not guaranteed. The colours of the buildings are indicative. This is a reference document intended only to provide generic information and does not constitute an offer or contract. | Project financed by **IndusInd Bank**