

A photograph of a man and a woman in a domestic setting. The man, on the left, is wearing a light blue button-down shirt and has his arms around the woman. The woman, on the right, is wearing a light pink dress and is pointing her right hand towards a bright window. The background is a bright, overexposed window area, suggesting a view of the outdoors.

RAHUL  
**east  
view**

1 & 2 BHK Homes  
Hadapsar





THE  
peace OF  
living

Peace ... it's a rarity in today's crowded, noisy, polluted world. So Rahul presents East View - homes that create a world of peace for you.

Whether it is the location, so conveniently close to schools, business districts and entertainment, or the scenic surroundings; the well-planned interiors or the common amenities - every aspect is designed to nurture peace and fill your life with rejuvenation, fulfillment and happiness.



THE  
**peace** OF  
**smart**  
PLANNING



Rahul East View is planned with pizzazz! Elegant, stylish, aesthetic – the architecture is linear, ensuring ample natural light and ventilation for each apartment. Moreover, each home comes with a pleasant balcony so you enjoy a fine view of the scenic surroundings - certain to fill your heart with a sense of peace and wellbeing.







THE  
**peace** OF  
**serene**  
SURROUNDING

Great thought and planning has gone into designing the project as a complete residential environment. To complement the stylish interiors, the outdoors are planned with scenic landscaping, ample spaces and facilities for relaxation and recreation.

Add to this the location at Hədəpsər, an area that's quiet, green and peaceful. And you have a living environment that nurtures bliss



THE  
**peace** OF  
**family**  
TIME



Rahul East View understands the importance of spending time with family. Of bonding over activities that are relaxing and rejuvenating – not just with family but also with neighbours. That's why, Rahul East View comes equipped with a clubhouse and many amenities for fitness & recreation. Indoor games, party lawn, children's play area – they ensure you're never bored at your East View home!



## SPECIFICATIONS

- Designer Entrance Lobby
- Gypsum Finished Walls
- Vitrified Tiles in entire flat
- Designer Toilet
- Granite Kitchen Counter with Stainless Steel Sink
- Good Quality Sliding Windows with mosquito mesh
- Generator Backup for common area

## PROJECT AMENITIES

- Landscaped Garden
- Children's Play Area
- Concrete / Paved Internal Roads-
- Generator Backup for Lift & Common Areas
- Water Treatment Plant

## ECO-FRIENDLY AMENITIES

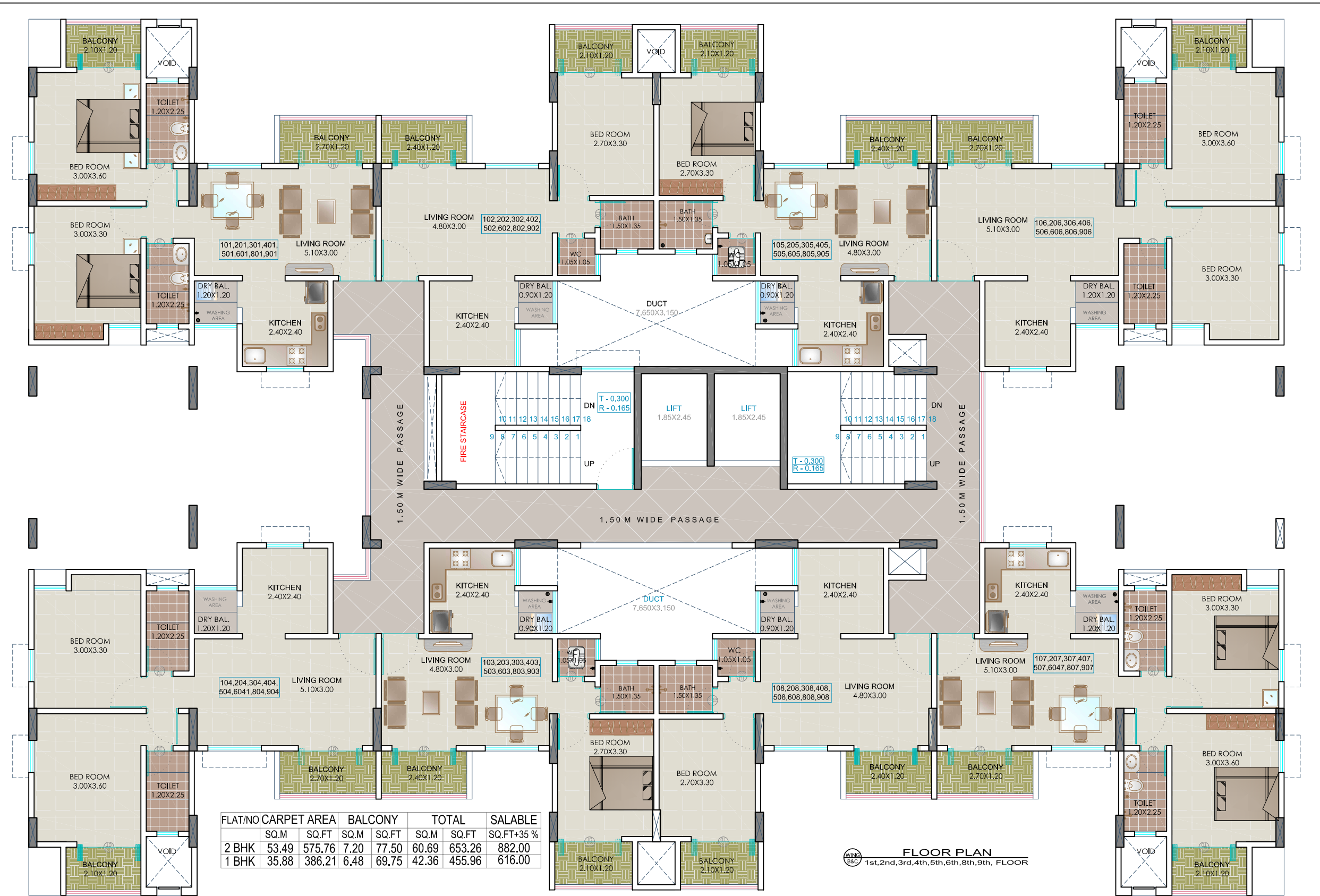
- Solar Water Heater System for master toilet / Solar Electricity Generator
- Vermiculture Pit / Bio-Sanitizer pits for wet waste
- Re-cycling of Water for flushing
- Rain Water Harvesting

## CLUB AMENITIES

- Club House
- Gymnasium
- Indoor Games
- Party Lawn







FLAT/NO	CARPET AREA		BALCONY		TOTAL		SALABLE
	SQ.M	SQ.FT	SQ.M	SQ.FT	SQ.M	SQ.FT	
2 BHK	53.49	575.76	7.20	77.50	60.69	653.26	882.00
1 BHK	35.88	386.21	6.48	69.75	42.36	455.96	616.00

**FLOOR PLAN**  
1st, 2nd, 3rd, 4th, 5th, 6th, 8th, 9th, FLOOR

### FLOOR PLANS

1<sup>st</sup>, 2<sup>nd</sup>, 3<sup>rd</sup>, 4<sup>th</sup>, 5<sup>th</sup>, 6<sup>th</sup>, 8<sup>th</sup>, 9<sup>th</sup>

FLAT/NO	CARPET AREA		BALCONY		TOTAL		SALABLE
	SQ.M	SQ.FT	SQ.M	SQ.FT	SQ.M	SQ.FT	
2 BHK	53.49	575.76	7.20	77.50	60.69	653.26	881.90
1 BHK	35.88	386.21	6.48	69.75	42.36	455.96	615.54





## FLOOR PLANS

### 7<sup>th</sup> REFUGE FLOOR

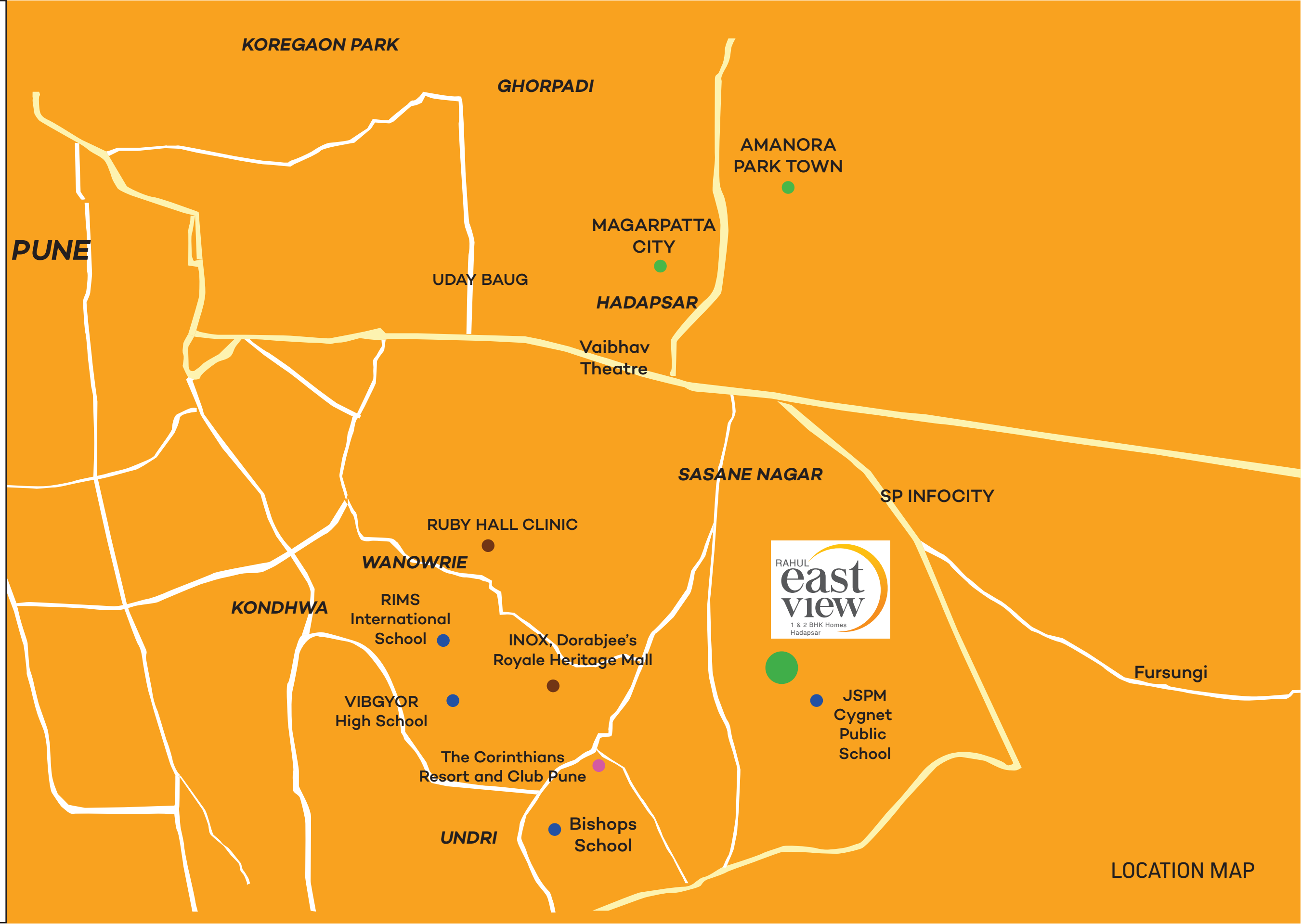
FLAT/NO	CARPET AREA		BALCONY		TOTAL		SALABLE
	SQ.M	SQ.FT	SQ.M	SQ.FT	SQ.M	SQ.FT	SQ.FT+35 %
2 BHK	53.49	575.76	7.20	77.50	60.69	653.26	882.00
1 BHK	35.88	386.21	6.48	69.75	42.36	455.96	616.00
708	50.53	543.90	7.92	85.25	58.45	629.15	849.00



Hadapsar has good internal roads and enjoy connectivity with central Pune through the Pune - Solapur Highway while Handewadi Road is the major road which starts from the railway crossing line near Hadapsar. The Pune Railway Station is 11.5 kms via the Handewadi Road and the Pune International Airport is 16 kms via the Airport Road. Necessities like schools, markets, hospitals are all close by, so residents enjoy easy commuting to and from home.

**KEY DISTANCES:**

- JSPM Cygnet Public School: 1.1 kms
- Corinthians Club: 5.6 kms
- Bishop's School: 6.6 kms
- Ruby Hall Clinic: 6.8 kms
- Amanora Town: 7.1 kms
- VIBGYOR High School: 7.6 kms
- Magarpatta City: 7.7 kms
- RIMS International School: 8.9 kms
- Inox, Dorabjee's Mall: 9.1 kms







**RAHUL**  
CONSTRUCTIONS

We are a company built on a legacy of trust and commitment, delivering best value for over 3 decades now. With a multitude of offerings, we are sure there's one that's 'just right' in every way for you.

What's unique at Rahul Construction Company is that we not just build, we create dreams for a newer tomorrow. A dream where you belong in a space that makes living special. With residential and commercial projects that are the cornerstone of construction, our creations encompass more than 7 million sq.ft. of prime real estate. Our projects offer a unique blend of modern living and old world charm, where design and décor come together to add a whole new dimension to space. So come home to Rahul Construction Company.





# RAHUL CONSTRUCTIONS

[www.rahulconstruction.com](http://www.rahulconstruction.com)

Corporate office: "Rahul Capital", 115/B, Opp. Prabhat Police Chowky, Prabhat Road, Pune 411004.

Tel: 78878 83733 | 020 2543 7921

Disclaimer: This brochure is purely conceptual and tentative and is designed in good faith to give a fair and general view of the project and is not a legal offering, nor will it be deemed to be part of any agreement. Photographs are not comprehensive or current. Nothing contained in this brochure will take precedence in the final agreement. Number of buildings, areas, flats/units, amenities, specifications, floors, roads, open space, etc. shall be revised at the discretion of the promoters. The plans, specifications, images and other details herein are only indicative and the developer/owner reserves the right to change any or all. Promoters reserve the right to amend the layout, plans, elevations, designs, specifications, amenities, areas, etc. without notice. The printed material does not constitute a contract/offer of any type between the developer/owner and the recipient. Any purchase/lessee of this development shall be governed by the terms and conditions of the agreement of sale/lease entered into between parties and no details mentioned in this printed material shall in manner govern such transaction. 'Future development' may consist of high-rise buildings etc.



MAHARERA REG. No.: P52100017005 | <https://maharera.mahaonline.gov.in>