

The logo features a stylized white icon of a temple gopuram above the letters 'SG' in a bold, orange, sans-serif font. Below this, the word 'SAI' is written in a smaller white font, and the word 'GRACE' is written in a large, white, serif font.

SAI **SG**
GRACE

2 BHK SPACIOUS HOMES
PUNAWALE





ABOUT US

Years of experience has helped **Sacho Satram Group** fashion many landmark projects in Pune. Committed to their core values of integrity, equality and excellence with a steadfast financial perspective and a revolutionary vision, **Sacho Satram Group** fulfills its commitments, always on time. Engineered to perfection, only the best of the materials and methods are efficiently used by qualified and trained personnel showing the Group's commitment towards quality work and loyalty towards its customers.

Not only does every project by **Sacho Satram Group** stand head and shoulders above the rest, but also offers its esteemed clientele excellent value for money and satisfaction.



10+
LANDMARKS



3000+
HAPPY
RESIDENCES



15+
YEARS OF
EXPERIENCE



10L+
SQ.FT. AREA
DEVELOPED

LEGACY



Conceptual Image

ABOUT PROJECTS

Welcome to **Sai Grace**, where your dream of a tranquil and spacious home becomes a reality. We have envisioned this project to provide you with a living experience full of comfort and contentment. Offering hearty layouts, our flats are more than just a place to live; they are a sanctuary of blissful living.

Each unit at **Sai Grace** is thoughtfully designed with spaciousness as a priority, ensuring that your family has an ample living space. Based in the rapidly developing location of Punawale, **Sai Grace** offers the best of both worlds. Indulge in the convenience of a prime location while you enjoy the serenity and tranquility that our project provides.

With the ever-growing demand for quality residences in this sought-after location, the value of your investment is bound to appreciate over time. Our project presents a unique opportunity to secure your future and enjoy the present comforts of a blissful home.

Discover the true meaning of blissful living, only at **Sai Grace**. Embrace spaciousness, revel in serenity, and unlock the potential for a lifetime of contentment. Come join our community and experience the perfect blend of comfort, convenience, and investment opportunity that awaits you.



DISCOVER THE **DREAM HOME** WITH GRACE

The **Graceful Living** concept encourages individuals to approach life with **Grace** and finesse, appreciating the beauty in simplicity and finding joy in every moment.

EXPAND YOUR
HORIZONS
WITH GRACE





Artistic Impression



PROJECT HIGHLIGHTS

- » Spacious Carpet Homes
- » Centrally Located
- » Good Ventilation
- » Fully Vastu Compliant Homes
- » Experienced Developer
- » Flat with 2 Balconies
- » Calm & Peaceful Atmosphere





Artistic Impression



LAYOUT PLAN



SPECIAL FEATURES



Lifts



Gymnasium



Provision for Solar Water in Both Bathrooms



Rain Water Harvesting



Generator Back-up for Lights in Common Areas, Lifts & Water Pumps etc.



Entrance Gate with Security Cabin



Children's Play Area



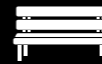
Lanscaped Garden



Fire-fighting System



CCTV



Senior Citizens Sit-out Area



Sewage Treatment Plant

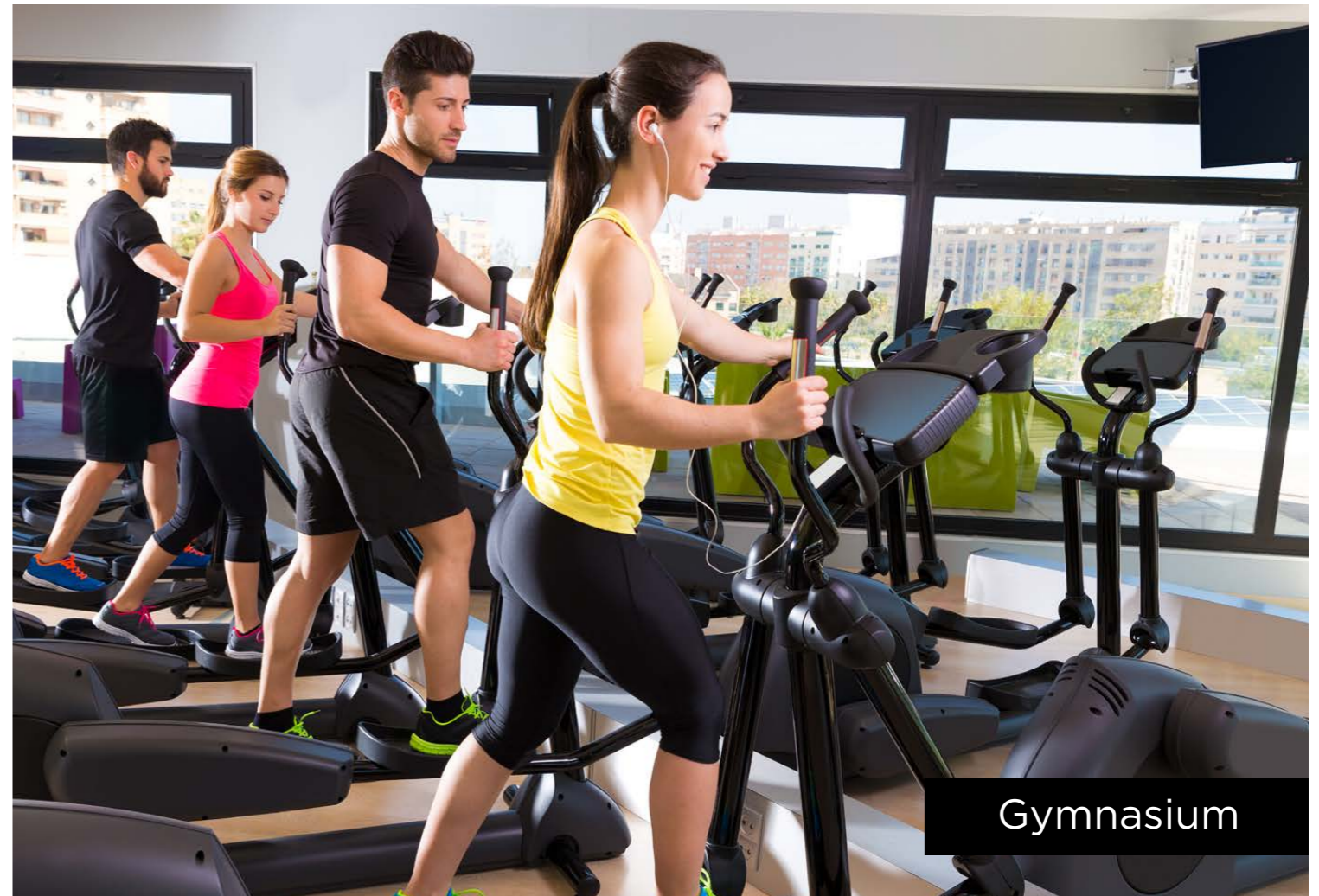


Provision for Garbage Chute





CCTV



Gymnasium



Generator Back-up



Entrance Gate with Security Cabin



Solar Water System



Lift



Sit-out Area



Fire-fighting System

SPECIFICATIONS

STRUCTURE

- » Earthquake resistant RCC framed structure

WALL

- » AAC blocks for external & internal walls
- » External sand faced plaster
- » Internal Gypsum Finish

DOORS

- » Main door - Veneer door with safety lock
- » Other doors - Veneer flush doors

WINDOWS

- » Powder coated aluminium sliding windows with Grill

TERRACE

- » Glass railings & anti-skid tiles

FLOORING

- » Vitrified tiles in all rooms
- » Anti-skid tiles for toilets & bathrooms

KITCHEN

- » Dado tiles upto 4ft above the platform
- » Provision for water purifier
- » Provision for exhaust fan
- » Plumbing & electrical point for washing machine in dry terrace
- » Granite platform with SS sink

TOILET

- » Ceramic designed tiles up to lintel level
- » CP fittings
- » Provision for exhaust fan in all bathrooms
- » Concealed plumbing work
- » Branded sanitary ware

ELECTRIFICATION

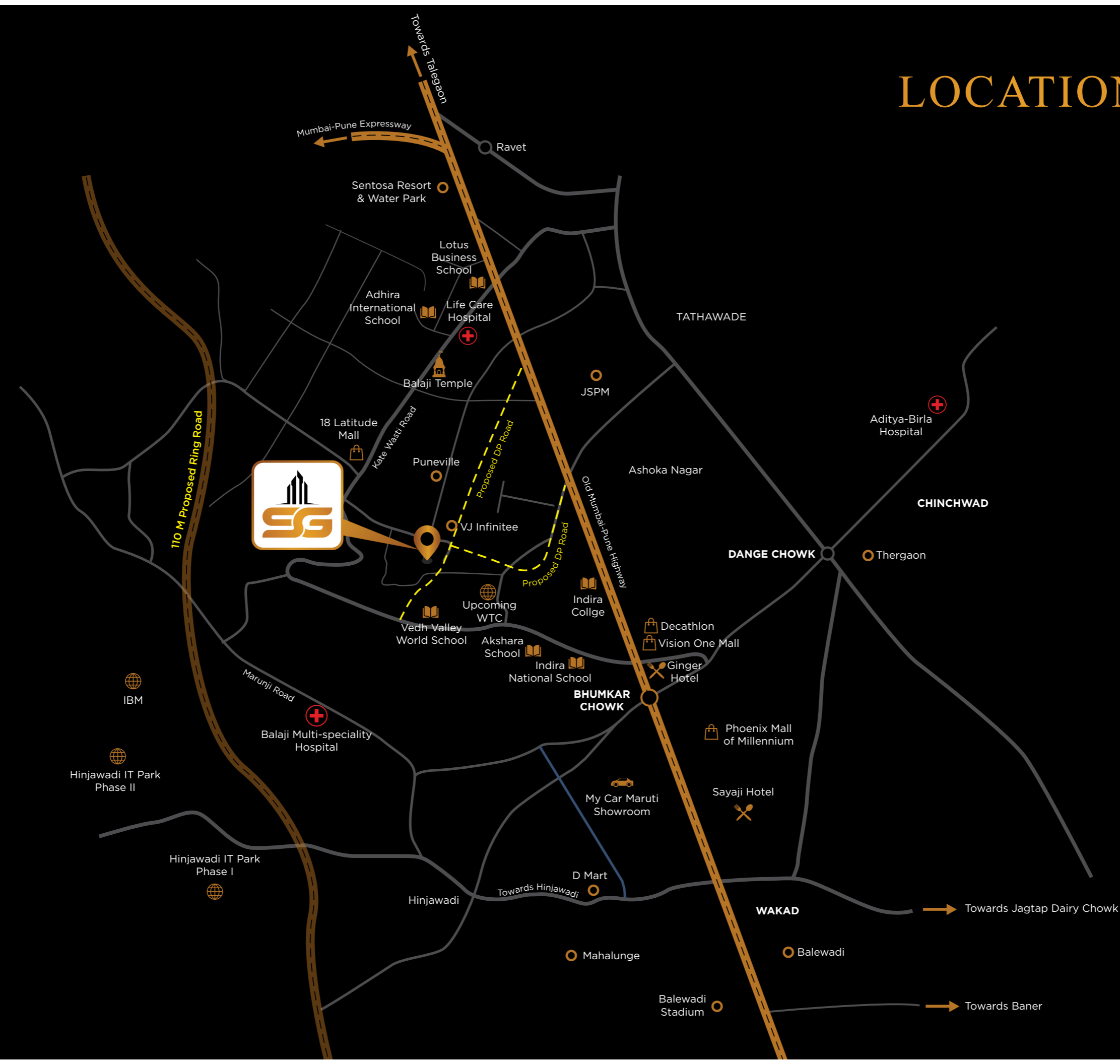
- » Concealed fire resistant copper wiring
- » Modular switches
- » Provision for AC in master bedroom
- » Provision for TV and internet connection
- » Provision for inverter
- » Video door phone

WALL FINISH / PAINT

- » External Apex paint
- » Internal Emulsion paint



LOCATION MAP

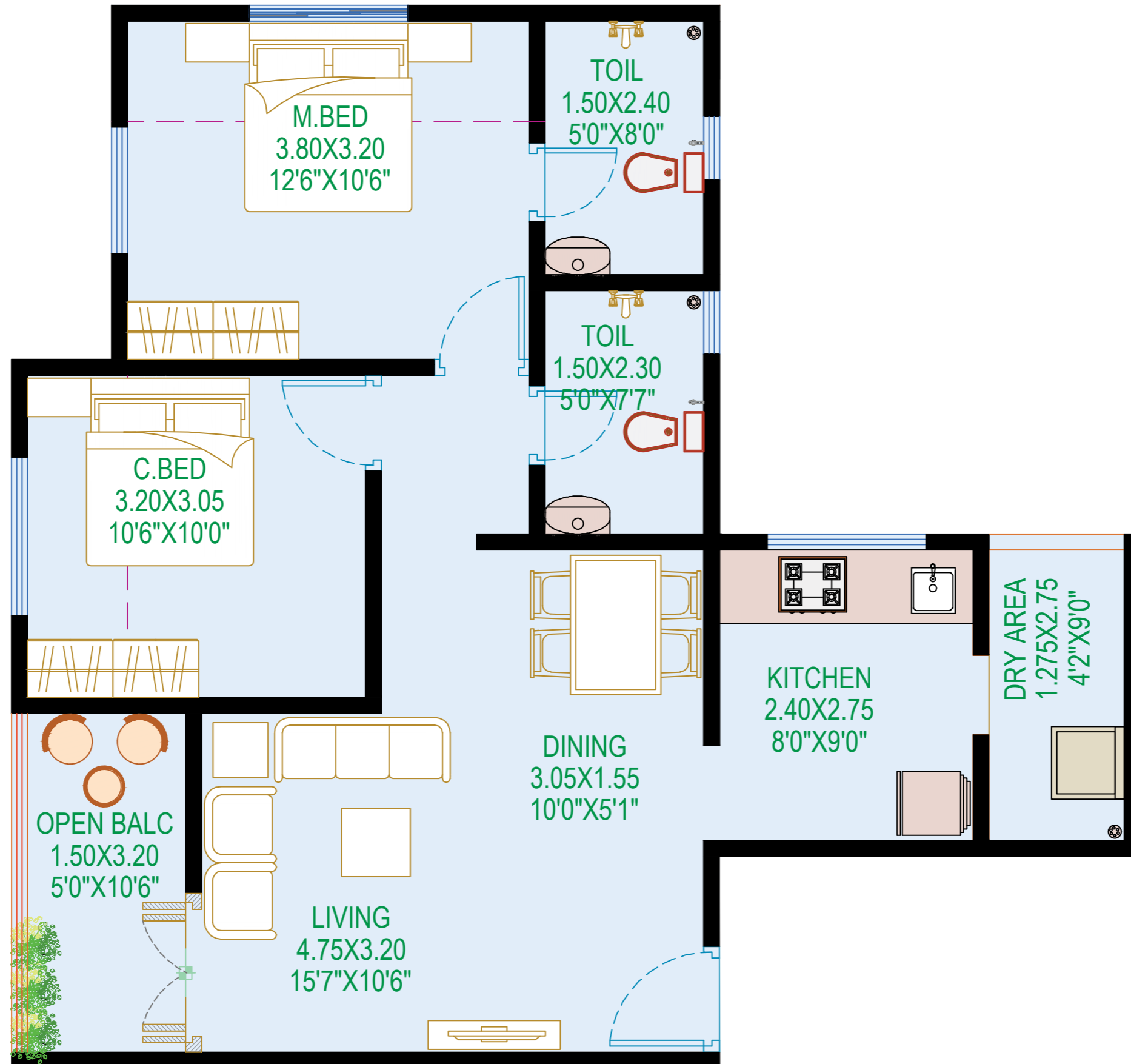


KEY DISTANCES

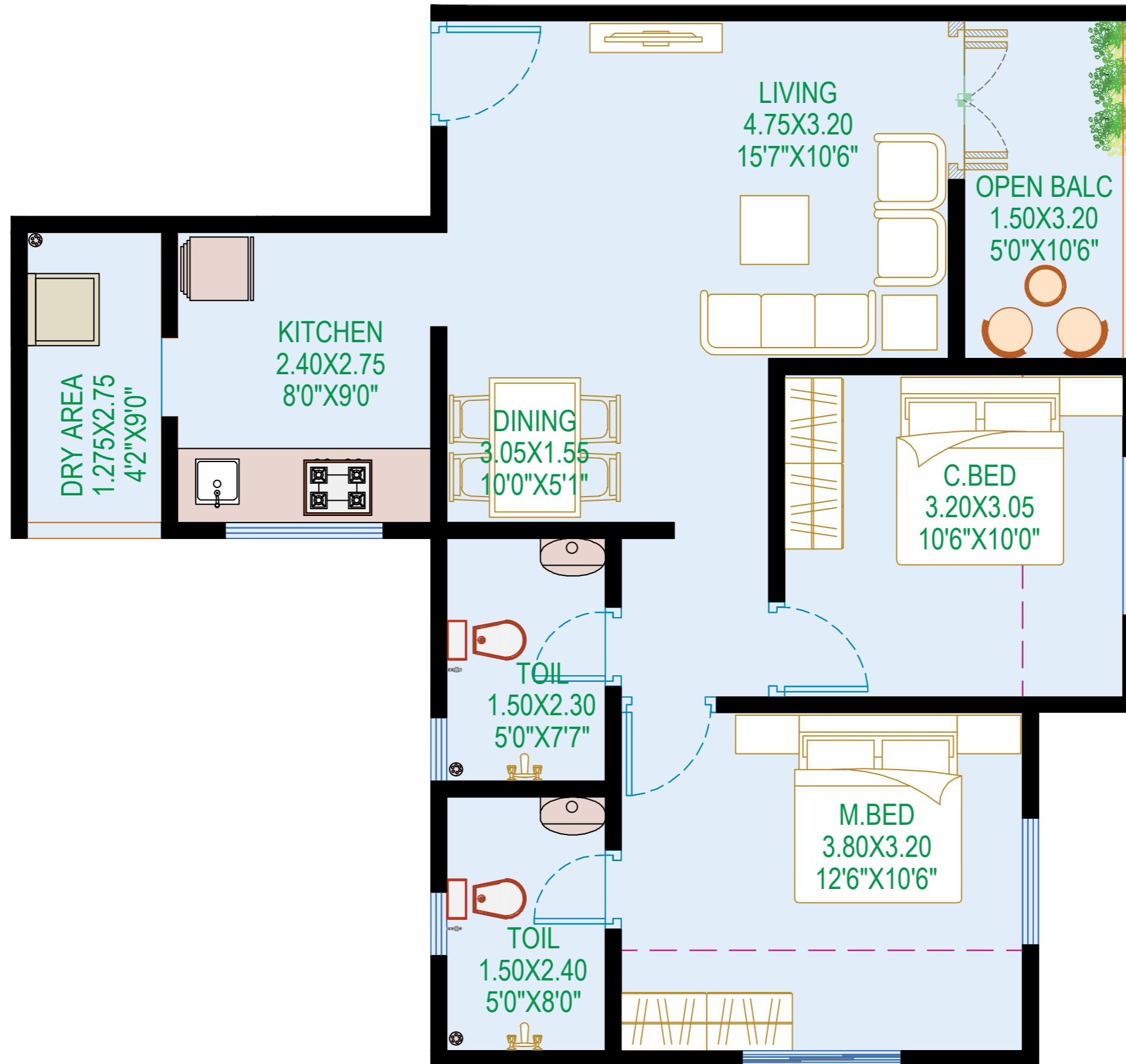
» HP Petrol Pump	2.0 km
» Life Care Hospital	2.1 km
» JSPM	3.4 Km
» Akshara International	3.5 km
» Dr. D Y Patil College	3.6 km
» Indira College	4.0 km
» Indira National School	4.2 km
» Decathlon	4.5 km
» Vision One Mall	4.5 km
» Sayaji	5.8 km
» Upcoming World Trade Center	2.5 km
» Upcoming Panchshil IT Park	5.0 km
» Phoenix Mall of Millennium	6.4 km



ODD UNIT PLAN

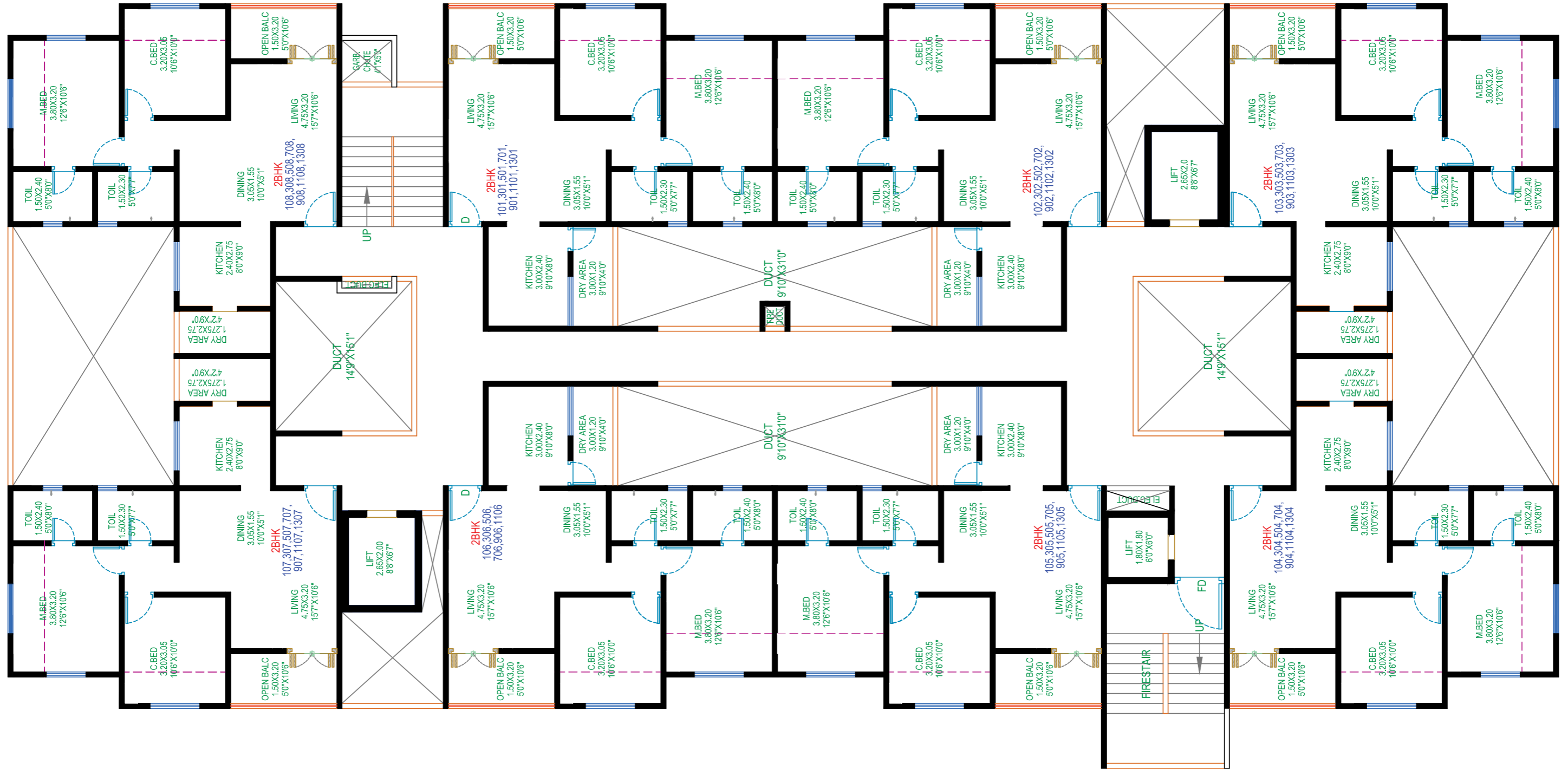


ODD UNIT PLAN

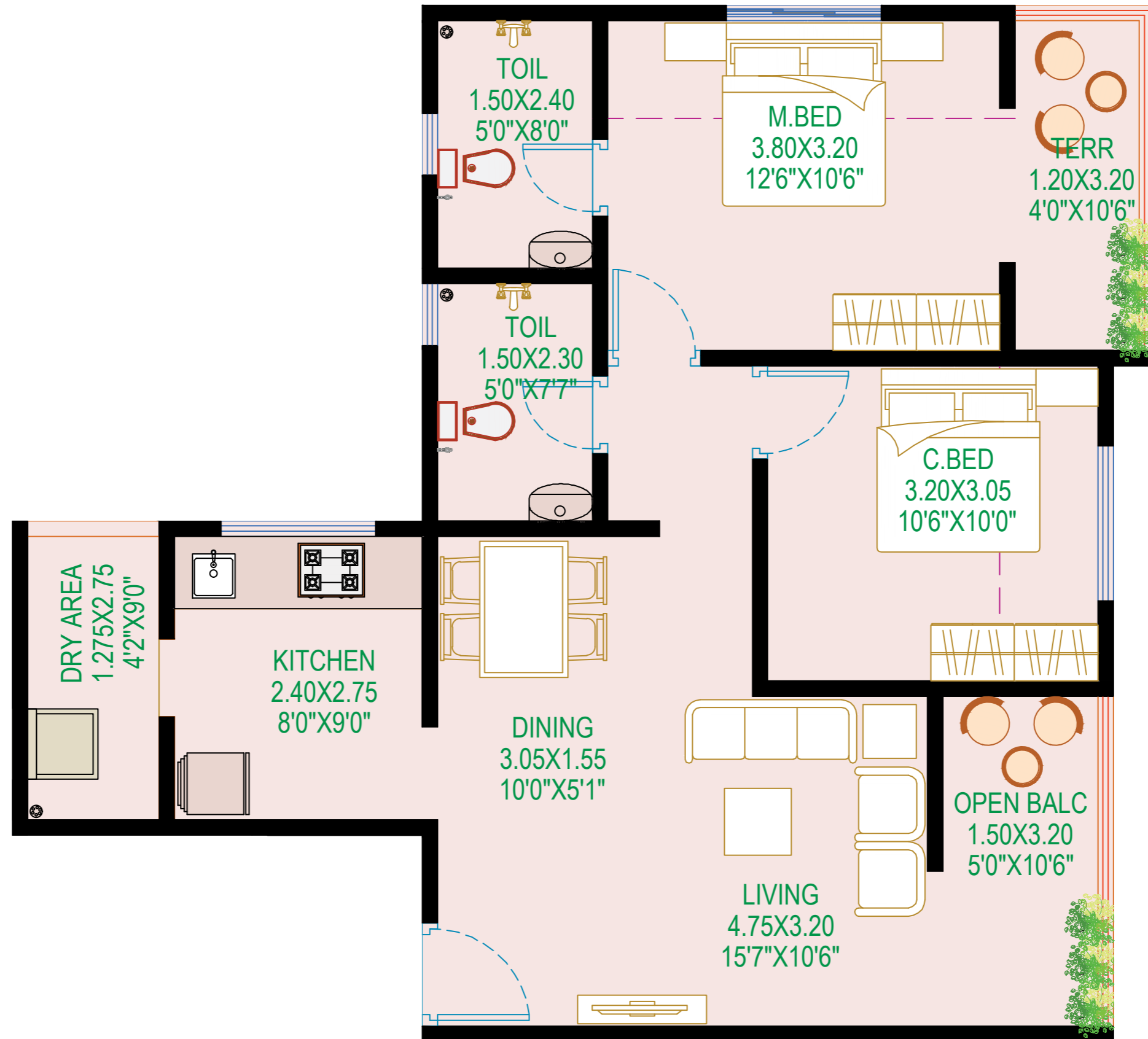


ODD FLOOR PLAN

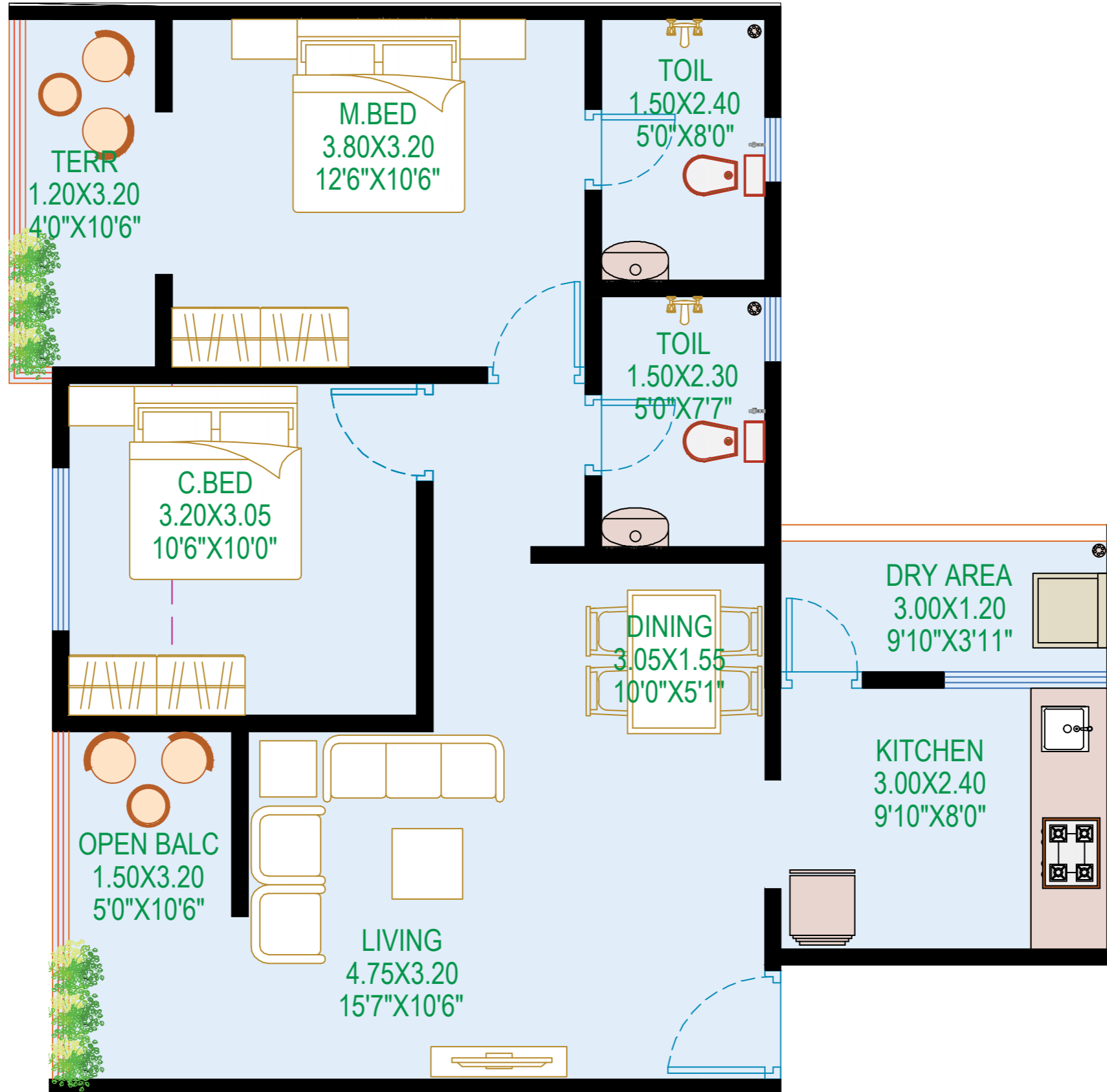
TYPICAL 1ST, 3RD, 5TH, 7TH, 9TH, 11TH & 13TH FLOOR PLAN



EVEN UNIT PLAN

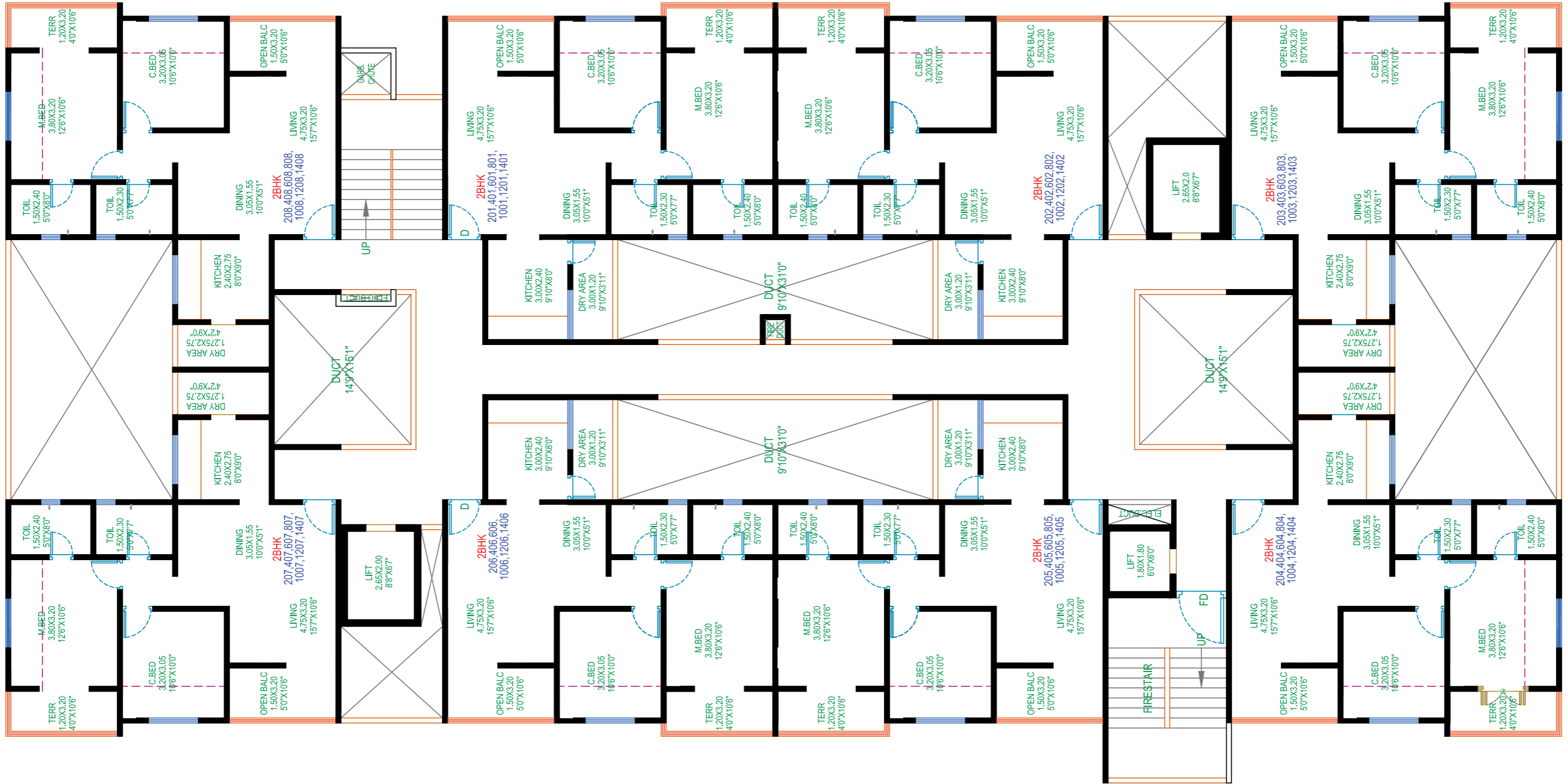


EVEN UNIT PLAN



EVEN FLOOR PLAN

TYPICAL 2ND, 4TH, 6TH, 8TH, 10TH, 12TH & 14TH FLOOR PLAN



OUR PORTFOLIO

Sai Miracle
Rahatani

Sai Pearl
Pimple Saudagar

Sai Marigold
Pimple Saudagar

Sai Platinum
Pimple Saudagar

Sai Orchid
Pimple Saudagar

Sai Arcade
Wakad

Sai Heritage
Pimple Gurav

Sai Highness
Pimple Saudagar

Sai Avenue
Pimple Saudagar

Sai Dreams
Pimple Saudagar

Sai Angan
Pimple Saudagar

Sai Bliss
Punawale

Project By:



Site Address:

Survey No. 21/11, Kate Wasti, Punawale, Pune - 411 033.

E-mail: sales@saigrace.co.in | www.saigrace.co.in



MAHARERA NO.: P52100051626 | <https://maharera.mahaonline.gov.in>



Disclaimer: This brochure is purely conceptual and not a legal offering. The developer reserves all the rights to add, delete, alter any detail, specifications, elevation mentioned herein. All units are unfurnished, furniture wherever shown is for illustrative purpose only. No furniture is to be supplied to the purchaser by the developer unless otherwise mentioned. All images, unless otherwise indicated are used for illustrative purpose only.