

RISHABRAJ
PRIDE

LUXURY HAS A NEW NAME

RISHABRAJ
PRIDE

At Rishabraj Pride, we put you in charge of who you become. In the midst of a teeming suburbia, here's your own little exclusive retreat in the form of a fine-looking edifice of stilt plus 9 storeys.

Come home to beautifully appointed 1 and 2 bhk abodes that create the perfect composition with contemporary amenities and luxuries like gym and rooftop garden. Located in Dahisar West, connectivity is a virtue here with easy access to S.V Road, and the up and coming metro stations on Link Road and W.E Highway. Also in close proximity are the nearest railway station and vital services like educational, medical and religious centres.

WHERE OPULENCE
MEETS EXCELLENCE...



Make every moment count at an address where each space is designed to reflect your dreams, fashion enchanting memories and celebrate all your milestones. Revel in the ease that comes from having exclusive amenities and conveniences crafted to satisfy your every need and mood. Marvel at a lifestyle that leaves your head high and heart full with the wonder and comfort of it all.



Internal Amenities

- Vitrified flooring in entire flat.
- Colour anodized Aluminium sliding windows with tinted glass and marble frame.
- M. S. Safety Grills on external windows in Living and Bedroom.
- Granite double kitchen platform with Stainless steel sink.
- Concealed copper wiring with Goldmedal switches and accessories with E.L.C.B.
- Designer bathroom with anti skid ceramic tile flooring.
- Concealed plumbing with superior quality sanitaryware and Jaquar fittings or any similar brand.

External Facilities

- Designer Entrance Lobby
- Well Equipped Gymnasium
- High speed elevators of a reputed brand.
- Chequered tile / pavers in the entire compound.
- Ample Car Parking.
- CCTV surveillance in common area.
- Advance fire fighting system as per approvals.
- Earthquake resistant construction.

**THE SILVER LINING
TO HAPPINESS**



ELEGANTLY DESIGNED ENTRANCE LOBBY



GYMNASIUM



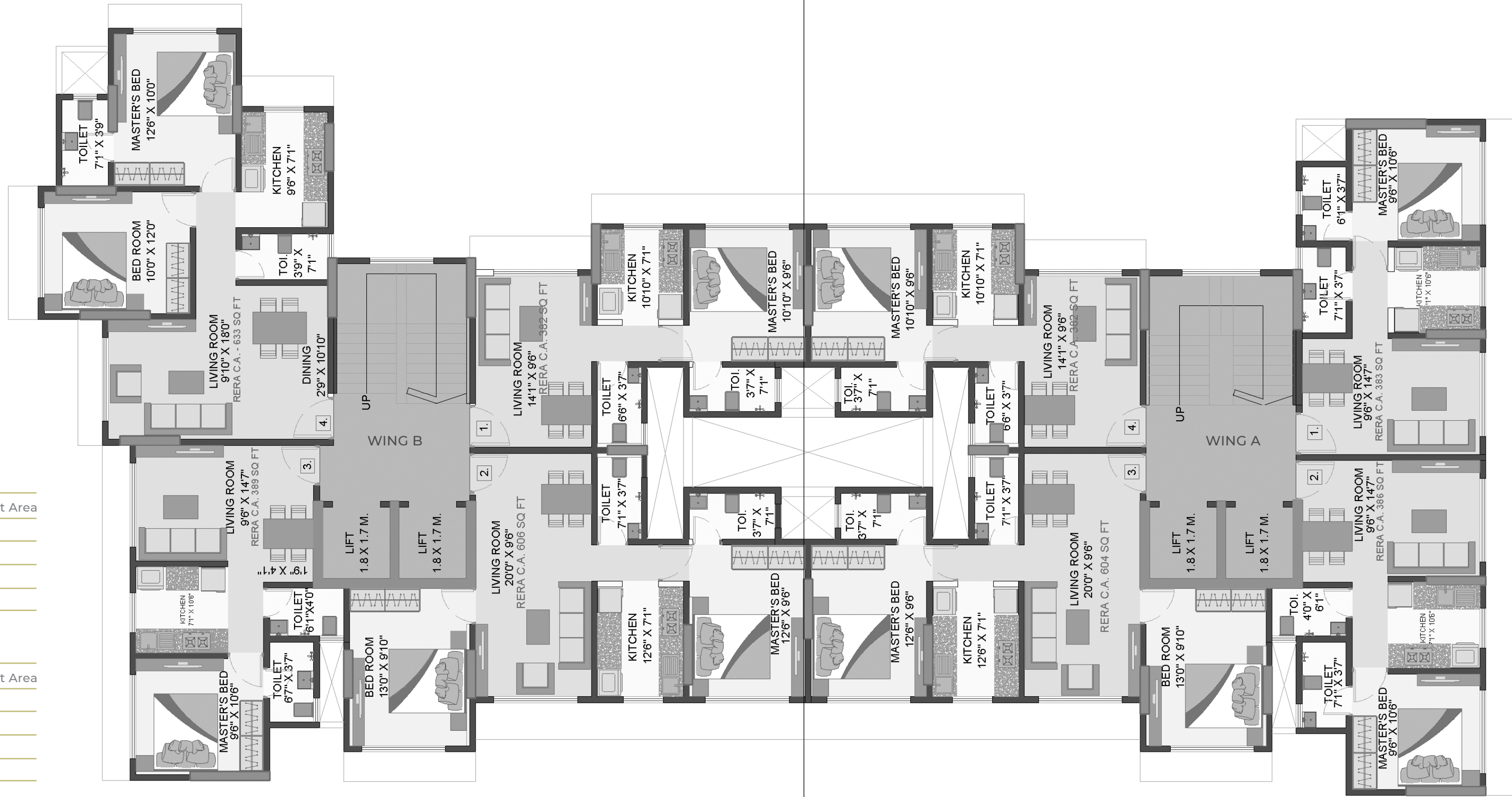
TURF

WING A

Flat No.	Rera Carpet Area
1	383 sq. ft
2	386 sq. ft
3	604 sq. ft
4	382 sq. ft

WING B

Flat No.	Rera Carpet Area
1	382 sq. ft
2	606 sq. ft
3	389 sq. ft
4	633 sq. ft





ARTIST'S IMPRESSION

WHERE HAPPINESS EXTENDS BEYOND FOUR WALLS



ARTIST'S IMPRESSION



ARTIST'S IMPRESSION

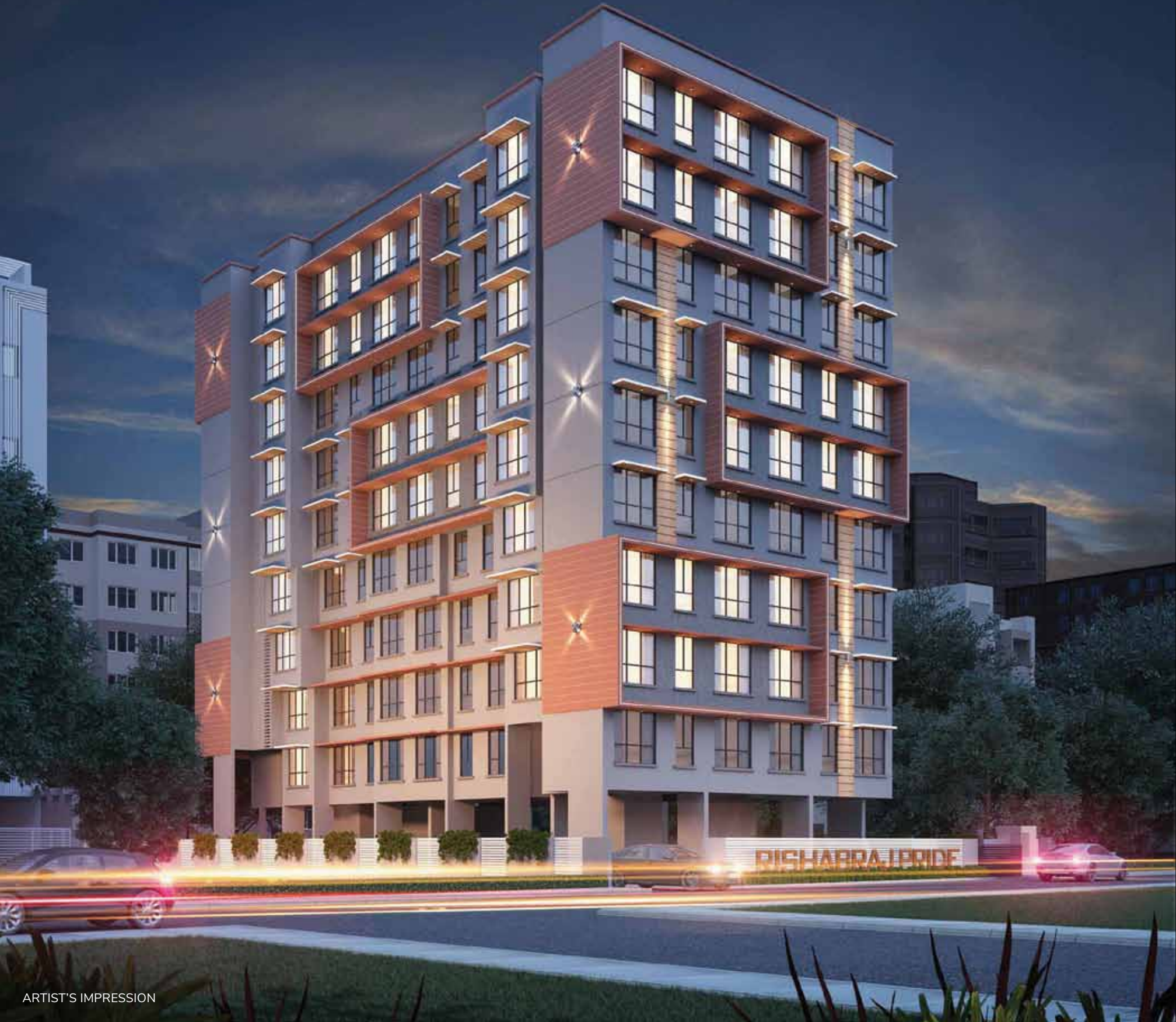


ARTIST'S IMPRESSION



ARTIST'S IMPRESSION

Come rejoice in an atmosphere that adds value and simplicity to the art of healthy living. Expansive and lovingly curated terrace garden with turf and sit-out areas for kids that promise to chronicle many a hours spent here, basking in the pure joy and awe of it all.



ARTIST'S IMPRESSION



H. RISHABRAJ

BUILDERS & DEVELOPERS

ENERGIZING HAPPINESS!

www.hrishabraj.com

OTHER ONGOING PROJECTS



RISHABRAJ AGNEL - Borivali W
MahaRera No. P51800030530



RISHABRAJ RAMESHWAR - Borivali W
MahaRera No. P51800030723



RISHABRAJ SURAJ - Borivali W
MahaRera No. P51800029277



RISHABRAJ MONALISA - Borivali W



RISHABRAJ ASHISH - Borivali W
MahaRera No. P51800007607



RISHABRAJ ELEGANCE - Kandivali W
MahaRera No. P51800024456



LET'S RESTART

COMMITMENTS UNCOMPROMISED

AN INITIATIVE BY H. RISHABRAJ GROUP

www.letrestart.com

The innovative genius of H Rishabraj gave birth to - Let's Restart, the solution provider for delayed and stalled projects.



RISHABRAJ PRIDE

Hospitals within 700 m

Schools within 500 m

Highway 1.5 km

Thakur Mall 3.5 km

Link Road 700 m

S.V. Road 100 m

Jain Temple 500 m

Railway Station 100 m

Datt Mandir 200 m

Site Address : Rishabraj Pride, 27, Mhatre Wadi, Dahisar West, Mumbai - 400068

M : 9324904545 / 99675 96611

A Project by



H. RISHABRAJ

BUILDERS & DEVELOPERS

ENERGIZING HAPPINESS!

Corporate Address : 103, Jai Tirth, Daulat Nagar, Road No 10, Borivali (East), Mumbai 400066

Ph : 022 2893 4545 | 2893 4747 | **E :** sales@hrishabraj.com | www.hrishabraj.com

Developers : KR KUMARI | NDU STRIE S LTD. **Regd. Office :** 101, Raj Bhavan, Daulat Nagar Road No. 9, Borivali (East), Mumbai 400066



MahaRera number : P51800031144 (<https://maharera.mahaonline.gov.in>)

A Proud Member of



**BRIHANMUMBAI
DEVELOPERS ASSOCIATION**

Disclaimer : The plans, specifications, images and other details herein are only indicative and the developer's reserve their rights to change any of all of these in the interest of the development. This printed material does not constitute an offer and or contract any type between the developer and the recipient. Any purchase of this development shall be governed by the terms and conditions of the agreement for sale/ lease entered into between parties and no detail mentioned in this printed material shall in any way govern such transaction.