

Aveza

GATEWAY TO AN ICONIC LIFESTYLE

MULUND EAST, MUMBAI

INTRODUCTION

UNFOLDING A NEW WORLD OF ICONIC LIFESTYLE.

We need more than just dreams to make our life larger.

We need an unparalleled collection of bespoke innovations, handpicked for its exclusivity.

We need our desires to bask in the magnificence it offers.

We need a place where we can create our own world, our own way of life.

Call it a palace, or a dream enwrapped with a touch of reality. Wake up with the golden rays of sun touching your feet, and end the night with a kiss of the moon light. Juxtapose these experiences with opulent expressions of an avant-garde lifestyle, with 2 & 3 bedroom plush residence and exclusive penthouses assembled in six elegant towers, we unfold an architectural splendour spread over approximately 8.5 acres that redefines magnificence in each and every step you take.

Welcome to Aveza-The gateway to an iconic lifestyle.

THE LOCATION

AN ICONIC ADDRESS, ABOVE THE REST.

At Aveza, lavish comforts, enchanting scenery and unparalleled excellence blend into one dynamic experience. And it gets even better with the location. Situated in the spacious confines of Mulund, here you can change the way you look at your world and embark onto ecstasy, where intoxicating breezes magically lead to a day full of splendour.

AVEZA, THE MEANING

A delicate interlacing of both the extravagant as well as the majestic, Aveza, meaning "the gateway", dates its antecedents in ancient Sanskrit. A celebration of indulgence in a picture perfect location, here, frugality is an alien concept and the fulfilment of desire, a mandate.

CLEAR UNINTERRUPTED VIEW

In a city of cement and brick, it's a pleasure to find sanctuary in a place plush with nature and comfort. Designed to break free from conventional living spaces, Aveza stands towering above the cityscape, just so you can too. Atop your perch on Aveza, find a bird's eye view of the world and let the concrete jungle that entwines the city become a part of the view itself. Feel the clouds at your feet and let the mist flow in, caressing your walls.

LOCATION MAP



- - - - Metro Line
 — Express Highway
 — Bridge
 - - - - Link Roads
 - - - - Railways
 — Main Roads
S Schools
M Malls
A Project Site



Eastern Express Highway: Close proximity to the Eastern Express Highway and Eastern Freeway.



The Phase-1 Metro Project app. 10 minutes away.



The Four Link roads connecting the Western and Eastern suburbs.



The Mulund-Airoli Bridge, that connects to Navi Mumbai in about 30 minutes.



Domestic Airport at approx. 35 minutes.
International Airport at approx. 40 minutes.

FEATURES & AMENITIES

- Imported marble flooring
- Sundecks in living room and master bedroom
- Bamboo / Engineered wooden flooring in master bedroom
- Wooden finish vitrified tiles in other bedrooms
- Anti-skid vitrified flooring in all washrooms, kitchen and utility
- Granite top W/B Counter
- Dado up to 2 feet above kitchen counter
- High speed elevators
- CCTVs and Dome cameras at ground levels, entrance lobbies and parking levels
- Multi tiered security system
- Video door phone connected to main entrance lobby
- Intercom facility
- Public address system in all parking levels and lift lobbies
- Fire alarm system in all parking levels and lift lobbies
- Modular kitchen
- Split air-conditioners in living, dining and bedrooms
- Premium sanitary ware and CP fittings in all bathrooms
- Double height air-conditioned entrance lobbies
- D.G. back up supply for common areas
- Sky bridge
- 3.5 acre of landscaped podium
- Observatory decks

GREEN FEATURES

- Solar powered street lights
- Rain water harvesting
- STP treated water for landscaping, etc.
- Ample open space with greenery
- Garbage chutes



LIFESTYLE FACILITIES

SKY BRIDGE

One elevated sky bridge connects the high rise towers, making it both, a triumph of luxury as well as class-leading engineering. So whether your interest lies in literary pursuits, or recreational, you will indulge in them with new vigour, as you watch the panoramic views of the blue skies.

15th Floor:

- Reading nook
- Seating corner
- Chess area
- Study centre
- Rubberised play mat with seating

36th Floor:

- Seating corner
- Games area
- Cafe tables lookout seating
- Timber yoga deck

PODIUM TOP (WITHIN TOWER FOOT PRINT):

- Tot lots with parent's seating
- Senior's exercise area
- Meditation area
- Seating and reading areas
- Games area
- Seating area

GROUND FLOOR:

- Entry guardhouse with signage wall and water feature
- Dry rock garden seating areas
- Tower entry signage and speciality paving at drop-offs
- Vertical creeper planting features



Image is for representation purpose only.



Image is for representation purpose only.

LIFESTYLE FACILITIES

THE CLUBHOUSE

The exquisite clubhouse spread across 60,000 sq.ft. approx. is a wonderful combination of recreation & comfort, resulting in a perfect lifestyle option for those who want the opportunity to experience & enjoy the good life.

- Artificial golf putting on clubhouse terrace
- Mini theatre
- Badminton court
- Squash courts (2 nos.)
- Indoor games room - Carom, Chess, Cards, etc.
- Table tennis room
- Pool / billiards room
- Kids play room
- Health spa
- Lounge
- Reading zone
- Cafe
- Gymnasium
- Locker rooms - changing, shower, rest rooms
- Yoga / Aerobics room
- Party decks



PODIUM TOP AMENITIES

- Lap pool with shallow reclining ledges and infinity edge
- Leisure pool with stepped planters and seating ledge
- Children's pool with water spouts
- Trellis-covered pool deck lounge area
- Pool juice bar
- Tennis court
- Basketball half court
- Children's playground with stepped berm
- Event lawn with bermed plantings
- BBQ pits with seating
- Skating rink
- Topiary garden with seating
- Amphitheatre
- Aroma garden with seating
- Senior's garden seating area
- Overlook garden with trellis
- Sunrise yoga deck
- Dry stone gardens
- Central water feature with spouts
- Lush tropical planting
- Approx. 1.5 m wide jogging track looping around the project for approx. 0.5 km.

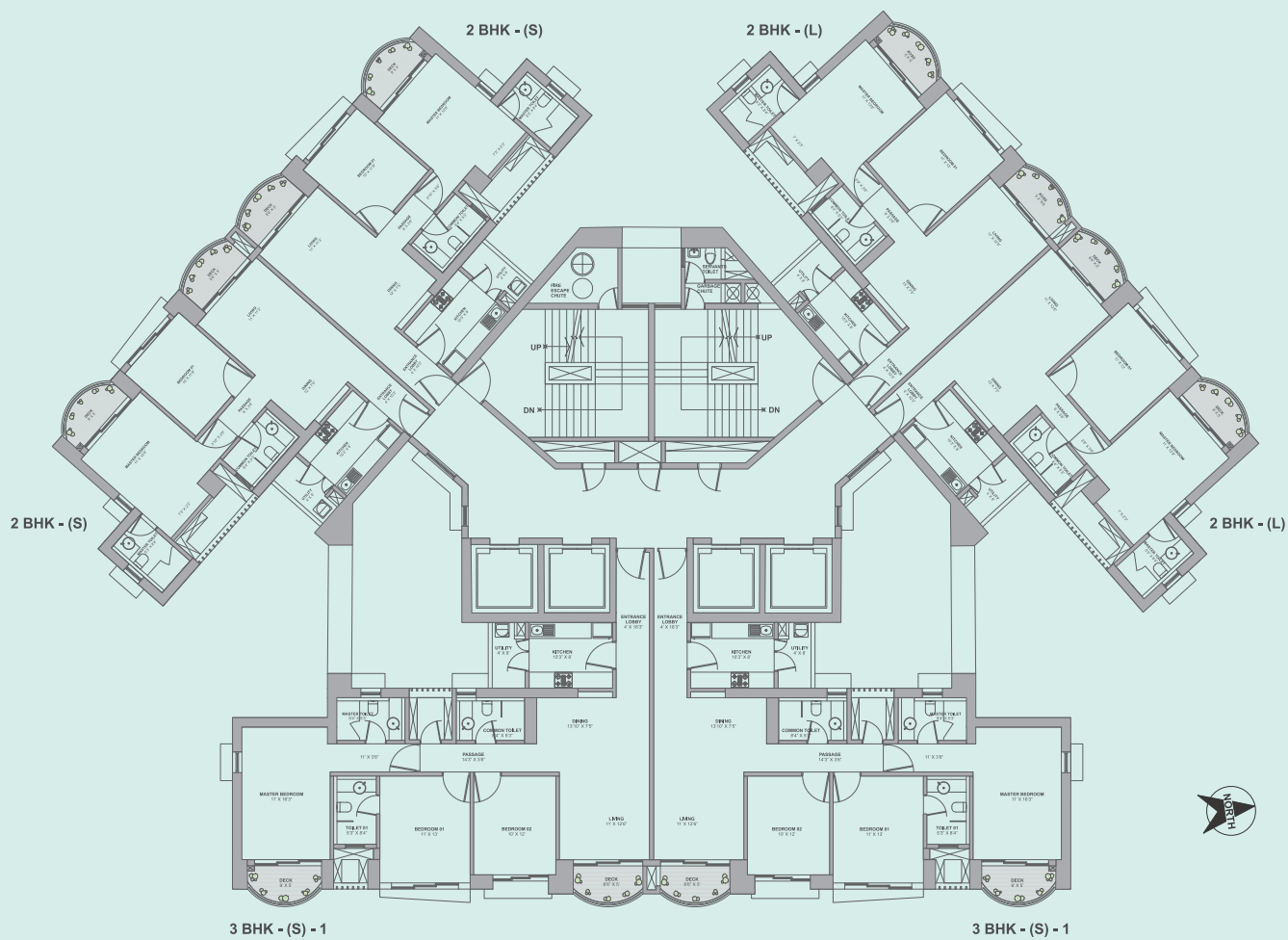


CLUBHOUSE



FLOOR PLANS

Tower A : Typical Floor Plan

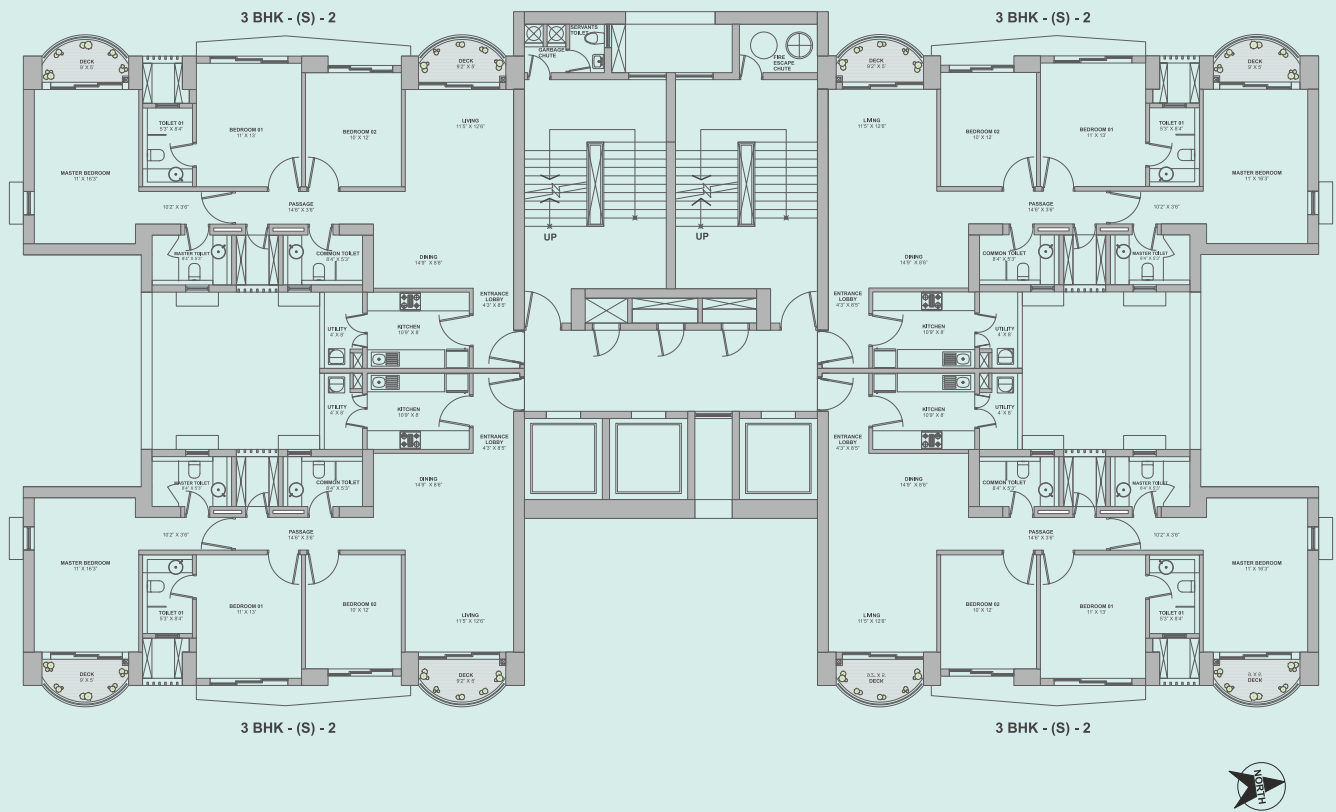


Unit Type	Carpet Area (in Sq.M.)	Carpet Area (in Sq.Ft.)
2 BHK - (S)	79.55	857
2 BHK - (L)	85.35	919
3 BHK - 1	110.49	1190

Measurements are approx and subject to minor variations.

FLOOR PLANS

Tower B : Typical Floor Plan

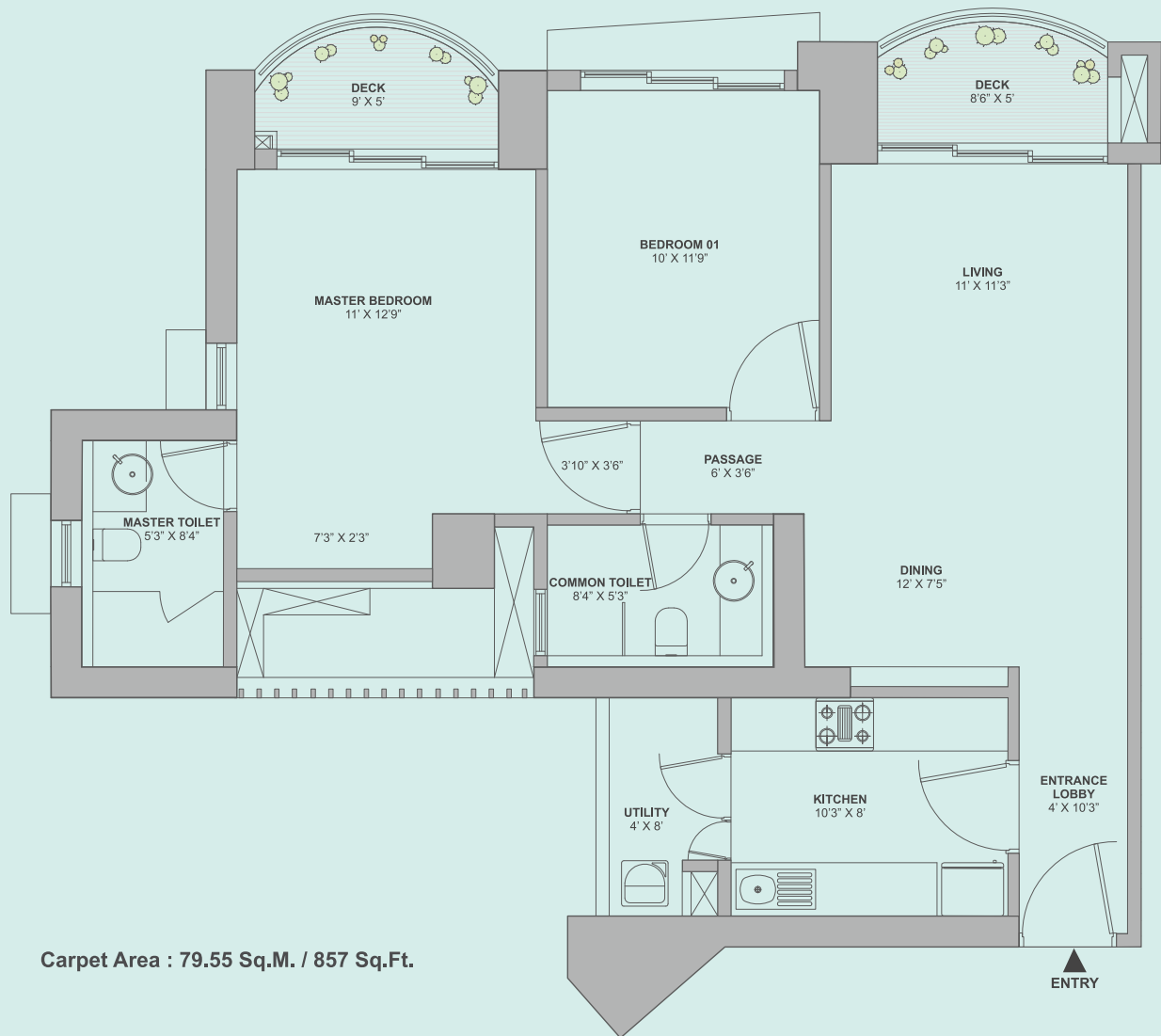


Unit Type	Carpet Area (in Sq.M.)	Carpet Area (in Sq.Ft.)
3 BHK - 2	110.15	1186

Measurements are approx and subject to minor variations.

UNIT PLANS

Typical Unit Plan 2 BHK – (Small)

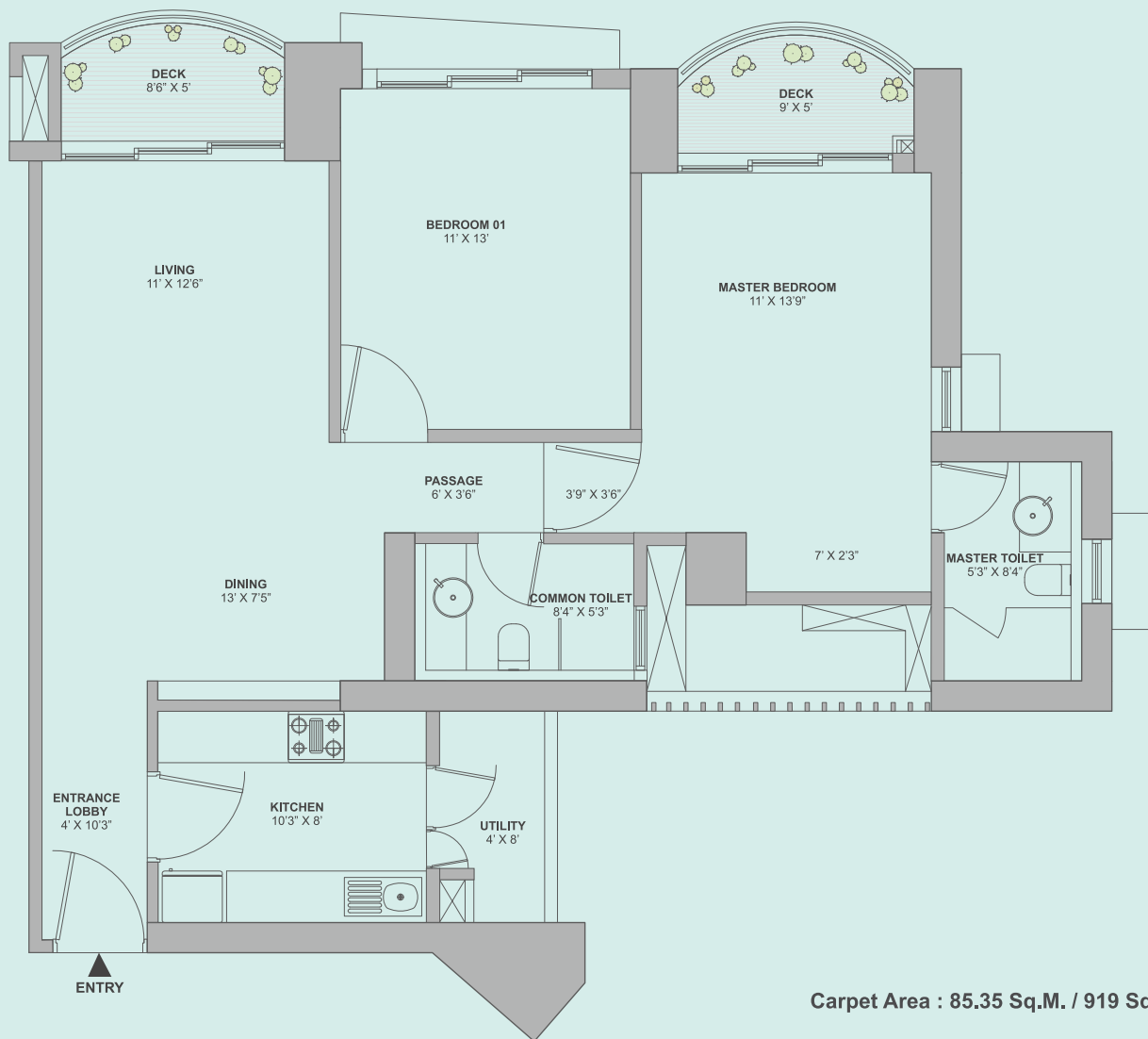


Carpet Area : 79.55 Sq.M. / 857 Sq.Ft.

Measurements are approx and subject to minor variations.

UNIT PLANS

Typical Unit Plan 2 BHK – (Large)

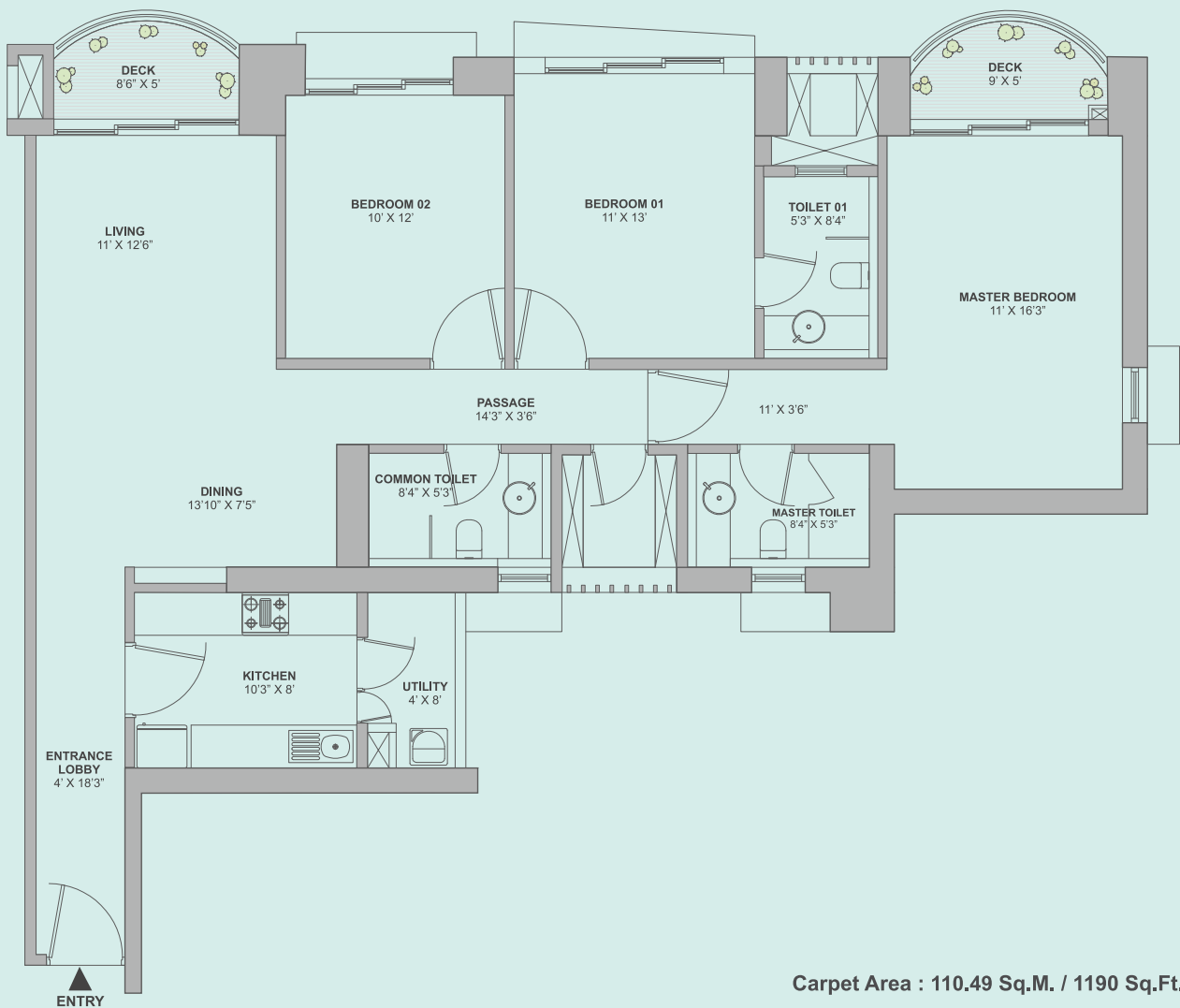


Carpet Area : 85.35 Sq.M. / 919 Sq.Ft.

Measurements are approx and subject to minor variations.

UNIT PLANS

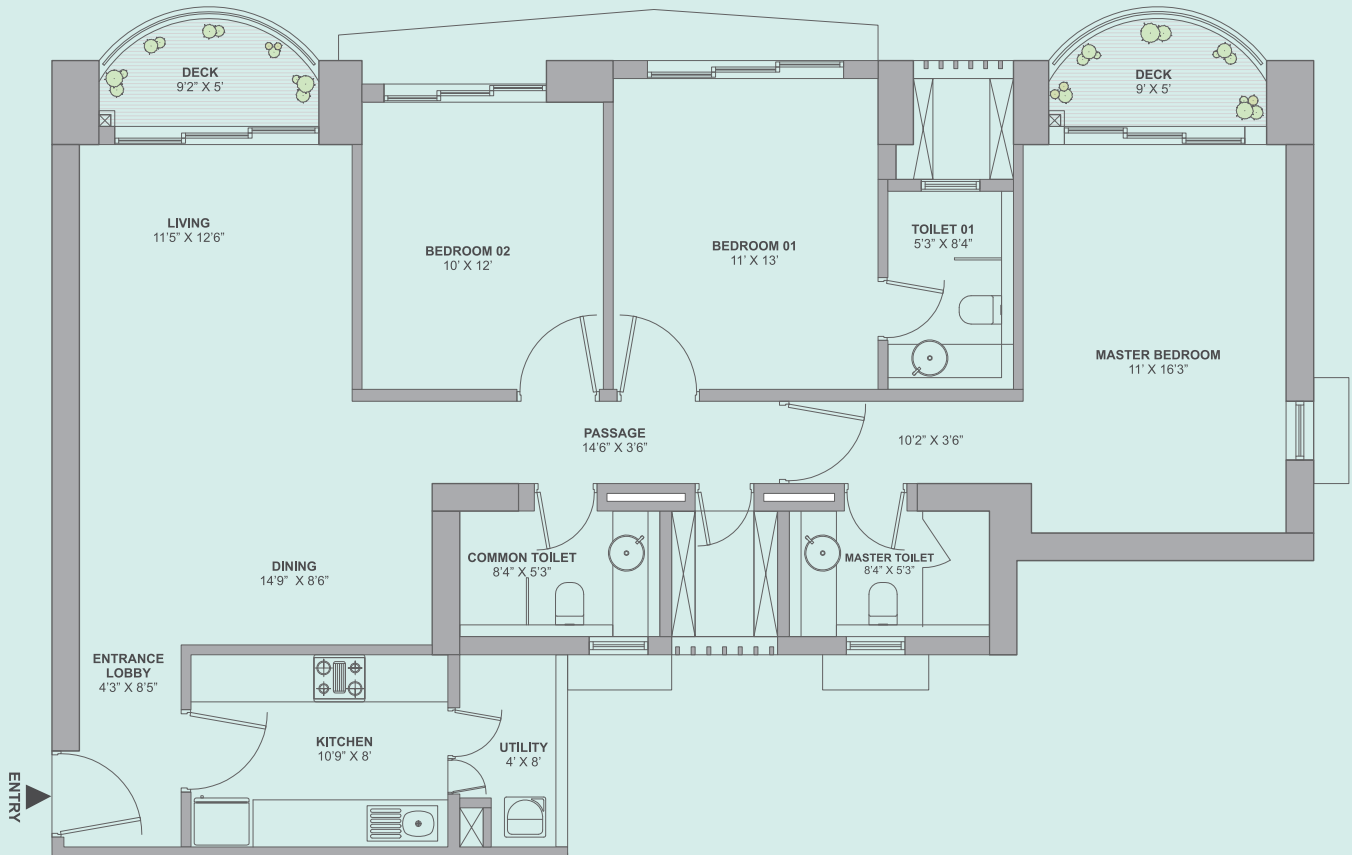
Typical Unit Plan 3 BHK – 1



Measurements are approx and subject to minor variations.

UNIT PLANS

Typical Unit Plan 3 BHK – 2



Carpet Area : 110.15 Sq.M. / 1186 Sq.Ft.

Measurements are approx and subject to minor variations.

Aveza

GATEWAY TO AN ICONIC LIFESTYLE

CALL US AT - 1800 3004 8282

or

VISIT US AT - www.tatahousing.in/aveza

SITE ADDRESS

Aveza Lounge, New PMGP Co-Operative Housing Society Ltd., Navghar, Mulund (East), Mumbai - 400 081.

DUBAI ADDRESS

1820, Burjuman Business Tower, Burjuman, Po Box: 121828, Dubai, UAE Contact No.: +971565914077

REGISTERED ADDRESS

12th Floor, Times Tower, Kamala Mills Compound, Senapati Bapat Marg, Lower Parel, Mumbai - 400 013.