



**AV CRYSTAL  
TOWER**

**Madhuban Township**

**1 BHK  
सिर्फ**

**₹ 25  
LAKH में**

**Vasai (E)**

**Surakshit Payment  
Plan Ke Saath**

**Pay just 15% now**

MahaRERA Registration



No. P99000027600



**AV CRYSTAL  
TOWER**

 **Madhuban Township**



# About **Project**

Located in the heart of Vasai East, AV Crystal Tower is a part of Mumbai's largest township. Vasai East is known for offering a good lifestyle for all those who reside here. This makes it a coveted location to buy your first home.

The location advantages of living here are many. You will be minutes away from the closest railway station, bus stop, highway, RTO office, range office and various malls. This is not it.

Vasai East houses a plethora of schools and colleges to ensure that your children get the level of education they deserve to become the leaders of tomorrow. State of the art hospitals in this region ensure that healthcare is of paramount importance. The restaurant and theatres here offer unlimited entertainment whenever you want to take a quick break from your work.





1ST, 3RD, 5TH, 7TH & 9TH FLOOR PLAN

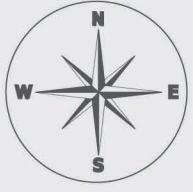
WING - A

WING - B

1ST, 3RD, 5TH, 7TH & 9TH FLOOR PLAN

- 18mtr. Road -

- 30mtr. Road -





## External **Amenities**

- Decorative Entrance Lobby
- Children's Play Area
- Parking Available
- Two Lifts In Each Wing With Generator Backup
- Municipal Water Connection
- CCTV Cameras In Entrance Lobby
- Elegant Designer Entrance Gate With Security Cabin





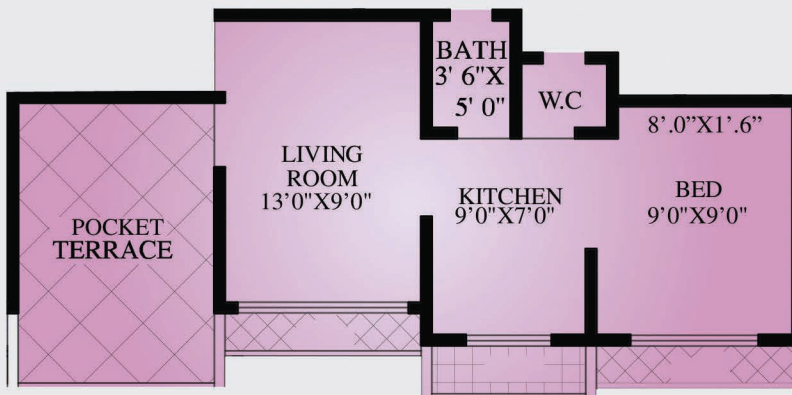
**1 BHK**

Type	1 BHK
Carpet	333
Flower Bed Dry Balcony	57
Total Usable Area	390



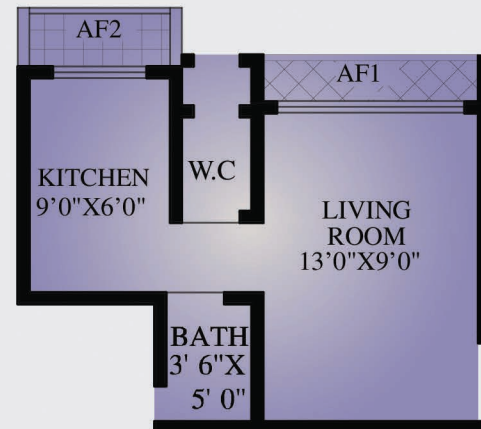
**1 BHK**

Type	1 BHK
Carpet	324
Flower Bed Dry Balcony	57
Total Usable Area	381



**1 BHK With Terrace**

Type	1 BHK
Carpet	331
Flower Bed Dry Balcony	172
Total Usable Area	503



**Studio**

Type	Studio
Carpet	230
Flower Bed Dry Balcony	29
Total Usable Area	259

# Internal Amenities



- P.O.P Design Ceiling In Living Room
- Plastic Paint On Internal Walls
- 100% Acrylic Waterproof Anti Fungal Paints On External Walls
- Marbonite Tile Flooring With Skirting In All Rooms
- Anti Skid Flooring In Bathrooms
- Full Height Glazed Tiles In Bathrooms
- Tile Up To Beam Level In Kitchen
- Fine Finish Granite Platform In Kitchen
- Stainless Steel Sink & Quality Kitchen Trolley
- Anti Corrosive CPVC Pipeline
- Concealed Plumbing With Quality Sanitaryware
- C.P. Fittings Of Good Quality
- Open Wall Mixer & Hand Shower Of Good Quality
- Fancy Wash Basin & 500 Ltr. Water Tank Over Loft



# Location **Advantages**

AV Crystal Tower is located at such a place that allows easy access to all that you may have need for.



## **Railway Station**

Distance: 8 min



## **Bus Stop**

Distance: 3 min



## **Highway**

Distance: 15 min



## **RTO Office**

Distance: 5 min



## **Range office**

Distance: 5 min



## **State Bank Of India**

Distance: 5 min



## **Malls**

### **Dattani Square Mall**

Distance: 10 min

### **Dream Mall**

Distance: 7 min





## Schools/Colleges in Vasai East

### Vidya Vikasini School (ICSE)

Distance: 5 min

### SKC School

Distance: 5 min

### Bhausahab Vartak Polytechnic

Distance: 7 min

### Don Bosco High School & Junior College

Distance: 8 min



## Restaurant

### Pizza Corner

Distance: 1 min

### Celebrity Family Restaurant

Distance: 5 min

### Ambarsariya Desi Punjabi Khana

Distance: 5 min



## Hospitals in Vasai East

### Platinum Hospital

Distance: 7 min

### Indradhanush Hospital

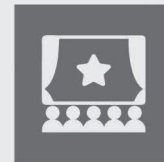
Distance: 4 min

### Vinayaka Hospital

Distance: 5 min

### Navneet Hospital

Distance: 7 min



## Cinemas

### Carnival Cinemas

Distance: 5 min

### BMM Complex

Distance: 5 min

### Broadway Multiplex Theater

Distance: 2 min



# COMPLETED PROJECTS



**M.Amin Tower Nalasopara (W)**



**Crystal Residency Nalasopara (E)**



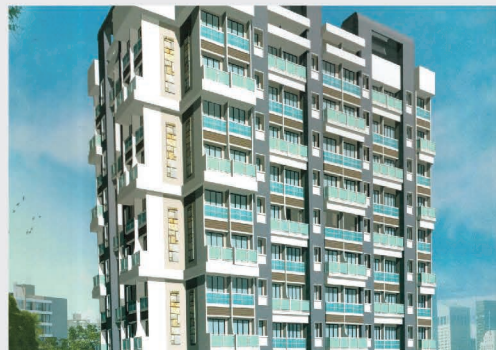
**Crystal Residency Nalasopara (E)**



**Orange Height Phase - II  
Nalasopara (W)**



**Orange Height Phase I  
Nalasopara (W)**



**Shree Durga Nagar Complex  
Nalasopara (E)**



**White Hills  
Vasai (E)**

# ONGOING PROJECTS



**Unity Estates & Developers**



**Crystal Empire**  
(E Wing Completed F Wing Ongoing)  
Nalasopara (E)



**Crystal Tower** (Zenith Developers)



**Durga Nagar**  
(E Wing Completed, F Wing Ongoing)

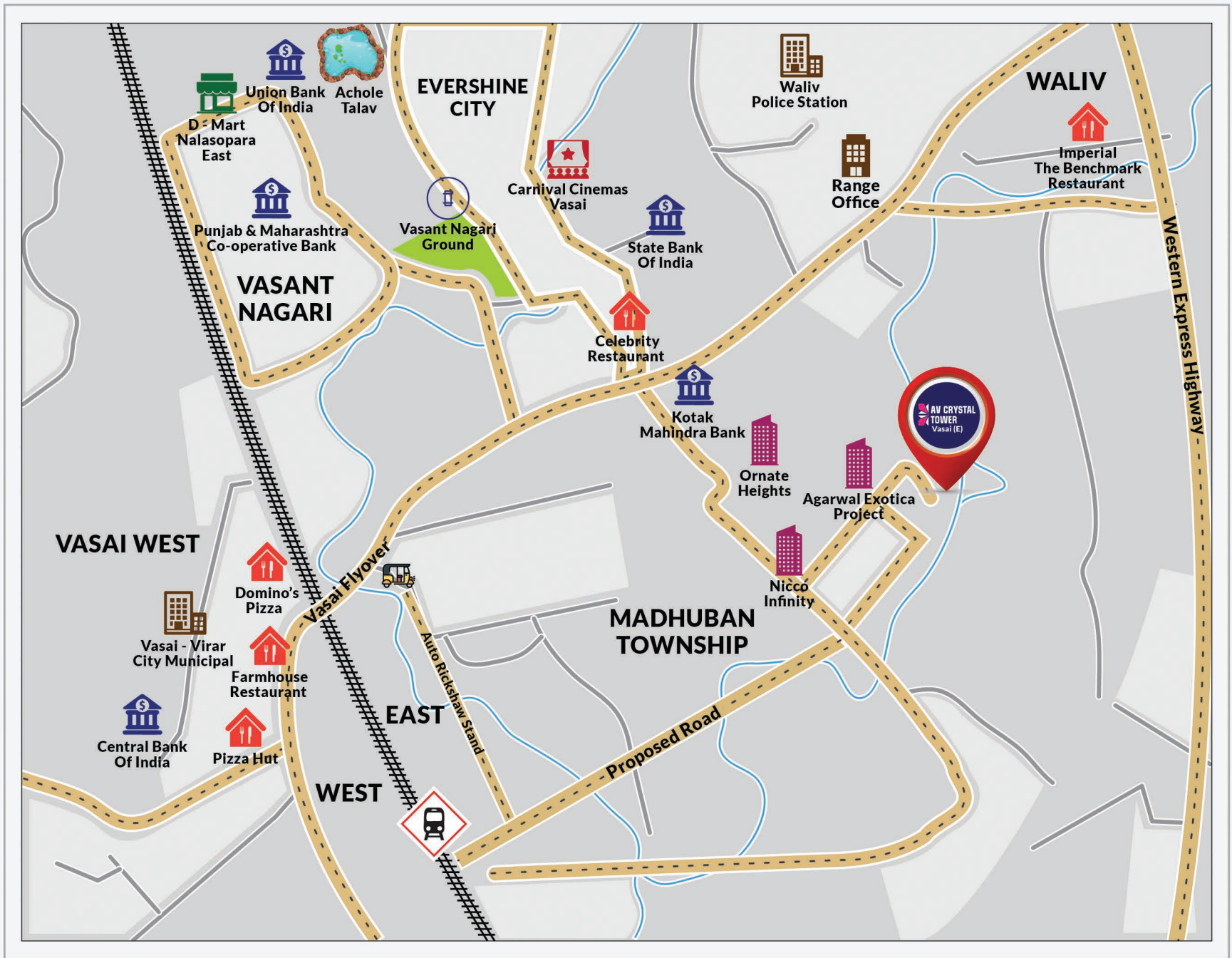


**New Era** (Palghar)



**Paramount Enclave**  
Palghar (W)





**Site Office :**

Survey No, 62/1, 63/2/1 & 64/3 LWC Building No. 2,  
Sector No. 2, Near Sapphire Building, Madhuban Township,  
Yashwant Smart City, Gokhiware, Vasai - 401 208.

**Head Office :**

Shop No 41 & 42, Sanskruti Apt, New Link Road, Opp.  
OBC Bank, Nalasopara East 401 209.

**Hotline No : 76666 44044**

Project By:

Marketed By:



All layouts, locations, plans, specifications, designs, elevations, features, amenities, facilities and services mentioned are indicative of the kind of development proposed and its finality is subject to the approval of the respective authorities or as required by the Promoter/Developer in the interest of continuing improvement, without prior notice or obligation. Tolerance of +/- 3% is possible in unit areas on account of design and construction variances. The pictures and perspective views of the premises/building are an artist's impression of the development and for representational purposes only. The details, pictures and images contained in the leaflets, brochures or any other printed material does not constitute an offer and/or contract of any type between the Promoter/ Developer and the recipient. All transactions in this development shall be subject to the terms and conditions of the Agreement for Sale to be entered into between the parties.