



GOPALAN
LAKE FRONT
— **ELECTRONIC CITY, PHASE - I** —

GOPALAN
LAKE FRONT
—
ELECTRONIC CITY, PHASE - I



About the developer

Gopalan Enterprises, in the last three decades, has established itself as a standard of quality and trust. The company's commitment to innovation, integrity and customers needs is reflected in its happy customers. With over 10 million square feet of constructed space, Gopalan Enterprises is a leader in its domain.

Gopalan Enterprises has diversified from its initial offering of Residential apartments to Malls, Commercial Spaces, Cinemas, Bowling Alleys, Education (Schools and Colleges), Skill Academies, Organic Farming, Coworks and now Aerospace.

Gopalan Enterprises has constructed more than 6400 residential units in Bangalore-including apartments and row houses. 34 completed projects and 4 under construction make the company one of the largest builders in Bangalore.



66
Projects Built



6402
Residential Units



1.6 mn sqft
Retail Space



4 mn sqft
Commercial Space



10 mn sqft
Under Construction





Awards & Recognitions



Global Real Estate
Brand Awards



CNBC Awaaz



Construction Times



International Brand Equity
(Goa)



Quikr
(Bangalore)



Asia One Awards
(Singapore)



ETNow
(Mumbai)

Testimonials



Ananya & Manish
Flat B-602

"Gopalan Lake Front is an excellent project in all aspects like quality of construction, good connectivity to some of the city's prime locations and facing two lakes view and close proximity to Metro station. Small project with lot of amenities. This is one of the best projects we have ever seen and really happy to see the way it has been appreciated. I'm indeed a happy customer".



Ranjith KR
Flat B-1001

"We are proud to become Gopalan Lake Front Family...It is an excellent property with all super Luxury Amenities...Prime location with good construction quality. Well connected to the city; Soon to be a prime location to live in Bengaluru ones Metro starts which is just in front of the society. Whole marketing team is dedicated and helpful.

Dream Home to live in".





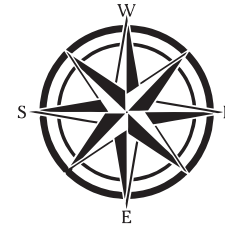
GOPALAN LAKE FRONT

ELECTRONIC CITY, PHASE - I

The swan drifts quietly on a pond. It leaves no ripples, creates no waves. Surrounded by a soft glow, it exudes tranquility and an ethereal grace. The vast expanse of the blue below sustains while the clear air above energises.

This serene and graceful creature, seen at a placid Lake Front, urges one to find time to be simply oneself. In the era of constant movement, it pleads to slow down and revel in the moment.

Gopalan Lake Front brings you homes that nudge You to this romance with your inner self. A retreat your mind seeks, one that revitalises and makes you smarter, different and settled.



GOPALAN LAKE FRONT

ELECTRONIC CITY, PHASE - I

Master plan

- | | | |
|-----------------------|---------------------------|---------------------------|
| 1 Entry & Exit Canopy | 6 Cycling Track | 11 S.T.P |
| 2 Security Kiosk | 7 Sitting Plaza | 12 Lawn |
| 3 Club House | 8 Garden Benches | 13 O.W.C |
| 4 Swimming Pool | 9 Outdoor Fitness Plaza | 14 Senior Citizen's Plaza |
| 5 Jogging Track | 10 Transformers & DG sets | 15 Kids Play Area |

Inside Club House

Hall | Gym | Aerobics | Yoga | Meditation | Kids Activity | Billiards | Indoor Games | Cards Room | Business Center | Departmental Store





15

14

6

5

2

1

3

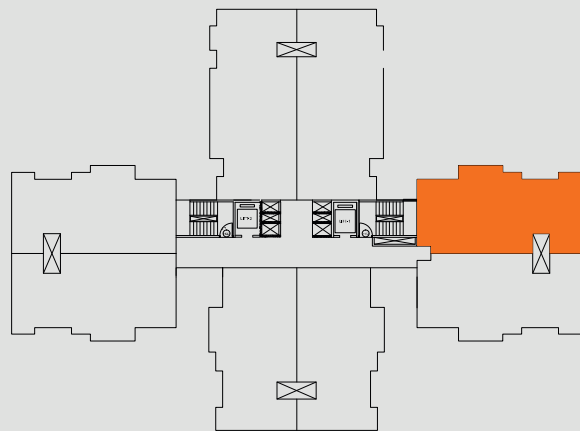
4

7

8

9

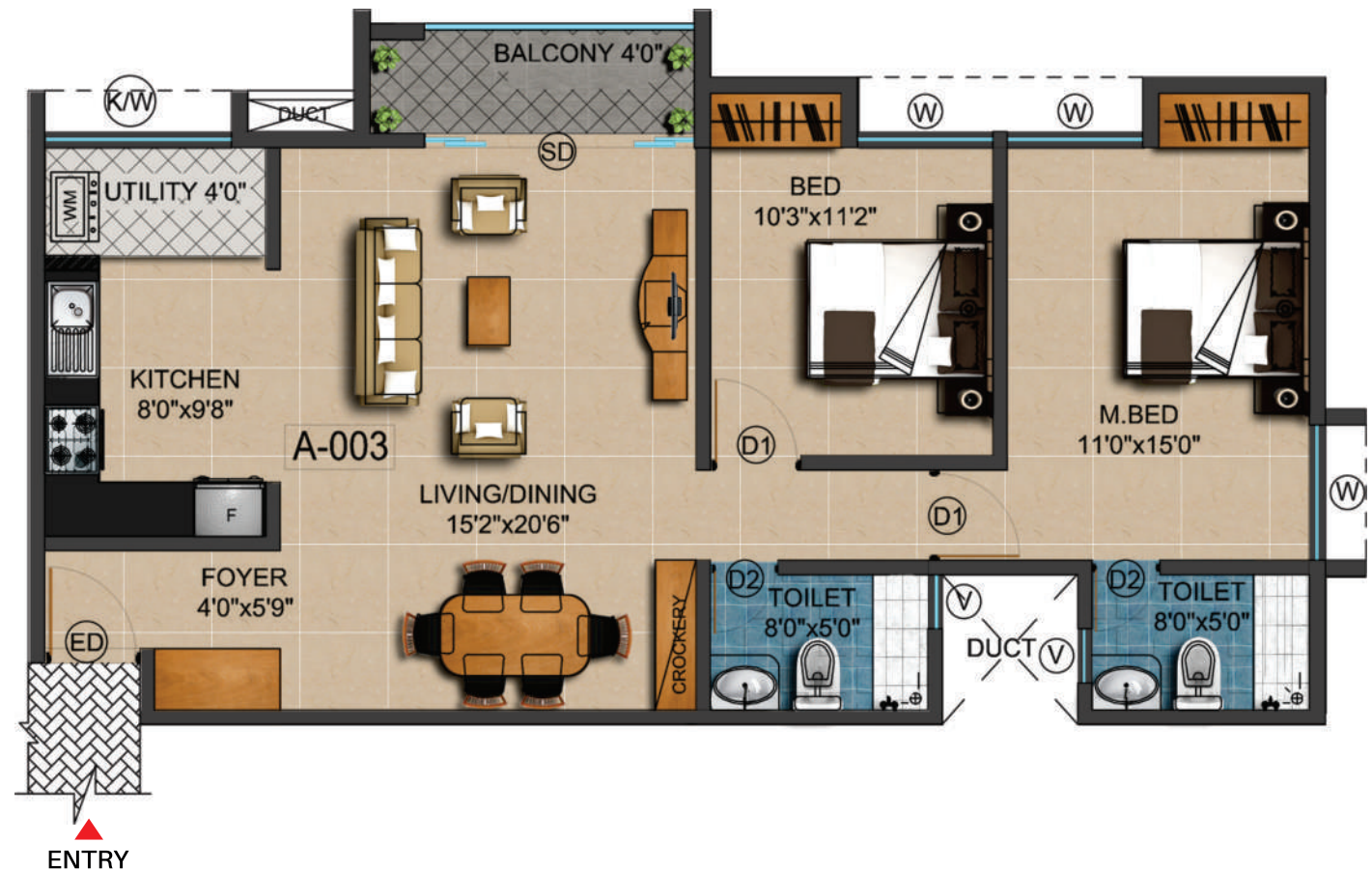
BLOCK - A
G+ 12 FLOORS



Typical Floor Key Plan

Disclaimer: 1. All dimensions are in metric, measured to wall finishes. 2. All materials, dimensions & drawings are approximate. 3. Information is subject to changes without notice, at developer's absolute discretion. 4. Actual area may vary from the stated area. 5. Drawings are not to scale. 6. All images used are for illustrative purposes only and do not represent the actual size, features, specifications, fittings and furnishings. 7. The developer reserves the right to make revisions / alterations at it's absolute discretion.

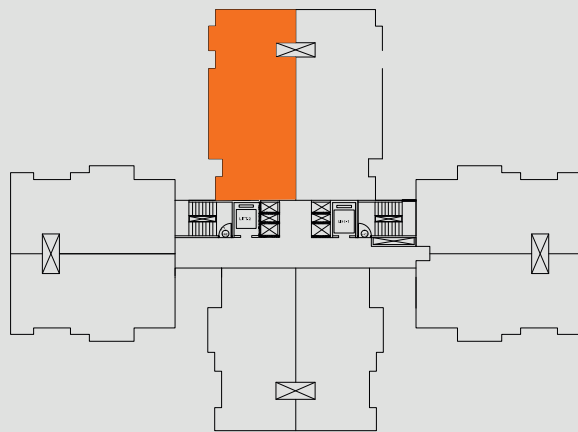
2 BED ROOM APARTMENT



2 BED ROOM APARTMENT - Level 1 to Level 12

AREA - SBUA : 1255 SQFT (CA : 920 SQFT)
SBUA : 1258 SQFT (CA : 932 SQFT)
SBUA : 1265 SQFT (CA : 929 SQFT)

BLOCK - A
G+ 12 FLOORS



Typical Floor Key Plan

Disclaimer: 1. All dimensions are in metric, measured to wall finishes. 2. All materials, dimensions & drawings are approximate. 3. Information is subject to changes without notice, at developer's absolute discretion. 4. Actual area may vary from the stated area. 5. Drawings are not to scale. 6. All images used are for illustrative purposes only and do not represent the actual size, features, specifications, fittings and furnishings. 7. The developer reserves the right to make revisions / alterations at its absolute discretion.

3 BEDROOM APARTMENT



3 BEDROOM APARTMENT - Level 1 to Level 12

AREA - SBUA : 1482 SQFT (CA : 1115 SQFT)

SBUA : 1555 SQFT (CA : 1174 SQFT)

SBUA : 1565 SQFT (CA : 1166 SQFT)





GOPALAN LAKE FRONT

ELECTRONIC CITY, PHASE - I

Your Pride and Joy at the gateway to Electronic City, Bangalore

Phase 1 - 3 Blocks, G+12 Floors and 312 apartments that offer premium living, superior finishes and ideal layouts that ensure Gopalan Lake Front matches your style. The project presents exteriors that accentuate the interiors, conveniences that simplify and a retreat that's just perfect for you.



GOPALAN
LAKE FRONT
ELECTRONIC CITY, PHASE - I

Living Room

These living rooms that reflect your personality, engage and urge you to make memories. Invite your friends and family with pride.









GOPALAN LAKE FRONT

ELECTRONIC CITY, PHASE - I

Master Bedroom

With natural light streaming in, these are welcoming, cozy, soothing, yet luxurious spaces - perfect to reflect, rejoice and relax.



GOPALAN LAKE FRONT

ELECTRONIC CITY, PHASE - I

Kitchen

Designed to reflect your mood- practical yet aesthetic, functional yet classy. These kitchens let you be a gourmet chef, a messy burger maker, a party giver or a humble cook in pajamas, all ensuring cooking is pleasure.





Billiards



Gym



Jogging Track



Lawn Tennis



Swimming Pool



Table Tennis



Yoga Center



Kid's Play Area



Club Life - Wave Plaza

These homes come with a bouquet of needs fulfilled. Be it delicately designed seating areas for the wiser denizens or colorful, safe play areas for the little ones, a fully modernised, well equipped and maintained gym or turfed tennis courts, the dwellers of Gopalan Lake Front have it all-at home.



GOPALAN LAKE FRONT

ELECTRONIC CITY, PHASE - I

Club Life - Wave Plaza

Work, pleasure, leisure or chores, simplify all at the welcoming lounge, discussion rooms, meditation centres, department store and keep the kids engaged in the activity room on those rainy days.





GOPALAN LAKE FRONT

ELECTRONIC CITY, PHASE - I



1 MINUTES

Electronic City Station



2 MINUTES

D Mart



2 MINUTES

Electronic City Toll Plaza



7 MINUTES

Izee Business School



12 MINUTES

PESIT South Campus



13 MINUTES

Narayana Hrudayalaya



14 MINUTES

Infosys Limited



20 MINUTES

Ebenezer International School





Aurigene Discovery Technologies Limited

Fiduasia
ಫಿದುಅಸಿಯ

Micro Labs Limited

Sri Lakshmi Venkateshwaraswami...

Veknkateshwra Temple

Hanum

6th Cross Street
5th Cross Street
4th Cross Street
3rd Cross Street
2nd Cross St

Huskur Rd

ARC PARCEL SERVICE PRIVATE LIMITED

Muneshwara Temple

Ananth nagar society

Paras Maitri

Wild n Fresh

Shri Udbhava Veerabhadreswara...

St. Antony's Pet Clinic
ಸಂತ ಆಂಟನಿ ಪಶು

neshwara temple Road

ಶೇಷ್ವರ
ಸ್ಥಾನದ...

Veerasandra To Muneshwara Temple...

Sri Kaveramma Temple

Gopalan Lakefront

Ebenezer Church

Service Bengaluru
ಜಿಡಿ ಬೆಂಗಲೂರು

aritable Trust

Indian Oil Petrol Bunk



Specifications

STRUCTURE
» Basement + Ground + 12 storied RCC Slab & Shear walls
CAR PARKING
» Covered car parks in basement level
» Visitors' car parks on ground level
FOYER/LIVING/DINING/BEDROOMS
» Superior quality vitrified tile flooring and skirting
PAINTS
» Plastic emulsion for interiors wall ceiling
» Weather proofed acrylic emulsion for exteriors
TOILETS
» Superior quality ceramic for wall tiling up to ceiling height.
» Superior quality ceramic for floor
KITCHEN
» Superior quality vitrified tile flooring
» Superior quality ceramic tiling dado 2'-0" above platform
» Stainless steel single bowl sink with drain board in utility
BALCONIES/UTILITIES
» Superior quality ceramic tile flooring and skirting
» Mild steel handrail
LOBBY / STAIRCASE
» Granites for flooring treads & risers
» Texture finish for walls
» Mild steel handrail

COMMON AREAS
» Granite / Verified for flooring
» Superior quality ceramic tile cladding up to ceiling
» Plastic emulsion for ceiling
» Mild steel handrail
JOINERY
» Main door and bedroom doors of both sides masonite skin with Timber frame & architraves
» Toilet door of timber frame and architraves. Shutter with Masonite skin on the external side and laminate on the internal side
» High quality ironmongery and fittings for all doors
Heavy-duty aluminium windows made from specially designed and manufactured sections
LIFTS
» Total no. of 6 lifts of reputed make
» Capacity – 15 no's of passengers
LANDSCAPE
» Designer landscaping
COMMON FACILITIES
» Well-equipped clubhouse
» Swimming pool
» Children's play area
PLUMBING & SANITARY
» Sanitary fixtures of reputed make in all toilets
» Chromium plated fittings of reputed make in all toilets
ELECTRICAL SPECIFICATIONS
» BESCOM power supply of three phase 5 Kilo Watt per flat
» Stand by power (Generator back-up) of Kilo Watts for each unit
» 100% stand by power (Generator back-up) common facilities
» Provision for AC in bedrooms
» Intercom facility provided from security cabin to each apartment

Specification Disclaimer

The views shown are artist's impression only. | The size, shape, and position of doors / windows, columns, design of railings and various other elements are subject to change. | The furniture / fixtures, including counter in kitchen, in shown to indicate the space available and likely position of electrical points are not a part of standard specifications. | The finishes - flooring, tiles in toilet, kitchen, utility, balconies, etc., paint colour, door finish / colour and any other finishes are only indicative and are subject to change. | The dimensions and areas shown are from block to block, without considering any plaster & finish. Gopalan Enterprises reserves the right to change specifications without prior notice, in the interests of quality and timely delivery. We request our valuable customers to note that any such changes made will not, in any way, be detrimental to the quality of the building

SEZ



Shopping Malls



Hospitality



Organic Farm



Schools



Coworks



Colleges



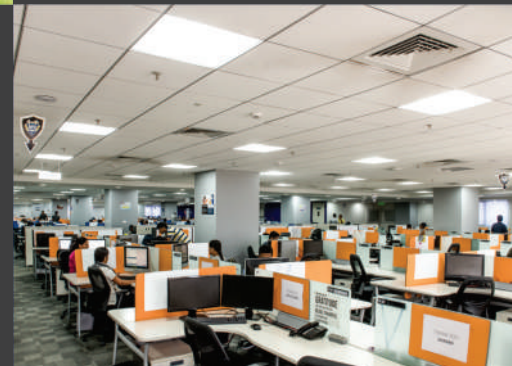
Sports Centre



Aerospace



IT Parks



Tech Fabs



Skill Academy



Cinemas



The Team

With the Highest Standards

As a dynamic and vibrant team of design and construction professionals, Gopalan Group brings an acute awareness of the importance of quality, safety, community and environment to every project.

Gopalan's track record over the past decade includes Award-winning projects and successful delivery of quality residential, commercial and retail projects.

The highly qualified leadership team and its trusted allies in the architecture, planning and trade domains approach every project with the aim of creating a place where those who live and work in can take pride in.

Gopalan listens to the market and its clients and operates with an openness and transparency that ensures a sense of cooperation and mutual focus on the desired outcome

Through meticulous project planning and scheduling Gopalan ensures that the quality of workmanship is impeccable and that the end result is one that enriches the urban environment and has lasting value.





5/1, Gopalan Enterprises, Ground Floor, Rich Homes, Richmond Road, Bangalore 560025, Ph. No. 080 - 4931 4931

E-mail: sales@gopalanenterprises.com, Website: www.gopalanenterprises.com