

॥ संस्कार संकुलन ॥

*Kanchangiri*

*The Gateway to the Richer Life*

## BUILDERS PROFILE

Since 1980s, Goodwill Builders has a strong vision to build beautiful spaces that cater to individuals from all walks of life

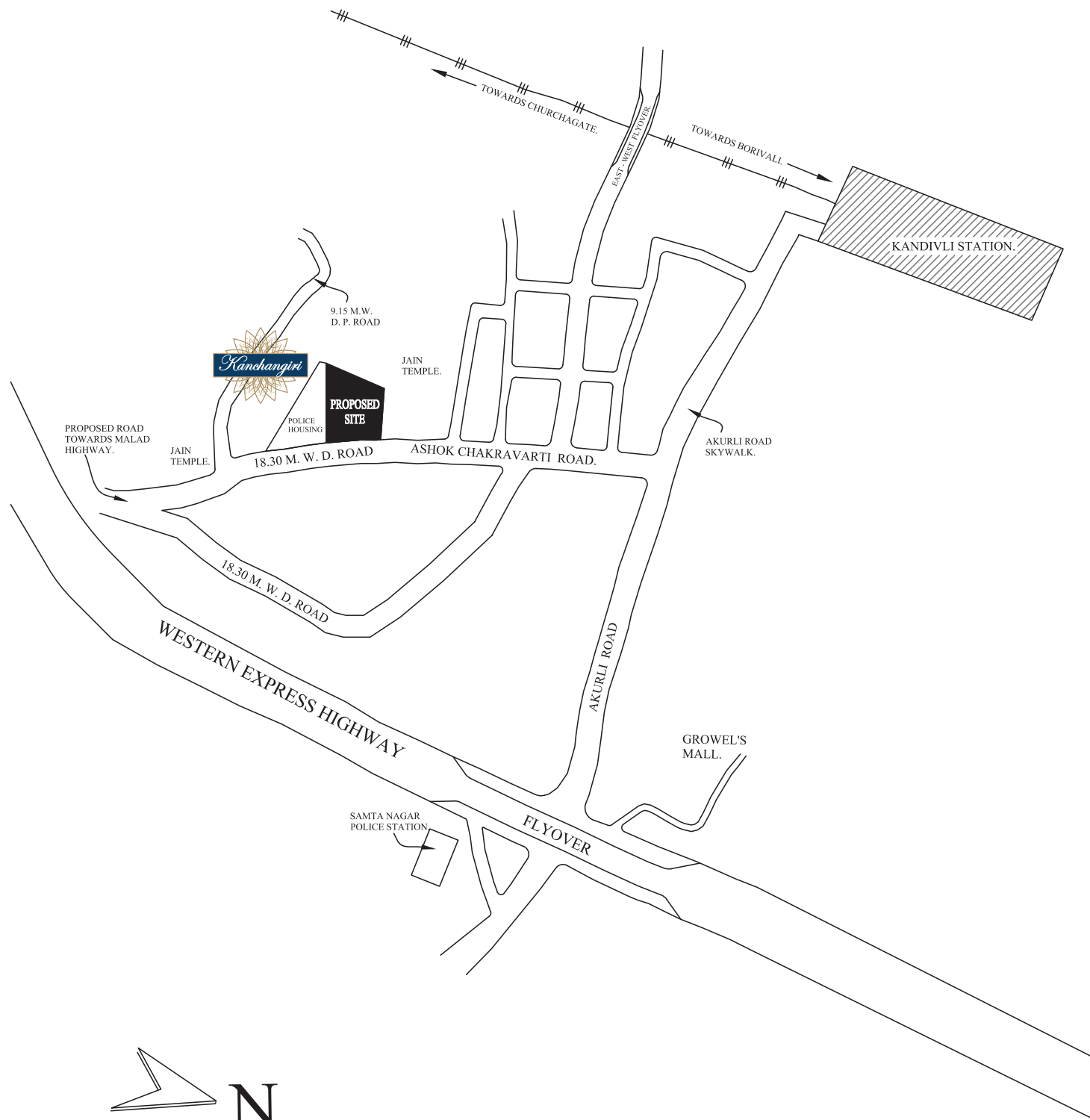
Goodwill Builders has delivered best in class spaces with utmost dedication and hard work

Goodwill Builders Collectively has constructed and delivered more than 1,000,000 ft.<sup>2</sup> in the western suburbs of Mumbai

Goodwill Builders has created value for themselves in the Real Estate Industry

With a strong foundation and core values every employee works with Honesty, Integrity and Equality to achieve the growth goal and to create a healthy environment with brokers, clients, investors and all other stake holders.

# LOCATION PLAN



# BLOCK PLAN

WITHOUT TYPICAL ROOM LINE



18.30 M. W. CHAKRAVARTI ASHOK ROAD

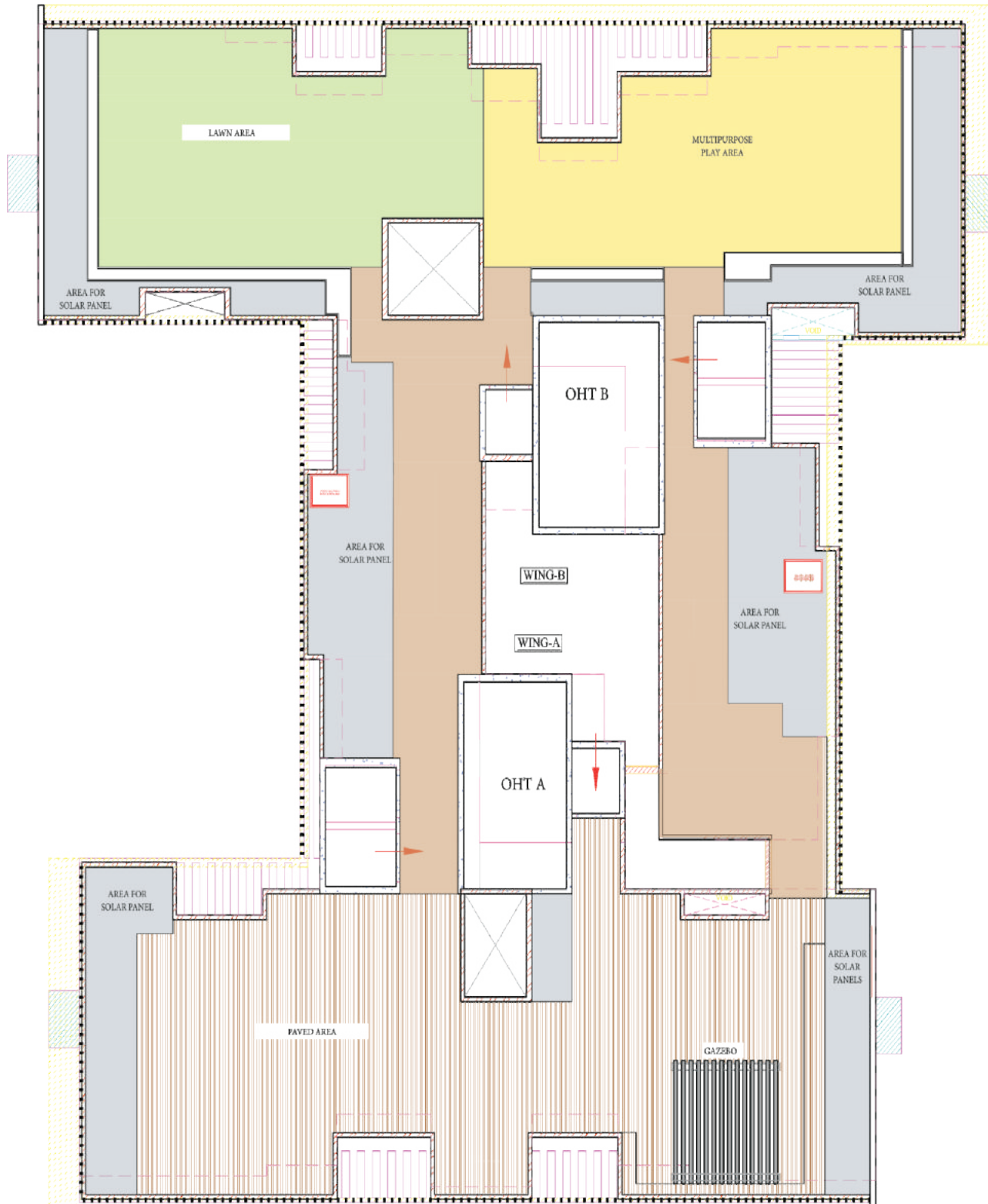




Artistic Impression

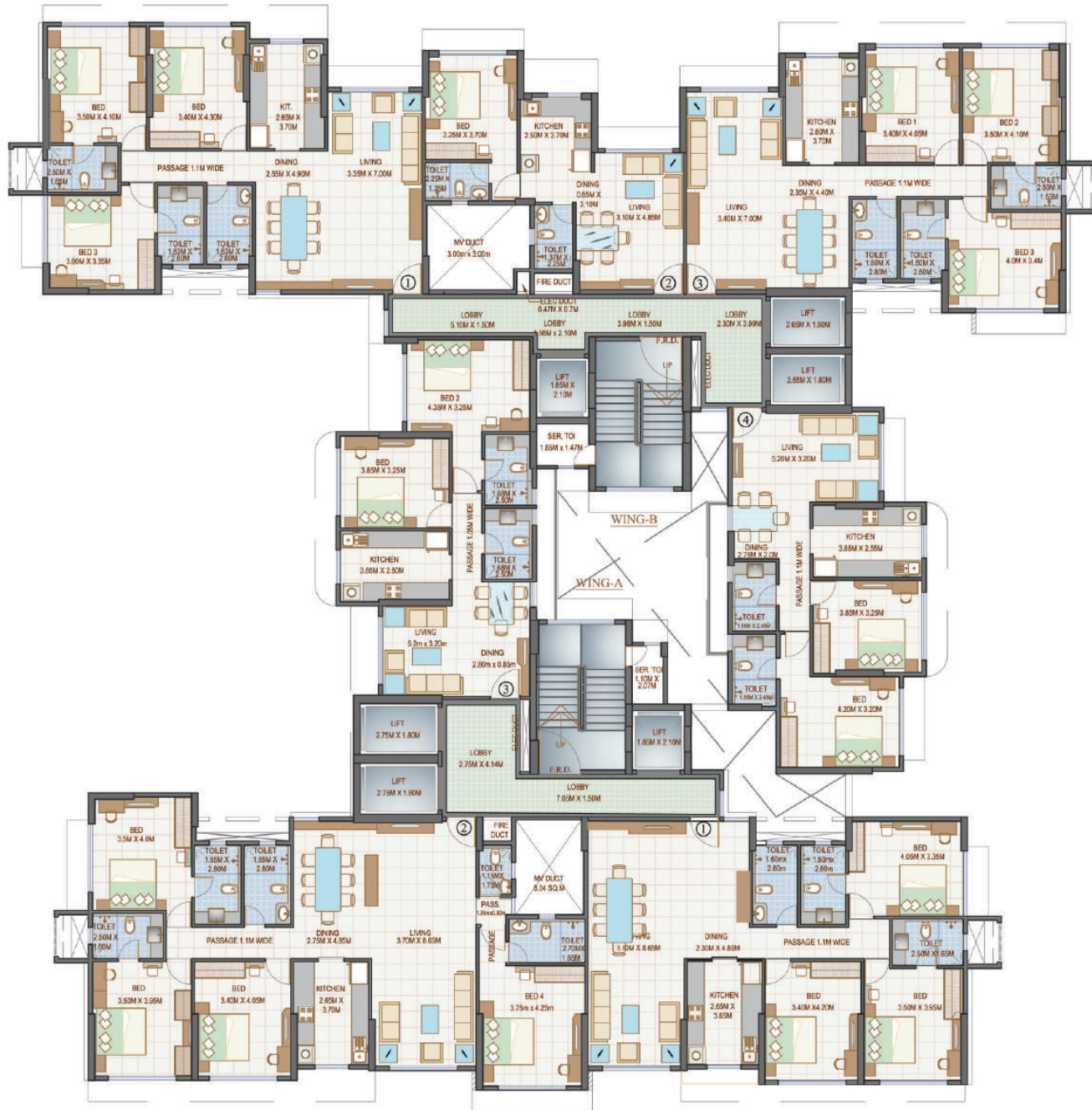


# PROPOSED TERRACE LAYOUT





# TYPICAL FLOOR PLAN



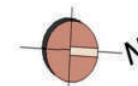
# FLOOR PLAN

## WING - A



### Wing A

- 1) 3BHK - 1240 Sq.ft
- 2) 4BHK - 1565 Sq.ft
- 3) 2BHK - 770 Sq.ft





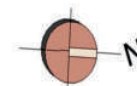
# FLOOR PLAN

## WING - B



### Wing B

- 1) 3BHK - 1188 Sq.ft
- 2) 1BHK - 505 Sq.ft
- 3) 3BHK - 1165 Sq.ft
- 4) 2BHK - 784 Sq.ft



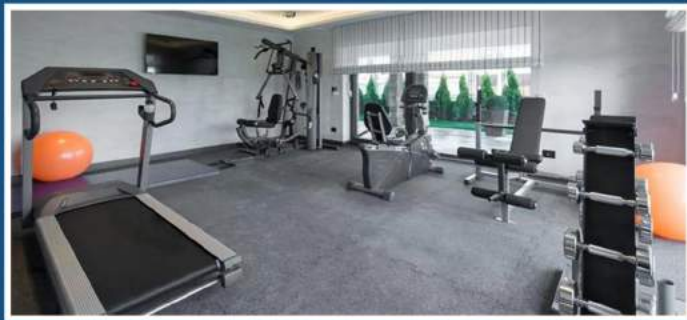
# LIFESTYLE AMENITIES



**RAMP PODIUM PARKING**



**TERRACE AMENITIES**



**GYMNASIUM**



**SENIOR CITIZEN SITTING AREA**



**INDOOR GAMES**



**STP & SOLAR POWER**



**KIDS PLAY AREA**



**GRAND ENTRANCE LOBBY**



# NEAREST VICINITY



**2 JAIN TEMPLES**



**GROWEL'S 101 MALL**



**CHILDREN'S ACADEMY SCHOOL**



**PROPOSED METRO STATION**

## FLAT AMENITIES

- ▶ Vitrified tiles / Equivalent other flooring
- ▶ Premium CP & Sanitary fittings
- ▶ Anodized aluminium glass windows
- ▶ Designer main door with high quality fittings
- ▶ Designer tiles in bathrooms
- ▶ Provision for A/C connection in living rooms & all bedrooms
- ▶ Washing machine & Aqua guard points in Kitchen
- ▶ TV, Telephone points in living room and in all bedrooms
- ▶ Designer kitchen tiles dado up to top of window

## BUILDING AMENITIES

- ▶ CCTV at selected places for security purpose
- ▶ Intercom system
- ▶ Grand entrance lobby
- ▶ Three elevators in each wing
- ▶ Servant toilets in mid landing
- ▶ One goods or servant lift
- ▶ STP to recycle water
- ▶ Backup D.G.Set

- DEVELOPERS -

## **GOODWILL BUILDERS**

12-A, Yusuf Bldg., 1st Floor, 49, Veer Nariman Road, Fort, Mumbai 400 023  
Tel. : 2204 9154 / 2204 4522 / 2204 4538

-Site Address-

## **KANCHANGIRI**

C.T.S. No. 96-E, Village Wadhwan, Ashok Chakravarthy Road,  
Near Jain Temple, Kandivali (East), Mumbai - 400101

**MAHA RERA Regn. No. P51800009001**

**\* For Loan Facility : HDFC Bank Approval No.170740874**

**Architect : KETAN H. MEHTA**

**Planning Architect : M/s. PLANARCH ASSOCIATES**

**R.C.C. Consultant : M/s. MAHIMTURA CONSULANTS PVT. LTD.**

**Legal Advisor : M/s. LAW FIRM OF KHONAS**

**FOR BOOKING CALL:**

**+91 98194 73539 | 9833656065**

**Disclaimer:** All the illustrations, pictures, drawings, Plans, images in any of our promotional materials are indicative in nature. They are artistic impressions and not actual depictions of the building and amenities which are subject to approval and/or modifications by the concerned authorities".