

# STELLA

— A RIVERSIDE RENDEZVOUS —

1, 1.5, 2, 2.5, 3 & 4 BHK Homes

A Project By:

**bakeri**

since 1959

Environment is our Attitude™

# The GIFT of Connectivity



## Connectivity Via Bullet Train

Mumbai - GIFT City: 3 hours



## Connectivity Via Metro

Within GIFT City: Udyan Station  
Exhibition Station  
Vith Station

In Close Proximity PDPU Station: 5.8 Kms  
To GIFT City: GNLU Station: 6.5 kms



## Connectivity With Key Hubs Via Road

Lies in the influence of DMIC  
(Delhi - Mumbai Industrial Corridor)

Close proximity to world class  
educational institutions & hospitals

Connected with 4/6 lane state &  
national highways

S.G Highway - 10 mins

International Airport - 15 mins

SP Ring Road - 10 mins





## About GIFT and Stella by Bakeri

The Gujarat International Finance Tec-City (GIFT) is an innovative and future-ready project, built on the principles of sustainability and cutting-edge technology. As a financial and technological metropolis, it presents an unprecedented ecosystem for economic activities worldwide.

With a home in GIFT City, you are at the epicentre of progress, growth, and the future. Accelerate happiness, connectivity, and a modern lifestyle at GIFT City – a game-changer in Ahmedabad. Stella stands tall against the glorious skyline of this new-age city, welcoming you to a stylish urban future.



# STELLA

brings you a  
choice of 3 towers  
to fulfil your dreams

---

## 3 TOWERS

2 Towers: 33 Floors

1 Tower: 20 Floors

STELLA \_\_\_\_\_

# SKYE

3 & 4BHK Homes

STELLA \_\_\_\_\_

# SOL

1, 1.5 & 2BHK Homes

STELLA \_\_\_\_\_

# SYGNIUS

2.5 & 3BHK Homes

# STELLA — SKYE

## River Facing Unit Specifications

4BHK Type 2.1 | 4BHK Duplex

### FLOORING

- Composite marble flooring in living/dinning
- Laminated flooring in master bedroom & premium vitrified tiles in other bedrooms & kitchen
- Premium anti skid tiles in balconies

### BATH

- Premium vitrified tiles in dado upto lintel level & anti skid floor tile
- Premium quality plumbing fixtures

### DOORS & WINDOWS

- Aluminium section windows in all rooms
- All interior doors with wooden/stone frame & shutters with veneer/laminate finish
- Main door with wooden frame & veneer shutter

### ELECTRIFICATION

- Single/Three phase connections with modular switches
- Sufficient points for power & lightings & all sockets with protective mcb
- Optical fibre for high speed internet in each apartment

### KITCHEN

- Quartz platform with SS sink with drain board
- Dado of glazed tiles upto lintel level
- Garbage crusher
- Anti skid tiles in utility area

### FINISHES

- Textured/plaster with paint on the exterior
- Putty finish in the interior

### AIR CONDITIONING & VENTILATION

- Provisioning of DCS supply in drawing/living & all bedrooms
- AC unit in master bedroom & bedroom 1

### SECURITY

- Video door phone for each unit
- Biometric door lock on entry door
- CCTV video surveillance system in common areas

### FIRE DETECTION & PROTECTION

- Fire prevention, suppression, detection & alarm system as per fire norms



# STELLA — SKYE

## Garden Facing Unit Specifications

3BHK Type 2 | 3BHK Type 1.1 | Studio Type 1

### FLOORING

- Vitrified flooring across the entire apartment
- Laminated flooring in master bedroom
- Anti skid tiles in balconies

### BATH

- Glazed tiles upto lintel height in toilets & anti skid floor tile
- Premium quality plumbing fixtures

### DOORS & WINDOWS

- Aluminium section windows in all rooms
- All interior doors with wooden/stone frame & shutters with veneer/laminate finish
- Main door with wooden frame & veneer shutter

### ELECTRIFICATION

- Single/Three phase connections with modular switches
- Sufficient points for power & lightings & all sockets with protective mcb
- Optical fibre for high speed internet in each apartment

### KITCHEN

- Premium polish granite platform with SS sink with drain board
- Dado of glazed tiles upto lintel level
- Anti skid tiles in utility area

### FINISHES

- Textured/plaster with paint on the exterior
- Putty finish in the interior

### AIR CONDITIONING & VENTILATION

- Provisioning of DCS supply in drawing/living & all bedrooms

### SECURITY

- Video door phone for each unit
- Biometric door lock on entry door
- CCTV video surveillance system in common areas

### FIRE DETECTION & PROTECTION

- Fire prevention, suppression, detection & alarm system as per fire norms

# STELLA \_\_\_\_\_

# SOL

1BHK Type 1 | 1BHK Type 2 | 2BHK Type 1 | 2BHK Type 2 |  
1.5BHK Type 1 | 1.5BHK Type 1.2

## FLOORING

- Vitrified flooring across the entire apartment
- Laminated flooring in master bedroom
- Anti skid tiles in balconies

## BATH

- Glazed tiles upto lintel height in toilets & anti skid floor tile
- Good quality plumbing fixtures

## DOORS & WINDOWS

- Aluminium section windows in all rooms
- All interior doors with wooden/stone frame & shutters with veneer/laminate finish
- Main door with wooden frame & veneer shutter

## ELECTRIFICATION

- Single/Three phase connections with modular switches
- Sufficient points for power & lightings & all sockets with protective mcb
- Optical fibre for high speed internet in each apartment

## KITCHEN

- Premium polish granite platform with ss sink
- Dado of glazed tiles upto lintel level
- Premium modular kitchen cabinet
- Anti skid tiles in utility area

## FINISHES

- Textured/plaster with paint on the exterior
- Putty finish in the interior

## AIR CONDITIONING & VENTILATION

- Provisioning of DCS supply in drawing/living & all bedrooms
- AC unit in one bedroom

## SECURITY

- Video door phone for each unit
- Biometric door lock on entry door
- CCTV video surveillance system in common areas

## FIRE DETECTION & PROTECTION

- Fire prevention, suppression, detection & alarm system as per fire norms

# STELLA \_\_\_\_\_

# SYGNUS

## River Facing Unit Specifications

3BHK Type 3.1 | 3BHK Type 4.1 | 3BHK Type 4.2 |  
3BHK Type 5 | 3BHK Duplex

### FLOORING

- Composite marble flooring in living/dinning
- Laminated flooring in master bedroom & premium vitrified tiles in other bedrooms & kitchen
- Premium anti skid tiles in balconies

### BATH

- Premium vitrified tiles in dado upto lintel level & anti skid floor tile
- Premium quality plumbing fixtures

### DOORS & WINDOWS

- Aluminium section windows in all rooms
- All interior doors with wooden/stone frame & shutters with veneer/laminate finish
- Main door with wooden frame & veneer shutter

### ELECTRIFICATION

- Single/Three phase connections with modular switches
- Sufficient points for power & lightings & all sockets with protective mcb
- Optical fibre for high speed internet in each apartment

### KITCHEN

- Quartz platform with SS sink with drain board
- Dado of glazed tiles upto lintel level
- Garbage crusher
- Anti skid tiles in utility area

### FINISHES

- Textured / plaster with paint on the exterior
- Putty finish in the interior

### AIR CONDITIONING & VENTILATION

- Provisioning of DCS supply in drawing/living & all bedrooms
- AC unit in master bedroom & 1 bedroom

### SECURITY

- Video door phone for each unit
- Biometric door lock on entry door
- CCTV video surveillance system in common areas

### FIRE DETECTION & PROTECTION

- Fire prevention, suppression, detection & alarm system as per fire norms



# STELLA \_\_\_\_\_

# SYGNUS

## Garden Facing Unit Specifications

2.5BHK Type 1.1 | 2.5BHK Type 1.2 | Studio Type 2

### FLOORING

- Vitrified flooring across the entire apartment
- Laminated flooring in master bedroom
- Anti skid tiles in balconies

### BATH

- Glazed tiles upto lintel height in toilets & anti skid floor tile
- Premium quality plumbing fixtures

### DOORS & WINDOWS

- Aluminium section windows in all rooms
- All interior doors with wooden/stone frame & shutters with veneer/laminate finish
- Main door with wooden frame & veneer shutter

### ELECTRIFICATION

- Single/Three phase connections with modular switches
- Sufficient points for power & lightings & all sockets with protective mcb
- Optical fibre for high speed internet in each apartment

### KITCHEN

- Premium polish granite platform with SS sink with drain board
- Dado of glazed tiles upto lintel level
- Anti skid tiles in utility area

### FINISHES

- Textured/plaster with paint on the exterior
- Putty finish in the interior

### AIR CONDITIONING & VENTILATION

- Provisioning of DCS supply in drawing/living & all bedrooms

### SECURITY

- Video door phone for each unit
- Biometric door lock on entry door
- CCTV video surveillance system in common areas

### FIRE DETECTION & PROTECTION

- Fire prevention, suppression, detection & alarm system as per fire norms

# STELLA SHOPS

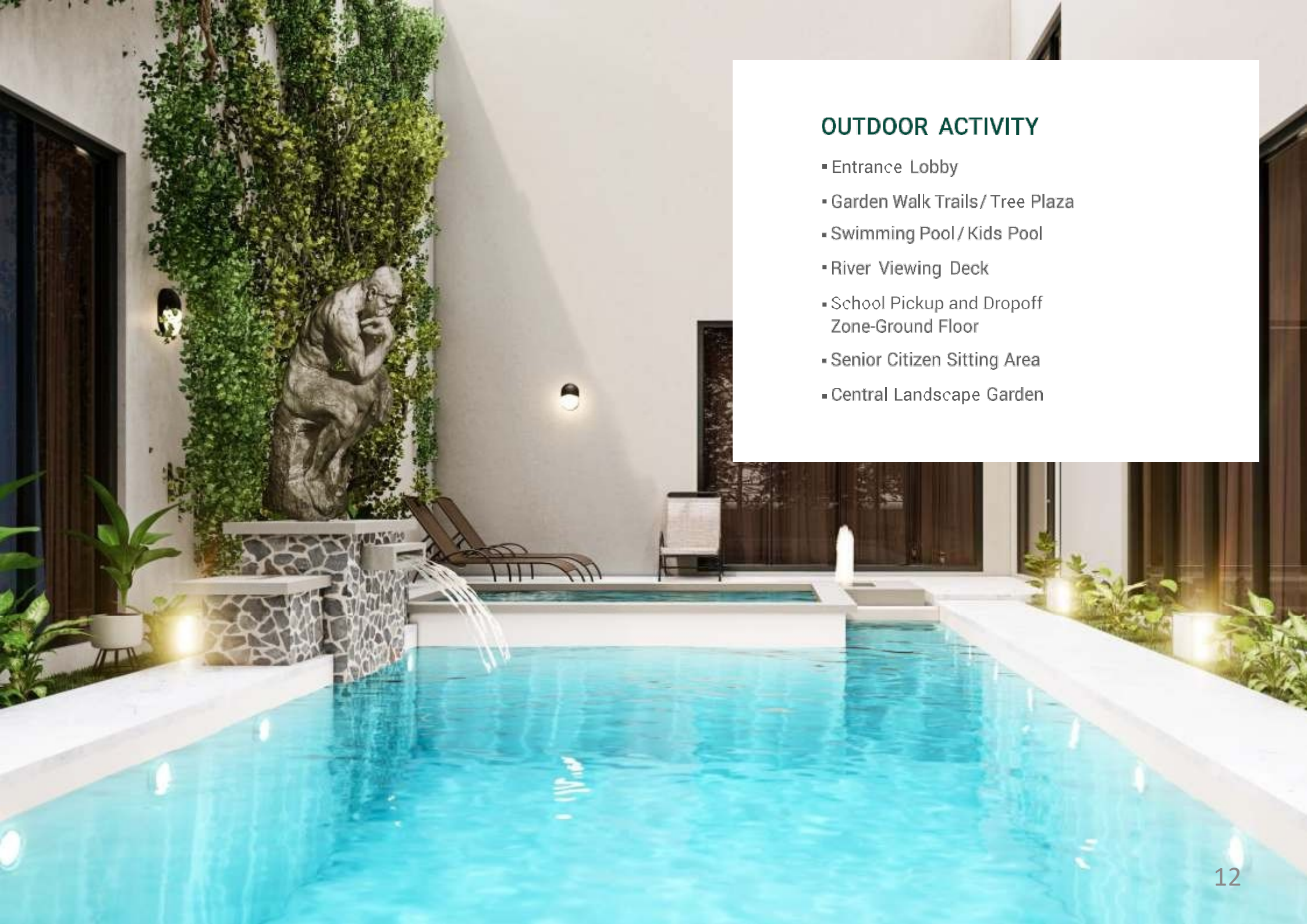
- FLOORING
  - Vitrified flooring across the entire shop area
- TOILETS
  - Glazed tiles up to the lintel in toilets
  - Anti-skid floor tiles
  - Good quality plumbing fixtures
- FINISHES
  - Putty finish in the interior
- ELECTRIFICATION
  - Single-phase connection with modular switches



## INDOOR ACTIVITY

- VR Games Studio
- Mini Plex
- Indoor Play Zone/Day-Care/  
Children's Activity Room
- Indoor Games Lounge
- Pool Tables Room
- Table Tennis Room
- Convenience Store
- Co-Working Space/Library
- Cafeteria
- Banquet Hall
- Gymnasium
- Spa/Sauna
- Yoga & Meditation Room/  
Dance Room
- Guest Rooms – 2 Units





## OUTDOOR ACTIVITY

- Entrance Lobby
- Garden Walk Trails/ Tree Plaza
- Swimming Pool/ Kids Pool
- River Viewing Deck
- School Pickup and Dropoff Zone-Ground Floor
- Senior Citizen Sitting Area
- Central Landscape Garden



# Basement 03



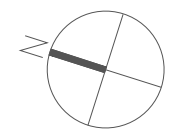
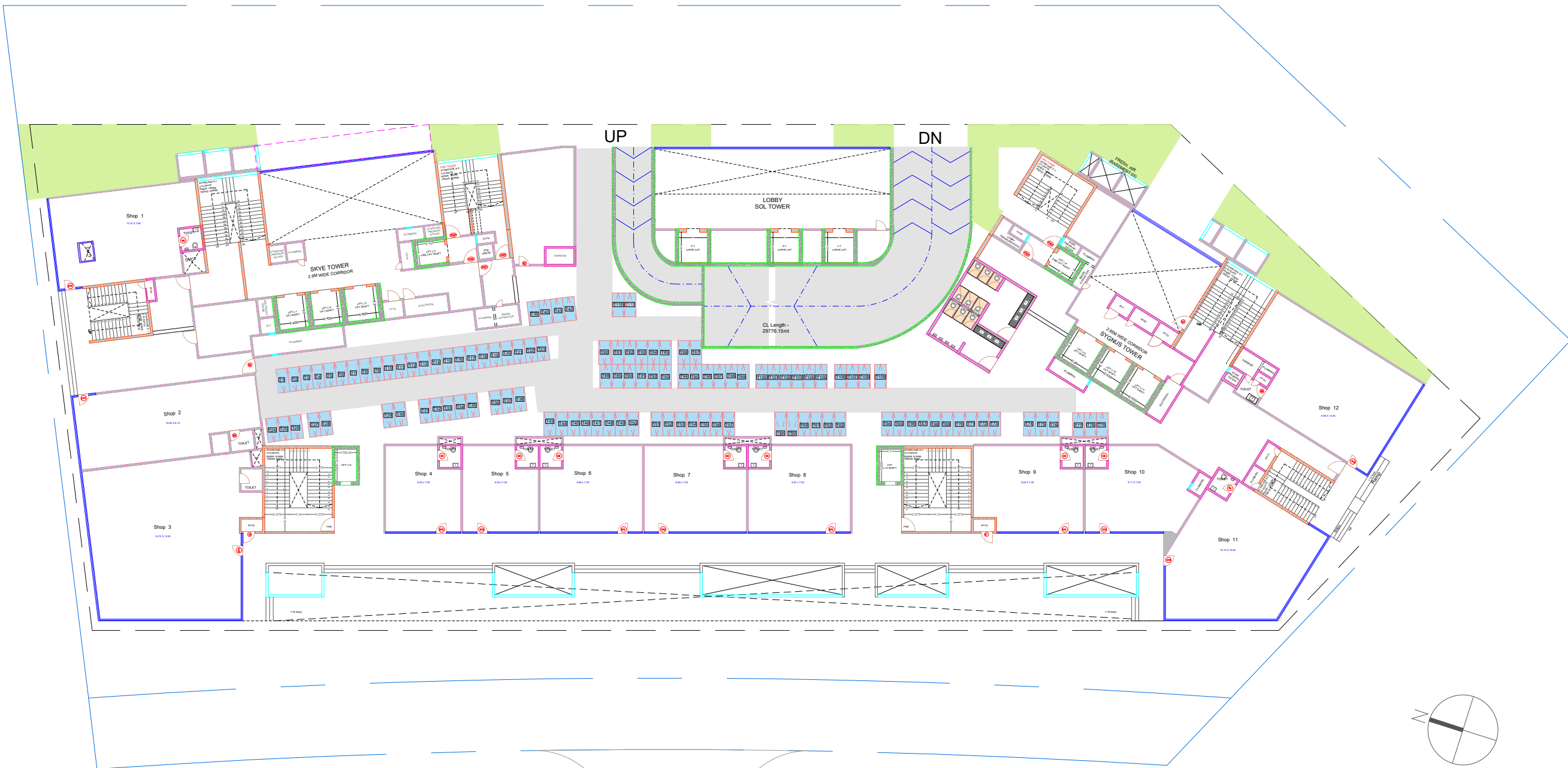


Basement 02

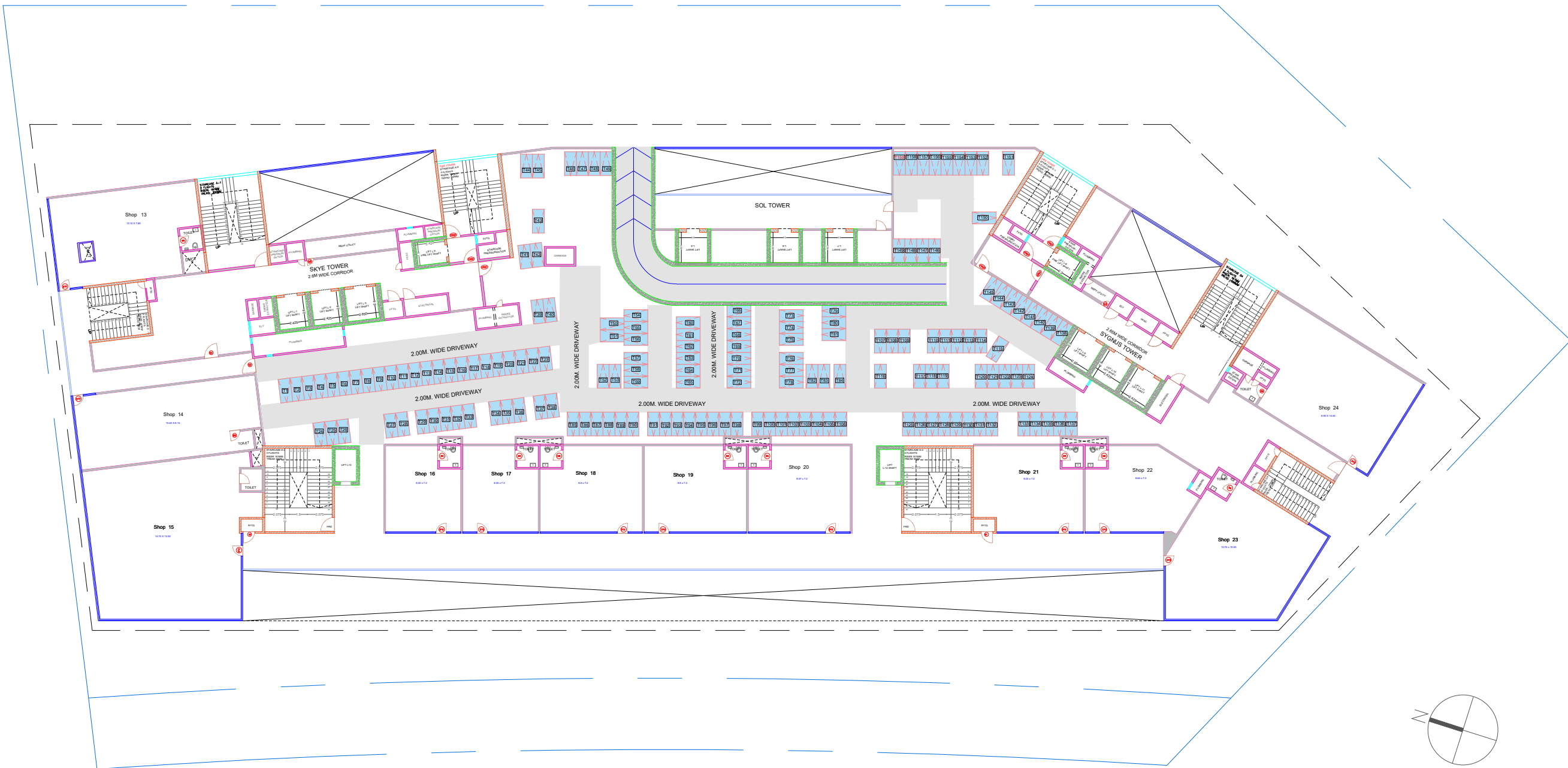




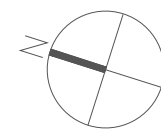
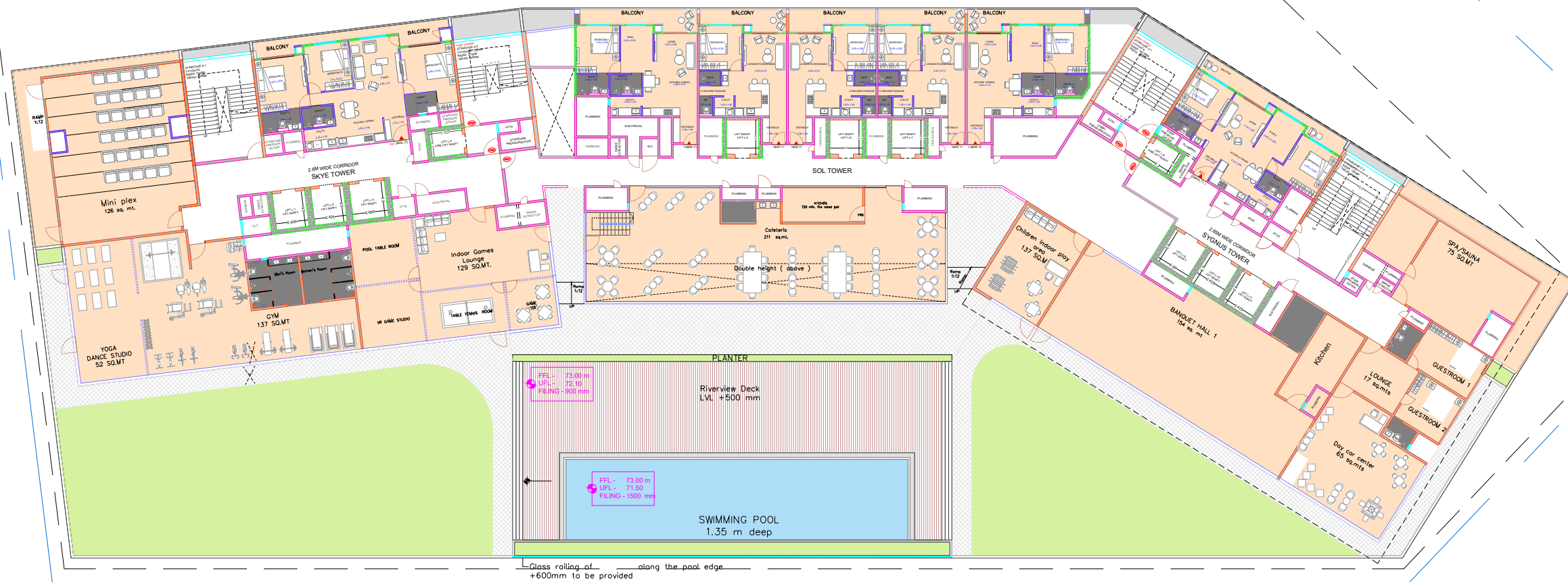
Basement 01



GF Floorplan

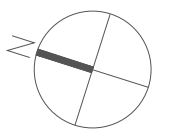
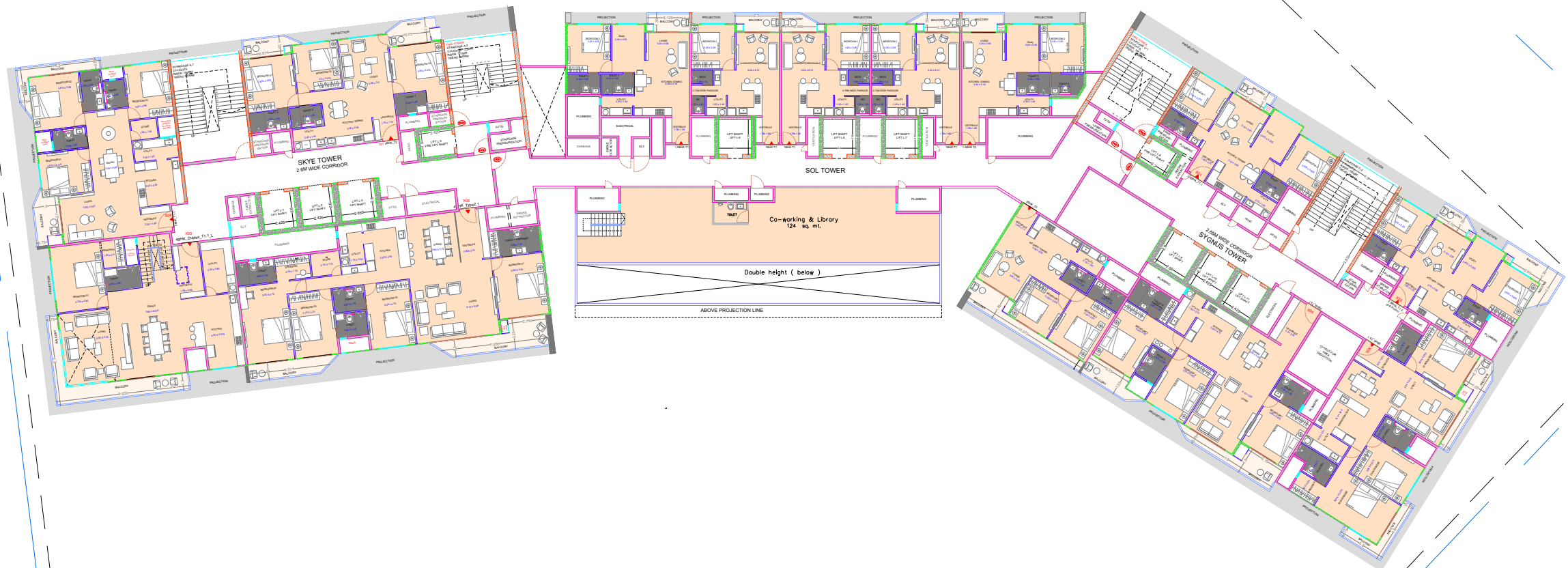


1 Floorplan

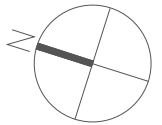
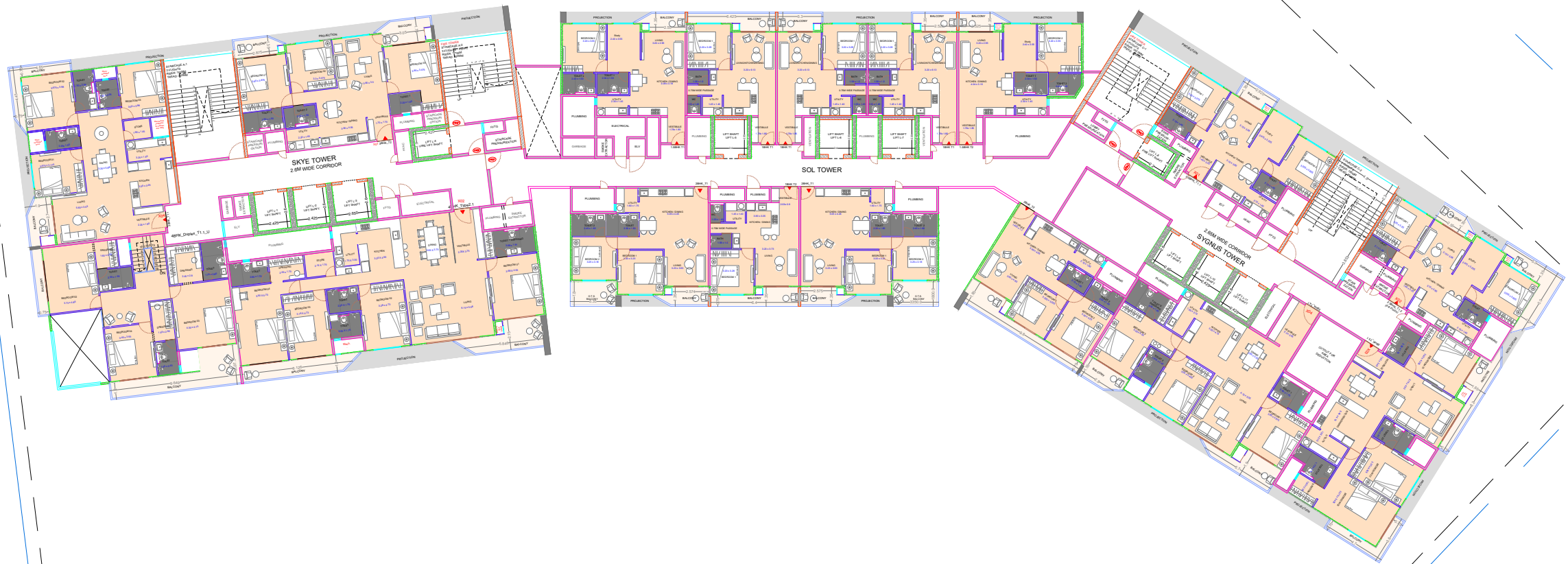


2 Floorplan

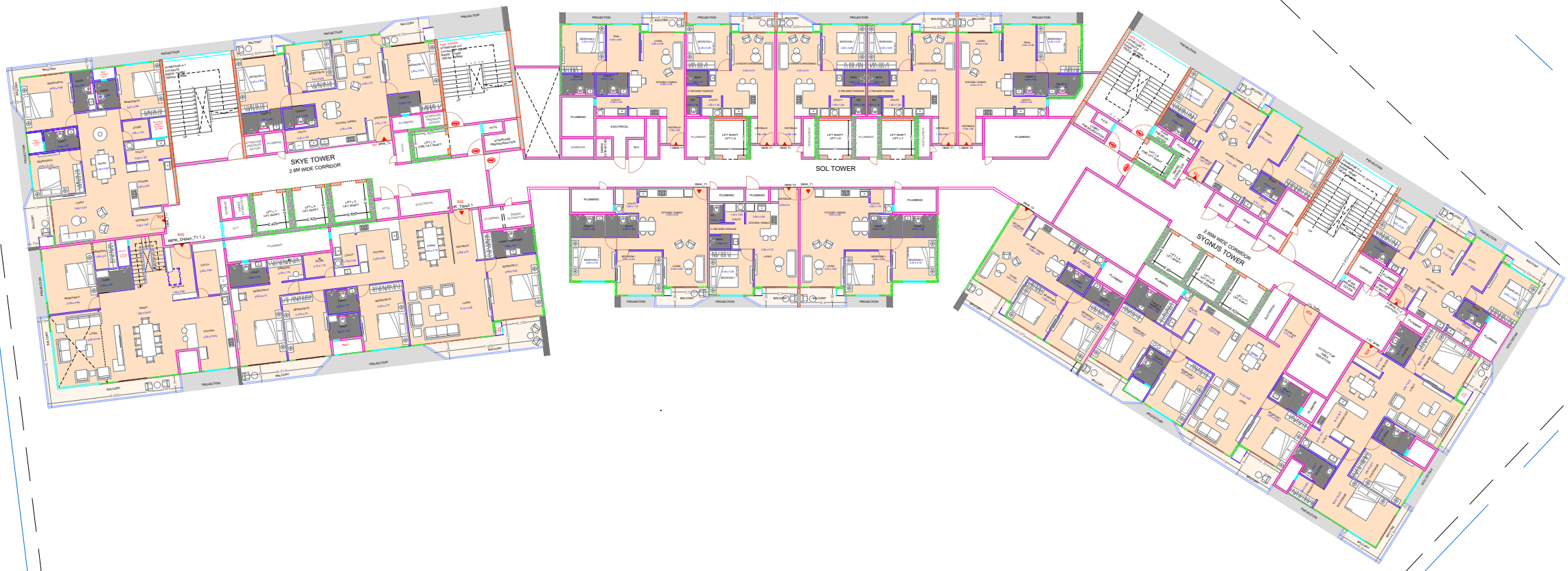




3 Floorplan

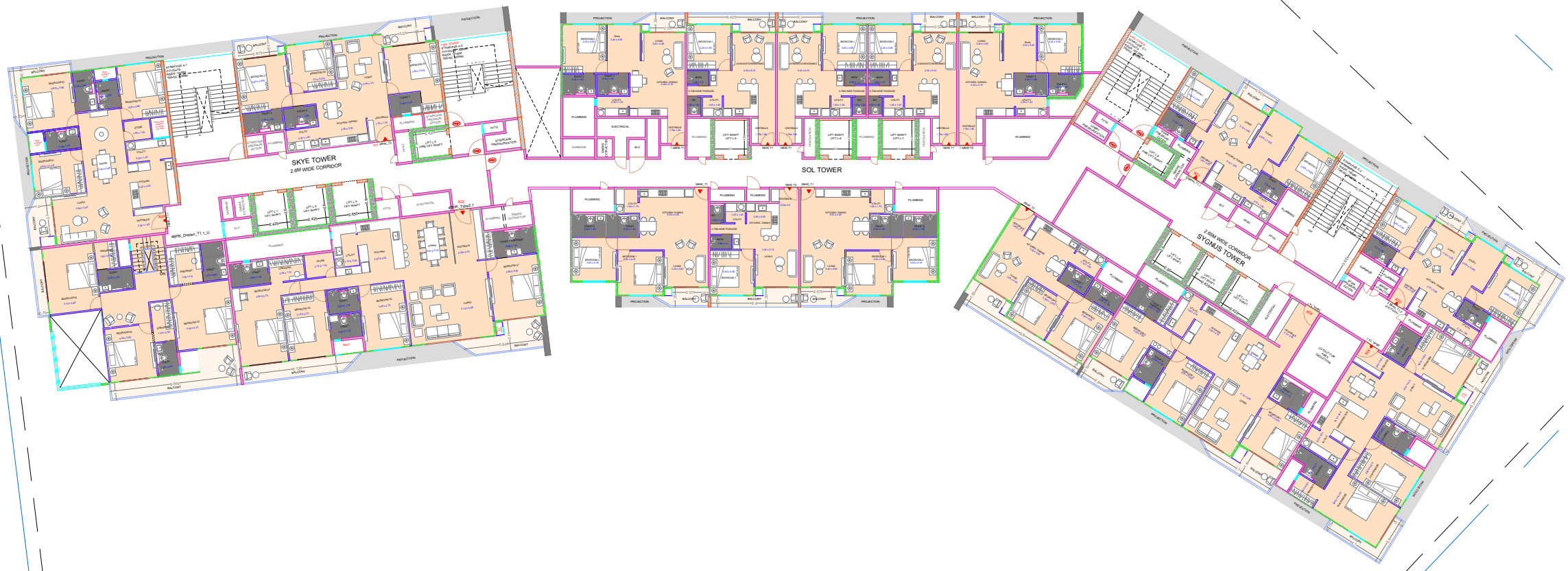


4 Floorplan



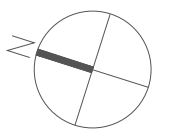
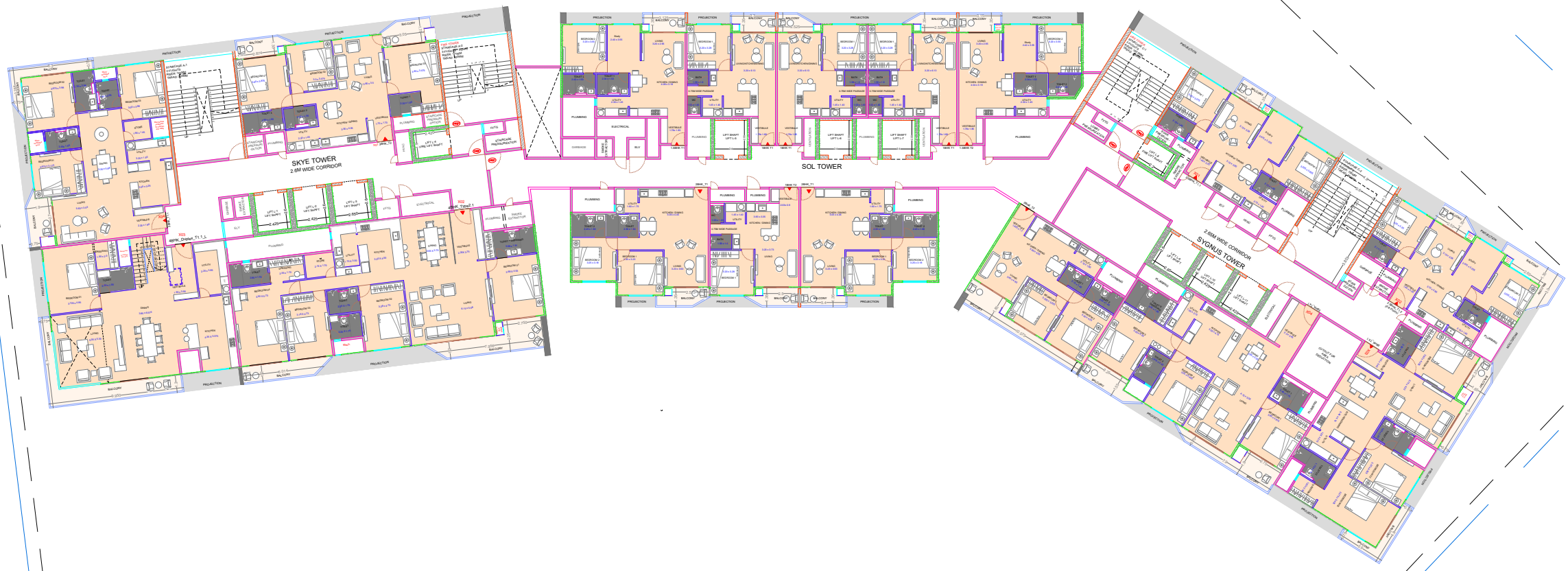
5 Floorplan



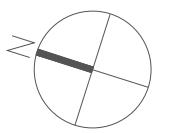
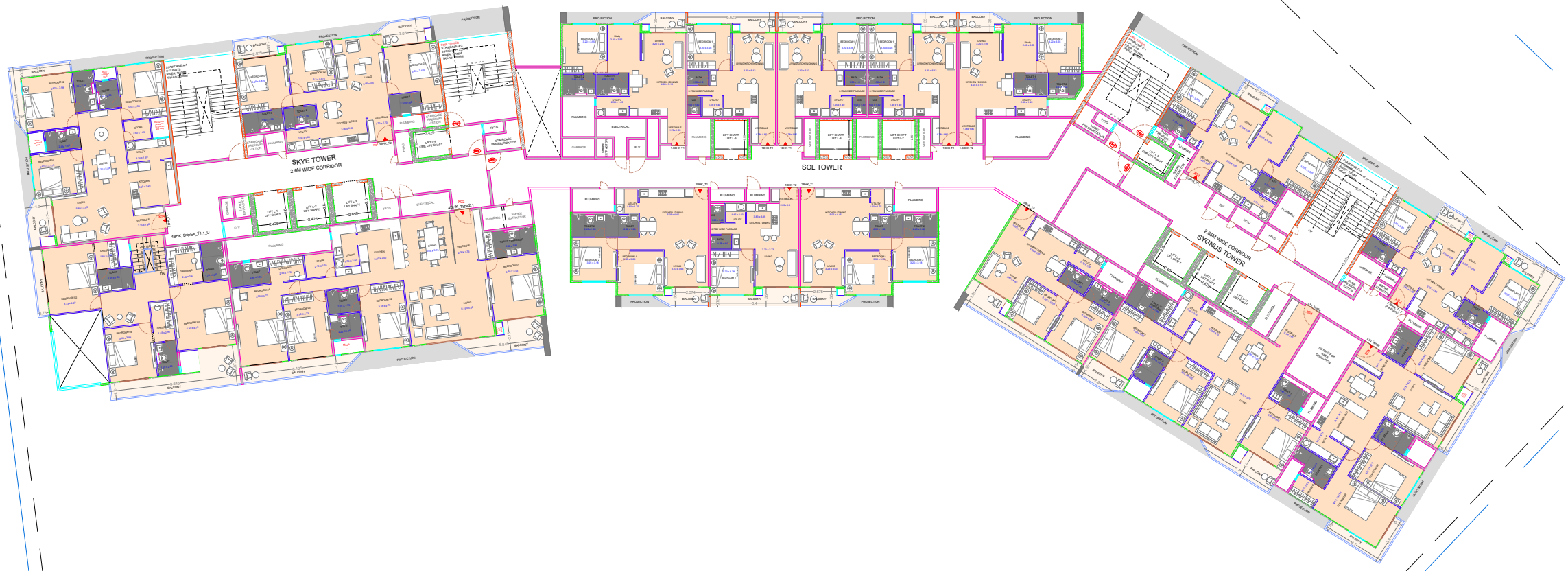


6 Floorplan

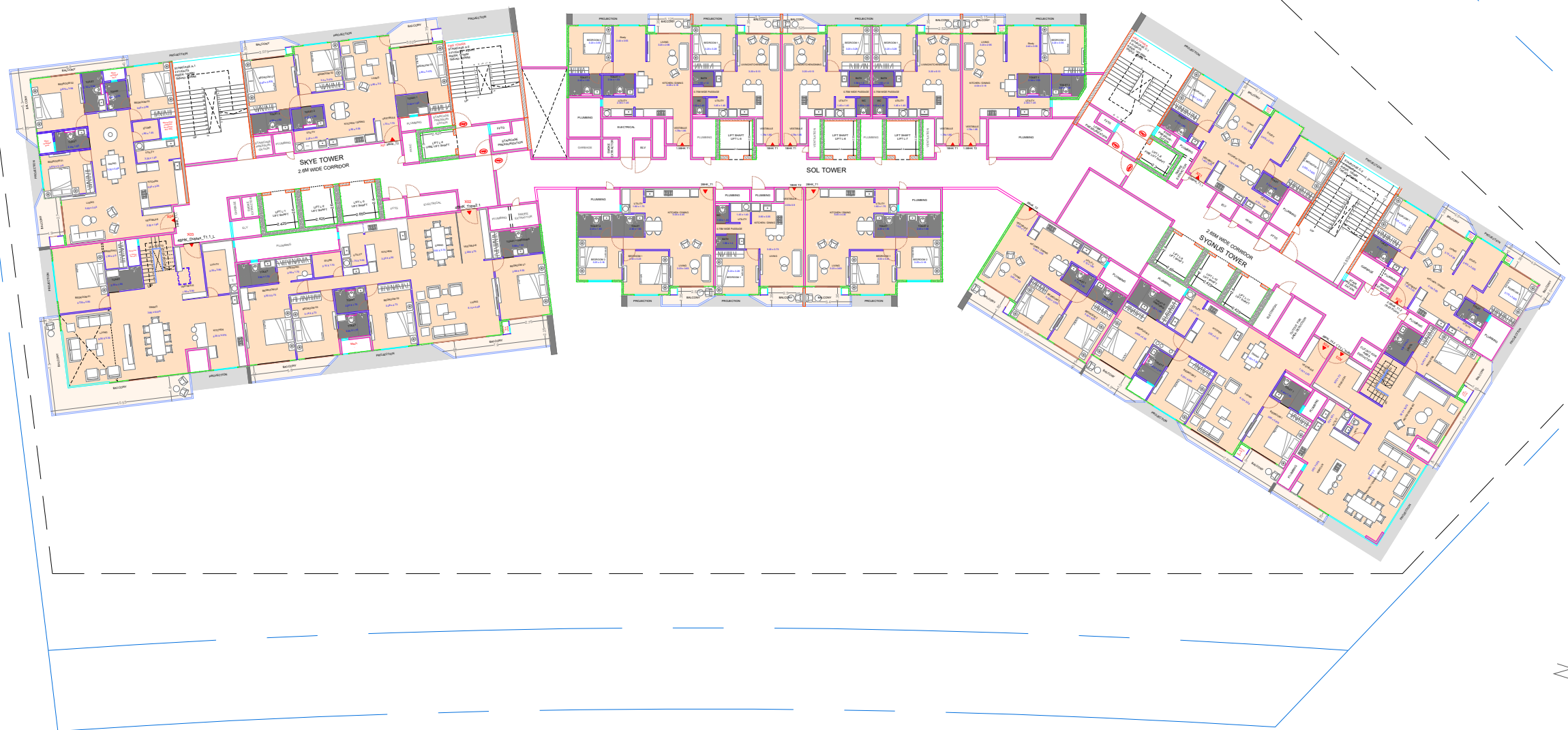




# 7 Floorplan

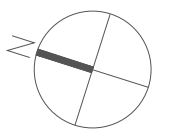
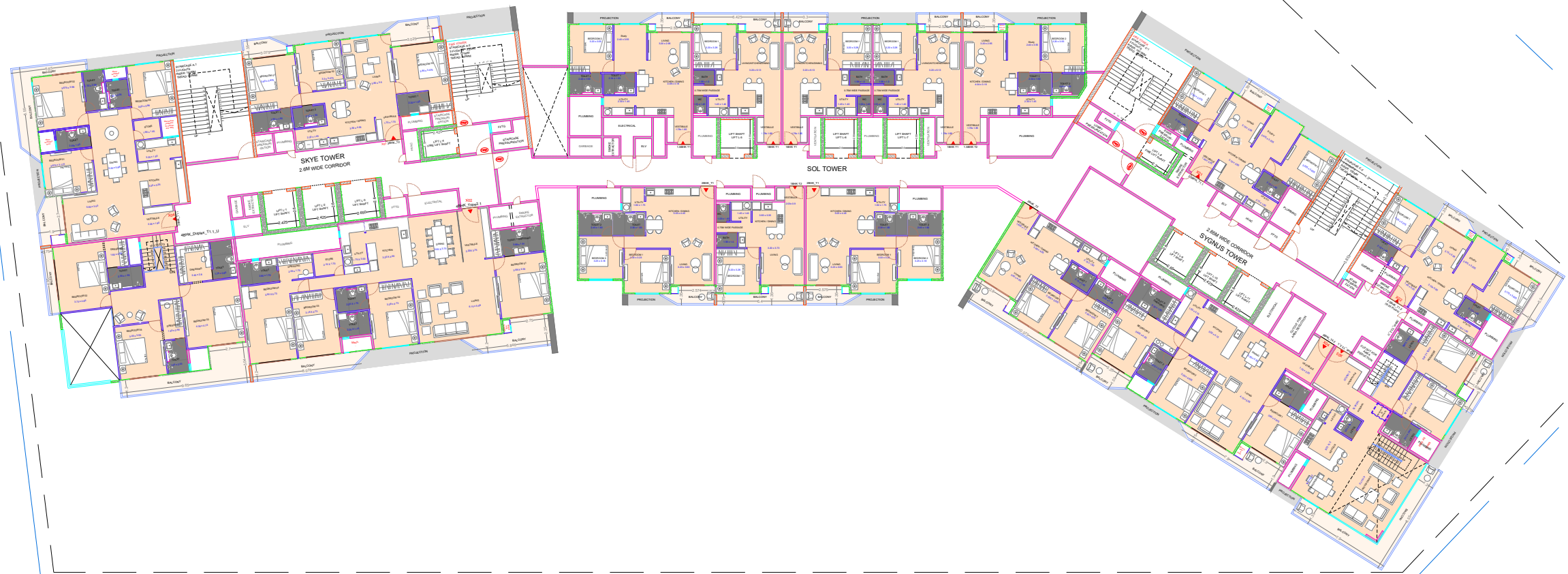


# 8 Floorplan



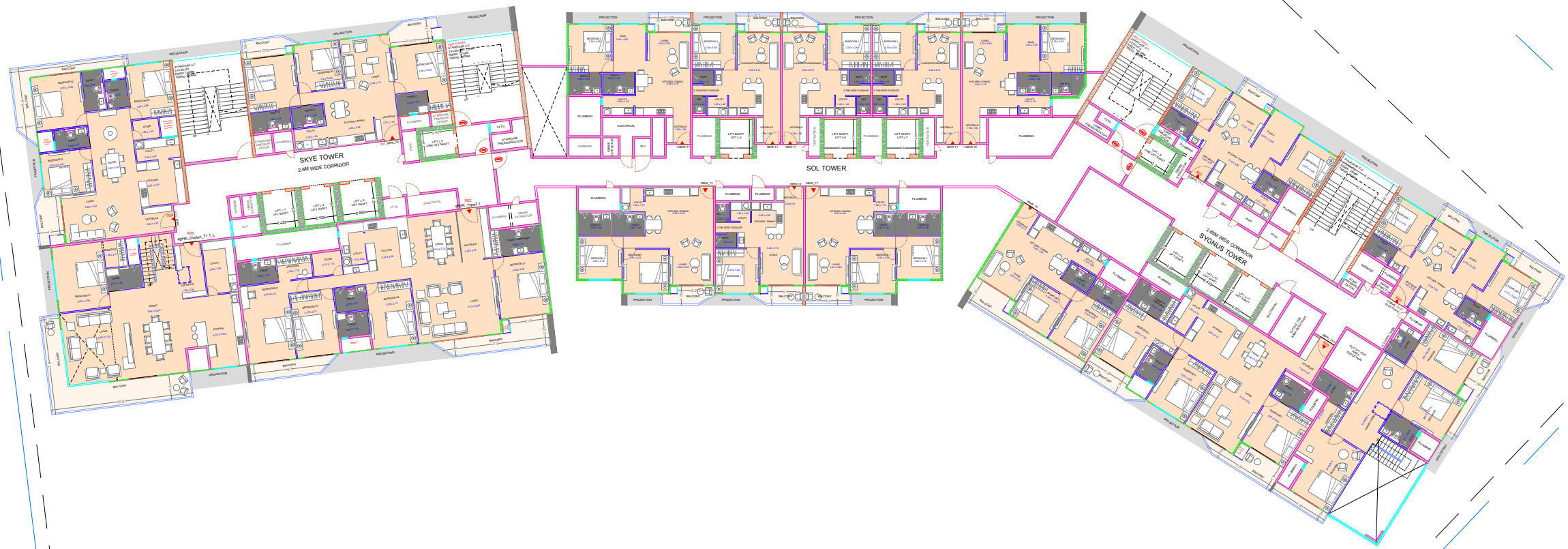
9 Floorplan



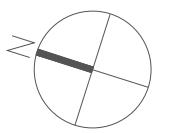
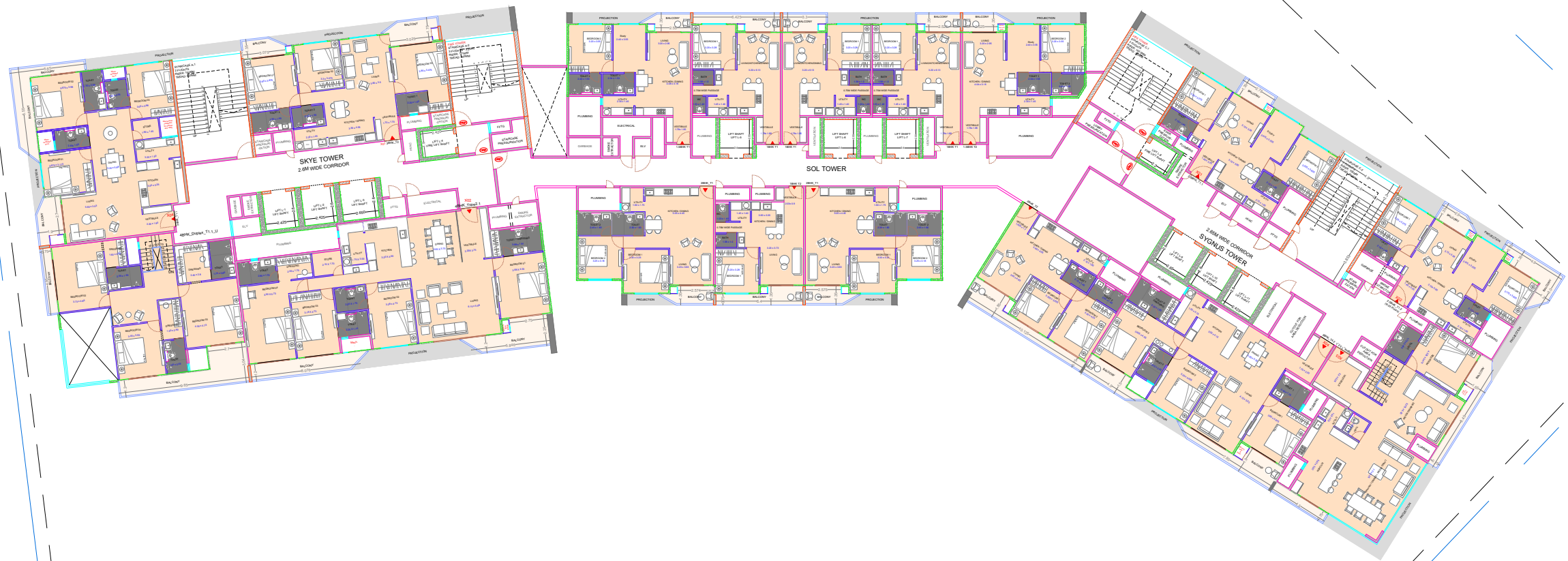


10 Floorplan

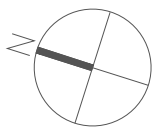
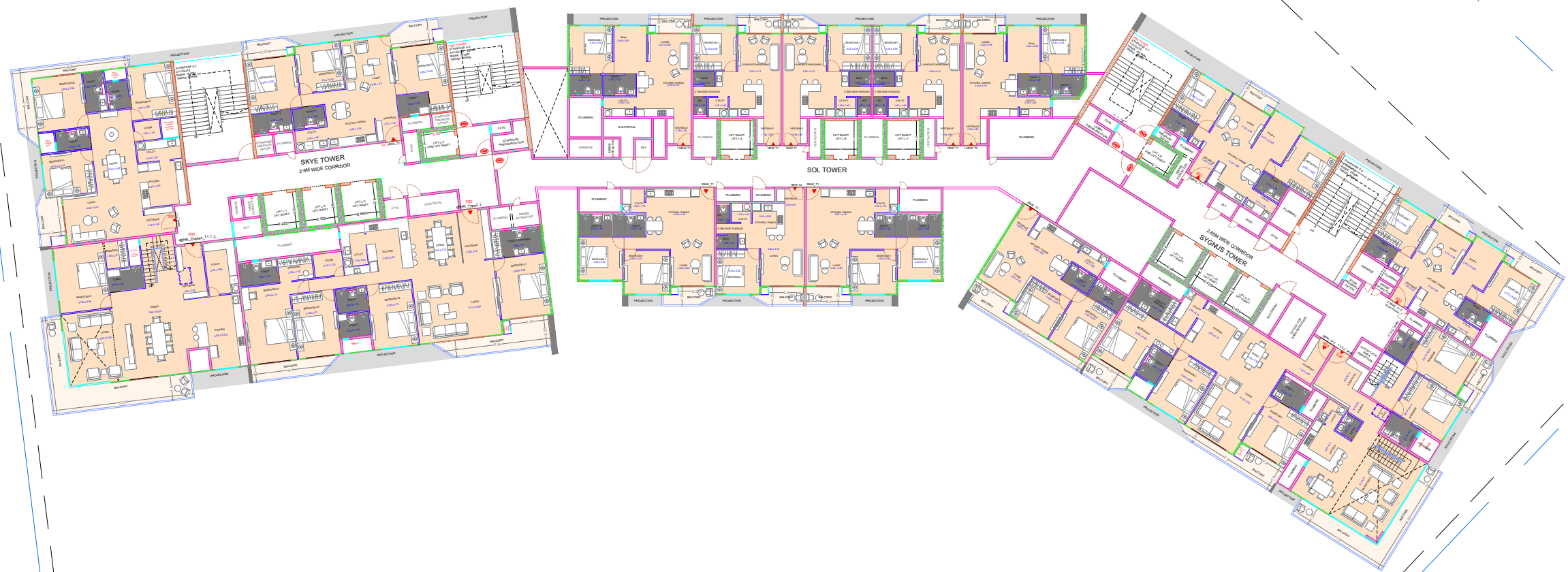




11 Floorplan

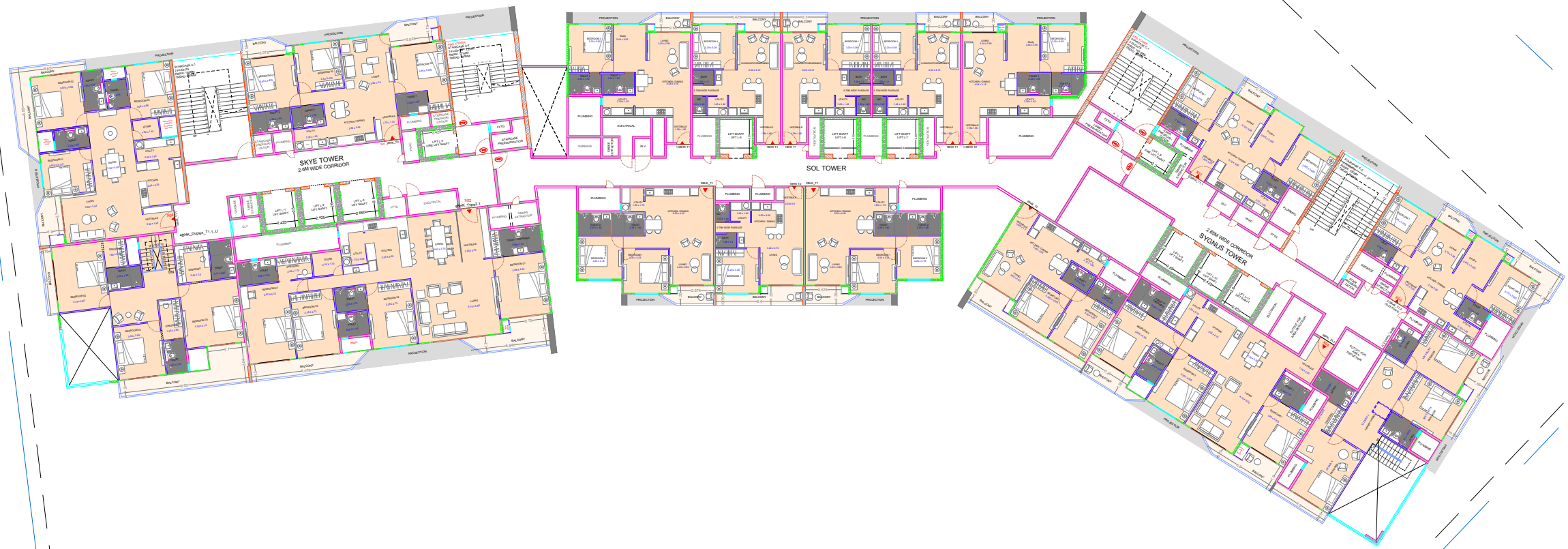


12th Floorplan



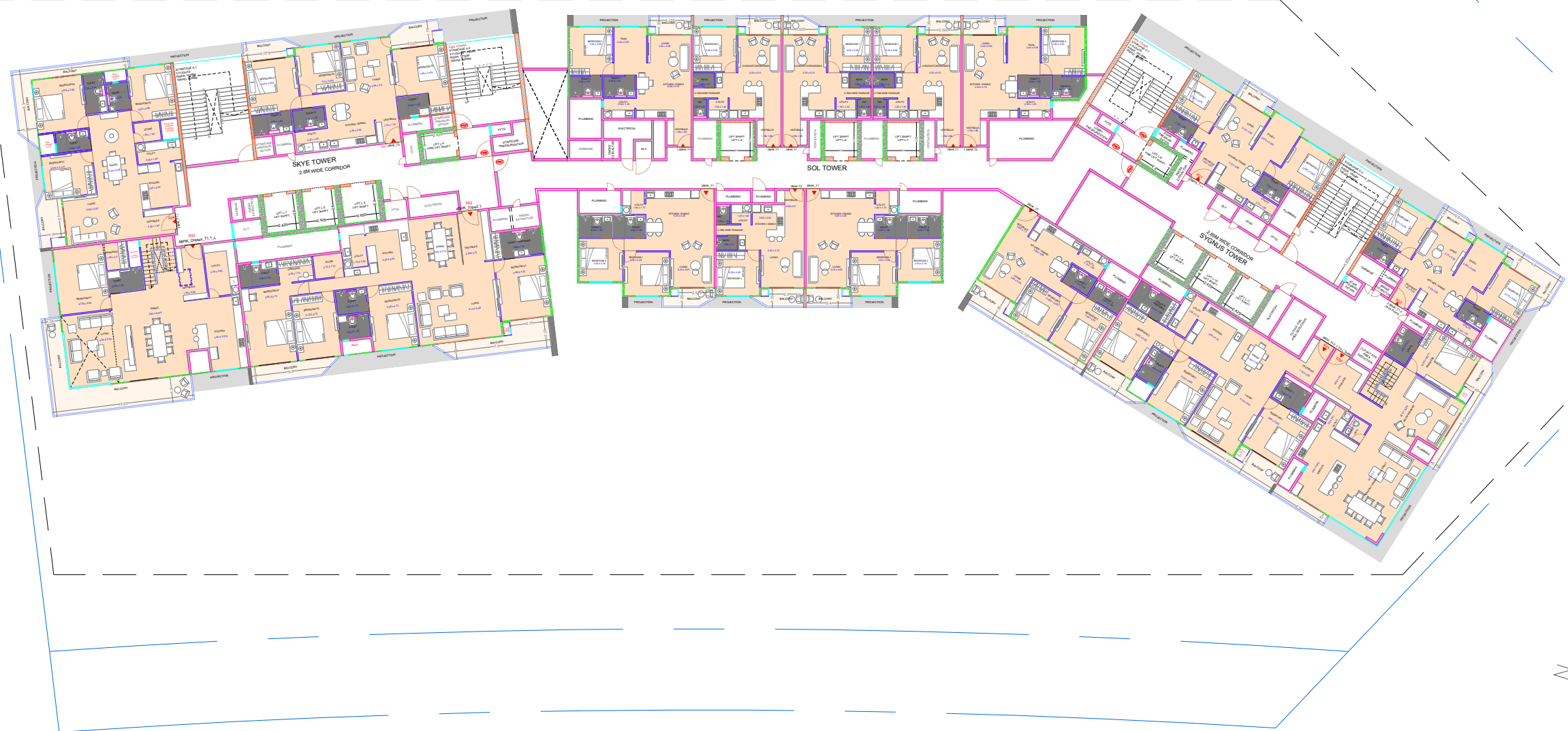
13 Floorplan



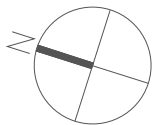
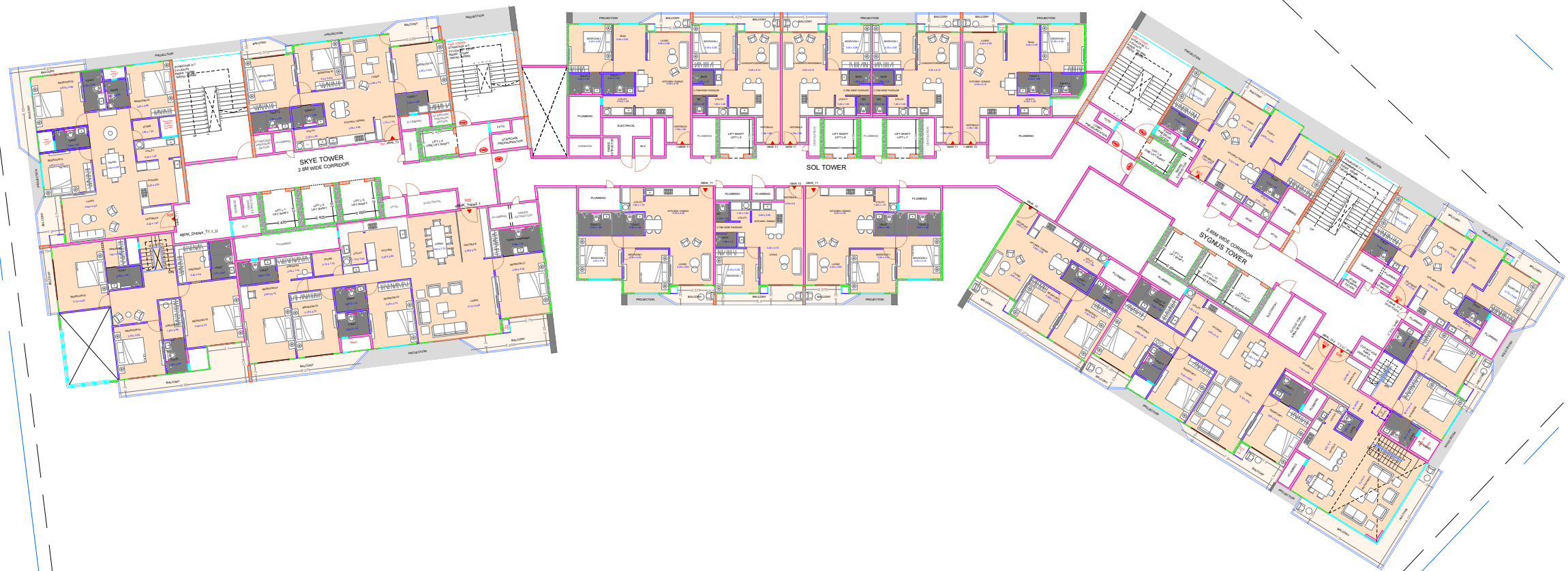


14 Floorplan

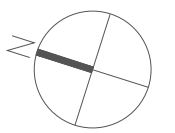
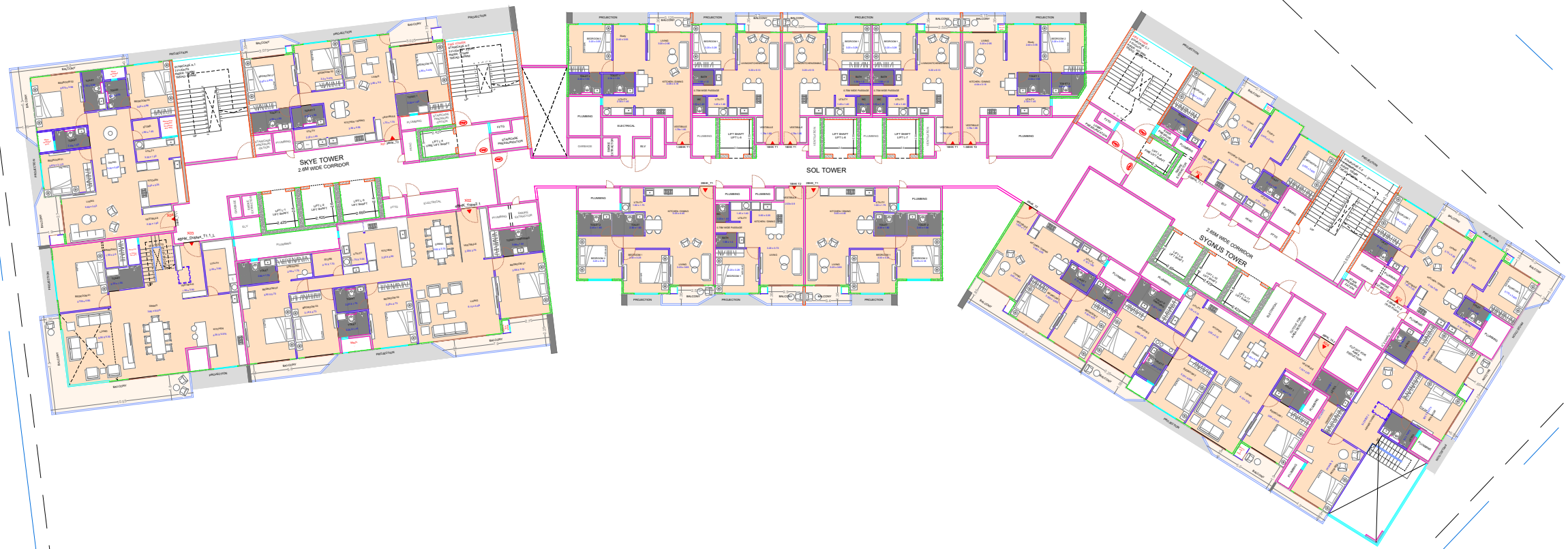




15 Floorplan

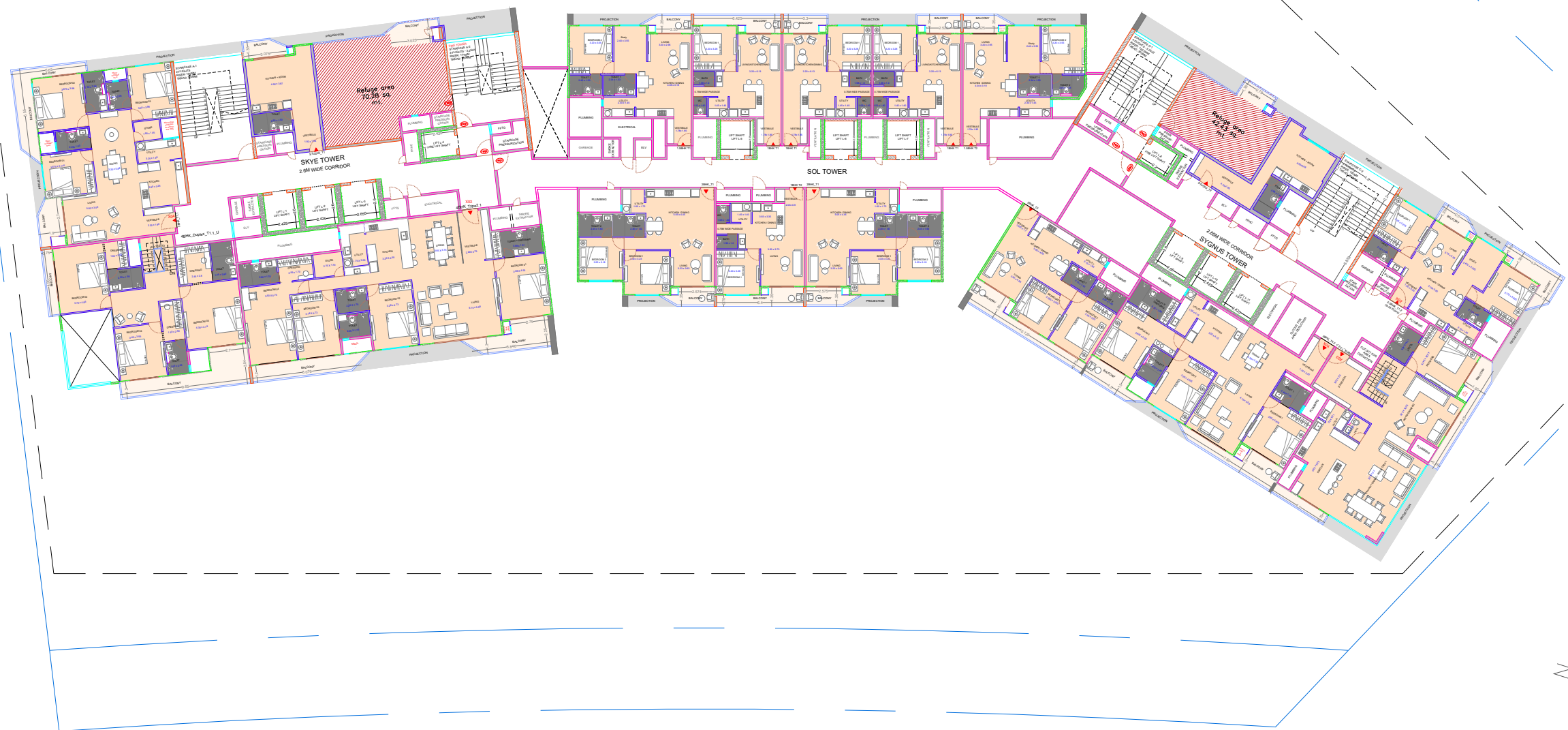


16 Floorplan



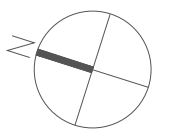
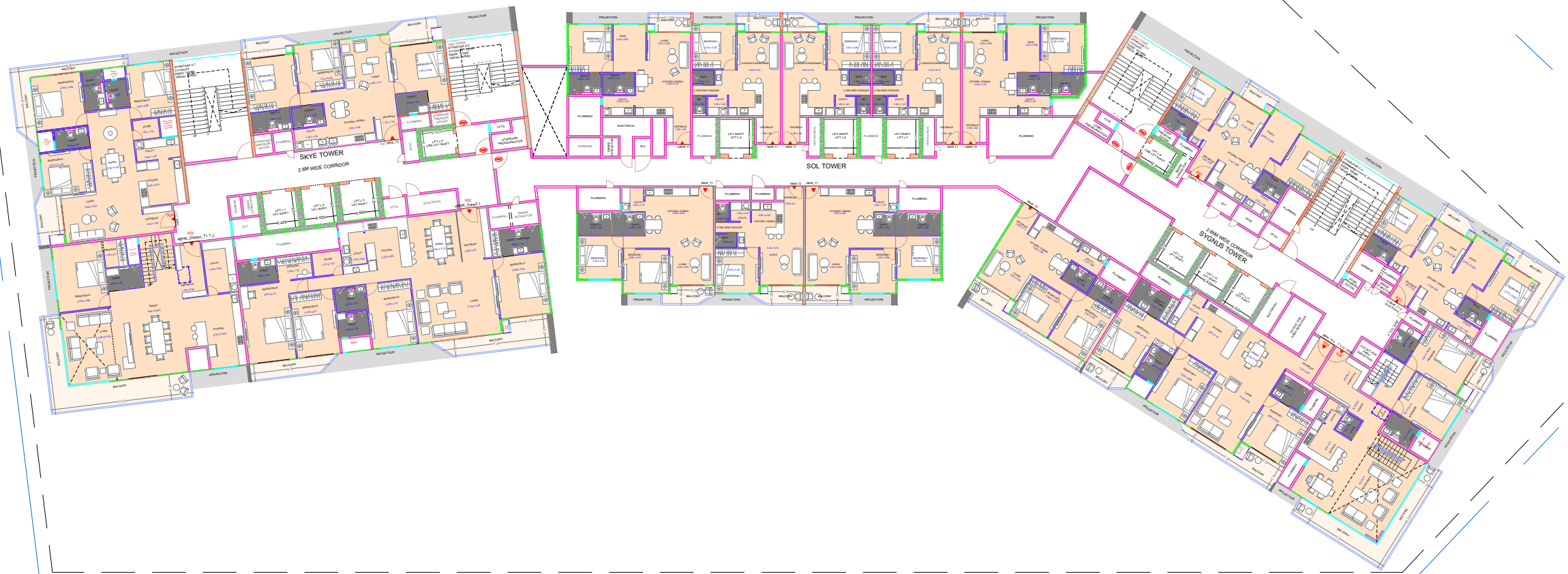
17 Floorplan



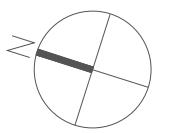
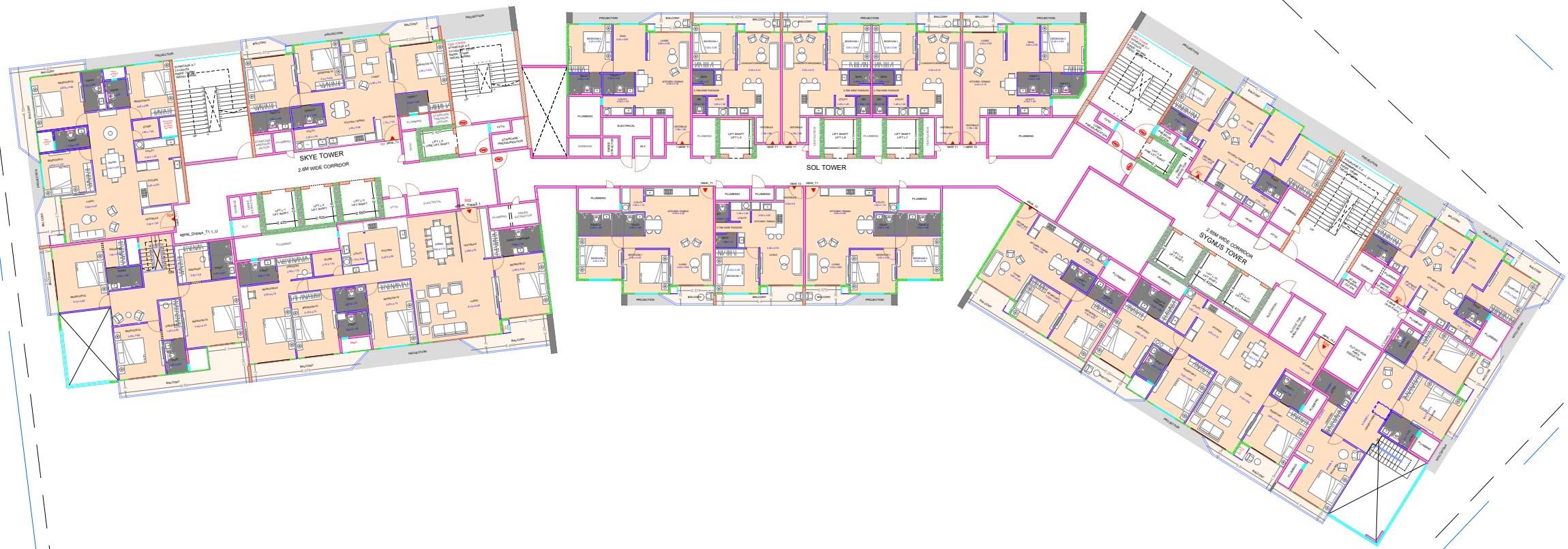


18 Floorplan - Refuge Floor





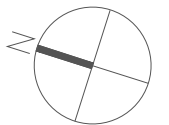
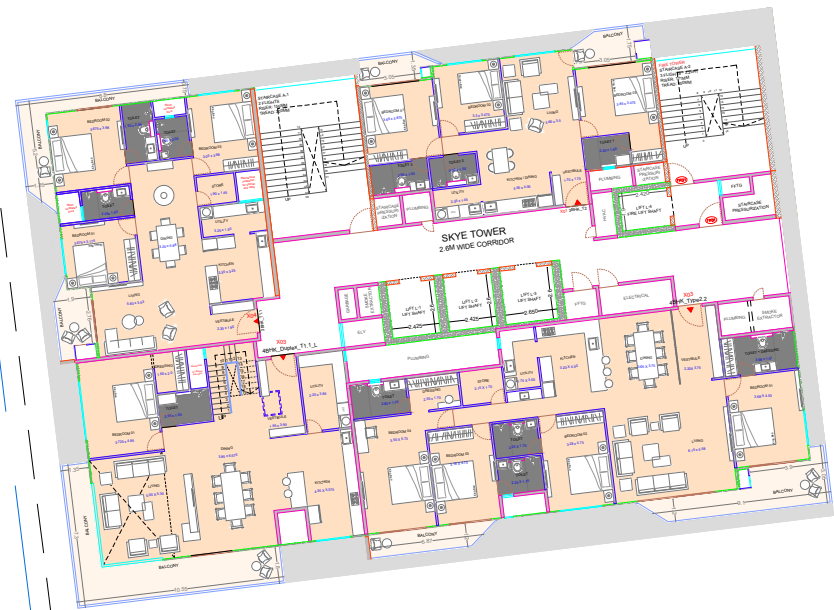
19 Floorplan



20 Floorplan

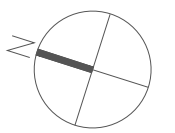


21 Floorplan - Skip Floor

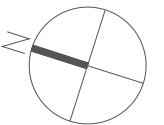
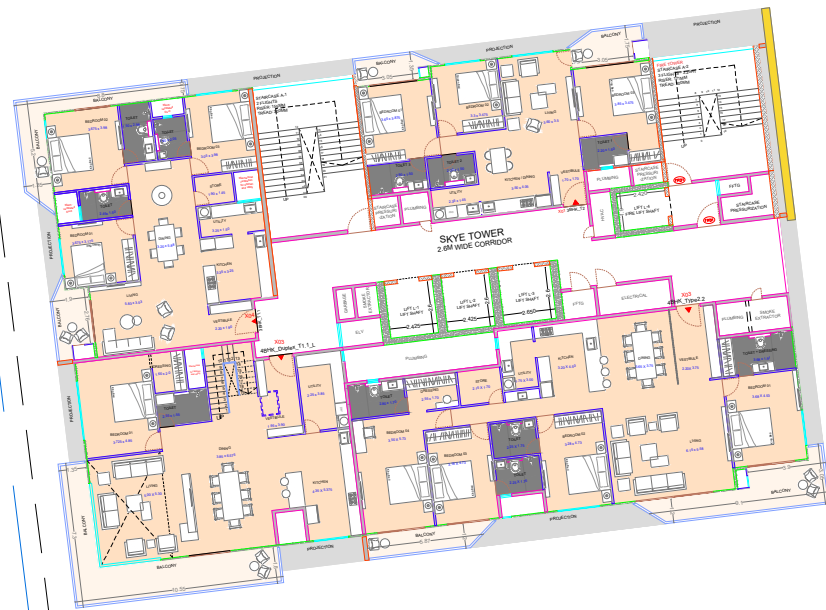


# 22 Floorplan

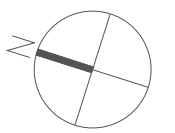




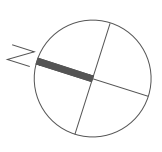
# 23 Floorplan



# 24 Floorplan

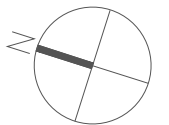
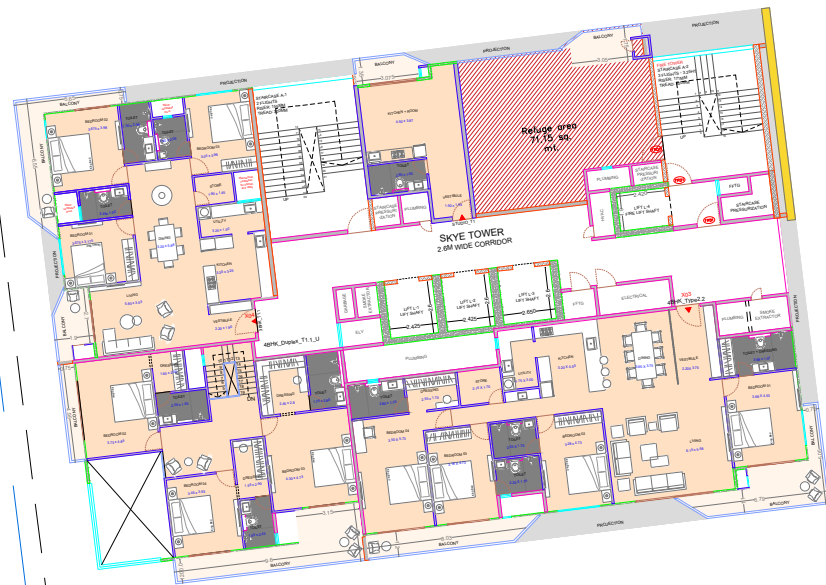


# 25 Floorplan

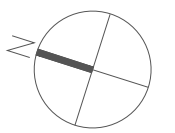


# 26 Floorplan

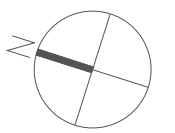




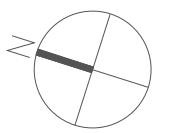
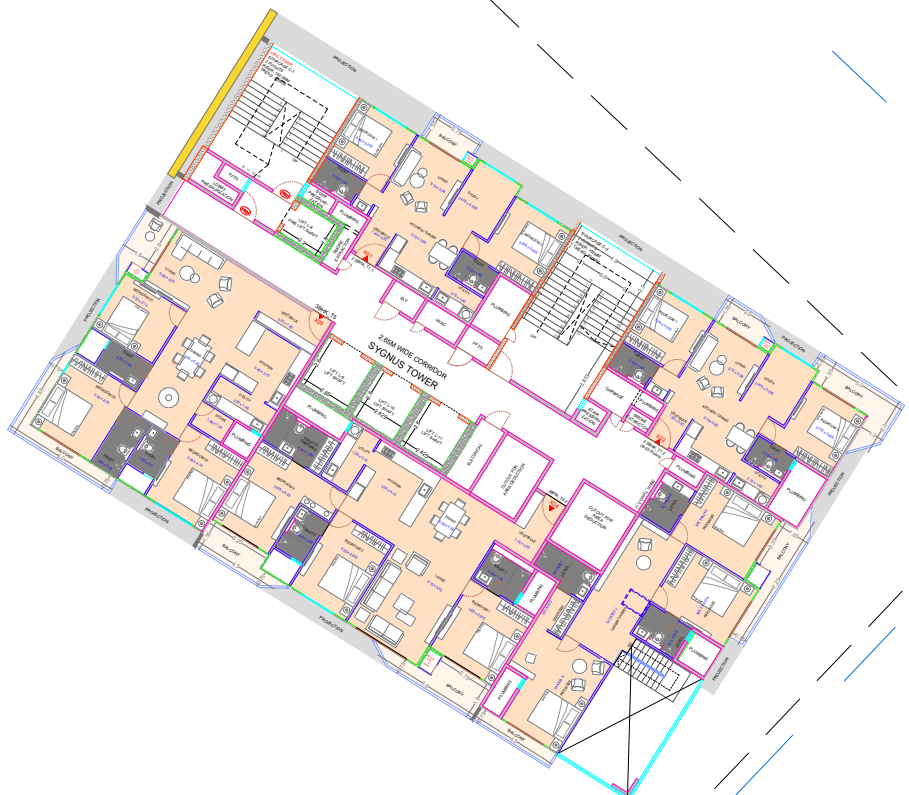
27 Floorplan - Refuge Floor



# 28 Floorplan

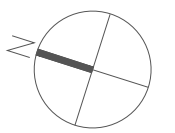


# 29 Floorplan

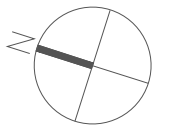


# 30 Floorplan

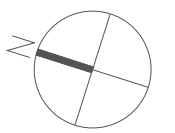




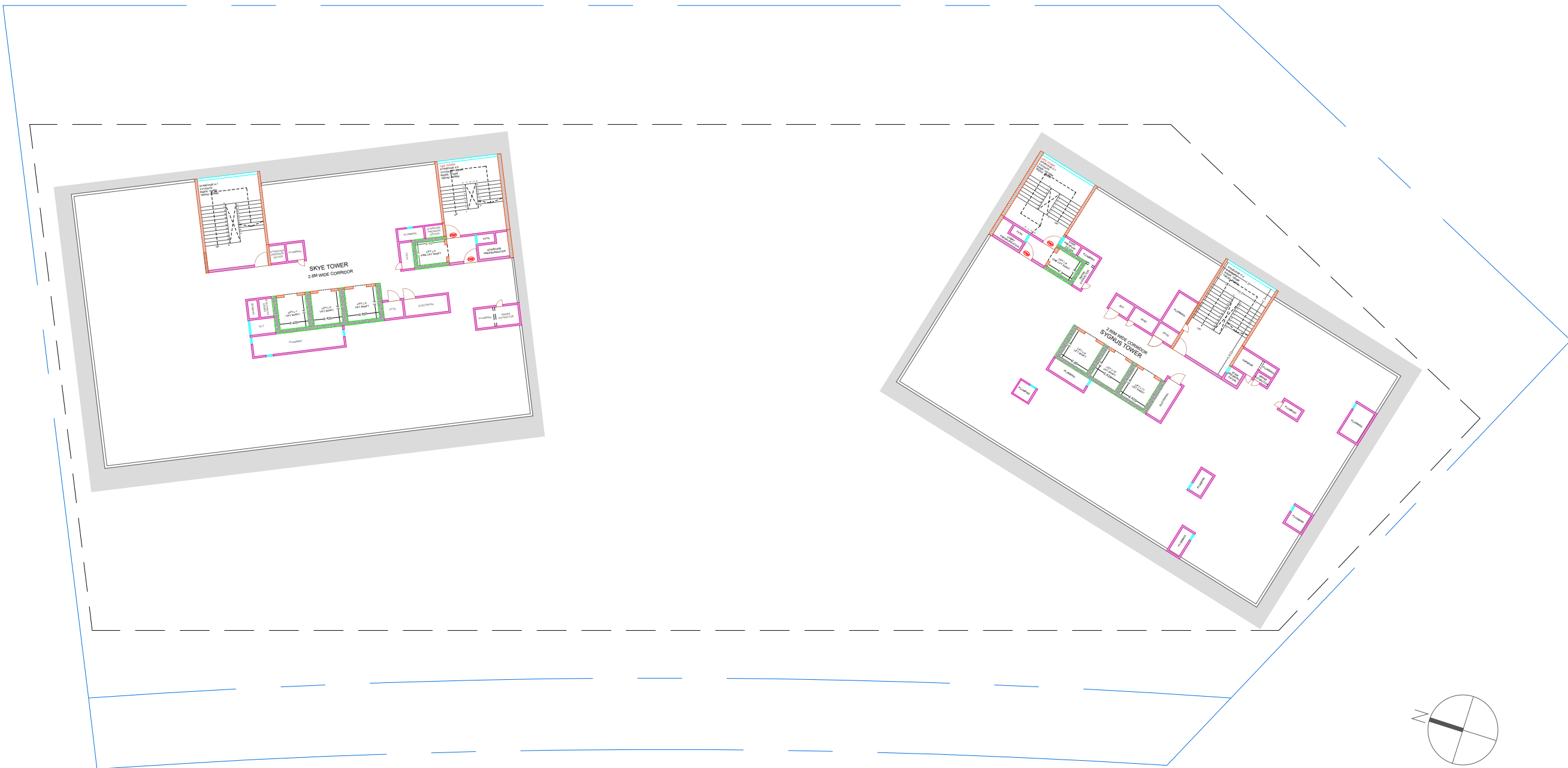
# 31 Floorplan



# 32 Floorplan



# 33 Floorplan



Terrace Level Plan



# Location Map



**bakeri**  
since 1959

Environment is our Attitude™

Site Address:

STELLA - A Riverside Rendezvous  
Building No. 25 D, Block 25, Zone 2  
GIFT CITY, Gandhinagar – 382355

Developer Name:

Bakeri Residences LLP.

Office Address:

"Sanskrut", Near Old High Court,  
Off Ashram Road, Ahmedabad - 380009.

Contact:

079-4000-1300 | +91-9898577877

[sales@bakeri.com](mailto:sales@bakeri.com).