

CODENAME



SONIC ENERGY HOMES

2 & 2.5 BHK HOMES





Artist's Impression



# LOCATION MAP

## KEY DISTANCES

### ENTERTAINMENT

- Carnival Cinemas 3 kms
- Cinepolis Seasons 3.5 kms
- PVR, Phoenix Market City 6 kms

### MALLS

- Mariplex Mall 3.3 kms
- Seasons Mall 3.4 kms
- Amanora Mall 3.6 kms
- Creaticity Mall 5.5 kms
- Phoenix Market city 6 kms

### HOTELS

- Carnival Restaurant 600 mtr
- Marriott Suits 1.5 kms
- The Westin 3 kms
- Radisson Blu 5.4 kms
- Hyatt Regency 5.4 kms

### HOSPITALS

- Ankur Multi-specialiy Hospital 2.9 kms
- Columbia Asia Hospital 4 kms
- Inlaks & Budhrani Hospital 4.2 kms
- Noble Hospital 4.4 kms
- Jehangir Hospital 5.4 kms
- Ruby Hall Clinic 5.7 kms

### WORK-SPACES

- AP 81 Park 1.8 kms
- Magarpatta Cybercity 3.2 kms
- Cerebrum IT Park, Kalyani Nagar 3.4 kms
- Weikfield IT Citi, Viman Nagar 5.6 kms
- World Trade Centre 6.1 kms
- EON Free Zone 6.6 kms
- Mantri Business Park, Viman Nagar 7 kms

### EDUCATION

- VIBGYOR High School, Magarpatta 2 kms
- St. Oscar Convent High School 2.9 kms
- The Bishop's Co-Ed School, Kalyani Nagar 3.6 kms
- The HDFC school, Magarpatta 4.5 kms
- Don Bosco Youth Centre 4.5 kms
- The Orbis School 4.5 kms

### CONNECTIVITY

- Pune Passport Office 850 mtr
- Hadapsar Railway Station 1.4 kms
- Pune Railway Station 6 kms
- Pune International Airport 6.5 kms
- Pune Station Bus Stand 6.9 kms







MASTER LAYOUT PLAN

LEGENDS

- 1 CHILDREN'S PLAY AREA
- 2 OPEN GYM
- 3 MEDITATION AREA
- 4 LANDSCAPE GARDEN

- 5 SENIOR CITIZEN SIT-OUT-AREA
- 6 STAGE
- 7 BARBEQUE AREA

- 8 SEATING AREA
- 9 SWIMMING POOL
- 10 CLUB HOUSE

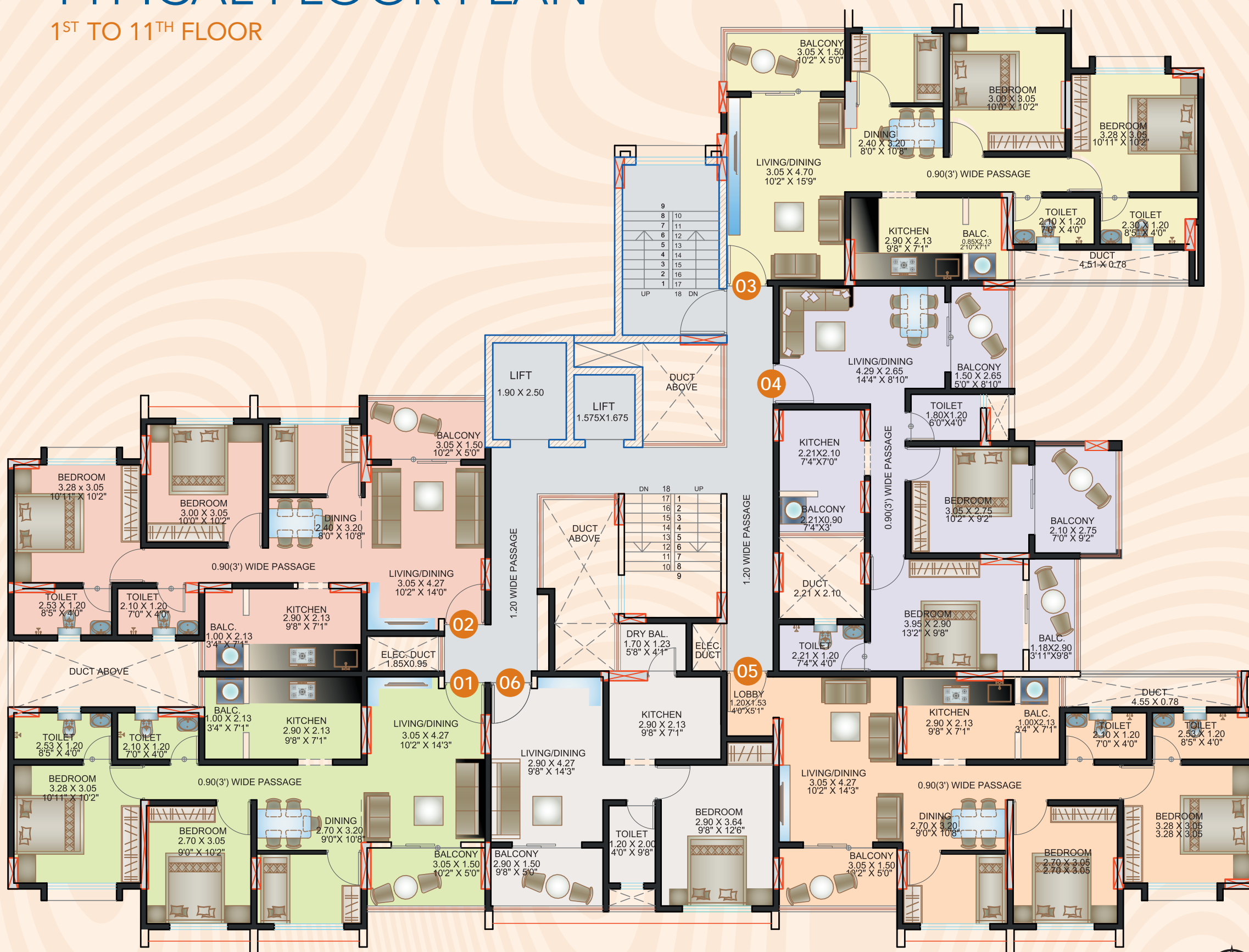


# FLOOR PLANS



# TYPICAL FLOOR PLAN

1<sup>ST</sup> TO 11<sup>TH</sup> FLOOR



CODENAME



SONIC ENERGY HOMES

FLAT NO. 101,201,301,401,501,601,701,801,901,1001,1101  
RERA CARPET AREA

UNIT TYPE	UNIT	CARPET AREA		TOTAL
		FLAT	BALCONY	
2.5BHK	SQ .M	61.16	6.70	67.86
	SQ . FT	658.32	72.11	730.44

FLAT NO.102,202,302,402,502,602,702,802,902,1002,1102  
RERA CARPET AREA

UNIT TYPE	UNIT	CARPET AREA		TOTAL
		FLAT	BALCONY	
2.5BHK	SQ .M	61.07	6.70	67.77
	SQ . FT	657.35	72.11	729.47

FLAT NO. 103,203,303,403,503,603,703,803,903,1003,1103  
RERA CARPET AREA

UNIT TYPE	UNIT	CARPET AREA		TOTAL
		FLAT	BALCONY	
2.5BHK	SQ .M	62.75	6.73	69.48
	SQ . FT	675.44	72.44	747.88

FLAT NO. 104,204,304,404,504,604,704,804,904,1004,1104  
RERA CARPET AREA

UNIT TYPE	UNIT	CARPET AREA		TOTAL
		FLAT	BALCONY	
2 BHK	SQ .M	49.98	15.06	65.04
	SQ . FT	537.98	162.10	700.09

FLAT NO. 105,205,305,405,505,605,705,805,905,1005,1105  
RERA CARPET AREA

UNIT TYPE	UNIT	CARPET AREA		TOTAL
		FLAT	BALCONY	
2.5BHK	SQ .M	63.56	6.70	70.26
	SQ . FT	684.15	72.11	756.27

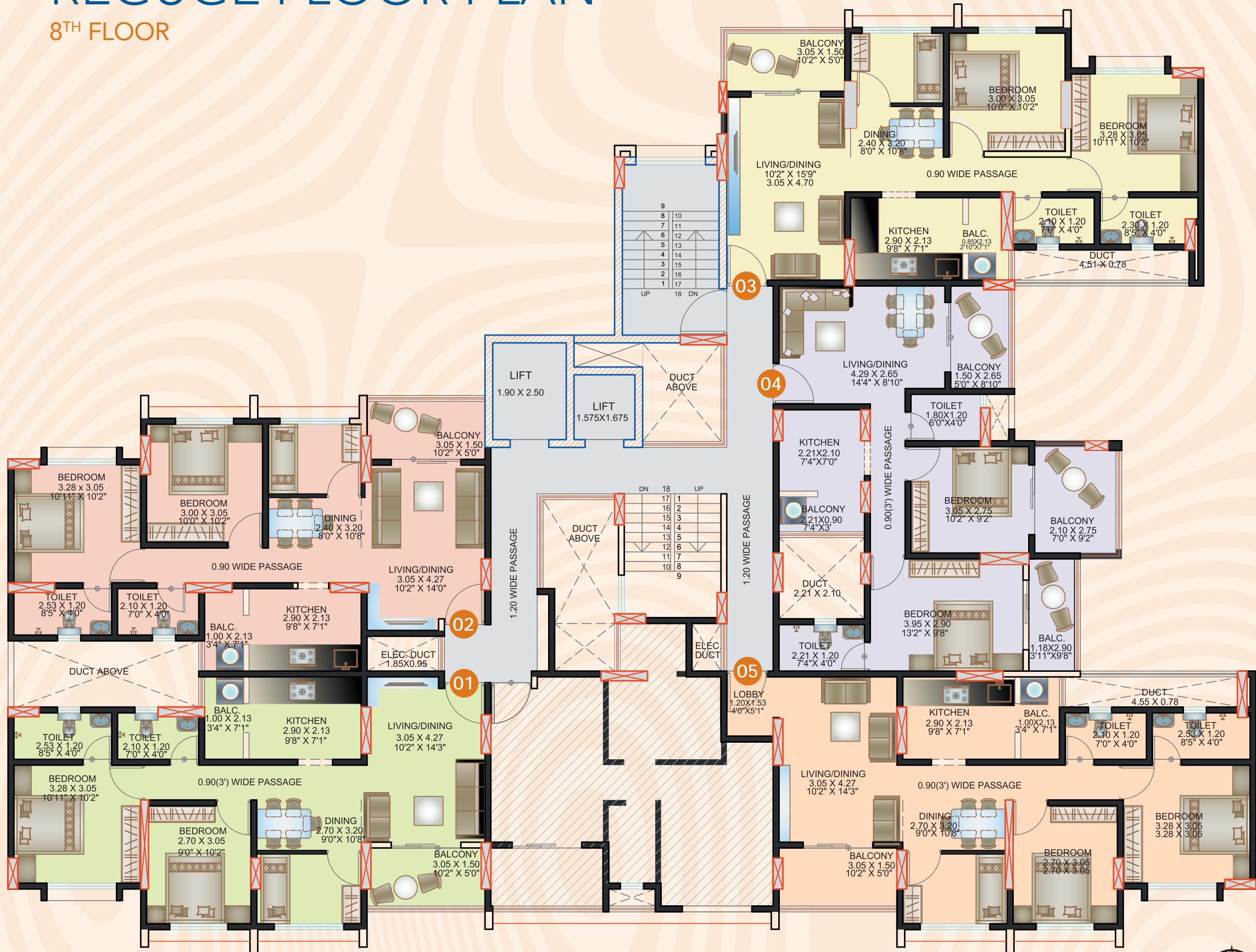
FLAT NO. 106,206,306,406,506,606,706,906,1006,1106  
RERA CARPET AREA

UNIT TYPE	UNIT	CARPET AREA		TOTAL
		FLAT	BALCONY	
1 BHK	SQ .M	35.83	6.44	42.27
	SQ . FT	385.67	69.32	454.99



# REGUGE FLOOR PLAN

8<sup>TH</sup> FLOOR



CODENAME



SONIC ENERGY HOMES

FLAT NO. 101,201,301,401,501,601,701,801,901,1001,1101  
RERA CARPET AREA

UNIT TYPE	UNIT	CARPET AREA		TOTAL
		FLAT	BALCONY	
2.5BHK	SQ .M	61.16	6.70	67.86
	SQ . FT	658.32	72.11	730.44

FLAT NO. 102,202,302,402,502,602,702,802,902,1002,1102  
RERA CARPET AREA

UNIT TYPE	UNIT	CARPET AREA		TOTAL
		FLAT	BALCONY	
2.5BHK	SQ .M	61.07	6.70	67.77
	SQ . FT	657.35	72.11	729.47

FLAT NO. 103,203,303,403,503,603,703,803,903,1003,1103  
RERA CARPET AREA

UNIT TYPE	UNIT	CARPET AREA		TOTAL
		FLAT	BALCONY	
2.5BHK	SQ .M	62.75	6.73	69.48
	SQ . FT	675.44	72.44	747.88

FLAT NO. 104,204,304,404,504,604,704,804,904,1004,1104  
RERA CARPET AREA

UNIT TYPE	UNIT	CARPET AREA		TOTAL
		FLAT	BALCONY	
2 BHK	SQ .M	49.98	15.06	65.04
	SQ . FT	537.98	162.10	700.09

FLAT NO. 105,205,305,405,505,605,705,805,905,1005,1105  
RERA CARPET AREA

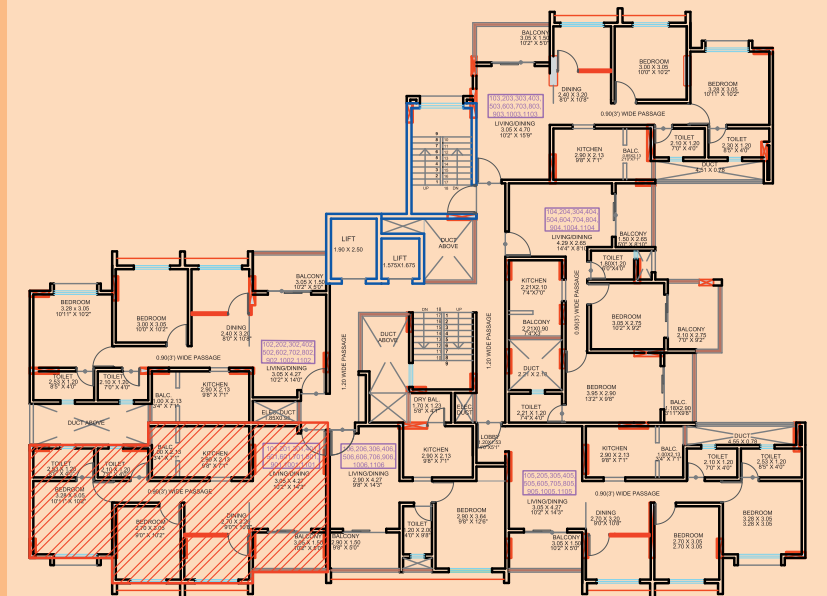
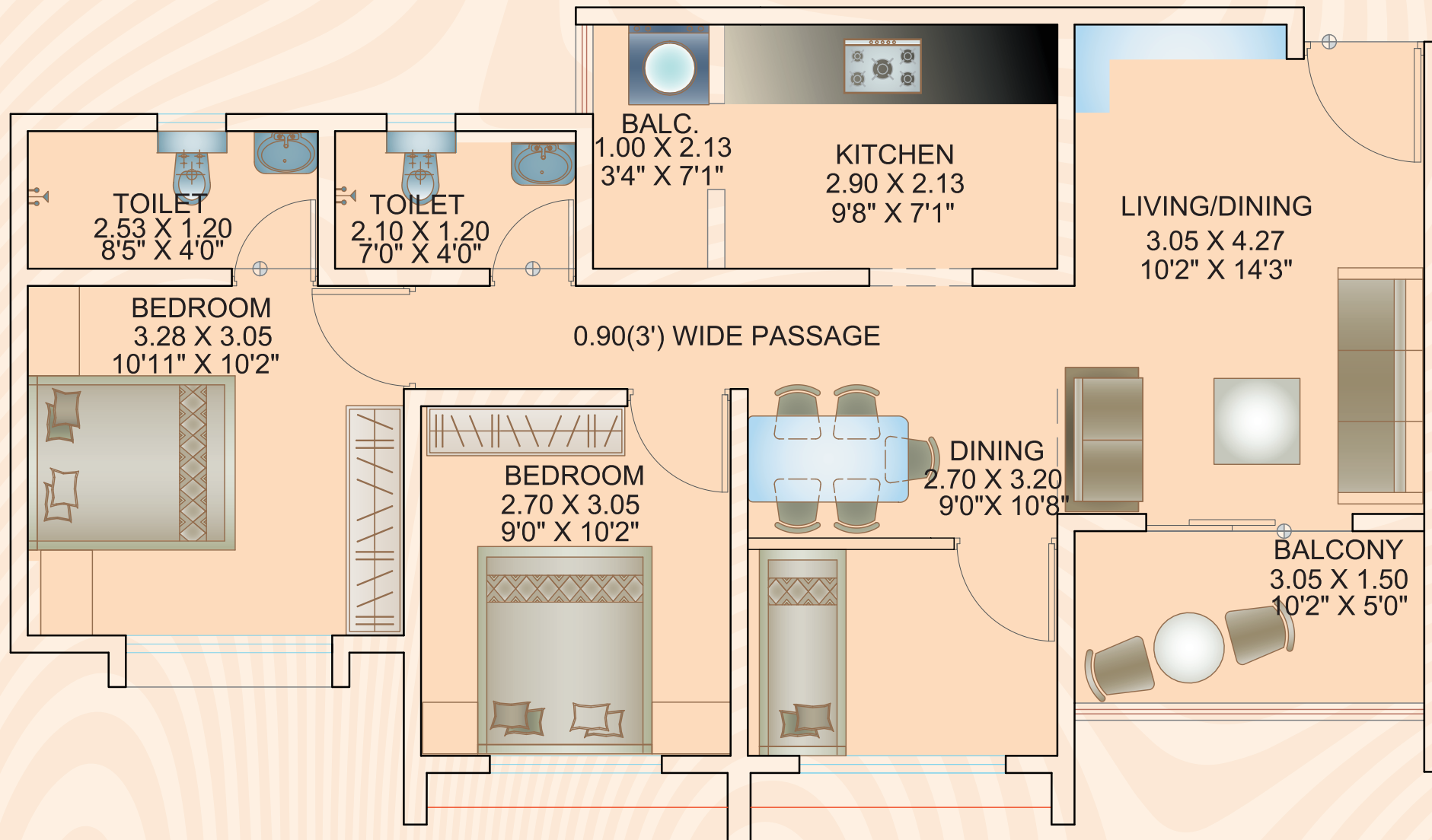
UNIT TYPE	UNIT	CARPET AREA		TOTAL
		FLAT	BALCONY	
2.5BHK	SQ .M	63.56	6.70	70.26
	SQ . FT	684.15	72.11	756.27



# UNIT PLANS



# 2.5 BHK TYPICAL UNIT FLOOR PLAN

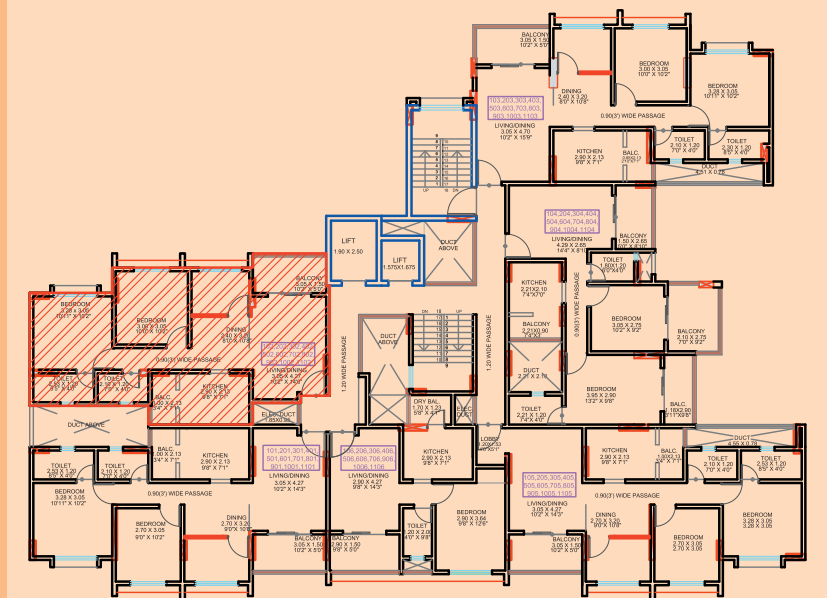
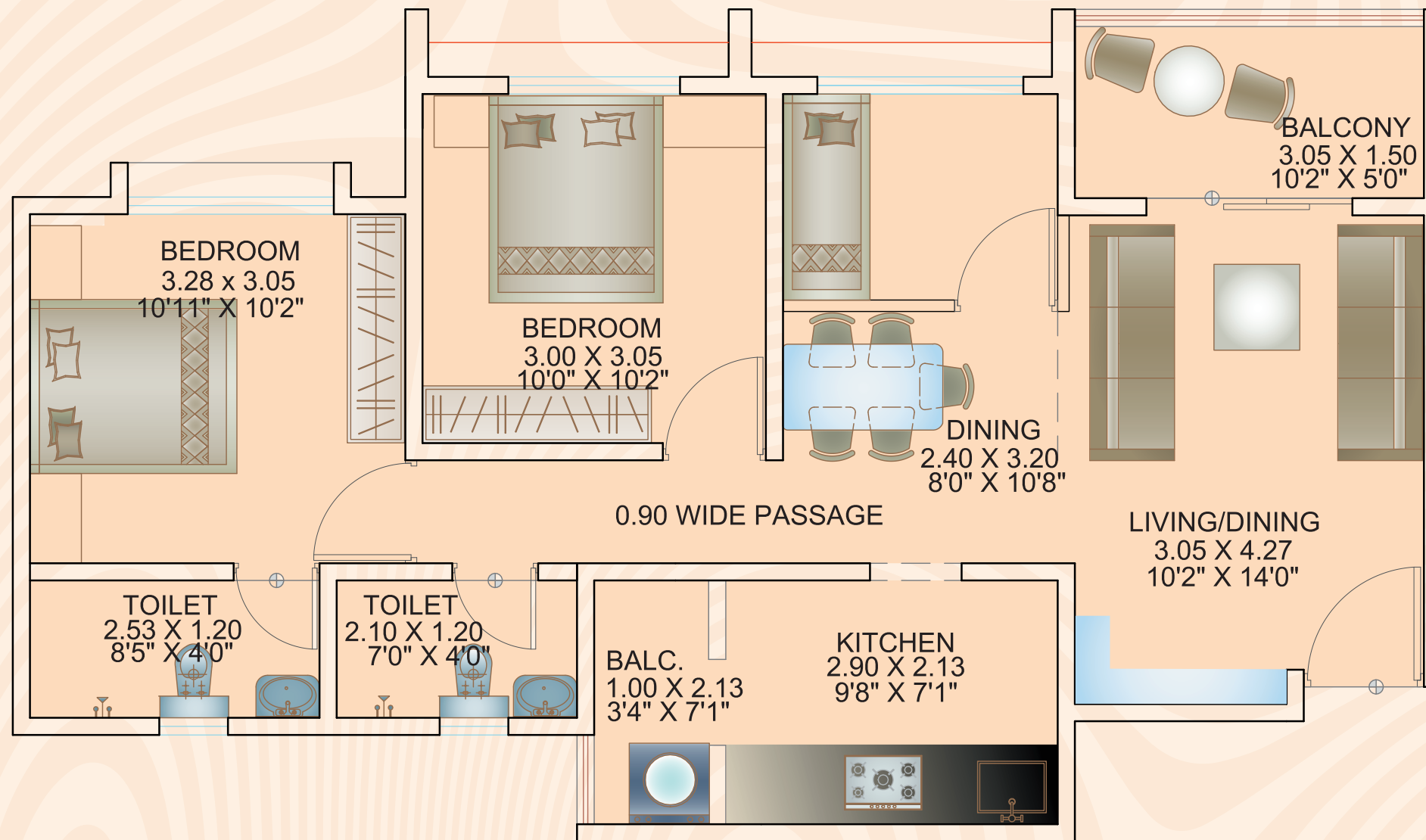


FLAT NO. 101,201,301,401,501,601,701,801,901,1001,1101  
 RERA CARPET AREA

UNIT TYPE	UNIT	CARPET AREA		TOTAL
		FLAT	BALCONY	
2.5 BHK	SQ .M	61.16	6.70	67.86
	SQ . FT	658.32	72.11	730.44



# 2.5 BHK TYPICAL UNIT FLOOR PLAN

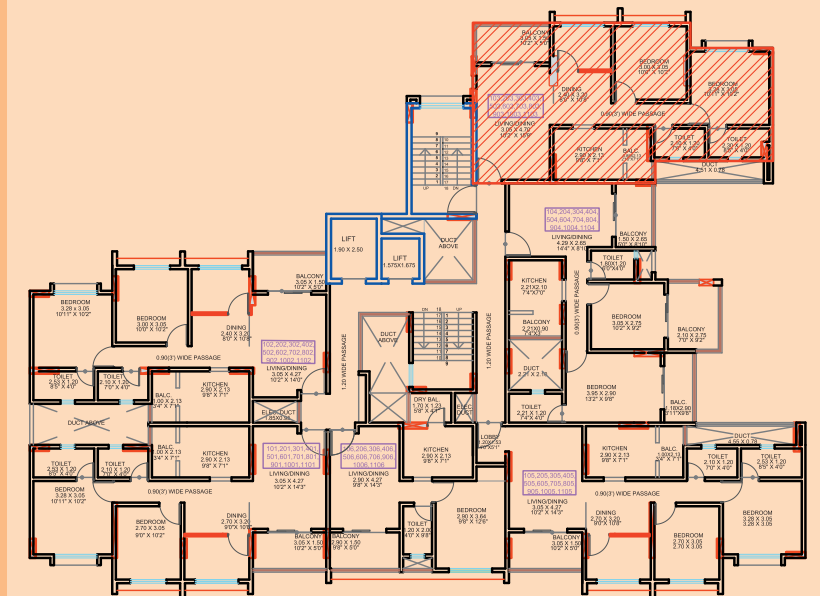
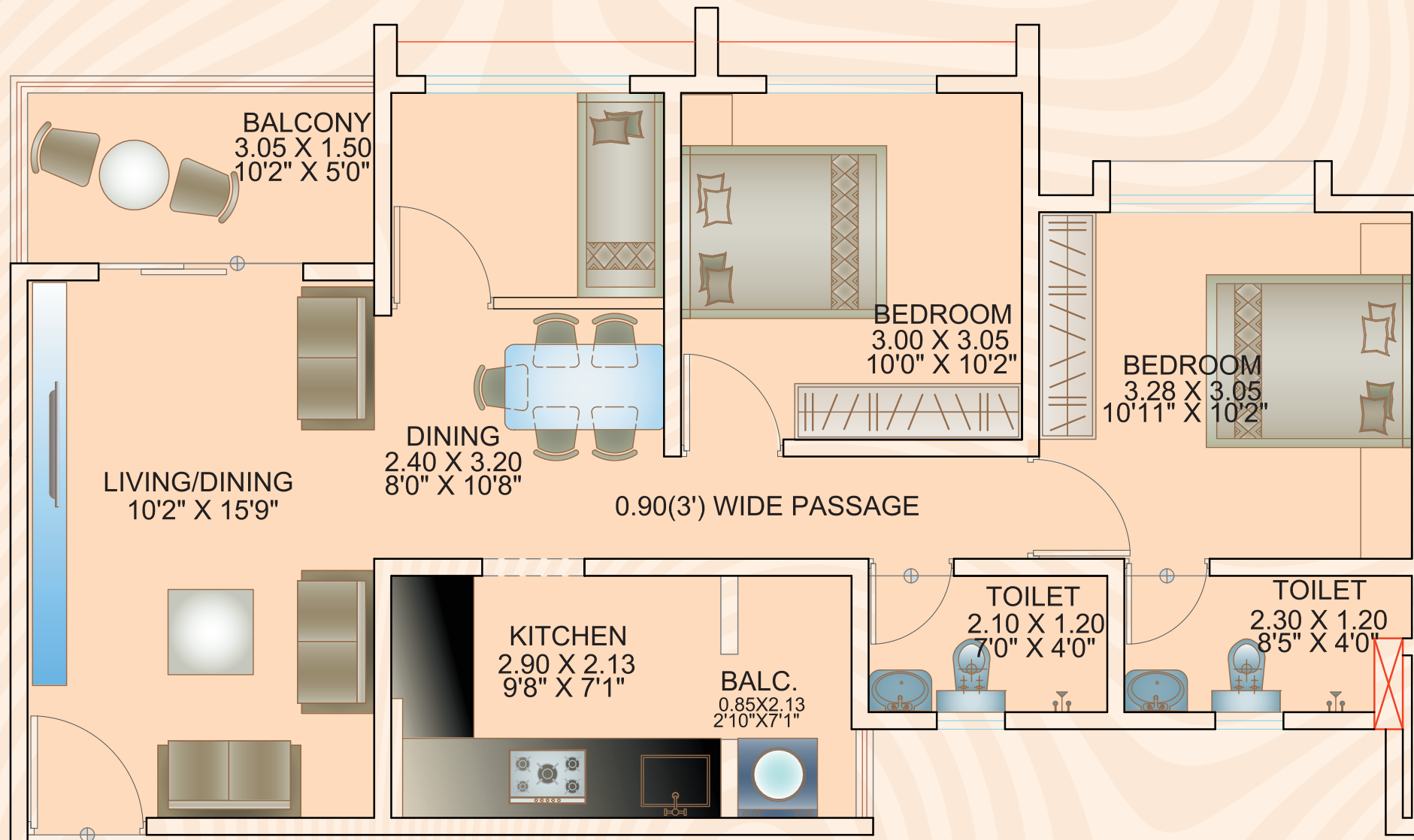


FLAT NO.102,202,302,402,502,602,702,802,902,1002,1102  
 RERA CARPET AREA

UNIT TYPE	UNIT	CARPET AREA		TOTAL
		FLAT	BALCONY	
2.5 BHK	SQ .M	61.07	6.70	67.77
	SQ . FT	657.35	72.11	729.47



# 2.5 BHK TYPICAL UNIT FLOOR PLAN

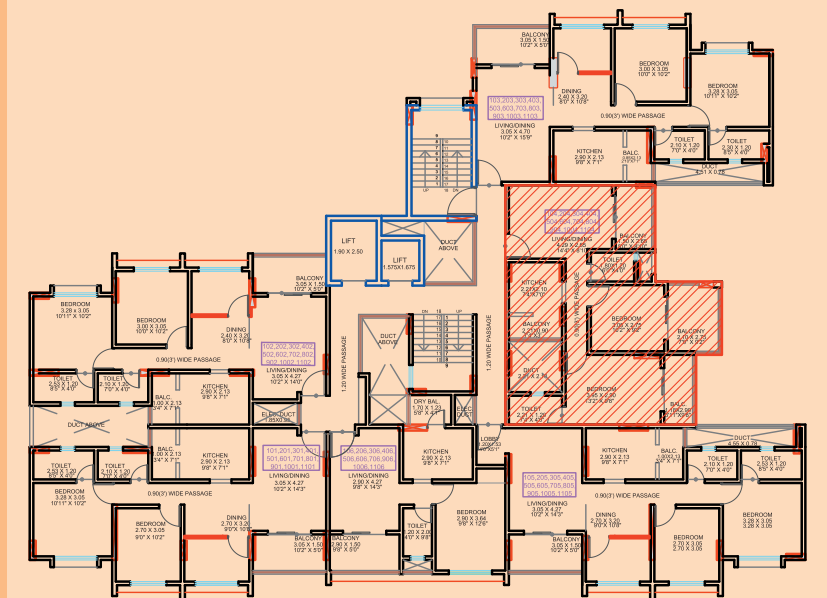
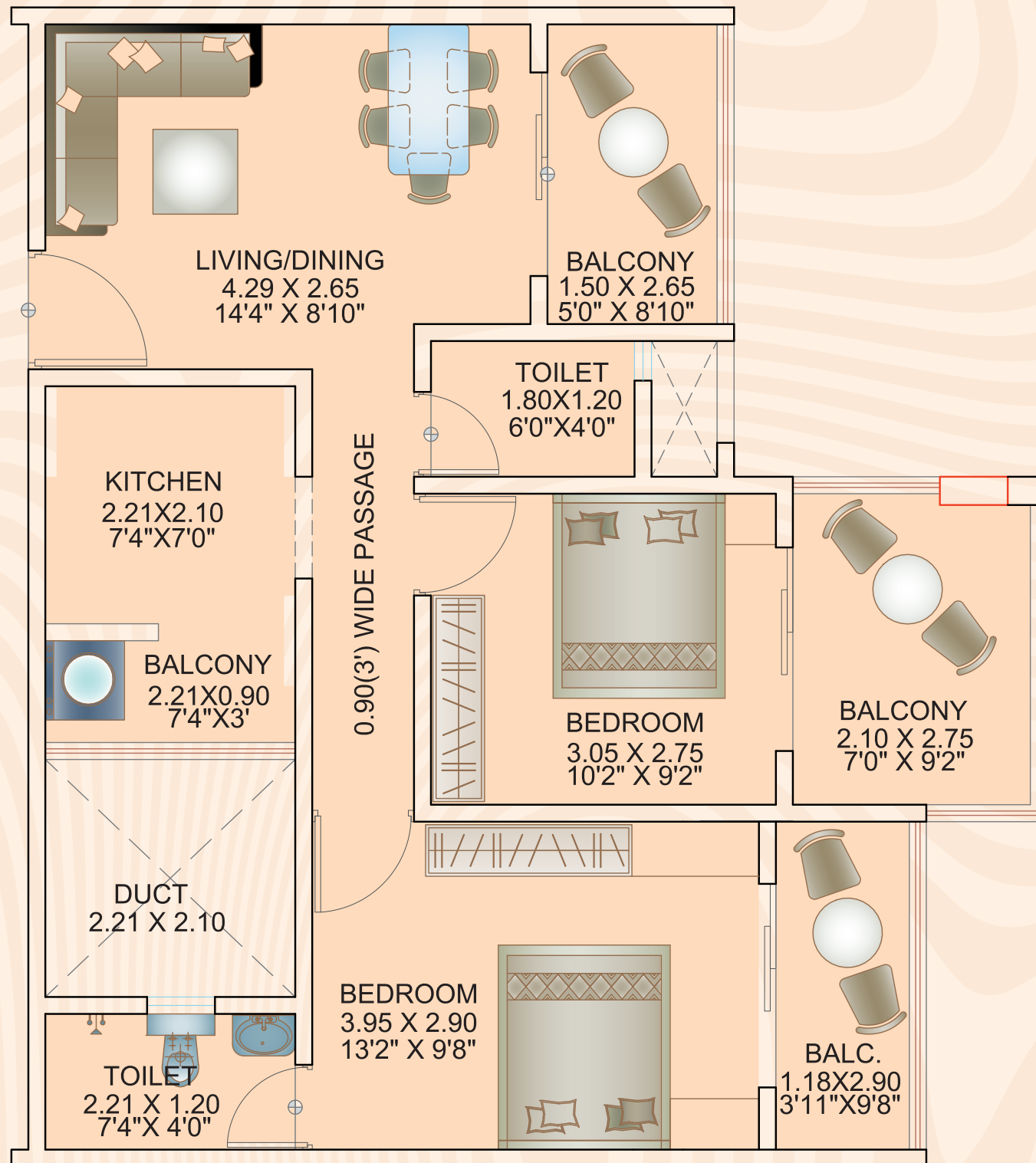


FLAT NO. 103,203,303,403,503,603,703,803,903,1003,1103  
 RERA CARPET AREA

UNIT TYPE	UNIT	CARPET AREA		TOTAL
		FLAT	BALCONY	
2.5 BHK	SQ . M	62.75	6.73	69.48
	SQ . FT	675.44	72.44	747.88



## 2 BHK TYPICAL UNIT FLOOR PLAN



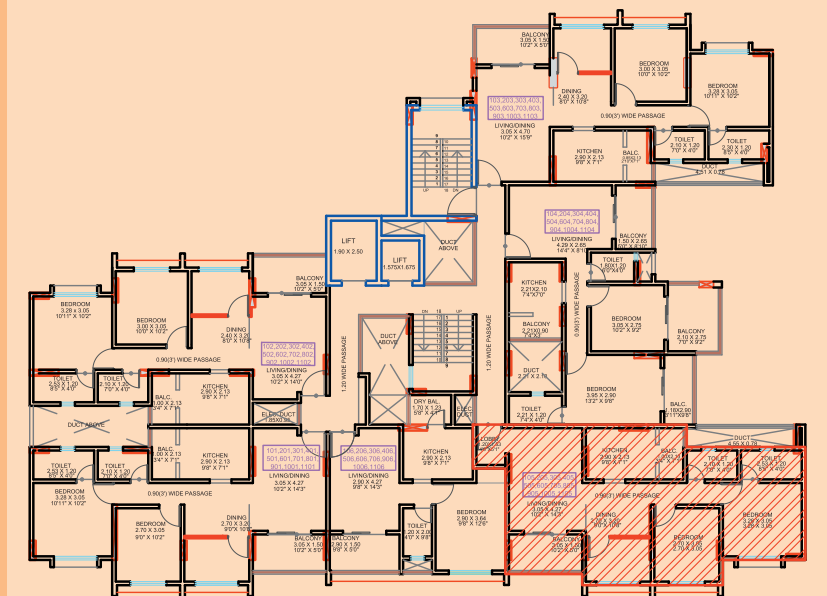
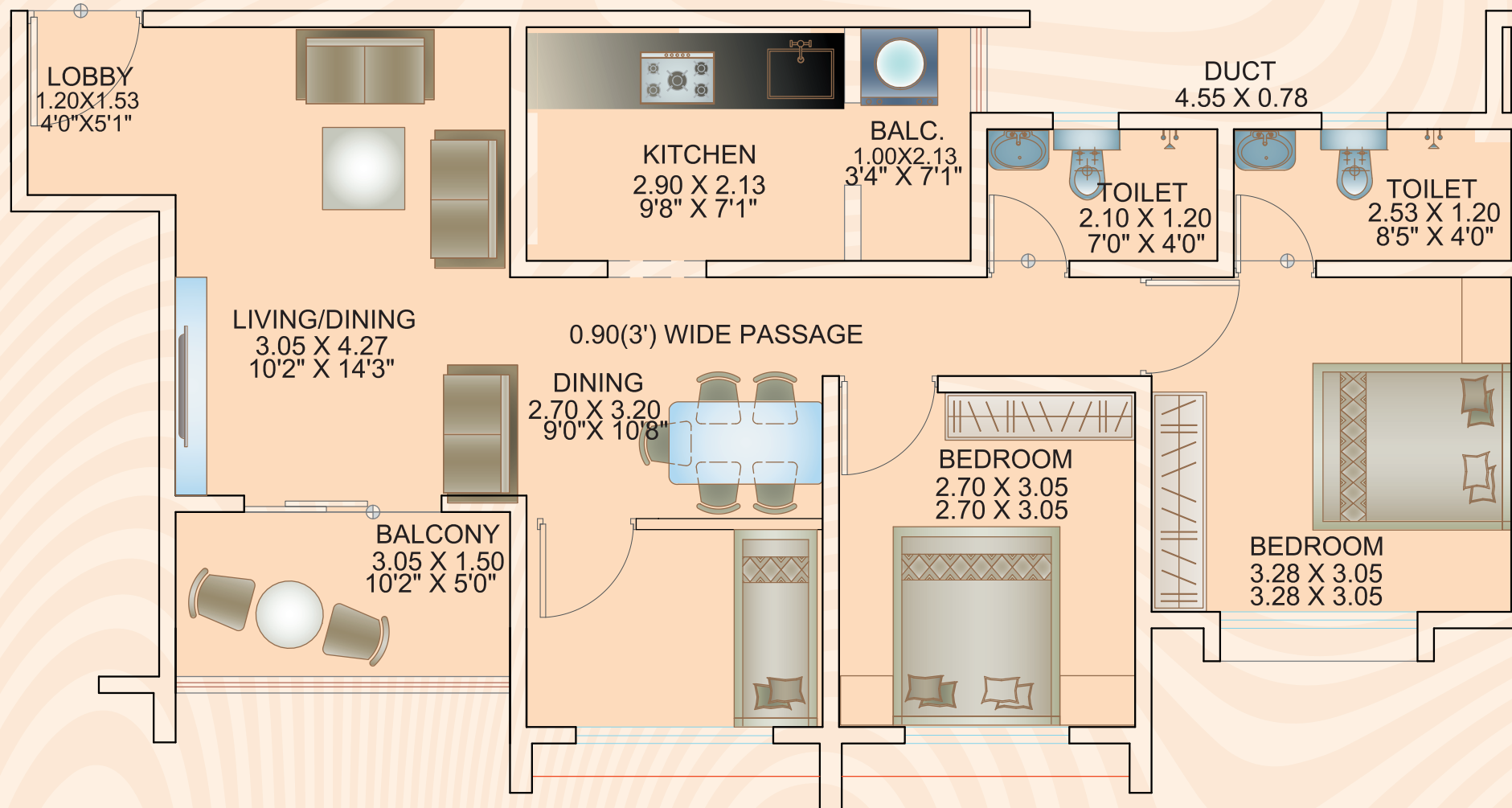
FLAT NO. 104,204,304,404,504,604,704,804,904,1004,1104  
 RERA CARPET AREA

UNIT TYPE	UNIT	CARPET AREA		TOTAL
		FLAT	BALCONY	
2 BHK	SQ .M	49.98	15.06	65.04
	SQ . FT	537.98	162.10	700.09





# 2.5 BHK TYPICAL UNIT FLOOR PLAN



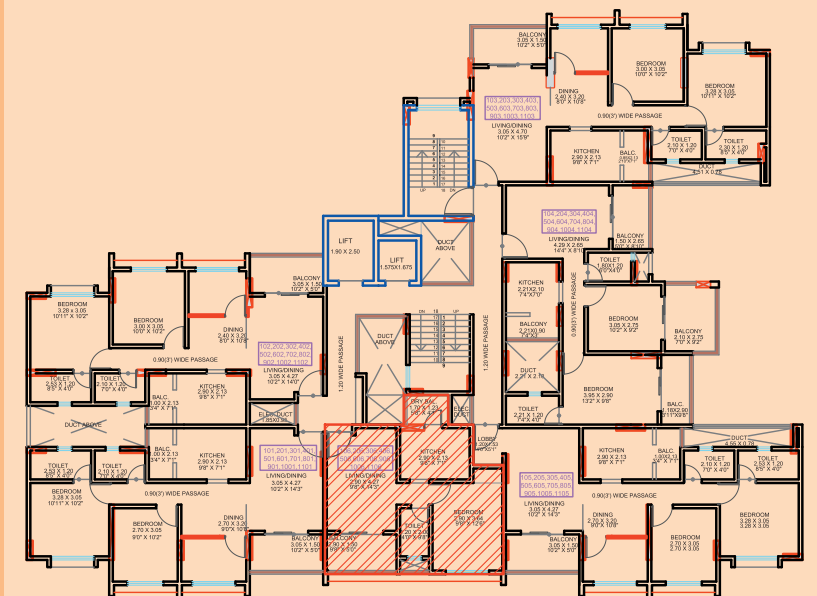
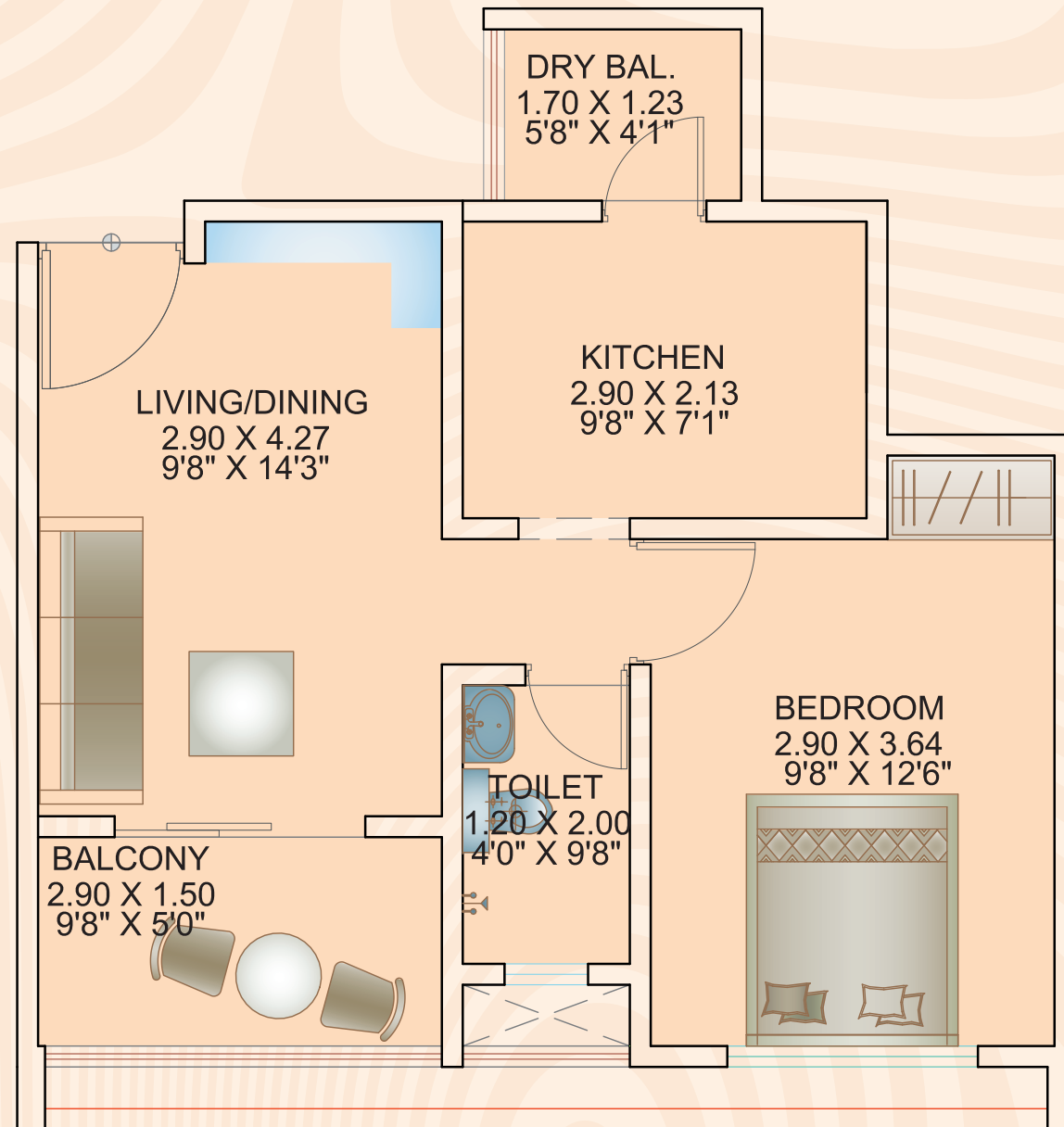
FLAT NO. 105,205,305,405,505,605,705,805,905,1005,1105  
 RERA CARPET AREA

UNIT TYPE	UNIT	CARPET AREA		TOTAL
		FLAT	BALCONY	
2.5 BHK	SQ .M	63.56	6.70	70.26
	SQ . FT	684.15	72.11	756.27





# 1 BHK TYPICAL UNIT FLOOR PLAN



FLAT NO. 106,206,306,406,506,606,706,906,1006,1106  
 RERA CARPET AREA

UNIT TYPE	UNIT	CARPET AREA		TOTAL
		FLAT	BALCONY	
1 BHK	SQ .M	35.83	6.44	42.27
	SQ . FT	385.67	69.32	454.99





## INTERNAL SPECIFICATIONS

### BUILDING

- RCC framed earthquake resistant structure with modern elevation

### FOR RESIDENTIAL TENEMENTS

#### FLOORING

- 24 x 24 vitrified tiles
- Rustic finish anti-skid for attached terraces
- Anti-skid ceramic flooring for toilets

#### KITCHEN

- Granite kitchen platform and stainless-steel sink
- Dado tiles on main kitchen platform up to lintel level
- Provision for exhaust fan
- Provision for water purifier
- Dry Terrace with washing machine point

#### WINDOWS

- Large windows for better ventilation and view
- Powder coated aluminium windows with mosquito net
- Granite window sills

#### ELECTRICAL

- Concealed copper wiring
- Modular Switches of Anchor-Roma or equivalent
- TV and Telephone point in living and master bedroom
- Provision for air conditioner point in master bedroom

### DOORS

- Wide and tall wooden entrance doors
- Decorative laminated doors with ply frames for internal doors
- Waterproof doors with granite frame for bathrooms
- Waterproof door shutters for toilets
- CP powder coated fittings for all internal doors

### TOILETS

- Designer tiles up to lintel level in all toilets
- Hot and Cold Mixer unit for all shower areas
- Jaguar or equivalent fittings in all toilets and bathrooms.

### WALLS AND PAINTING

- Gypsum finish for all walls
- Water emulsion paint for entire plot
- External paint - Apex or equivalent



GRAND ENTRANCE LOBBY



SWIMMING POOL



MULTIPURPOSE COMMUNITY HALL



A PROJECT BY



**SITE ADDRESS:**

Konifer, Survey No. 89A/11P, Lane No. 2, Dhayarkar Colony, Koregaon Park Annexe, Mundhwa, Pune - 411036