



The  
Islands  
by GAURS  
BE APART

DISCOVER THE DIFFERENCE BETWEEN  
LIVING AND LIVING APART!

**GAURS**  
your own world

 RERA REGISTRATION NO.: UPRERAPRJ734569 | [WWW.UP-RERA.IN](http://WWW.UP-RERA.IN)







LIVING APART IS A LANGUAGE  
SHARED BY YOU AND NATURE AT ITS BEST.



WHEN LIFE AND LIFESTYLE BREATHE LUXURY,  
THAT IS LIVING APART

*Unveiling Your Own Private Island*



## *The lifestyle of those who Live Apart*

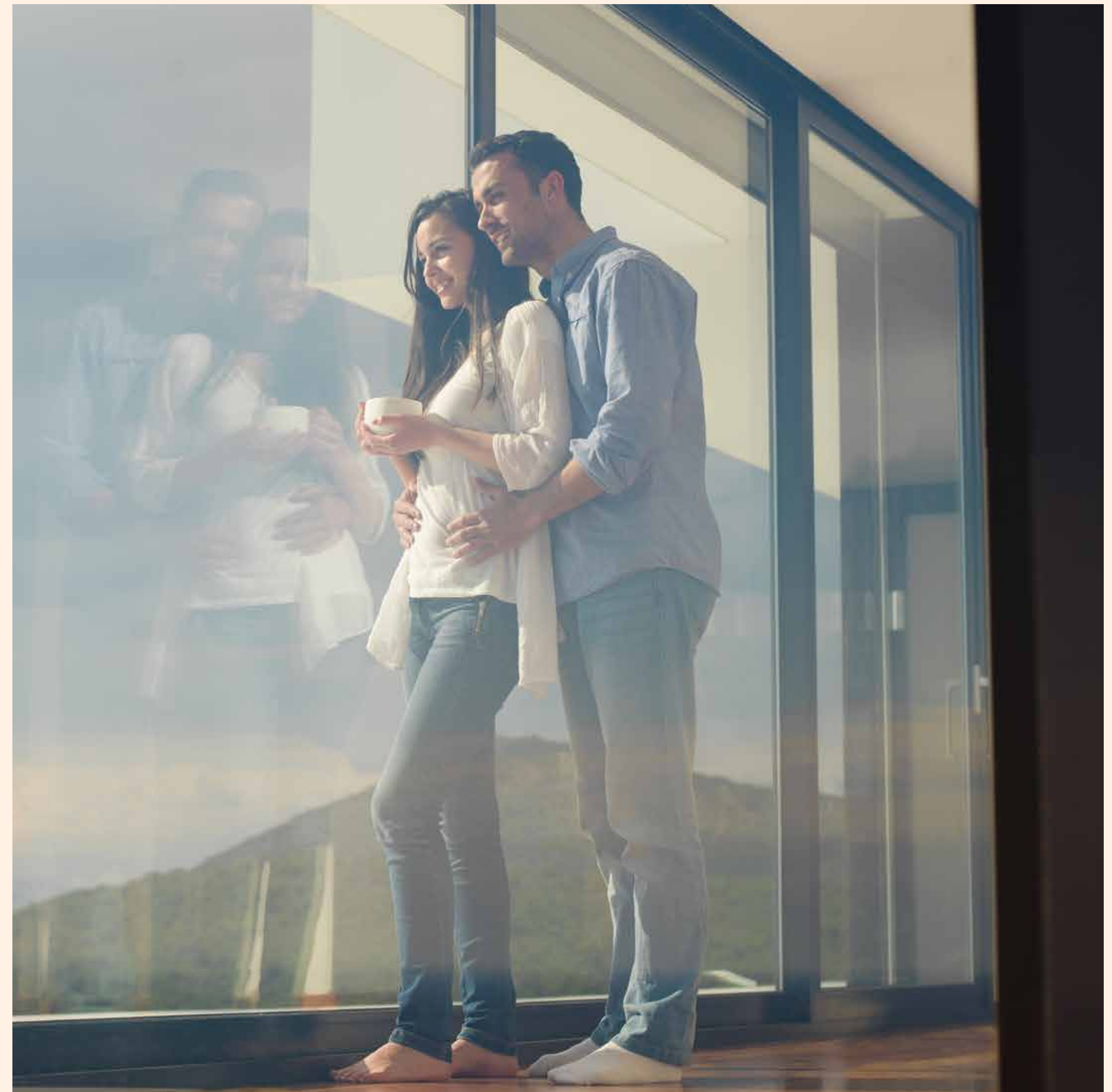
As you wander through the shade of a thousand trees, in the midst of nature, you smile and look back at your life. Every decision you made, through the trials, the tribulations, the promotions, the market-winning propositions, the highlights and the learnings, everything you have worked for is worth it, just for this moment.

Basking in the warmth of a Sunday sun, with your loved ones, you know that every moment is picturesque and every moment, is perfect. Everything you have done until this moment, to come to this height of excellence, is finally worth it.

You will remember that the promises you made to yourself and to your family have been fulfilled when they walk into your home and have a smile that is filled with happiness.

Everything you need, everything you desire, everything you ever wished for, is here.

This is the lifestyle of those who Live Apart.







## *An oasis of calm, at the epicentre of progress*

The location of the epitome of Living Apart is nestled inside a place that you know so well, yet have not imagined to be a haven of solace.

We are talking about Greater Noida, the spotlight of India's burgeoning business enterprise. Developed as one of the largest industrial townships in Asia, Greater Noida is the crown jewel of progress and is envisioned to be India's smartest city in the National Capital Region. Home to the most modern urban development centre, this fast-developing nucleus of enterprise is the result of collaborative, far-sighted planning geared towards catapulting India's progress into the future.

Geared for aggressive entrepreneurial expansion in the near future, Greater Noida also has nature in full bloom.

- The city is already dotted by huge green cover, which is ever expanding.
- The carbon-footprint of industry is offset by an abundance of trees and it keeps the surroundings as a pollution-free area.
- The well-laid road network is already developed as beautiful tree-lined avenues making commuting a pleasure.

Even from the moment you land, get ready to be greeted by elegance. Just a small drive away, will be the Noida International Airport, slated to be India's largest airport, on the lines of the Zurich Airport in Switzerland. And numerous other investments by public and private enterprises have made the region a hotbed of progress.



*Entry point of Greater Noida - Pari Chowk*





*Immerse yourself in Nature's Bounty*



# *Tee-off a future of Living Apart*

There's something about teeing-off, amidst the manicured greens, the warming sun and the calm, unpolluted breeze that seems to run from the horizon to you as a wave of calm. It is a different language, of fine living, sophisticated taste and conversations with people of class. Something as simple as drinking your favourite beverage becomes memorable.

Yes, we are talking about one of the largest integrated delivered townships - Jaypee Greens. It is home to a select few, residing in 452 acres of lush green surroundings. We have envisaged life for you in this picturesque township, as that is the correct meaning of Living Apart.

What's more, member exclusive clubhouses, banquet facilities, tempting eateries, spas & health clubs, a golf academy and a host of recreational options invite you to live life, apart. Live, unwind, rejuvenate in exclusive spa resorts, social clubs, integrated sports complexes and more, and facilities made for the whole family such as recreational parks, schools, gardens, jogging tracks that elevate lifestyle here to a privileged stature and your glorious legacy for generations to come.



*Tee-off at the 18-hole Golf Course*



## *A neighbourhood of exclusivity.*

Jaypee Greens, an expansive 452 acre township open to only an exclusive few, who live life to their fullest. This uber elite location with lush-greenery and luxe-living that stretches out as far as the eye can see.

Amidst this integrated township, you will find one of the world's longest 18 hole golf-course, designed by none other than Greg Norman, the biggest name in the world, for Golf Course Designs. He is the one who has made world-famous golf-courses and has rated this among the Top Ten Golf Courses in the world. This unique course is one of the world's most exclusive in the world.

Playing at the fairway, are the whos-who and stalwarts of business, entertainment and expats, who call this place home.

When you choose this locale, you are choosing to be part of the choicest few, who elevate living into one that is exclusive and luxurious.

*Wake up to this breathtaking view at the golf course everyday*

# Perfect Vibe for Good Times



*Boomerang Club*



*Temple*



*Manicured Gardens*



*Atlantic Sports Complex*

All Actual Images

## Move-in to a Ready-to-move-in Lifestyle

Forget about the long-drawn process of moving into a new house and the headaches associated with it. Here, all you need to do is walk in and start your own lifestyle with your family. It is a place where there is nobody to intrude on you, on your thoughts, your moments and your life.

- One of the lowest per family acre life gives you a feeling of exclusivity and being apart.
- The massive population of different species of trees at the golf course and the numerous parks will give you company at all times.
- Where you share space with families of birds, whose language you will almost start to speak as a universal one.

With this ready-to-move-in lifestyle, you will also embrace a neighborhood that is elite, welcomes you with a smile and an atmosphere of friendliness regardless of age. Where your kids can actually have incredible, memorable childhood with the never-ending spark of life. Imagine a lifestyle where all this is possible and more!

In the vicinity too, you have everything you and your family need, from temples to school & colleges, sports facilities to spa resorts, green cover like you have never seen before and a magnificent golf-course. Come back to nature and transform your 'life', into a lifestyle of peace with luxury. A lifestyle that starts as soon as you decide, "Yes, this is what I want for my family."

*Crafted for fine living at the Township*

18 HOLE GOLF COURSE

TEMPLE

SPORTS COMPLEX - THE ATLANTIC

BOOMERANG CLUB

GOLF PRACTICE RANGE

GATED SECURITY

HELIPAD

SCHOOLS

HOSPITALS

TOWN CENTRE

GOLF & SPA RESORT

FIRE STATION

*The expanse of living apart*

READY TO MOVE-IN LIFESTYLE

COMMUNITY LIVING

UNDISTURBED, VAST OPEN SPACES

AMPLE GREEN SPACE AND WATER BODIES

UNPOLLUTED, PURE AIR

AN ATMOSPHERE OF CALM BUILT AMIDST NATURE



\*Actual Site Photograph of Jaypee Greens Township. The facility is managed and governed by the Rules and Regulations of Jaiprakash Associates Limited (JAL). Same can be utilized as per the prevailing policies of JAL.



EVERYTHING AT THE ISLANDS SETS THE GOLD STANDARD OF HIGH-LIVING THAT TAKES SPECTACULAR NATURAL SETTINGS AND ELEVATES IT WITH LUXURY MADE FOR ONLY THE MOST EXCLUSIVE.

IT IS NAMED THE ISLANDS BECAUSE THERE IS NOTHING IN THE VICINITY THAT COMPARES TO THE INCREDIBLE, CURATED LIFESTYLE OF THOSE WHO LIVE INSIDE. IT IS AN OPTION AVAILABLE ONLY TO A FEW, AND A LIFE THAT EVEN FEWER WILL BE ABLE TO LIVE. THE ISLANDS, IS WHERE YOU LIVE APART IN EVERY FACET OF LIFE.

*Presenting*



THE ISLANDS BY GAURS ARE MADE TO INDULGE YOU IN GRANDEUR AND UNDERSTATED ELEGANCE. EVERY FACET OF THESE BESPOKE RESIDENCES HAVE BEEN DESIGNED WITH TASTE, MADE WITH NATURE, MADE JUST FOR YOU. IT IS A MASTERPIECE OF PLANNING, EXECUTION AND REFINEMENT; AND IS THE RESULT OF ALMOST 3 DECADES OF COMMITTING OURSELVES TO DELIVERING EXCELLENCE.



*An iconic landmark of luxury,  
amid greens made for the exclusive*



Actual Image of Golf course and township, 3D rendered elevation image (Artistic Impression) of the Project

## HIGHLIGHTS OF THIS LANDMARK OF LUXURIOUS LIVING

- Custom-made residences and lifestyle choices, in the midst of the luxurious Integrated Township
- 9 heaven-piercing towers, up to 37 storeys. This boulevard of towers create an unmistakable landmark that can be seen and recognised not only by its enormity, but also its neo-classical Roman & Gothic influence of architecture.
- Each of the 506 condominiums are made up of large, inviting spaces from 4BHK to 6BHK, for you to live up every moment, in luxurious bliss.
- The residences are so exclusive that we have designed only 2 Condominiums on each floor to ensure utmost privacy. And the best part is that all the condominiums face the lush green beautiful golf course on one side and the expansive Pari Chowk on the other side. You will always have an uninterrupted horizon to gaze at.
- We have also curated bespoke large residences especially for the elite few which are exquisite duplexes, penthouse suites and large terrace homes that match your effortless style and excellent taste.



*View from Golf Course*

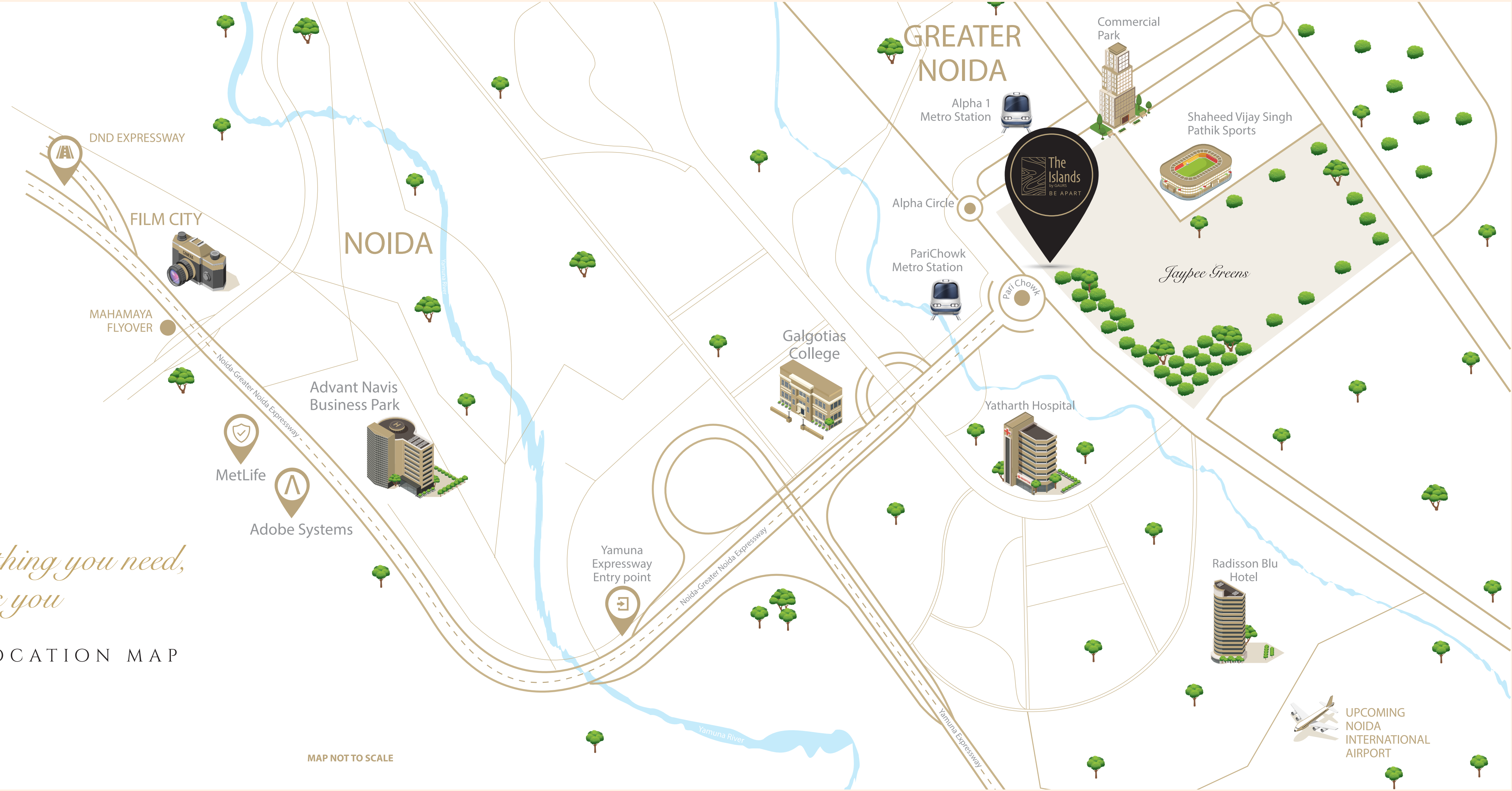
*Trailblazer in architectural design*

The  
Islands  
by GAURS  
BE APART



*Night View from Pari Chowk*

DELHI



*Everything you need,  
reaches you*

THE LOCATION MAP

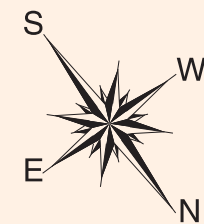
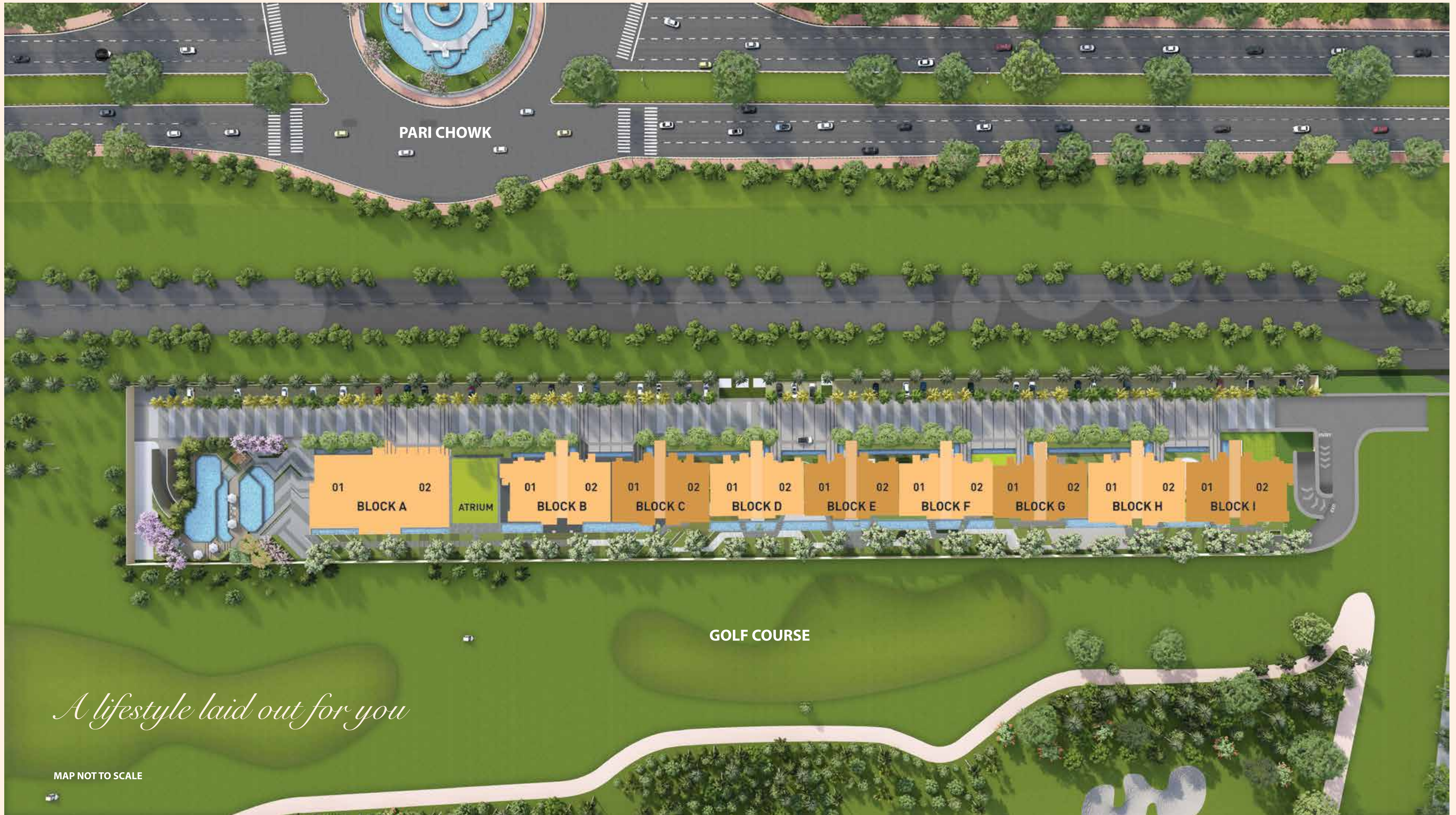
MAP NOT TO SCALE

UPCOMING  
NOIDA  
INTERNATIONAL  
AIRPORT



The  
Islands  
by GAURS  
BE APART

## LAYOUT PLAN



 **The  
Islands**  
by GAURS  
BE APART

*Curated residences amidst nature  
makes every view refreshing*



Artistic Impression



# The Ivory Coast

*Where life turns  
into an active lifestyle.*

The Ivory Coast is the foundation of living apart. Where luxurious amenities and an active lifestyle come together. This is the place, where life at The Islands begins and awaits you at any time of day or night. With activity zones for you and your family, walking track, water bodies, open gym and more, come rejuvenate & connect with friends and family in a way that transcends life into lifestyle.

- OPEN GYM
- PRETEEN PLAY AREA
- MOUNDS
- SIT OUT/CHILLING PAD
- YOGA & MEDITATION AREA
- CLIMBING WALL
- SENIOR CITIZEN ZONE
- WALKING TRACK
- PET PLAY AREA
- KIDS PLAY AREA
- WATER BODIES





# The Ivory Coast

OPEN GYM



SIT OUT/CHILLING PAD



KIDS PLAY AREA



WALKING TRACK



SENIOR CITIZEN ZONE



PET PLAY AREA



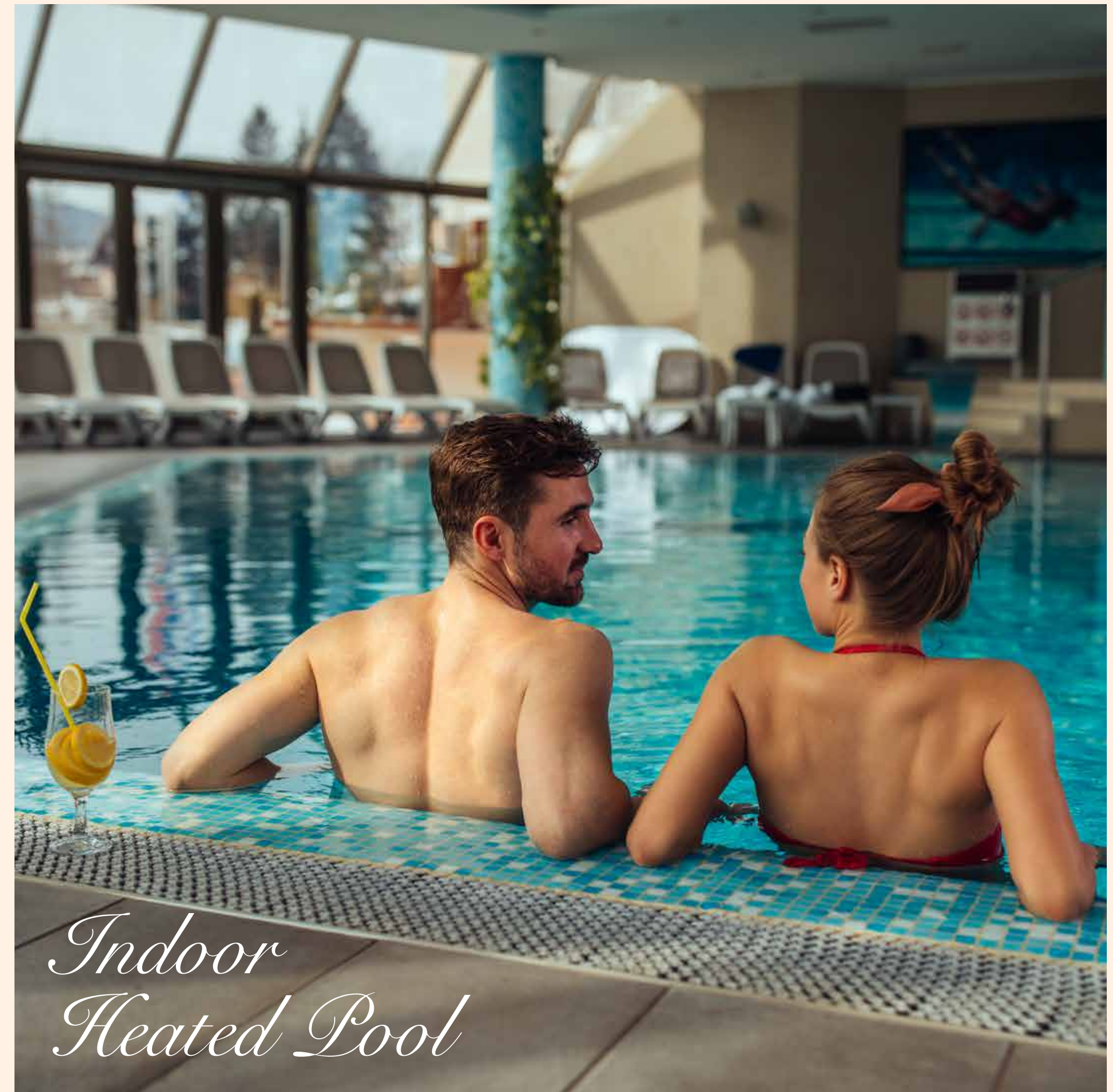
# The Gold Coast

THE CLUBHOUSE

*A connection zone for  
you and your family*

Good times begin at The Gold Coast, your clubhouse at The Islands. A spectacle in itself with an area of about 2787 sq.mt. (30000 sq.ft.), it is home to everything you need for a weekend, full of relaxation and rejuvenation for your whole family. When you are here, there will be no distractions, just the peace of being in the moment. It is a connection zone meant only for you and your family.

- INDOOR HEATED POOL
- KIDS POOL / LAP POOL / FAMILY POOL
- JACUZZI
- CIGAR LOUNGE/ SPORTS BAR/CARD ROOM
- PATISSERIE & COFFEE SHOP
- GUEST ROOMS
- BOWLING ALLEY
- VIRTUAL CLASSROOM
- KIDS PLAY AREA
- GYMNASIUM
- MASSAGE ROOM
- SAUNA & STEAM
- GET-TOGETHER PARTY SPACE
- BUSINESS CENTER
- LIBRARY
- CONFERENCE ROOM
- YOUNGSTER'S ZONE
- MINI HOME THEATRE
- MEDICAL CENTRE / FOOD HALL
- SALON



# The Gold Coast

Patisserie & Coffee Shop



Bowling Alley



Steam & Sauna



Sports Bar



Gymnasium



Library



Youngster's Zone



Indicative Images, All the above images are for reference only.

Indicative Images, All the above images are for reference only.

# The Orbit

THE SKYWALK

*Here, you don't just look up,  
you revel among the clouds*

The Skywalk is a glorious jewel on top of The Islands that connect all buildings and provide a place of recreation & rejuvenation among the clouds. Situated just above the 23rd floor, about 90 meters above the ground level, connecting 8 towers and working as a central nervous system, this inimitable skywalk is replete with luxuries that you just keep coming back to. Everything you need to relax and rejuvenate is available at this island in the sky. From the walking track, to the Celebration Pavillion for an evening of revelry, or even the Library where you can get your daily dose of quiet reading, you will form fond memories that keep you coming back for more.

- PADDLE COURT
- WORKSTATION PODS
- JOGGING / WALKING TRACK
- TOT LOT AREA
- FESTIVAL GARDEN
- CELEBRATION PAVILLION
- LIBRARY & READING ZONE
- OBSERVATORY DECK
- MULTIPURPOSE COURT
- OPEN AIR THEATER
- OPEN WATER BODIES



*View from the Skywalk*

Picture Courtesy - Jaiprakash Associates Ltd

Actual Image

Walking Track



Paddle Court



Observatory Deck



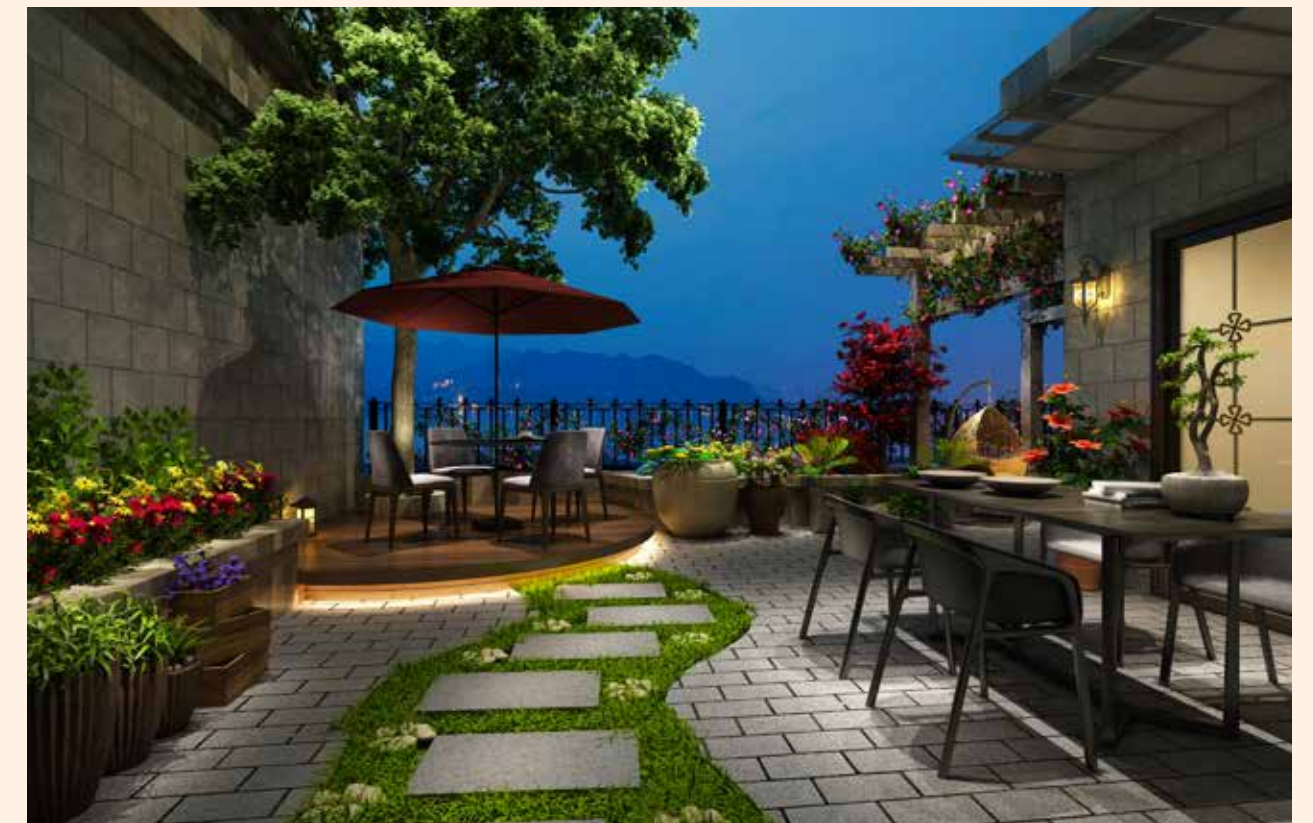
Workstation Pods



Open Air Theater



Celebration Pavillion



# The Orbit

THE SKYWALK

*Towering gloriously above the crowd*

The  
Islands  
by GAURS  
BE APART



*Pari Chowk Side*

Artistic Impression



The  
Islands

by GAURS

BE APART

*Your inner sanctum  
of Living Apart*

THE INTERIORS

*Here, nature is  
the foundation of living.*

The residences at The Islands by Gaur are surrounded by a huge expanse of nature as far as the eye can see. The sights and sounds of nature welcome you, every time you open one of the many balcony doors. Wherever you see, nature looks right back at you. Here, every morning you can open doors to a more beautiful sunrise with a cup of coffee and your loved ones or watch the sunset hand-in-hand with your better half. The views from these residences have been crafted to make just these moments even more special.

To say the apartments of The Islands by Gaur are meant to live larger than life is an understatement. Each floor has just two luxurious residences, each with the breathing space of the entire floor. The living spaces themselves are designed to the exact specifications of your bespoke life. Everything you touch in these residences is an experience. With finely crafted details in every corner, objects transform themselves from the mundane to the eloquent. From expansive dining rooms, to enormous walk-in closets to balconies with huge vistas of the surroundings, a lifestyle of luxury, made just for you, awaits you. Come alive, every day.



*Lobby Area - Enter a world of grandeur with Double Height Tower Lobby*





*Dining Area - Fine Dining Spaces to create Gastronomic Memories*

Artistic Impression, image for reference only

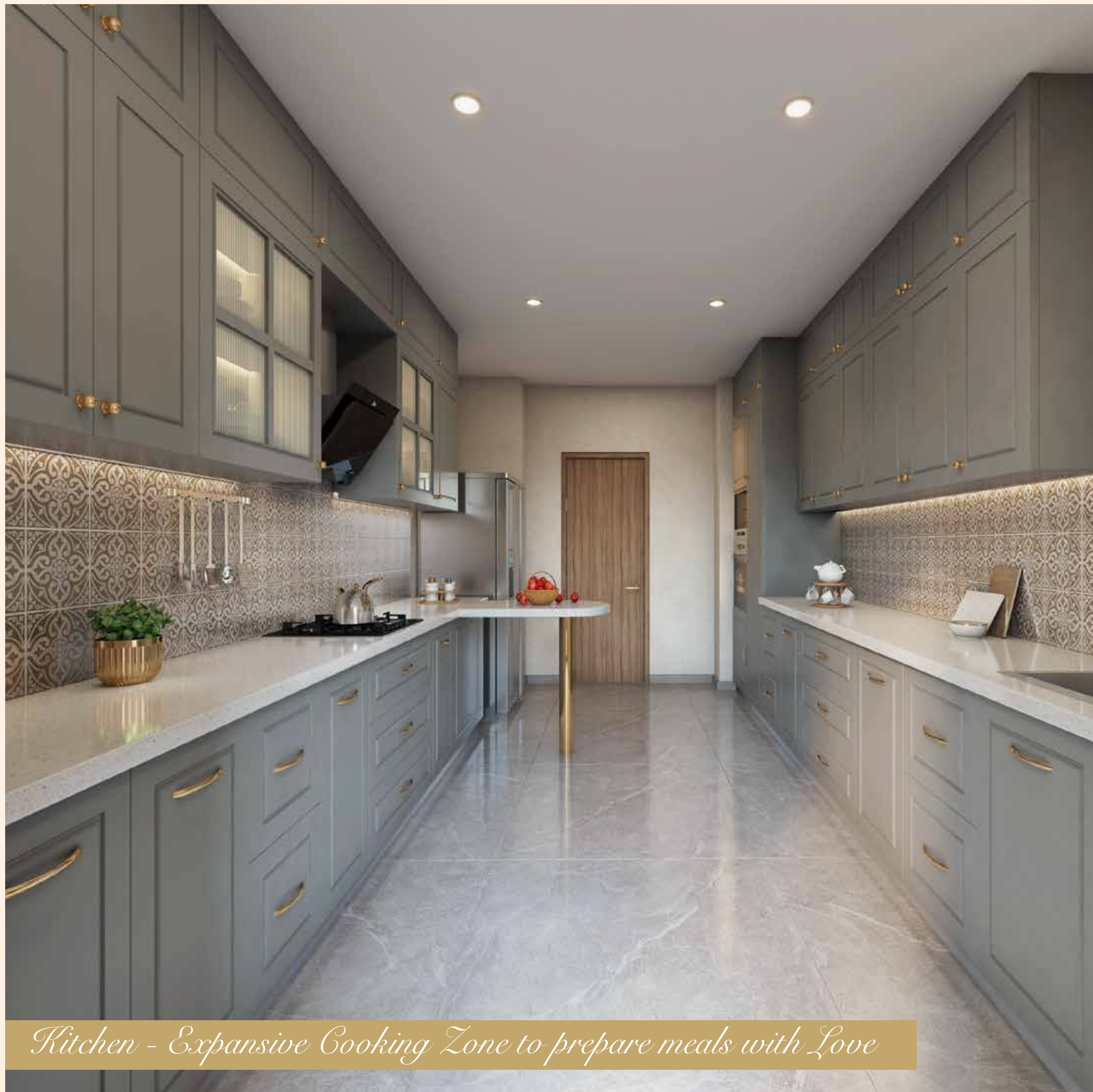


*Living Room - Luxury Space to Chill & Relax*

Artistic Impression, image for reference only

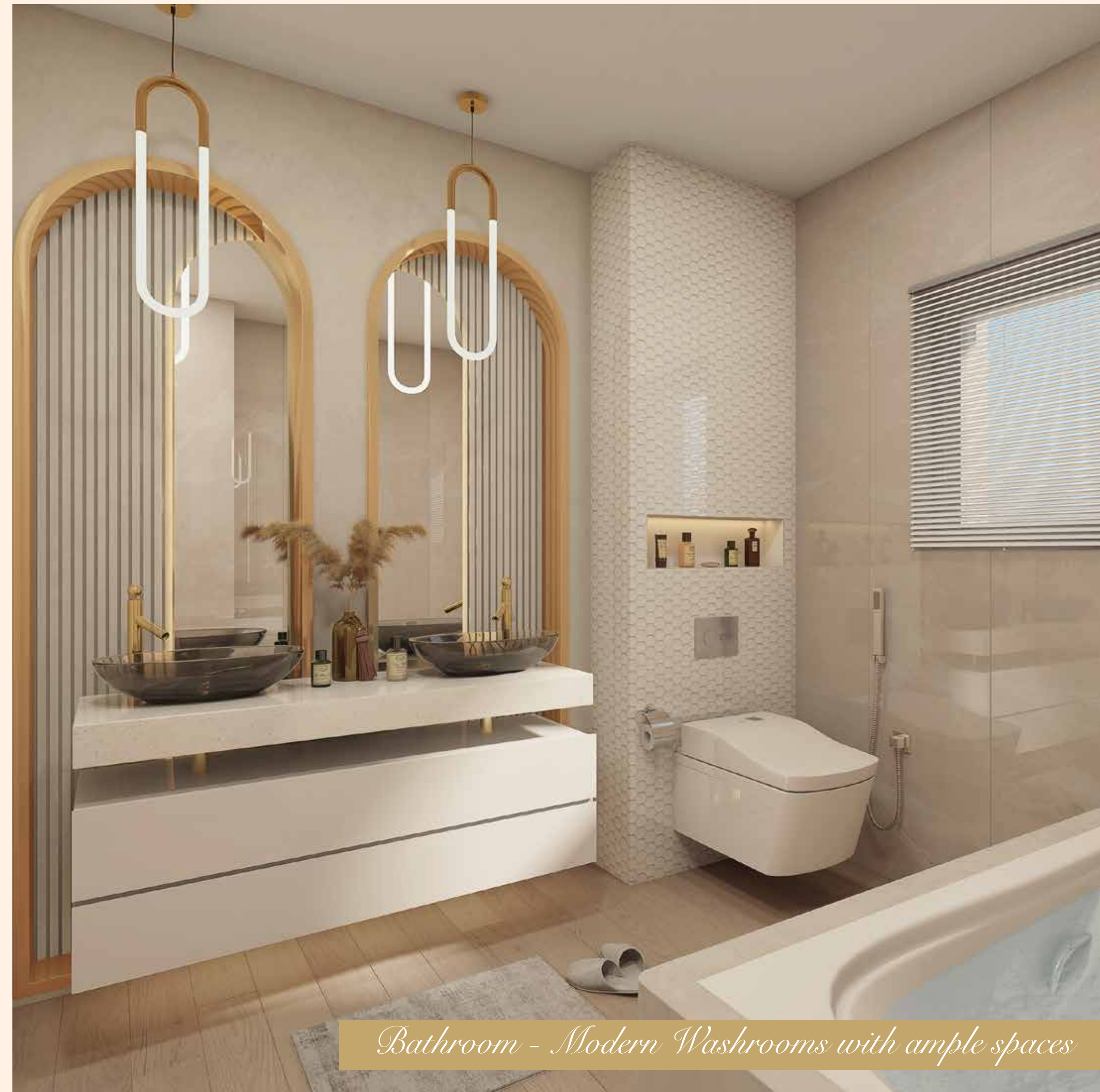


*Master Bedroom - Wake up to A Mesmerizing View everyday*



*Kitchen - Expansive Cooking Zone to prepare meals with Love*

Artistic Impression, image for reference only



*Bathroom - Modern Washrooms with ample spaces*

Artistic Impression, image for reference only



The  
Islands

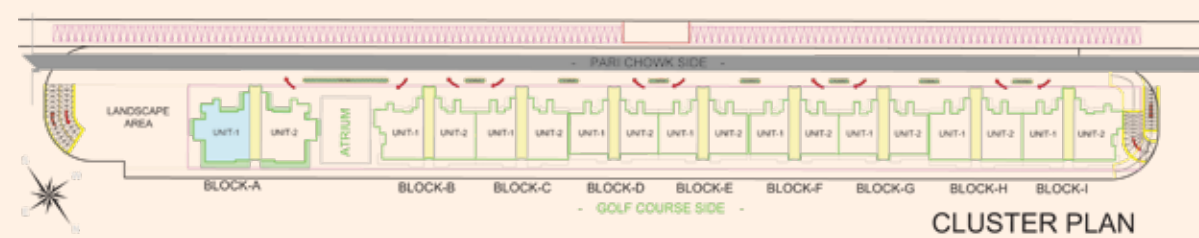
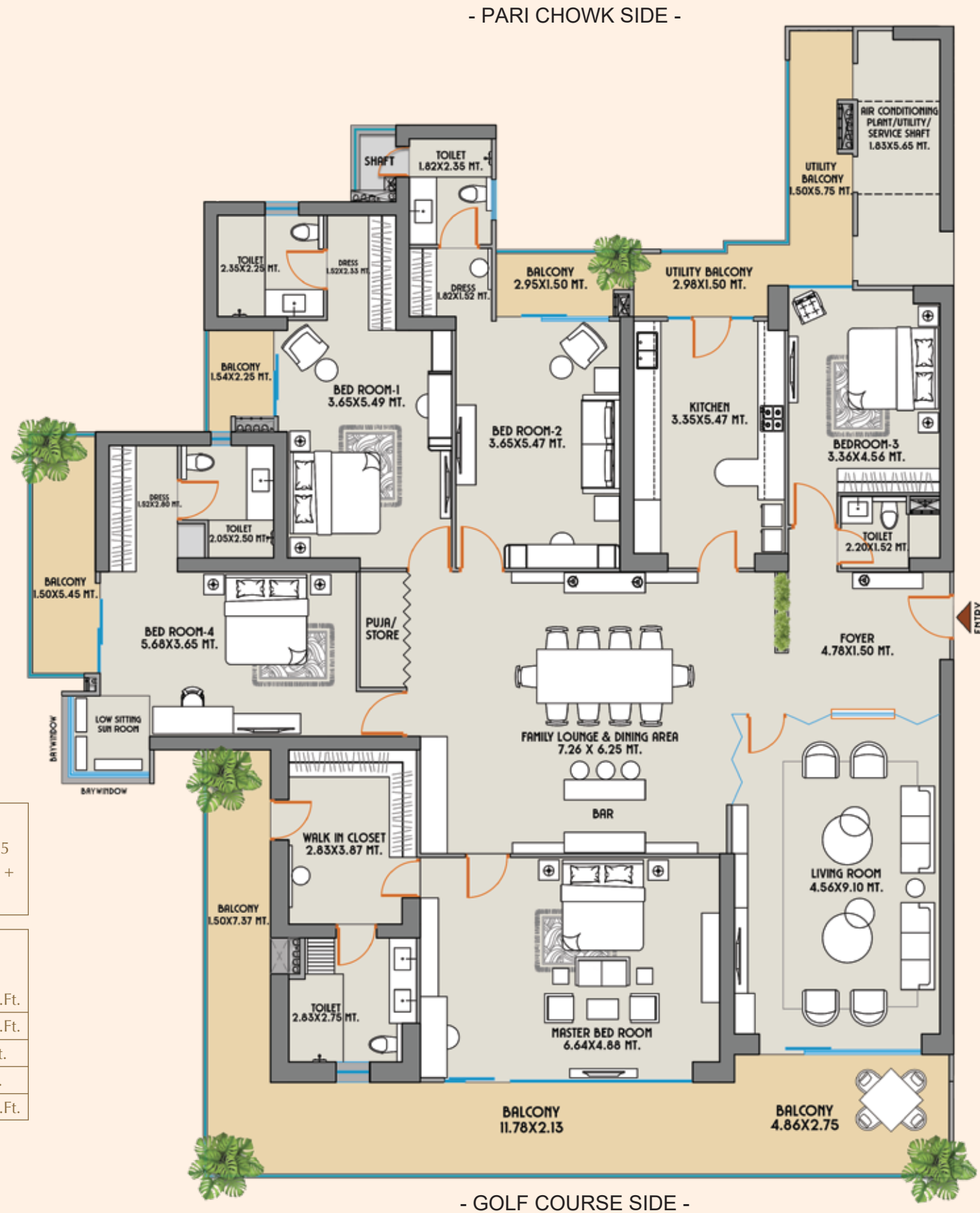
by GAURS

BE APART

*Be floored by exclusivity*

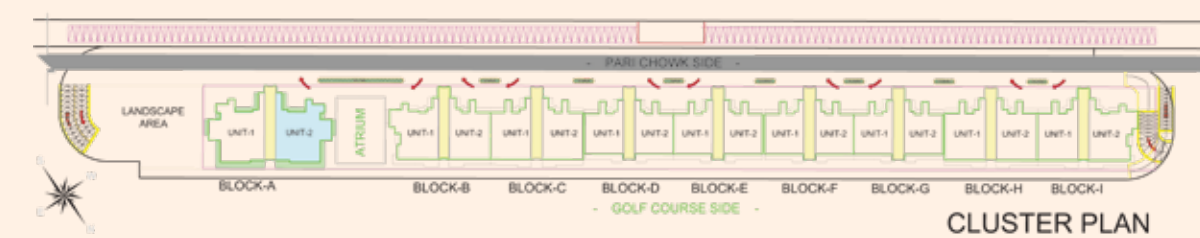
THE FLOOR PLANS

CONDOMINIUM FLOOR PLAN  
**BLOCK A-01**  
2B+GF/STILT+36 Floors



Disclaimer: Total Area: The total area loading of other constructed areas including the constructed common areas over the carpet area which is duly mentioned in the layout plan of the respective condominium. Carpet Area: The carpet area means the net usable floor area of a condominium, excluding the area covered by the external walls, areas under services shafts, exclusive balcony or verandah area and exclusive open terrace area, but includes the area covered by the internal partition walls of the apartment. Scales for conversions, Area 1.000 Sq.mt. = 10.764 Sq.ft., Dimension 304.8 mm=1.0 Foot.

CONDOMINIUM FLOOR PLAN  
**BLOCK A-02**  
2B+GF/STILT+36 Floors



Disclaimer: Total Area: The total area loading of other constructed areas including the constructed common areas over the carpet area which is duly mentioned in the layout plan of the respective condominium. Carpet Area: The carpet area means the net usable floor area of a condominium, excluding the area covered by the external walls, areas under services shafts, exclusive balcony or verandah area and exclusive open terrace area, but includes the area covered by the internal partition walls of the apartment. Scales for conversions, Area 1.000 Sq.mt. = 10.764 Sq.ft., Dimension 304.8 mm=1.0 Foot.

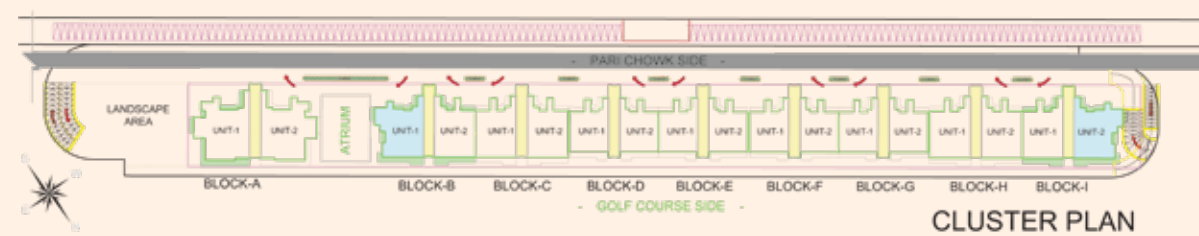
CONDOMINIUM  
FLOOR PLAN  
**BLOCK B-01 & I-02**  
2B+GF/STILT+23 Floors



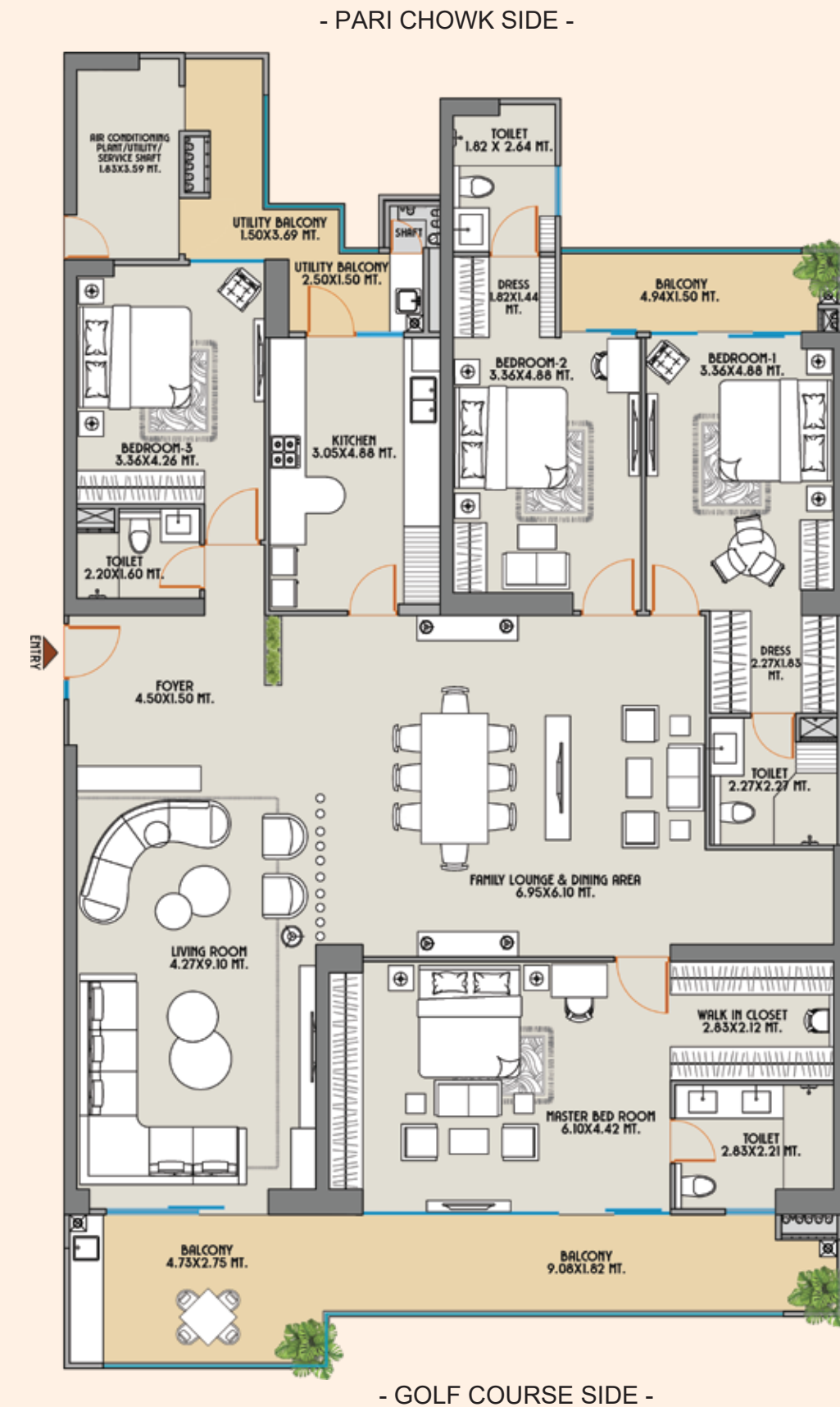
FOYER + 4 BED ROOMS + LIVING ROOM + FAMILY LOUNGE & DINING AREA + PUJA / STORE + KITCHEN + 4 TOILETS + WALK IN CLOSETS + 2 DRESS + 5 BALCONIES + BAY WINDOW + UTILITY AREA

AREA DETAILS :-	
CARPET AREA (As per the RERA act)	= 244.53 Sq.Mt. / 2632.12 Sq.Ft.
COVERED AREA	= 258.38 Sq.Mt. / 2781.20 Sq.Ft.
BALCONY AREA	= 64.68 Sq.Mt. / 696.22 Sq.Ft.
COMMON AREA (FLOOR)	= 44.48 Sq.Mt. / 478.78 Sq.Ft.
SALEABLE AREA	= 452.09 Sq.Mt. / 4866.30 Sq.Ft.

Disclaimer: Total Area: The total area loading of other constructed areas including the constructed common areas over the carpet area which is duly mentioned in the layout plan of the respective condominium. Carpet Area: The carpet area means the net usable floor area of a condominium, excluding the area covered by the external walls, areas under services shafts, exclusive balcony or verandah area and exclusive open terrace area, but includes the area covered by the internal partition walls of the apartment. Scales for conversions, Area 1.000 Sq.mt. = 10.764 Sq.ft., Dimension 304.8 mm=1.0 Foot.



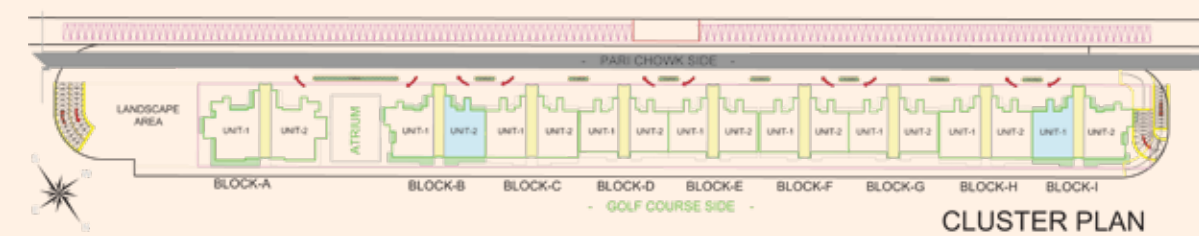
CONDOMINIUM  
FLOOR PLAN  
**BLOCK B-02 & I-01**  
2B+GF/STILT+23 Floors



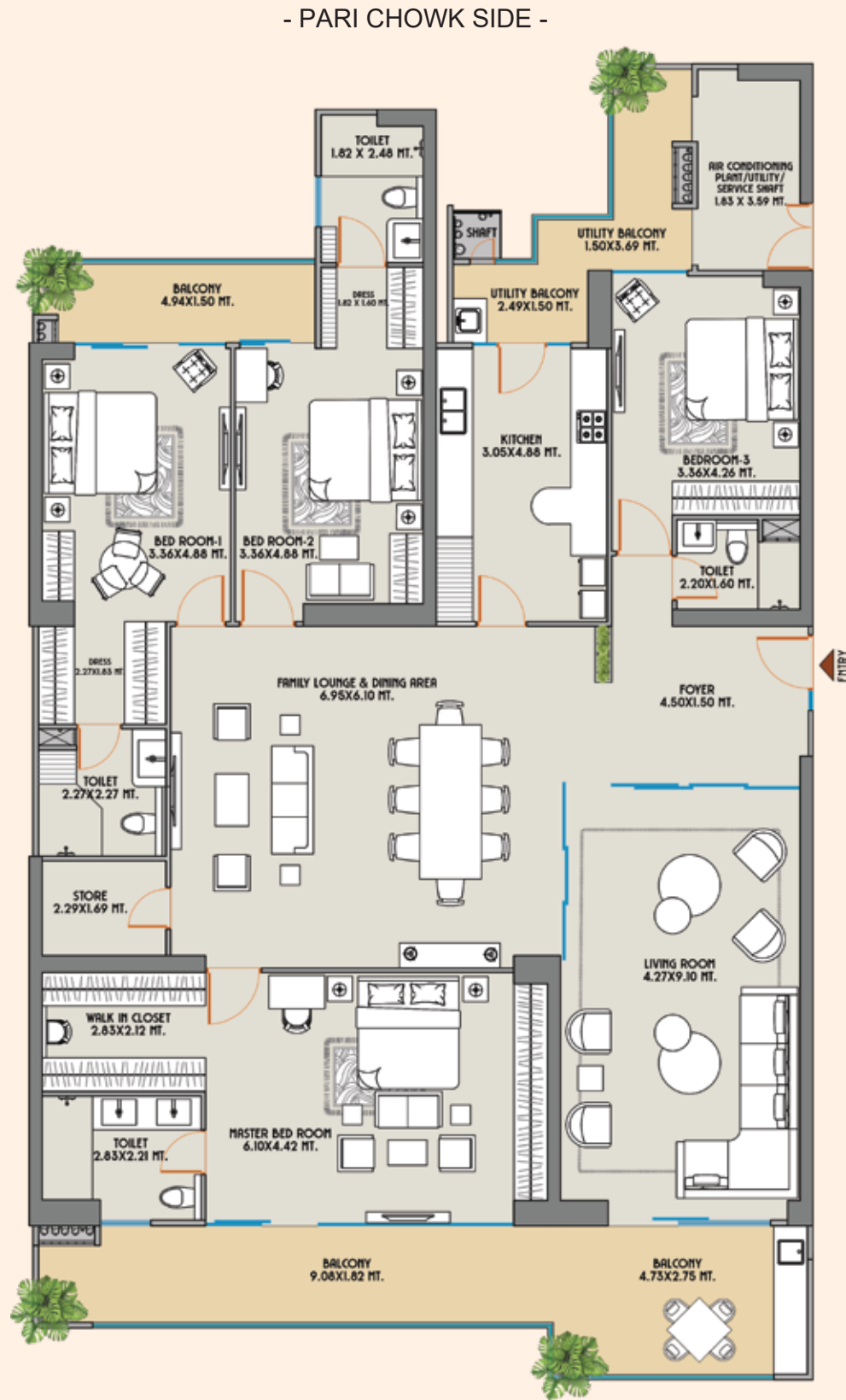
FOYER + 4 BED ROOMS + LIVING ROOM + FAMILY LOUNGE & DINING AREA + STORE + KITCHEN + 4 TOILETS + WALK IN CLOSETS + 2 DRESS + 3 BALCONIES + UTILITY AREAS

AREA DETAILS :-	
CARPET AREA (As per the RERA act)	= 228.26 Sq.Mt. / 2456.99 Sq.Ft.
COVERED AREA	= 242.17 Sq.Mt. / 2606.72 Sq.Ft.
BALCONY AREA	= 48.00 Sq.Mt. / 516.67 Sq.Ft.
COMMON AREA (FLOOR)	= 44.48 Sq.Mt. / 478.78 Sq.Ft.
SALEABLE AREA	= 405.01 Sq.Mt. / 4359.53 Sq.Ft.

Disclaimer: Total Area: The total area loading of other constructed areas including the constructed common areas over the carpet area which is duly mentioned in the layout plan of the respective condominium. Carpet Area: The carpet area means the net usable floor area of a condominium, excluding the area covered by the external walls, areas under services shafts, exclusive balcony or verandah area and exclusive open terrace area, but includes the area covered by the internal partition walls of the apartment. Scales for conversions, Area 1.000 Sq.mt. = 10.764 Sq.ft., Dimension 304.8 mm=1.0 Foot.



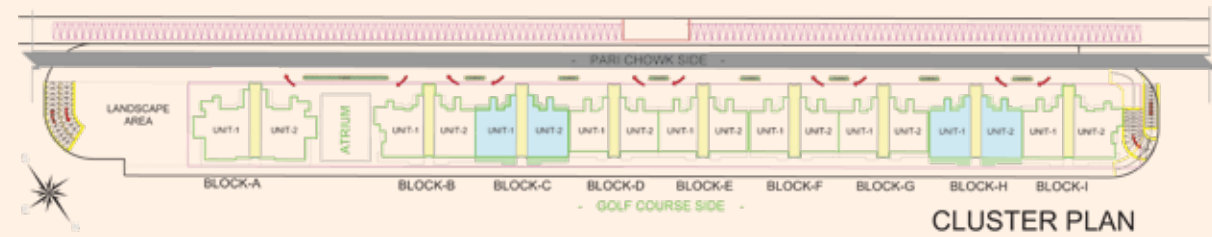
CONDOMINIUM FLOOR PLAN  
**BLOCK C-01 & 02, H-01 & 02**  
Typical Floor Plan  
2B+GF/STILT+23 Floors



FOYER + 4 BED ROOMS + LIVING ROOM + FAMILY LOUNGE & DINING AREA + STORE + KITCHEN + 4 TOILETS + WALK IN CLOSETS + 2 DRESS + 3 BALCONIES + UTILITY AREAS

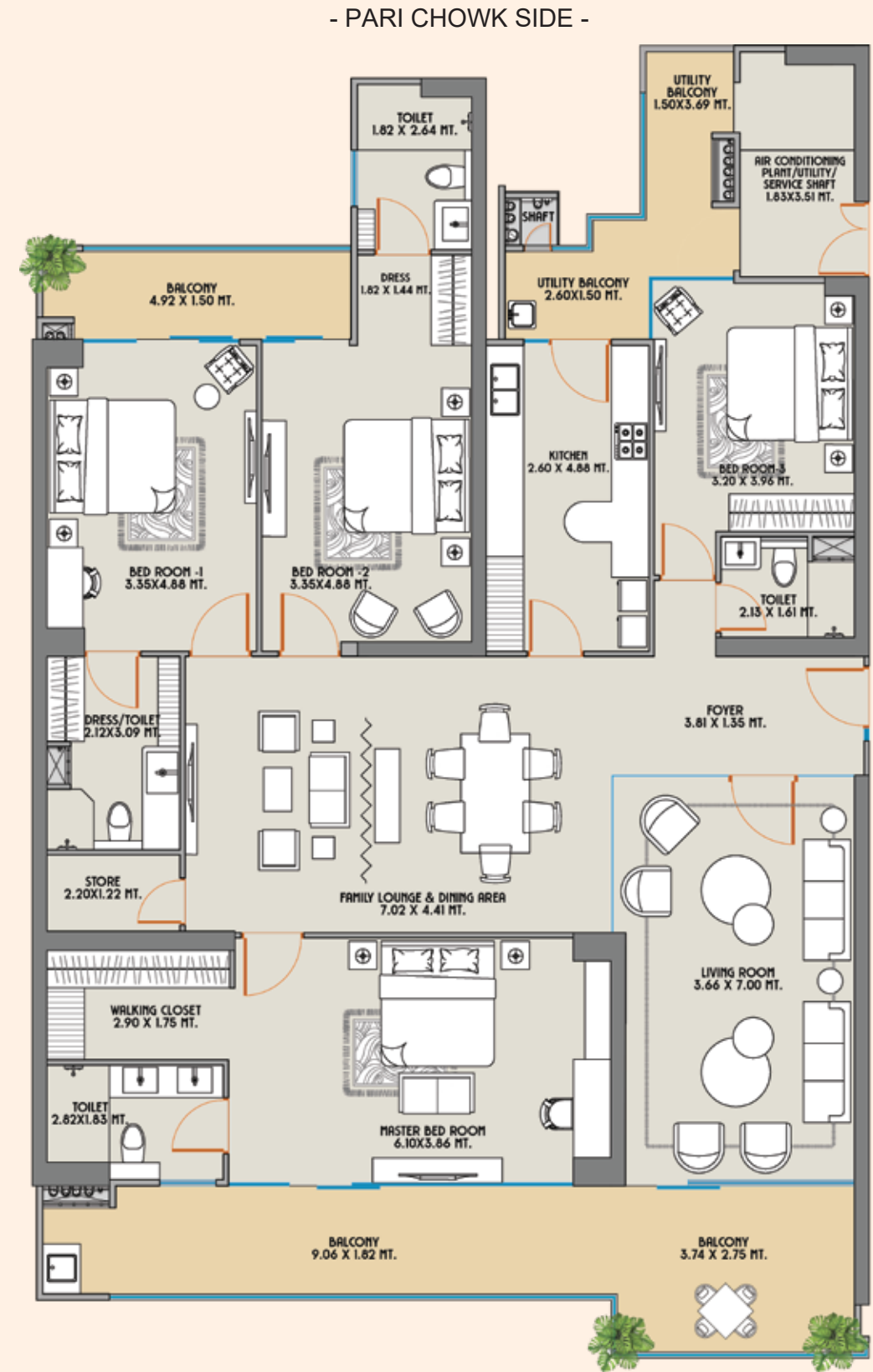
AREA DETAILS :-	
CARPET AREA (As per the RERA act)	= 228.26 Sq.Mt. / 2456.99 Sq.Ft.
COVERED AREA	= 242.17 Sq.Mt. / 2606.72 Sq.Ft.
BALCONY AREA	= 48.00 Sq.Mt. / 516.67 Sq.Ft.
COMMON AREA (FLOOR)	= 44.48 Sq.Mt. / 478.78 Sq.Ft.
SALEABLE AREA	= 405.01 Sq.Mt. / 4359.53 Sq.Ft.

- GOLF COURSE SIDE -



Disclaimer: Total Area: The total area loading of other constructed areas including the constructed common areas over the carpet area which is duly mentioned in the layout plan of the respective condominium. Carpet Area: The carpet area means the net usable floor area of a condominium, excluding the area covered by the external walls, areas under services shafts, exclusive balcony or verandah area and exclusive open terrace area, but includes the area covered by the internal partition walls of the apartment. Scales for conversions, Area 1.000 Sq.mt. = 10.764 Sq.ft., Dimension 304.8 mm=1.0 Foot.

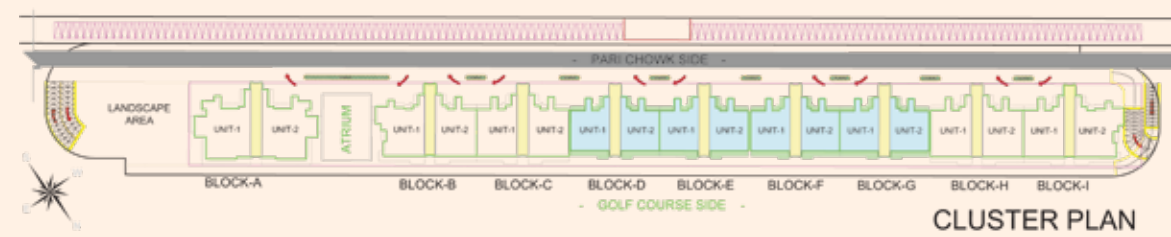
CONDOMINIUM FLOOR PLAN  
**BLOCK D-01, 02 & G-01, 02**  
2B+GF/STILT+30 Floors+1 Service Floor  
**BLOCK E-01, 02 & F-01, 02**  
2B+GF/STILT+35 Floors+1 Service Floor



FOYER + 4 BED ROOMS + LIVING ROOM + FAMILY LOUNGE & DINING AREA + STORE + KITCHEN + 4 TOILETS + WALK IN CLOSETS + 2 DRESS + 3 BALCONIES + UTILITY AREAS

AREA DETAILS :-	
CARPET AREA (As per the RERA act)	= 188.65 Sq.Mt. / 2030.63 Sq.Ft.
COVERED AREA	= 200.81 Sq.Mt. / 2161.52 Sq.Ft.
BALCONY AREA	= 44.52 Sq.Mt. / 479.21 Sq.Ft.
COMMON AREA (FLOOR)	= 44.62 Sq.Mt. / 480.29 Sq.Ft.
SALEABLE AREA	= 342.17 Sq.Mt. / 3683.12 Sq.Ft.

- GOLF COURSE SIDE -



Disclaimer: Total Area: The total area loading of other constructed areas including the constructed common areas over the carpet area which is duly mentioned in the layout plan of the respective condominium. Carpet Area: The carpet area means the net usable floor area of a condominium, excluding the area covered by the external walls, areas under services shafts, exclusive balcony or verandah area and exclusive open terrace area, but includes the area covered by the internal partition walls of the apartment. Scales for conversions, Area 1.000 Sq.mt. = 10.764 Sq.ft., Dimension 304.8 mm=1.0 Foot.

## DETAILS OF CONDOMINIUM APARTMENTS

Total No. of Units	- 506
Total No. of Blocks	- 9
<b>HEIGHT</b>	
Block A	- 3.9 mt Floor to Floor
Block B to I	- 3.6 mt Floor to Floor

# Specifications

### DOORS AND WINDOWS

External	- Aluminium/uPVC Sliding/Openable doors & windows
Internal	- Elegant doors in polish / deco paint fixed in hardwood

### RAILING

Balcony	- Glass railing
Staircase	- Mild steel railing

### POP WORK

Internal	- Good quality POP, False ceiling in all rooms and drawing, dining
----------	--

### SECURITY

Internal	- Video Intercom Phone
----------	------------------------

### WALL FINISH

External	- Elegant finish with high quality texture paint
Internal	- All internal walls of rooms, drawing, dining will be painted using OBD

### WOODWORK

Wardrobe	- In all dressing rooms
----------	-------------------------

### SANITARY WORK

Internal	- Piping Corrosion free CPVC pipes and fittings
Fittings	- All taps and fittings of reputed brands in C.P., Wash Basins, Wall mounted W/C of reputed brands

### FLOORING

Drawing	- Imported marble
Dining	- Imported marble
Kitchen	- Vitrified tiles
All Bedrooms	- Laminated Wooden Flooring
Balcony	- Anti-skid tiles
Toilets	- Vitrified tiles

### WIRING & SWITCHES

Wiring	- Fire resistant copper wiring in concealed PVC conduits
Switches	- Modular switches and sockets in adequate numbers
TV Points	- In all rooms
Tel. Points	- In all rooms

### AC & GEYSERS

VRV / Split ACs	- In bedrooms, D/D, Kitchen
Geysers	- In Toilets & Kitchen

### ELECTRICAL FITTINGS

Exhaust Fan Light	- In Kitchen & Toilets
	- Fixtures Ceiling lights in drawing room & master bedroom
Fans	- In bedrooms, D/D and utility
External	- Adequate lighting in common areas

### KITCHEN

Counter	- Kitchen counter with stainless steel sink fitted with R.O. Hob, Chimney with exhaust pipe
Wood Work	- Modular Cabinet
Wall Tile	- Designer ceramic tiles upto 2ft. above working counter





Ever since its inception in the year 1995, Gaur's has been revered as an icon of excellence in the world of real estate. With a burgeoning list of residential projects that encompass high end apartments to highly affordable accommodations occupied by thousands of happy families, Gaur's stress on customer's trust has become the winning mantra. The pointed, unerring focus on creating a better tomorrow has been the driving force at Gaur's. It is our foresight, eye for perfect locations and excellence in execution that has earned us a much-deserved success throughout our long journey. And armed with the confidence and verve to enrich lives, one can safely say that the future belongs to Gaur's.



**REALTY+ EXCELLENCE AWARDS 2022**  
LUXURY PROJECT OF THE YEAR  
- THE ISLANDS BY GAURS



**MAPIC INDIA SHOPPING CENTER AWARDS 2022**  
BEST MALL FOR LEISURE AND ENTERTAINMENT - DELHI NCR  
- GAUR CITY MALL



**SMART CITY EMPOWERING INDIA AWARDS 2020**  
BEST SMART CITY DEVELOPER OF THE YEAR  
- GAURSONS INDIA



**CNBC AWAAZ REAL ESTATE AWARDS 2018-19**  
BEST RESIDENTIAL PROJECT AFFORDABLE SEGMENT - NORTH ZONE  
- GAUR CITY-2



**PMAY EMPOWERING INDIA AWARDS 2019**  
THE MOST WELL PLANNED UPCOMING PROJECT IN EWS CATEGORY  
- GAURS SIDDHARTHAM



**TIMES BUSINESS AWARDS 2019**  
BEST REAL ESTATE DEVELOPER OF THE YEAR  
- GAURSONS INDIA



**CNBC AWAAZ REAL ESTATE AWARDS 2017-18**  
BEST RESIDENTIAL PROJECT AFFORDABLE SEGMENT - NATIONAL  
- GAUR CASCADES



**CNBC AWAAZ REAL ESTATE AWARDS 2017-18**  
BEST RESIDENTIAL PROJECT AFFORDABLE SEGMENT - NORTH INDIA  
- GAUR CASCADES



**NDTV PROPERTY AWARDS 2016-17**  
BUDGET APARTMENT PROJECT OF THE YEAR (2017) TIER 1 CITIES  
- GAUR CASCADES



**NDTV PROPERTY AWARDS 2016-17**  
BEST TOWNSHIP PROJECT  
- GAUR CITY



**CNBC AWAAZ REAL ESTATE AWARDS 2016-17**  
BEST TOWNSHIP PROJECT  
- GAUR CITY

**28+**  
YEARS OF UNFALTERING  
COMMITMENT

**65+**  
SUCCESSFULLY  
DELIVERED PROJECTS

**40000+**  
POSSESSIONS  
GIVEN (2014-2022)

**65000+**  
DELIVERED  
UNITS

**1 LAKH+**  
HAPPY  
CUSTOMERS

**6 MILLION+**  
SQUARE METER  
(60 MILLION+ SQUARE FEET)  
AREA DEVELOPED

*Every brick a stepping stone to crafting more luxurious lives.*

At Gaur Group, the pinnacle of luxury is not just a construction but a quest for ever-better life experiences transformed into memories. With every property, our craft of luxury gets better refined so that those who live in our properties live exceptional lives, that is priceless, both in terms of life and lifestyle. Each of our 'life-craftsmen' are chosen for their exclusive capability of creating spaces that exceed expectations for a luxurious life.

**Welcome to a world of luxury, welcome to the legacy of Gaur.**



*Milestones we are proud of*

**35** DELIVERED  
RESIDENTIAL  
PROJECTS

**30** DELIVERED  
COMMERCIAL  
PROJECTS

**3** DELIVERED  
TOWNSHIP  
PROJECTS

**2** DELIVERED  
RETAIL  
PROJECTS (MALLS)

**4** GAURS  
INTERNATIONAL  
SCHOOL

**24** ONGOING  
RERA REGISTERED  
PROJECTS



 RERA REGISTRATION NO.: UPRERAPRJ734569 | [WWW.UP-RERA.IN](http://WWW.UP-RERA.IN)

SCAN FOR



Location



Walkthrough



Website

SCAN TO FOLLOW US ON



Instagram




Facebook




GAURSONS INDIA PRIVATE LIMITED

Project Location: The Islands by Gaur, Plot No. B-11, Jaypee Greens, Pari Chowk, Greater Noida - 201306 (U.P) India.

 [theislandsbygaur.com](http://theislandsbygaur.com) | [care@theislandsbygaur.com](mailto:care@theislandsbygaur.com)

Corporate Address: Gaur Biz Park, Plot No-1, Abhay Khand II, Indirapuram, Ghaziabad - 201014.

 [gaursonsindia.com](http://gaursonsindia.com)