

Assetz



**canvas
& COVE**

ECO-LUXURY LIVING



CGI Artist's Impression



THESE LUXURY HOMES BY THE
LAKE ARE DESIGNED TO
REDESIGN THE FUTURE.

STUDIO, 2 & 3 BHK
OFF HOSUR MAIN ROAD (BEGUR LAKEFRONT)

CARBON HEALING HOMES

5 ACRES OF PARK

SMART HOMES

AVG. 70% CARPET AREA EFFICIENCY

URBAN AMENITIES



**TOTAL GREEN SPACE (8.5 ACRES)
WATERFRONT PARK (5 ACRES)**

CGI Artist's Impression

THERE'S A WHOLE LOT OF BEAUTIFUL IN THE BLUEPRINT.

Masterplan

- | | | |
|-------------------------|------------------------------------|---------------------------|
| 1. Main entry/ exit | 8. Indoor badminton | 15. Tennis court |
| 2. Visitors car parking | 9. Swimming pool | 16. Basketball court |
| 3. Security check point | 10. Organic garden/ orchard | 17. Beachfront volleyball |
| 4. Basement entry | 11. Wooded area (camping/ bonfire) | |
| 5. Basement exit | 12. Children's play area | |
| 6. Clubhouse - 1 | 13. Skating rink | |
| 7. Clubhouse - 2 | 14. Futsal court | |



Note: The render is conceptual and is proposed for illustrative purposes only. The orientation, size, and design of the amenities will be subject to change as per construction requirements.



CGI Artist's Impression

THERE'S ROOM FOR BOTH QUIET MINDS AND WILD HEARTS.

From leisurely strolls under leafy trees to impromptu skits at the outdoor amphitheatre, your new home has something for everyone.

Common Amenities

- Swimming pools
- Skating rink*
- Futsal court*
- Tennis court*
- Basketball court*
- Beach volleyball*
- Provision for organic garden/ orchard*
- Wooded area with provision for camping/ bonfire pits*
- Children's play area*
- Pet corner**

Clubhouse Amenities

- Gymnasium
- Fitness studio
- Indoor badminton
- Provision for creche
- Indoor games
- Multipurpose hall

*Amenities will be shared between Phase - 1 & 2.

**Amenity will be shared between Phase - 1 & 2 and will be handed over with Phase 2.



CGI Artists Impression

WE REMEMBERED ALL THE FORGETTABLE DETAILS THAT MAKE A HOME UNFORGETTABLE.

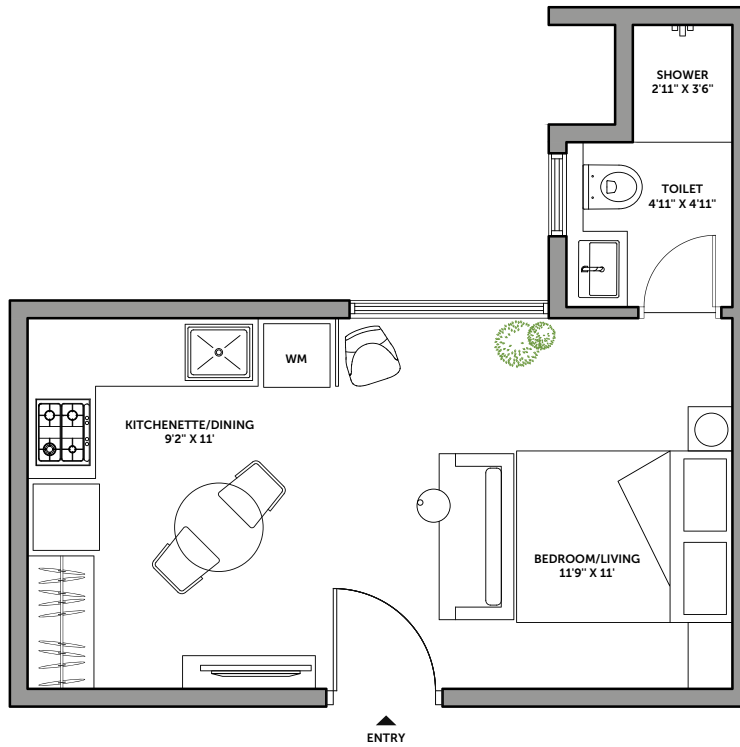
There are 1354* apartments.
You can choose from studios, 2 BHKs and 3 BHKs.
Each is designed for pleasure and serenity,
as well as efficiency.

Studio

Carpet Area as per RERA 265.66 SQ FT

CREDAI Carpet Area 266.62 SQ FT

SBUA 376 SQ FT



2 BHK

Carpet Area as per RERA 669.09 SQ FT

CREDAI Carpet Area 688.14 SQ FT

SBUA 983 SQ FT



3 BHK

Carpet Area as per RERA 807.84 SQ FT

CREDAI Carpet Area 815.27 SQ FT

SBUA 1165 SQ FT



CARBON HEALING HOMES

~79% water savings | Zero waste to landfill | Renewable energy | Ample green spaces

LUXURY specced HOMES

Best in class fittings and fixtures

smart HOMES

Automated lighting and geysers | Motion sensor lighting | Gas leak detection

CARPENTRY FREE HOMES

Pre-fitted wardrobes, vanity and kitchen (Optional)

&HOMES

Homes that eliminate 'or' from your vocabulary and replace it with '&'. Homes that give you everything you dreamed of and more.

SPACE EFFICIENT HOMES

Avg. 70% floor plan efficiency | Minimal redundant spaces

OUTDOOR connected HOMES

~85% open spaces | Urban amenities

Quality BUILT homes

Stringent construction practices | Partnered with the best in the industry

.vaastu. COMPLIANT HOMES

Designed according to scientific principles to maintain harmony and balance



CGI Artist's Impression

This is a

CARBON HEALING HOME

Every carbon healing home is designed to give back to the earth through four very special features.

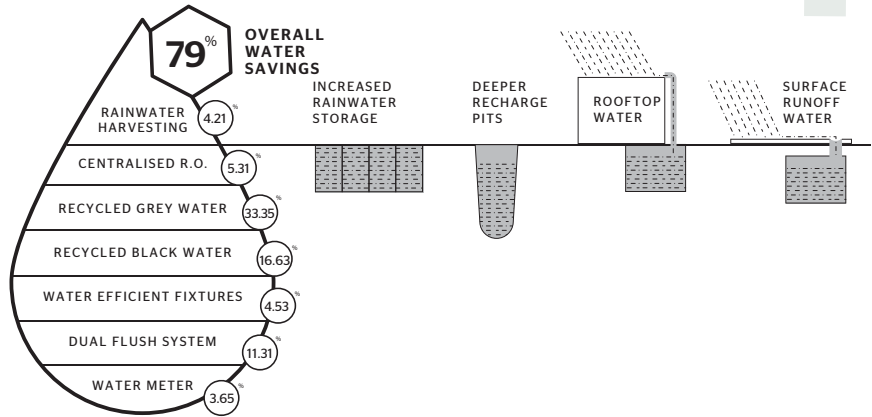
Disclaimer: The information contained in this section is for general information only. The information is provided by our 'Sustainability Services Consultants' and while we endeavor to keep the information up to date and correct, we make no representations or warranties of any kind, express or implied, about the completeness, accuracy, reliability, suitability or availability with respect to the information or related graphics. Any reliance you place on such information is therefore strictly at your own risk.



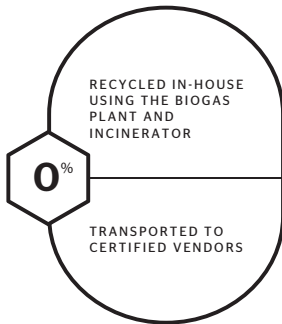
SPONGE EFFECT

Designed to utilize every drop of water

These homes save 150 KL of water every single day - which is equal to the daily demand of 1400 people. In a year, they save 55 million litres.



1



ZERO OUT

Zero waste to landfill

Responsible waste management ensures that 1.34 tonnes of waste is diverted from the landfill every day. The biogas digester uses 615 kg of waste to generate 100 kWh units of electricity.

2

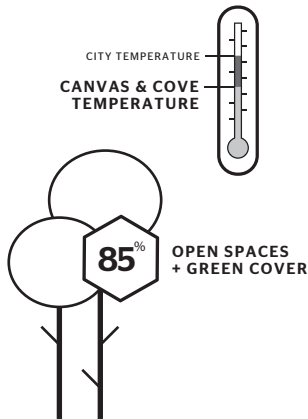
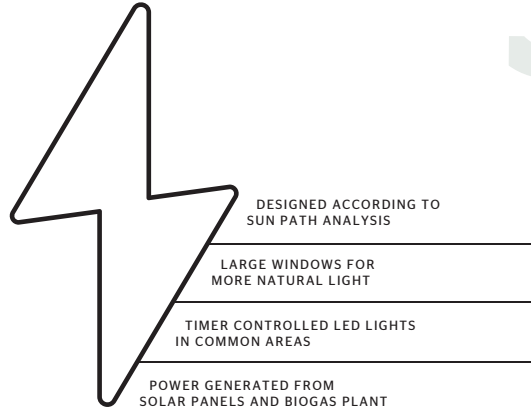
3



SMART POWER

Total utilisation of renewable energy sources

Here, power is generated from both solar panels and a biogas plant. In addition, the project is designed according to sun path analysis and to maximise natural light for less dependency on the artificial.

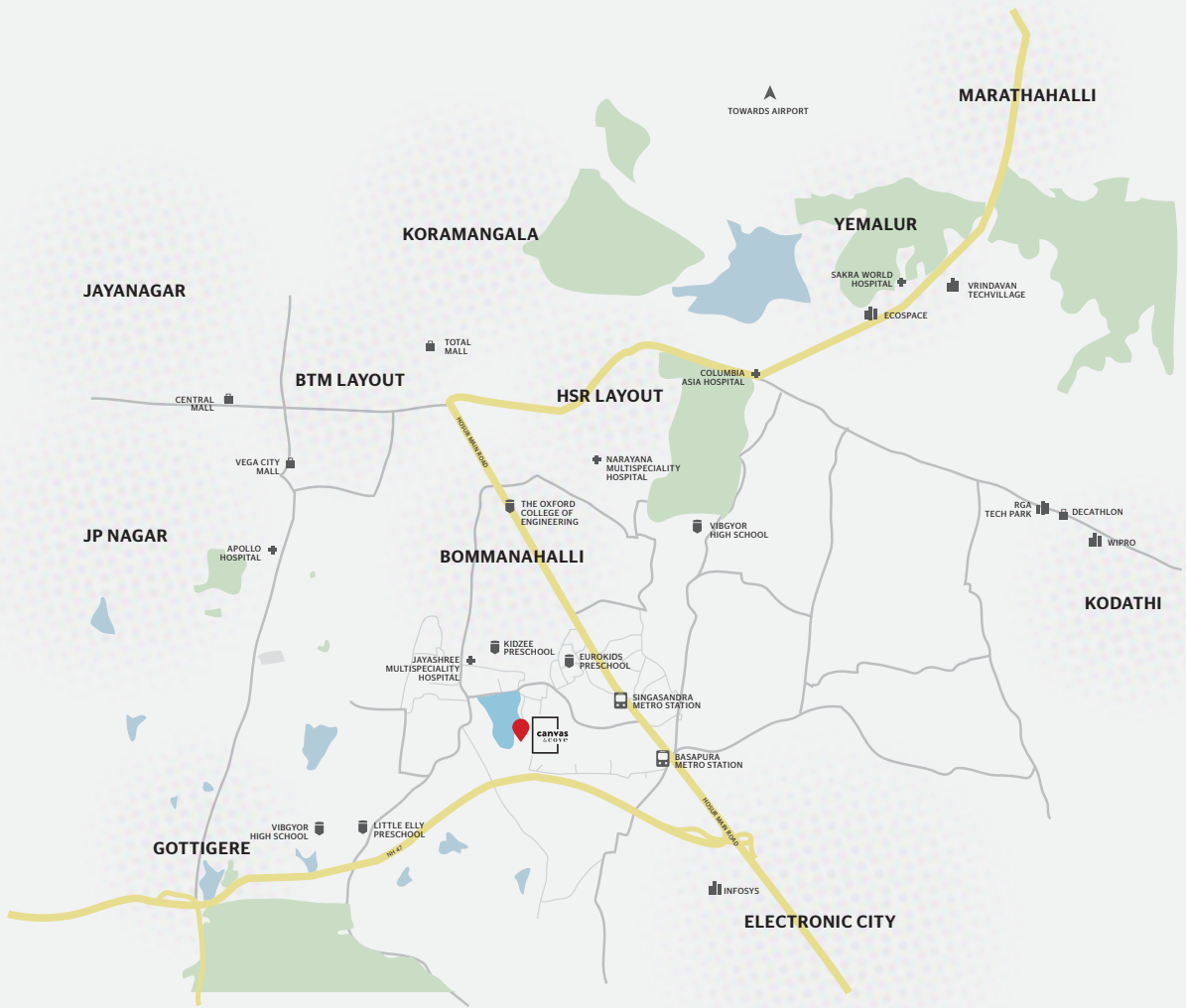


CLIMATE CAPSULE

Higher green cover for lower temperatures

With acres of greenery, Canvas & Cove also has a considerably lower temperature than the city beyond its walls.

4



Map not to scale

THE ROAD HOME IS TOO SHORT FOR LONG DRIVES.

Canvas & Cove is strategically located to be close to well, everything. Just 2.5 km from Hosur Main Road, near the city's best schools, hospitals, malls, and IT parks.

Important distances

- 03 km from Basapura Road Metro Station
- 04 km from Singasandra Metro Station
- 06 km from Electronic City
- 07 km from Koramangala
- 08 km from JP Nagar
- 09 km from Jayanagar
- 10 km from Sarjapur
- 15 km from MG Road
- 15 km from Indiranagar
- 48 km from the Airport



Retail

- 07 km - Total Mall
- 09 km - Vega City Mall
- 10 km - Central Mall
- 11 km - Decathlon



Schools & Colleges

- 01 km - Eurokids Preschool
- 02 km - Little Elly Preschool
- 03 km - Kidzee Preschool
- 04 km - Bangalore Culinary Institute
- 04 km - Oxford College
- 06 km - Vibgyor High School



Hospitals

- 03 km - Jayashree Multispeciality Hospital
- 06 km - Narayana Multispeciality Hospital
- 07 km - Apollo Hospital
- 09 km - Columbia Asia Hospital



IT Parks

- 07 km - Infosys
- 12 km - Wipro
- 13 km - RMZ Ecospace
- 14 km - RGA Tech Park
- 14 km - Vrindavan TechVillage



Assetz Property Group

No. 30, Crescent Road,
Bengaluru, Karnataka - 560001

T: 7829554411

Assetz Canvas & Cove

Survey No. - 149/1/3/4/5/6/7 (P) & 150
Begur Village, Begur Hobli, Bengaluru South
Taluk, Bengaluru - 560068

www.assetzproperty.com/canvasandcove

RERA NO. PRM/KA/RERA/1251/310/PR/200702/003480

Disclaimer: The Company does not guarantee or represent the information contained in this document, which is to be used for general information only. The Company does not guarantee or represent that the information contained within this document is correct. Any interested party should verify all the information including designs, plans, specifications, facilities, features, payment schedules, terms of sales, etc. independently with the Company prior to concluding any decision for buying in any of the projects. The user of the brochure confirms that he/ she has not relied on this information alone when making any booking/ purchase in any project of the Company. The information, visuals, renders and creative depictions contained herein are artistic impressions, indicative in nature and are for general information purposes only. The actual design/ colour/ finish/ construction/ landscape could undergo changes based on changes in design, layouts, materials, site conditions, etc. Any furniture, paintings, or any items of personalised nature not specifically mentioned in the contract and shown in the images are only for the purpose of illustration and does not form part of the offering. Further, the renders/ visuals of the area beyond the project site are artistic in nature and may not depict the actual visuals. While every reasonable care has been taken in providing the information, under no circumstances the Company or its employees, managers or representatives shall be held liable for any loss or damage, special or consequential or otherwise, arising from the use of or reliance on information provided in the brochure without verifying the same independently with the Company. The contents provided herein are with all faults and on an "as is" and "as available" basis. No information given in this brochure creates a warranty or expands the scope of any warranty that cannot be disclaimed under the applicable laws.