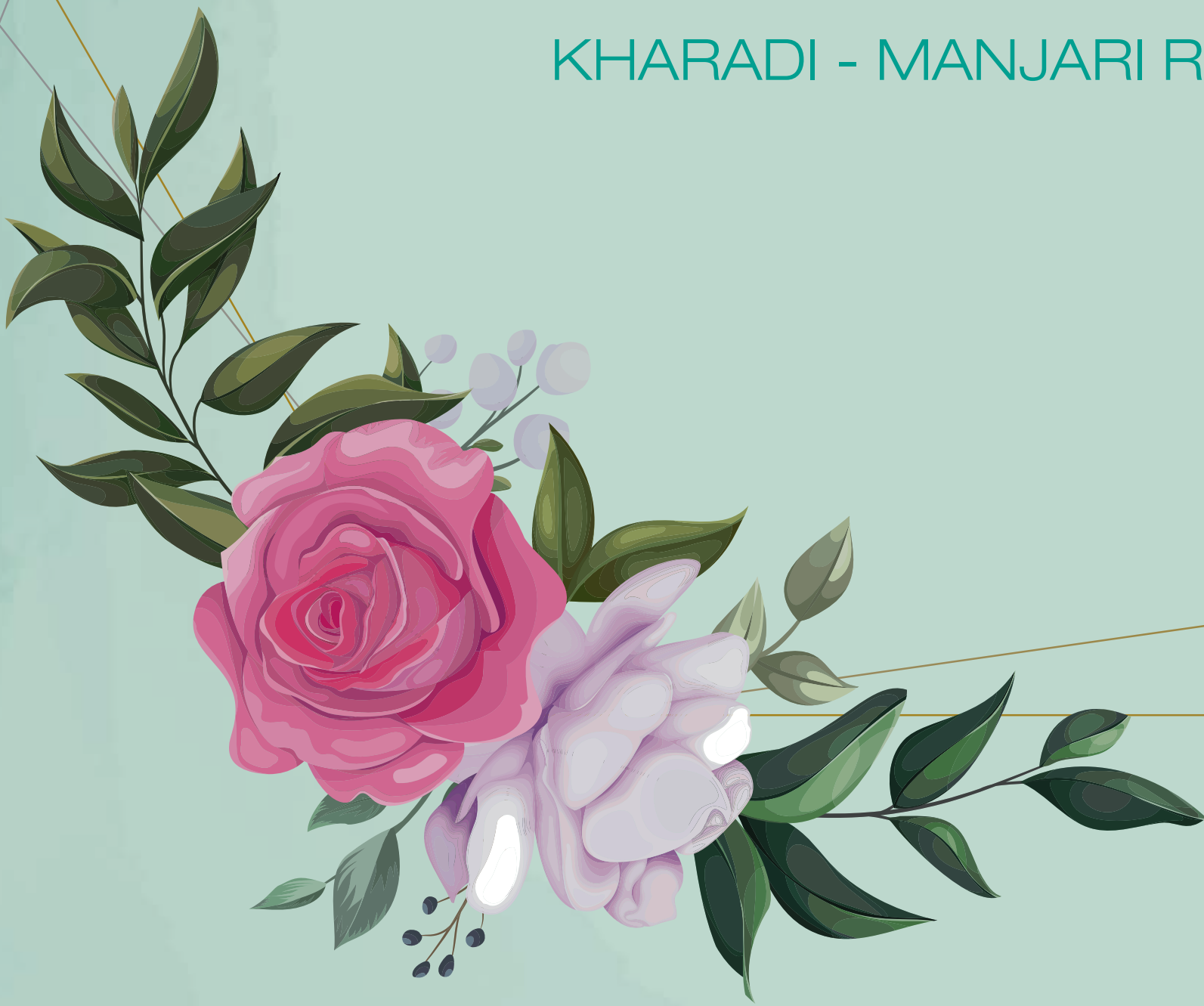


# GODREJ PARKRIDGE

KHARADI - MANJARI ROAD, PUNE





# BRAND GODREJ

Godrej Properties brings the Godrej Group philosophy of innovation, sustainability, and excellence to the real estate industry. Each Godrej Properties development combines a 124-year legacy of excellence and trust with a commitment to cutting edge design, technology and sustainability.



In recent years, Godrej Properties has received over 250 awards and recognitions:

- Including the 'Porter Prize' 2019
- 'The Most Trusted Real Estate Brand' in the 2019 Brand Trust Report
- 'Builder of the Year' at the CNBC-Awaaz Real Estate Awards 2019
- The Economic Times 'Best Real Estate Brand 2018'
- 'Real Estate Company of the Year' at the 8th Annual Construction Week India Awards 2018



# PROMINENT PRESENCE IN PUNE



**7,40,000+**  
M<sup>2</sup> SOLD



**8,500+**  
HAPPY FAMILIES

1 m<sup>2</sup> = 10.76 Sq. Ft.



# PUNE

## FAST-EMERGING COMMERCIAL CITY



Stock image for representative purpose only

Pune has become a strong base particularly for automobiles, IT and start-ups. The widespread economic activity has resulted in growing job opportunities and development of Pune's infrastructure and housing industry. Some of the major upcoming projects include:



128 km Pune Ring Road\*  
connecting 29 points of  
Pune



3 Metro Lines^ to connect  
key regions of Pune



Chhatrapati Sambhaji Raju  
International Airport#, Proposed  
Greenfield International Airport

Sources: \*<http://www.pmrda.gov.in>

\*<https://themetrorailguy.com/pune-metro-information-map-updates>

\*The metro rail and other infrastructure facility(ies) mentioned above are proposed to be developed by the Government and other authorities and we cannot predict the timing or the actual provisioning of these facility(ies), as the same is beyond our control. We shall not be responsible or liable for any delay or non-provisioning of the above.

\*<https://www.proptiger.com/guide/post/punes-international-airport-gets-a-go-ahead-to-boost-real-estate-market>



# MULTI-FACETED GROWTH IN MANJARI



Manjari is known for its pollution-free and open green spaces. With the sanctioned 30m DP Road\*, it is set to provide swift connectivity to Kharadi and prominent educational, IT and social hubs making it a sought after housing destination. Manjari is envisioned to be a smart, sustainable and future-ready solution for a convenient lifestyle.

\*[https://pmc.gov.in/informpdf/dp23vill/Final/RP\\_sector\\_A-H/SECTOR%20H.jpg](https://pmc.gov.in/informpdf/dp23vill/Final/RP_sector_A-H/SECTOR%20H.jpg)









# A WELL-CONNECTED LOCALE




GODREJ PARKRIDGE



-  School/College/Institute
-  Landmarks
-  Hospitals

-  Railway Station
-  Cinema Halls
-  Mall

-  Airport
-  Commercial Spaces
-  Bus Stand



\*Source: Google Maps. Map not to scale. | [https://pmc.gov.in/informpdf/dp23vill/Final/RP\\_sector\\_A-H/SECTOR%20H.jpg](https://pmc.gov.in/informpdf/dp23vill/Final/RP_sector_A-H/SECTOR%20H.jpg)



# BLOOMING SOCIAL INFRASTRUCTURE



## SUPER MARKET

- Reliance Mart - **5.5 KM**
- Decathlon Wagholi - **7 KM**
  - Phoenix Mall - **8 KM**
- Amanora Mall - **10 KM**
- Seasons Mall - **10 KM**



## BUSINESS PARKS

- EON IT Park - **6.5 KM**
- Zensar - **6.5 KM**
- Hadapsar Industrial Park - **11 KM**
- Magapatta IT Park - **12 KM**



## EDUCATIONAL INSTITUTIONS

- Holy Angels School -**1 KM**
- Oxford World School -**4 KM**
  - Sanskriti School -**4 KM**
- Podar International School -**4.5 KM**
- Lexicon International School -**5 KM**
- Victorious Kids Educare -**5 KM**
- Bishop's School -**12 KM**



## HOSPITALS

- Lifeline Hospital - **5 KM**
- Columbia Asia Hospital - **6 KM**
- Motherhood Hospital - **6 KM**
- Noble Hospital - **10 KM**



## HOTELS

- Lounge Fly High - **4.5 KM**
  - Radisson Blu - **6 KM**
  - Novotel - **9 KM**
- Hyatt Regency - **9 KM**
- Westin Hotel - **11 KM**



## AIRPORT

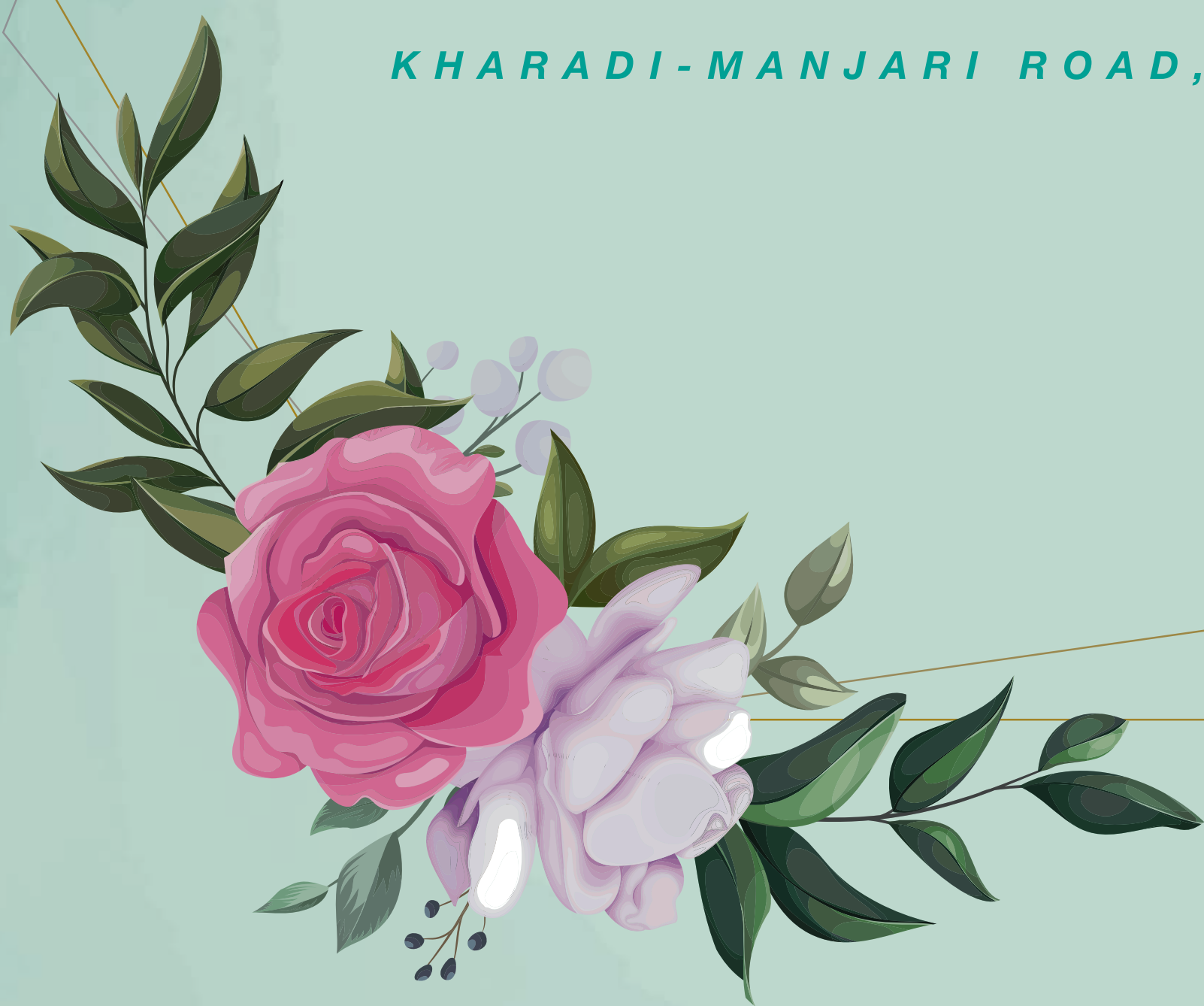
- Pune Airport - **10 KM**
- Upcoming Navi Mumbai International Airport - **121 KM**



— PRESENTING —

# #RIVERGREENS

*KHARADI-MANJARI ROAD, PUNE*





# WHERE LIFE BLOOMS BY THE RIVERSIDE

Stock image for representative purpose only

#Rivergreens is a sprawling township that stretches over 40 hectares along the Mula-Mutha River. It will have over 5 hectares of extensive green open spaces including a green 'necklace' that will ensure a tranquil environment and soothing views. Over 6500+ m<sup>2</sup> of lifestyle clubhouse, 2000+ m<sup>2</sup> of wellness centre and an expansive community centre will offer residents multiple avenues to celebrate life.

1 Hectare = 2.47 Acres | 40.44 Hectares = 99.95 Acres | 5.05 Hectares = 12.5 Acres  
1 m<sup>2</sup> = 10.7639 Sq. Ft. | 6763 m<sup>2</sup> = 72,800 Sq. Ft. | 2081 m<sup>2</sup> = 22,400 Sq. Ft.  
Areas are approximate.



# MASTER LAYOUT PLAN

#RIVERGREENS

KHARADI-MANJARI ROAD, PUNE



## LEGENDS

- |  |                               |                                     |
|--|-------------------------------|-------------------------------------|
| 1. Entry Experience and Exhibition Plaza | 19. Gardens                   | 35. Camping Area                    |
| 2. Amphitheater 1 and Open Classroom     | 20. Sector Clubhouse          | 36. Canopy Walk                     |
| 3. Toilet Block 1                        | 21. Central Clubhouse         | 37. Ravine Terraces                 |
| 4. School                                |                               | 38. Adventure Play Zone             |
| 5. Residential Parcel R6                 |                               | 39. Yoga Deck                       |
|  | <b>Central Plaza</b>          | 40. Pedestrian + Cycling pathway    |
|  | 22. Town Hall                 | 41. Waterbody                       |
|  | 23. Retail front              | 42. Manjari Commons                 |
|  | 24. Shared plaza              | 43. Public Parking                  |
|  | 25. Market                    | 44. Police Station                  |
|  | 26. Residential Parcel R8     | 45. Healthcare Facility             |
|  | 27. Economic Activities       | 46. Committed Parcels               |
|  | 28. Godrej Parkridge          | 47. Social Housing                  |
|  | 29. MLCP                      | 48. MSEDCL                          |
|  | 30. Entry Plaza               | 49. Solid Waste Management facility |
|  | 31. Connection to Ravine Park | 50. Bus Station                     |
|  | <b>Ravine Forest</b>          | 51. Fire Station                    |
|  | 32. Entry Deck                | 52. Future Residential Development  |
|  | 33. Machaan + Toilet Block    |                                     |
|  | 34. Picnic Zone               |                                     |

This is an artist's impression indicating the anticipated appearance of the ongoing development. The information is presented as general information and no warranty is expressly or impliedly given that the completed development will comply in any degree with such artist's impression or anticipated appearance. Map not to scale.





# EMBRACE THE GREEN NECKLACE

COVERING OVER 4 HECTARES

Relax and unwind in a lush green belt created especially for you. With over 5 hectares of city greens including 4 hectares of central greens, you will enjoy being surrounded with tranquility. This profusion of nature in all its glory will open your mind and refresh your body.

1 Hectare = 2.47 Acres | 5.05 Hectares = 12.5 Acres | 4.04 Hectares = 10 Acres. Areas are approximate.  
The 5 hectares of greens is open for public and not exclusive to residents.

Stock image for representative purpose only



# A MASSIVE CLUBHOUSE

SPRAWLED ACROSS 6500+ M<sup>2</sup>



Stock image for representative purpose only

The intricately crafted clubhouse spanning over 6500+ m<sup>2</sup> boasts of a myriad of Olympic and indoor sports facilities to relax, rejuvenate and unwind. With a choice of sporting activities you can hone your skills at any sport of your choice or master them all.

**Olympic games such as:**

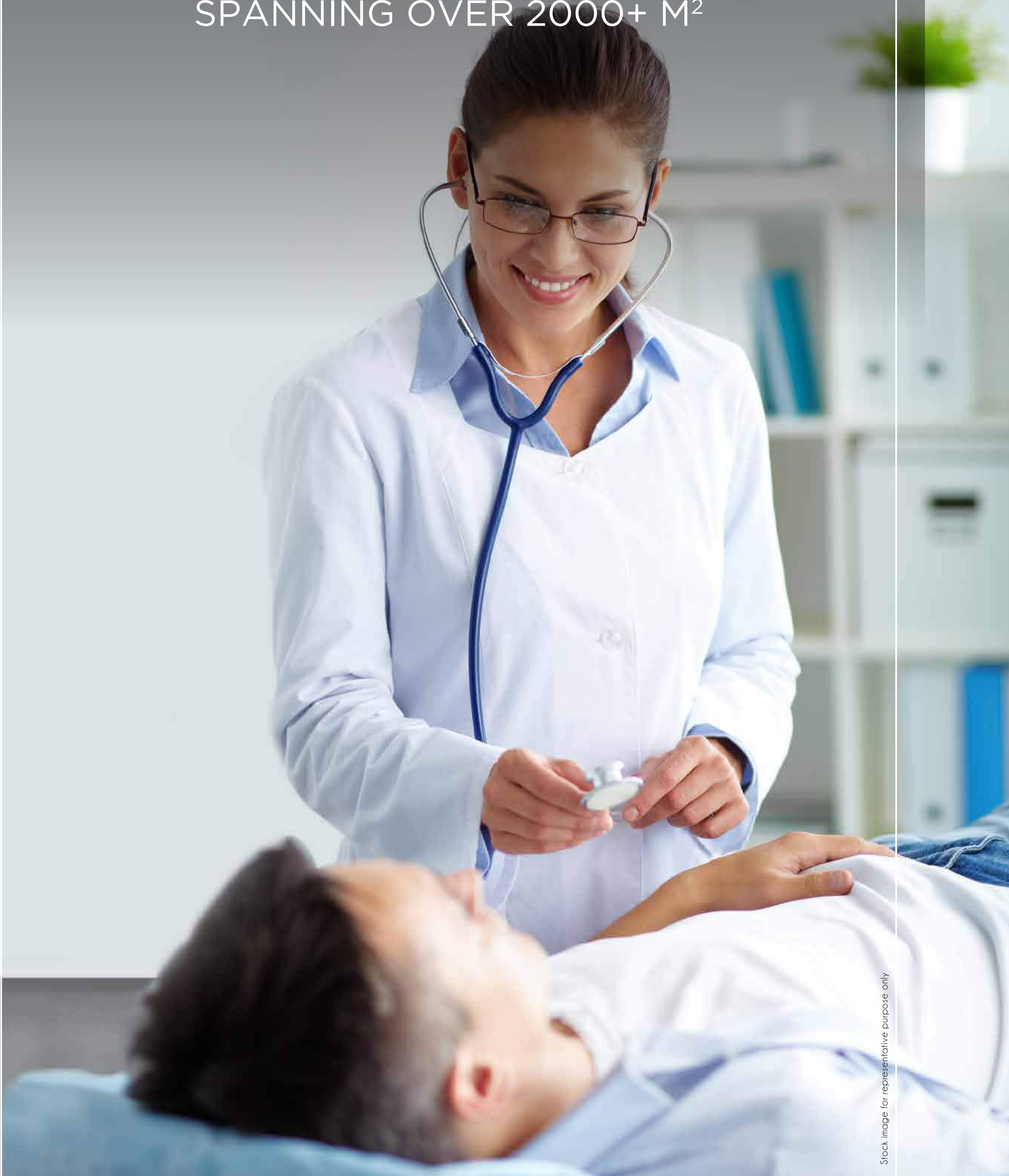
- Boxing
- Weight Lifting
- Gymnastics
- Archery
- Table Tennis
- Badminton
- Swimming Pool
- And many more...

1 Hectare = 2.47 Acres | 5.05 Hectares = 12.5 Acres | 4.04 Hectares = 10 Acres Areas are approximate.  
Access to the Township Master Club is membership based.



# EXCLUSIVE HEALTH CENTRE

SPANNING OVER 2000+ M<sup>2</sup>



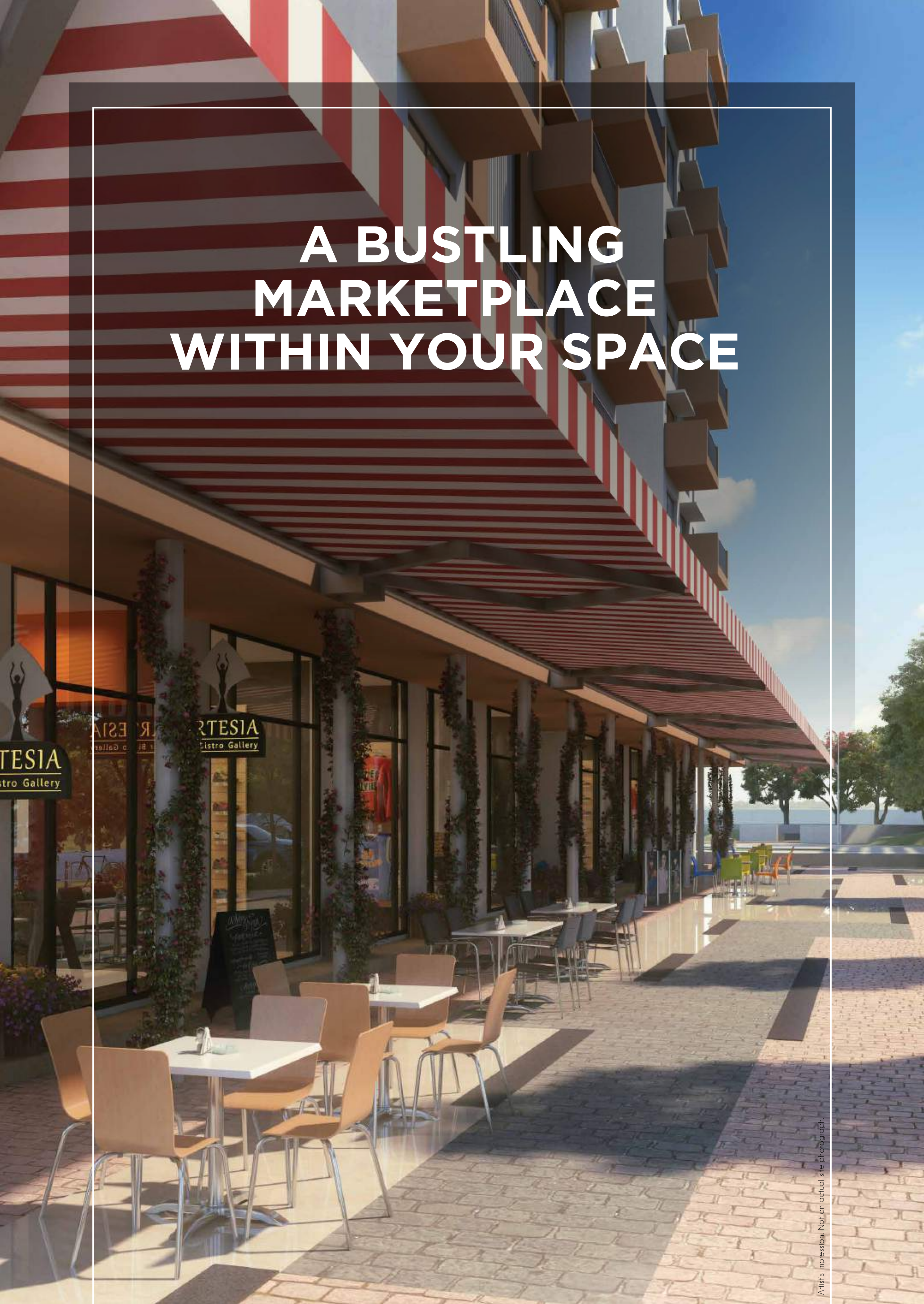
Stock image for representative purpose only

The Health Centre stretches over 2000+ m<sup>2</sup> offering an array of wellness services and activities. Housing OPD services, emergency healthcare, 24x7 pharmacy, physiotherapy, nutritionist and health cafes, the health centre makes sure your loved ones are taken care of.

1 m<sup>2</sup> = 10.7639 Sq. Ft. | 2081 m<sup>2</sup> = 22.400 Sq. Ft. Areas are approximate.  
The Health Centre would be operated by a third party and would be open for public and not exclusive to residents.



# A BUSTLING MARKETPLACE WITHIN YOUR SPACE



Artist's impression. Not an actual site photograph.

#Rivergreens offers you convenience for all your shopping needs at a centrally located community market spanning over 700+ m<sup>2</sup>. From daily essentials to lifestyle conveniences, you will find easy access to all your needs.

1 m<sup>2</sup> = 10.7639 Sq. Ft. | 743 m<sup>2</sup> = 8000 Sq. Ft. Areas are approximate.



# AN EXCLUSIVE SCHOOL

## FOR CHILDHOOD TO BLOOM



Stock image for representative purpose only

Children of the township will have access to quality education wherein they will be groomed into enterprising individuals. In addition, there is an array of utilities that make living more convenient and safe, which include:

- Fire Station
- Bus Terminal
- Public Parking
- Waste Management
- Police Station
- MSEDCL Power Station
- Water Treatment Plant



— LAUNCHING —



**GODREJ PARKRIDGE**







# EMBRACE GOOD HEALTH IN THE LAP OF NATURE

A BLOOMING LIFE AWAITS YOU



Artist's impression. Not an actual site photograph.





# YOURS NATURALLY

Welcome to an address where close to 80% open space invites you to breathe freely. Here, over 1 hectare of vehicle-free greens surround your home. Nestled amidst a 40-hectare township, here a 1 Km nature trail, a fruit orchard, herbal garden and a rejuvenating swimming pool come together to create a naturally healthy lifestyle. It will be the perfect place to grow and explore your potential as you celebrate the joy of living.



Stock image for representative purpose only



Over 1 Hectare  
of Vehicle-free  
Greens



Close to 80%  
Open Spaces



500+ Oxygen  
Enhancing Trees



1Km Nature  
Trail



Fruit Orchard  
with 5+ Species



Herbal Garden  
with 10+ Species



Lotus Pond For  
Meditation

1 Hectare = 2.47 Acres | Areas are approximate.





# NATURE-INSPIRED AMENITIES

---

Come, embrace nature in all its glory. At Godrej Parkridge, the various nature-inspired amenities entice you to cherish the natural surroundings and live life to the fullest.







# GET PLAYFUL AMIDST A LUSH GREEN EXPANSE

## OVER 1 HECTARE OF VEHICLE-FREE GREENS

An active start to the day begins here. Over 1 hectare of vehicle-free greens create the perfect setting for the entire family to bond over a game or two.



1 Hectare = 2.47 Acres | Areas are approximate.

Stock image for representative purpose only





# CHERISH ABUNDANCE ALL AROUND YOU

CLOSE TO 80% OPEN SPACES

Stay at a well-connected location and cherish the abundance of space. With close to 80% open spaces and natural surroundings, here you can experience living in a green haven.







# EXPERIENCE BLISS IN EVERY BREATH

500+ OXYGEN ENHANCING TREES

Breathing deeper is a great way to improve your overall health. When coupled with fresh air coming from 500+ Oxygen-enhancing trees, you can be sure that you are embracing wellness in every breath.







# BEGIN YOUR DAY ON A HEALTHY NOTE

## 1 KM NATURE TRAIL

Well begun is half done. Have a healthy start to your day with a rejuvenating walk on 1 km nature trail. Listen to the bird songs, witness the vibrant hues of nature and cherish the good life.







# ENJOY THE FRESHEST PICK OF THE DAY

## FRUIT ORCHARD WITH 5+ SPECIES

Whether you love cold pressed juice or like to savour fruity goodness in every bite, the fruit orchard with 5+ species gives you a great reason to make healthy eating habits a part of your daily routine.





# GET YOUR DAILY DOSE OF NUTRITION

## HERBAL GARDEN WITH 10+ SPECIES

Whether you have a continental, oriental or Indian palate, the herbal garden with 10+ varieties of fresh herbs is a great way to enhance flavours and get balanced nutrition every day of the week.



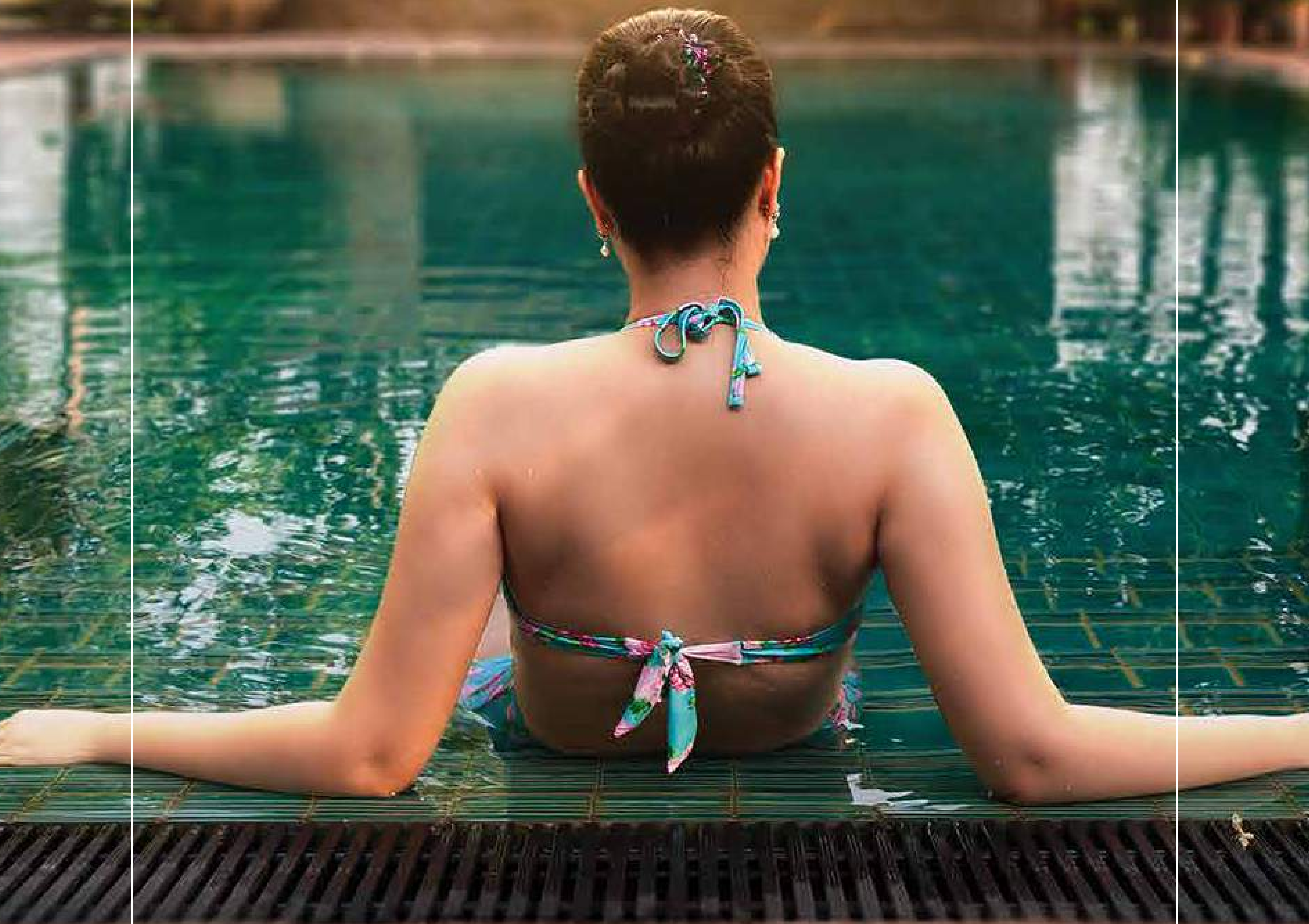




# MAKE A SPLASH WITHOUT A CARE

## REJUVENATING SWIMMING POOL

There is nothing more refreshing than going for a few laps after a long day. The luxury of having a rejuvenating swimming pool gives you yet another reason for a dip.





# MASTER LAYOUT PLAN

## GODREJ PARKRIDGE

KHARADI - MANJARI ROAD, PUNE



This is an artist's impression indicating the anticipated appearance of the ongoing development. The information is presented as general information and no warranty is expressly or impliedly given that the completed development will comply in any degree with such artist's impression or anticipated appearance. Map not to scale.