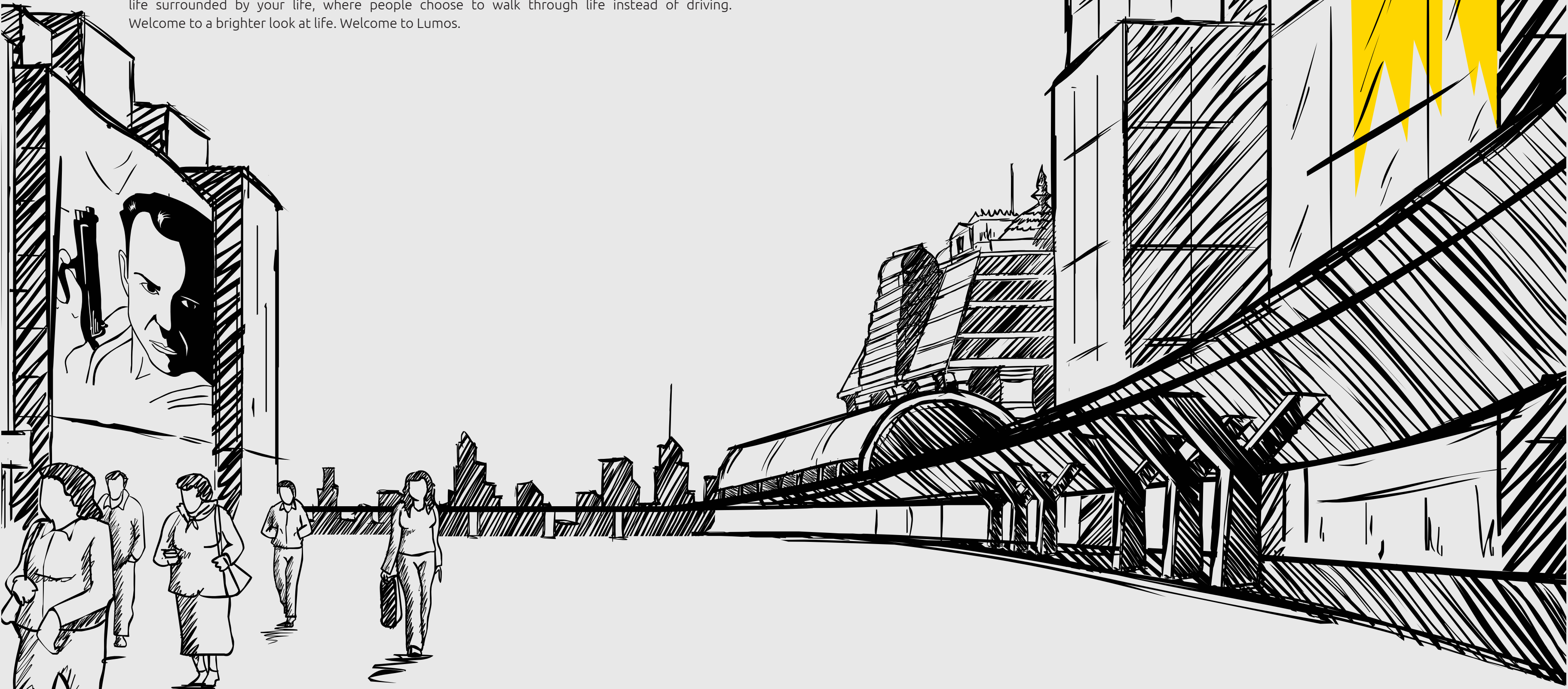
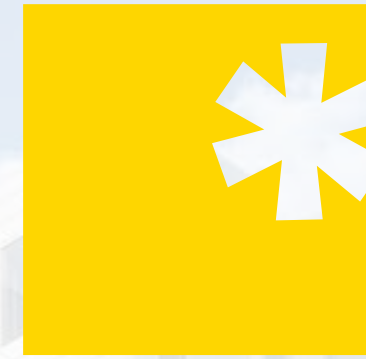


LUMOS
Let in Light. Let in Life.

Life has not moved to the outskirts.

Yeshwantpur is the heart and soul of millions, their lives revolving around this sprawling western suburb of Bangalore. In an area where the city is vying for space, stands tall a new ray of light, a new life surrounded by your life, where people choose to walk through life instead of driving. Welcome to a brighter look at life. Welcome to Lumos.





LUMOS
Let in Light. Let in Life.

 Live in the Light.

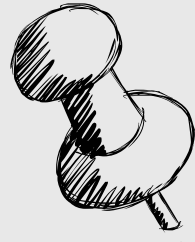
Located in the heart of Yeshwantpur, the naturally lit homes at Lumos offer you easy connectivity to the rest of Bangalore. With a choice of 2, 3 BHK and Duplex Apartments, Lumos has something to suit everyone's taste. The architectural highlights of the project are two high-rise, 15 storey towers connected the centre by duplex units. Through design that opens out to the world outside, expressed by high ceilings, double height patios, world-class amenities, and sunlit courtyards, life at Lumos is bathed in the beauty and tranquillity of nature's greatest gift – light.

After all, light is life. Let it in.



LUMOS
Let in Light. Let in Life.

Yeshwantpur
Railway Station
1200 mtrs



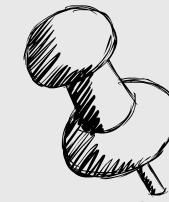
Chord Road
250 mtrs



Metro Cash & Carry
600 mtrs



World Trade Center
700 mtrs



Columbia Asia Hospital
700 mtrs



Sheraton Hotel
600 mtrs



Orion Mall
600 mtrs



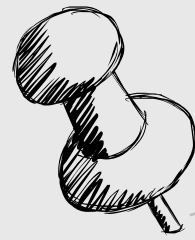
Metro station
900 mtrs



Yeshwantpur
Metro Station
400 mtrs



Iskcon Temple
700 mtrs





MEKHRI CIRCLE

Connected to your life.

Lumos offers easy connectivity to all of Bangalore, while keeping everything your life desires right around the corner. In close proximity to both Yeshwantpur and Peenya Industrial Areas, work and life will never be far away.

With Orion Mall, Columbia Asia Hospital, the upcoming Metro Train Station, and Yeshwantpur Railway & Bus Stations just a stone's throw away, you get a home that's in the middle of all the action, yet cocooned in a space that belongs solely to you. Located 5 minutes from West of Chord Road and Tumkur road, and right next to ISKCON, Lumos offers you a bright life not just inside, but outside as well.

LUMOS
Let in Light. Let in Life.

VIJAYANAGAR

BANGALORE CITY RAILWAY JUNCTION

MAHATMA GANDHI ROAD

YESHWANTPUR

YESHWANTPUR RAILWAY STATION

YESHWANTPUR METRO STATION

MATHIKERE

METRO CASH & CARRY

COLUMBIA ASIA HOSPITAL

SHERATON HOTEL

WORLD TRADE CENTRE

ORION MALL

MALLESHWARAM

SANKEY TANK

NANDINI LAYOUT

METRO STATION

MAHALAKSHMIPURAM ENTRANCE

CHORD ROAD

DR. RAJKUMAR ROAD

OUTER RING ROAD

MYSORE SANDAL SOAP FACTORY

METRO STATION

RAVINDU TOYOTA

NARAYANA NETRALAYA

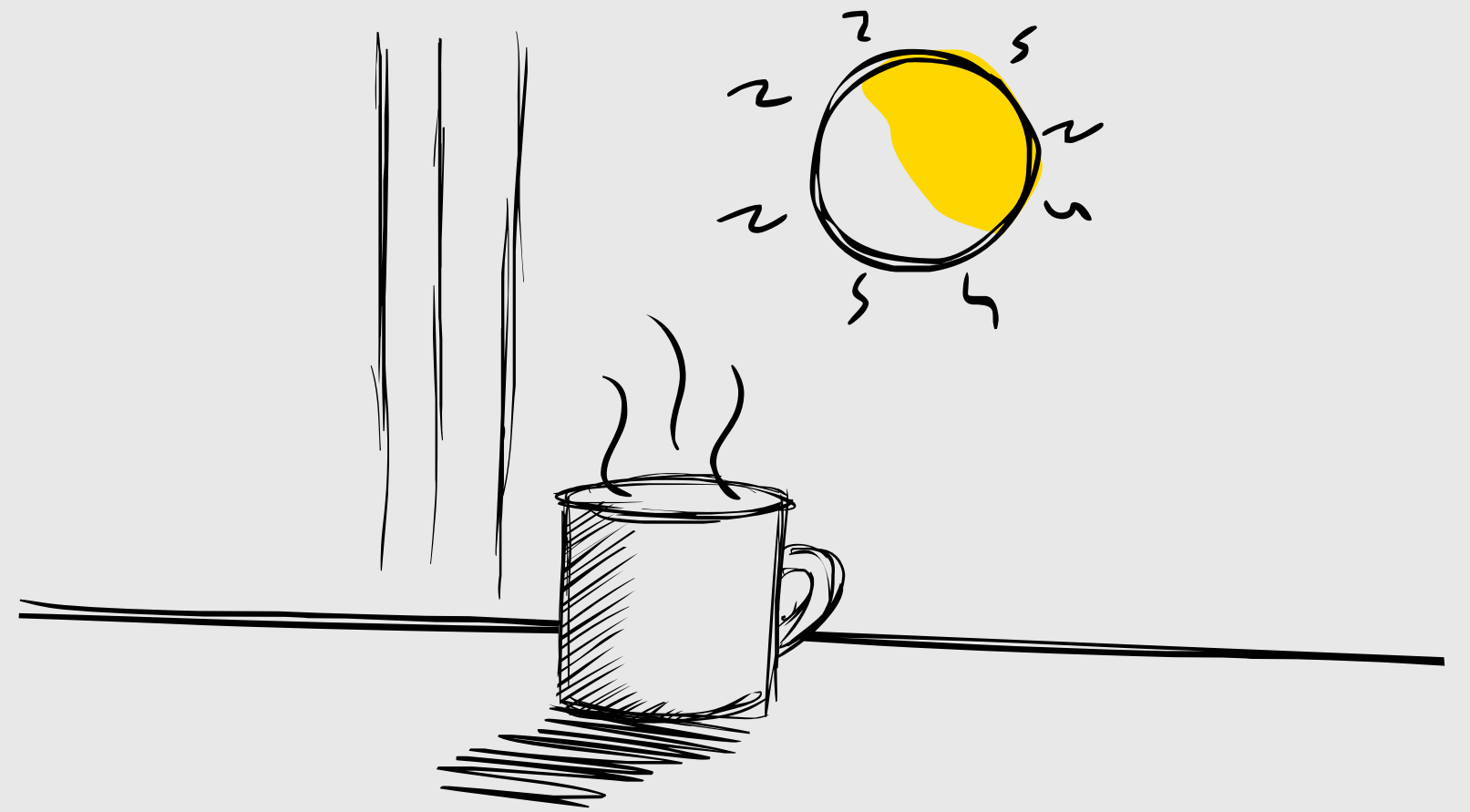
ISKCON

METRO STATION

RAJAJINAGAR

A space for you to find your space.

Unrestricted, beautiful views of the city around beckon you to step out, take a deep breath, and welcome the sky into your home. The double height patios at Lumos extend your home beyond walls, blessing you with the space you've always longed for.





✦ Double Height Patio

 Living Room





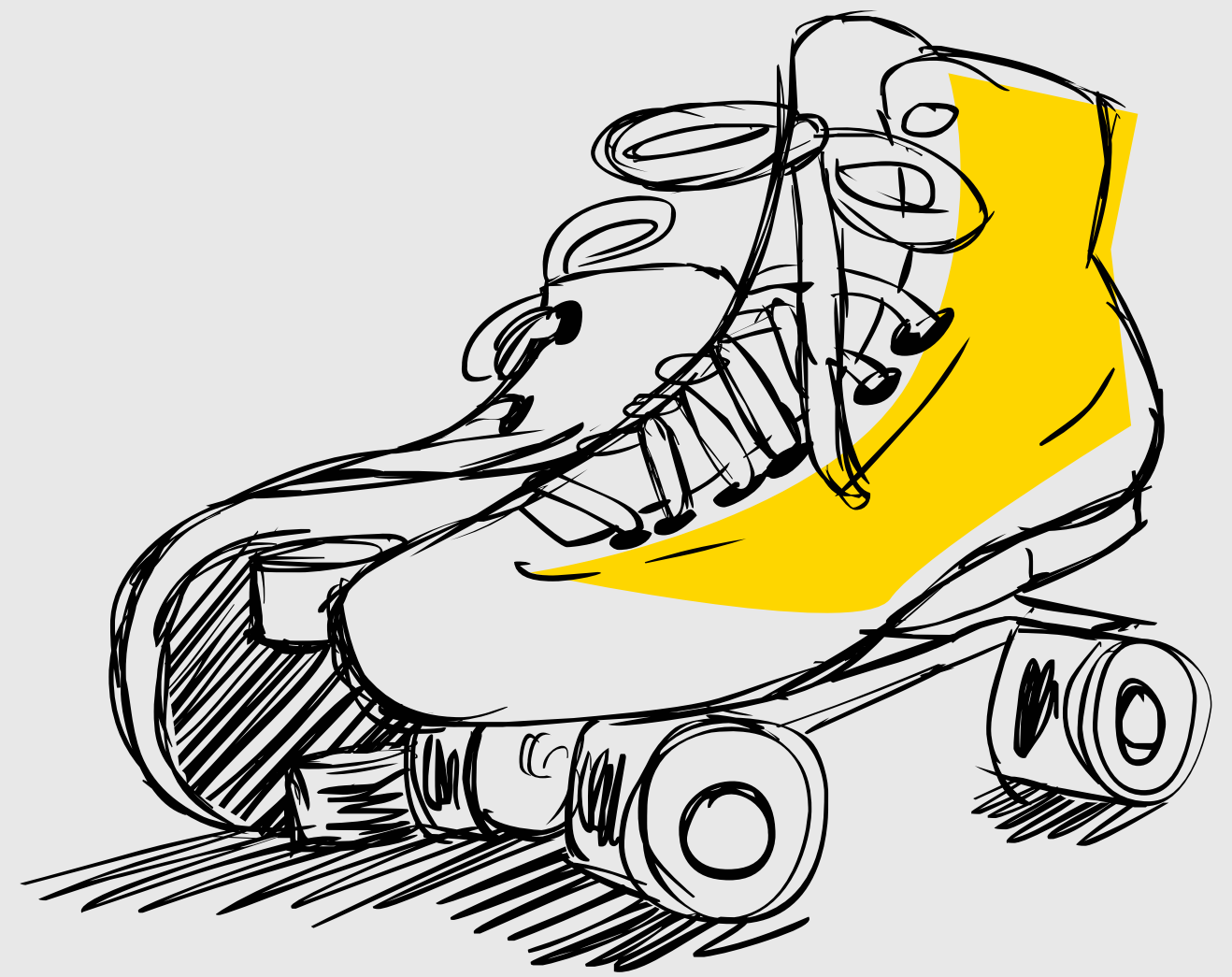


✦ Designed
for a brighter life.

Step into Lumos, and the first thing that catches your eye is the water cascade glistening in the light, a prelude to what awaits inside. Thereon, from the sun-kissed courtyards right up into your home, Lumos illuminates your life from the moment you enter the project: a large paved plaza leads into the garden, a series of landscaped courts, arcaded promenade, and open sunlit spaces, all woven into impeccably planned community spaces that lead past the reception lounge, the party hall, and indoor games pavilions.

These pavilions are surrounded by landscape and water bodies with views opening into courts that are physically separated, but visually part of the overall community experience.

Shift
between work
and family time
with ease.



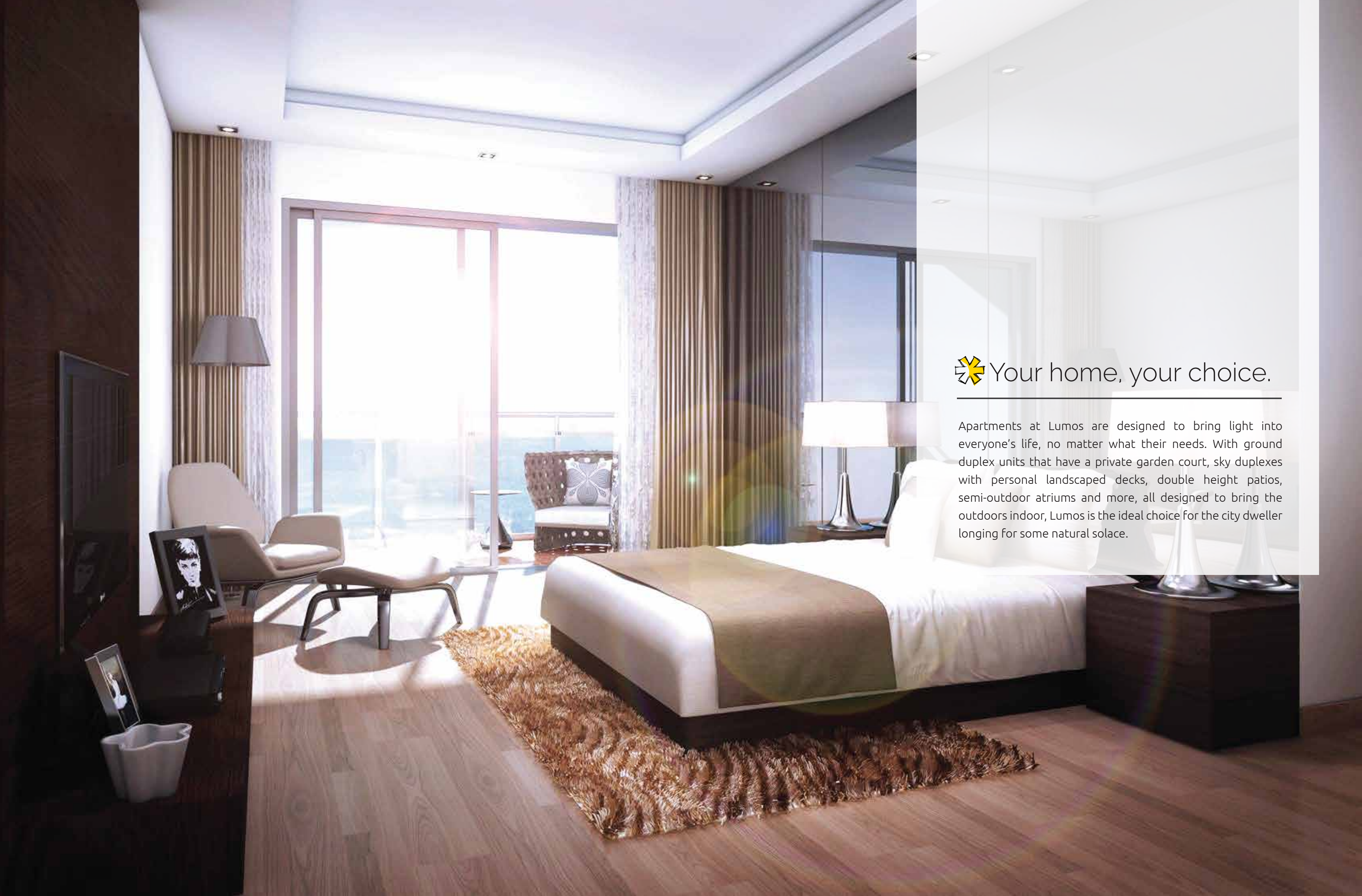



A silhouette of a woman running on a path at sunset. She is wearing a cap and athletic wear. The background is a warm, golden glow from the setting sun, with palm trees and a building visible in the distance.

Everything you wish for.

After a long day at work, you'll always come home to the good life at Lumos. With world-class amenities ranging from a swimming pool and gym to a skating rink and basketball practice court, Lumos offers you a wide choice of recreational activities for all ages. With state-of-the-art facilities that please, surprise, and delight, you can always choose between fitness, fun, or simple relaxation.

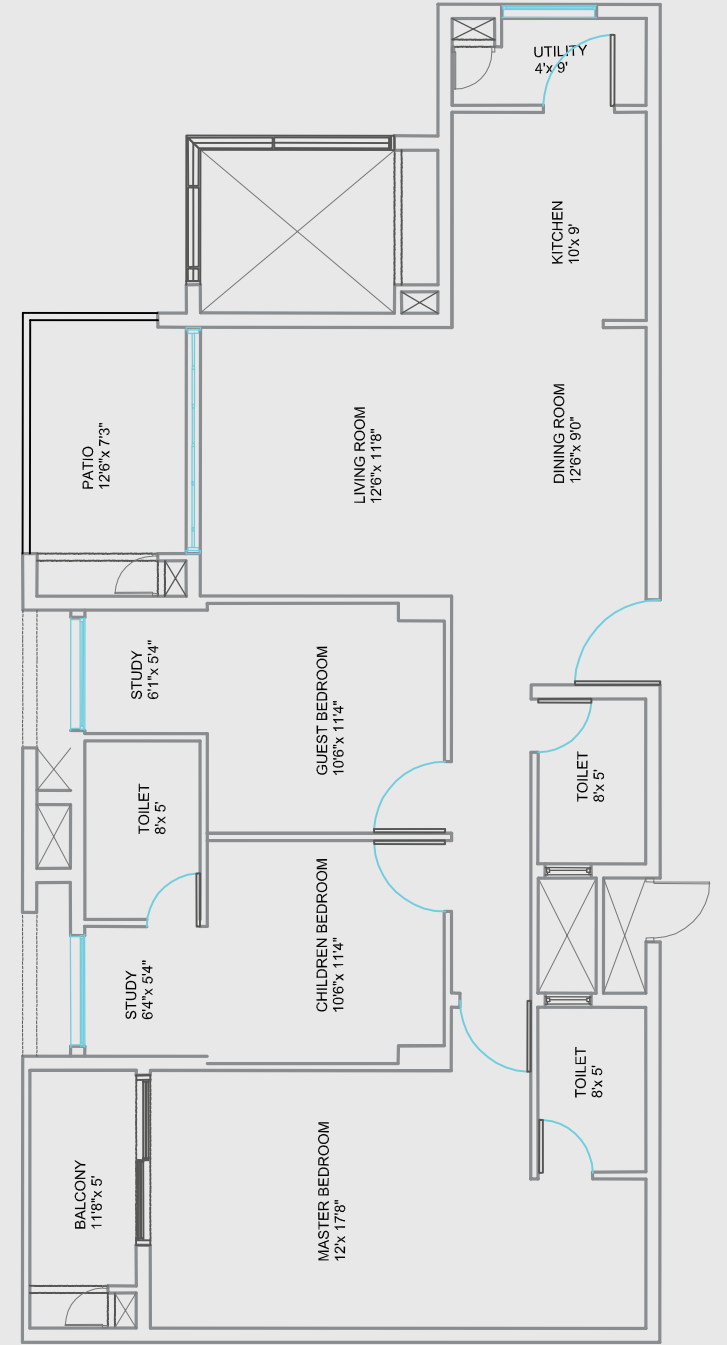
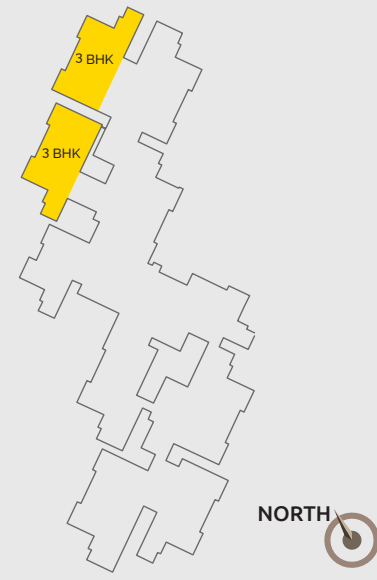
- Swimming Pool • Gym • Indoor Games • Multi-purpose Hall
- Amphitheater • Children Play Area • Badminton Court
- Basketball Court • Skating Rink • Walking and Jogging Track



 Your home, your choice.

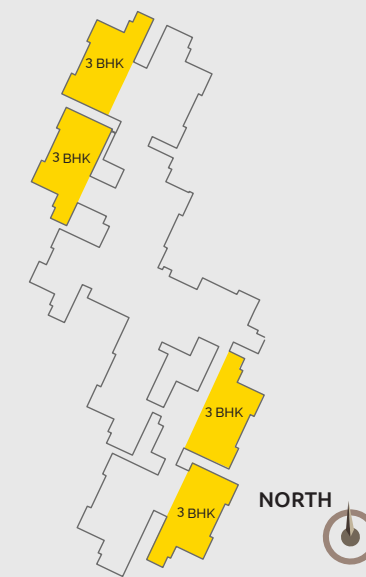
Apartments at Lumos are designed to bring light into everyone's life, no matter what their needs. With ground duplex units that have a private garden court, sky duplexes with personal landscaped decks, double height patios, semi-outdoor atriums and more, all designed to bring the outdoors indoor, Lumos is the ideal choice for the city dweller longing for some natural solace.

3 BHK (1876 sq. ft.)



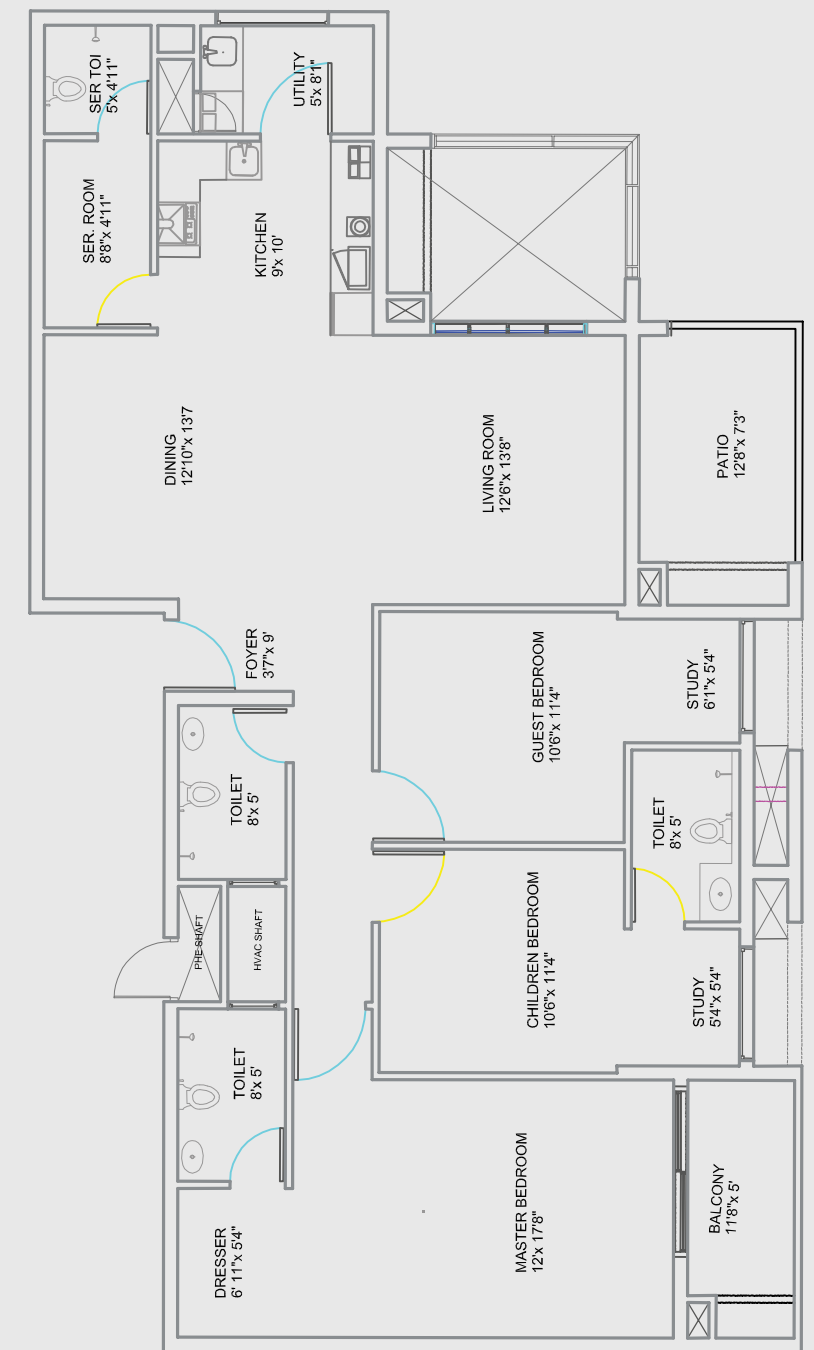
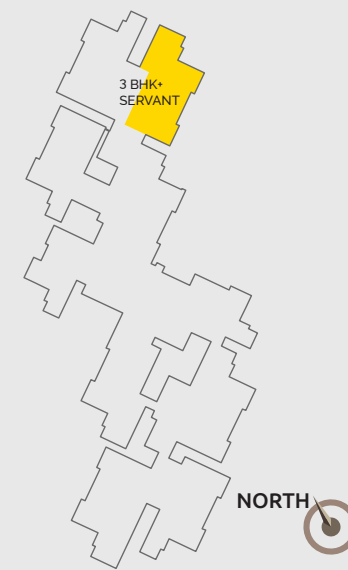


3 BHK (1876 sq. ft.) TYPE B



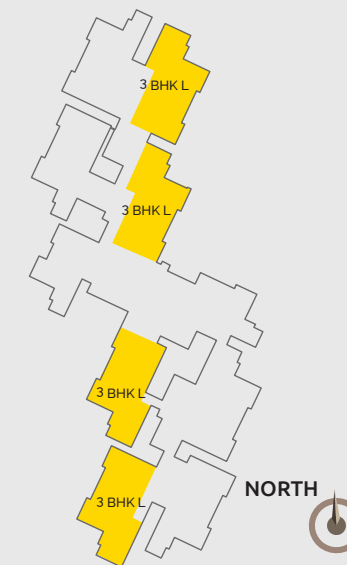


3 BHK with
Maid's Room (2260 sq. ft.)



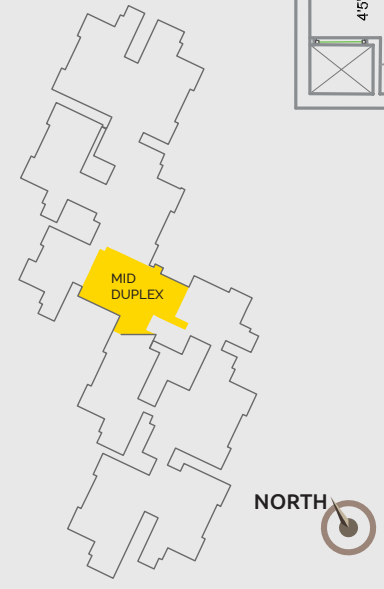
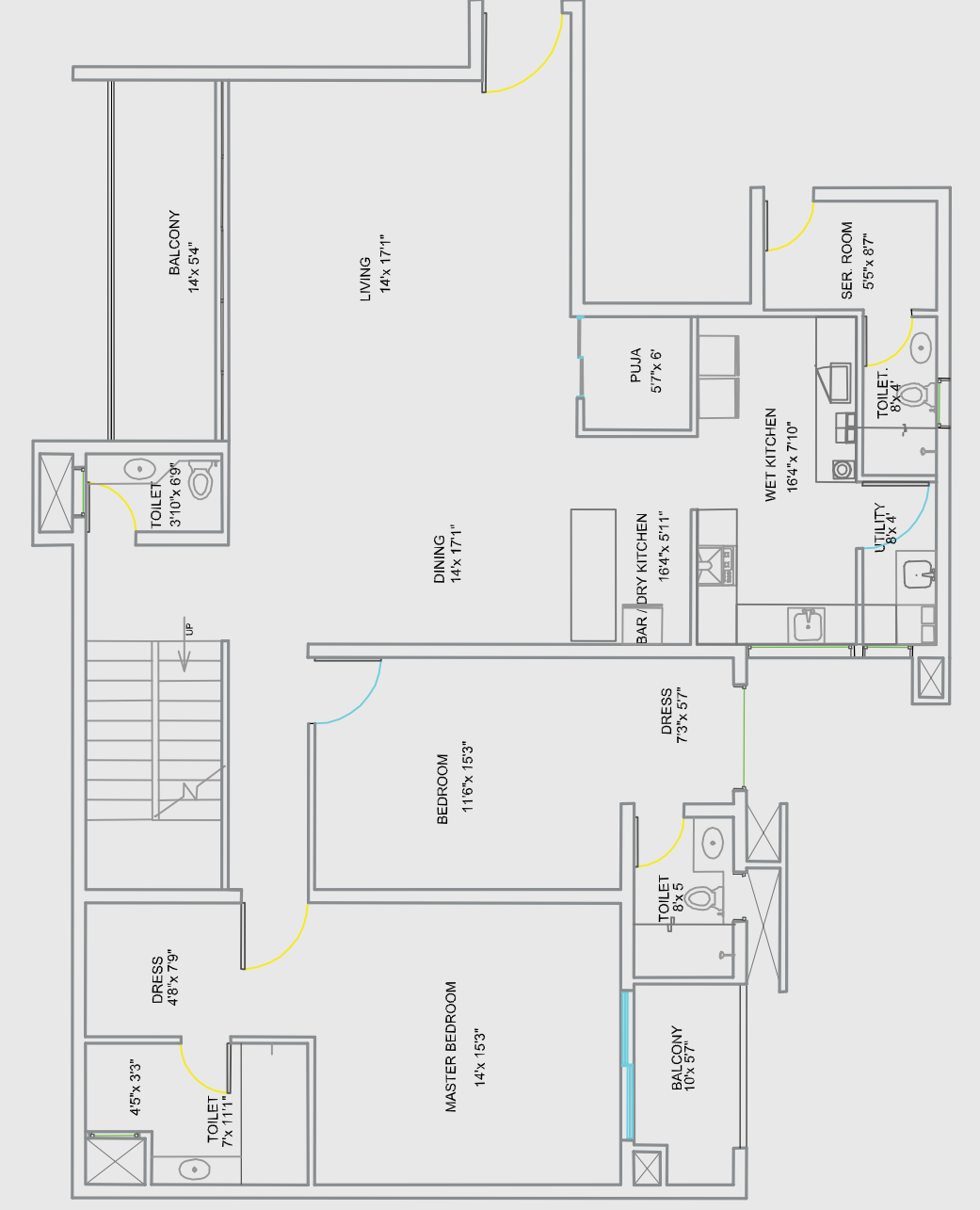


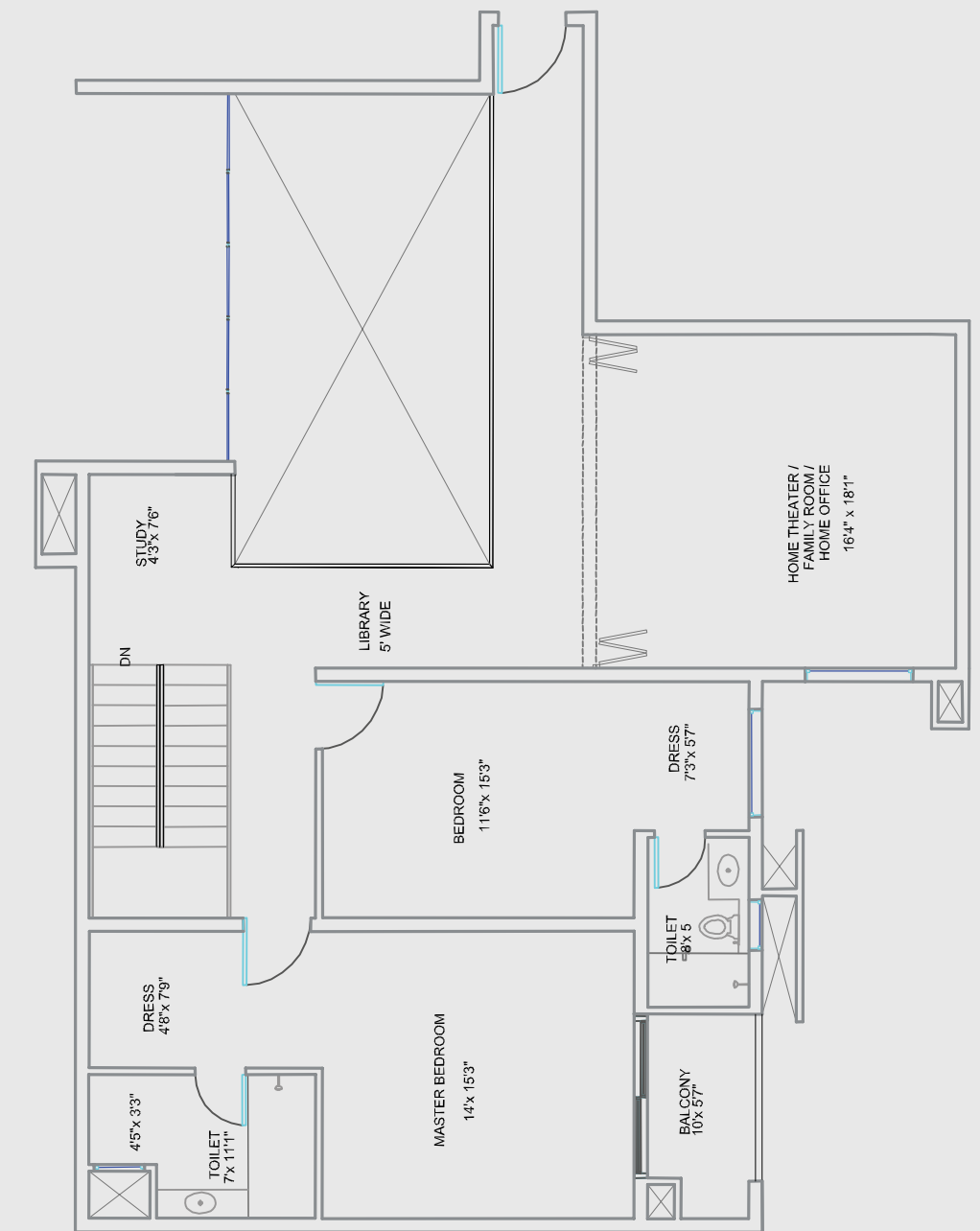
3 BHK with Maid's Room
(2260 sq. ft.) TYPE B





Duplex Apartment
(Lower Level)





Duplex Apartment
(Upper Level)

About Assetz Homes

The residential arm of the prestigious Assetz Property Group, Assetz Homes currently has 6 projects in the pipeline in various stages of their lifecycle. With about 45 lakh sq. ft. of development space in their repository, Assetz Homes is fast emerging as one of India's leading developers, following in the footsteps of the MIPIM ASIA AWARDS 2009 winning Assetz Property Group. Founded in 2006, Assetz Property Group has developed over three 3 million square feet of predominantly 'A' grade commercial office spaces in Bangalore, lending a strong financial and technical backing to Assetz Homes.

About the Architects – Chandavarkar and Thacker

Chandavarkar & Thacker, also known as CnT Architects, is a second generation architecture firm carrying forward the legacy of Bangalore's first architectural practice formed by the late Mr. Narayan Chandavarkar in 1947. Established in 1983, CnT Architects are responsible for some of India's most prestigious projects. With a healthy mix of residential, institutional, and commercial spaces under their belt, CnT Architects are the driving force behind Lumos.



Everything your life desires, within arm's reach.

Life at Lumos is anything but ordinary, an exclusive space of repose set against a bustling urban background. Surrounded by everything that defines your life, yet away from everything that confines it, a home at Lumos is a haven – a splendid sanctuary of space filled with natural light. Come, experience life in the light. Experience life at Lumos.

