

VDA APPROVED



Site Address :
Om Nagar Colony, Near Kashi Enclave
Akatha, Pahariya, Varanasi

Developers :
Visionary Buildtech Pvt. Ltd

Off: 209-210, Karpatri Smriti Estate, Durgakund, Varanasi



SPECIFICATION :

Flooring:

2' x 2' Vitrified tiles in living, bedroom, dining and kitchen.
Anti-skid ceramic tiles in balcony & bathrooms.

Doors & Windows:

Apartment door & windows are made by hard wood finished with paint / polish.

Kitchen fittings:

Granite kitchen counter.
2' wall tiles (DADO) above kitchen counter.
Stainless steel sink.

Painting:

Long-lasting weather proof paints for building exteriors.
POP finished interior walls & ceiling.

Electrical fittings:

Concealed conduit with copper wiring for electrical fittings throughout the apartment.
3 phase connection for all apartments.
Inverter connection in all switch boards.
Modular switches provided for all apartments.
Connection for Washing machine in one Balcony.

Bathroom:

C. P. fitting of Jaguar or equivalent.
Sanitary ware of parryware, hindware or equivalent.

Power:

Power back-up generator for common area lighting, lifts & water pump.
Separate transformers for the entire area.

Water:

Two Nos. of Deep borewell for continuous water supply.
Dedicated overhead tank for each Block
Back-up generator for pumps

High-speed lifts:

4 high-speed passenger lifts (2 for each Block).
Power back-up from generator to ensure uninterrupted operation of lifts.

Parking:

Covered car parking at two levels

Intercom & Cable TV:

Intercom facility consolidated with guard house.
Provision of Cable TV Wiring.

SPECIAL FEATURES :

- Earthquake resistant RCC frame structure.
- Central Park (60% open area and only 40% covered area).
- Highly equiped Gymnasium.
- Terrace Garden.
- Separate Reception and waiting area on entrance of each blocks.
- Multi Purpose Hall, Library, Society office, Indoor game.
- Area for jogging.
- Rain water harvesting plant.



1
2 & 3
BHK

raj
TOWERS



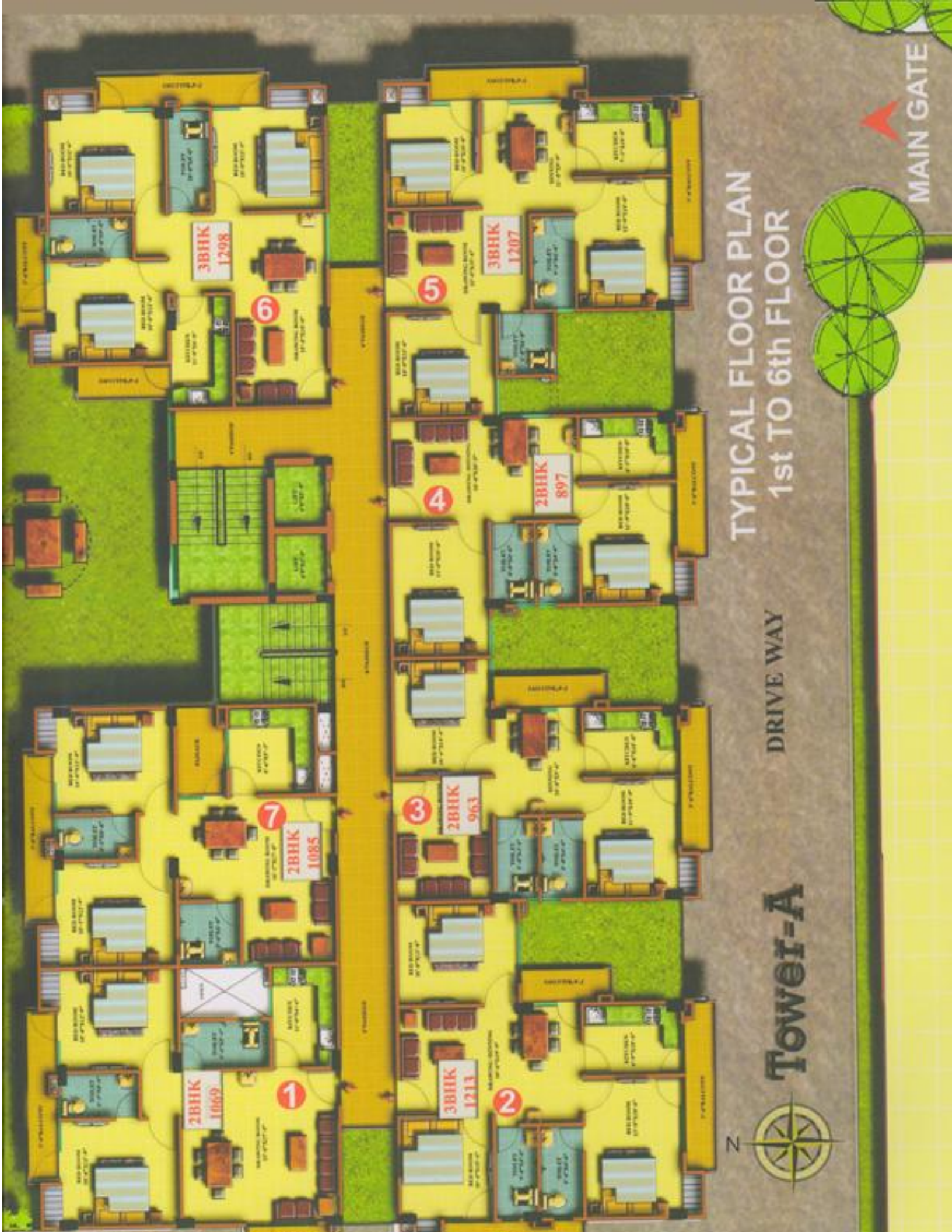
Tower-B

DRIVE WAY



PARK

PARK



TYPICAL FLOOR PLAN 1st TO 6th FLOOR

DRIVE WAY

MAIN GATE

Tower-A



Tower-B

NORTH



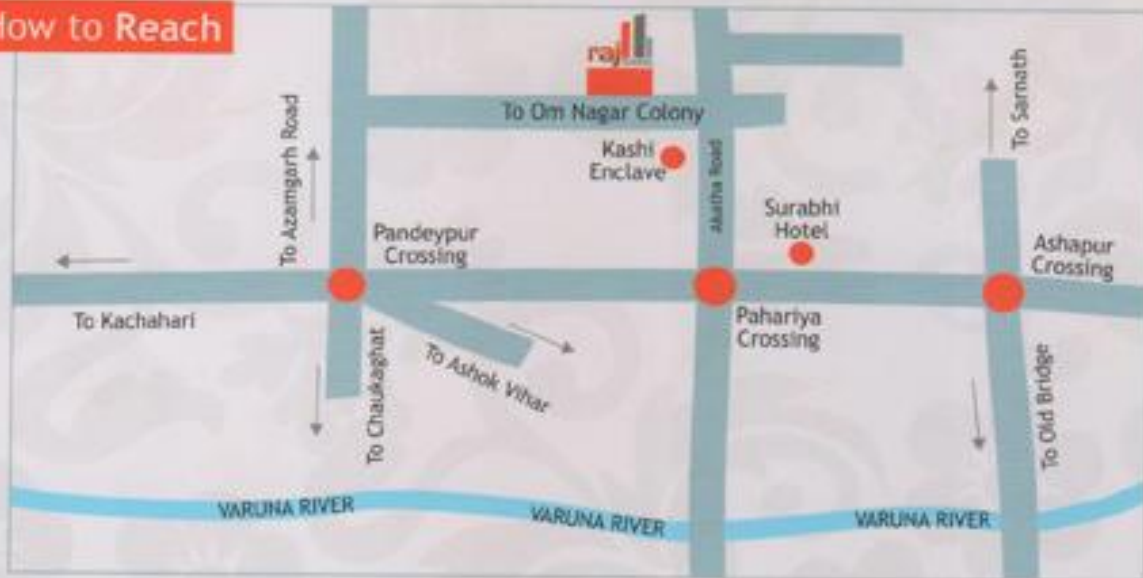


PARK
(GROUND LEVEL)

TERRACE FLOOR PLAN
7th FLOOR

Tower-A

How to Reach



Architect : Neev Architects # 9565253237

Site Address :
Om Nagar Colony, Near Kashi Enclave
Akatha, Pahariya, Varanasi

Developers :



VISIONARY
Buildtech Pvt. Ltd.

Off: 209-210, Karpatri Smriti Estate, Durgakund, Varanasi

CONTACT FOR MORE DETAILS:

Mob: 8572942109, 9415453072

Note! Visual representation in this brochure are purely conceptual and are not a legal offering further the promoters / architects reserves the right to change the layout, plans, specifications or features without prior notice or information.