



RUDRA
Heights 
2,3,4 BHK APARTMENTS

Height of Festivity

RUDRA
Heights
2,3,4 BHK APARTMENTS

VARANASI CITY



Thought to be one of the world's oldest cities, Varanasi is the holiest city of the Hindus, who call it Kashi. There are about 1,500 temples and shrines.

The city is also a major trading center and a rail hub. With more than one million people visiting the holy city annually, it is a major tourist destination for national and international travellers. The popularity of its silk brocades and brassware attracts traders from all over the country.

Besides, the city is also very popular for Benares Hindu University and Engineering Colleges.

Fast gaining the high-flying status, the infrastructural facilities and effortless approach of this legendary city coupled with rising incomes and rising standard of living has created tremendous demand for quality living options.



Homes where the mind is at peace, kids and elderly feel safe, infrastructure and amenities are of highest standards and the location is easily accessible - are some of the features we all desire. Rudra Heights located at Paharia, has been designed keeping in mind your needs, desires and aspirations.

THE PROJECT



OUR PROJECTS

UPCOMING PROJECTS

- RUDRA PRATISTHA, Sharda Nagar, Kanpur
- RUDRA SANSKRITI, Brij Enclave, Varanasi
- RUDRA PALACE, Manduadih, Varanasi
- RUDRA ROYALE, Chandpur, Varanasi
- RUDRA SAMPADA, Shivpur, Varanasi
- RUDRA ENCLAVE, Allahabad

ONGOING PROJECT



The Mall Road, Kanpur



COMPLETED PROJECT



RUDRA RESIDENCY, Swaroop Nagar, Kanpur

RUDRA APARTMENTS, Shivpur, Varanasi



COMPLETED PROJECT

RUDRA GREENS, Singhpur, Kanpur



ONGOING PROJECT

RUDRA TWIN TOWERS, New Berry Road, Lucknow





RUDRA TOWERS, Sunderpur, Varanasi



GROUP PROFILE

Rudra Real Estate Ltd. is one of the most promising Real Estate Developers in Northern India with its Promoters having 15 years of experience in residential and commercial sectors. The company has wide experience in residential segment with currently 20 projects under its execution and planning. Varanasi, Kanpur and Lucknow are its chief operational areas whereas Allahabad and various other cities will witness the group's persistent expansion. The expertise of the company is in developing excellent residential complexes with quality amenities for better standard of living. A wide range of satisfied clientele vouches for their value for money being associated with this company.

CORPORATE FOCUS

- Redefining lifestyle
- Investing in system & human resources
- Commitment to build better construction with timely completion

CORPORATE BELIEF

- Committed towards customers satisfaction
- Continuously innovating to give comprehensive solutions
- Complete detailing at every stage of construction
- Ensuring optimum value addition, uncompromising attitude towards quality
- All this to bring to you additional comfort & confidence in our commitment

THE PATHFINDERS

The company is the brain child of Mr. Anoop Agrawal, a first generation entrepreneur and a visionary. Apart from being the Chairman of Rudra Real Estate Ltd., he is also the promoter and Director of Gigantic Securities Ltd.

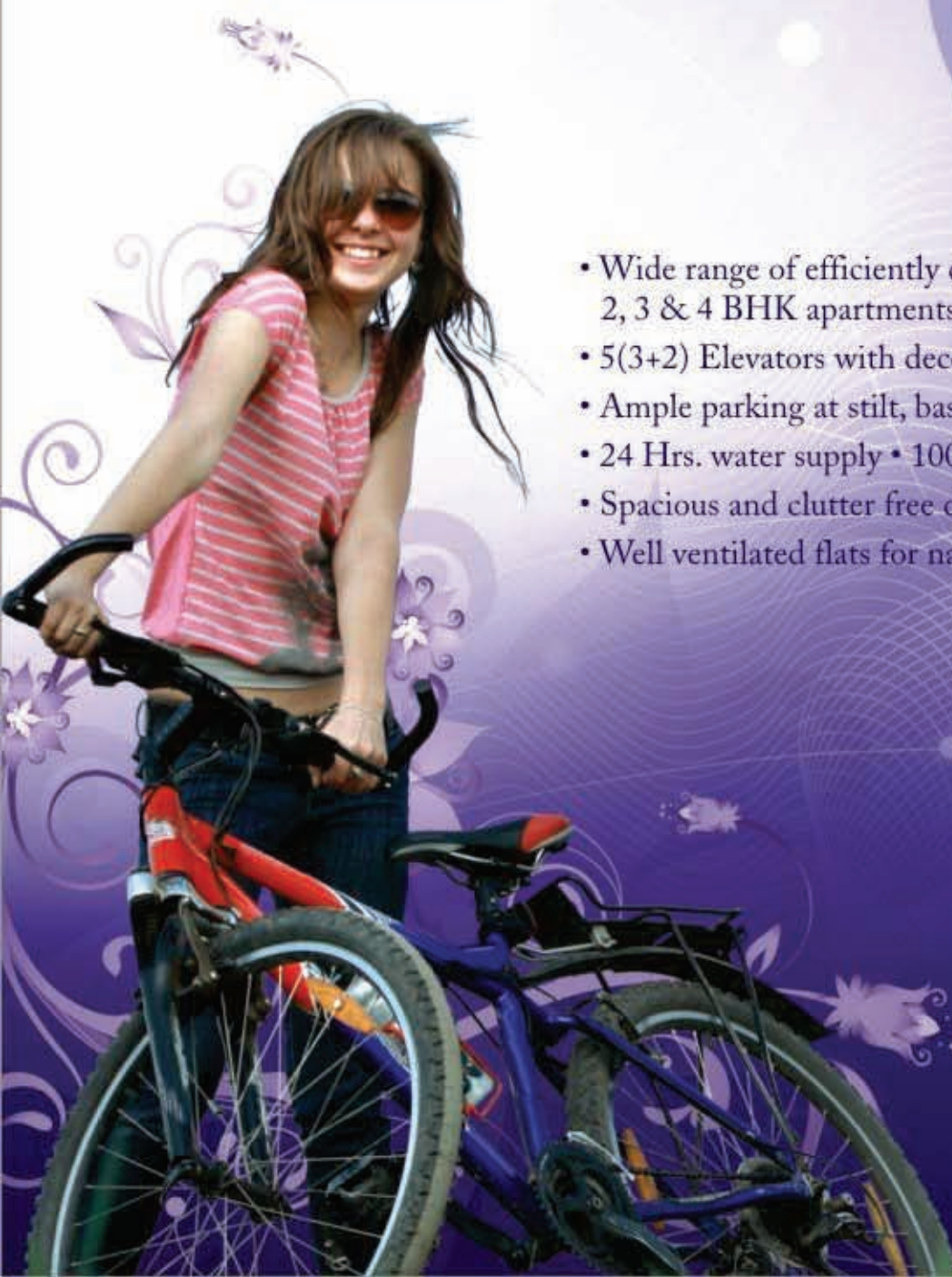
Mr. Arun Agrawal is serving as the Managing Director of this company whose motto is to make India a better place to live in.

Mr. Anand Agrawal and Mr. Nikhil Agrawal, Directors of the company are also giving their valuable experiences.



RUDRA Heights

2,3,4 BHK APARTMENTS



- Wide range of efficiently designed 2, 3 & 4 BHK apartments
- 5(3+2) Elevators with decorative lobby
- Ample parking at stilt, basement
- 24 Hrs. water supply • 100% Power backup
- Spacious and clutter free designs of blocks
- Well ventilated flats for natural light & cross ventilation

The interiors are custom suited to the requirements of urban lifestyle. The designing of the apartments has been done to assure optimum utilisation of space and at the same time offer complete privacy to the residents inside the home.

The wall finishes, floorings, bathroom tiles, sanitary and electric fittings are all of high standard from reputed companies.



Designed by a highly skilled team of architects and engineers, the focus has been on functionality and services that match with hectic lifestyle of modern urban dwellers. Showcasing regular design and symmetry, the apartments are well ventilated, with large spacious balconies and brighten up with natural light.

THE FEATURES



**FINANCE FACILITY
FROM LEADING BANKS**



The magnificence and grandeur of a luxurious lifestyle gets reflected in the host of amenities and features at the club's indoor and outdoor facilities.

The club house has been designed to cater to different tastes and preferences and an effort has been made to segregate the activities accordingly.



THE AMENITIES





RUDRA Heights

2,3,4 BHK APARTMENTS

- Swimming pool with changing room & shower
- Yoga pavilion • Badminton court • Fully equipped gym
- Indoor Games - Pool table, Table tennis, Caromboard

The fast paced lifestyle today requires special focus on health and fitness regime. With well trained staff and highly skilled instructors, the Gymnasium at Rudra Heights is equipped with state-of-the-art fitness equipment. The fitness experts at the club would chart out a complete diet and exercise program taking into consideration the hectic lifestyle and physical requirements of its privileged members.

The group exercises include yoga, meditation and aerobics with special programs for seniors and kids too. The activities at the club have been meticulously planned keeping in mind the suave urban lifestyle.



RUDRA Heights

2,3,4 BHK APARTMENTS



- Jogging/Walking trail • Temple
- Pollution free ambience due to peripheral vehicular access
- Rain water harvesting system • Amphi theater
- Convenient shopping centre for everyday need
- Kids Area- Slides, Swings & See-Saw

An environment which appeases you and your lifestyle. The architectural design of Rudra Heights is based on the transect model, where the man-made environment blends into the natural environment seamlessly.

Separate play area for kids and sitting areas for elderly have been designed in the landscaping. Manicured lawns and well maintained gardens will enthrall the residents.





The comforts of living in an independent gated community cannot be overstressed. While you can socialise and interact with the peer group in the club and activity areas, the apartment serves as a calm and serene cocoon offering privacy and solitude.

The safety & security of the residents has been the prime concern in the design of the apartments.

- Earthquake resistant RCC framed structure
- Brick coba treatment on terrace for heat reduction
- Common washroom/toilets for domestic employees
- Visitors entry only after authorization
- Entire complex enclosed within high fenced security wall
- Single gated entry
- Intercom facility from each apartment
- 24 x 7 security at entry and exit gate
- Anti termite treatment

SAFE & SECURE



SPECIFICATIONS



STRUCTURE

Earthquake Resistant RCC framed structure designed by qualified structural engineers.

FLOORING

LIVING/DINING/BED ROOMS

2' x 2' Vitrified Tiles.

KITCHEN/BALCONY/TOILETS

Anti Skid Ceramic Tiles.

STAIRS

Selected Marble/Kota.

CORRIDORS

Anti Skid Ceramic Tiles.

PARKING & DRIVE WAY

Paved / Concrete.



WALL FINISH

LIVING/DINING/BED ROOMS

POP base with Oil Bound Distemper (OBD).

External Façade of Walls
 Weather Coat / Equivalent Paint.

KITCHEN

Designer Ceramic Tiles dado upto 2' above working Granite.
 Platform/counter and POP base with OBD in remaining area.

TOILETS

Designer Ceramic Tiles dado upto 7'height and POP base with OBD in remaining area.

BALCONY

Weather Coat/Equivalent Paint.

LIFT LOBBIES

Selected Marble/Granite Cladding.



CEILING

LIVING & DINING

POP base with OBD and Cornice.

BEDROOMS

POP base with OBD.

KITCHEN / TOILET / BALCONY/CORRIDORS

POP base with OBD.

DOORS AND WINDOWS

DOORS

Skin Panel Doors.

WINDOWS

Painted Hardwood frame and fully glazed shutters with MS Grill and Powder Coated Fittings.



CP FITTINGS/ FIXTURES

KITCHEN

Jaquar / Equivalent, Stainless Steel Sink.

TOILETS

Jaquar / Equivalent Single Lever Diverter, conventional fittings.

UTILITY BALCONY

Point for Washing Machine.

SANITARY WARE

Cera / Equivalent White or Off White Colour.



ELECTRICAL WORK/ POINTS

LIVING/DINING/BEDROOMS

Provision for AC points in Drawing & Dining.

Provision for AC points with wiring in Bedrooms.

KITCHEN

Power Points for Fridge, Exhaust, Mixer Grinder, Water Purifier.

TOILETS

Geyser Points.

RAILINGS

BALCONY

MS Railings with MS Handrail

THE STRUCTURE

Comfort and concern personifies at Rudra Heights with a well-thought-out and premeditated infrastructure. Every corner and angle of the cherished place casts an environment friendly and cosmic spell on its owners. Perfection and modernity join hands mutually to present a wonderful mingle of nifty lifestyle and structural setting.

Each apartment is spacious enough to give the feeling of independence. Thought has been paid to comfort & simplicity in living rooms and privacy in bedrooms.

Space has been utilized to optimum and every angle has been subjected to perfect consideration. All the major and minor details have been dealt with supreme concern to highlight the visibility of space and composition. An intense effort has been made to construct comfy homes within a compact township that makes an additional effort to present plenty of amenities.



SITE PLAN

OTHER AMENITIES

- MULTIPURPOSE HALL
- FULLY EQUIPPED GYM
- INDOOR GAMES
- RECEPTION & WAITING AREA
- CONVENIENT SHOPPING
- AMPLE PARKING





LEGENDS

1. ENTRY GATE
2. GUARD ROOM
3. JOGGING TRACK
4. FOUNTAIN WITH SITTING AREA
5. DOUBLE HEIGHT ENTRANCE
6. SWIMMING POOL WITH CHANGING ROOM
7. TEMPLE
8. BADMINTON COURT
9. AMPHITHEATER
10. COMMON TOILET
11. KIDS PARK
12. ACTIVITY PARK/PARTY LAWN
13. POOL SIDE SITTING AREA

4 BEDROOM PLAN

TYPE - 1

SUPER AREA : 2130.00 SQFT.



3 BEDROOM PLAN

TYPE - 2

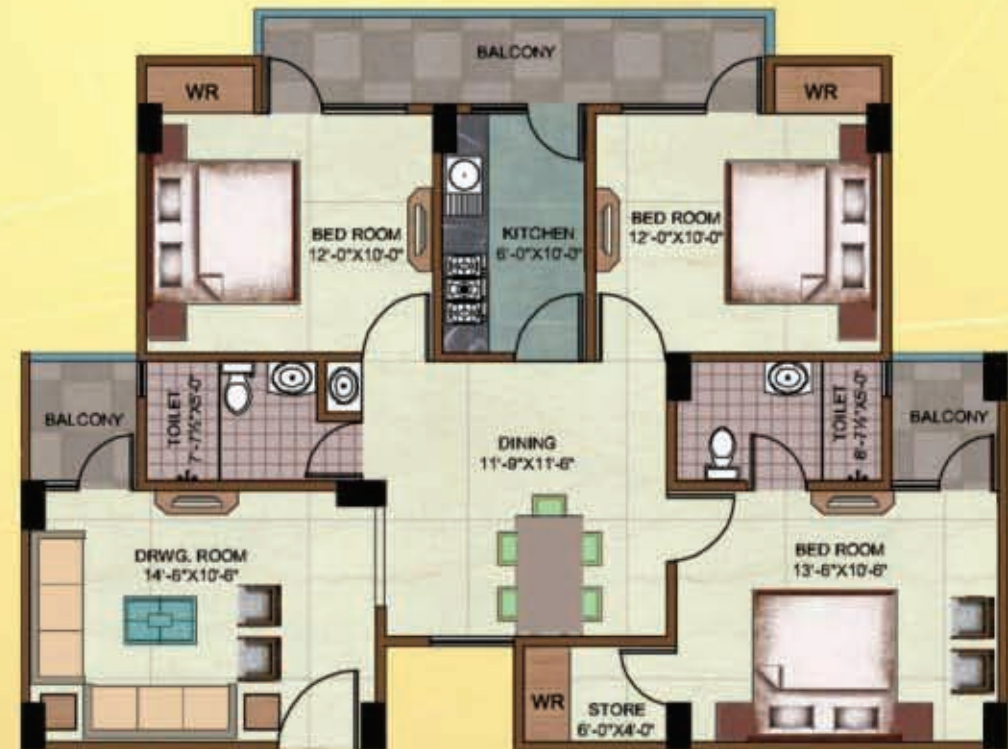
SUPER AREA : 1570.00 SQFT.



3 BEDROOM PLAN

TYPE - 3

SUPER AREA : 1425.00 SQFT.



3 BEDROOM PLAN

TYPE - 4

SUPER AREA : 1620.00 SQFT.



4 BEDROOM PLAN

TYPE - 5

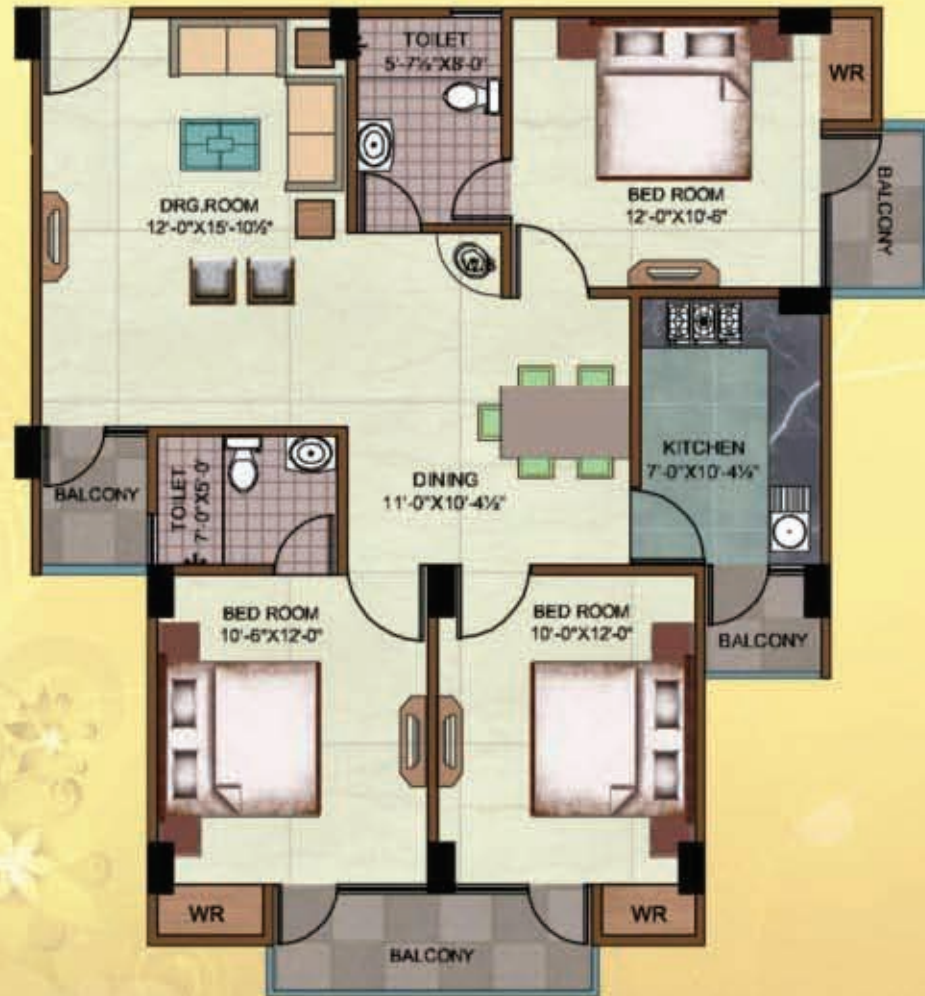
SUPER AREA : 1860.00 SQFT.



3 BEDROOM PLAN

TYPE - 6

SUPER AREA : 1415.00 SQFT.



2 BEDROOM PLAN

TYPE - 7

SUPER AREA : 1235.00 SQFT.



2 BEDROOM PLAN

TYPE - 8

SUPER AREA : 1190.00 SQFT.

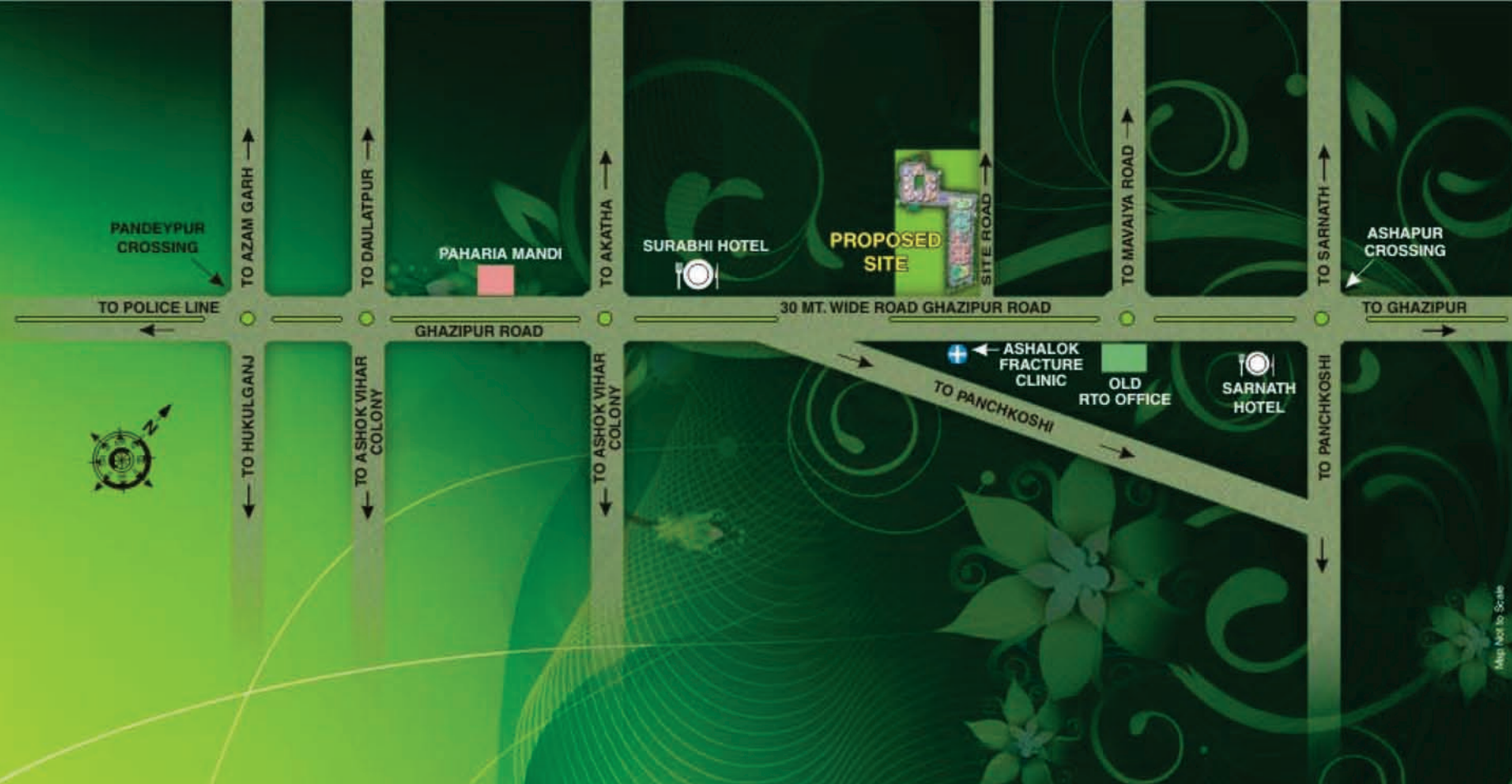


3 BEDROOM PLAN

TYPE - 9

SUPER AREA : 1405.00 SQFT.





Regional Office :

Rudra House, C-27/273, C-13,
Indian Press Colony,
Maldahiya, Varanasi - 221002
Ph: 0542 - 3271000/9000
Mob. No. : +91 7897993901-06
E-mail: sales.vns@rudra.net.in

Zonal Office :

1st Floor, Satya Business Park
1 Nawal Kishore Road
Hazratganj, Lucknow - 226001
Ph: 0522 - 3922610/11
Mob. No. : +91 7897770037/38
E-mail : sales.lko@rudra.net.in

Corporate Office :

5-Upper Ground Floor, Himalaya House
23 K.G. Marg, Connaught Place
New Delhi - 110001
Ph: 011 - 49434943
Mob. No. : +91 7042191111 / 8527797510
E-mail: sales@rudra.net.in

Rudra Real Estate Ltd.
(Builders & Developers)

Our Projects: DELHI - NCR | LUCKNOW | VARANASI | ALLAHABAD | KANPUR | GORAKHPUR
www.rudrarealestate.com



Member of
CREDAI

CERTIFIED BY : ISO 9001: 2008



Scan QR-Code with
your mobile and
know more about us



sms RUDRA to 56161

Follow us:

Note : This brochure is purely conceptual and not a legal offering. The developer reserves the right to amend / alter the area, layout, elevations, specifications and amenities. Elevations used in the brochure are purely artistic impressions and tend to change with / without prior notice.