



Jaipur | Kishangarh | Ajmer | Bhilwara | Jodhpur | Udaipur | Khatushyam Ji | Bikaner | Barmer | Mumbai

Corporate Office:

8th Floor, The Milestone, Tonk Road, Jaipur (RAJ.), India
P: +91 141 4090777 | sales@uniquegroup.in | www.uniquegroup.in

Site Address: Unique-Savi Emporia, Jagatpura, Jaipur (RAJ.), India

Disclaimer: This brochure is not a legal document and just describes the developer's intended conceptual plan. Specifications and details provided are tentative and may change at sole discretion of developer and/ or the architects.

unique-savi
EMPORIA
A LUXURY FULL OF LIFE

IT'S NOT JUST A
BOUNDARY WALL THAT
SEPARATES ONE LOCATION
FROM THE OTHER

It has a clear blue sky overhead, a lot of well-manicured green spilled underneath and a hassle-free neighbourhood in between; altogether an exclusivity that becomes your identity is exactly what makes this place unique. And with an imprint of eminence and excellence in each built, boundaries indeed become way too small to make Unique Emporia stand apart.





WHERE THE SKIES
CHEERFULLY EMBRACE
YOUR WORLD AROUND

When your address becomes the talk of the tinsel town, there isn't much left for others to boast of. Being an absolute mark of a lifestyle you always desired to imprint, Unique Emporia promises a perfect living you certainly deserve. And with Unique in the name, everlasting prints of your fame always become the mighty milestone frames.

unique-savi

EMPORIA

A LUXURY,
FULL OF LIFE

A perfect location and a perfect lifestyle; with everything you'll ever need within your reach, life takes on a new dimension. Unique Emporia is the dream destination that makes your everyday living, luxuriously comfortable. Each element here, counts to the endless chain of moments, you will cherish for the whole lifetime. Each dawn here, knocks the door with a new surprise and the dusk leaves the footprints of a new colour to dream of, in the night to come. With an offering of brilliantly crafted 3-4 BHK apartments, Unique Builders have yet again seasoned the flavours for an elite taste.





Introducing

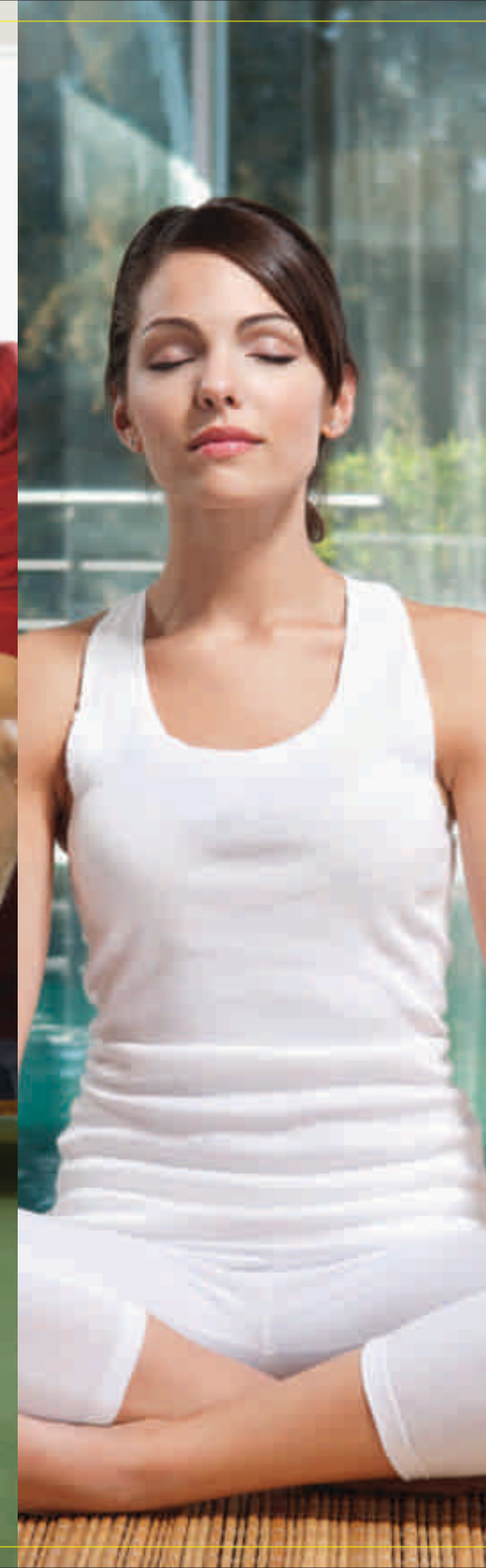
sands

YOUR WORLD OF SOLACE

Sands by Unique Builders - a clubhouse that never leaves you with a desire for anything else. With it, now choosing from the vivid varieties of facilities and amenities is no longer a dream. Space, lifestyle, leisure, recreation, meditation, nature; anything and everything that you need and crave for is never too far, now.



- ~ Grand entrance
- ~ Security cabin
- ~ Plot surrounded by roads
- ~ Kids' play area
- ~ Swimming pool with landscape sit-outs
- ~ Jogging track
- ~ Tennis court
- ~ Basketball court
- ~ Amphitheatre
- ~ Water body with sculpture
- ~ Water cascade
- ~ Trellis
- ~ Party lawn
- ~ Nooks & corners for sitting
- ~ Steam, Sauna & Jacuzzi
- ~ Card, Carrom, Chess room
- ~ Gymnasium
- ~ Library
- ~ Yoga & Meditation room
- ~ Pool table
- ~ Mini theatre
- ~ Children's pool
- ~ Paved plaza
- ~ Palm avenue
- ~ Table tennis
- ~ Business centre with Internet





RADIANCE MUCH FINER THAN THE FINEST

- The Towers:** Elegant and spacious entrance lobby
2 lifts in each block
CCTV surveillance for lobby
Letter Boxes
Fire fighting system
- General:** Marble /Vitrified flooring
Finishing of walls using premium distemper paint with smooth POP base
Wooden windows
- Kitchen:** Granite platform with stainless steel sink
2ft glazes tiles with dado above platform
Kitchen fittings of ISI make
- Toilet:** Bath fittings from indigenous good brands
All good quality sanitary fittings
7ft high designer dado tiles in all bathrooms with anti-skid flooring
- Electricals:** Concealed copper wiring
Adequate points with modular switches
Children friendly electrical connections
- Ambience:** Naturally lighted and ventilated rooms
Water bodies /fountains
Breathtaking view of landscape area from all units
- Security:** Surrounded by 6ft high compound walls
Centralized control room manned by well trained security personnel
Entry to residents block only after proper authorisation
Visitors entry only after issuance of visitors card maintained by the society
Beautiful landscaping
Specific visitor parking and basement parking for residents



Artistic impression of the project



Artistic impression of kids' play area (Basketball Court View)



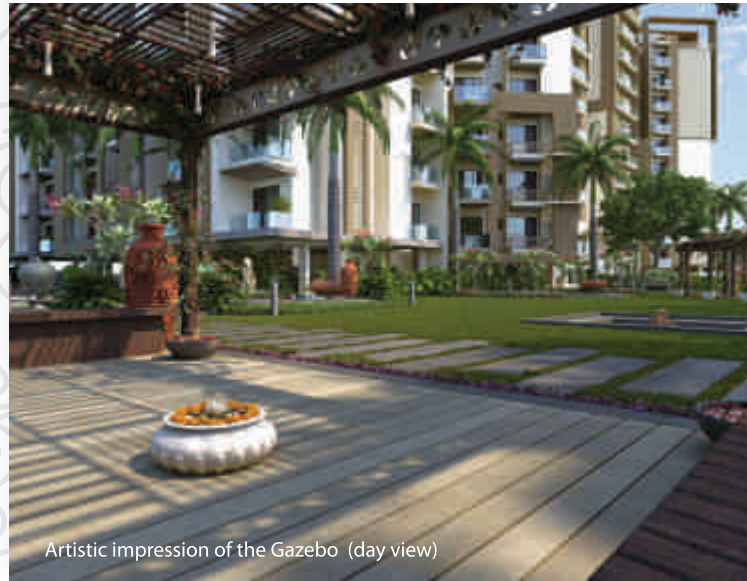
Artistic impression of the water bodies



Artistic impression of the water bodies



Artistic impression of kids' play area



Artistic impression of the Gazebo (day view)



Artistic impression of the project (front view)



Artistic impression of the Gazebo (night view)

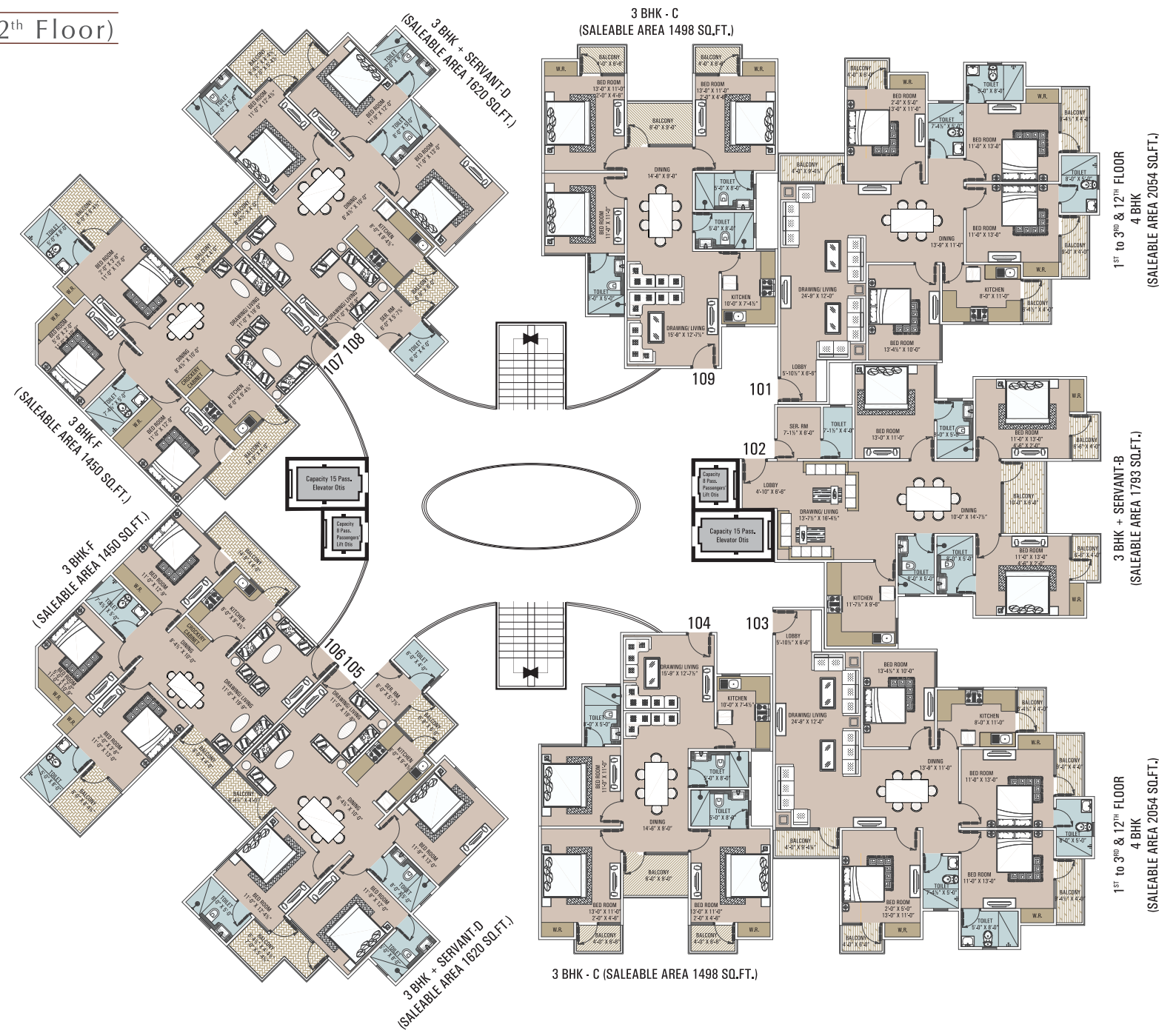
SITE PLAN

LEGENDS

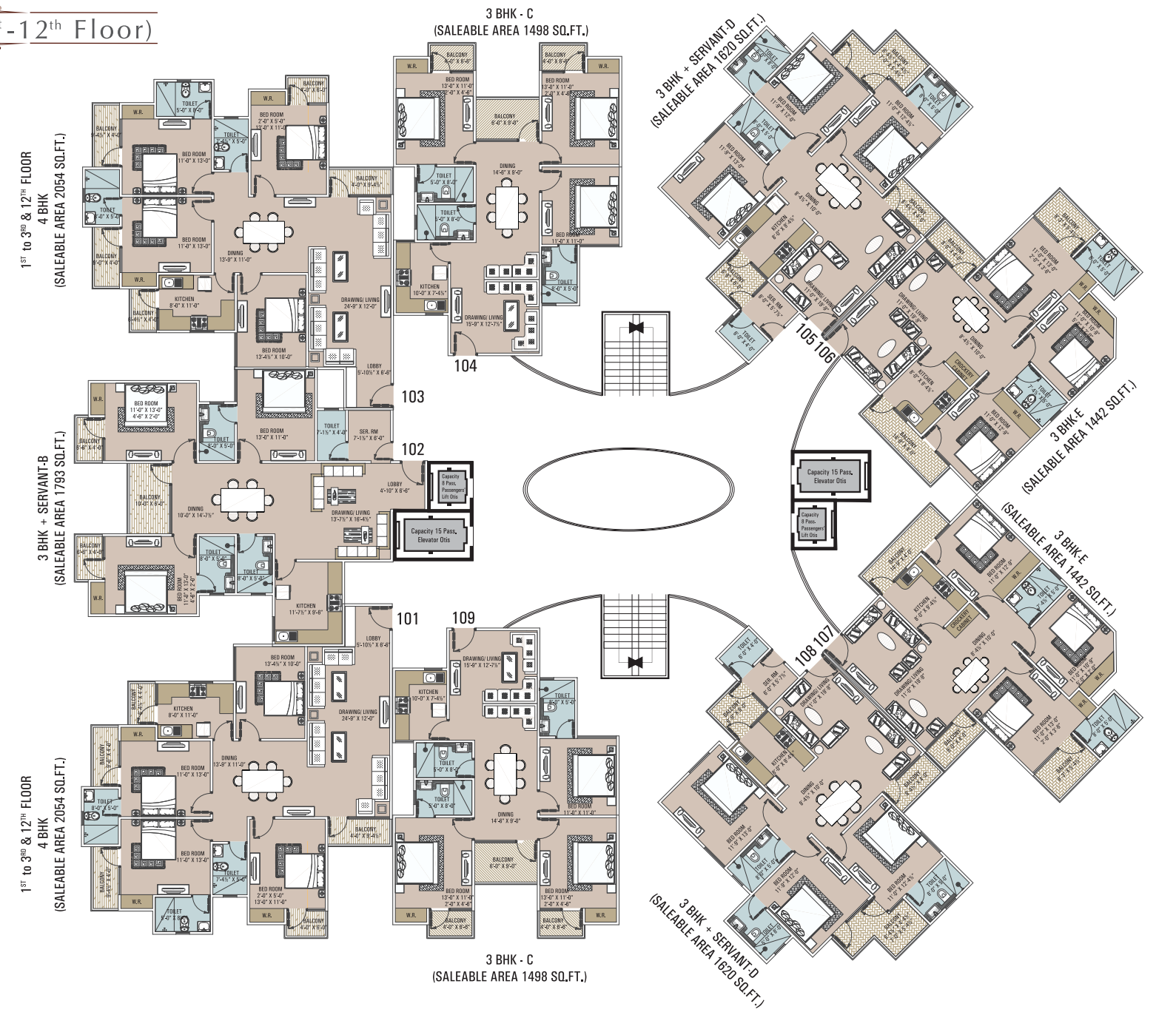
- 1 ENTRANCE
- 2 WATER BODY WITH SCULPTURE
- 3 BASKETBALL COURT
- 4 KIDS' SKATING AREA
- 5 GARDEN
- 6 AMPHITHEATRE
- 7 JOGGING TRACK
- 8 KIDS' PLAY AREA
- 9 PARTY LAWN
- 10 SWIMMING POOL
- 11 LANDSCAPE SIT-OUT
- 12 POOL DECK
- 13 TENNIS COURT
- 14 TRELLIS
- 15 PARKING
- 16 WATER CASCADE
- 17 EXIT
- 18 CLUB HOUSE



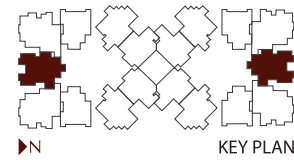
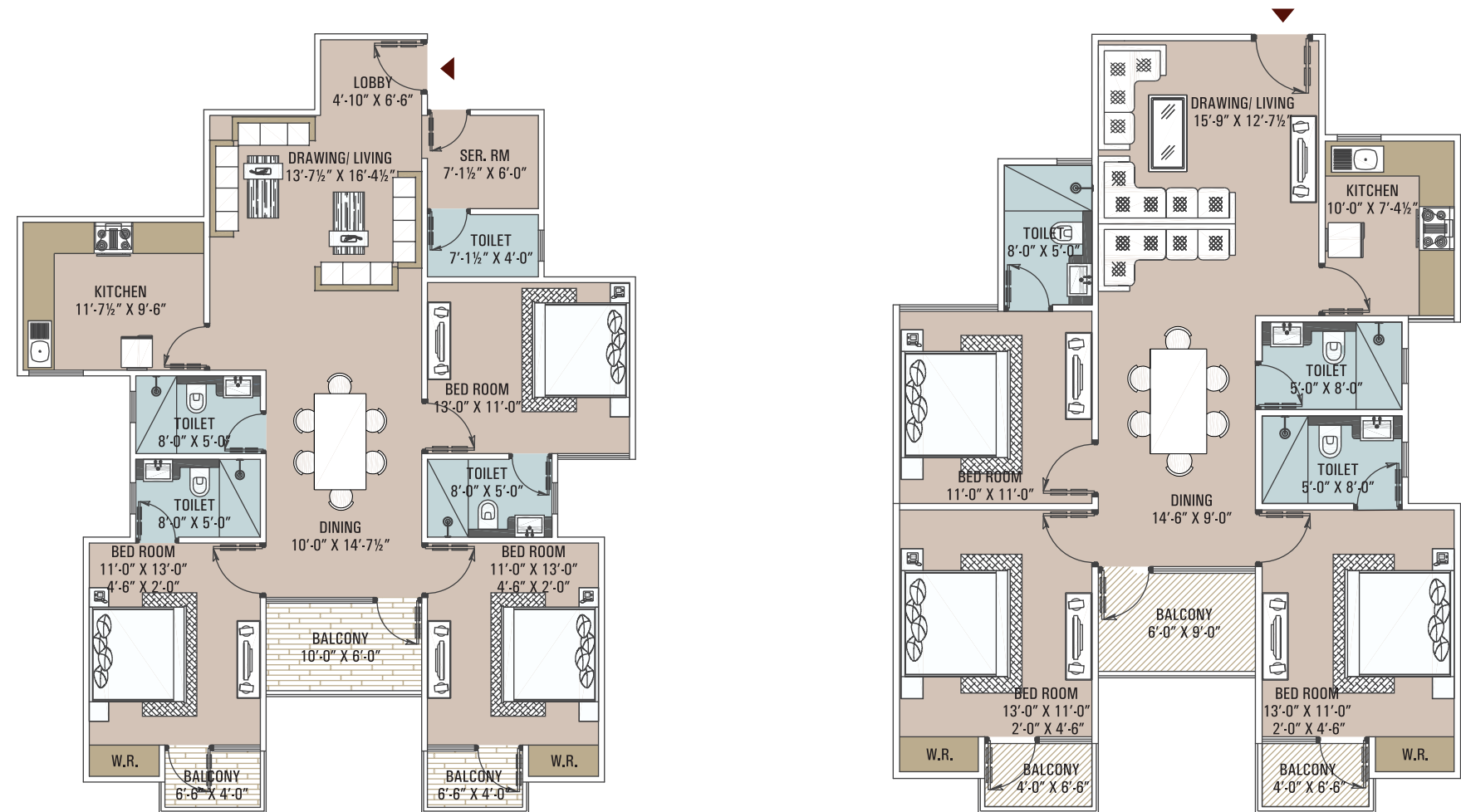
BLOCK-A (1st-12th Floor)



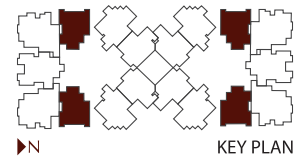
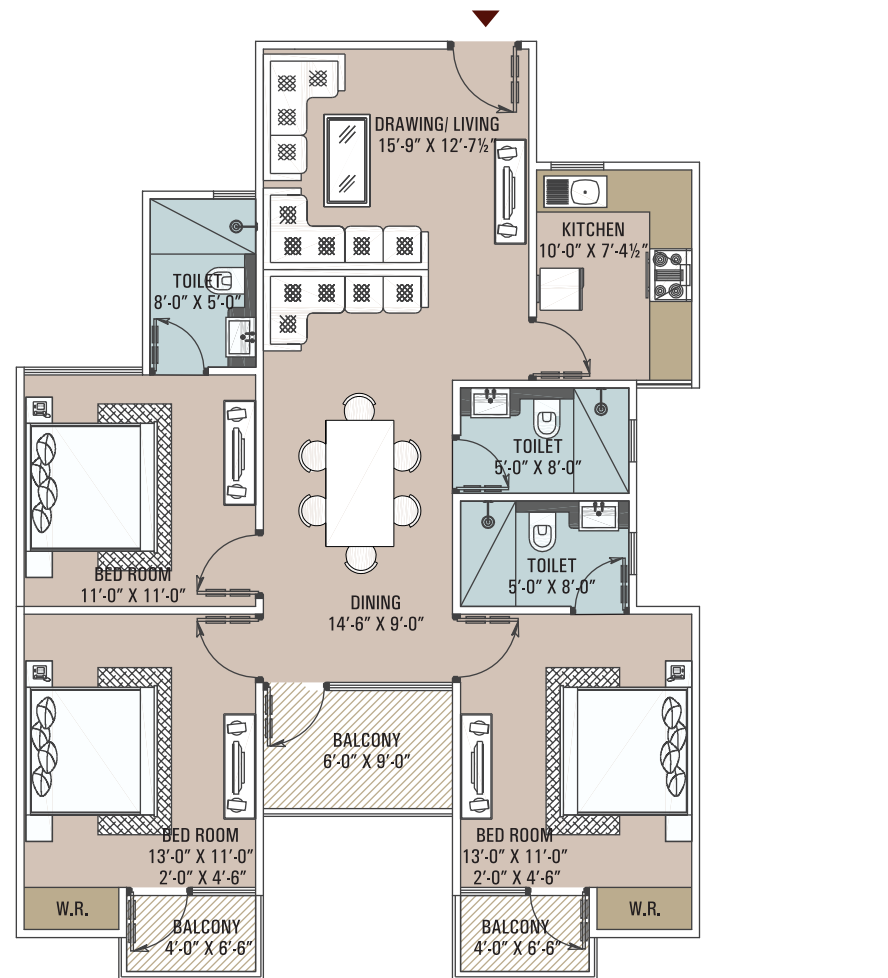
BLOCK-B (1st-12th Floor)



UNIT PLANS

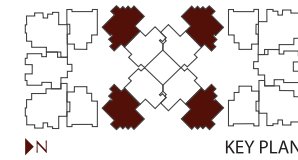
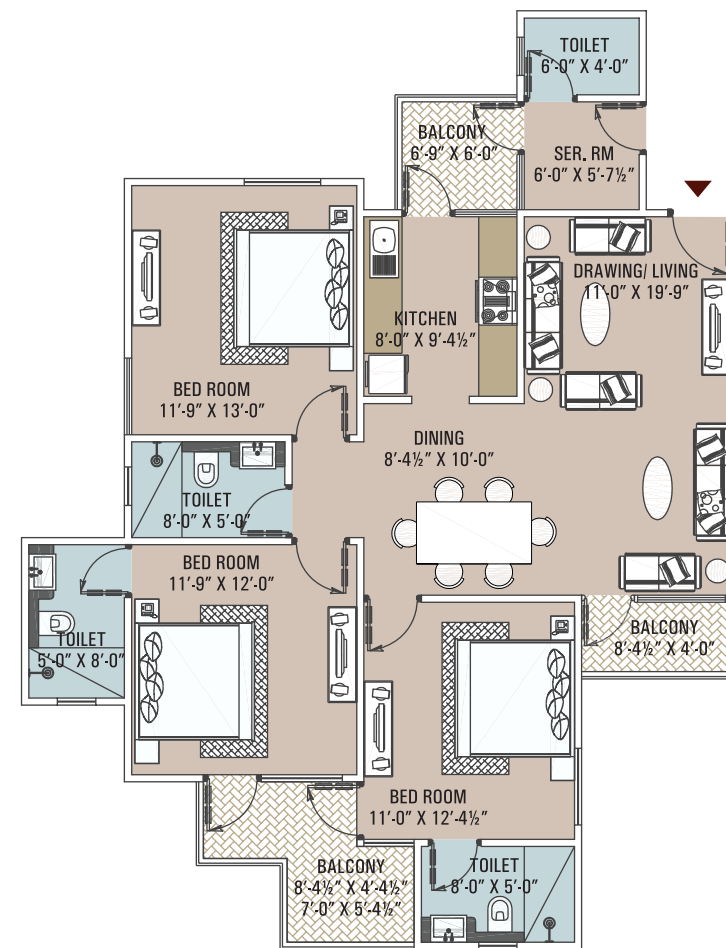


3 BHK + SERVANT - B (SALEABLE AREA 1793 SQ.FT.)

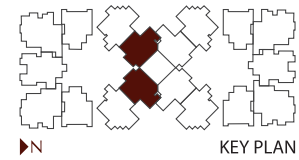
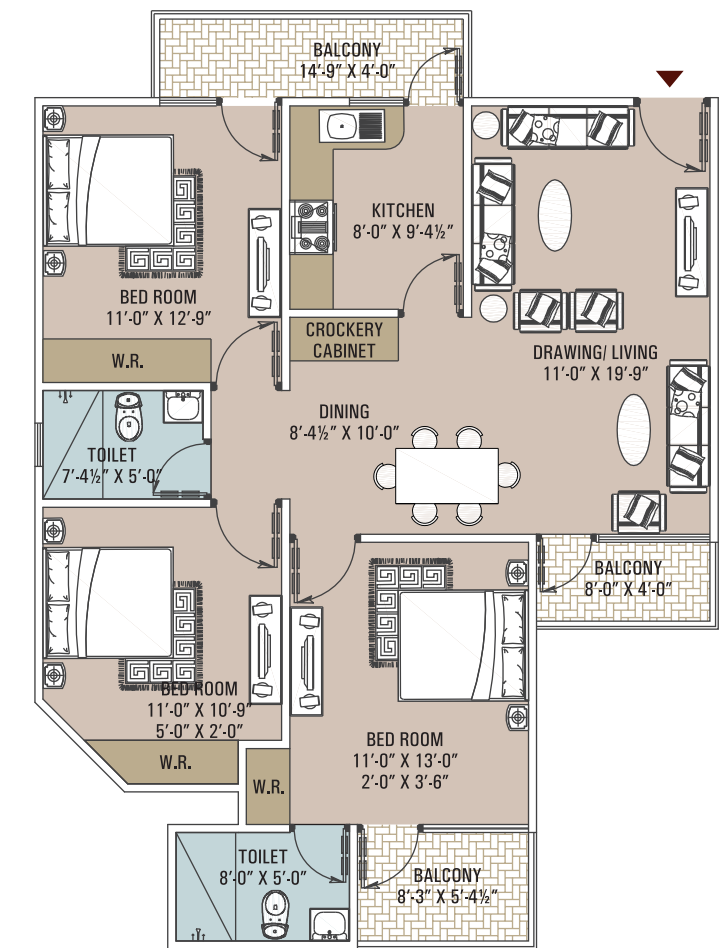


3 BHK - C (SALEABLE AREA 1498 SQ.FT.)

UNIT PLANS

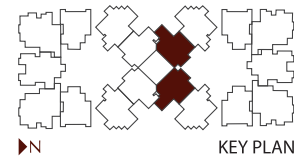
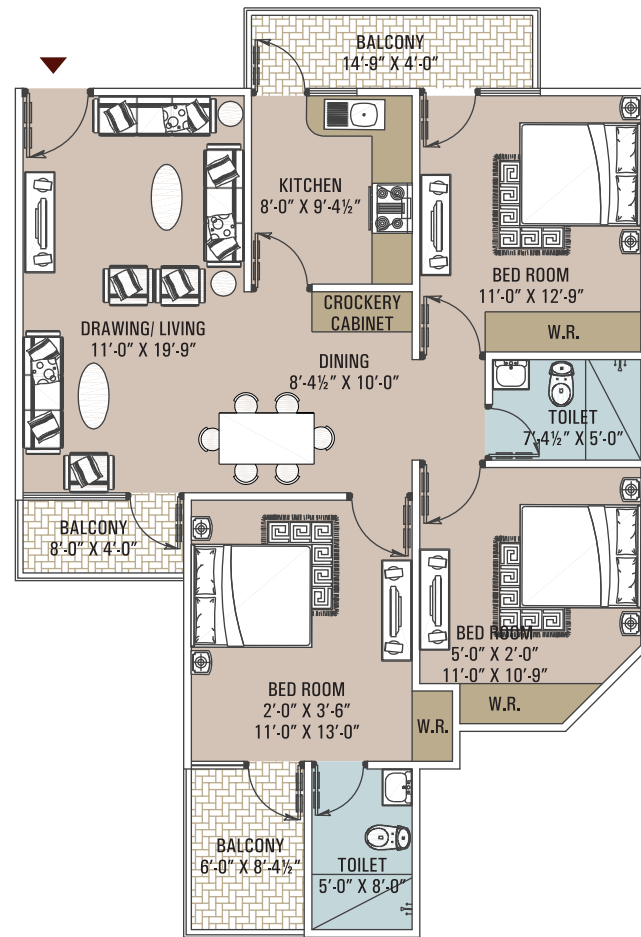


3 BHK + SERVANT - D (SALEABLE AREA 1620 SQ.FT.)

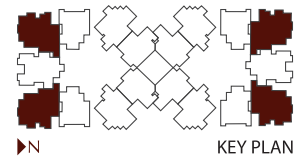
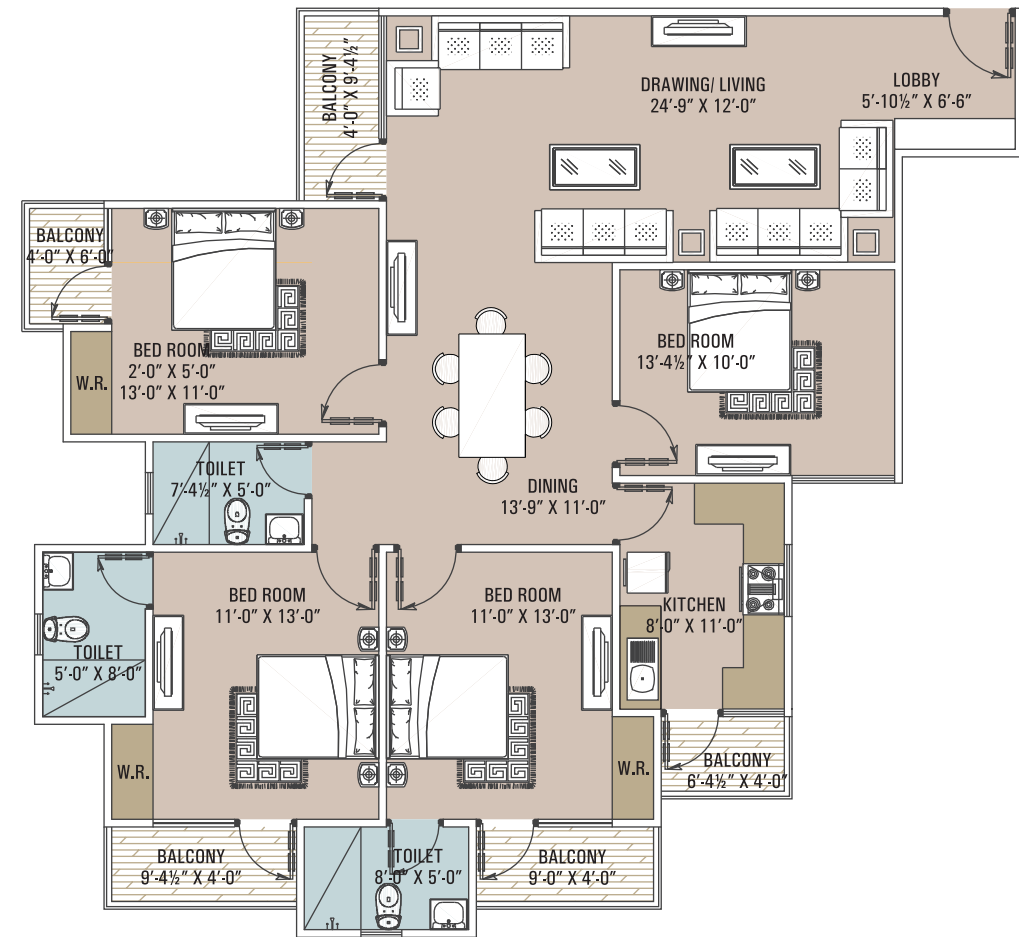


3 BHK-E (SALEABLE AREA 1442 SQ.FT.)

UNIT PLANS

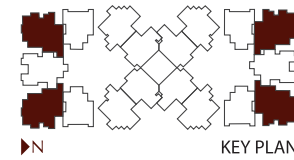
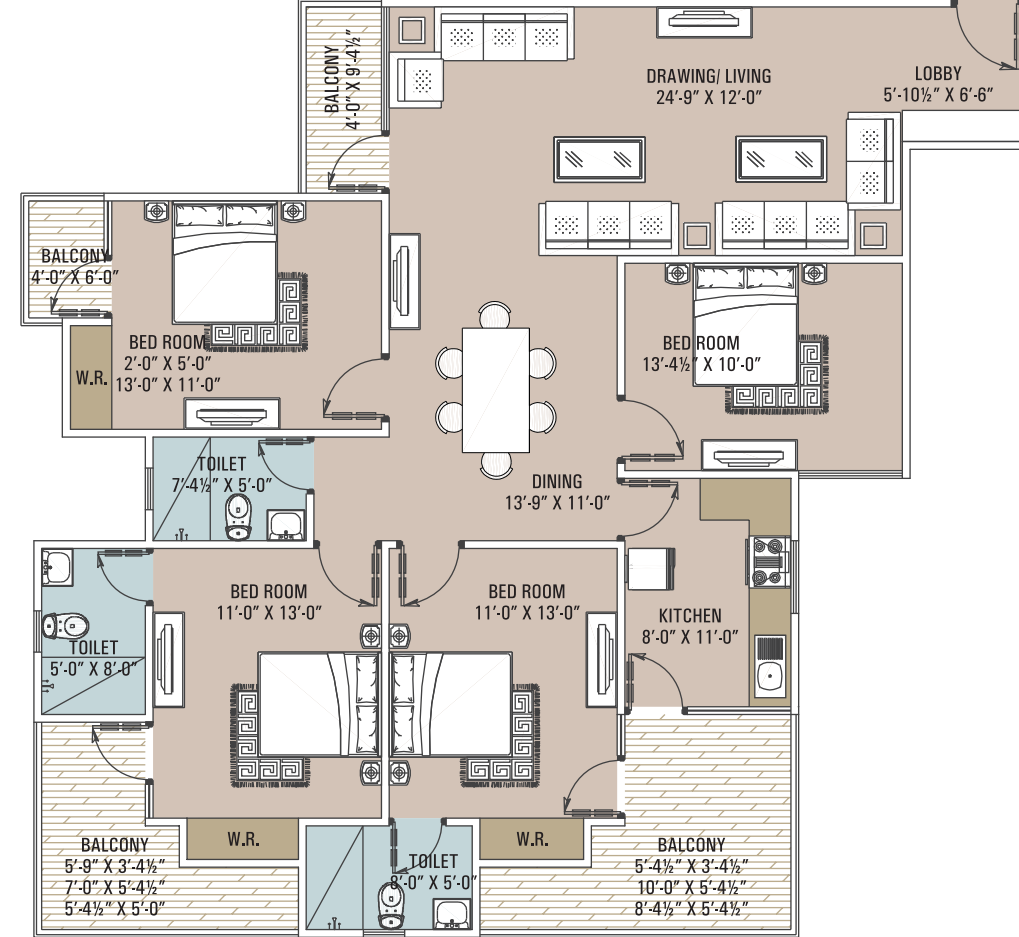


3 BHK - F (SALEABLE AREA 1450 SQ.FT.)

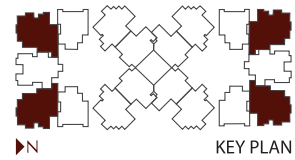
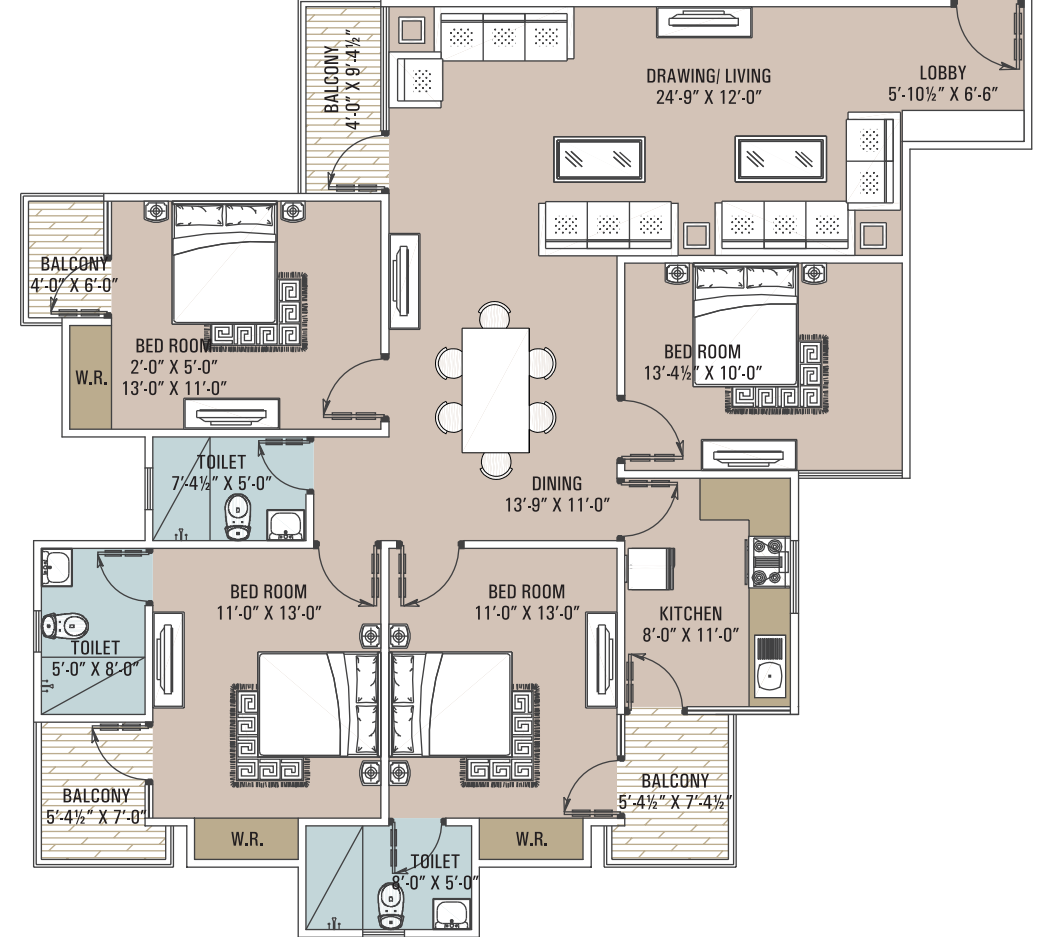


1ST to 3RD & 12TH FLOOR 4 BHK (SALEABLE AREA 2054 SQ.FT.)

UNIT PLANS

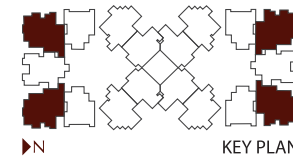
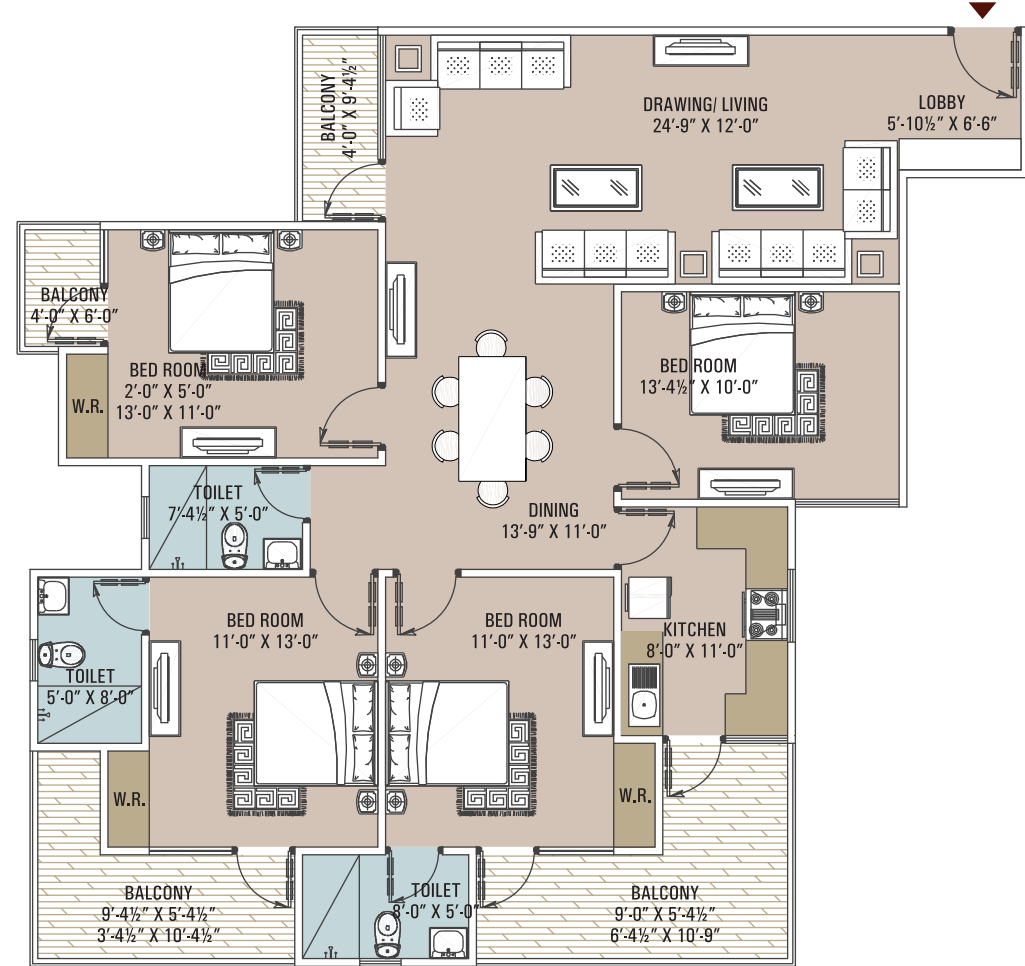


4TH FLOOR 4 BHK (SALEABLE AREA 2188 SQ.FT.)



5TH to 10TH FLOOR 4 BHK (SALEABLE AREA 2033 SQ.FT.)

UNIT PLANS



11TH FLOOR 4 BHK (SALEABLE AREA 2188 SQ.FT.)



MANNAT

WE BUILD FOR EVERYONE

Your home – be it a pleasure of 5 lakhs or a 2 crores' delight;
we shape up the same smile for different faces,
different dreams and different desires.



unique builders

Jaipur | Kishangarh | Ajmer | Bhilwara | Jodhpur | Udaipur | Khatushyam Ji | Bikaner | Barmer | Mumbai

