



“PRIMROSE FLOORS”
At
Vatika India Next, Gurgaon

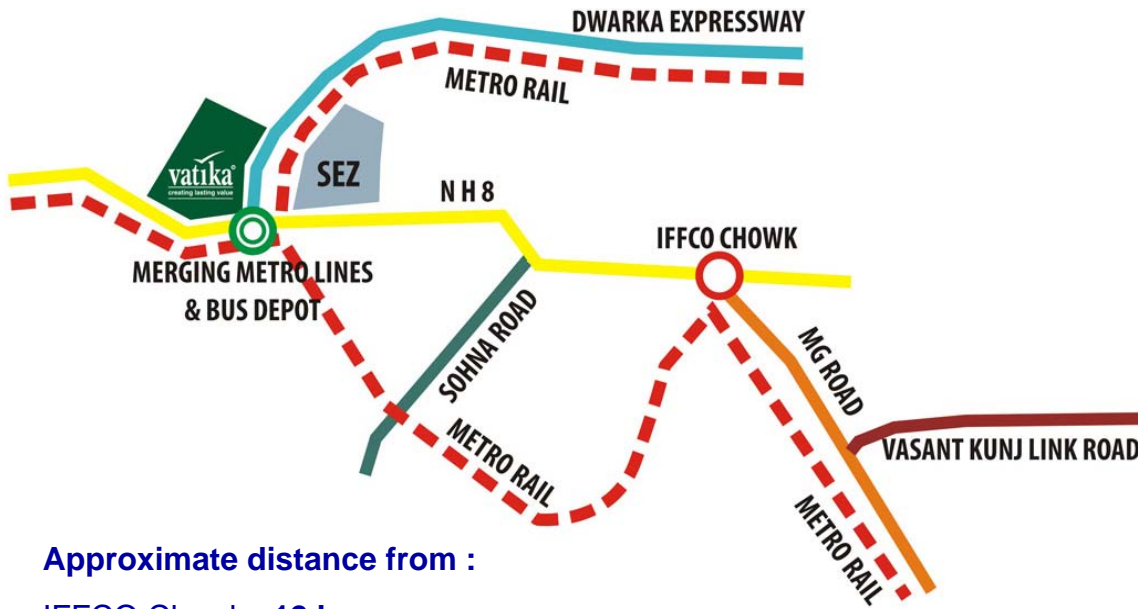
INDICATIVE DEVELOPMENT CONCEPT



primrose
floors
EXCLUSIVE FLOORS BY VATIKA



**Urban Woods, independent floors on 360 sq.yrds at Vatika Infotech City, Jaipur .*



Approximate distance from :

- IFFCO Chowk : **12 kms**
- International Airport : **25 kms**
- Rajiv Chowk : **6 kms**
- Haldiram's : **1 km**
- Vatika Triangle : **13 kms**
- Vatika City, Sohna Road : **10 kms**
- DLF Phase 1 : **14 kms**

India Next will be life beyond your imagination, where living will be more comfortable and approachable due to its strategic location and world class infrastructure.

A mega " Future Ready" integrated township project. Strategically located on the intersection of two 8 lane expressway's - the NH8, and the new proposed one connecting to North West Delhi Walking distance from proposed metro hub at the intersection of South Delhi- Gurgaon metro line and the Dwarka metro line Proposed ISBT project coming up in close vicinity. Spread through the prime sectors 82, 82A, 83, 84, 85.



**Master Plan
Vatika India Next, Gurgaon**



**Site for PRIMROSE Floors,
Sector 82,
Vatika India Next**

primrose
floors

EXCLUSIVE FLOORS BY VATIKA



**“PRIMROSE FLOORS”
At
Vatika India Next**

primrose
floors
EXCLUSIVE FLOORS BY VATIKA

THE CONCEPT

Low rise row-housing.

Ground + 2 Structure on 240 Sq.yds plot.

Ground floor gets individual front & back garden with covered verandas.

1st & 2nd floor gets large balconies & terraces.

Reserved parking slot for each floor.

Provision for power backup (Inverter wiring for all electric/power points to be done by the developers).

primrose
floors
EXCLUSIVE FLOORS BY VATIKA

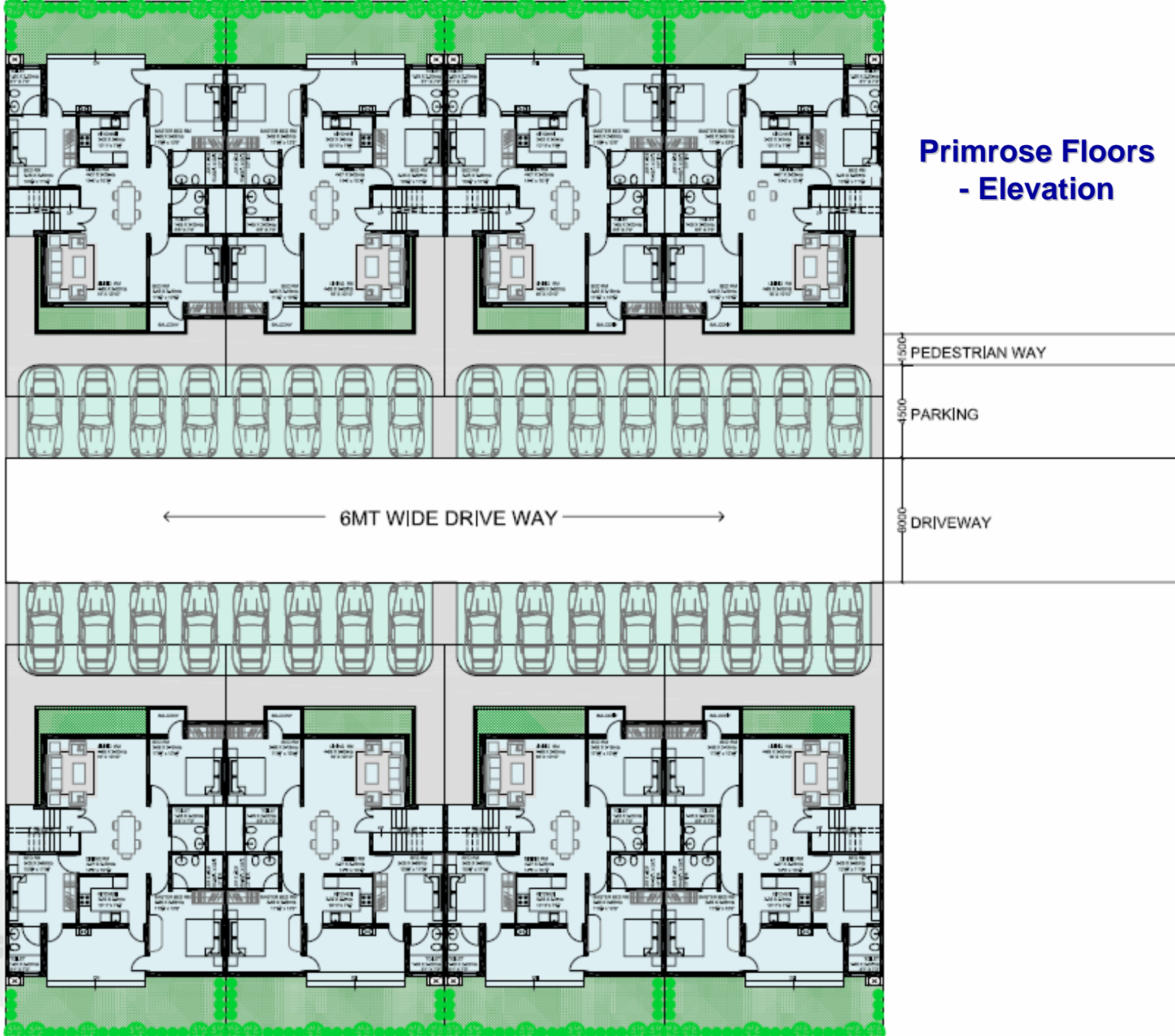
Floor Plans & Specifications

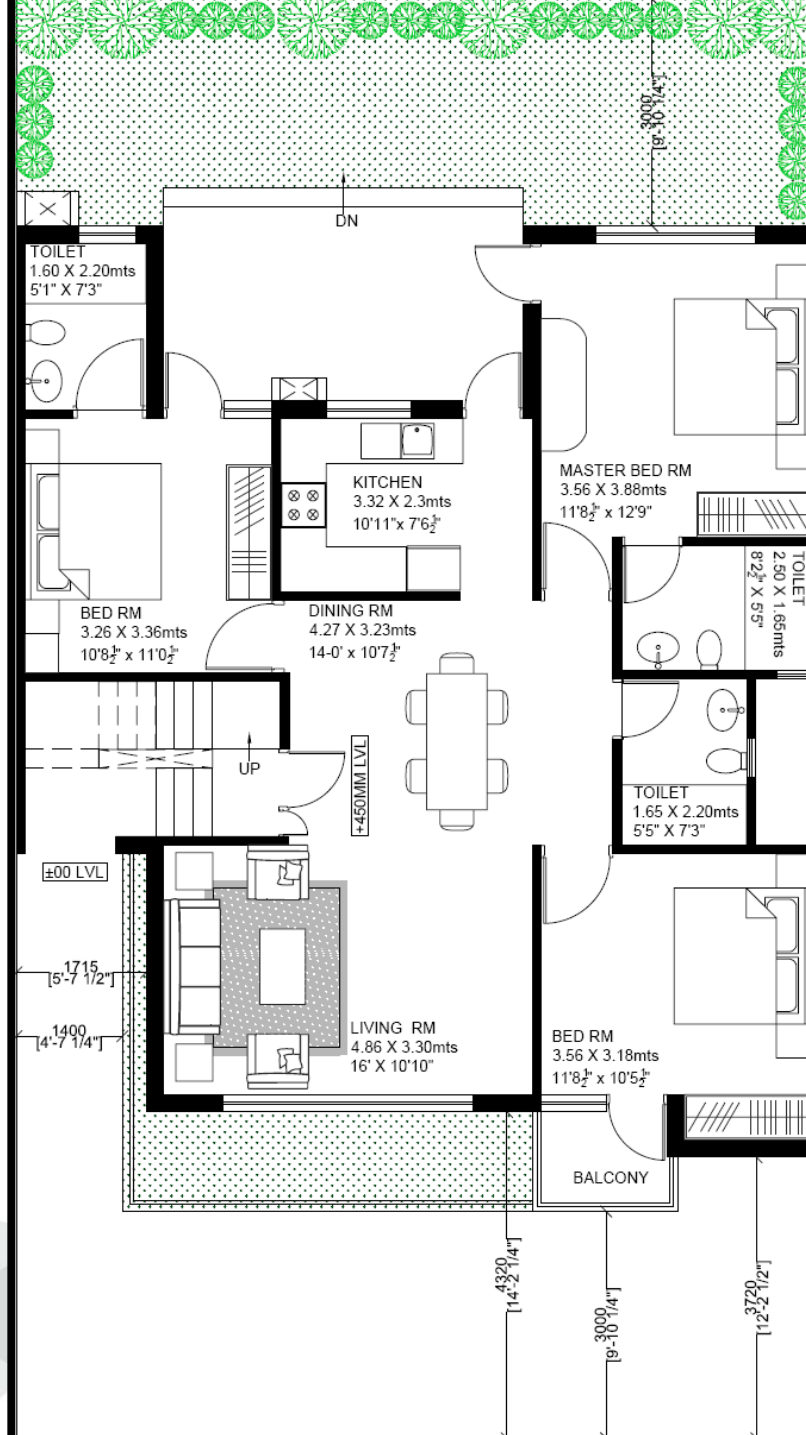


primrose
floors

EXCLUSIVE FLOORS BY VATIKA

Primrose Floors - Elevation



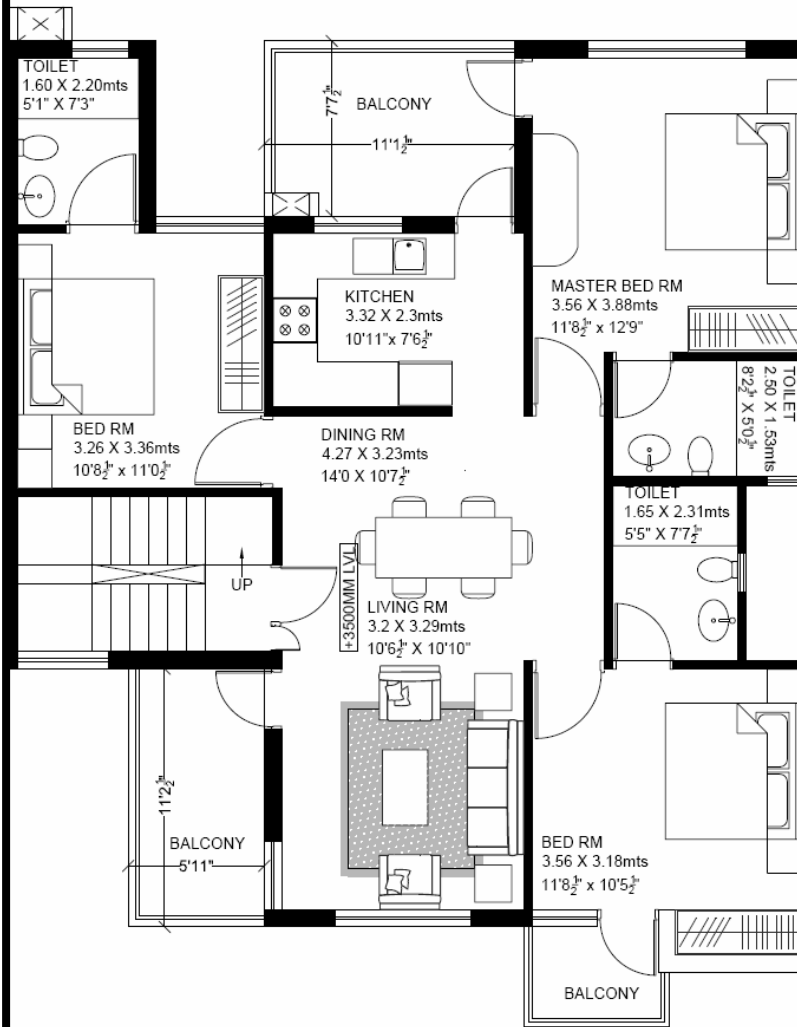


Ground Floor Plan

Built-Up Area : 1156.21 sq.ft.
Equivalent Super Area : 1616.61 sq.ft.



First Floor Plan

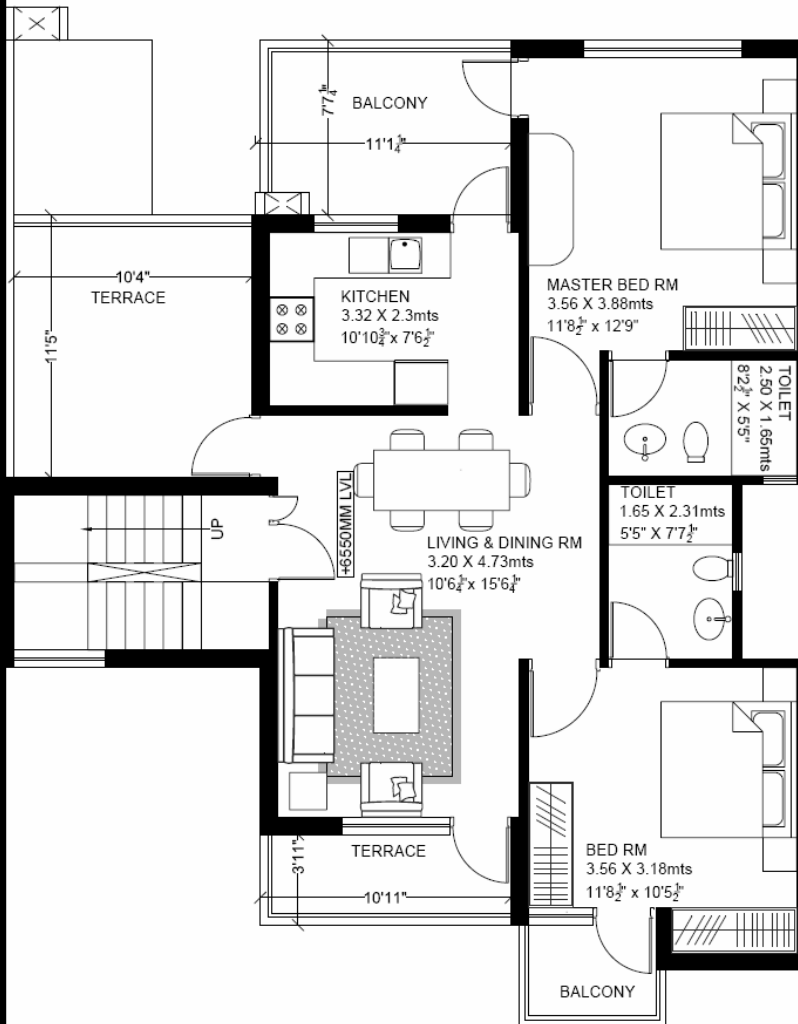


Built-Up Area : 1094.21 sq.ft

Equivalent Super Area : 1533.95 sq.ft.

primrose
floors

EXCLUSIVE FLOORS BY VATIKA



Second Floor Plan

Built-Up Area : 881.41 sq.ft

Equivalent Super Area : 1225.21 sq.ft.



Specifications

Living / Dining / Bedrooms: Vitrified tiles flooring, OBD.

Toilets: Anti-skid ceramic tiles, Branded sanitary fittings and fixtures, Pattern glazed tiles on walls.

Kitchen: Granite counter, stainless steel sink, ceramic tiles on the wall over counter.

Electrical: Complete electrical wiring with branded sockets & switches.

Doors & Windows: Flush doors with wooden frame, Window panes with glazed aluminum/ durable wood.

Provision for Inverter : Inverter wiring for all electric/power points to be done by the developer.



primrose
floors
EXCLUSIVE FLOORS BY VATIKA