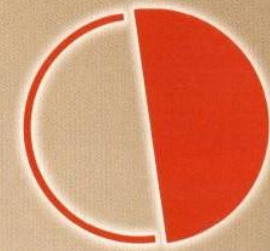




AN ISO 9001 : 2008 CERTIFIED COMPANY

Developing Landmarks

Skytech Group



Colours Delight
— building dreams — **Group**

Colours
AVENUE
Greater Noida (west)
Noida Extension



THE SITE



Super Area

- 2 Bed + 2 Toilet 870 sq.ft.
- 2 Bed + 2 Toilet 1020 sq.ft.
- 3 Bed + 2 Toilet 1160 sq.ft.
- 3 Bed + 2 Toilet 1240 sq.ft.
- 3 Bed + 3 Toilet 1350 sq.ft.
- Commercial

LEGEND

- MAIN ENTRANCE / EXIT
- PARKING
- PLAZA
- CENTRAL GREEN
- PAVED WALKWAY PATH
- CLUB HOUSE / GYM
- BADMINTON / BASKETBALL COURT
- PLAY AREA
- SWIMMING POOL

The features, plans and specifications described above are proposed only, and the developer reserves the right to modify, revise or withdraw any or all of the same in its sole discretion and without prior notice. Without limiting the generality of the foregoing, developer reserves the right to substitute any of the foregoing with items or similar or better value, in developer's sole opinion.

FLOOR PLAN

2 Bedroom +
 2 Toilet + ●
 3 Balcony
 Super Area : 870 sq.ft.

2 Bedroom +
 2 Toilet + ●
 3 Balcony
 Super Area : 1020 sq.ft.

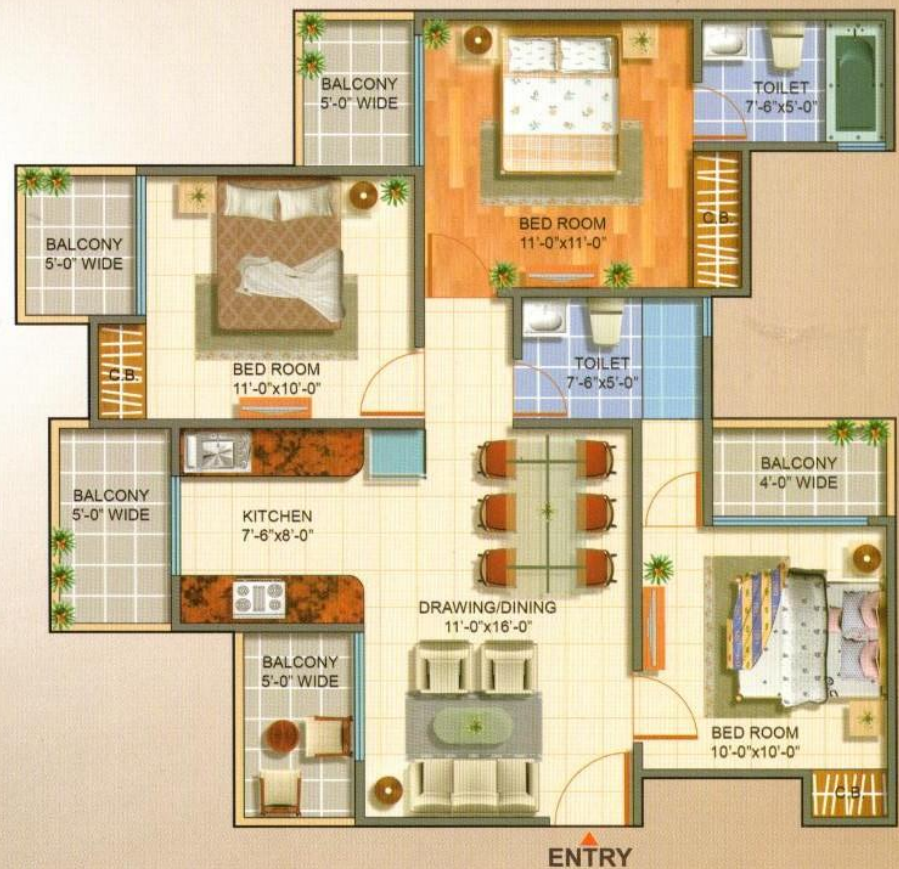


3 Bedroom +
 2 Toilet + ●
 3 Balcony
 Super Area : 1160 sq.ft.




FLOOR PLAN

3 Bedroom +
 2 Toilet + ●
 5 Balcony
 Super Area : 1240 sq.ft.



3 Bedroom +

3 Toilet + 

4 Balcony

Super Area : 1350 sq.ft.



Specifications

Structure :

Earthquake resistance, R.C.C. frame structure designed by IIT engrs., (as per IS codes.)

Flooring :

Vitrified tiles in drawing, dining & bedrooms.
Antiskid ceramic tiles in toilets & balconies.

Interior Wall Finish :

Oil bound distemper with pleasing shades on the apartment walls.

P.O.P. :

P.O.P. in drawing, dining and bedrooms.

Dado :

Glazed / Ceramic tiles upto 7 feet in the toilets in different colours.

Exterior :

Permanent Finish

Kitchen :

Slabs are of well-finished stone with stainless steel sink.

Doors and Windows :

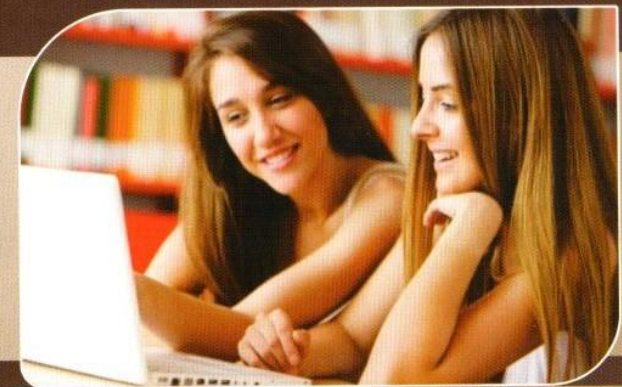
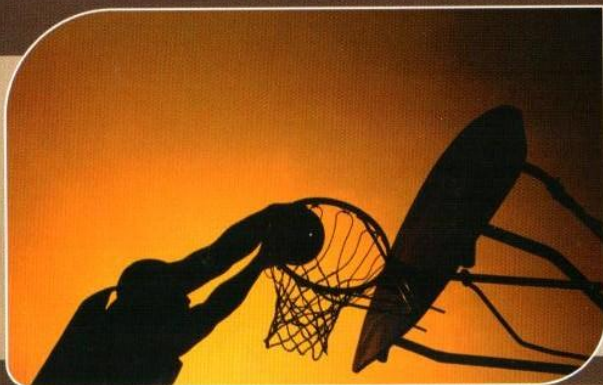
Flush door / Aluminium powder coated / UPVC/ Flush door and window in exterior.

Bathrooms :

Equipped with ISI standard washbasins and WCs in various shades. Chrome plated tap fittings of standard make.

Electrical :

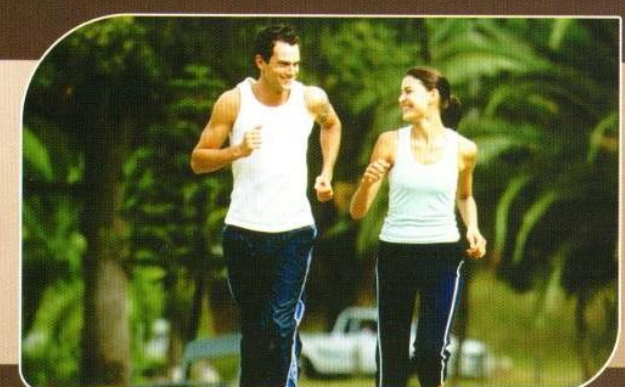
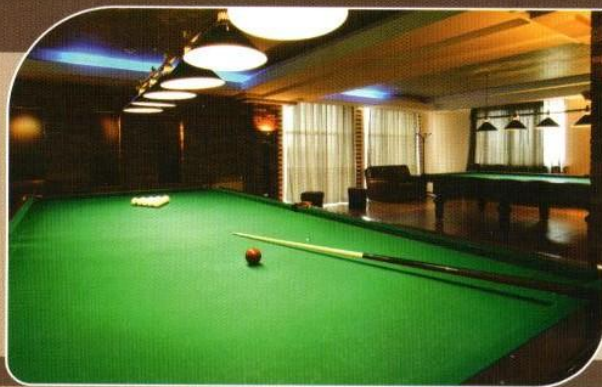
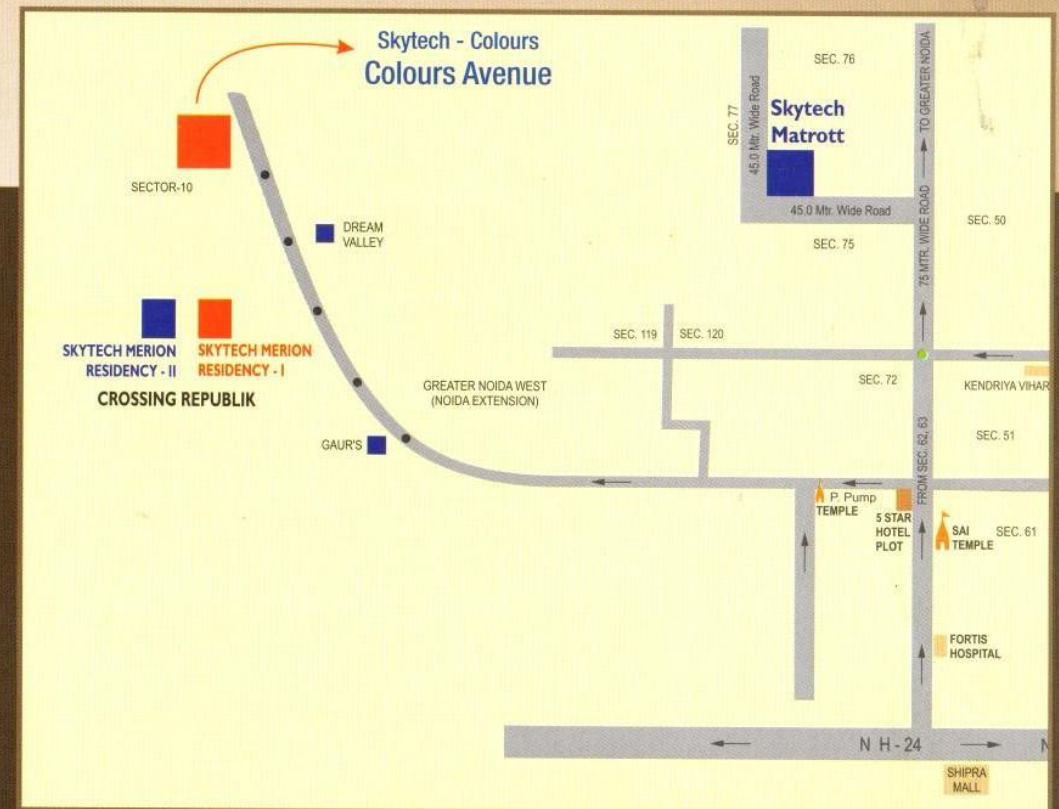
Electrical (copper) wiring as per IS code with modular switches. Circuits with MCBs of approved make.



The Location

Locational Advantages

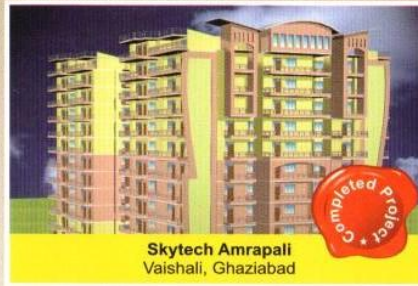
- 5 km from Noida
- 5 min Drive from Aster Public School
- 10 min Drive from Noida City Centre
- 10 min Drive from Sai Mandir
- 15 min Drive from Fortis Hospital
- 1 KM from Railway Station
- 10 min Drive from Yamuna Express Way
- 20 min Drive from Sector 18 Market
- 25 min Drive from DND Flyover



OTHER PROJECTS



Skytech Mall
Sector-3, Rohtak



Skytech Amrapali
Vaishali, Ghaziabad



Skytech Magadh
Vaishali, Ghaziabad



Skytech Merion Residency - I
Crossing Rebulik - N.H.-24



Skytech Merion Residency - II
Crossing Rebulik - N.H.-24



Skytech Matrott
Sector-76, Noida



Office : C-60, Sector-63, Noida. | E-53, Sector-63, Noida.
Site Office : GH01/C, Sector-10, Greater Noida West (Noida Extension)

Ph. : 0120-4212515/16, 4566681/82

Mob. : 9311190052, 9311180044, 9311190063, 9311180051, 9311190082, 9311190059

E-mail : mkt@skytechgroup.in | contact@coloursdelight.com

Website : www.skytechgroup.in | www.coloursdelight.com

The features, plans and specifications described above are proposed only, and the developer reserves the right to modify, revise or withdraw any or all of the same in its sole discretion and without prior notice.
Without limiting the generality of the foregoing, developer reserves the right to substitute any of the foregoing with items or similar or better value, in developer's sole opinion.