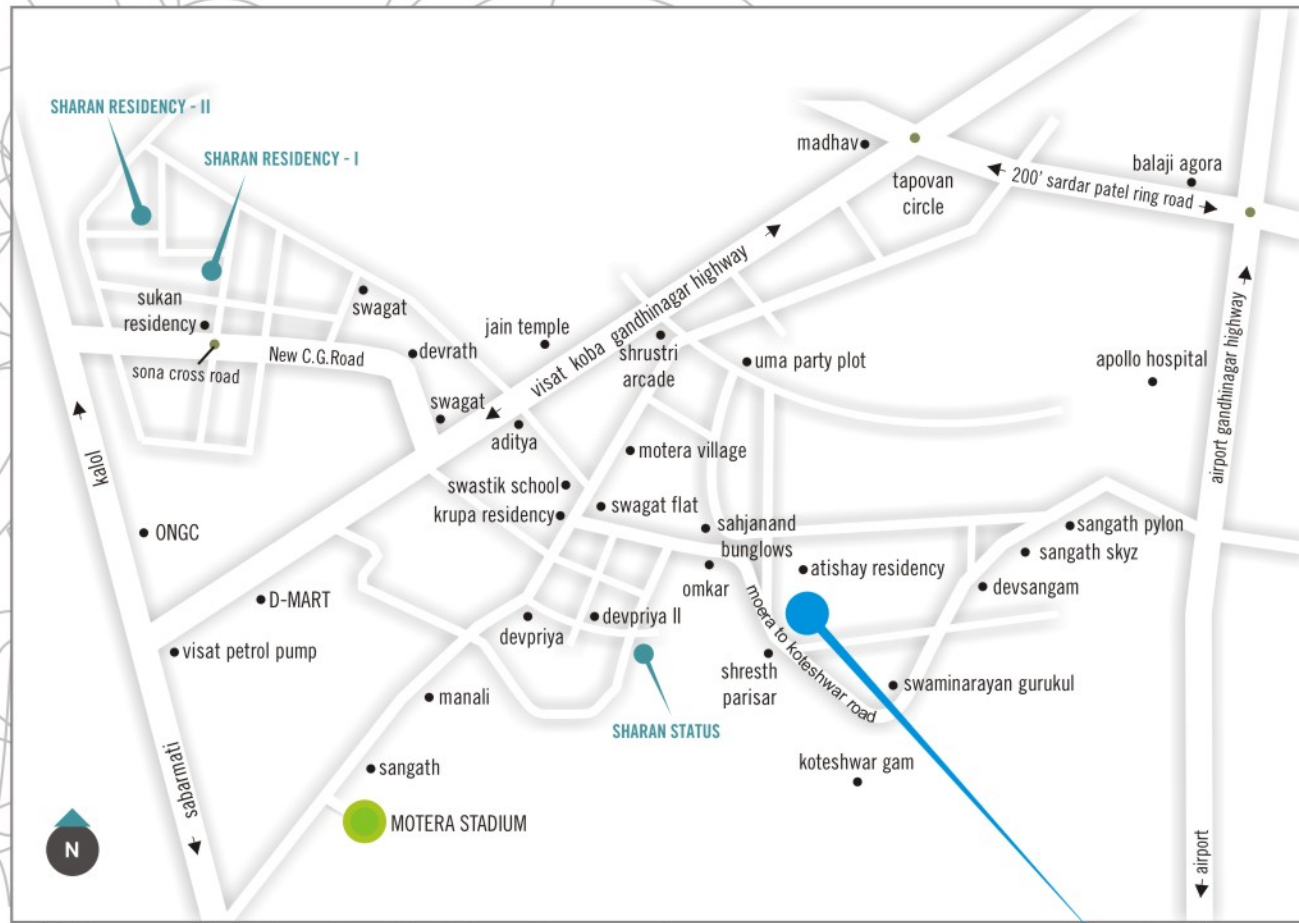


KEY PLAN



SHARAN SAPPHIRE

redefining skyline living...

RUSHABHDEV
Infrastructure
Built On Trust...

Sharan Sapphire, Motera Koteswar Road Motera. Ahmedabad

M : 99781 11119 | 99791 11116 | 98250 05458

E-mail: info@rushabhdevinfrastructure.com

www.rushabhdevinfrastructure.com

2 & 3 BHK high life apartments



SHARAN SAPPHIRE
redefining skyline living...

2 & 3 BHK high life apartments

Across the horizon, the glittering skyline fascinates us all to be a part of that glamour. But, there are only a handful of lives in the skyline which, in true sense, is as rich and glamorous from the interior as it seems to be from the distance. Touching the clear blue sky of the city with a glittering elegance that is exhibited through its offerings, Sharan Sapphire is eyeing to redefine skyline living.

r e d e f i n i n g s k y l i n e l i v i n g . . .



SHARAN SAPPHIRE
redefining skyline living...

DESIGNER OF CELESTIAL LIFESTYLE

ABOUT SHARAN

Pursuing its corporate philosophy of bestowing the city with landmark addresses that are blissfully elegant, "Rushabhdev Infrastructure" has mastered the art of creating exquisite properties that blends the comfort of luxury with the pristine beauty of the nature. A decade after its inception, Rushabhdev today stands as one of the most esteemed names in the Real Estate development sector of Ahmedabad.

ADORNING SKYLINE LIVING



- Fully Residential Scheme
- Majestically Designed Entrance
- Designer Foyer
- Water Body
- Children Play Area
- Children Drop Zone
- Reading Room
- D.T.H System
- Tennis Court / Multi-purpose Court
- Badminton Court
- Senior Citizen Sit Outs
- Automatic Elevators
- Gymnasium & Health Club
- Party Lawn
- Open Air theater

S
E
T
I
N
Z
E
A
M
E

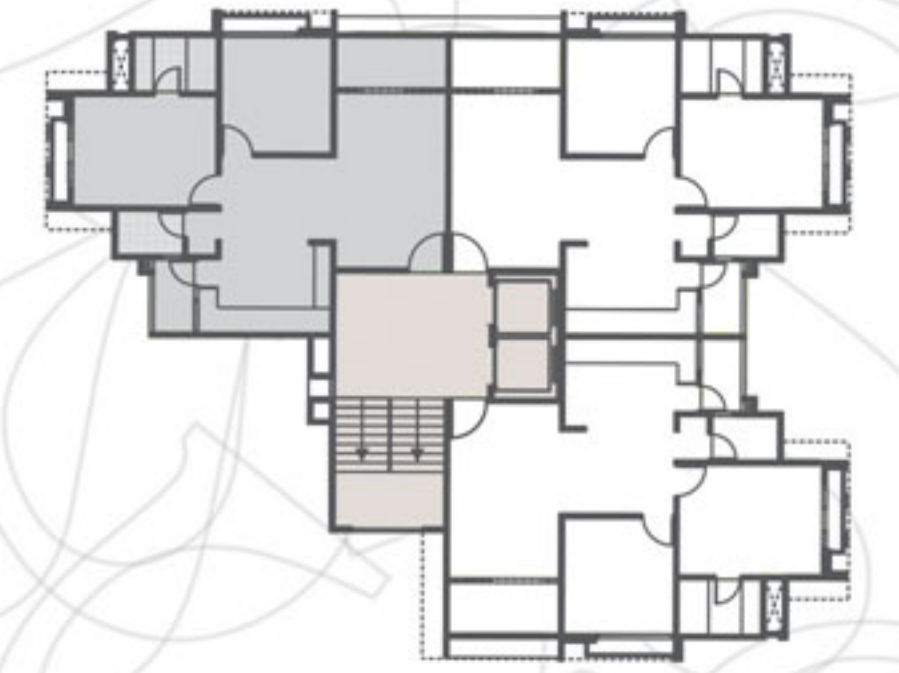
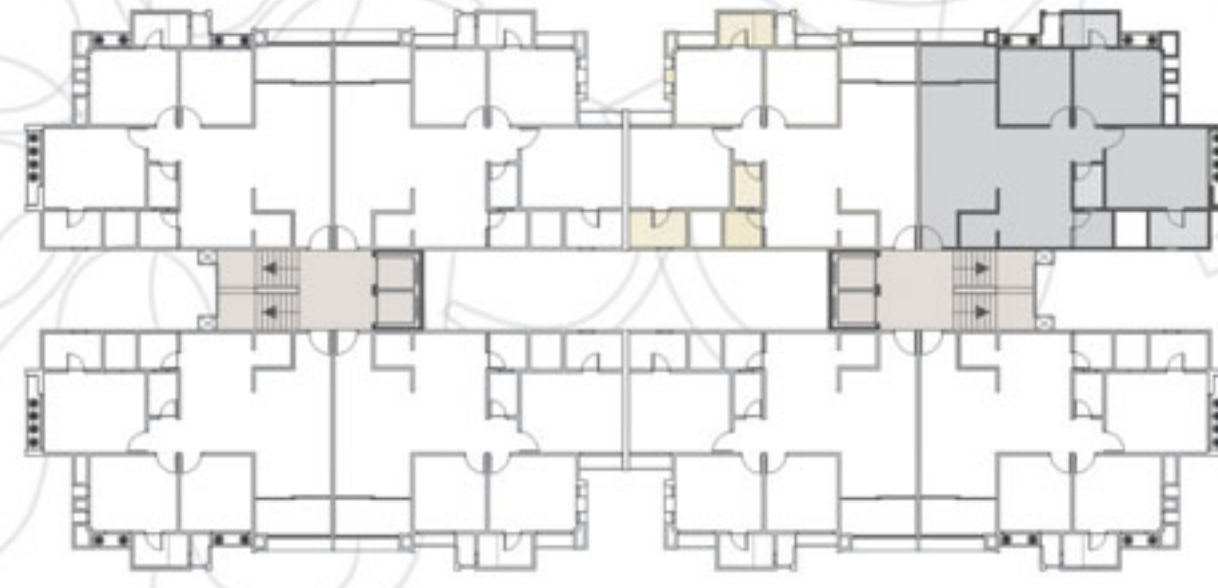
SHARAN SAPPHIRE

redefining skyline living...

Appreciating your dream and the desire of your loved ones, and complimenting to the need of your lifestyle, Sharan Sapphire has in store a wide array of elegant offerings for each of your family members. Right from answering to your lavish hobbies of indulging yourself in clubbing, to designing for the children's aspiration of grand play area, to your family's dream of unwinding in the beauty of the landscaped garden, every amenity at Sapphire will comfort you and your family like you have always wanted it to be.



redefining skyline living...

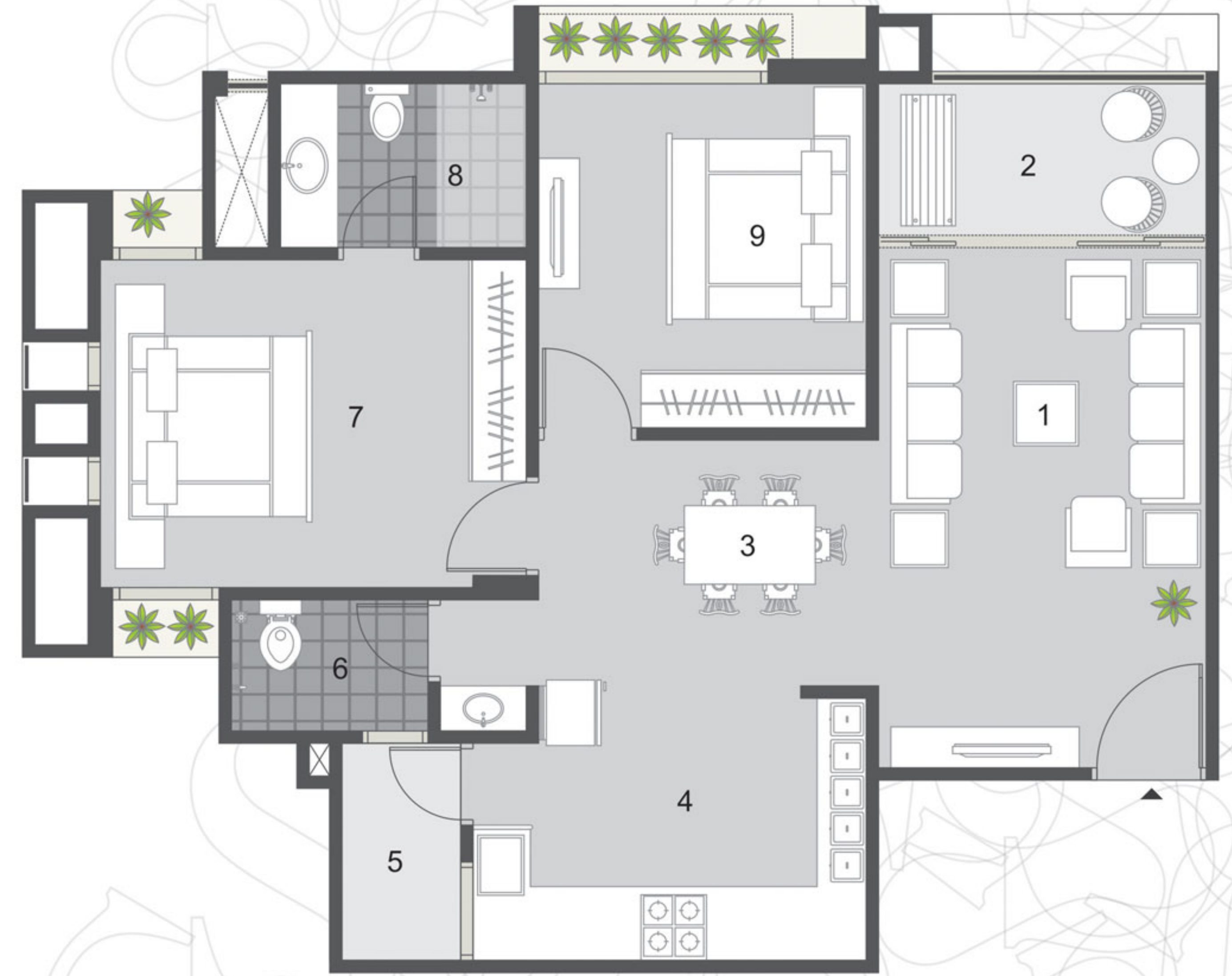


TYPE - A



1 - ENT. - 5'1.5"X5'0"	8 - BED ROOM - 10'0"X10'4½"
2 - DRAWING - 10'6"X17'9"	9 - BED ROOM - 12'0"X10'4½"
3 - VERANDAH - 10'6"X5'6"	10 - TOILET - 7'6"X4'6"
4 - DINING - 10'4½"X8'4½"	11 - BED ROOM - 14'0"X11'0"
5 - KITCHEN - 10'0"X8'0"	12 - TOILET - 8'0"X5'0"
6 - STORE - 5'0"X4'7.5"	13 - A.C. DUCT - 4'6"X5'6"
7 - TOILET - 4'0"X6'0"	14 - WASH - 5'6"X5'7½"

TYPE - B



1 - DRAWING - 10'0"X16'0"	8 - TOILET - 7'6"X5'0"
2 - VERANDAH - 10'0"X5'0"	9 - BED ROOM - 10'0"X10'6"
3 - DINING - 10'4½"X7'6"	
4 - KITCHEN - 12'0"X8'4½"	
5 - WASH - 4'0"X6'7½"	
6 - TOILET - 6'0"X4'0"	
7 - BED ROOM - 13'0"X10'0"	



SHARAN SAPPHIRE

redefining skyline living...

More Than 75% Open Space For Green Living

LAYOUT PLAN



A luxurious dream scape in the sky



SHARAN SAPPHIRE

About Sharan Sapphire

SHARAN SAPPHIRE is where you can soak yourself in the dream scape of elegance and high living. Kissing the clear blue sky, this high-rise offers you a heavenly retreat with grand features and amenities to pamper your dream.

Sapphire not only exemplifies a luxurious treat to your senses, with its ultra modern privileges, but it also represents quality construction, with its world class structure and marvelous designs. So, as you explore every corner of Sapphire, we promise that it would speak to you about its superior class and majestic comfort.

Owing to its strategic location in the residential zone of one of the prime areas of the city, MOTERA, coupled with its stature and dreamlike living, SHARAN SAPPHIRE is set to offer you a never like before experience in the skyline of the city.





SPECIFICATION

Structure : Earth Quake Resistance Design R.C.C. frame structure.

Flooring : Vitrified Tiles Flooring In drawing. dining and bedrooms rustic tiles in balcony.

Kitchen : Mirror polished granite platform with dedo of designers tiles up to lintel level with S.S.sink.

Toilets : Designer bathroom tiles upto lintel level in all toilets. Gas gayser point in attach toilets

Fittings : Jaquare or equivalent.

Sanitary ware : Cera Or Equivalent.

Doors : Decorative main entrance door with quality fitting and other doors with wooden framed flesh door with both side laminated.

Windows : Aluminum sliding windows with stone jamp.

Electrification : Concealed 3- Phase copper wiring with adequate number of point in all rooms with branded modular switches

Finished internal : Mala plaster with white cement based putty finish.

External : Double Coate Sand Face Plaster With 100% Acrylic Waterproof Paint.

Note :

- All right for materials and plan remains with developer.
- This Brochures Is Not A Binding Document And Is Meant Only For Display Purpose.
- The Developers Reserve The Right To Change Or Revise The Scheme Or Part Of The Scheme Or Any Details There Of.
- Dimensions Mentioned Here Are Approximate.
- Service Tax, Stamp Duty, Registration, Maintenance, AUDA, TORRENT, Legal Charges And Any Other Govt. Taxes During Or After The Scheme Will Be Borne By The Purchaser.
- Irregular Payment Cause The Cancellation Of booking

Design By :
OM DESIGN | 98989 81904

redefining skyline living...

2 & 3 BHK high life apartments