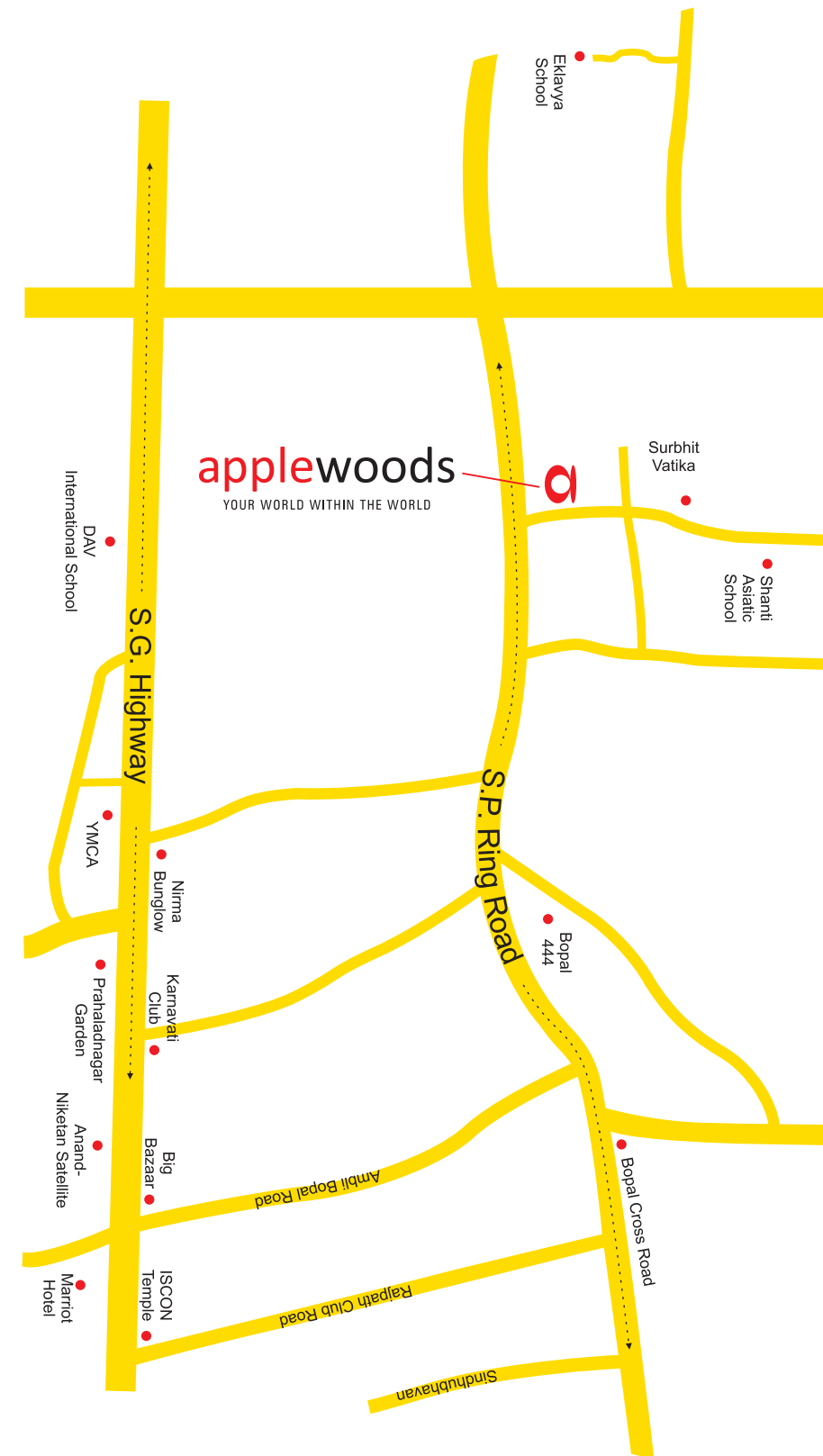




SITE  
LOCATION

**KEY DISTANCE**

- From S.G. Highway, 5 min. drive
- From Bopal Cross Road, 5 min. drive
- From Karnavati Club, 7 min. drive
- From ISKCON Temple, 10 min. drive



**SITE:** Applewoods Township, Shantipura Cross Road, Sardar Patel Ring Road, Ahmedabad - 58  
**OFFICE:** 16, Abhishree Corporate Park, Iscon - Ambli Road, Ahmedabad - 58  
**@ sales@applewoods.co.in** ☎ +91 90999 33690

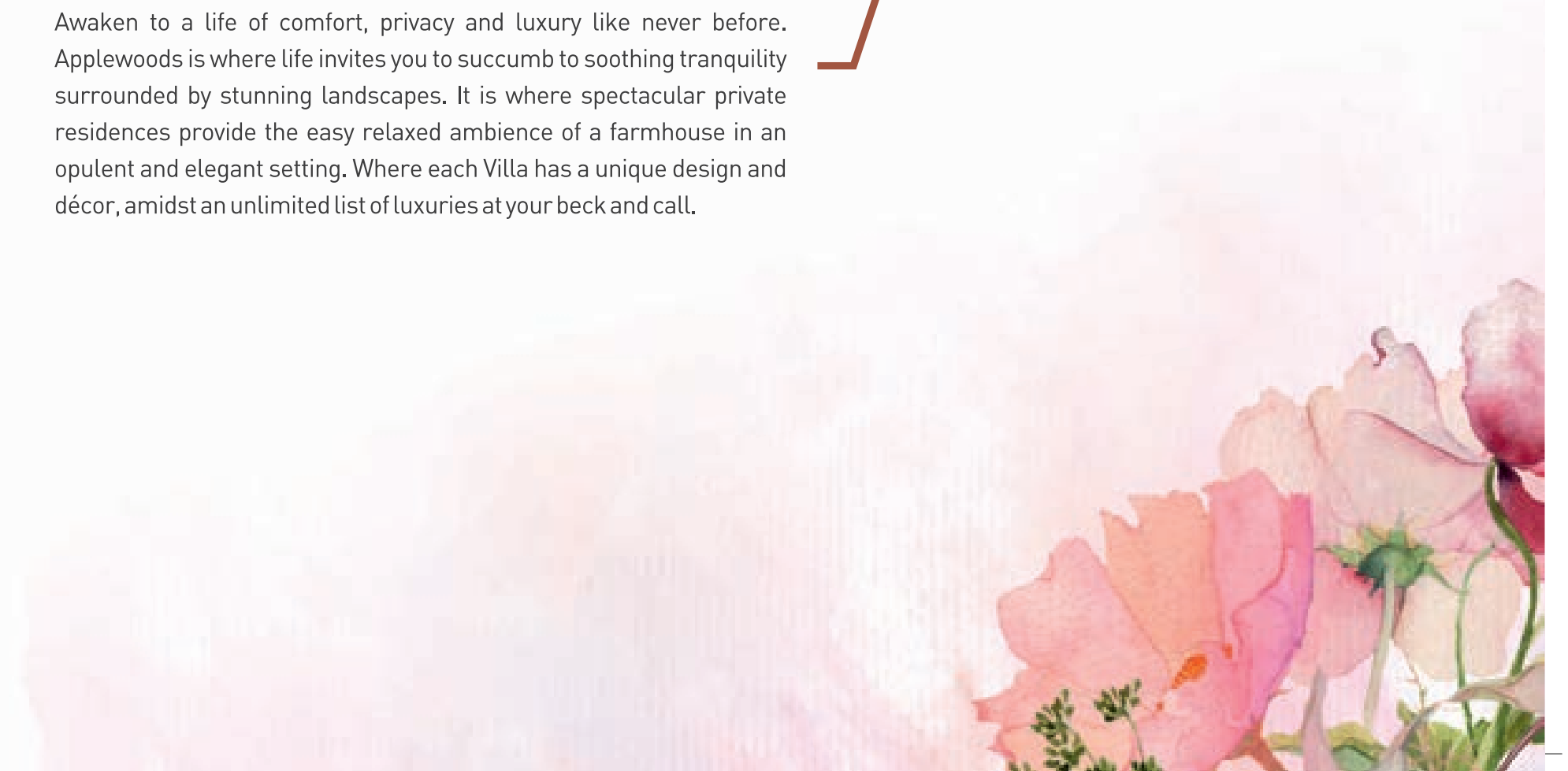


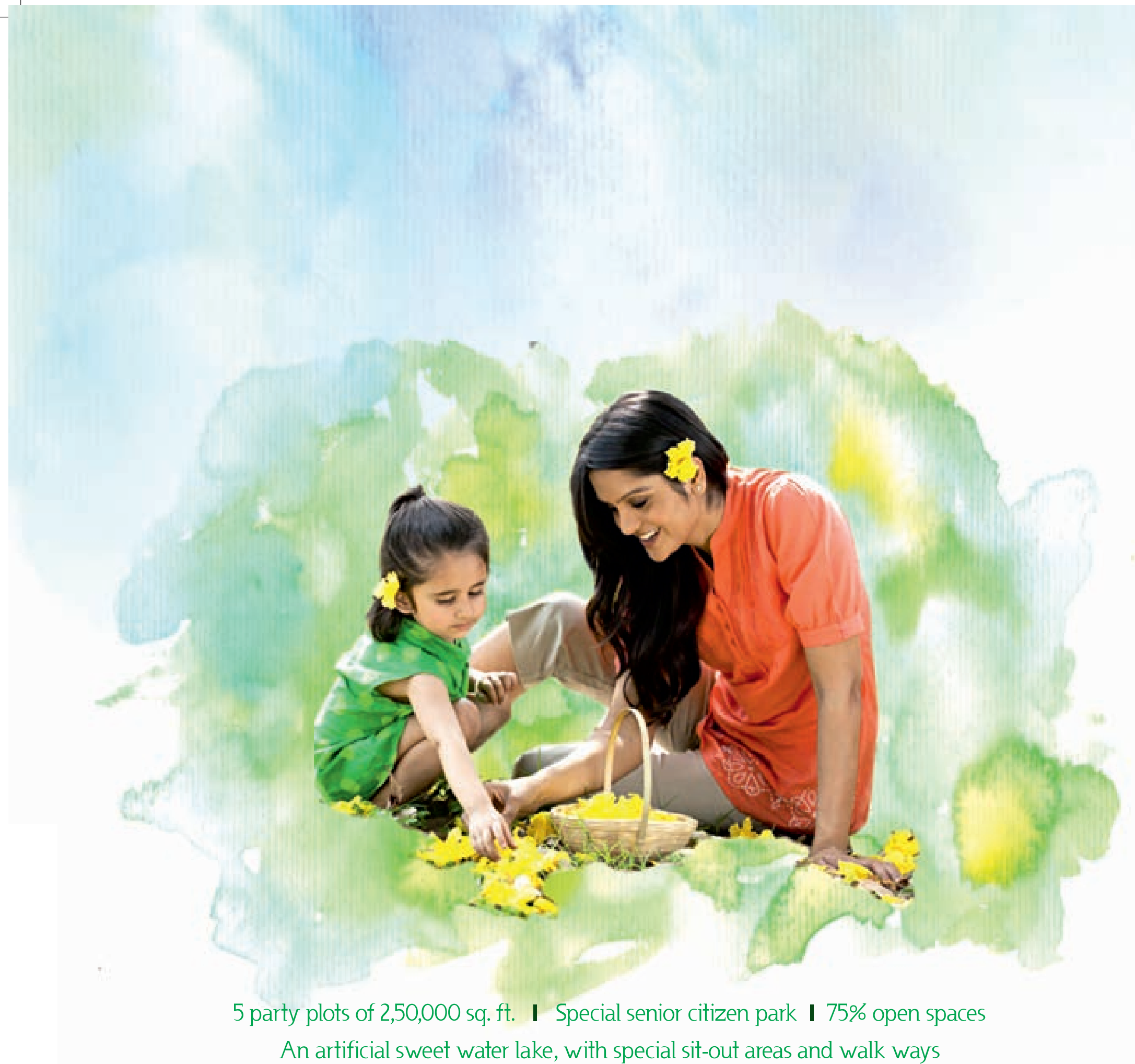
experience *the*  
extravagance



# a villa lifestyle

Awaken to a life of comfort, privacy and luxury like never before. Applewoods is where life invites you to succumb to soothing tranquility surrounded by stunning landscapes. It is where spectacular private residences provide the easy relaxed ambience of a farmhouse in an opulent and elegant setting. Where each Villa has a unique design and décor, amidst an unlimited list of luxuries at your beck and call.



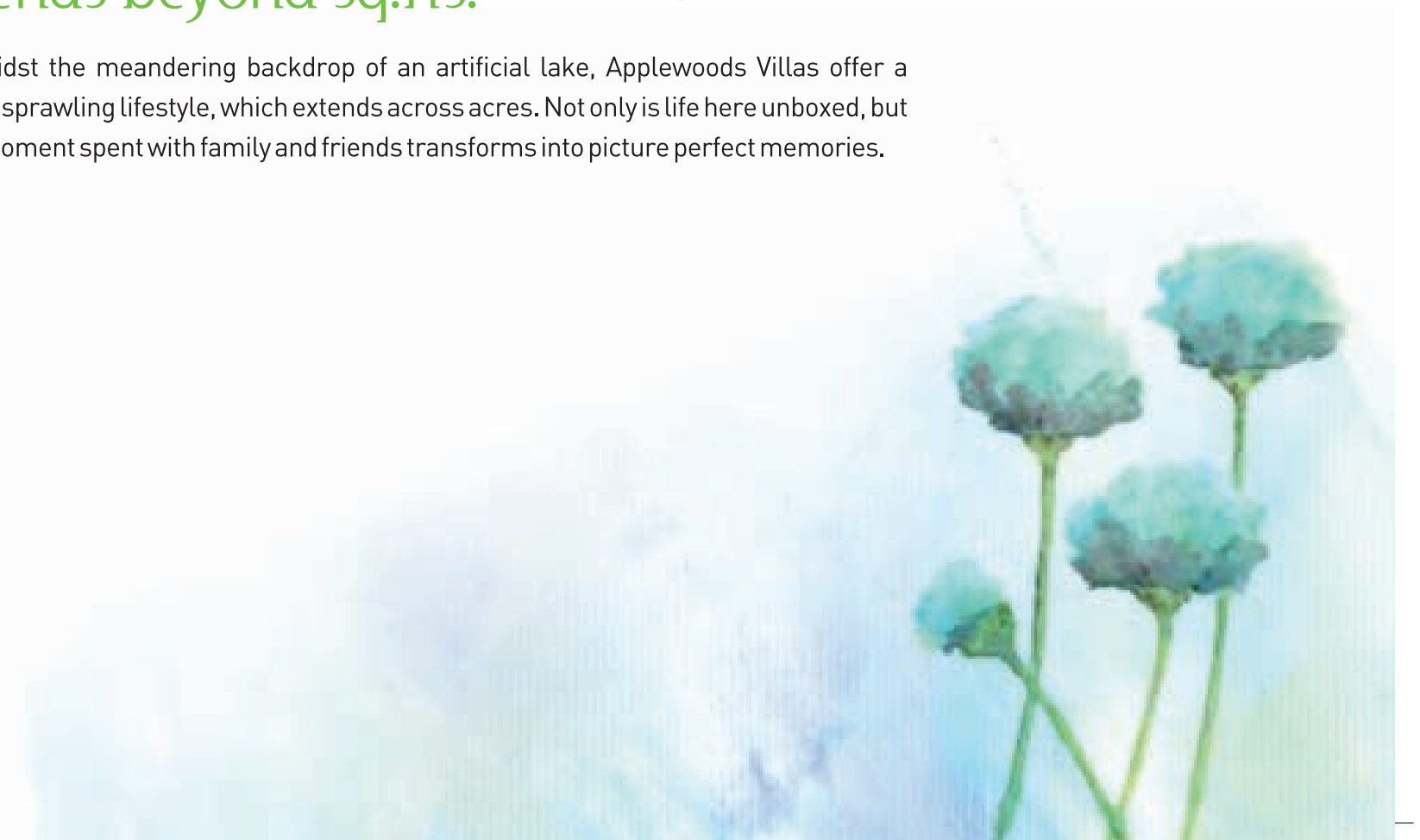


5 party plots of 2,50,000 sq. ft. | Special senior citizen park | 75% open spaces  
An artificial sweet water lake, with special sit-out areas and walk ways



life's  
landscape  
extends beyond sq.ft.

Set amidst the meandering backdrop of an artificial lake, Applewoods Villas offer a lavishly sprawling lifestyle, which extends across acres. Not only is life here unboxed, but every moment spent with family and friends transforms into picture perfect memories.





Villas designed by  
**Hasmukh C. Patel**

HCP's architectural designs are rooted in the belief that design is the search for elegant and sustainable solutions to practical problems. This is reflected across our Villas through open to sky spaces, akin to an enclosed aangan.

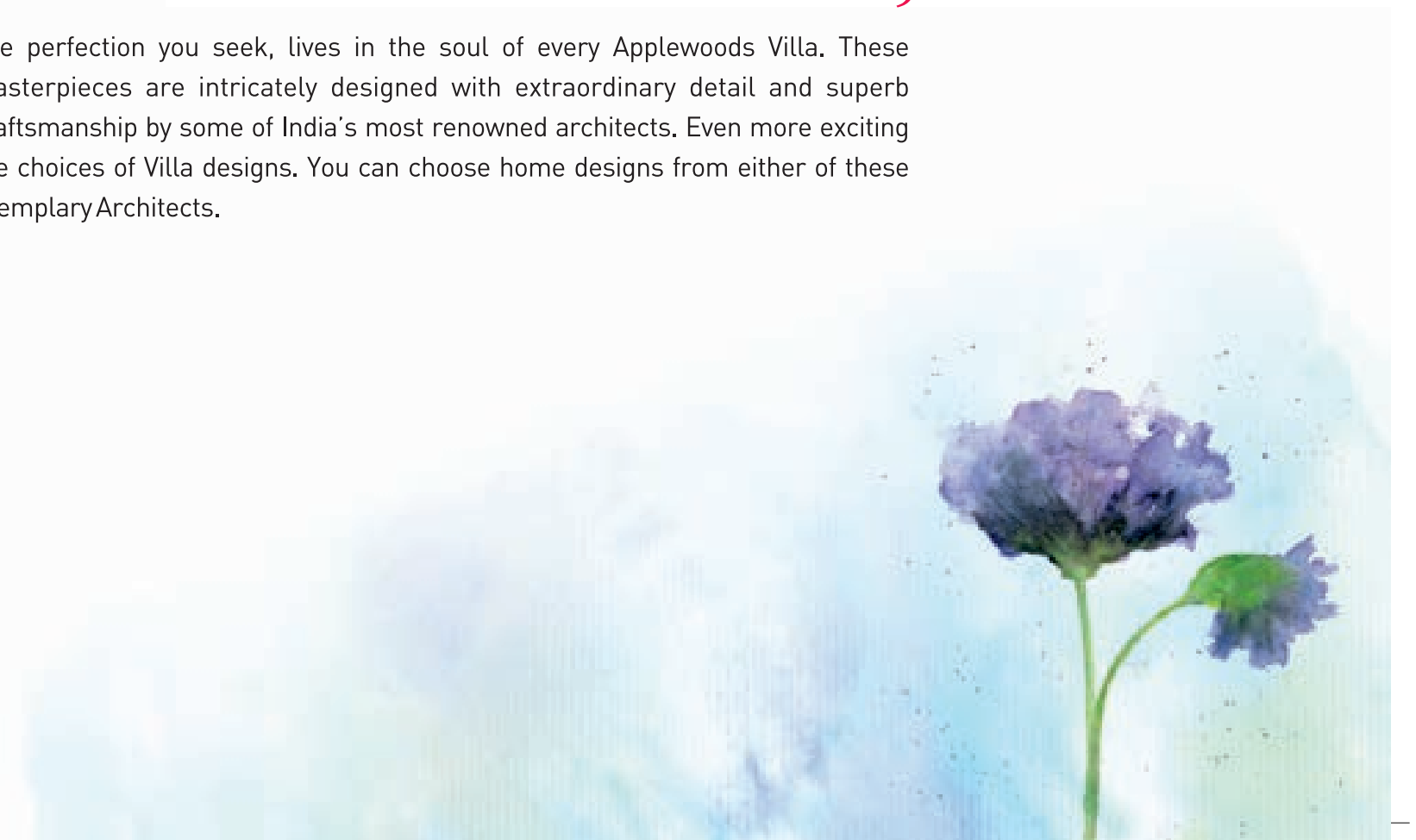
Villas designed by  
**Abhimanyu Dalal Architects**

The vocabulary of this architect has strong contemporary undertones. His design style has a western touch which reflects the ultra modern look and feel of our villas. Through a sustainable approach, the home becomes a balance of science and art.



homes crafted as  
**Mansions**  
of luxury

The perfection you seek, lives in the soul of every Applewoods Villa. These masterpieces are intricately designed with extraordinary detail and superb craftsmanship by some of India's most renowned architects. Even more exciting are choices of Villa designs. You can choose home designs from either of these exemplary Architects.





- Avenue roads with trees, shrubs and vegetation
- Stylish street lights
- 24x7 treated pressurized water facility with emergency water reservoir
- Common water treatment plant and dedicated common sewage facility
- Rain water harvesting and percolating wells
- Secured gated community of 52 acres for the residents with private roads
- Convenient shopping
- 3 phase power for every house
- 7 years maintenance promise

intelligently 

# planned

living spaces

Designed to pamper your lifestyle, these exclusive premium Villas offer you the best blend of modern aesthetics and the most contemporary conveniences. These meticulously planned spaces are built around your daily needs, while offering you the serenity of natural surroundings.





- Party cottage
- Home theatre with large seating capacity
- Dedicated lawns for large parties
- 5 large common plots of over 2,50,000 sq. ft.

any time is the best time to



# celebrate

good times

Now you be the Rockstar at your own Party! With all the amenities and niches at the villa zone, you have all the reasons to celebrate and rejoice every occasion in any season. You can even create a full-day or weekend events with great activities and awesome parties in a safe and secure environment.



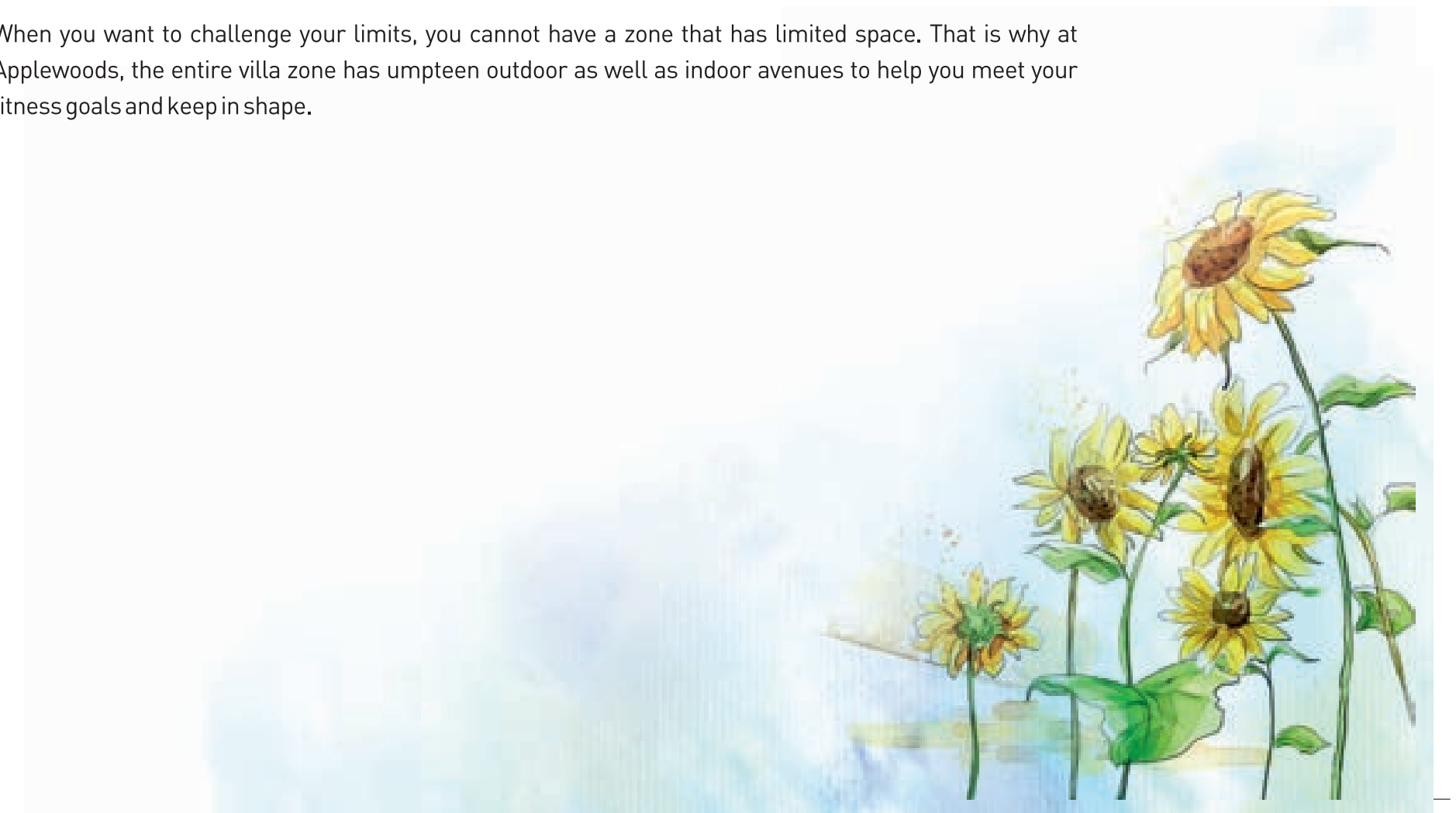


- Jogging paths within landscaped parks
- Fully equipped health club and spa
- Yoga and aerobics hall
- Tennis, volleyball & basketball court
- Swimming pool with toddlers' pool
- Indoor games facilities

# a fitness zone

without boundaries

When you want to challenge your limits, you cannot have a zone that has limited space. That is why at Applewoods, the entire villa zone has umpteen outdoor as well as indoor avenues to help you meet your fitness goals and keep in shape.



## villa amenities

### Infrastructure

- 5 lac sq. ft. of landscaped common area
- An artificial sweet water lake
- 24x7 treated pressurized water facility
- Avenue roads with trees, shrubs and vegetation
- Common water treatment plant and dedicated common sewage facility
- Rainwater harvesting and percolating wells
- Emergency water reservoir
- 7 years maintenance promise

### Power & Consumption

- Stylish street lights
- Service corridor for power, drainage, water supply and LV cable network
- 3 phase power for every house
- LV cable for telecommunication and other facilities

### Security

- Secured gated community of 52 acres for the residents with private roads
- 24x7 security for entire villa zone

### Recreation & other amenities

- A sprawling clubhouse with indoor game facilities and power back-up
- Swimming pool with toddlers' pool
- Fully equipped health club and spa
- Party cottage and home theatre with large seating capacity
- Yoga and aerobics hall
- Jogging paths within secured community zone and within landscaped parks
- Dedicated lawns for large parties
- Special senior citizen park
- Convenient shopping with an outdoor café, pharmacy shop, laundry and provision shop



## applewood amenities

### Community living

- More than 20,000 people planned as residents
- Over 90,00,000 Sq. Ft. of development
- More than 3500 Apartments and 397 Villas
- More than 6,00,000 Sq. Ft. of corporate office space
- More than 1,00,000 Sq. Ft. of commercial / retail space

### Peaceful living

- Clear and marketable titles
- Loans available from leading nationalized and private sector banks such as SBI, Canara, ICICI, HDFC etc.
- High quality, earthquake-resistant construction
- 24 x 7 security & power back-up for common services
- 24 x 7 water supply and piped gas supply
- Multiple payment options to suit your needs

### Convenient living

- Planned by international architects
- Concierge service
- Commercial complex for entertainment and shopping needs of township residents
- Community living experience
- Renowned schools & health centers in close proximity
- Restaurants and fast food centers at walking distance

### Green living

- Water treatment plant
- Rainwater harvesting
- Drinking water from Narmada
- Water reservoir








  
**Villa Santolina**

**Villa Type 1 - HCP**  
 405 Sq.yards or 491 Sq.yards  
 Plot Area: 438 Sq.yards onwards

**Villa Type 2 - ADA**  
 430 Sq.yards  
 Plot Area: 438 Sq.yards onwards


  
**Villa Sidalcea**

**Villa Type 1 - HCP**  
 629 Sq.yards or 660 Sq.yards  
 Plot Area: 612 Sq.yards onwards

**Villa Type 2 - ADA**  
 574 Sq.yards  
 Plot Area: 612 Sq.yards onwards

**Villa Type 3 - AVN**  
 542 Sq.yards or 621 Sq.yards  
 Plot Area: 650 Sq.yards onwards


  
**Villa Semillon**

**Villa Type 1 - HCP**  
 790 Sq.yards or 816 Sq.yards  
 Plot Area: 875 Sq.yards onwards

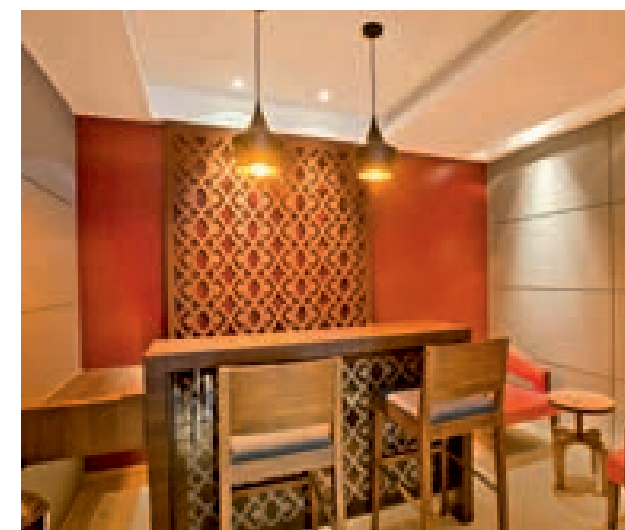
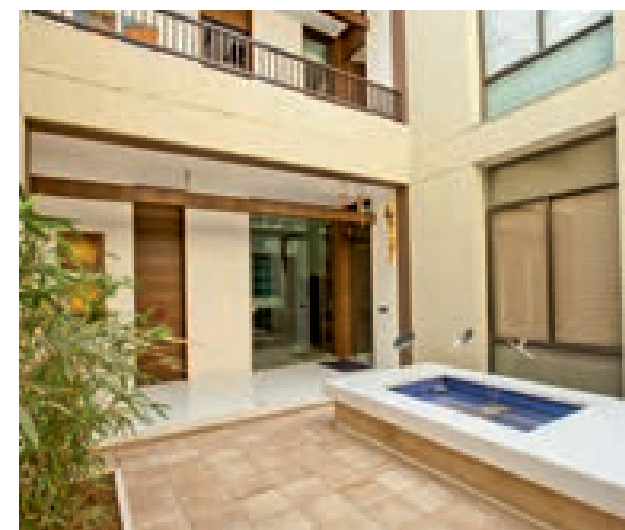
**Villa Type 2 - ADA**  
 863 Sq.yards or 890 Sq.yards  
 Plot Area: 875 Sq.yards onwards


  
**villa silene**

**Villa Type 1 - HCP**  
 345 Sq.yards  
 Plot Area: 311 Sq.yards onwards



A dream lifestyle with luxury residing in its soul; our 372 villas are masterpieces to give you and your family a lifestyle that suits your class. Dwell in an exotic experience of untouched nature that seamlessly blends into an ultra modern lifestyle with a host of amenities.



Actual images of the Villa



# cherish

the bond of trust and happiness

Villa  
Santolina

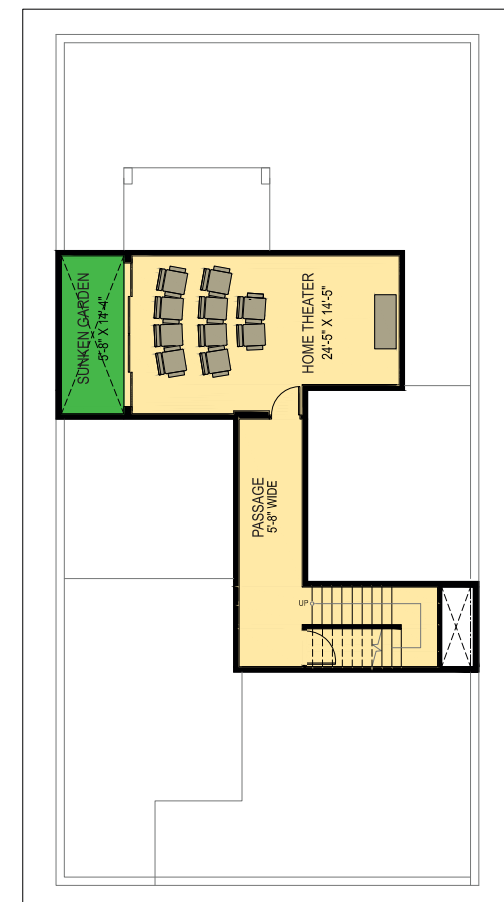
These Villas are an abode of luxury spread across an expanse of nearly 400 square yards. Classically styled with elegant architectural elements, these Villas offer world class living experience and are built to provide utmost comfort and convenience to complement your lifestyle.



Villa  
Santolina

Type 1 - HCP

405 Sq.yards or 491 Sq.yards  
Plot Area: 438 Sq.yards onwards

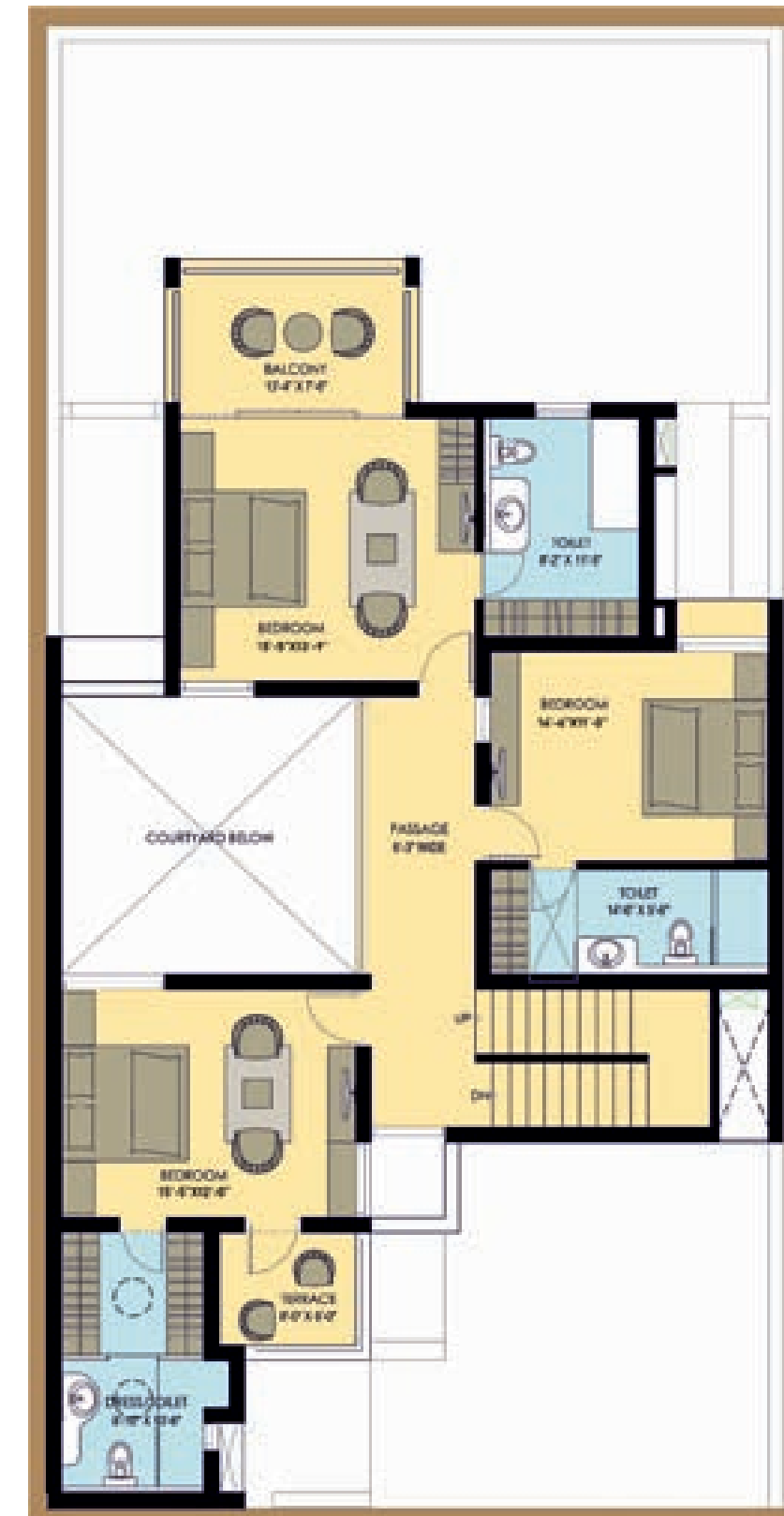


Basement (Optional)  
80 Sq. yards

Ground Floor  
185 Sq. yards



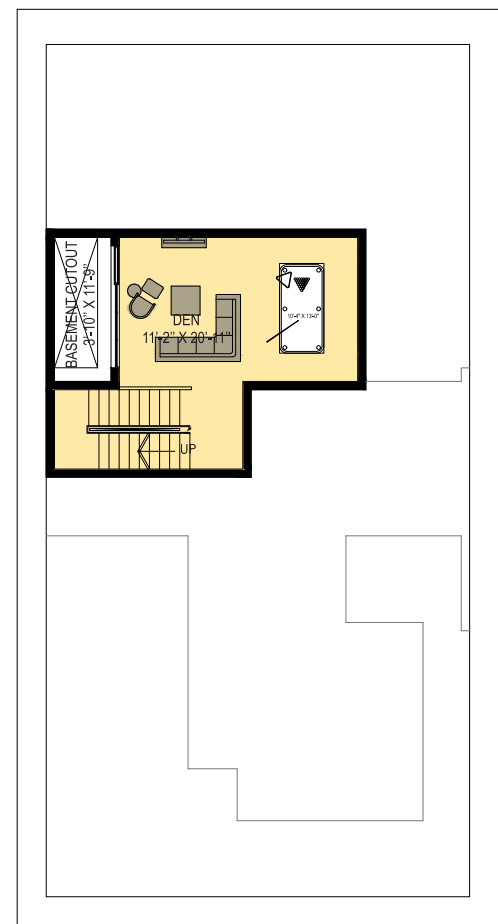
First Floor  
187 Sq. yards



Villa  
Santolina

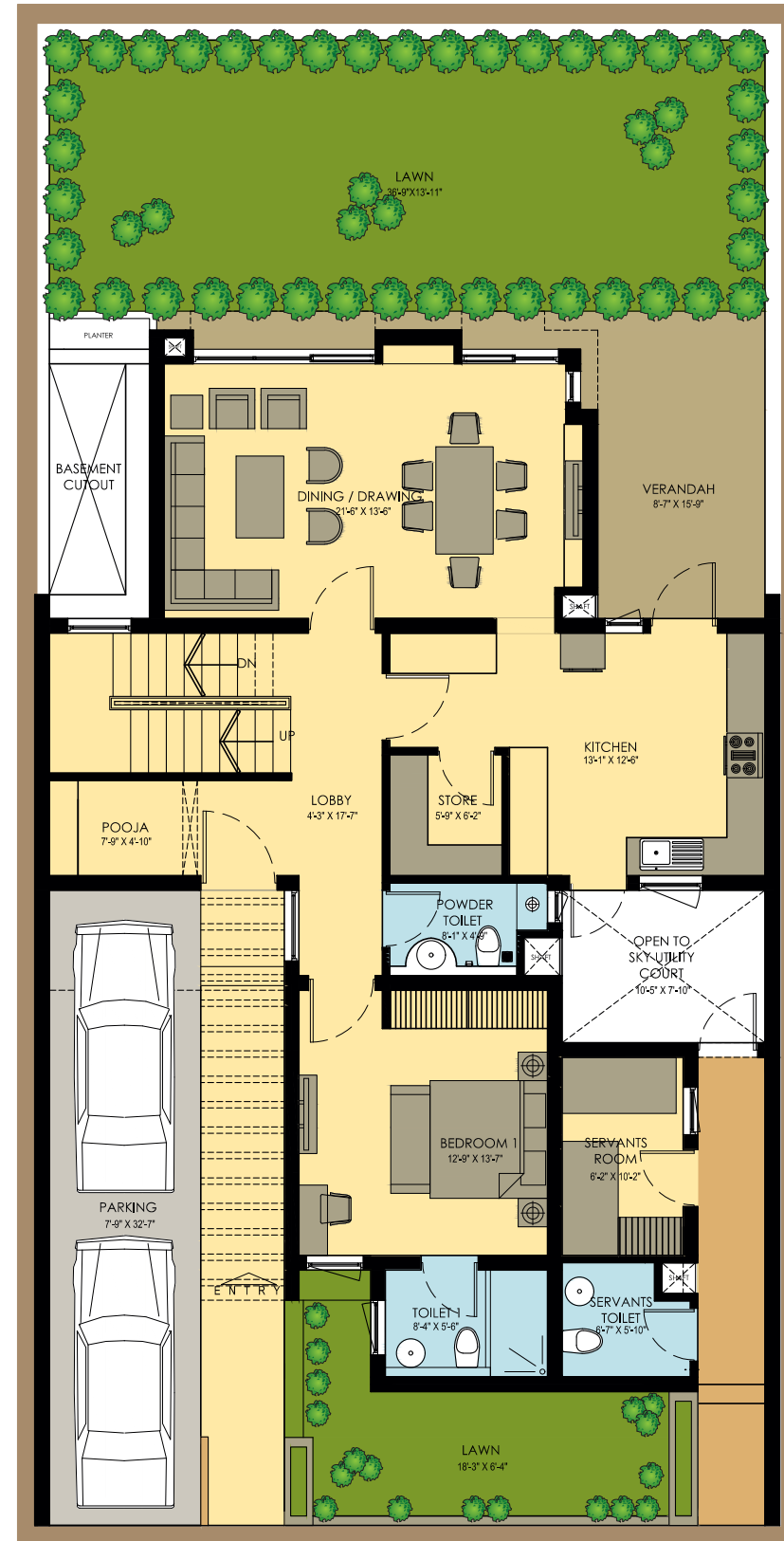
Type 2 - ADA

430 Sq.yards  
Plot Area: 438 Sq.yards onwards



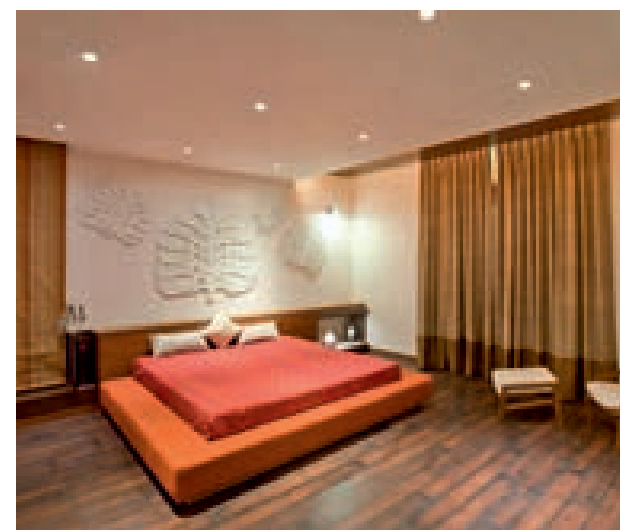
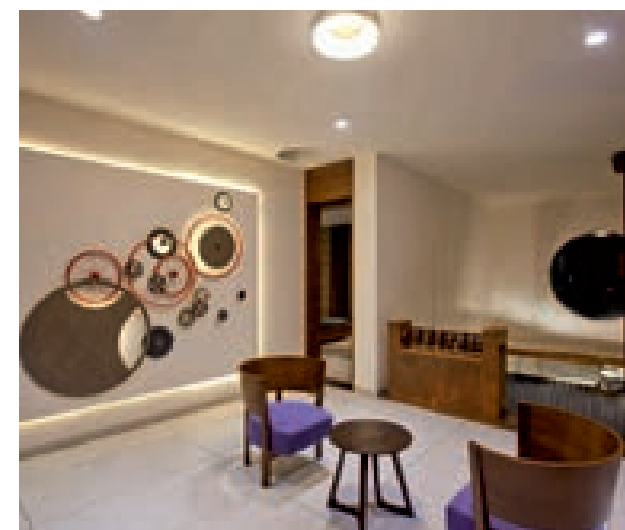
Basement (Standard)  
63 Sq. yards

Ground Floor  
164 Sq. yards



First Floor  
184 Sq. yards





Actual images of the Villa

**applewoods**  
YOUR WORLD WITHIN THE WORLD

# opulence unparalleled

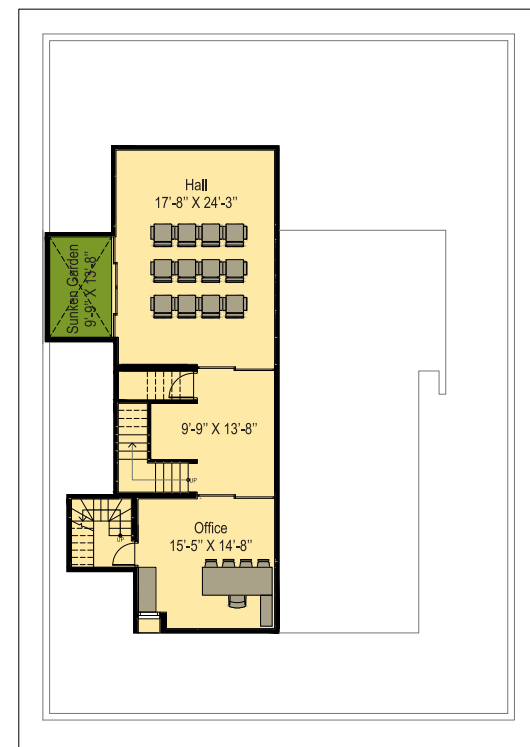
Designed with an expanse of over 600 square yards, Sidalcea is an abode which touches the zenith of inspirational living. It stands out as a rare gem, where you can take advantage of the pristine nature that surrounds you and behold its surprises and relaxing sounds.

Villa  
**SIDALCEA**

# Villa SIDALCEA

## Type 1 - HCP

629 Sq.yards or 660 Sq.yards  
Plot Area: 612 Sq.yards onwards

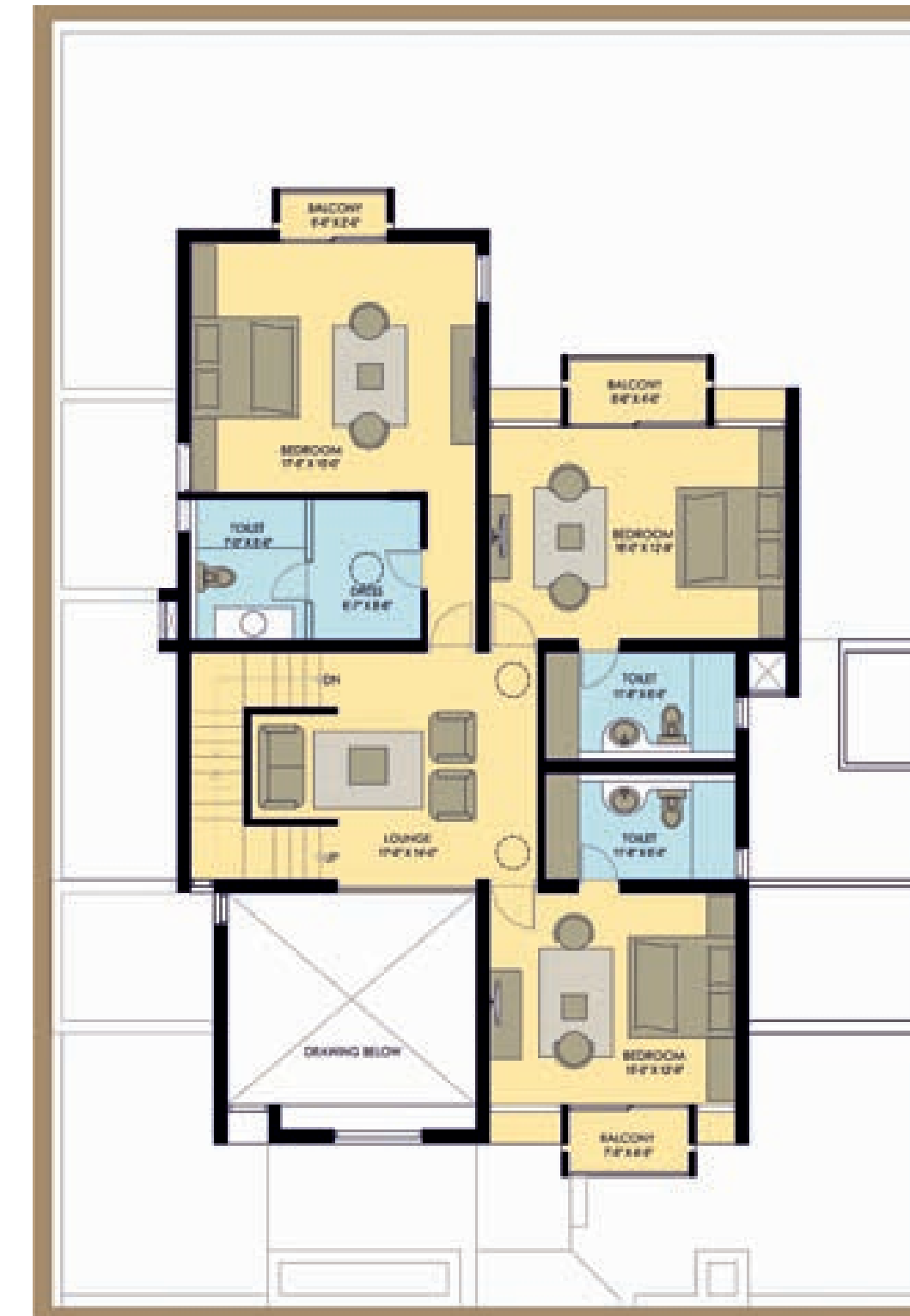


Basement (Standard) 98 Sq. yards  
Basement (Optional) 43 Sq. yards

Ground Floor  
253 Sq.yards



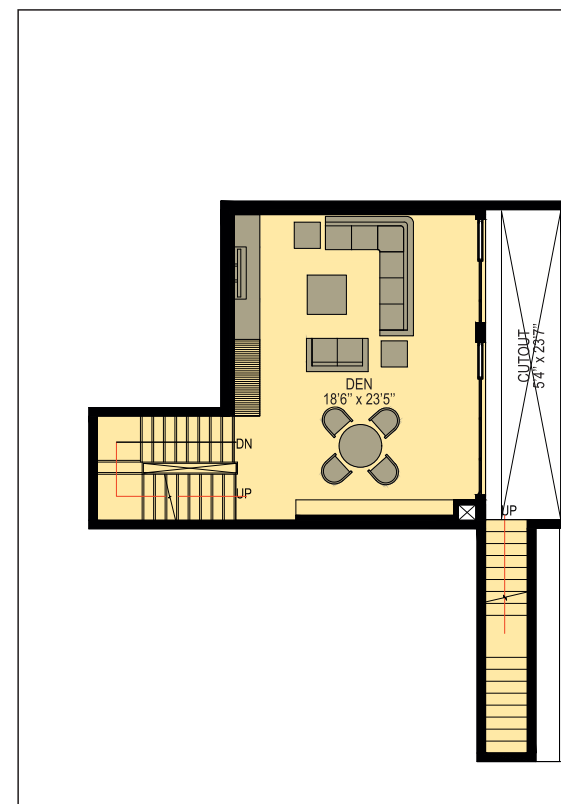
First Floor  
221 Sq. yards



Villa  
**SIDALCEA**

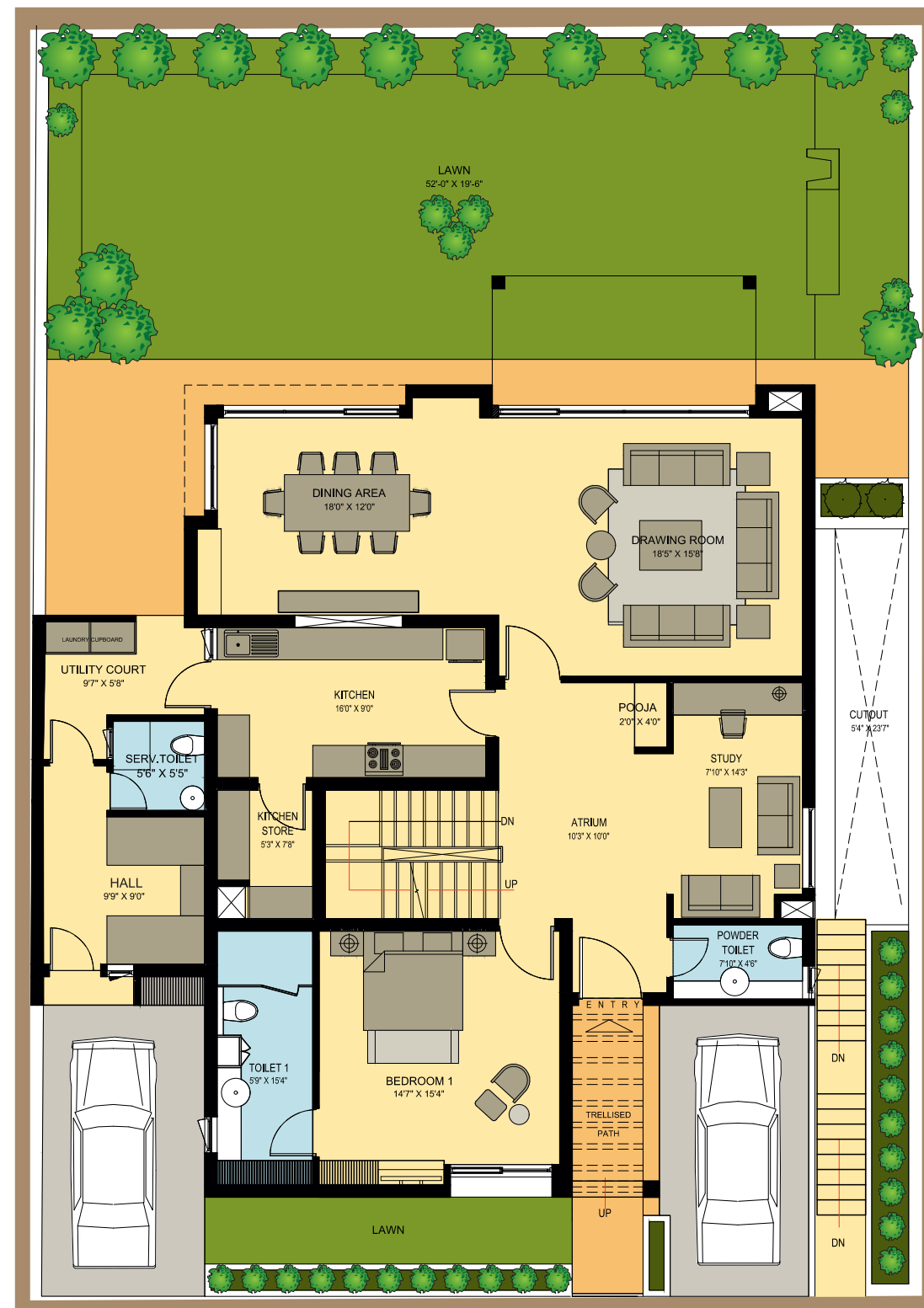
Type 2 - ADA

574 Sq.yards  
Plot Area: 612 Sq.yards onwards

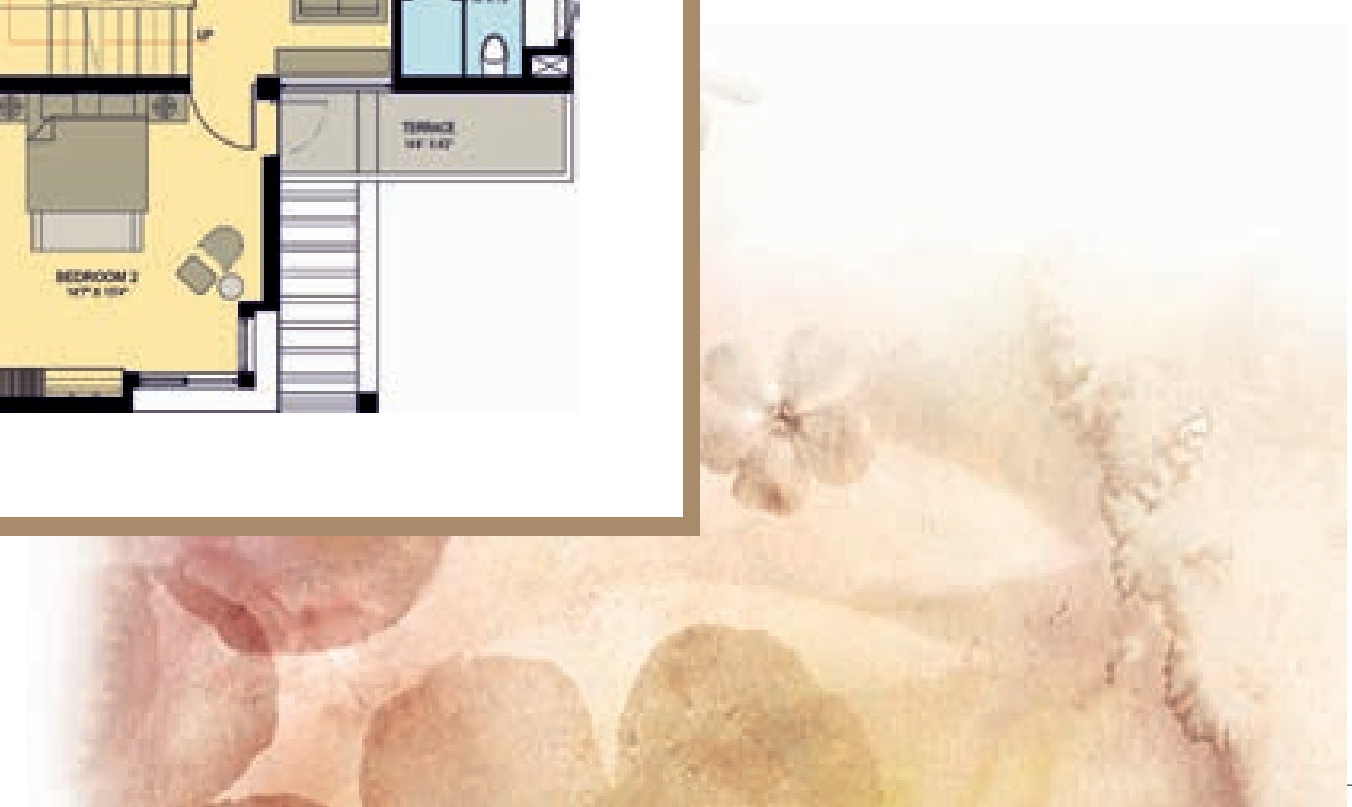


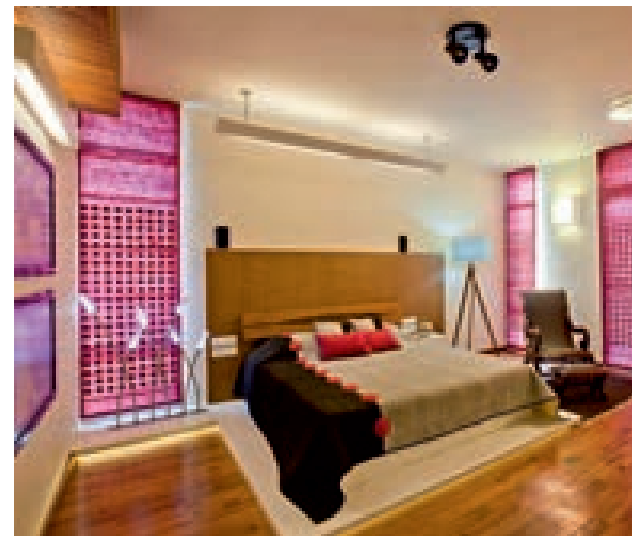
Basement (Standard)  
78 Sq. yards

Ground Floor  
251 Sq. yards



First Floor  
202 Sq. yards





Actual images of the Villa

  
 applewoods  
YOUR WORLD WITHIN THE WORLD

# LUXURY

that lasts a lifetime

The most luxurious Villas at Applewoods, Semillon has over 800 square yards of indulgent landscape. Designed for complete privacy, yet part of an integrated community living, homes here are a safe haven that offer a lifestyle experience that is beyond words.

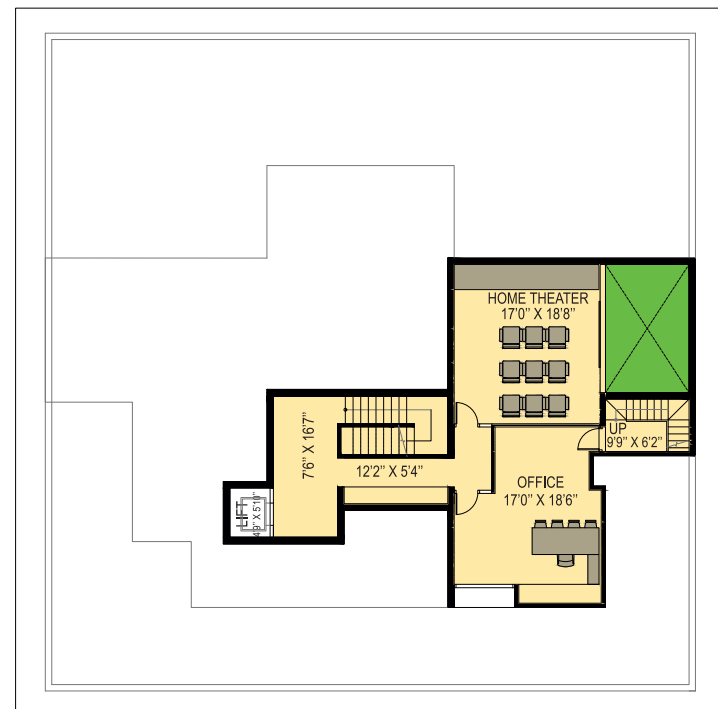
  
 Villa  
**Semillon**



Villa  
**Semillon**

Type 1 - HCP

790 Sq.yards or 816 Sq.yards  
Plot Area: 875 Sq.yards onwards



Basement (Standard) 98 Sq. yards  
Basement (Optional) 53 Sq. yards

Ground Floor  
335 Sq. yards



First Floor  
262 Sq. yards



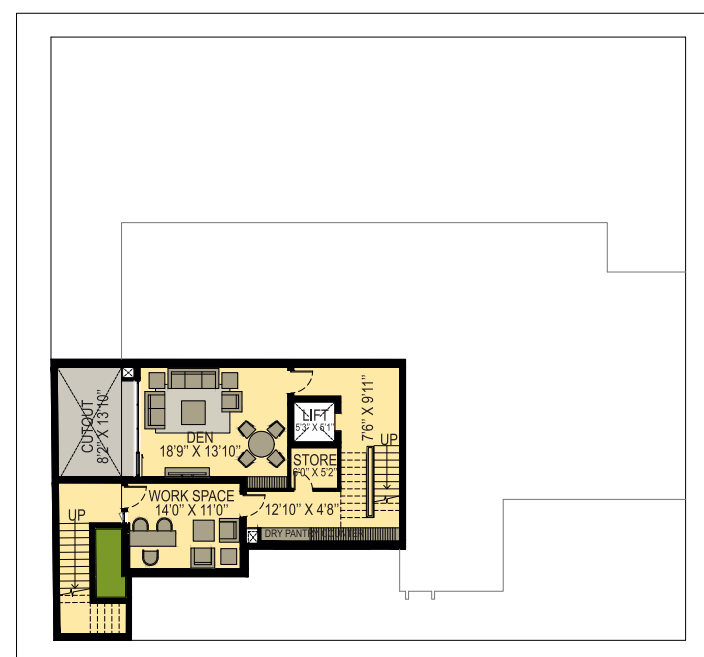
Ground Floor  
348 Sq. yards

First Floor  
352 Sq. yards

Villa  
**Semillon**

Type 2 - ADA

863 Sq.yards or 890 Sq.yards  
Plot Area: 875 Sq.yards onwards



Basement (Standard) 85 Sq. yards  
Basement (Optional) 36 Sq. yards

  
LAKE



- Artificial Sweet Water Lake
- Special Sit-out Areas
- Peaceful Walkways





Party Lawn

Open Plaza



Party Cottage

Carpet Lawn with Stage

Home Theatre with Large Seating Capacity





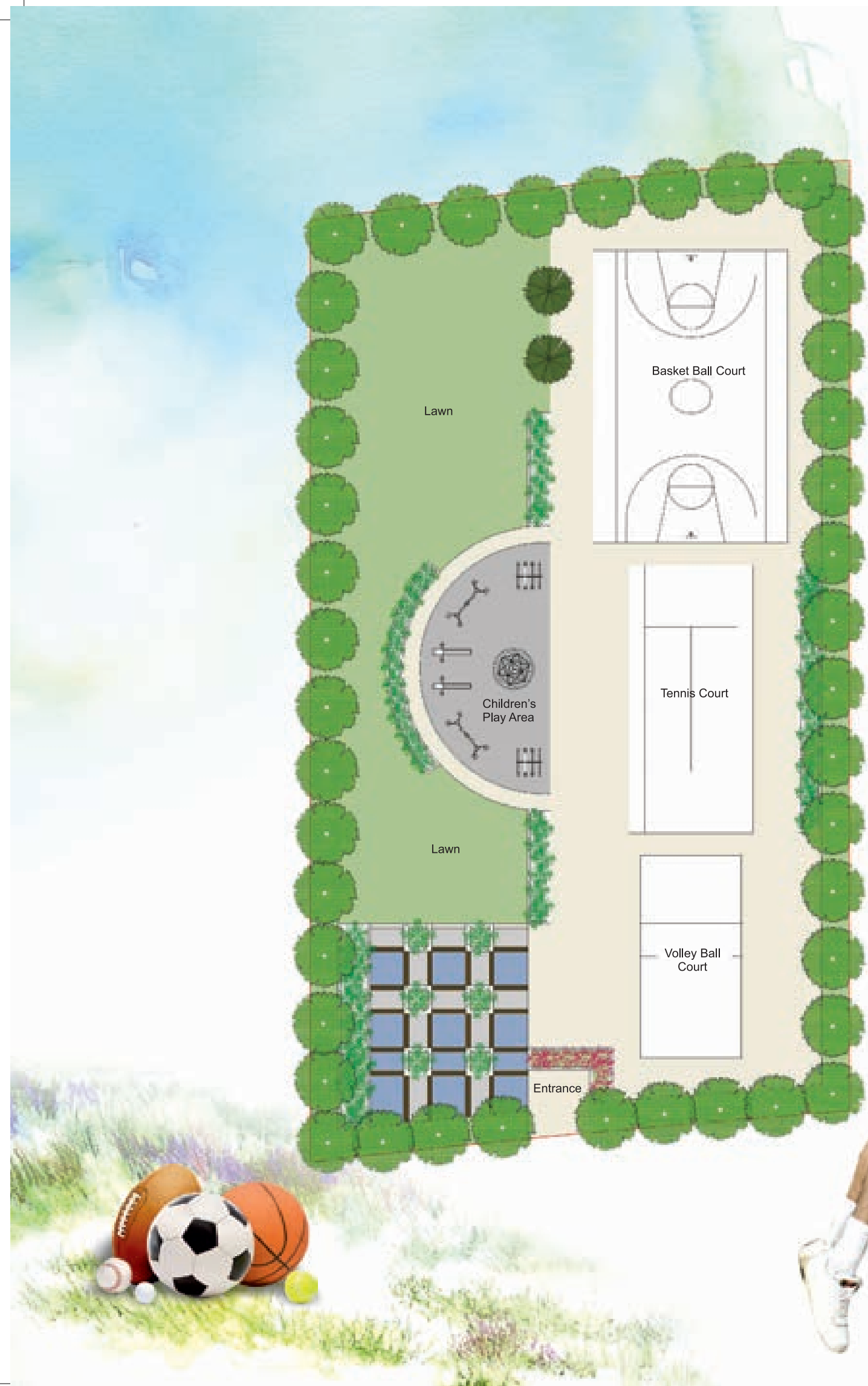
Swimming Pool with Toddlers' Pool

Gymnasium

Yoga Hall

Indoor Games



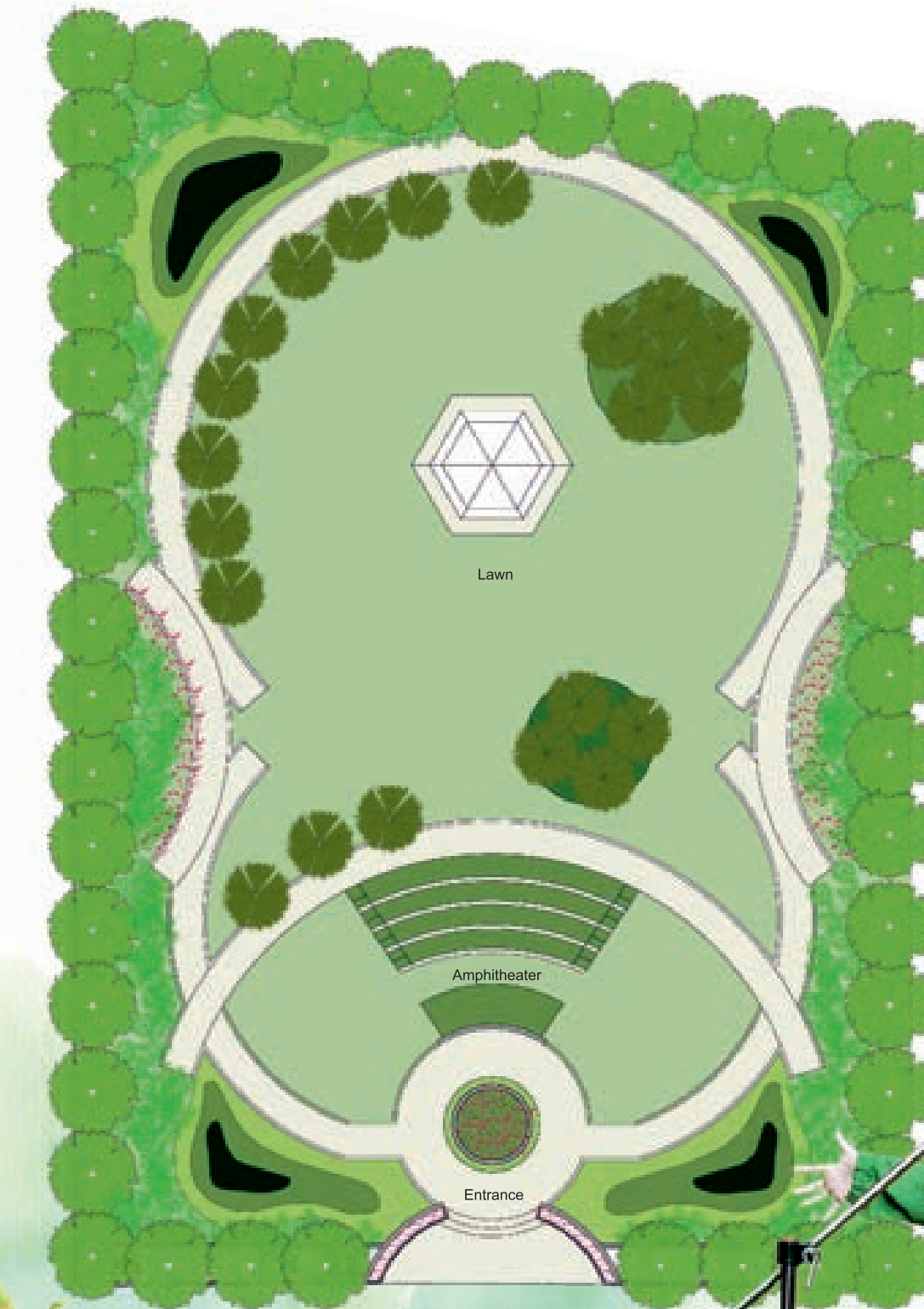


Children Play Area

Volley Ball Court

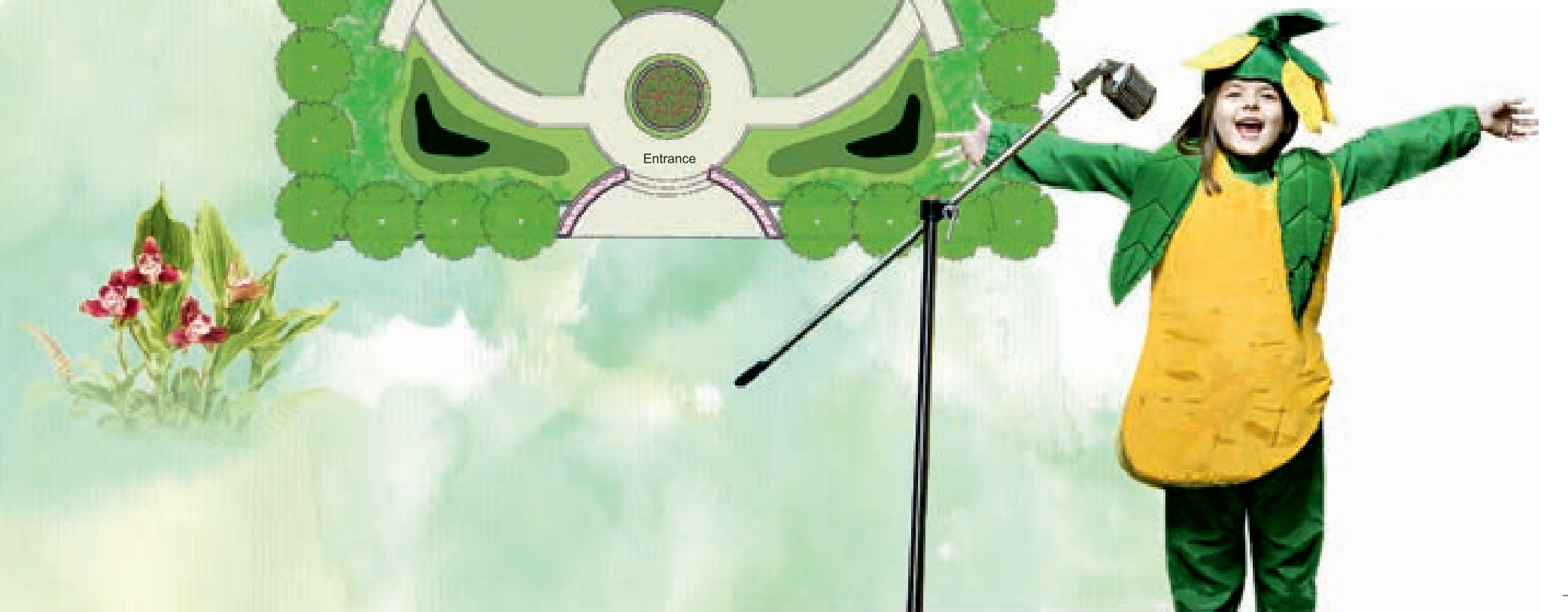
Basket Ball Court

Tennis Court



Senior Citizen Gazebo

Amphitheatre



397 VILLAS

Villa  
*Semillon*

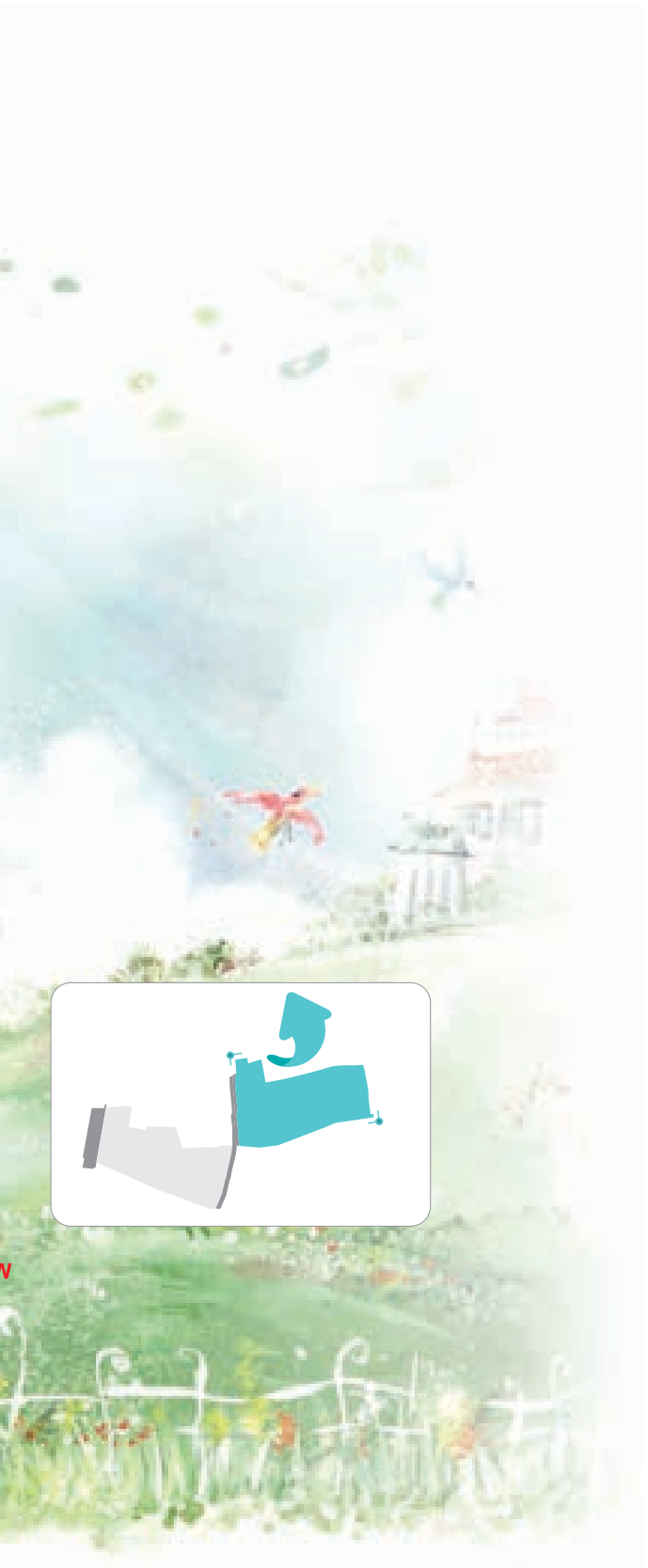
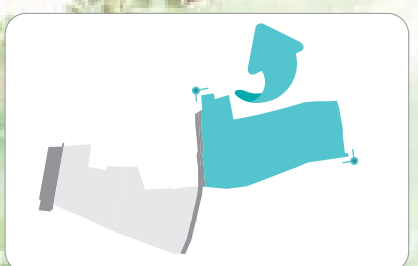
Villa  
*Sidalcea*

Villa  
*Santolina*

Villa  
*Silene*

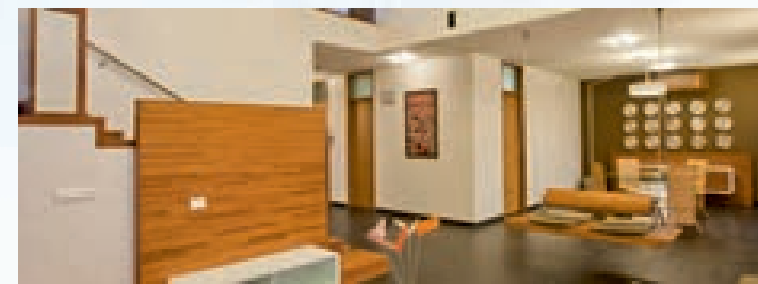


VILLA MASTER PLAN



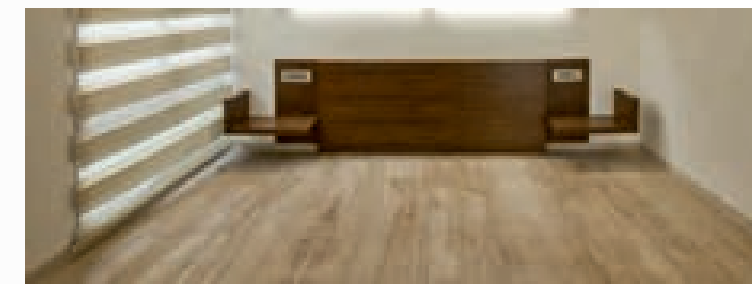
### Doors

- Internal Door: Both side laminated wooden flush door
- Main Door: Wooden paneled door polished on both sides



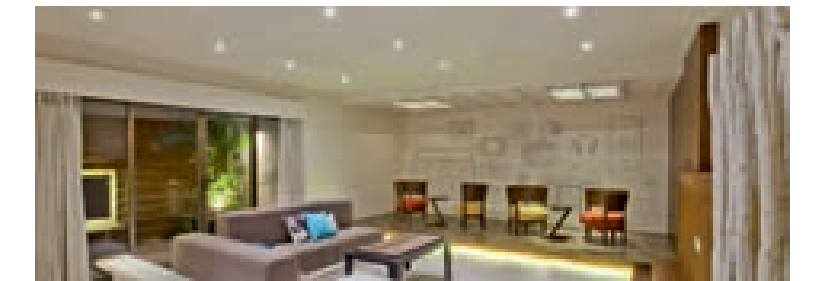
### Flooring

- Wooden laminate in master bedroom
- High quality vitrified tiles in other internal areas



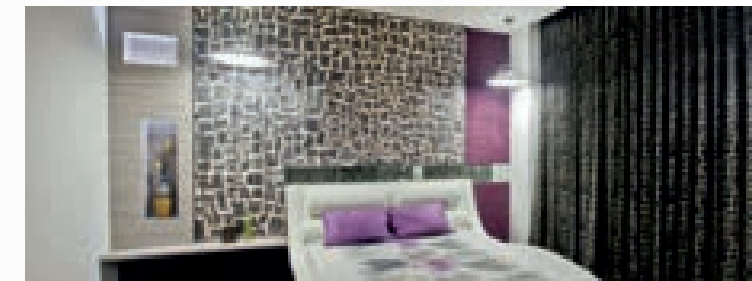
### Colour & plaster

- Interior: Putty Finish
- Exterior: 100% Acrylic paint and exterior plaster with texture cladding materials combination



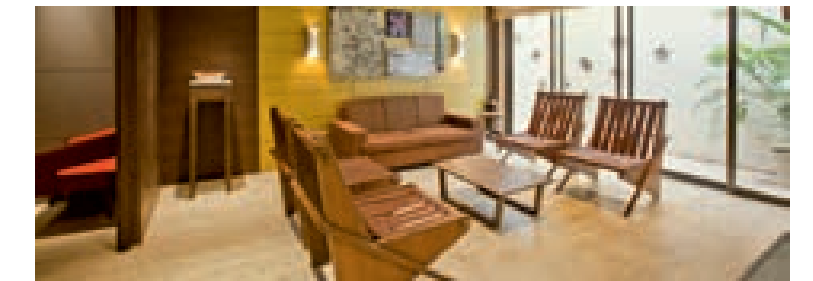
### Electrification

- 3 phase concealed ISI copper wiring with modular switches
- MCB distribution panel



### Windows

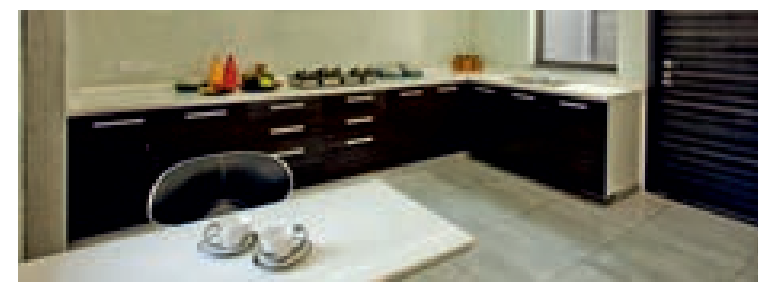
- Anodized / powder coated aluminum sliding windows



# specifications

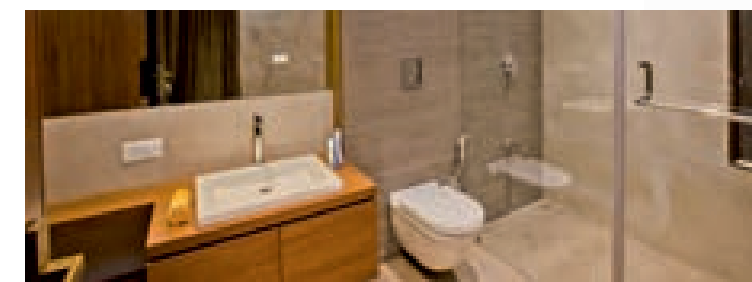
### Kitchen

- Ceramic tiles / Vitrified dado
- Modular Kitchen
- Fabricated aluminum shelves in store room areas
- Kota stone in wash area



### Toilets

- Glazed / Ceramic tiles / Vitrified combination in dado
- EWC couple closet – wall-hung (Jaguar / Equivalent)
- Very high quality CP fittings (Jaguar / Equivalent)



### Car parking

- Parking available for minimum 2 to 3 cars per villa in your own plot area over and above visitors parking in front of your house







the best planned  
township  
within the town

Ahmedabad has a hidden gem at the heart of the city. A gem which is home to the modern-day lifestyle of your dreams.

Applewoods is a township right within Ahmedabad, yet far away from its madness. A green island with pristine natural elements and all imaginable luxuries tucked in its sprawling 128 acre expanse, Applewoods is where life blossoms. Situated at a prime location, Applewoods gives you the advantage of superb connectivity across Ahmedabad.

An island of luxury, an abode of serenity, yet within the city



Apartments | Villas | Corporate Office Space | Commercial Retail Space

5min

drive from Bopal Cross Roads

7min

drive from Karnavati Club

9min

drive from Prahaladnagar

10min

drive from renowned schools, hospitas & offices