

FEELBLISS

1, 2 & 3 BHK Homes @ Chandani Chowk, Bavdhan



Blissful living with serenity of olden and luxuries of modern times

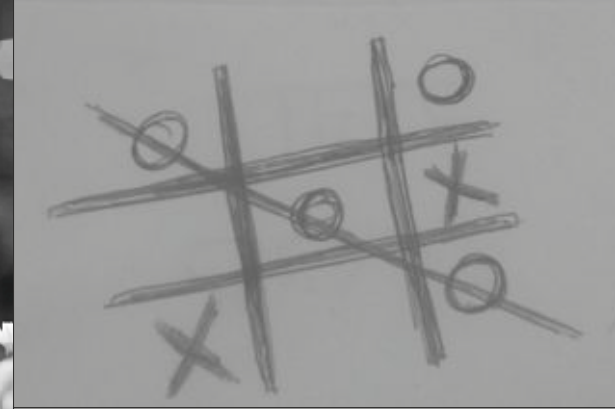
तुमच्या मनातलं कोथरूड...

असं होतं एका काळातलं कोथरूड... शांत, निवांत, आरामात पहुडललेलं, स्वच्छंद बागडणारं. मुलांना खेळायला मोकळ्या जागा होत्या. मैदानावर खेळताना, दंगामस्ती करताना चिल्लर पार्टी धमाल करायची. या कोथरूडला स्वतःची स्पेस होती. शहरापासून जवळ असूनही ते गजबजाटापासून कोसो दूर होतं.

शहर विस्तारलं तसं कोथरूडमधली परिस्थितीही पालटली. मोकळा वाटणारा रस्ता आता उशिरापर्यंत गजबजलेला असतो. पक्ष्यांच्या आवाजाऐवजी गाड्यांचे आवाज कान बधिर करतात. पण तरीही शहरापासून जवळ असल्यामुळे कोथरूड सोडून इतर कुठे जावंसं वाटत नाही!

FEELBLISS


1, 2 & 3 BHK Homes @ Chandani Chowk, Bavdhan



A person wearing a grey hoodie is seen from behind, sitting on a ledge and looking out over a city at sunset. The sky is filled with soft, golden light, and the city below is a blur of lights and buildings. The overall mood is peaceful and contemplative.

The bygone times return... with Feel Bliss

Yes, there is an answer to this dilemma. You don't need to live in the crowded, polluted central city anymore. Nor need you go away from the facilities that you require on a daily basis. There is a project with perfect balance of serene life and urban facilities, to offer you a blissful old life in modern times!



Blissful old Kothrud
just minutes away from Kothrud!

FEEL **BLISS**

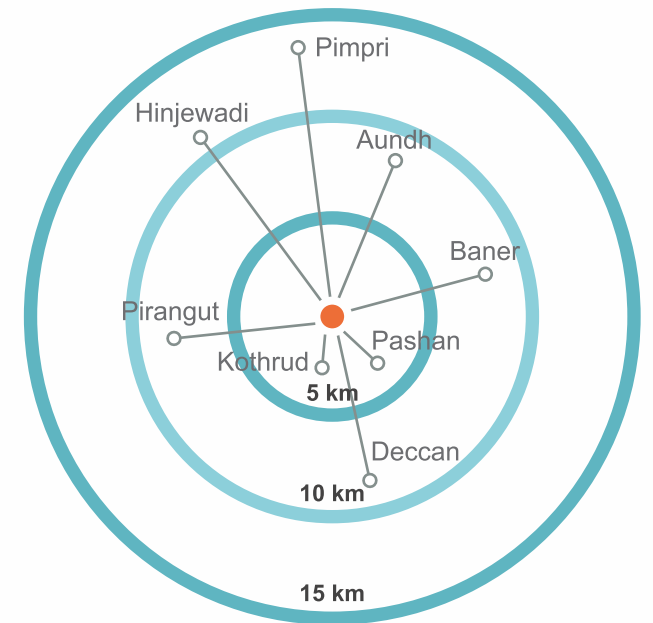
Yes, the blissful old Kothrud is back! With its green and serene space, coupled with all the luxuries and facilities of modern times.

Presenting Feel Bliss, a luxurious project of 3, 2 & 1 BHK, just few minutes away from Kothrud at Chandni Chowk, Bavdhan. Carefully designed to offer you a life in the vicinity of urban facilities, yet retaining a close connect with serene natural surroundings.

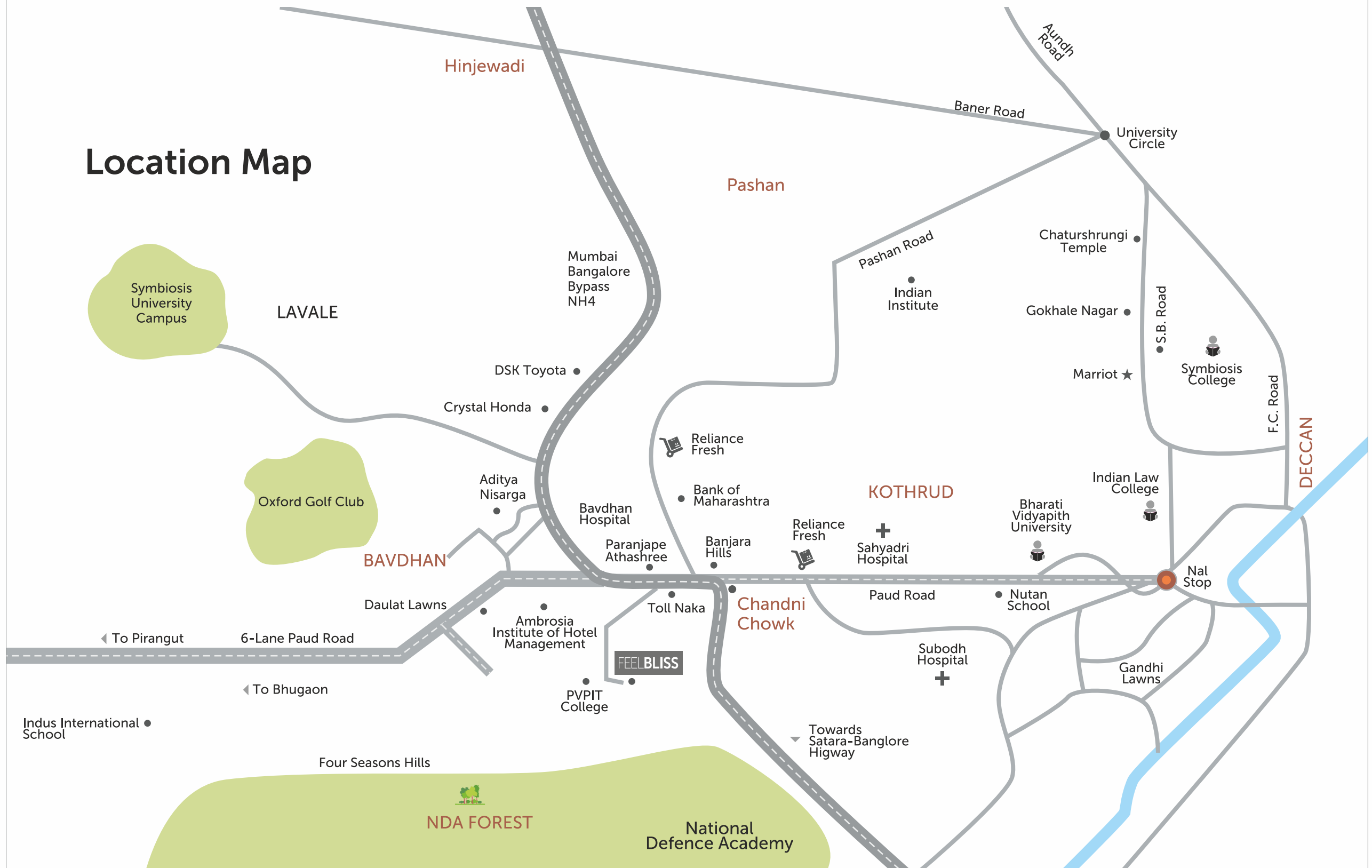


Feel connected

Welcome to Chandni Chowk, a green and serene place just few minutes away from Kothrud. It boasts an excellent connectivity with urban facilities as well as pleasant getaways in nature. On the south-west, there is a lush green belt with the NDA area. The north-east is dotted with educational institutes right from nursery schools to colleges offering higher education. The location is almost equi-distant from Hinjewadi IT Park, Pirangut Industrial Estate, Deccan Gymkhana and various shopping and entertainment destinations in Kothrud.



Location Map



Everything around

At Feel Bliss, you are always close to day to day necessities like schools, malls, restaurants, hospitals, etc. You have almost all the necessities within the radius of 5 kilometers with excellent road connectivity to each of them.

Schools



- Oxford International School
- RMD – Sinhgad School
- RYAN school, Orchid
- Paranjape School
- Jidnyasa School
- Balshikshan School, Kothrud
- Abhinav School, Erandwane
- Vidya School, Sus Road
- P. Jog High School, Mayur Colony
- City International School
- New India School, Bhusari Colony
- Millennium National School

Colleges



- PVPIT
- IndSearch
- MIT Kothrud
- Mahindra College
- MES Institute of Management, Mayur Colony
- Eklavya College
- Cummins College of Engineering for Women

Malls



- Big Bazaar
- Jai Hind
- Chroma
- Pune Central
- Reliance Fresh
- Desai Ambewale, Kothrud

Hospitals



- Mai Mangeshkar Hospital, Warje
- Deenanath Mangeshkar Hospital, Erandwane
- Sahyadri Hospital, Kothrud
- Krishna Hospital, Paud Road
- Shashwat Hospital
- Jog Hospital, Paud Road

Restaurants



- Up & Above
- Banjara Hills
- Dominoz
- Garden Court
- Ambrosia
- McDonald, Bhusari Colony

Spiritual Centres



- Ved Bhavan
- Jai Bhavani Mandir, Kothrud
- Mrutyunjayeshwar Mandir, Kothrud
- Balaji Mandir, Pashan
- Dashbhuja Ganpati Mandir, Kothrud
- Shankaracharya Math, Kothrud

Picnic Spots (Within 20 km)



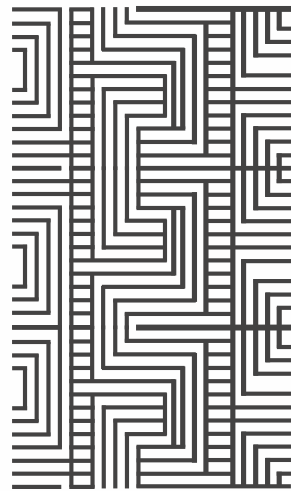
- Mulshi Dam
- Manas Lake
- Giriwan Resort
- Lavasa
- Oxford Golf Club



Feel the bliss of Green Home.

At Feel Bliss, your home is designed to reduce negative environmental impact, minimize usage of natural resources and improve overall quality of ambient environment. Everything that goes into the construction of these homes is used after carefully considering its effects on the environment, making them green homes in true sense of the term.

Creating Green Homes with eco-friendly construction practices



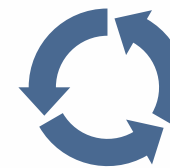
- Building orientation designed to enhance the value of natural light and wind flow



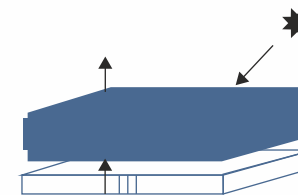
Surrounded by lush greenery and planned to minimize disruption of natural eco-system and maximize benefits from prevailing micro-climate.



Efficient waste management system



Use of recycled materials like fly ash and industrial waste as per BIS norms



Anti-termite treatment

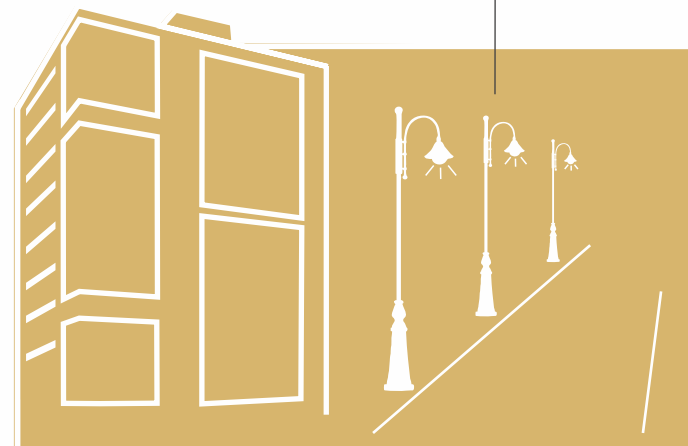


Using renewable energy

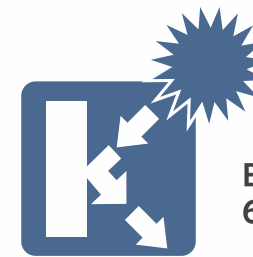
Green Homes at Feel Bliss strive to make maximum possible use of renewable energy sources like sun and wind. Use of renewable energy reduces the air pollution caused by power generation through conventional sources of energy. It is also cost-effective when compared with conventional energy.

Use of alternative energy sources in addition to conventional energy also offers more security. For example, when common lights are solar-powered, it reduces the chances of complete black-out in case of power failures.

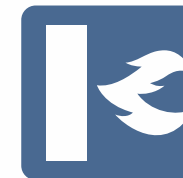
Creating Green Homes with renewable energy



- Renewable hybrid energy system with photo voltaic solar panels and wind turbines for common area lights
- Solar thermal collectors for hot water



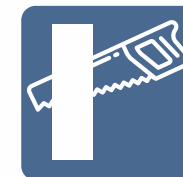
Excellent heat insulation
6 times superior to clay bricks.



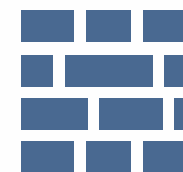
Fire resistant
more than 4 hours in 9 cm thickness.



Noise absorption
is superior than traditional clay bricks.



Easy workability
and 3 times faster than traditional masonry.



Use of AAC blocks enhances the value
of heat reduction and water resistance
as compared to conventional bricks



Live life to the fullest

Feel Bliss seeks to offer a healthy and happy living experience with lots of space for recreation and sports facilities. Here your family time will always be exciting and full of fun activities. There are plenty of options to rejuvenate your body and mind in the company of nature or having a good time with your near and dear ones.



Recreation

- Beautiful landscapes
- Party lawn with service area
- Designer club house
- Stage for events and performances
- Space for party on top terrace
- Gazebo
- Walking fountain
- Pergola with creepers
- Water body
- Walking pathways
- Jacuzzi
- Music space
- Viewing deck
- Senior citizen's area
- Sitting cluster
- Mini library



Sports

- Children's play area
- Basket ball play area
- Multi-purpose play area
- Outdoor fitness area
- Outdoor floor chess
- Air-conditioned multi-facility gym
- Yoga and aerobics zone
- Table games



Hassle-free living

Feel Bliss is thoughtfully designed with provisions for fulfilling all your necessities in future. Your concerns for safety and other requirements have already been addressed. Living at Feel Bliss will always be a proud living experience for you.



- Grand entrance and decorative lobby
- Security with safety boom barrier
- CCTV Surveillance
- Intercom facility
- Wi-fi provision in open spaces and top terrace
- Fire fighting system
- Community hall with communication facilities like computer and printer
- Creche
- Street lights
- Generator backup for common areas
- Project surrounded with lush greenery keeping environs fresh and cool



Specifications

LIVING & DINING

- Elegant main door
- Vitrified tile flooring of 600 X 600 MM
- Internal wall finish with gypsum plaster
- Internal walls and ceilings with flat finish paint
- Provision for TV and telephone points
- Adequate light points
- Powder-coated aluminum 3T sliding windows
- Windows with safety grill and mosquito nets

BEDROOM

- Vitrified tile flooring of 600 x 600 MM
- Provision for TV point in master bedroom
- 3T sliding windows with safety grill and mosquito nets
- Internal wall finish with gypsum plaster
- Internal walls and ceilings with flat finish paint
- Premium quality doors and frames
- Wooden flooring in master bedroom

KITCHEN

- Granite kitchen platform with SS sink
- Vitrified tile flooring of 600 x 600 MM
- Glazed ceramic tiles up to 2 ft above platform
- Additional electrical point for

appliances

- Additional service platform
- Dry balcony with provision of inlet and outlet along with electrical point
- Exhaust fans in kitchen

BATHROOM

- Glazed ceramic tiles up to door height
- Antiskid ceramic tile flooring
- Granite door frames
- Water proof wooden door shutter
- Premium CP fittings of Durovit / Toto / Jaquar or equivalent
- Pest prevention trap
- Exhaust fan for each bathroom
- Provision for electric geyser

FEATURES & UTILITIES

- DG power backup of 2 lights / 2 Fan points for each flat
- Concealed electrification
- Split AC in master bedroom
- Modular kitchen with overhead cabinets
- Ample parking space for residents
- Sanitation facility for driver and servants
- Stretchers lift with DG power backup
- Passenger elevator with DG power backup

TERRACE

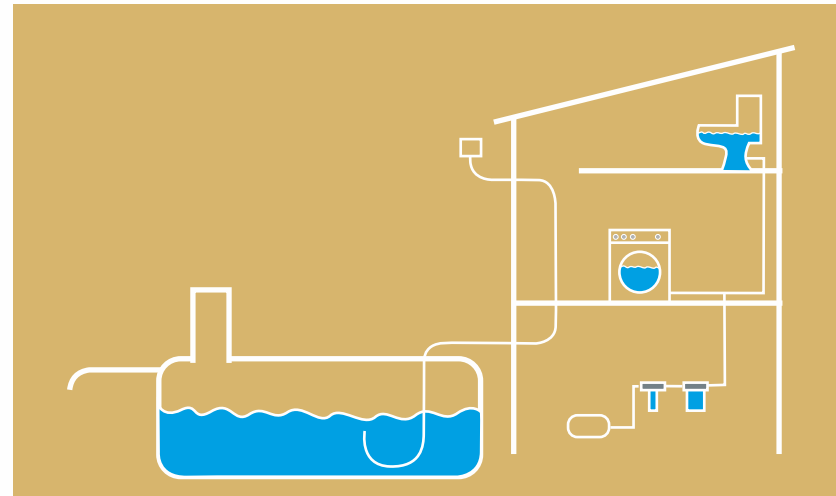
- Ceramic tiles for flooring
- Glass railing for attached terrace
- Light points
- Flower bed

Minimizing water usage

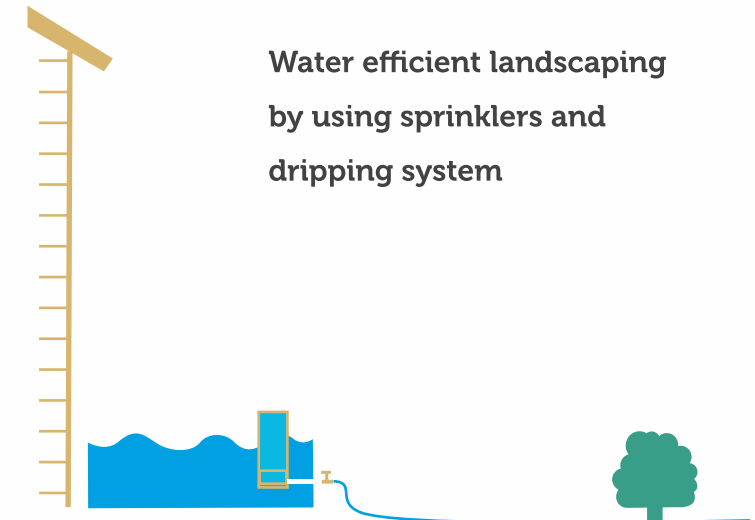
Minimizing the usage of fresh water ensures that this precious resource is available for future generations. We need to work towards water conservation to keep the rate of fresh water usage lower than the rate of its natural replacement.

Your Green Home at Feel Bliss is designed to minimize the usage of fresh water and maximize the level of ground water by conserving rainwater.

Creating Green Homes with minimal water usage



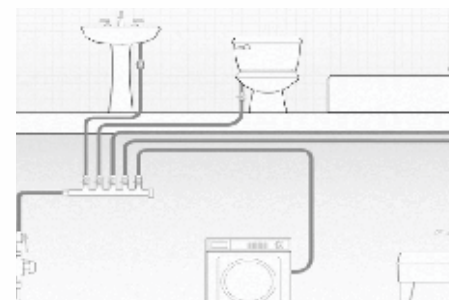
Rain water harvesting to capture maximum run off volume from roof and non-roof surfaces



Water efficient landscaping by using sprinklers and dripping system



Low flow and dual flush toilets for minimal water usage for flushing



Water efficient plumbing design



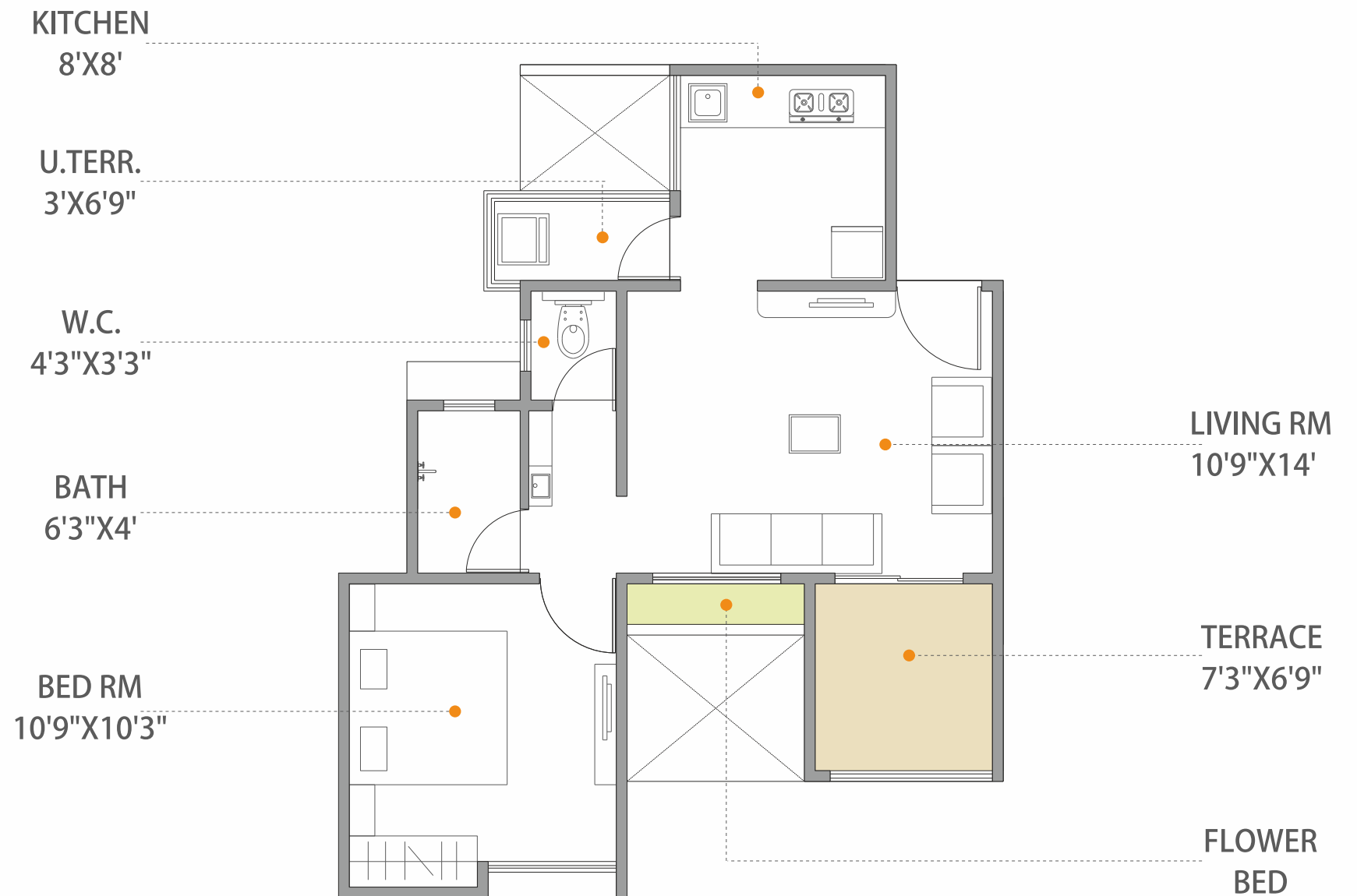
Plantation of native trees to enhance the level of ground water

1 BHK: Cut Section



1 BHK Floor Plan

Saleable Area: 669 sq. ft. to 763 sq. ft.

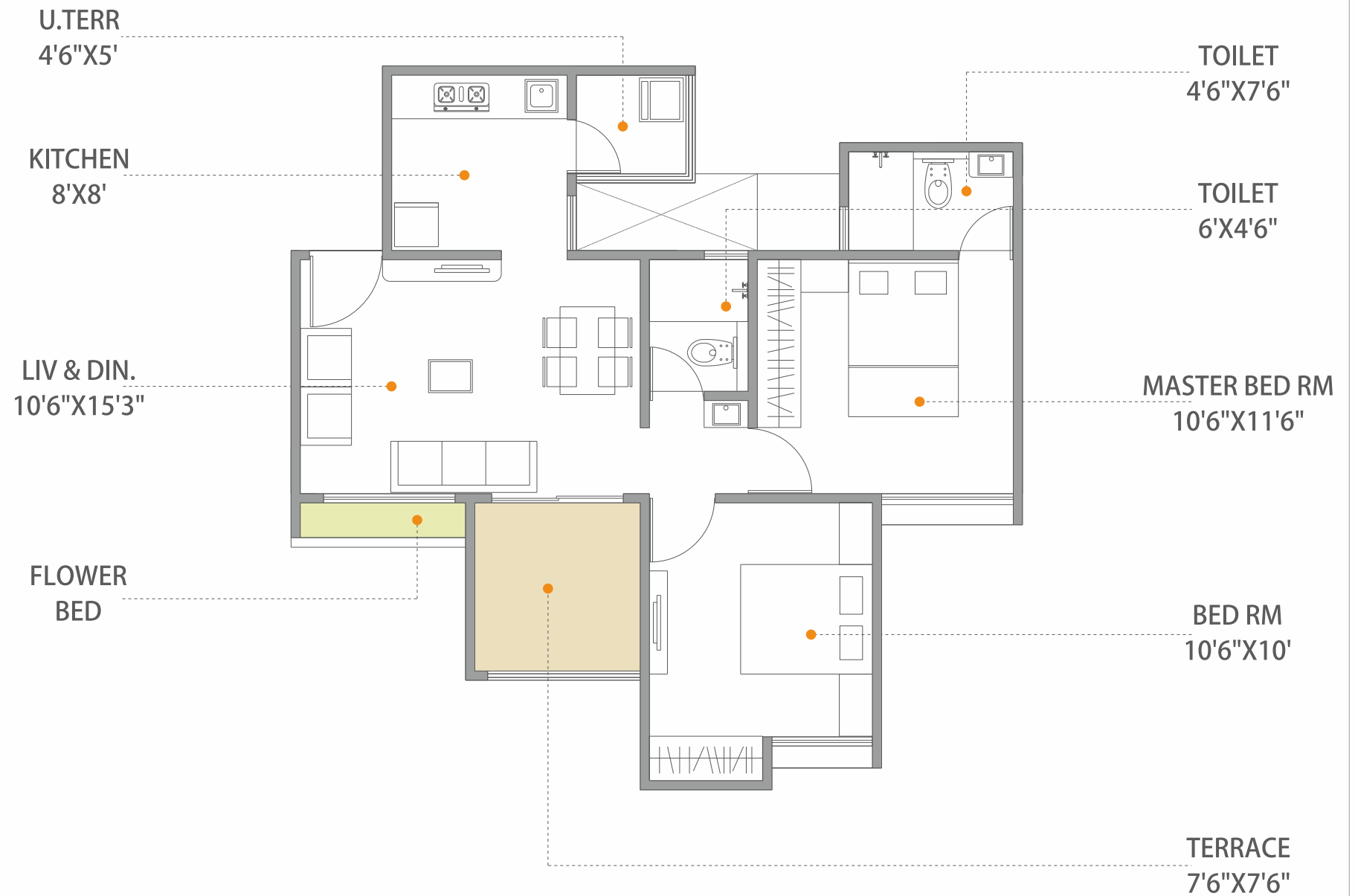


2 BHK: Cut Section



2 BHK Floor Plan

Saleable Area: 892 sq. ft. to 1231 sq. ft.

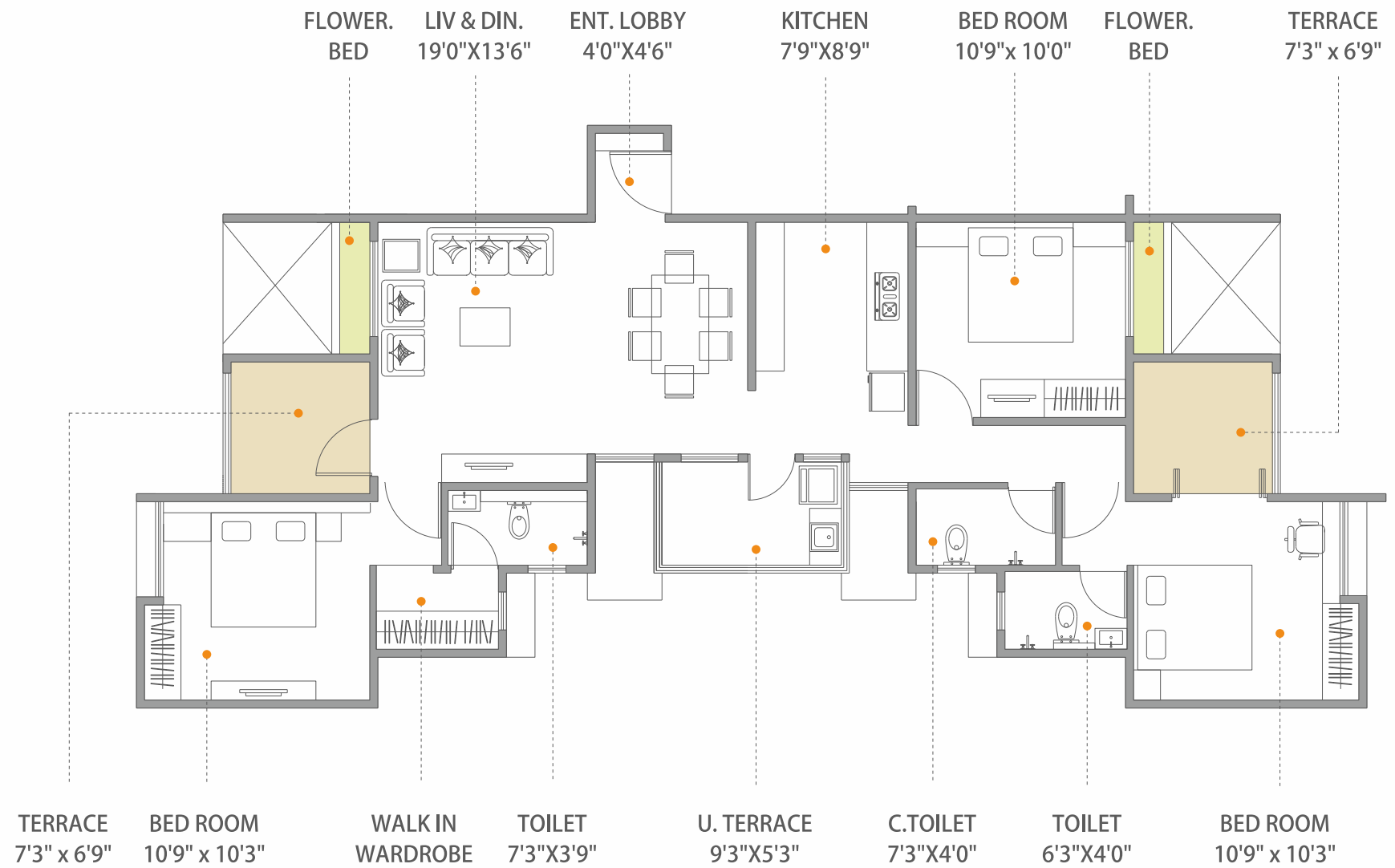


3 BHK: Cut Section



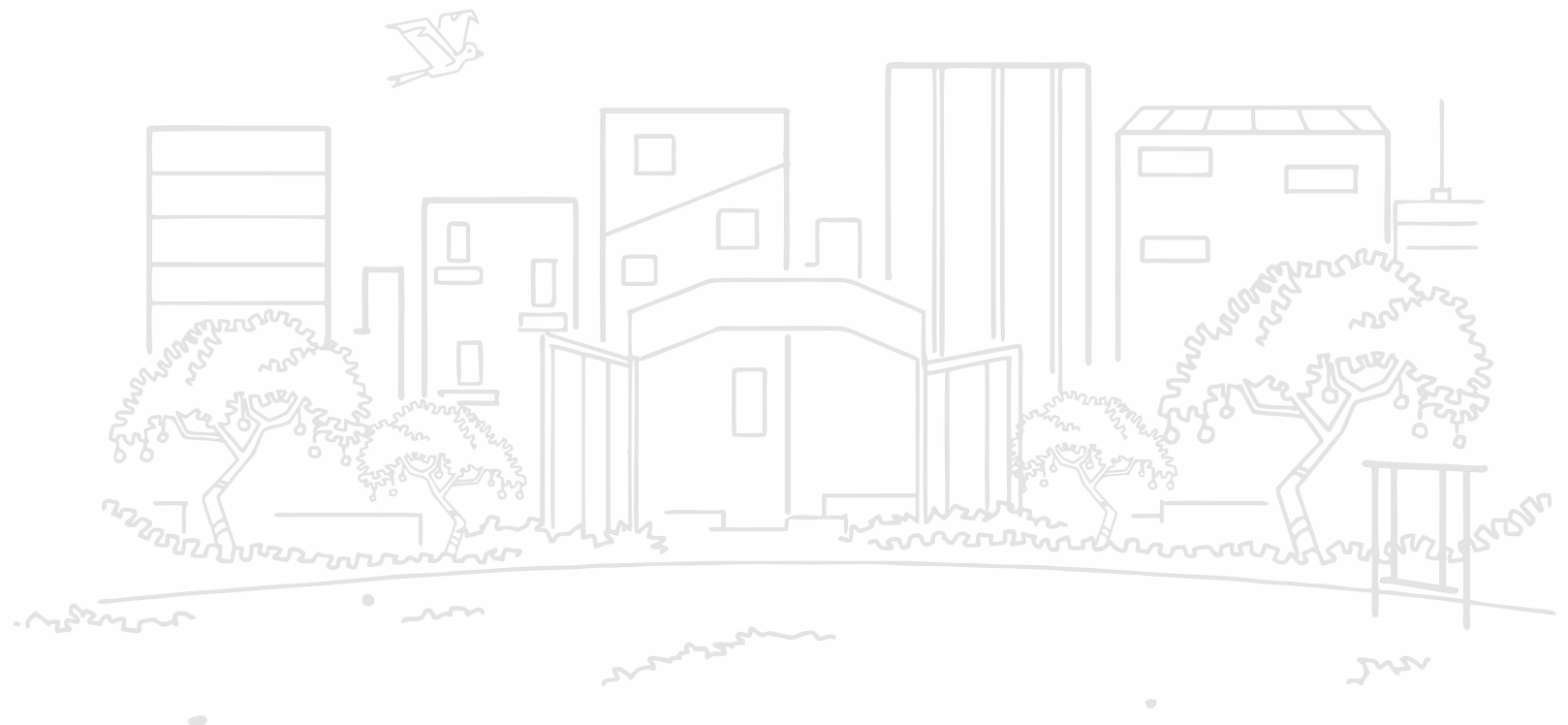
3 BHK Floor Plan

Saleable Area: 1438 sq. ft.



About Maple - Ravima

Feel Bliss is a joint venture project by Maple Shelters and Ravima Ventures. Both the names have excellent reputation in Pune's construction industry with several years of experience. With Feel Bliss, they seek to join hands and bring to the table their individual strengths to create this marvel in the residential arena.





MAPLE SHELTERS

Maple Group was founded in 1997 as Goyal Constructions. Empathizing with the struggle of countless families to own a home, Maple Group made it a mission to provide affordable housing to common man, without compromising on quality. Maple firmly believes that 'affordable' does not mean 'inferior'. This belief extends to their residential projects as well as commercial properties in Pune. Homes under the Aapla Ghar initiative as well as other residential projects by Maple all have modern amenities for a healthy and happy living experience. Every Maple home is specially designed with care and concern for needs and expectations of the residents. Giving rise to homes which the residents and the environment can be really proud of.

Over the years they went on to dot 30+ key locations in and around the city of Pune with their unique welfare housing projects as well as other residential and commercial projects.



RAVIMA VENTURES

Ravima Ventures has been in the construction industry for more than 15 years with over million sq. ft. of construction to their credit. They have several residential as well as commercial projects across some of the most prestigious locations in and around Pune.

The success of Ravima can be attributed to many aspects of their business. However, one of the most important factors is: Ravima first seeks to understand the expectations of their customers and then delivers nothing but the best, thus offering the best value for money. They are known for building long-term relationships with customers through their excellent service that goes far beyond the typical life cycle of a single project.

As a family-owned business, integrity and people are at the heart of everything they do. They are a part of the industry that can make a huge difference to the quality of people's lives and they are using this opportunity very well through their excellent quality work

A PROJECT BY



Survey No. 33, Bavdhan, Opp. PVPIT College, Near Chandni Chowk, Pune 411 021.
Ph.: 76209 47777 | email: sales@mapleravima.com | www.mapleravima.com

This brochure is purely conceptual and not a legal offering. All the plans, drawings, amenities, facilities, etc. are subject to the approval of the respective authorities and can be changed / altered / amended at the discretion of the developer and concerned authorities. Certain brand marks / logos may have been used in the brochure purely as visual aids, these have been used in good faith and should be treated as such.

