

**NESTLED IN NATURE.  
ROOTED IN PEACE.**

EXPERIENCE IT AT



SECTOR 22D, YAMUNA EXPRESSWAY







## PROJECT OVERVIEW



Escape the chaos of urban life and embrace a serene existence immersed in nature. Province *D* Olympia is a thoughtfully designed community spread across 101.203 acres (409,554.01 square meters), enveloped by 2,400+ lush trees that create a haven of fresh air, dappled sunlight, and the gentle rustle of leaves. Here, every day is a retreat, where tranquility meets modern living, and luxury is defined by harmony with nature.



At Province *D* Olympia, biophilic architecture seamlessly blends design with nature, fostering a community centred on holistic well-being. Thoughtfully planned to enhance natural light, ventilation, and lush greenery, the township offers a sustainable, eco-friendly lifestyle that nurtures a deep connection with the natural world.



Plot Sizes: 150–270 Sq. Yd.  
(125.5–225.75 Sq. Meter)



13 Acres of Lush Greens  
(52609.1 Sq. Meter)



35 Acres of Open Spaces  
(141640 Sq. Meter)



Township consists:  
School, Hospital and Retail

### KEY FEATURES



Lush Green Surroundings  
with Scenic Walkways



Expansive Green & Serene Spaces  
for Relaxation



Low-density, Open &  
Spacious Planning



Smart Water Management  
& Underground Cabling

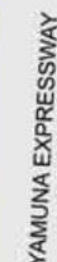


Well-planned Zones for Wellness,  
Recreation & Social Engagement



Secure, Gated Community  
with 24/7 Surveillance





1. Entry/Exit
2. Entrance Experience
3. Milk Booth
4. Gate
5. Entrance Lotus Water Feature
6. Entrance Water Cascade
7. Sloping Mound with Sculpture
8. Entrance to Group Housing
9. Township Entrance
10. Fitness Court
11. Seating Pod
12. Pebble Seating
13. Pocket Lawn
14. Badminton Court
15. Aromatic Grove
16. Cricket Pitch
17. Tea Pavilion and Mound
18. Yoga/Meditation Lawn
19. Pet Park
20. Exhibition Garden
21. Learning Garden
22. Exhibition Lawn
23. Sculpture Court
24. Banquet Lawn
25. Rose Garden and Pavilion
26. Flower Garden and Pavilion
27. Water Sculpture
28. Maze
29. Central Meadow
30. Formal Garden Lawn
31. Skating Rink
32. Senior Citizen Pavilion
33. Senior Citizen Lawn
34. Picnic Pavilion and Mound
35. Spill-out Lawn
36. Sculptural Seating
37. Hammock Garden
38. English Bridge
39. Children's Play Area
40. Children's Pavilion
41. Amphitheatre
42. Stage
43. Futsal/Multipurpose Court
44. Pickleball Court
45. Tennis Court
46. Basketball Court
47. Open Café
48. Table Tennis and Chess Corner
49. Pocket Amphitheatre
50. Pathway/Jogging Track





# WORLD-CLASS AMENITIES

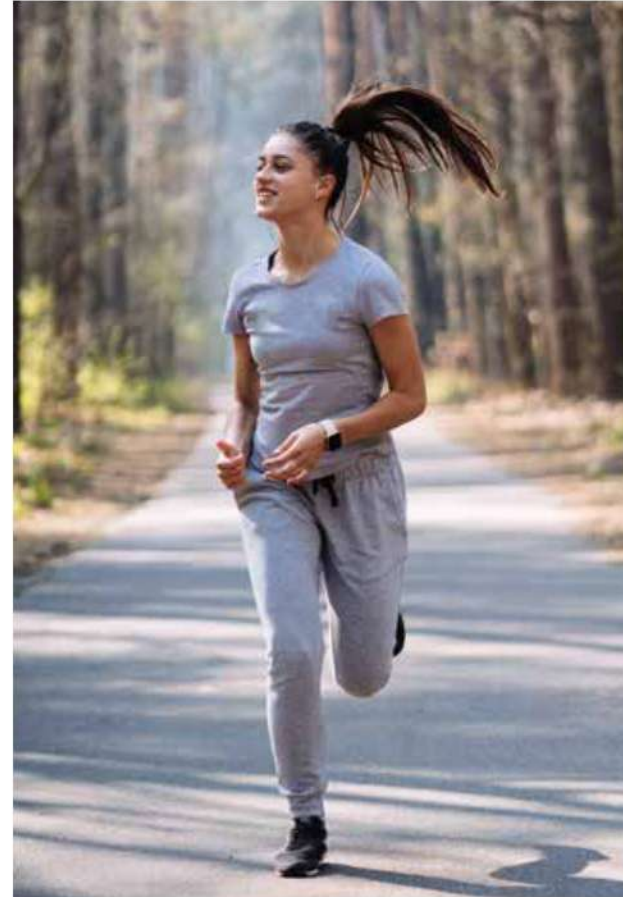
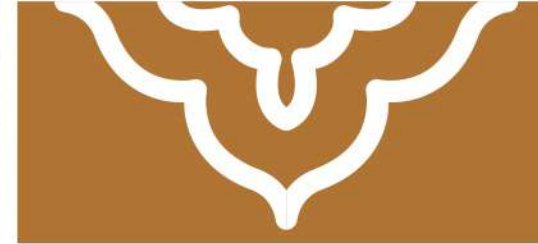
# OUTDOOR ZONE

Discover the perfect harmony of tranquility, adventure, and community at Province D Olympia, where expansive outdoor spaces beckon you to relax, explore, and forge meaningful connections.

**12+** Tranquil Nature & Wellness Spaces

**15+** Adventure & Active Outdoor Spaces

**10+** Community & Open Leisure Spaces







# WORLD-CLASS AMENITIES

# INDOOR ZONE

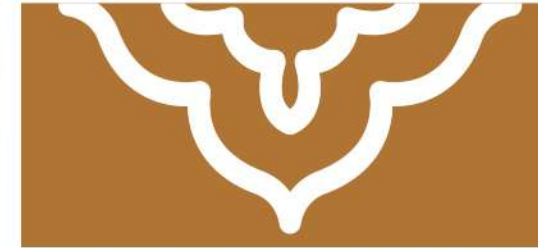
Immerse yourself in the grandeur of Province D Olympia's vast clubhouse, where luxury meets sophistication, offering an unparalleled indoor lifestyle that sets a new standard of excellence.

**1.5L Sq. Ft.\*** Grand Clubhouse  
(13,935.45 Sq. Meter)

**14+** Elite Recreation & Entertainment Spaces

**12+** Holistic Fitness & Well-Being Spaces

**10+** Social & Lifestyle Convenience Spaces

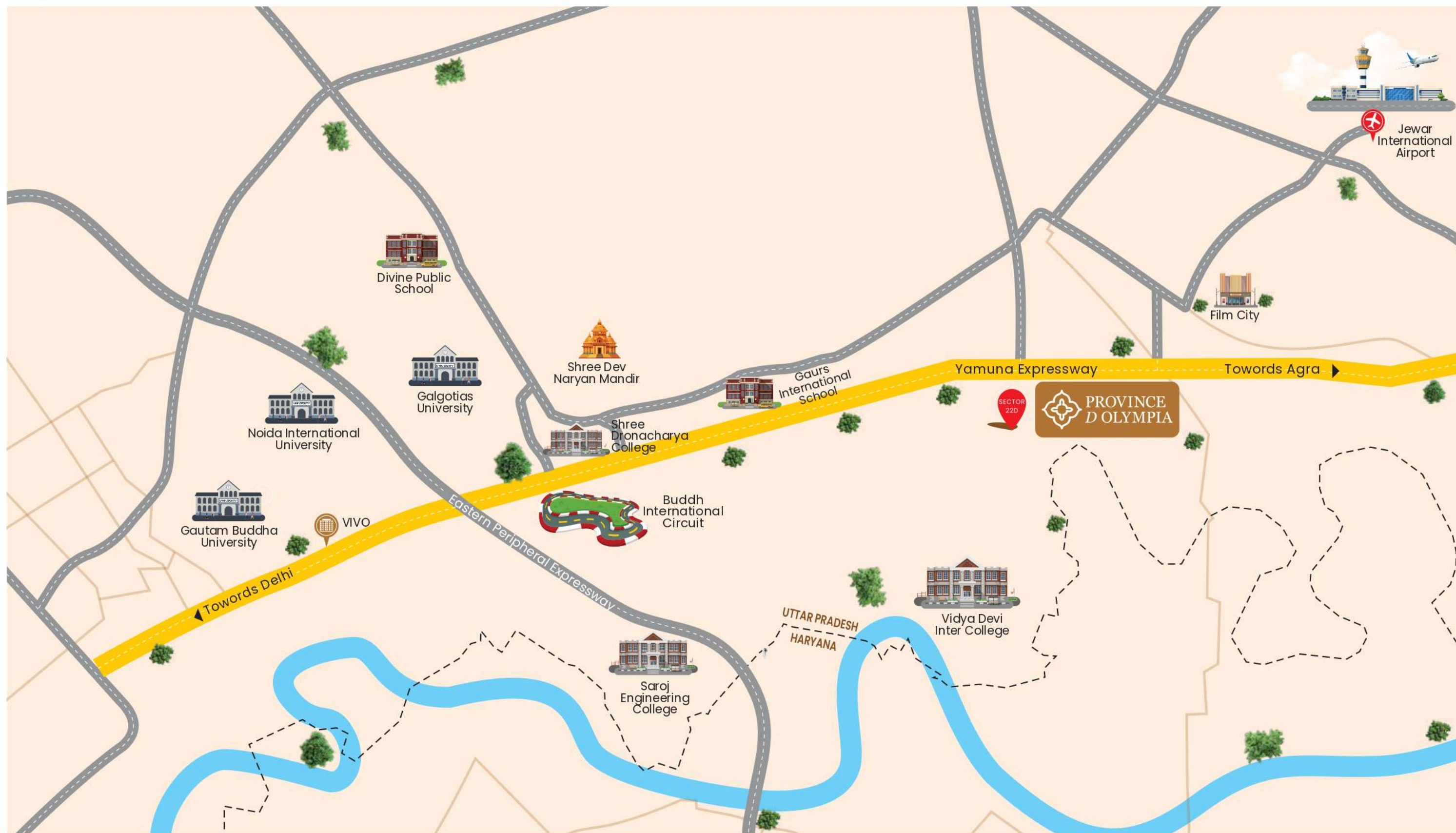


\*T&C Apply.





## ABOUT THE LOCATION



**Few min.** from upcoming Olympic City & Film City

**Close to** India's Next Tech-Hub

**15 min.** from Buddh International Circuit

**17 min.** from Noida International University

**19 min.** from Galgotias University

**20 min.** from Gautam Buddha University

**20 min.** from the Noida International Airport

**45 min.** from Delhi-Noida Direct Flyway (DND)





**ATS REALTY PRIVATE LIMITED | CIN No.: U70200DL2012PTC240824**

**Site Address:** TS - 02A, Sector 22D, Yamuna Expressway Industrial Development Area, Uttar Pradesh

**Corporate Office:** ATS Tower, 4th Floor, Plot No.16, Sec. 135, Noida 201 305

**Registered Office:** 711/92, Deepali, Nehru Place, New Delhi 110 019, India

**Disclaimer:** All information, images, visuals, drawings, plans or sketches shown in the document are only an architect's impression for representational /illustrative purposes only and not to scale. The Promoter is not liable/required to provide any interior works, furniture, items, electronics goods, amenities, accessories, etc, as displayed herein as the same do not form part of the specifications or deliverables being offered by the Promoter and the same shown herein is only for the purpose of illustrating/indicating a possible layout. Nothing contained herein intends to constitute a legal offer and does not form part of any legally binding agreement and/or commitment of any nature. The Promoter makes no representation or warranty for the accuracy or completeness of the information. It is advised to exercise discretion in relying on the information shown/provided and are requested to verify all the details, including area, amenities, services, terms of sales and payments and other relevant terms independently with the Sales Team/Promoter, have a thorough understanding of the same and take appropriate advice before concluding any decision for buying any Unit(s) in the Project. All dimensions mentioned in the drawings may vary/differ as compared to the original at the site. For amenities and specifications approved plans may be referred. Specifications given are as filed with UPRERA, Uttar Pradesh. The extent/number/variety of the equipment/appliances are indicative and subject to change at the sole discretion of the Promoter and shall be as per applicable law. Taxes and statutory charges are extra as applicable, and terms and conditions apply. ATS HomeKraft logo is being used under the Branding Agreement; however, for adherence to all compliances, "ATS Realty Private Limited" own responsibility. Project Launch Date is 21st March 2025.

**UPRERA Registration No.: UPRERAPRJ556048/03/2025 Dated: 21.03.2025 | Website: [www.up-rera.in](http://www.up-rera.in)**

Conversion scale: 1 square meter = 10.7639 square feet | 1 square foot = 0.092903 square meter | 1 square meter = 1.19599 square yards | 1 square yard = 0.83613 square meters

Name of the Bank: HDFC | Account No.: 99989292704210 | Account Name: ARPL Col Ac for Province D Olympia IFSC Code: HDFC0004394 | Swift Code: HDFCINBB | Branch: Sector 104, Noida

Promoter: ATS Realty Private Limited | Project Name: Province D Olympia | Building Plan Approval Memo No: YEA/PLNG/686/24 dated 23-09-2024 for the Project being developed 'Province D Olympia' ("Project") | Project Area: 4,09,554.0105 Square Meters (101.203 Acres) located at Sector 22D, Yamuna Expressway Industrial Development Area, Uttar Pradesh.