



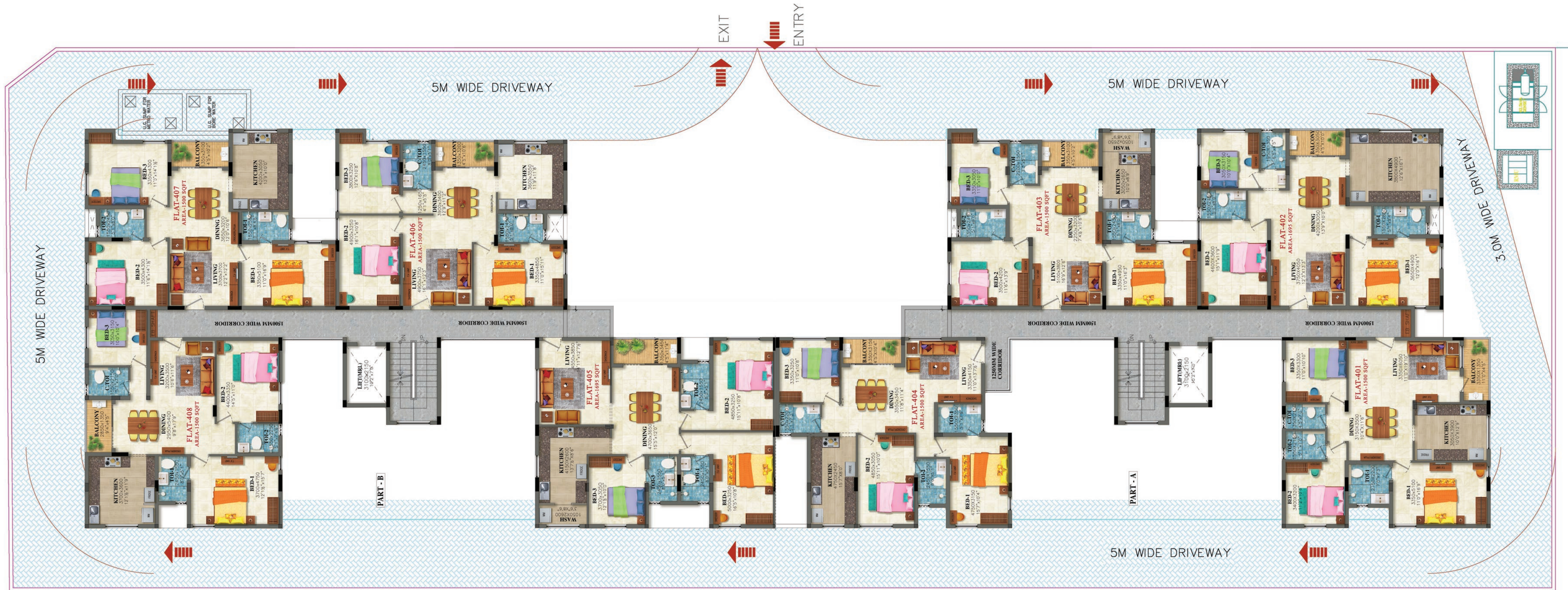
GVSPL MAHAMERU

THIRUVANMIYUR, CHENNAI

*Dazzling with brilliance*









# SPECIFICATION

## Structure

- Stilt car parking + 4 floors with Vaasthu compliance
- RCC framed structure
- Floor to floor height 10' and car parking height as per CMDA norms
- Pest control at the foundation, basement and periphery of the building
- Water proofing at all sunken levels and terrace
- Rainwater harvesting and solar energy as per statutory norms
- UG Sump / OHT with adequate capacity

## Walls and Painting

- 8" tk solid block work for exterior walls and 4" tk for interior partition walls with Gypsum / cement plastering, putty and emulsion painting.
- Weather shield emulsion paint for exteriors.

## Flooring

- 2' x 2' Vitrified tiles of Kajaria/Asian or equivalent make
- Anti - skid ceramic tiles for toilets of reputed make
- Entrance lobby and staircase will be of granite
- Interlocking pavers for setback areas with planter boxes. Granolithic flooring for car parking

## Joineries

- Main door and bed room doors of polished teak wood finished flush shutters with teak wood frames.
- Toilet doors of teak wood finish flush shutter on bed room side and paint finish on the bath room inner with teak wood frame.

## Windows and ventilator

- Reputed make UPVC with safety grills painted with enamel.

## Kitchen/Wash

- Granite cooking platform with stainless steel sink tile dado of 2'6" ht. above the platform.

## Electrical

- 3 phase connection with 1KW gen-set back up for light/fan points and refrigerator.
- MK switches and copper wire cabling of reputed make .
- 100% Gen-set backup for common area.

## Sanitary & Plumbing

- EWC's of reputed make - White colour
- Wall dado up to 7' ht
- Water supply fittings of SS finish of reputed make
- UPVC pipes for cold water and CPVC pipes for hot water lines of reputed make

## Lift

- 15 Passenger capacity lift (2 nos.) of reputed make

## Amenities

- Children's play area
- Gymnasium
- Association room in the stilt level
- Common restroom for driver at stilt level
- Maid restroom at stilt level
- Cloth drying facility in the terrace
- Party Terrace with BBQ counter, wash basin & toilet

## Around Greens Mahameru

### Schools

Sri Sankara Vidyashramam Mat. Hr. Sec. School  
Sri Ramachandra School

### Colleges

MGR Janaki College

### Hospitals

Ramachandra Medical Center

### Banks/ ATMs

Canara Bank | BOB | Syndicate Bank | State Bank of Mysore  
SBI | TMB

### Supermarkets

Nilgiris | Reliance Fresh | Pazhamudhir Cholai

### Key Distance

- Sri Ramachandra Convention Center (200 m)
- ECR (350 m)
- Arulmigu Marundeeswarar Temple (500 m)
- Thiruvanmiyur Bus Terminus (650 m)
- OMR (850 m)
- Tiruvanmiyur MRTS Terminus & Proposed Metro Terminus (1.3 KM)
- TIDEL Park (1.7 KM)
- Thiruvanmiyur Beach (1.7 KM)

# ABOUT US

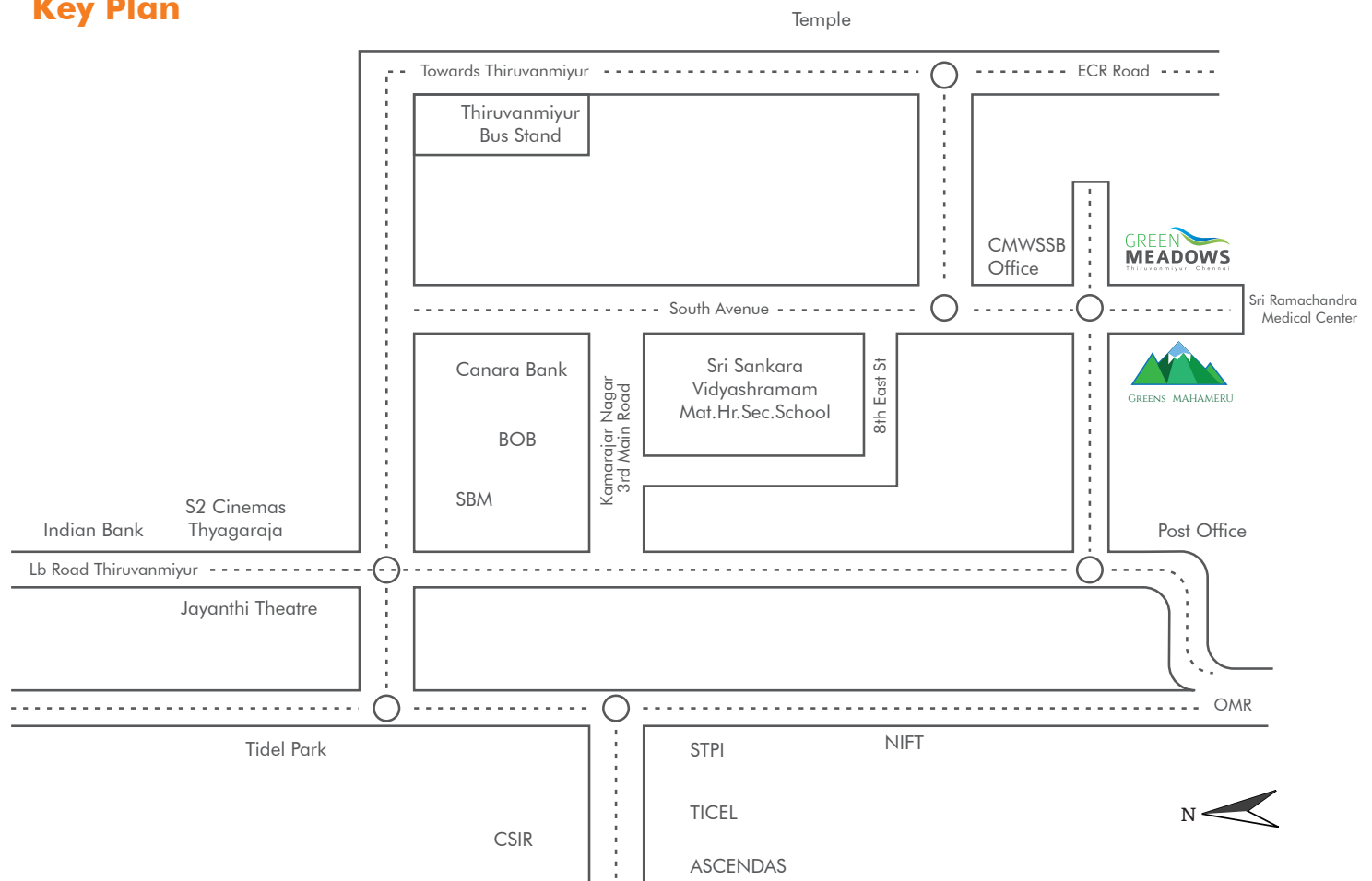
Success for Green Valleys Shelters (P) Ltd., is about making lives more comfortable and beautiful.

Constantly evolving with technology, we bring honest, innovative and functional ideas through avant-garde home designs with the sole aim of guiding you towards the best home apartment ever.

The main objective of the company is to undertake and execute engineering jobs that includes civil, electrical, plumbing, mechanical and infrastructure development works. The sole aim is to develop and promote properties for commercial and residential use, both for sale and lease.

Special attention is paid towards addressing socio-economy needs, strictly adhering to statutory norms. Utmost consideration will be given to quality and attention to smaller details to match international standards and green construction. Timely handing over of projects, back it effectively with good after sale service and ensure transparency in all our operations is our primary goal.

## Key Plan



### Registered Office

# NO. 9, BISHOP WALLERS AVENUE (EAST),  
MYLAPORE, CHENNAI - 600004  
Phone: 044 2498 6004 / 4506 6373

Mobile: +91 86086 33333 / 90870 23222  
Email: sales.chennai@greenvalleys.in

TNRERA: TN/29/Building/0218/2019

[www.greenvalleys.in](http://www.greenvalleys.in)

