

VILLA ANTHEM

Plot No. 139, Sector-50, Dronagiri, Navi Mumbai.



WELCOME TO
THE WORLD OF
ULTIMATE COMFORT
AND LUXURY.



SPACIOUS
1 & 2 BHK FLATS, SHOPS & OFFICES



VILLA
GROUP

— Bringing Trust to Realty —



DISCOVER
A JEWEL
OF A LUXURY
LIFESTYLE.

THE FEATURES

- | CLEAR TITLE CIDCO TRANSFER PLOT
- | G+7 STORIED 2 WINGS, RESIDENTIAL AND COMMERCIAL PROJECT WITH QUALITY CONSTRUCTION
- | EARTHQUAKE RESISTANCE RCC STRUCTURE
- | SPACIOUS 1, 2 BHK FLATS, SHOPS, AND OFFICES WITH NATURAL LIGHT AND VENTILATION
- | SUFFICIENT CAR PARKING ON THE GROUND FLOOR
- | DECORATIVE ENTRANCE LOBBY
- | LOANS ARE AVAILABLE AND APPROVED BY MAJOR FINANCIAL INSTITUTIONS AND BANKS
- | WELL-CONNECTED VIA ROADS, RAILWAYS, AND PUBLIC TRANSPORT IN PROXIMITY





THE PROJECT LOCATION ADVANTAGES



THE AIRPORT

- ▶ NAVI MUMBAI INTERNATIONAL AIRPORT IS JUST 15 MINUTES FROM THE PROJECT.

ATAL SETU (MTHL)

- ▶ CONNECTS DRONAGIRI TO MUMBAI IN JUST 25 MINUTES.

WATER BOAT

- ▶ FERRY SERVICES ARE AVAILABLE FROM URAN TO MUMBAI AND FROM URAN TO ALIBAUG.

BUS FACILITY

- ▶ BUS SERVICES FROM DRONAGIRI TO ALL NEIGHBOURING NODES.

LOCAL TRAIN CONNECTIVITY

- ▶ THE NERUL-ULWE-URAN LINE AND THE PANVEL-ULWE-URAN LINE STARTED.

THE HIGHWAY

- ▶ DRONAGIRI TO PANVEL, 20 MINUTES.
- ▶ PUNE-GOIA HIGHWAY, 20 MINUTES.

SEA PORT

- ▶ JNPA SEA PORT AND KARANJA SEA PORT.

URAN BEACH

- ▶ GREENERY AND BEACHES NEARBY THE PROJECT.

JNPA SEZ

- ▶ JNPA SEZ IS OPERATIONAL IN 277 H.A./684 ACRES, AN UPCOMING NMSEZ, A JOINT VENTURE INITIATIVE BETWEEN RELIANCE GROUP AND CIDCO.

SCHOOLS AND COLLEGES

- ▶ VARIOUS SCHOOLS AND COLLEGES ARE IN THE VICINITY OF THE PROJECT.

JOB OPPORTUNITY

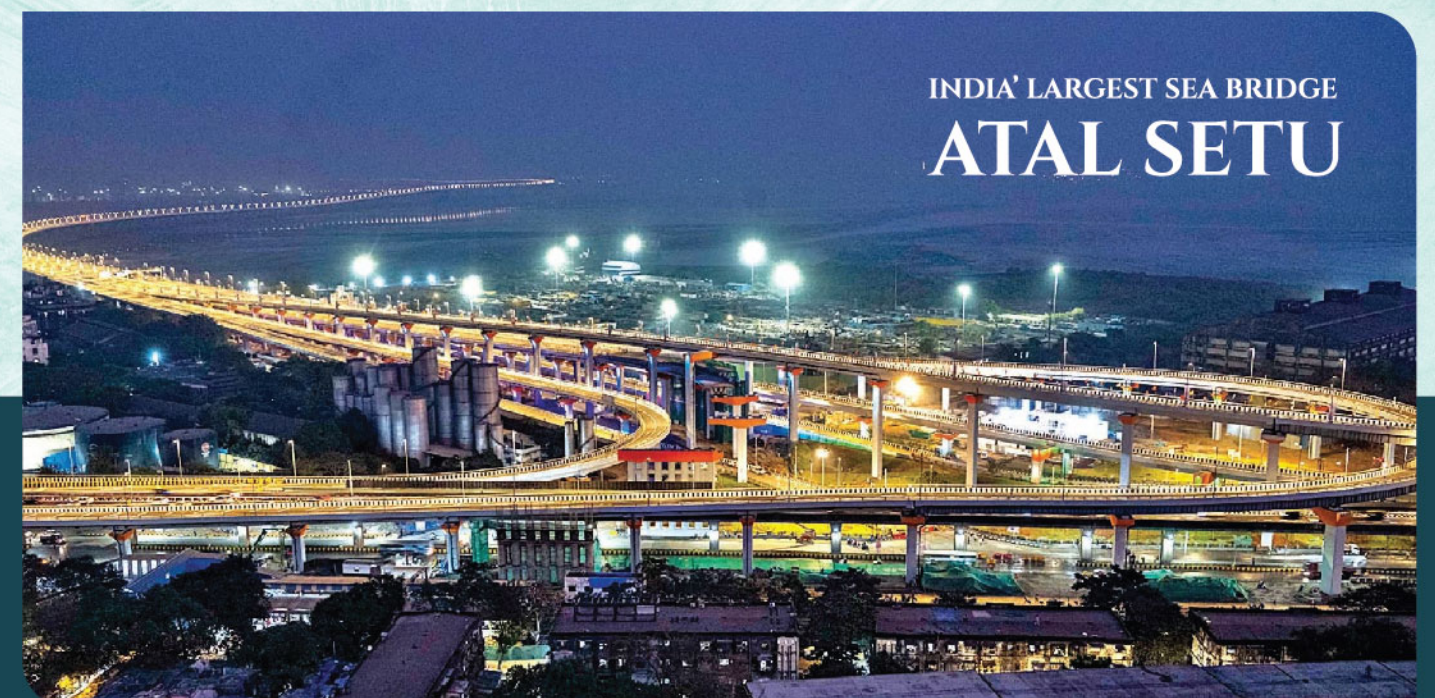
- ▶ UPCOMING INDUSTRIES AND COMPANIES THAT PROVIDE PLENTIFUL JOB OPPORTUNITIES.

SUPER MARKETS

- ▶ SUPERMARKETS, AND BANKS IN THE VICINITY OF THE PROJECT.

HEALTH CARE

- ▶ MULTISPECIALTY HOSPITAL IS LOCATED NEARBY THE PROJECT.



VILLA ANTHEM

Plot No. 139, Sector-50, Dronagiri, Navi Mumbai.



PROJECT AMENITIES

FLOORING

- VITRIFIED FLOORING IN ALL ROOMS

KITCHEN

- DESIGNER TILES UP TO THE BEAM BOTTOM ON THE ABOVE KITCHEN PLATFORM

DOORS

- WOODEN FRAMES FOR ALL DOORS
- DECORATIVE LAMINATED FLUSH DOORS OF HIGH QUALITY
- BRASS FIXTURES, FITTINGS, AND GRANITE MOULDINGS FOR BATH AND WC DOORS

WALLS AND PAINT

- PLASTIC EMULSION PAINT FOR INTERNAL WALLS
- ACRYLIC EMULSION PAINTS FOR EXTERIOR WALLS

WINDOWS

- POWDER-COATED ALUMINIUM WINDOWS WITH GRANITE FRAMES AND GLASS OF REPUTED MAKE, INCLUDING TOILETS

ELECTRIFICATION

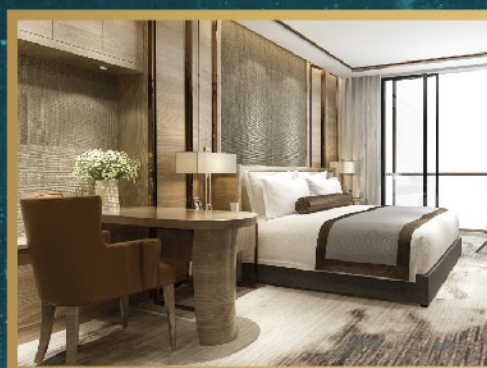
- CONCEALED COPPER WIRING AND FITTINGS OF REPUTED MAKE
- CABLE TV AND TELEPHONE POINTS IN THE LIVING ROOM

BATH AND W.C.

- DESIGNER-GLAZED TILES OF THE DADO BEAM BOTTOM
- REPLACED PREMIUM SANITARY FITTINGS AND CONCEALED PLUMBING WITH BRANDED CP FITTINGS.
- DECORATIVE MOULDED FLUSH BATH AND WC DOORS WITH GRANITE MOULDING FRAME

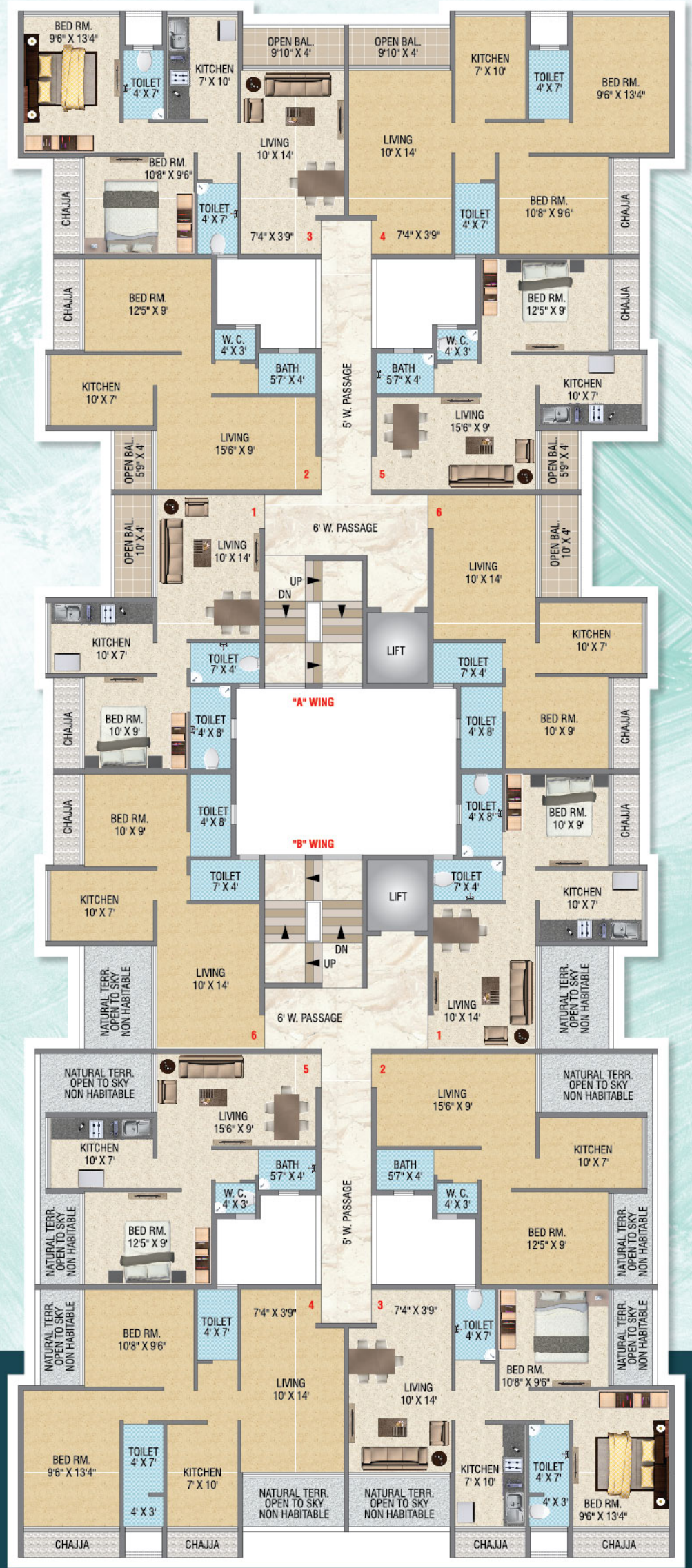
EXTERNAL AMENITIES

- THE DECORATIVE ENTRANCE ELEVATOR LOBBY WITH VITRIFIED TILES.
- SPECIAL BRICKBAT WATER PROOFING WITH MOSAIC CHIPS WITH WATER PROOFING FOR TERRACE

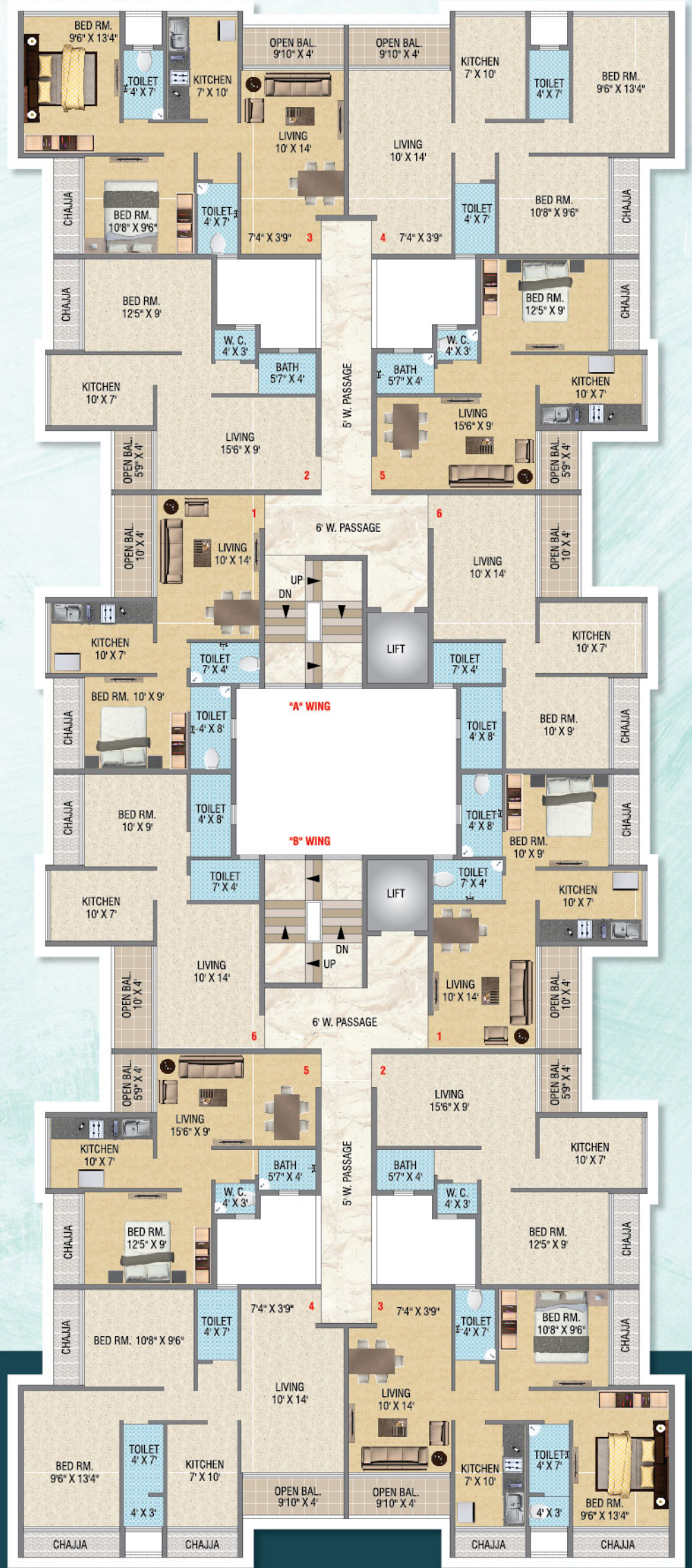


VILLA ANTHEM

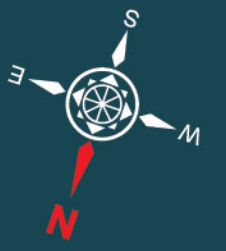
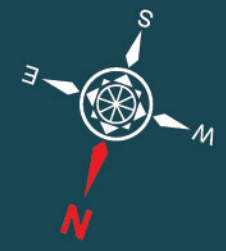
Plot No. 139, Sector-50, Dronagiri, Navi Mumbai.



2ND FLOOR PLAN



3RD TO 7TH FLOOR PLAN



DRONAGIRI LOCATION MAP



A Project By:



Office: Shop No. 18, Shiv Chambers, Plot No. 21, Sector - 11,
 CBD Belapur, Navi Mumbai-400 614
 Site: Plot No. 2, Sec-47, Dronagiri, Navi Mumbai.

SCAN RERA QR CODE
 FOR VILLA ANTHEM



Email: info@villagroup.in

www.villagroup.in



MAHA RERA REG. NO. P52000053674
<https://maharera.mahaonline.gov.in>

Note : This company profile is purely conceptual and not a legal offering. The Promoter / Architects reserve the right to add / alter any detail / specification / elevation mentioned herein. The brochure is indicative of how the furniture can be arranged in the flat. No furniture of any nature is to be supplied to the flat purchaser by the developer.