

— PRESTIGE —



RAINTREE  
*Park*

PREMIUM LIVING REDEFINED

— WHITEFIELD —

EXPERIENCE EXQUISITE LIVING





# EXTRAORDINARY LIVING

1520 exquisite abodes set in 18 towers, spanning 21 acres of breathtaking landscape, overlooking the scenic Varthur lake.

That is Prestige Raintree Park at a glance.

A range of carefully crafted 5-bedroom, 4-bedroom and 3-bedroom residences with a choice of unit layouts, all designed to deliver a comprehensively elevated living experience, like none other in the city.

A plush clubhouse, all of over 1 lakh sft, and a delectable array of luxury leisure amenities further enhance the quality of life.

And the cool green embrace of nature, which envelops you and sets up amazing views, is the icing on the cake.



THIS IMAGE IS FOR REPRESENTATIONAL PURPOSES ONLY





THIS IMAGE IS FOR REPRESENTATIONAL PURPOSES ONLY



# EXCEPTIONAL CONVENIENCE

Prestige Raintree Park's location in Prime Whitefield, right opposite Varthur Lake, gives you convenient access to all parts of Bengaluru.

IT Parks in Whitefield, ITPL, Outer Ring Road and Sarjapur Road are accessible via arterial roads, which makes commuting to work a breeze. You also enjoy excellent connectivity via Namma Metro stations at Whitefield, Hopefarm Channasandra, Sri Sathya Sai Hospital, and Pattandur Agrahara.

More than 50 Premium schools such as Inventure Academy, TISB and Greenwood High are a short drive away. Whitefield's proximity puts you within reach of some of the finest malls in the city, as well as premier restaurants and hotels. Top-notch healthcare facilities such as Manipal Hospital are also close by.





-  **PRESTIGE RAIN TREE PARK**
-  Purple Metro Line & Stations
-  Upcoming Blue Metro Line & Stations
-  Schools
-  Shopping & Retail
-  Work Spots
-  Hospitals
-  Other Landmark
-  Prestige Properties



# EXCELLENT LOCATION

## WORK HUBS

### Within 3 Kms

- Sigma Tech Park
- Brigade IRV Center

### 3 - 5 Km

- Brigade Tech Gardens
- SAP Labs
- ITPL
- Prestige Technostar
- Bagmane Solarium
- Prestige Tech Park

### 5 - 7 Km

- Cessna Business Park
- Prestige Shantiniketan

### 7 - 10 Km

- Bagmane World Technology Centre
- RMZ Eco Space
- Embassy Tech Village

## SCHOOLS & COLLEGES

### Within 3 Kms

- Glentree Academy
- Vibgyor School

### 3 - 5 Km

- Deens Academy
- Chrysalis High
- Whitefield Global School
- Cambridge International School
- CMRIT
- TCIS

### 5 - 7 Km

- RYAN International
- Global Indian International School
- MVJ College of Engineering
- Vydehi Institute of Medical Sciences & Research Centre

### 7 - 10 Km

- Greenwood High International
- TISB
- DPS Whitefield
- Gopalan PU College
- New Horizon College

## HOSPITALS

### Within 3 Kms

- Manipal Hospital
- Vydehi Super Speciality Hospital

### 3 - 5 Km

- Brookfield Multi Speciality Hospital
- Kauvery Hospital

### 7+ Km

- Aster Hospital
- Manipal Hospital
- Sakra World Hospital

## DINING

### Within 3 Kms

- Mainland China
- Oh Calcutta
- Toscano
- Barbeque Nation
- Farmhouse Kitchen & Bakery
- SMOOR Lounge
- 153 Biere Street
- The Fat Chef
- Pasta Street

### 3 - 5 Km

- Anand Sweets
- Glen's Bakehouse

### 7+ Km

- Windmills Craftworks
- NUSA Tropical Brewvilla
- The Black Pearl
- Biergarten

## HOTELS

### 3 - 5 Km

- Taj Vivanta
- Lemon Tree

### 5 - 7 Km

- Radisson Blu
- Aloft
- Fairfield by Marriott
- Sheraton Grand
- The Zuri

### 7+ Km

- Novotel
- Holiday Inn Express & Suites

## RETAIL & SHOPPING

### Within 3 Kms

- Nexus Mall, Whitefield
- Brookefield Mall

### 3 - 5 Km

- Ascendas Park Square Mall
- Inorbit Mall

### 7+ Km

- Phoenix Market City
- VR Mall
- Orion Uptown Mall



# EXPANSIVE GREENS

Prestige Raintree Park is most aptly named as it gives you the incomparable feeling of living in parkland, much like the English aristocracy.

The residential towers are flanked by extensive landscaped grounds and broad open spaces. These green zones are dotted with features that bring you closer to nature, such as a Flower Trail, several lawns, a Pet Park, a Fitness Trail and more.

Prestige Raintree Park's frontage creates a continuing visual flow of rich greenery, extending from the lake to the tower lobby and all the way up to the central landscaped podium on the first level.

The curved, sweeping skywalk is a great place to soak in the amazing views, while seamlessly connecting your home with the vibrant community.

What you will enjoy is the surreal feeling of living in nature's bower, with a wonderful aura of airy openness all around.





THIS IMAGE IS FOR REPRESENTATIONAL PURPOSES ONLY





A GREEN EXPANSE  
FOR THE EYES...



...WHEREVER  
YOU LOOK

THIS IMAGE IS FOR REPRESENTATIONAL PURPOSES ONLY





THE HOME: LUXURY.  
THE VIEW: PRICELESS!

*Artist's Impression*



# EXHILARATING PANORAMA

The towers at Prestige Raintree Park are positioned to give you undisturbed and spectacular views of the surrounding greenscape and the serene waters of the Varthur Lake.

As many as nine towers are positioned along the length of the site facing the lake. They look upon an expanse of richly landscaped green parkland, which extends all the way to the property's periphery.

The remaining towers, which are towards the rear of the property, similarly overlook lush gardens and lawns.

In the centre, situated within a 3-acre landscaped courtyard, stands the clubhouse complex on two levels. With broad, open, party lawns on the upper deck, it provides a treat for your visual senses.

The views all around are nothing short of brilliant!



An aerial view of a modern residential complex. The scene is dominated by lush greenery, including various trees and flowering plants. A central building with a flat roof and large glass windows is visible, surrounded by a paved walkway and a grassy area. Several people are seen walking on the paths, and a dog is lying on the grass. The overall atmosphere is serene and well-maintained. The text "GREAT TO WANDER. WONDERFUL TO VIEW. NATURE IS ALL AROUND YOU!" is overlaid in the center of the image.

GREAT TO WANDER.  
WONDERFUL TO  
VIEW. NATURE IS ALL  
AROUND YOU!







# OVERALL MASTER PLAN

Prestige  
**Ozone**

Future Development



**PRESTIGE**  
**TECH FOREST**





# MASTER PLAN

Prestige  
Ozone

## LEGEND

1. Main Entry / Exit
2. Drop Off
3. Service Entry
4. Guardhouse
5. Entrance Forecourt
6. Landscape Court
7. Multifunction Lawn
8. Flower Trail
9. Kids Play Area
10. Viewing Pavilion
11. Activity Lawn
12. Garden
13. Pet Park
14. Futsal Lawn
15. Outdoor Gym
16. Tennis Court
17. Basket Ball Court
18. Pool Deck
19. Lap Pool
20. Pool Side Pavilion
21. Family Pool
22. Kids Pool
23. Transformer Yard
24. Fire Driveway
25. Fire Driveway / Cycle Track
26. Cricket Pitch
27. Bbq Lawn
28. Multipurpose Court
29. Sky Walk



PRESTIGE  
TECH FOREST





# NUMBERING PLAN



LEGEND	UNIT MATRIX		AREA
<b>3BED URBANIA</b>			
	TYPE A	3B+3T	2005
	TYPE B	3B+3T	2004
	TYPE C	3B+3T	2013
	TYPE D	3B+3T	2020
<b>3BED REGALIA</b>			
	TYPE E	3B+3T+HO	2187
	TYPE F	3B+3T+HO	2225
	TYPE G	3B+3T+HO	2246
	TYPE H	3B+3T+HO	2267
	TYPE I	3B+3T+HO	2314
	TYPE J	3B+3T+HO	2401
	TYPE K	3B+3T+HO	2414
<b>4BED IMPERIA</b>			
	TYPE L	4B+3T+HO	2451
	TYPE M	4B+3T+HO	2471
	TYPE M1	4B+3T+HO	2474
	TYPE N	4B+3T+HO	2533
	TYPE N1	4B+3T+HO	2533
	TYPE P	4B+3T+HO	2588
	TYPE V	4B+3T+HO	2540
<b>4BED INFANIA</b>			
	TYPE Q	4B+4T+HO	2924
	TYPE R	4B+4T+HO	2966
	TYPE Ra	4B+4T+HO	2968
	TYPE R1	4B+4T+HO	2956
<b>5BED AURUM SUITES</b>			
	TYPE S & S(A)	4B+4T+STUDIO+HO	3503
	TYPE T & T(A)	4B+4T+STUDIO+HO	3544
	TYPE U & U(A)	4B+4T+STUDIO+HO	3692
	TYPE U1 & U1(A)	4B+4T+STUDIO+HO	3698
<b>REFUGE FLOOR</b>			
	TYPE H(r)	3B+3T	2121
	TYPE I(r)	3B+3T+HO	2244
	TYPE K(r)	3B+3T+HO	2414
	TYPE L(r)	3B+3T+HO	2226
	TYPE M(r)	4B+3T+HO	2421
	TYPE M1(r)	4B+3T+HO	2481
	TYPE N(r)	4B+3T	2353
	TYPE N1(r)	4B+3T+HO	2482
	TYPE P(r)	4B+3T	2501
	TYPE U1 (r) & U1(RA)	4B+4T+STUDIO	3540
	TYPE V(r)	4B+3T+HO	2490





# A SPECTACULAR SIGHT FROM UP ABOVE



*Artist's Impression*



# EXCLUSIVELY PRIVATE

While its location on Varthur Road gives you easy and quick access to the city's many conveniences, Prestige Raintree Park also has many features that shelter you from the noise and clamour of the outside world.

A 31m access road leading from the main road to the arrival plaza, for one, and the deep landscaped frontage along the entire length of the property, for another, work as buffers between the residential towers and the world outside.

Inside the property as well, the amenities are positioned to maximise your privacy and sense of security. The public function spaces within the central podium, for example, face out towards open-to-sky courts, both to bring a sense of scale and cut you off from the bustle.





CONNECTED TO THE CITY.  
SECLUDED FROM THE BUSTLE.

*Artist's Impression*







A modern, multi-story residential building with balconies and a lush garden area. The building features a mix of light-colored facades and dark accents. The balconies have glass railings and some have potted plants. In the foreground, there is a paved area with a large planter box containing various green plants and purple flowers. A few people are walking near a glass-walled entrance on the left. The overall atmosphere is bright and green.

ENTER A PRIVATE,  
SERENE AND GREEN  
NEW WORLD!





REVEL IN THE COOL,  
REJUVENATING AIR

*Artist's Impression*



# EXEMPLARY LUXURY

The apartments at Prestige Raintree Park give you the freedom and flexibility to live life as luxuriously as you are accustomed to.

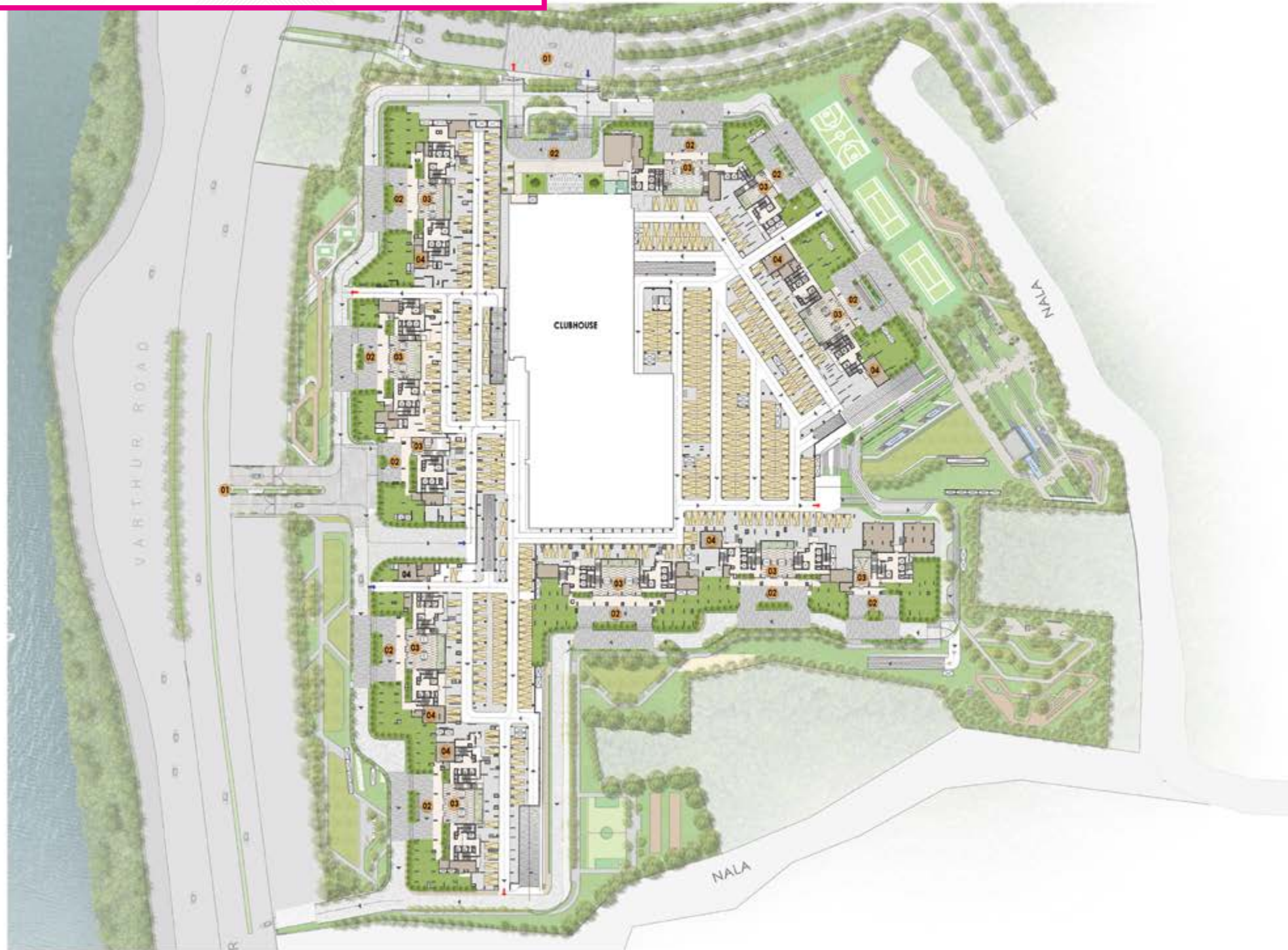
The rooms are spacious and well planned, to facilitate both lavish entertainment of guests and precious private family moments. Just the way you would like your home to be.

Every apartment has at least two external faces that feature full-length balconies, broad decks and large windows. Your home will be bright with natural light and kept cool by excellent cross ventilation.

Add to all these a few finer touches, such as premium flooring and finishes, and what you have is the perfect picture of consummate luxury.



# GROUND FLOOR PLAN



## LEGEND

- 1. Main Entry / Exit
- 2. Tower Drop Off
- 3. Entrance Lobby
- 4. Services





# FIRST FLOOR PLAN



## LEGEND

1. Entrance Lobby Below
2. Clubhouse
3. Landscaped Area

LEGEND	UNIT MATRIX		AREA
<b>3BED URBANIA</b>			
	TYPE A	3B+3T	2005
	TYPE B	3B+3T	2004
	TYPE C	3B+3T	2013
	TYPE D	3B+3T	2020
<b>3BED REGALIA</b>			
	TYPE E	3B+3T+HO	2187
	TYPE F	3B+3T+HO	2225
	TYPE G	3B+3T+HO	2246
	TYPE H	3B+3T+HO	2267
	TYPE I	3B+3T+HO	2314
	TYPE J	3B+3T+HO	2401
	TYPE K	3B+3T+HO	2414
<b>4BED IMPERIA</b>			
	TYPE L	4B+3T+HO	2451
	TYPE M	4B+3T+HO	2471
	TYPE M1	4B+3T+HO	2474
	TYPE N	4B+3T+HO	2533
	TYPE N1	4B+3T+HO	2533
	TYPE P	4B+3T+HO	2588
	TYPE V	4B+3T+HO	2540
<b>4BED INFANIA</b>			
	TYPE Q	4B+4T+HO	2924
	TYPE R	4B+4T+HO	2966
	TYPE Ra	4B+4T+HO	2968
	TYPE R1	4B+4T+HO	2956
<b>5BED AURUM SUITES</b>			
	TYPE S & S(A)	4B+4T+STUDIO+HO	3503
	TYPE T & T(A)	4B+4T+STUDIO+HO	3544
	TYPE U & U(A)	4B+4T+STUDIO+HO	3692
	TYPE U1 & U1(A)	4B+4T+STUDIO+HO	3698
<b>REFUGE FLOOR</b>			
	TYPE H(r)	3B+3T	2121
	TYPE I(r)	3B+3T+HO	2244
	TYPE K(r)	3B+3T+HO	2414
	TYPE L(r)	3B+3T+HO	2226
	TYPE M(r)	4B+3T+HO	2421
	TYPE M1(r)	4B+3T+HO	2481
	TYPE N(r)	4B+3T	2353
	TYPE N1(r)	4B+3T+HO	2482
	TYPE P(r)	4B+3T	2501
	TYPE U1 (r) & U1(RA)	4B+4T+STUDIO	3540
	TYPE V(r)	4B+3T+HO	2490





# TYPICAL FLOOR PLAN



LEGEND	UNIT MATRIX		AREA
<b>3BED URBANIA</b>			
	TYPE A	3B+3T	2005
	TYPE B	3B+3T	2004
	TYPE C	3B+3T	2013
	TYPE D	3B+3T	2020
<b>3BED REGALIA</b>			
	TYPE E	3B+3T+HO	2187
	TYPE F	3B+3T+HO	2225
	TYPE G	3B+3T+HO	2246
	TYPE H	3B+3T+HO	2267
	TYPE I	3B+3T+HO	2314
	TYPE J	3B+3T+HO	2401
	TYPE K	3B+3T+HO	2414
<b>4BED IMPERIA</b>			
	TYPE L	4B+3T+HO	2451
	TYPE M	4B+3T+HO	2471
	TYPE M1	4B+3T+HO	2474
	TYPE N	4B+3T+HO	2533
	TYPE N1	4B+3T+HO	2533
	TYPE P	4B+3T+HO	2588
	TYPE V	4B+3T+HO	2540
<b>4BED INFANIA</b>			
	TYPE Q	4B+4T+HO	2924
	TYPE R	4B+4T+HO	2966
	TYPE Ra	4B+4T+HO	2968
	TYPE R1	4B+4T+HO	2956
<b>5BED AURUM SUITES</b>			
	TYPE S & S(A)	4B+4T+STUDIO+HO	3503
	TYPE T & T(A)	4B+4T+STUDIO+HO	3544
	TYPE U & U(A)	4B+4T+STUDIO+HO	3692
	TYPE U1 & U1(A)	4B+4T+STUDIO+HO	3698
<b>REFUGE FLOOR</b>			
	TYPE H(r)	3B+3T	2121
	TYPE I(r)	3B+3T+HO	2244
	TYPE K(r)	3B+3T+HO	2414
	TYPE L(r)	3B+3T+HO	2226
	TYPE M(r)	4B+3T+HO	2421
	TYPE M1(r)	4B+3T+HO	2481
	TYPE N(r)	4B+3T	2353
	TYPE N1(r)	4B+3T+HO	2482
	TYPE P(r)	4B+3T	2501
	TYPE U1(r) & U1(RA)	4B+4T+STUDIO	3540
	TYPE V(r)	4B+3T+HO	2490



# REFUGE FLOOR PLAN



LEGEND	UNIT MATRIX		AREA
<b>3BED URBANIA</b>			
	TYPE A	3B+3T	2005
	TYPE B	3B+3T	2004
	TYPE C	3B+3T	2013
	TYPE D	3B+3T	2020
<b>3BED REGALIA</b>			
	TYPE E	3B+3T+HO	2187
	TYPE F	3B+3T+HO	2225
	TYPE G	3B+3T+HO	2246
	TYPE H	3B+3T+HO	2267
	TYPE I	3B+3T+HO	2314
	TYPE J	3B+3T+HO	2401
	TYPE K	3B+3T+HO	2414
<b>4BED IMPERIA</b>			
	TYPE L	4B+3T+HO	2451
	TYPE M	4B+3T+HO	2471
	TYPE M1	4B+3T+HO	2474
	TYPE N	4B+3T+HO	2533
	TYPE N1	4B+3T+HO	2533
	TYPE P	4B+3T+HO	2588
	TYPE V	4B+3T+HO	2540
<b>4BED INFANIA</b>			
	TYPE Q	4B+4T+HO	2924
	TYPE R	4B+4T+HO	2966
	TYPE Ra	4B+4T+HO	2968
	TYPE R1	4B+4T+HO	2956
<b>5BED AURUM SUITES</b>			
	TYPE S & S(A)	4B+4T+STUDIO+HO	3503
	TYPE T & T(A)	4B+4T+STUDIO+HO	3544
	TYPE U & U(A)	4B+4T+STUDIO+HO	3692
	TYPE U1 & U1(A)	4B+4T+STUDIO+HO	3698
<b>REFUGE FLOOR</b>			
	TYPE H(r)	3B+3T	2121
	TYPE I(r)	3B+3T+HO	2244
	TYPE K(r)	3B+3T+HO	2414
	TYPE L(r)	3B+3T+HO	2226
	TYPE M(r)	4B+3T+HO	2421
	TYPE M1(r)	4B+3T+HO	2481
	TYPE N(r)	4B+3T	2353
	TYPE N1(r)	4B+3T+HO	2482
	TYPE P(r)	4B+3T	2501
	TYPE U1 (r) & U1(RA)	4B+4T+STUDIO	3540
	TYPE V(r)	4B+3T+HO	2490





# FABULOUS COMMUNITY SPACES THAT MAKE FOR FABULOUS VIEWS



*Artist's Impression*



# BUILDING - 01

First Floor Plan

LEGEND	UNIT MATRIX		AREA
<b>3BED URBANIA</b>			
	TYPE A	3B+3T	2005
	TYPE B	3B+3T	2004
	TYPE C	3B+3T	2013
	TYPE D	3B+3T	2020
<b>3BED REGALIA</b>			
	TYPE E	3B+3T+HO	2187
	TYPE F	3B+3T+HO	2225
	TYPE G	3B+3T+HO	2246
	TYPE H	3B+3T+HO	2267
	TYPE I	3B+3T+HO	2314
	TYPE J	3B+3T+HO	2401
	TYPE K	3B+3T+HO	2414



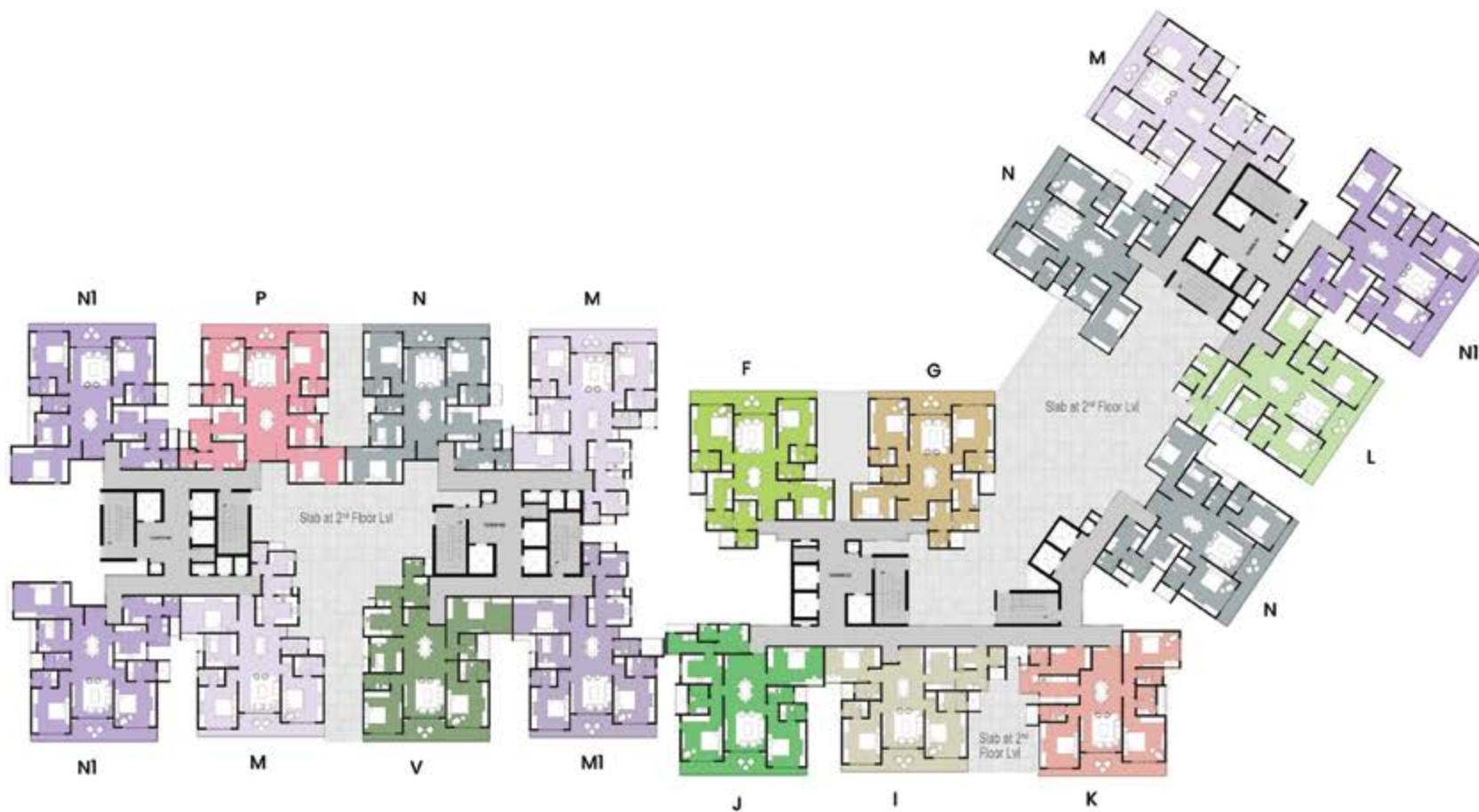
LEGEND	UNIT MATRIX		AREA
<b>4BED IMPERIA</b>			
	TYPE L	4B+3T+HO	2451
	TYPE M	4B+3T+HO	2471
	TYPE M1	4B+3T+HO	2474
	TYPE N	4B+3T+HO	2533
	TYPE N1	4B+3T+HO	2533
	TYPE P	4B+3T+HO	2588
	TYPE V	4B+3T+HO	2540
<b>4BED INFANIA</b>			
	TYPE Q	4B+4T+HO	2924
	TYPE R	4B+4T+HO	2966
	TYPE Ra	4B+4T+HO	2968
	TYPE R1	4B+4T+HO	2956
<b>5BED AURUM SUITES</b>			
	TYPE S & S(A)	4B+4T+STUDIO+HO	3503
	TYPE T & T(A)	4B+4T+STUDIO+HO	3544
	TYPE U & U(A)	4B+4T+STUDIO+HO	3692
	TYPE U1 & U1(A)	4B+4T+STUDIO+HO	3698
<b>REFUGE FLOOR</b>			
	TYPE H(r)	3B+3T	2121
	TYPE I(r)	3B+3T+HO	2244
	TYPE K(r)	3B+3T+HO	2414
	TYPE L(r)	3B+3T+HO	2226
	TYPE M(r)	4B+3T+HO	2421
	TYPE M1(r)	4B+3T+HO	2481
	TYPE N(r)	4B+3T	2353
	TYPE N1(r)	4B+3T+HO	2482
	TYPE P(r)	4B+3T	2501
	TYPE U1(r) & U1(RA)	4B+4T+STUDIO	3540
	TYPE V(r)	4B+3T+HO	2490



# BUILDING - 01

Second Floor Plan

LEGEND	UNIT MATRIX		AREA
<b>3BED URBANIA</b>			
	TYPE A	3B+3T	2005
	TYPE B	3B+3T	2004
	TYPE C	3B+3T	2013
	TYPE D	3B+3T	2020
<b>3BED REGALIA</b>			
	TYPE E	3B+3T+HO	2187
	TYPE F	3B+3T+HO	2225
	TYPE G	3B+3T+HO	2246
	TYPE H	3B+3T+HO	2267
	TYPE I	3B+3T+HO	2314
	TYPE J	3B+3T+HO	2401
	TYPE K	3B+3T+HO	2414



LEGEND	UNIT MATRIX		AREA
<b>4BED IMPERIA</b>			
	TYPE L	4B+3T+HO	2451
	TYPE M	4B+3T+HO	2471
	TYPE M1	4B+3T+HO	2474
	TYPE N	4B+3T+HO	2533
	TYPE N1	4B+3T+HO	2533
	TYPE P	4B+3T+HO	2588
	TYPE V	4B+3T+HO	2540
<b>4BED INFANIA</b>			
	TYPE Q	4B+4T+HO	2924
	TYPE R	4B+4T+HO	2966
	TYPE Ra	4B+4T+HO	2968
	TYPE R1	4B+4T+HO	2956
<b>5BED AURUM SUITES</b>			
	TYPE S & S(A)	4B+4T+STUDIO+HO	3503
	TYPE T & T(A)	4B+4T+STUDIO+HO	3544
	TYPE U & U(A)	4B+4T+STUDIO+HO	3692
	TYPE U1 & U1(A)	4B+4T+STUDIO+HO	3698
<b>REFUGE FLOOR</b>			
	TYPE H(r)	3B+3T	2121
	TYPE I(r)	3B+3T+HO	2244
	TYPE K(r)	3B+3T+HO	2414
	TYPE L(r)	3B+3T+HO	2226
	TYPE M(r)	4B+3T+HO	2421
	TYPE M1(r)	4B+3T+HO	2481
	TYPE N(r)	4B+3T	2353
	TYPE N1(r)	4B+3T+HO	2482
	TYPE P(r)	4B+3T	2501
	TYPE U1 (r) & U1(RA)	4B+4T+STUDIO	3540
	TYPE V(r)	4B+3T+HO	2490

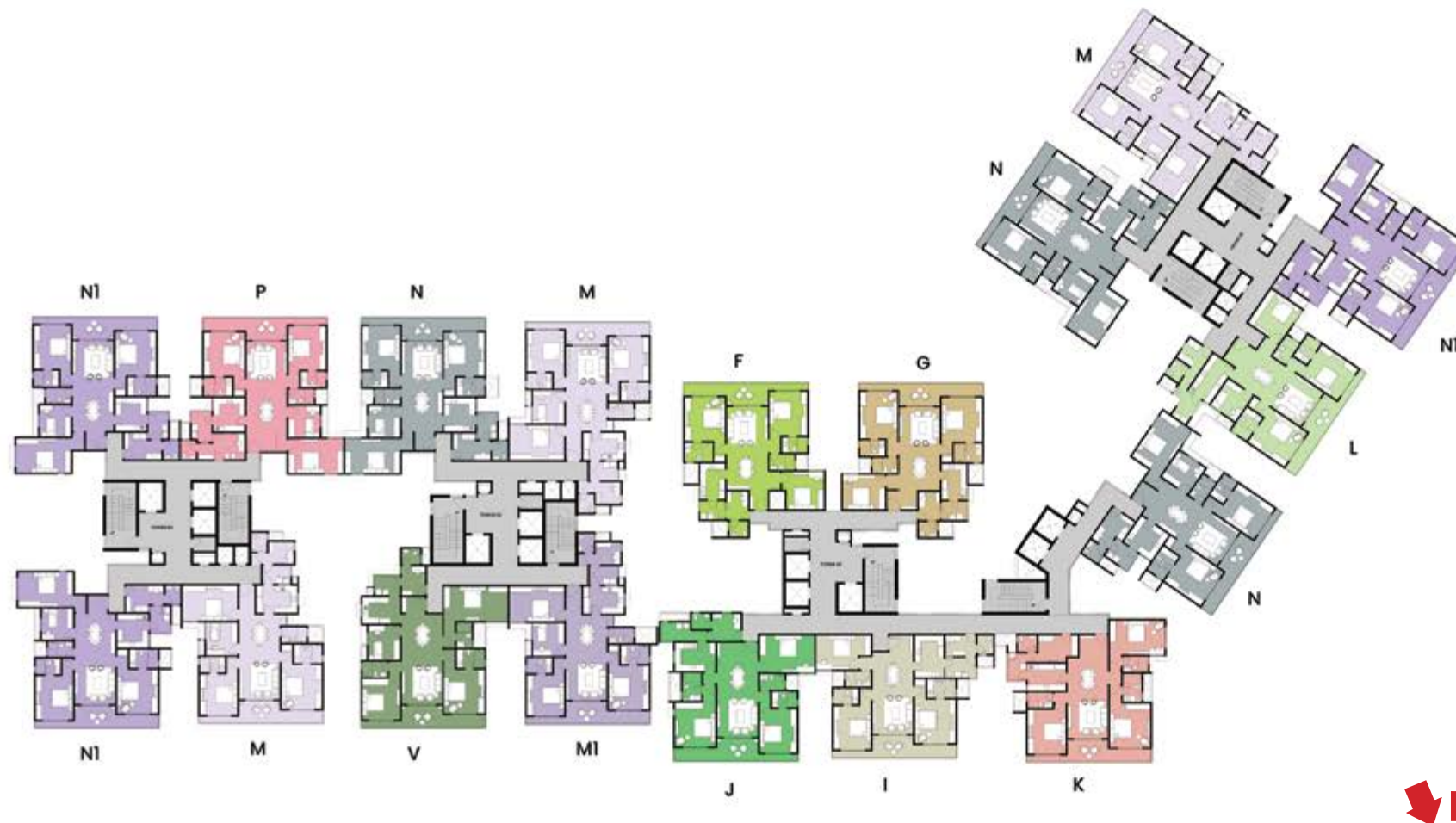




# BUILDING - 01

Typical Floor Plan

LEGEND	UNIT MATRIX		AREA
<b>3BED URBANIA</b>			
	TYPE A	3B+3T	2005
	TYPE B	3B+3T	2004
	TYPE C	3B+3T	2013
	TYPE D	3B+3T	2020
<b>3BED REGALIA</b>			
	TYPE E	3B+3T+HO	2187
	TYPE F	3B+3T+HO	2225
	TYPE G	3B+3T+HO	2246
	TYPE H	3B+3T+HO	2267
	TYPE I	3B+3T+HO	2314
	TYPE J	3B+3T+HO	2401
	TYPE K	3B+3T+HO	2414



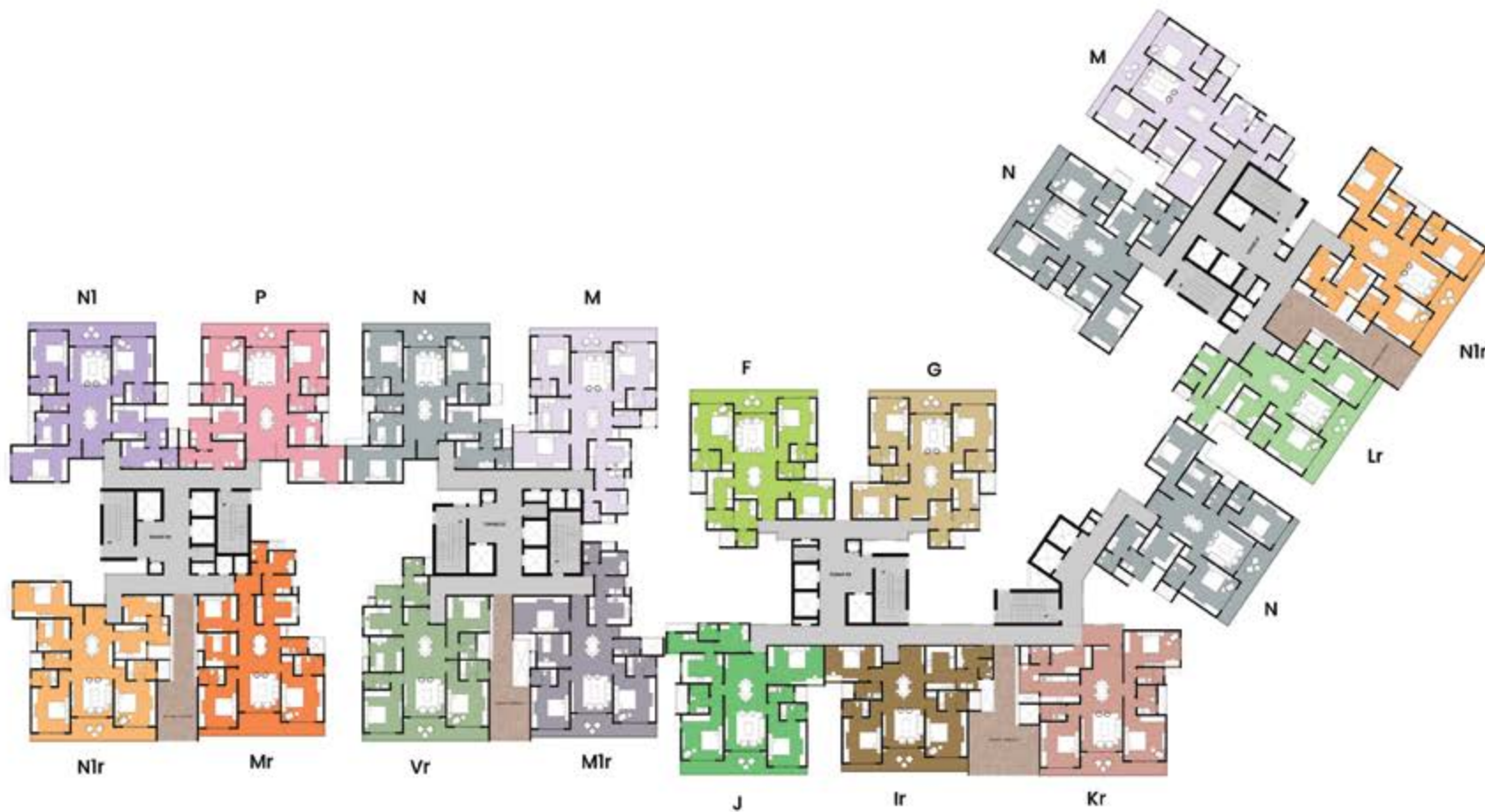
LEGEND	UNIT MATRIX		AREA
<b>4BED IMPERIA</b>			
	TYPE L	4B+3T+HO	2451
	TYPE M	4B+3T+HO	2471
	TYPE M1	4B+3T+HO	2474
	TYPE N	4B+3T+HO	2533
	TYPE N1	4B+3T+HO	2533
	TYPE P	4B+3T+HO	2588
	TYPE V	4B+3T+HO	2540
<b>4BED INFANIA</b>			
	TYPE Q	4B+4T+HO	2924
	TYPE R	4B+4T+HO	2966
	TYPE Ra	4B+4T+HO	2968
	TYPE R1	4B+4T+HO	2956
<b>5BED AURUM SUITES</b>			
	TYPE S & S(A)	4B+4T+STUDIO+HO	3503
	TYPE T & T(A)	4B+4T+STUDIO+HO	3544
	TYPE U & U(A)	4B+4T+STUDIO+HO	3692
	TYPE U1 & U1(A)	4B+4T+STUDIO+HO	3698
<b>REFUGE FLOOR</b>			
	TYPE H(r)	3B+3T	2121
	TYPE I(r)	3B+3T+HO	2244
	TYPE K(r)	3B+3T+HO	2414
	TYPE L(r)	3B+3T+HO	2226
	TYPE M(r)	4B+3T+HO	2421
	TYPE M1(r)	4B+3T+HO	2481
	TYPE N(r)	4B+3T	2353
	TYPE N1(r)	4B+3T+HO	2482
	TYPE P(r)	4B+3T	2501
	TYPE U1 (r) & U1(RA)	4B+4T+STUDIO	3540
	TYPE V(r)	4B+3T+HO	2490



# BUILDING - 01

Refuge Floor Plan

LEGEND	UNIT MATRIX		AREA
<b>3BED URBANIA</b>			
	TYPE A	3B+3T	2005
	TYPE B	3B+3T	2004
	TYPE C	3B+3T	2013
	TYPE D	3B+3T	2020
<b>3BED REGALIA</b>			
	TYPE E	3B+3T+HO	2187
	TYPE F	3B+3T+HO	2225
	TYPE G	3B+3T+HO	2246
	TYPE H	3B+3T+HO	2267
	TYPE I	3B+3T+HO	2314
	TYPE J	3B+3T+HO	2401
	TYPE K	3B+3T+HO	2414



LEGEND	UNIT MATRIX		AREA
<b>4BED IMPERIA</b>			
	TYPE L	4B+3T+HO	2451
	TYPE M	4B+3T+HO	2471
	TYPE M1	4B+3T+HO	2474
	TYPE N	4B+3T+HO	2533
	TYPE N1	4B+3T+HO	2533
	TYPE P	4B+3T+HO	2588
	TYPE V	4B+3T+HO	2540
<b>4BED INFINIA</b>			
	TYPE Q	4B+4T+HO	2924
	TYPE R	4B+4T+HO	2966
	TYPE Ra	4B+4T+HO	2968
	TYPE R1	4B+4T+HO	2956
<b>5BED AURUM SUITES</b>			
	TYPE S & S(A)	4B+4T+STUDIO+HO	3503
	TYPE T & T(A)	4B+4T+STUDIO+HO	3544
	TYPE U & U(A)	4B+4T+STUDIO+HO	3692
	TYPE U1 & U1(A)	4B+4T+STUDIO+HO	3698
<b>REFUGE FLOOR</b>			
	TYPE H(r)	3B+3T	2121
	TYPE I(r)	3B+3T+HO	2244
	TYPE K(r)	3B+3T+HO	2414
	TYPE L(r)	3B+3T+HO	2226
	TYPE M(r)	4B+3T+HO	2421
	TYPE M1(r)	4B+3T+HO	2481
	TYPE N(r)	4B+3T	2353
	TYPE N1(r)	4B+3T+HO	2482
	TYPE P(r)	4B+3T	2501
	TYPE U1 (r) & U1(RA)	4B+4T+STUDIO	3540
	TYPE V(r)	4B+3T+HO	2490





# BUILDING - 01

Tower - 01

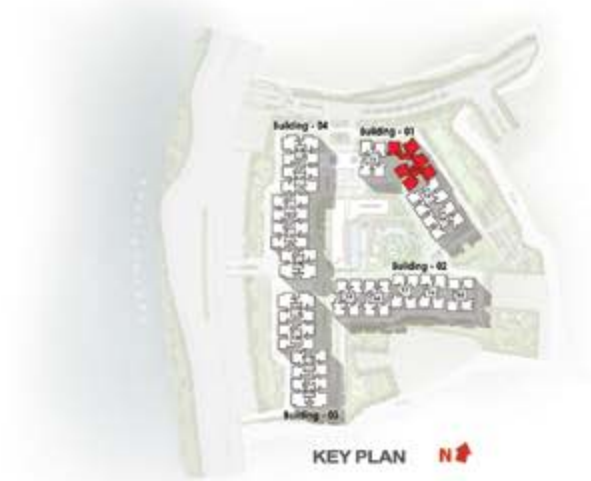


TOWER 1		
UNIT TYPE	UNIT No.	AREA
UNIT - N	01	2533 SFT
UNIT - M	02	2471 SFT
UNIT - N1	03	2533 SFT
UNIT - L	04	2451 SFT



# BUILDING - 01

Tower - 02



TOWER 2		
UNIT TYPE	UNIT No.	AREA
UNIT - F	01	2225 SFT
UNIT - G	02	2246 SFT
UNIT - N	03	2533 SFT
UNIT - K	04	2414 SFT
UNIT - I	05	2314 SFT
UNIT - J	06	2401 SFT



# BUILDING - 01

Tower - 03

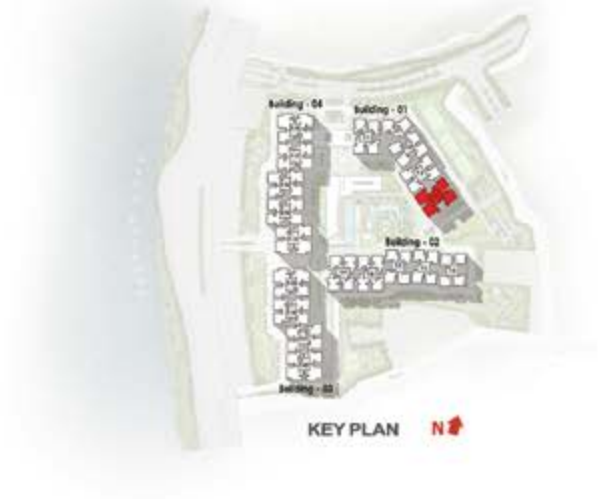


TOWER 3		
UNIT TYPE	UNIT No.	AREA
UNIT - M1	01	2474 SFT
UNIT - V	02	2540 SFT
UNIT - N	03	2533 SFT
UNIT - M	04	2471 SFT



# BUILDING - 01

Tower - 04



TOWER 4		
UNIT TYPE	UNIT No.	AREA
UNIT - M	01	2471 SFT
UNIT - N1	02, 03	2533 SFT
UNIT - P	04	2588 SFT



**IMPRESSIVE & IMPOSING  
AT FIRST SIGHT!**



*Artist's Impression*



# BUILDING - 02

## First Floor Plan

LEGEND	UNIT MATRIX		AREA
<b>3BED URBANIA</b>			
	TYPE A	3B+3T	2005
	TYPE B	3B+3T	2004
	TYPE C	3B+3T	2013
	TYPE D	3B+3T	2020
<b>3BED REGALIA</b>			
	TYPE E	3B+3T+HO	2187
	TYPE F	3B+3T+HO	2225
	TYPE G	3B+3T+HO	2246
	TYPE H	3B+3T+HO	2267
	TYPE I	3B+3T+HO	2314
	TYPE J	3B+3T+HO	2401
	TYPE K	3B+3T+HO	2414



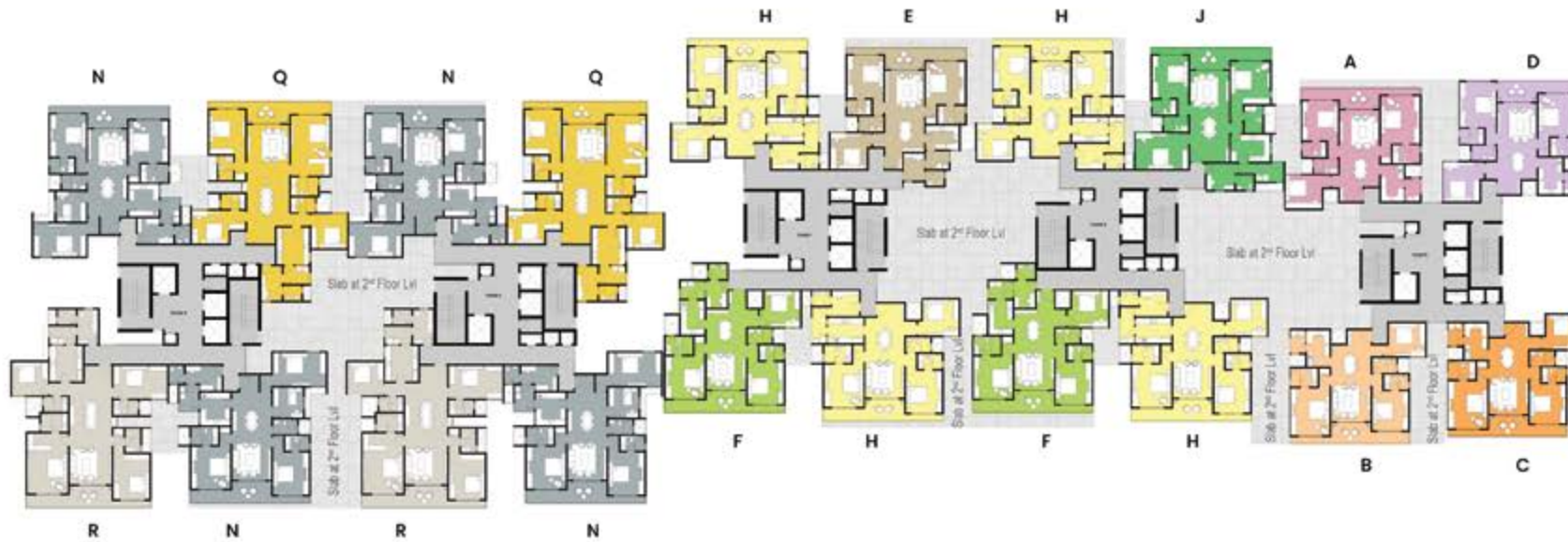
LEGEND	UNIT MATRIX		AREA
<b>4BED IMPERIA</b>			
	TYPE L	4B+3T+HO	2451
	TYPE M	4B+3T+HO	2471
	TYPE M1	4B+3T+HO	2474
	TYPE N	4B+3T+HO	2533
	TYPE N1	4B+3T+HO	2533
	TYPE P	4B+3T+HO	2588
	TYPE V	4B+3T+HO	2540
<b>4BED INFINIA</b>			
	TYPE Q	4B+4T+HO	2924
	TYPE R	4B+4T+HO	2966
	TYPE Ra	4B+4T+HO	2968
	TYPE R1	4B+4T+HO	2956
<b>5BED AURUM SUITES</b>			
	TYPE S & S(A)	4B+4T+STUDIO+HO	3503
	TYPE T & T(A)	4B+4T+STUDIO+HO	3544
	TYPE U & U(A)	4B+4T+STUDIO+HO	3692
	TYPE U1 & U1(A)	4B+4T+STUDIO+HO	3698
<b>REFUGE FLOOR</b>			
	TYPE H(r)	3B+3T	2121
	TYPE I(r)	3B+3T+HO	2244
	TYPE K(r)	3B+3T+HO	2414
	TYPE L(r)	3B+3T+HO	2226
	TYPE M(r)	4B+3T+HO	2421
	TYPE M1(r)	4B+3T+HO	2481
	TYPE N(r)	4B+3T	2353
	TYPE N1(r)	4B+3T+HO	2482
	TYPE P(r)	4B+3T	2501
	TYPE U1 (r) & U1(RA)	4B+4T+STUDIO	3540
	TYPE V(r)	4B+3T+HO	2490



# BUILDING - 02

## Second Floor Plan

LEGEND	UNIT MATRIX		AREA
<b>3BED URBANIA</b>			
	TYPE A	3B+3T	2005
	TYPE B	3B+3T	2004
	TYPE C	3B+3T	2013
	TYPE D	3B+3T	2020
<b>3BED REGALIA</b>			
	TYPE E	3B+3T+HO	2187
	TYPE F	3B+3T+HO	2225
	TYPE G	3B+3T+HO	2246
	TYPE H	3B+3T+HO	2267
	TYPE I	3B+3T+HO	2314
	TYPE J	3B+3T+HO	2401
	TYPE K	3B+3T+HO	2414



LEGEND	UNIT MATRIX		AREA
<b>4BED IMPERIA</b>			
	TYPE L	4B+3T+HO	2451
	TYPE M	4B+3T+HO	2471
	TYPE M1	4B+3T+HO	2474
	TYPE N	4B+3T+HO	2533
	TYPE N1	4B+3T+HO	2533
	TYPE P	4B+3T+HO	2588
	TYPE V	4B+3T+HO	2540
<b>4BED INFANIA</b>			
	TYPE Q	4B+4T+HO	2924
	TYPE R	4B+4T+HO	2966
	TYPE Ra	4B+4T+HO	2968
	TYPE R1	4B+4T+HO	2956
<b>5BED AURUM SUITES</b>			
	TYPE S & S(A)	4B+4T+STUDIO+HO	3503
	TYPE T & T(A)	4B+4T+STUDIO+HO	3544
	TYPE U & U(A)	4B+4T+STUDIO+HO	3692
	TYPE U1 & U1(A)	4B+4T+STUDIO+HO	3698
<b>REFUGE FLOOR</b>			
	TYPE H(r)	3B+3T	2121
	TYPE I(r)	3B+3T+HO	2244
	TYPE K(r)	3B+3T+HO	2414
	TYPE L(r)	3B+3T+HO	2226
	TYPE M(r)	4B+3T+HO	2421
	TYPE M1(r)	4B+3T+HO	2481
	TYPE N(r)	4B+3T	2353
	TYPE N1(r)	4B+3T+HO	2482
	TYPE P(r)	4B+3T	2501
	TYPE U1 (r) & U1(RA)	4B+4T+STUDIO	3540
	TYPE V(r)	4B+3T+HO	2490

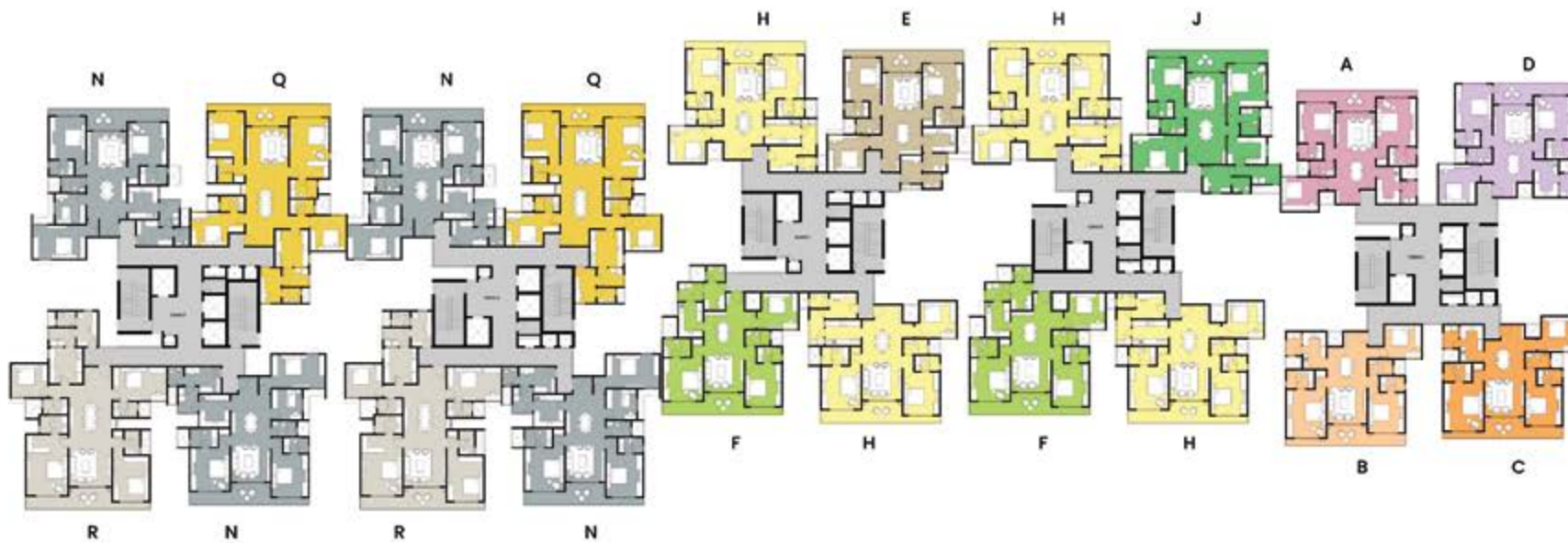




# BUILDING - 02

Typical Floor Plan

LEGEND	UNIT MATRIX		AREA
<b>3BED URBANIA</b>			
	TYPE A	3B+3T	2005
	TYPE B	3B+3T	2004
	TYPE C	3B+3T	2013
	TYPE D	3B+3T	2020
<b>3BED REGALIA</b>			
	TYPE E	3B+3T+HO	2187
	TYPE F	3B+3T+HO	2225
	TYPE G	3B+3T+HO	2246
	TYPE H	3B+3T+HO	2267
	TYPE I	3B+3T+HO	2314
	TYPE J	3B+3T+HO	2401
	TYPE K	3B+3T+HO	2414



LEGEND	UNIT MATRIX		AREA
<b>4BED IMPERIA</b>			
	TYPE L	4B+3T+HO	2451
	TYPE M	4B+3T+HO	2471
	TYPE M1	4B+3T+HO	2474
	TYPE N	4B+3T+HO	2533
	TYPE N1	4B+3T+HO	2533
	TYPE P	4B+3T+HO	2588
	TYPE V	4B+3T+HO	2540
<b>4BED INFANIA</b>			
	TYPE Q	4B+4T+HO	2924
	TYPE R	4B+4T+HO	2966
	TYPE Ra	4B+4T+HO	2968
	TYPE R1	4B+4T+HO	2956
<b>5BED AURUM SUITES</b>			
	TYPE S & S(A)	4B+4T+STUDIO+HO	3503
	TYPE T & T(A)	4B+4T+STUDIO+HO	3544
	TYPE U & U(A)	4B+4T+STUDIO+HO	3692
	TYPE U1 & U1(A)	4B+4T+STUDIO+HO	3698
<b>REFUGE FLOOR</b>			
	TYPE H(r)	3B+3T	2121
	TYPE I(r)	3B+3T+HO	2244
	TYPE K(r)	3B+3T+HO	2414
	TYPE L(r)	3B+3T+HO	2226
	TYPE M(r)	4B+3T+HO	2421
	TYPE M1(r)	4B+3T+HO	2481
	TYPE N(r)	4B+3T	2353
	TYPE N1(r)	4B+3T+HO	2482
	TYPE P(r)	4B+3T	2501
	TYPE U1 (r) & U1(RA)	4B+4T+STUDIO	3540
	TYPE V(r)	4B+3T+HO	2490

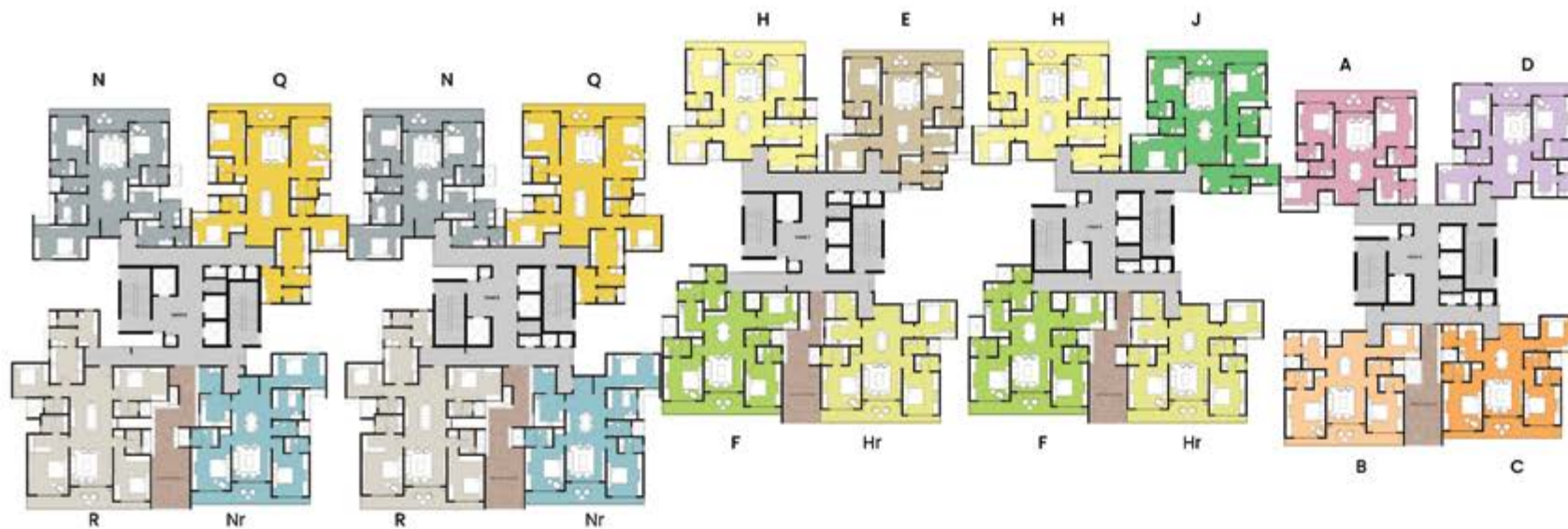
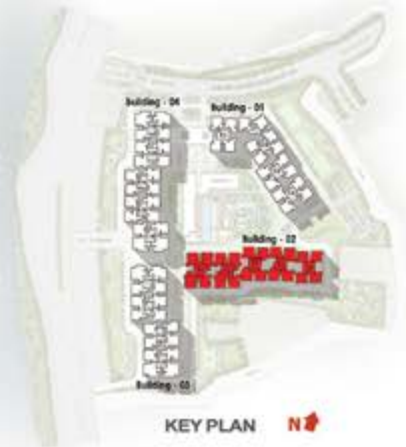




# BUILDING - 02

## Refuge Floor Plan

LEGEND	UNIT MATRIX		AREA
<b>3BED URBANIA</b>			
	TYPE A	3B+3T	2005
	TYPE B	3B+3T	2004
	TYPE C	3B+3T	2013
	TYPE D	3B+3T	2020
<b>3BED REGALIA</b>			
	TYPE E	3B+3T+HO	2187
	TYPE F	3B+3T+HO	2225
	TYPE G	3B+3T+HO	2246
	TYPE H	3B+3T+HO	2267
	TYPE I	3B+3T+HO	2314
	TYPE J	3B+3T+HO	2401
	TYPE K	3B+3T+HO	2414



LEGEND	UNIT MATRIX		AREA
<b>4BED IMPERIA</b>			
	TYPE L	4B+3T+HO	2451
	TYPE M	4B+3T+HO	2471
	TYPE M1	4B+3T+HO	2474
	TYPE N	4B+3T+HO	2533
	TYPE N1	4B+3T+HO	2533
	TYPE P	4B+3T+HO	2588
	TYPE V	4B+3T+HO	2540
<b>4BED INFANIA</b>			
	TYPE Q	4B+4T+HO	2924
	TYPE R	4B+4T+HO	2966
	TYPE Ra	4B+4T+HO	2968
	TYPE R1	4B+4T+HO	2956
<b>5BED AURUM SUITES</b>			
	TYPE S & S(A)	4B+4T+STUDIO+HO	3503
	TYPE T & T(A)	4B+4T+STUDIO+HO	3544
	TYPE U & U(A)	4B+4T+STUDIO+HO	3692
	TYPE U1 & U1(A)	4B+4T+STUDIO+HO	3698
<b>REFUGE FLOOR</b>			
	TYPE H(r)	3B+3T	2121
	TYPE I(r)	3B+3T+HO	2244
	TYPE K(r)	3B+3T+HO	2414
	TYPE L(r)	3B+3T+HO	2226
	TYPE M(r)	4B+3T+HO	2421
	TYPE M1(r)	4B+3T+HO	2481
	TYPE N(r)	4B+3T	2353
	TYPE N1(r)	4B+3T+HO	2482
	TYPE P(r)	4B+3T	2501
	TYPE U1 (r) & U1(RA)	4B+4T+STUDIO	3540
	TYPE V(r)	4B+3T+HO	2490



An architectural rendering of a modern high-rise apartment building. The building features a mix of brown and grey facades with numerous balconies. In the foreground, there is a lush garden with various trees, including a large tree on the left and several flowering plants. Two people are walking on a path through the garden. The sky is blue with a few clouds and a white contrail from an airplane. The overall scene is bright and sunny.

# GREEN VISTAS AND PEACEFUL PEDESTRIAN TRAILS







# BUILDING - 02

Tower - 05



TOWER 5		
UNIT TYPE	UNIT No.	AREA
UNIT - C	01	2013 SFT
UNIT - B	02	2004 SFT
UNIT - A	03	2005 SFT
UNIT - D	04	2020 SFT





# BUILDING - 02

Tower - 06



TOWER 6		
UNIT TYPE	UNIT No.	AREA
UNIT - H	01, 03	2267 SFT
UNIT - F	02	2225 SFT
UNIT - J	04	2401 SFT



# BUILDING - 02

Tower - 07

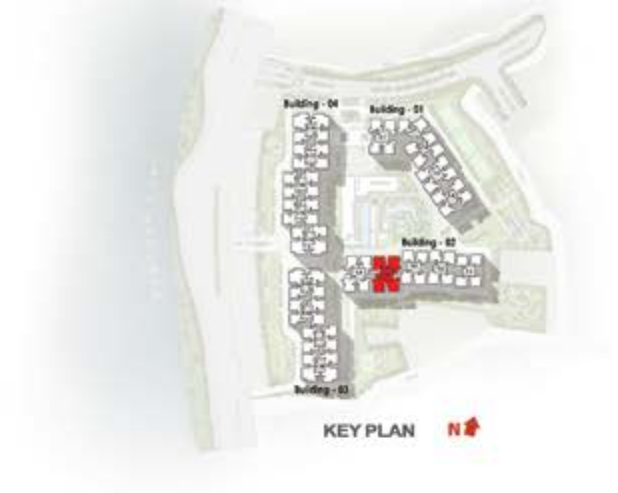


TOWER 7		
UNIT TYPE	UNIT No.	AREA
UNIT - H	01, 03	2267 SFT
UNIT - F	02	2225 SFT
UNIT - E	04	2187 SFT



# BUILDING - 02

Tower - 08

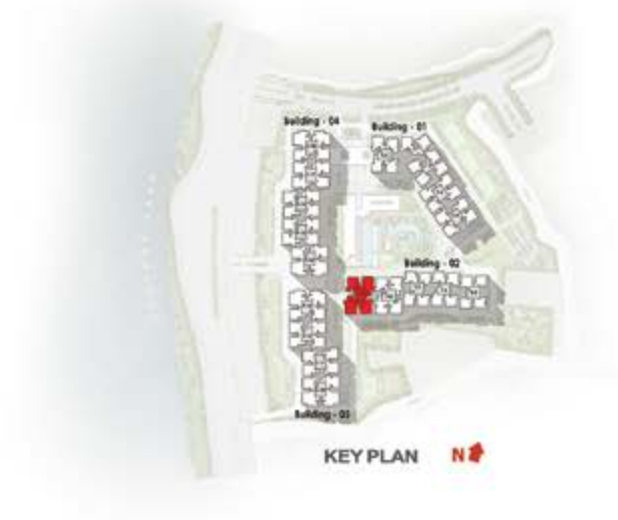


TOWER 8		
UNIT TYPE	UNIT No.	AREA
UNIT - N	01, 03	2533 SFT
UNIT - R	02	2966 SFT
UNIT - Q	04	2924 SFT



# BUILDING - 02

Tower - 09



TOWER 9		
UNIT TYPE	UNIT No.	AREA
UNIT - N	01, 03	2533 SFT
UNIT - R	02	2966 SFT
UNIT - Q	04	2924 SFT



**YOUR HOME IN ALL  
ITS EXPANSIVE GLORY**



*Artist's Impression*



# BUILDING - 03

First Floor Plan

LEGEND	UNIT MATRIX		AREA
<b>3BED URBANIA</b>			
	TYPE A	3B+3T	2005
	TYPE B	3B+3T	2004
	TYPE C	3B+3T	2013
	TYPE D	3B+3T	2020
<b>3BED REGALIA</b>			
	TYPE E	3B+3T+HO	2187
	TYPE F	3B+3T+HO	2225
	TYPE G	3B+3T+HO	2246
	TYPE H	3B+3T+HO	2267
	TYPE I	3B+3T+HO	2314
	TYPE J	3B+3T+HO	2401
	TYPE K	3B+3T+HO	2414



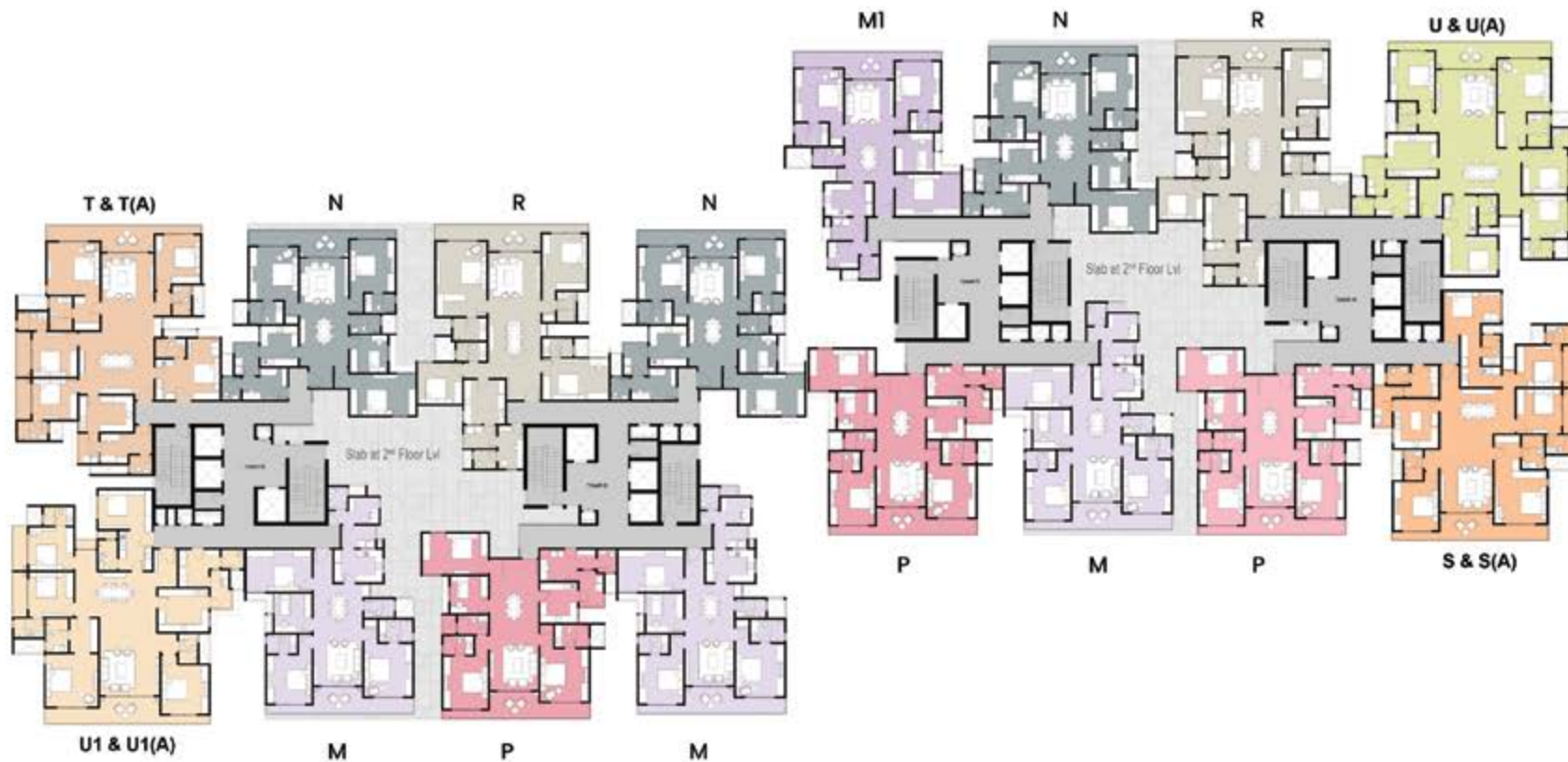
LEGEND	UNIT MATRIX		AREA
<b>4BED IMPERIA</b>			
	TYPE L	4B+3T+HO	2451
	TYPE M	4B+3T+HO	2471
	TYPE M1	4B+3T+HO	2474
	TYPE N	4B+3T+HO	2533
	TYPE N1	4B+3T+HO	2533
	TYPE P	4B+3T+HO	2588
	TYPE V	4B+3T+HO	2540
<b>4BED INFANIA</b>			
	TYPE Q	4B+4T+HO	2924
	TYPE R	4B+4T+HO	2966
	TYPE Ra	4B+4T+HO	2968
	TYPE R1	4B+4T+HO	2956
<b>5BED AURUM SUITES</b>			
	TYPE S & S(A)	4B+4T+STUDIO+HO	3503
	TYPE T & T(A)	4B+4T+STUDIO+HO	3544
	TYPE U & U(A)	4B+4T+STUDIO+HO	3692
	TYPE U1 & U1(A)	4B+4T+STUDIO+HO	3698
<b>REFUGE FLOOR</b>			
	TYPE H(r)	3B+3T	2121
	TYPE I(r)	3B+3T+HO	2244
	TYPE K(r)	3B+3T+HO	2414
	TYPE L(r)	3B+3T+HO	2226
	TYPE M(r)	4B+3T+HO	2421
	TYPE M1(r)	4B+3T+HO	2481
	TYPE N(r)	4B+3T	2353
	TYPE N1(r)	4B+3T+HO	2482
	TYPE P(r)	4B+3T	2501
	TYPE U1 (r) & U1(RA)	4B+4T+STUDIO	3540
	TYPE V(r)	4B+3T+HO	2490



# BUILDING - 03

## Second Floor Plan

LEGEND	UNIT MATRIX		AREA
<b>3BED URBANIA</b>			
	TYPE A	3B+3T	2005
	TYPE B	3B+3T	2004
	TYPE C	3B+3T	2013
	TYPE D	3B+3T	2020
<b>3BED REGALIA</b>			
	TYPE E	3B+3T+HO	2187
	TYPE F	3B+3T+HO	2225
	TYPE G	3B+3T+HO	2246
	TYPE H	3B+3T+HO	2267
	TYPE I	3B+3T+HO	2314
	TYPE J	3B+3T+HO	2401
	TYPE K	3B+3T+HO	2414



LEGEND	UNIT MATRIX		AREA
<b>4BED IMPERIA</b>			
	TYPE L	4B+3T+HO	2451
	TYPE M	4B+3T+HO	2471
	TYPE M1	4B+3T+HO	2474
	TYPE N	4B+3T+HO	2533
	TYPE N1	4B+3T+HO	2533
	TYPE P	4B+3T+HO	2588
	TYPE V	4B+3T+HO	2540
<b>4BED INFANIA</b>			
	TYPE Q	4B+4T+HO	2924
	TYPE R	4B+4T+HO	2966
	TYPE Ra	4B+4T+HO	2968
	TYPE R1	4B+4T+HO	2956
<b>5BED AURUM SUITES</b>			
	TYPE S & S(A)	4B+4T+STUDIO+HO	3503
	TYPE T & T(A)	4B+4T+STUDIO+HO	3544
	TYPE U & U(A)	4B+4T+STUDIO+HO	3692
	TYPE U1 & U1(A)	4B+4T+STUDIO+HO	3698
<b>REFUGE FLOOR</b>			
	TYPE H(r)	3B+3T	2121
	TYPE I(r)	3B+3T+HO	2244
	TYPE K(r)	3B+3T+HO	2414
	TYPE L(r)	3B+3T+HO	2226
	TYPE M(r)	4B+3T+HO	2421
	TYPE M1(r)	4B+3T+HO	2481
	TYPE N(r)	4B+3T	2353
	TYPE N1(r)	4B+3T+HO	2482
	TYPE P(r)	4B+3T	2501
	TYPE U1 (r) & U1(RA)	4B+4T+STUDIO	3540
	TYPE V(r)	4B+3T+HO	2490

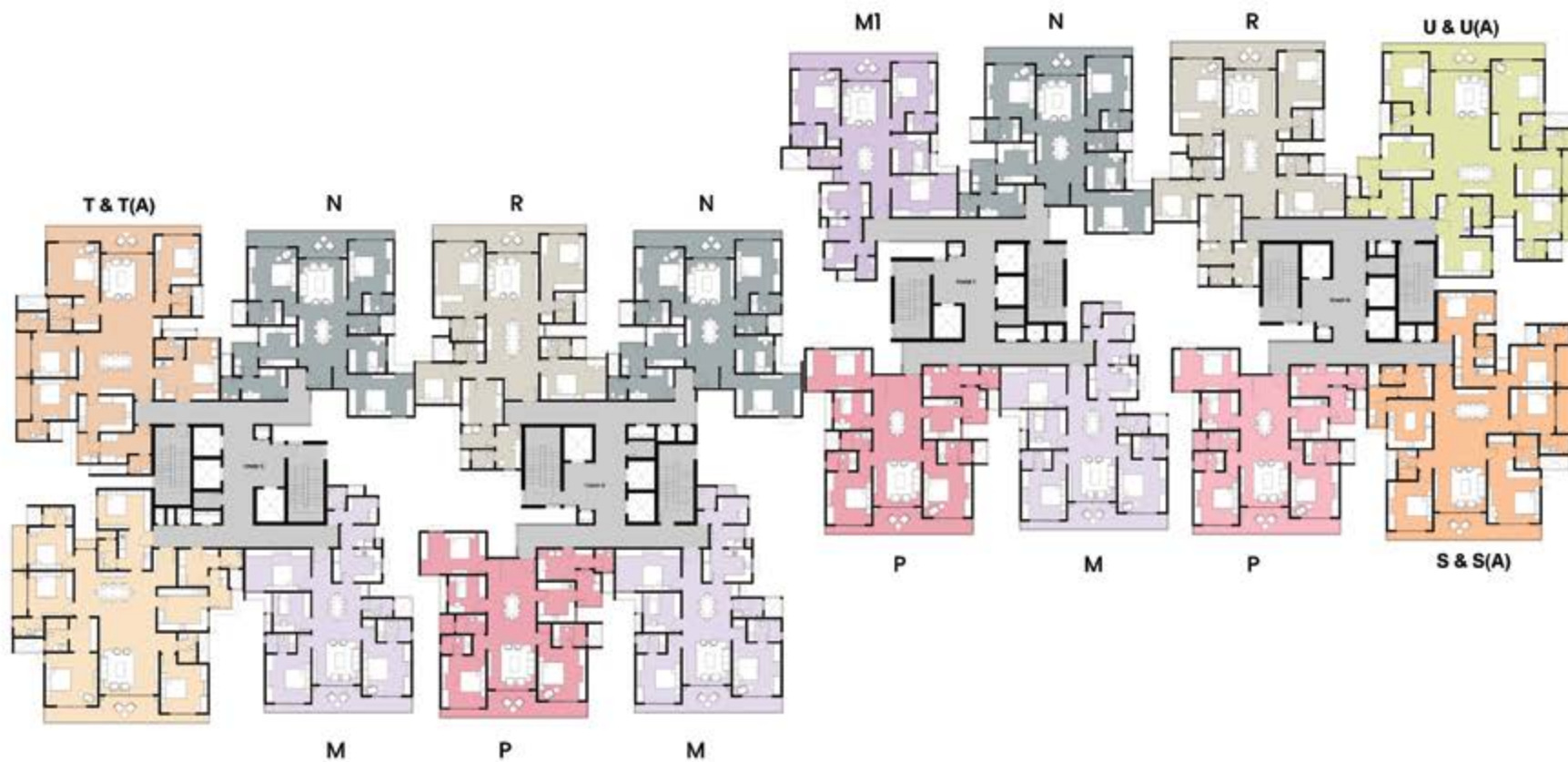




# BUILDING - 03

Typical Floor Plan

LEGEND	UNIT MATRIX		AREA
<b>3BED URBANIA</b>			
	TYPE A	3B+3T	2005
	TYPE B	3B+3T	2004
	TYPE C	3B+3T	2013
	TYPE D	3B+3T	2020
<b>3BED REGALIA</b>			
	TYPE E	3B+3T+HO	2187
	TYPE F	3B+3T+HO	2225
	TYPE G	3B+3T+HO	2246
	TYPE H	3B+3T+HO	2267
	TYPE I	3B+3T+HO	2314
	TYPE J	3B+3T+HO	2401
	TYPE K	3B+3T+HO	2414



LEGEND	UNIT MATRIX		AREA
<b>4BED IMPERIA</b>			
	TYPE L	4B+3T+HO	2451
	TYPE M	4B+3T+HO	2471
	TYPE M1	4B+3T+HO	2474
	TYPE N	4B+3T+HO	2533
	TYPE N1	4B+3T+HO	2533
	TYPE P	4B+3T+HO	2588
	TYPE V	4B+3T+HO	2540
<b>4BED INFANIA</b>			
	TYPE Q	4B+4T+HO	2924
	TYPE R	4B+4T+HO	2966
	TYPE Ra	4B+4T+HO	2968
	TYPE R1	4B+4T+HO	2956
<b>5BED AURUM SUITES</b>			
	TYPE S & S(A)	4B+4T+STUDIO+HO	3503
	TYPE T & T(A)	4B+4T+STUDIO+HO	3544
	TYPE U & U(A)	4B+4T+STUDIO+HO	3692
	TYPE U1 & U1(A)	4B+4T+STUDIO+HO	3698
<b>REFUGE FLOOR</b>			
	TYPE H(r)	3B+3T	2121
	TYPE I(r)	3B+3T+HO	2244
	TYPE K(r)	3B+3T+HO	2414
	TYPE L(r)	3B+3T+HO	2226
	TYPE M(r)	4B+3T+HO	2421
	TYPE M1(r)	4B+3T+HO	2481
	TYPE N(r)	4B+3T	2353
	TYPE N1(r)	4B+3T+HO	2482
	TYPE P(r)	4B+3T	2501
	TYPE U1 (r) & U1(RA)	4B+4T+STUDIO	3540
	TYPE V(r)	4B+3T+HO	2490

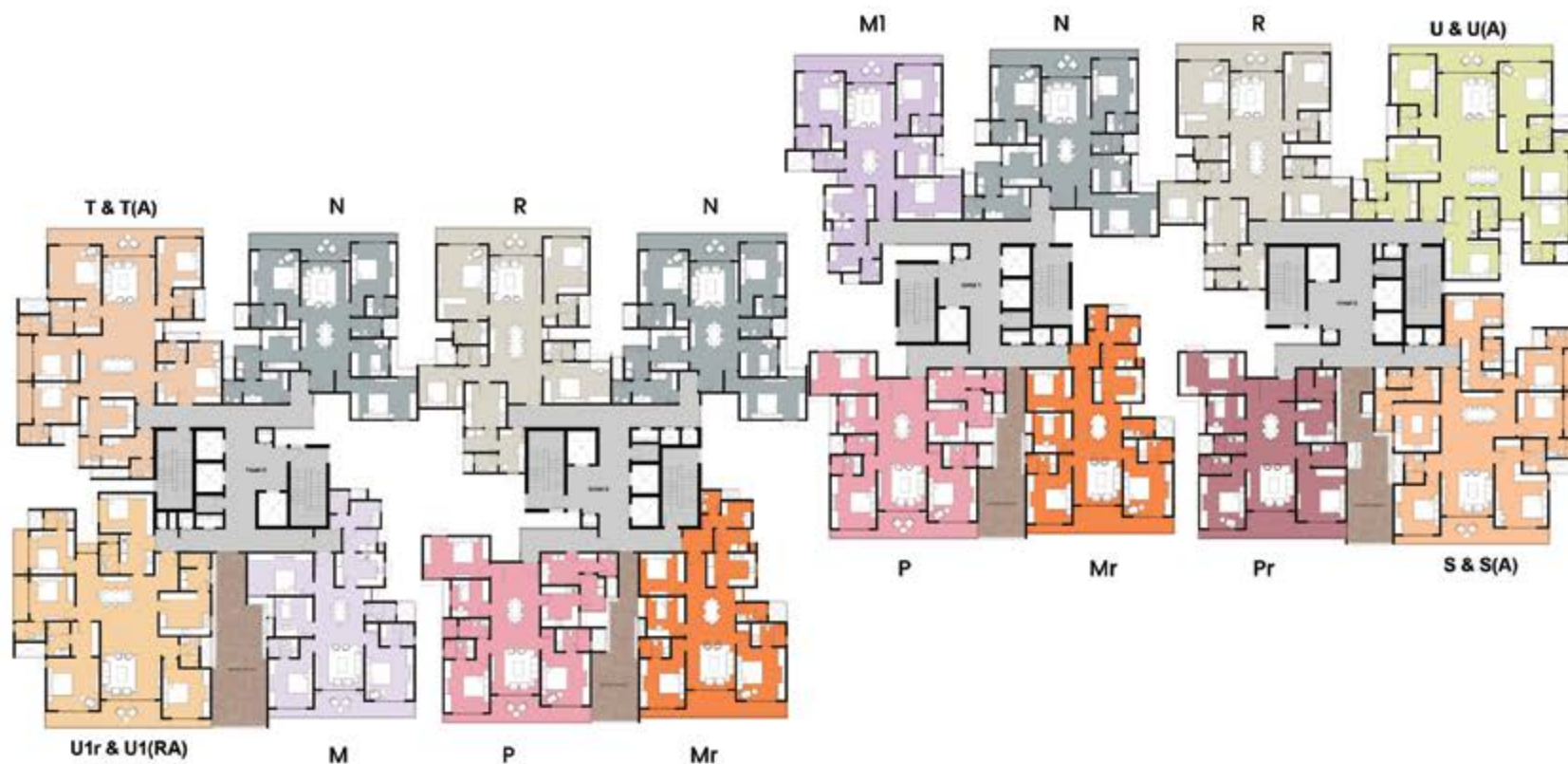




# BUILDING - 03

## Refuge Floor Plan

LEGEND	UNIT MATRIX		AREA
<b>3BED URBANIA</b>			
	TYPE A	3B+3T	2005
	TYPE B	3B+3T	2004
	TYPE C	3B+3T	2013
	TYPE D	3B+3T	2020
<b>3BED REGALIA</b>			
	TYPE E	3B+3T+HO	2187
	TYPE F	3B+3T+HO	2225
	TYPE G	3B+3T+HO	2246
	TYPE H	3B+3T+HO	2267
	TYPE I	3B+3T+HO	2314
	TYPE J	3B+3T+HO	2401
	TYPE K	3B+3T+HO	2414



LEGEND	UNIT MATRIX		AREA
<b>4BED IMPERIA</b>			
	TYPE L	4B+3T+HO	2451
	TYPE M	4B+3T+HO	2471
	TYPE M1	4B+3T+HO	2474
	TYPE N	4B+3T+HO	2533
	TYPE N1	4B+3T+HO	2533
	TYPE P	4B+3T+HO	2588
	TYPE V	4B+3T+HO	2540
<b>4BED INFANIA</b>			
	TYPE Q	4B+4T+HO	2924
	TYPE R	4B+4T+HO	2966
	TYPE Ra	4B+4T+HO	2968
	TYPE R1	4B+4T+HO	2956
<b>5BED AURUM SUITES</b>			
	TYPE S & S(A)	4B+4T+STUDIO+HO	3503
	TYPE T & T(A)	4B+4T+STUDIO+HO	3544
	TYPE U & U(A)	4B+4T+STUDIO+HO	3692
	TYPE U1 & U1(A)	4B+4T+STUDIO+HO	3698
<b>REFUGE FLOOR</b>			
	TYPE H(r)	3B+3T	2121
	TYPE I(r)	3B+3T+HO	2244
	TYPE K(r)	3B+3T+HO	2414
	TYPE L(r)	3B+3T+HO	2226
	TYPE M(r)	4B+3T+HO	2421
	TYPE M1(r)	4B+3T+HO	2481
	TYPE N(r)	4B+3T	2353
	TYPE N1(r)	4B+3T+HO	2482
	TYPE P(r)	4B+3T	2501
	TYPE U1 (r) & U1(RA)	4B+4T+STUDIO	3540
	TYPE V(r)	4B+3T+HO	2490





# BUILDING - 03

Tower - 10

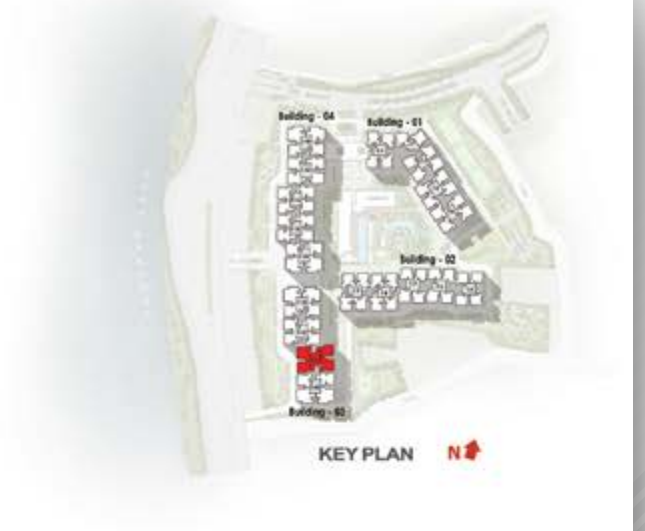


TOWER 10		
UNIT TYPE	UNIT No.	AREA
UNIT - S & S(A)	01 & 01 A	3503 SFT
UNIT - P	02	2588 SFT
UNIT - R	03	2966 SFT
UNIT - U & U(A)	04 & 04 A	3692 SFT



# BUILDING - 03

Tower - 11



TOWER 11		
UNIT TYPE	UNIT No.	AREA
UNIT - M	01	2471 SFT
UNIT - P	02	2588 SFT
UNIT - M1	03	2474 SFT
UNIT - N	04	2533 SFT



# BUILDING - 03

Tower - 12



TOWER 12		
UNIT TYPE	UNIT No.	AREA
UNIT - M	01	2471 SFT
UNIT - P	02	2588 SFT
UNIT - R	03	2966 SFT
UNIT - N	04	2533 SFT



# BUILDING - 03

Tower - 13



TOWER 13		
UNIT TYPE	UNIT No.	AREA
UNIT - T & T(A)	01 & 01 A	3544 SFT
UNIT - N	02	2533 SFT
UNIT - M	03	2471 SFT
UNIT - U1 & U1(A)	04 & 04 A	3698 SFT



# BUILDING - 04

## First Floor Plan

LEGEND	UNIT MATRIX		AREA
<b>3BED URBANIA</b>			
	TYPE A	3B+3T	2005
	TYPE B	3B+3T	2004
	TYPE C	3B+3T	2013
	TYPE D	3B+3T	2020
<b>3BED REGALIA</b>			
	TYPE E	3B+3T+HO	2187
	TYPE F	3B+3T+HO	2225
	TYPE G	3B+3T+HO	2246
	TYPE H	3B+3T+HO	2267
	TYPE I	3B+3T+HO	2314
	TYPE J	3B+3T+HO	2401
	TYPE K	3B+3T+HO	2414



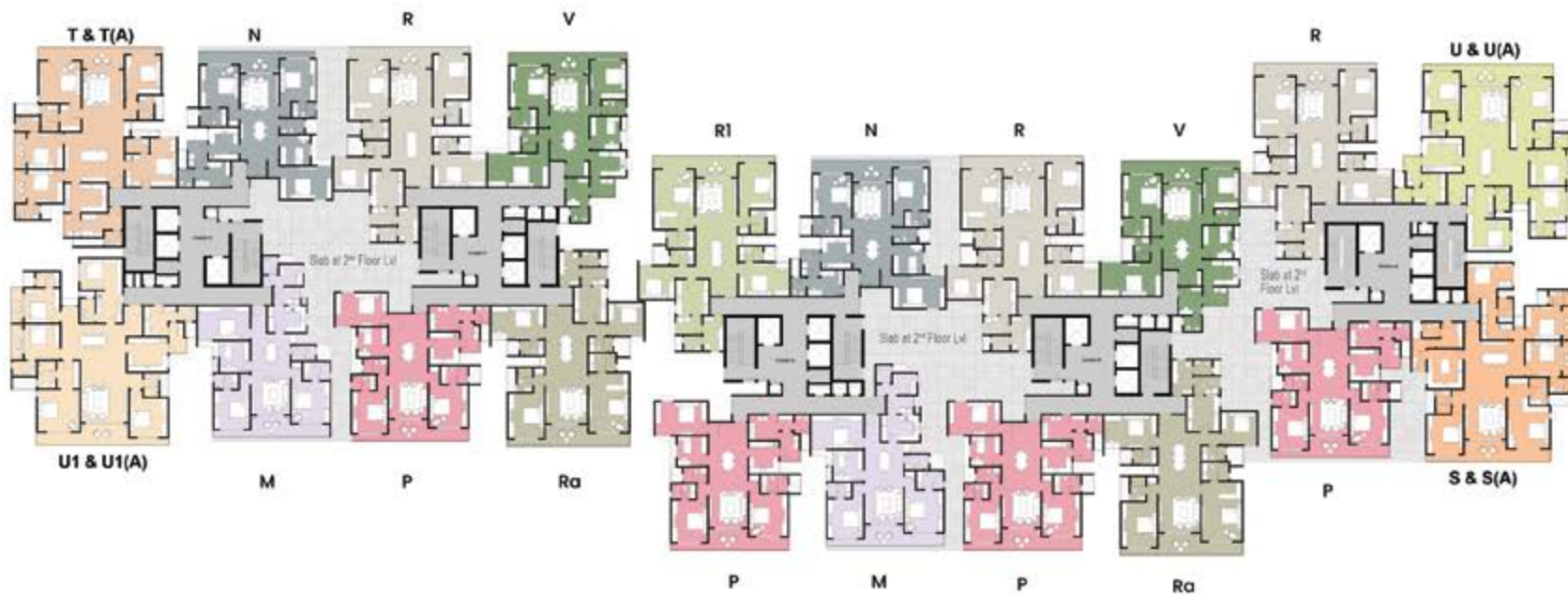
LEGEND	UNIT MATRIX		AREA
<b>4BED IMPERIA</b>			
	TYPE L	4B+3T+HO	2451
	TYPE M	4B+3T+HO	2471
	TYPE M1	4B+3T+HO	2474
	TYPE N	4B+3T+HO	2533
	TYPE N1	4B+3T+HO	2533
	TYPE P	4B+3T+HO	2588
	TYPE V	4B+3T+HO	2540
<b>4BED INFANIA</b>			
	TYPE Q	4B+4T+HO	2924
	TYPE R	4B+4T+HO	2966
	TYPE Ra	4B+4T+HO	2968
	TYPE R1	4B+4T+HO	2956
<b>5BED AURUM SUITES</b>			
	TYPE S & S(A)	4B+4T+STUDIO+HO	3503
	TYPE T & T(A)	4B+4T+STUDIO+HO	3544
	TYPE U & U(A)	4B+4T+STUDIO+HO	3692
	TYPE U1 & U1(A)	4B+4T+STUDIO+HO	3698
<b>REFUGE FLOOR</b>			
	TYPE H(r)	3B+3T	2121
	TYPE I(r)	3B+3T+HO	2244
	TYPE K(r)	3B+3T+HO	2414
	TYPE L(r)	3B+3T+HO	2226
	TYPE M(r)	4B+3T+HO	2421
	TYPE M1(r)	4B+3T+HO	2481
	TYPE N(r)	4B+3T	2353
	TYPE N1(r)	4B+3T+HO	2482
	TYPE P(r)	4B+3T	2501
	TYPE U1 (r) & U1(RA)	4B+4T+STUDIO	3540
	TYPE V(r)	4B+3T+HO	2490



# BUILDING - 04

## Second Floor Plan

LEGEND	UNIT MATRIX		AREA
<b>3BED URBANIA</b>			
	TYPE A	3B+3T	2005
	TYPE B	3B+3T	2004
	TYPE C	3B+3T	2013
	TYPE D	3B+3T	2020
<b>3BED REGALIA</b>			
	TYPE E	3B+3T+HO	2187
	TYPE F	3B+3T+HO	2225
	TYPE G	3B+3T+HO	2246
	TYPE H	3B+3T+HO	2267
	TYPE I	3B+3T+HO	2314
	TYPE J	3B+3T+HO	2401
	TYPE K	3B+3T+HO	2414



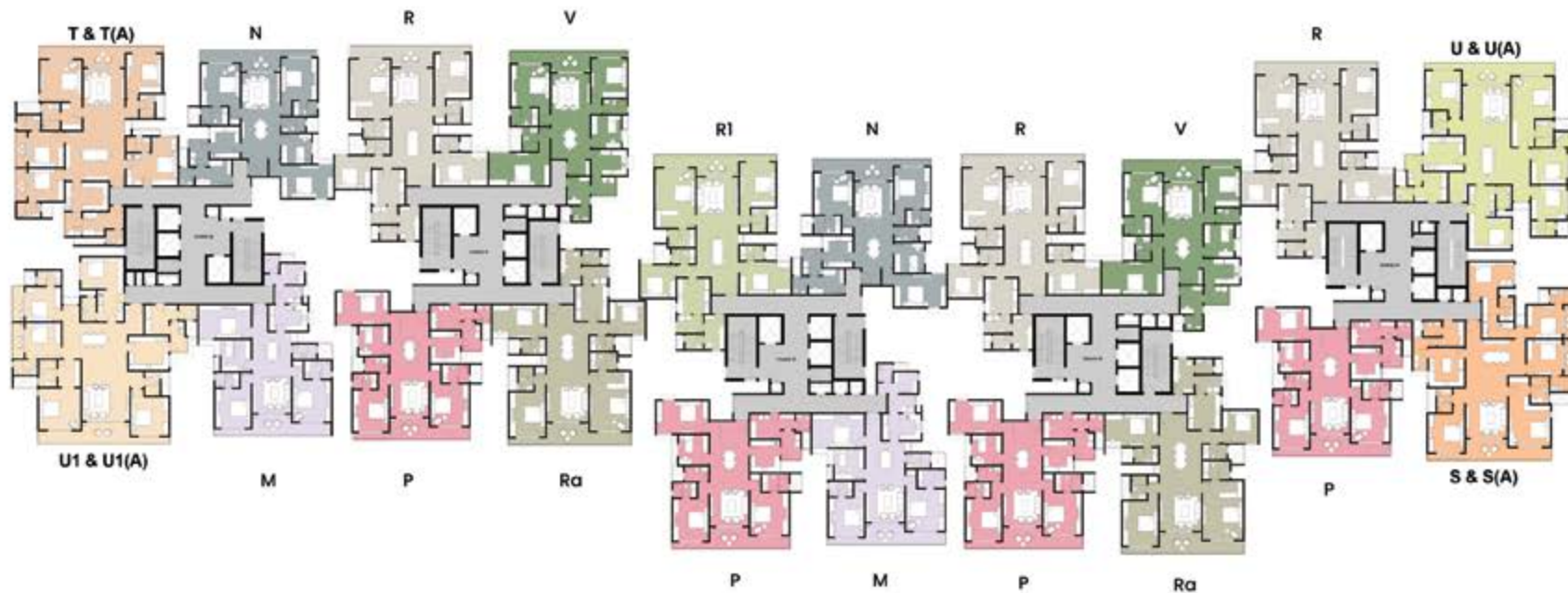
LEGEND	UNIT MATRIX		AREA
<b>4BED IMPERIA</b>			
	TYPE L	4B+3T+HO	2451
	TYPE M	4B+3T+HO	2471
	TYPE M1	4B+3T+HO	2474
	TYPE N	4B+3T+HO	2533
	TYPE N1	4B+3T+HO	2533
	TYPE P	4B+3T+HO	2588
	TYPE V	4B+3T+HO	2540
<b>4BED INFANIA</b>			
	TYPE Q	4B+4T+HO	2924
	TYPE R	4B+4T+HO	2966
	TYPE Ra	4B+4T+HO	2968
	TYPE R1	4B+4T+HO	2956
<b>5BED AURUM SUITES</b>			
	TYPE S & S(A)	4B+4T+STUDIO+HO	3503
	TYPE T & T(A)	4B+4T+STUDIO+HO	3544
	TYPE U & U(A)	4B+4T+STUDIO+HO	3692
	TYPE U1 & U1(A)	4B+4T+STUDIO+HO	3698
<b>REFUGE FLOOR</b>			
	TYPE H(r)	3B+3T	2121
	TYPE I(r)	3B+3T+HO	2244
	TYPE K(r)	3B+3T+HO	2414
	TYPE L(r)	3B+3T+HO	2226
	TYPE M(r)	4B+3T+HO	2421
	TYPE M1(r)	4B+3T+HO	2481
	TYPE N(r)	4B+3T	2353
	TYPE N1(r)	4B+3T+HO	2482
	TYPE P(r)	4B+3T	2501
	TYPE U1 (r) & U1(RA)	4B+4T+STUDIO	3540
	TYPE V(r)	4B+3T+HO	2490



# BUILDING - 04

Typical Floor Plan

LEGEND	UNIT MATRIX		AREA
<b>3BED URBANIA</b>			
	TYPE A	3B+3T	2005
	TYPE B	3B+3T	2004
	TYPE C	3B+3T	2013
	TYPE D	3B+3T	2020
<b>3BED REGALIA</b>			
	TYPE E	3B+3T+HO	2187
	TYPE F	3B+3T+HO	2225
	TYPE G	3B+3T+HO	2246
	TYPE H	3B+3T+HO	2267
	TYPE I	3B+3T+HO	2314
	TYPE J	3B+3T+HO	2401
	TYPE K	3B+3T+HO	2414



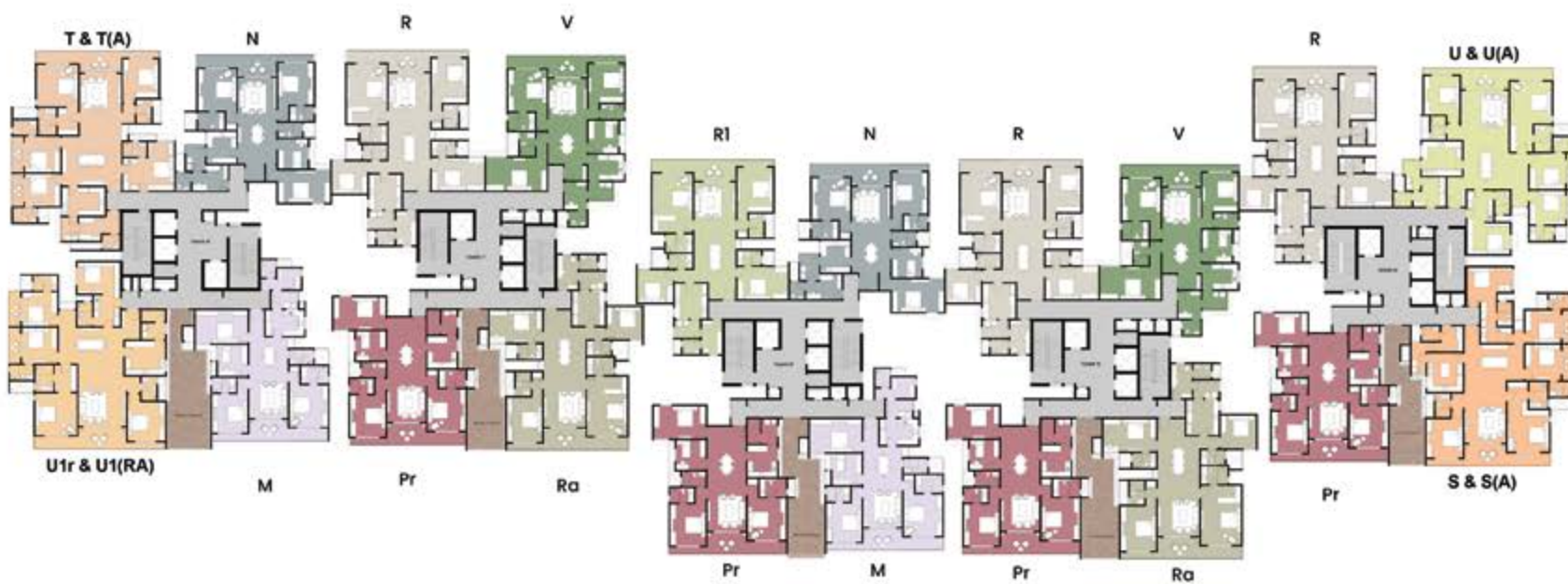
LEGEND	UNIT MATRIX		AREA
<b>4BED IMPERIA</b>			
	TYPE L	4B+3T+HO	2451
	TYPE M	4B+3T+HO	2471
	TYPE M1	4B+3T+HO	2474
	TYPE N	4B+3T+HO	2533
	TYPE N1	4B+3T+HO	2533
	TYPE P	4B+3T+HO	2588
	TYPE V	4B+3T+HO	2540
<b>4BED INFANIA</b>			
	TYPE Q	4B+4T+HO	2924
	TYPE R	4B+4T+HO	2966
	TYPE Ra	4B+4T+HO	2968
	TYPE R1	4B+4T+HO	2956
<b>5BED AURUM SUITES</b>			
	TYPE S & S(A)	4B+4T+STUDIO+HO	3503
	TYPE T & T(A)	4B+4T+STUDIO+HO	3544
	TYPE U & U(A)	4B+4T+STUDIO+HO	3692
	TYPE U1 & U1(A)	4B+4T+STUDIO+HO	3698
<b>REFUGE FLOOR</b>			
	TYPE H(r)	3B+3T	2121
	TYPE I(r)	3B+3T+HO	2244
	TYPE K(r)	3B+3T+HO	2414
	TYPE L(r)	3B+3T+HO	2226
	TYPE M(r)	4B+3T+HO	2421
	TYPE M1(r)	4B+3T+HO	2481
	TYPE N(r)	4B+3T	2353
	TYPE N1(r)	4B+3T+HO	2482
	TYPE P(r)	4B+3T	2501
	TYPE U1 (r) & U1(RA)	4B+4T+STUDIO	3540
	TYPE V(r)	4B+3T+HO	2490



# BUILDING - 04

Refuge Floor Plan

LEGEND	UNIT MATRIX		AREA
<b>3BED URBANIA</b>			
	TYPE A	3B+3T	2005
	TYPE B	3B+3T	2004
	TYPE C	3B+3T	2013
	TYPE D	3B+3T	2020
<b>3BED REGALIA</b>			
	TYPE E	3B+3T+HO	2187
	TYPE F	3B+3T+HO	2225
	TYPE G	3B+3T+HO	2246
	TYPE H	3B+3T+HO	2267
	TYPE I	3B+3T+HO	2314
	TYPE J	3B+3T+HO	2401
	TYPE K	3B+3T+HO	2414



LEGEND	UNIT MATRIX		AREA
<b>4BED IMPERIA</b>			
	TYPE L	4B+3T+HO	2451
	TYPE M	4B+3T+HO	2471
	TYPE M1	4B+3T+HO	2474
	TYPE N	4B+3T+HO	2533
	TYPE N1	4B+3T+HO	2533
	TYPE P	4B+3T+HO	2588
	TYPE V	4B+3T+HO	2540
<b>4BED INFANIA</b>			
	TYPE Q	4B+4T+HO	2924
	TYPE R	4B+4T+HO	2966
	TYPE Ra	4B+4T+HO	2968
	TYPE R1	4B+4T+HO	2956
<b>5BED AURUM SUITES</b>			
	TYPE S & S(A)	4B+4T+STUDIO+HO	3503
	TYPE T & T(A)	4B+4T+STUDIO+HO	3544
	TYPE U & U(A)	4B+4T+STUDIO+HO	3692
	TYPE U1 & U1(A)	4B+4T+STUDIO+HO	3698
<b>REFUGE FLOOR</b>			
	TYPE H(r)	3B+3T	2121
	TYPE I(r)	3B+3T+HO	2244
	TYPE K(r)	3B+3T+HO	2414
	TYPE L(r)	3B+3T+HO	2226
	TYPE M(r)	4B+3T+HO	2421
	TYPE M1(r)	4B+3T+HO	2481
	TYPE N(r)	4B+3T	2353
	TYPE N1(r)	4B+3T+HO	2482
	TYPE P(r)	4B+3T	2501
	TYPE U1 (r) & U1(RA)	4B+4T+STUDIO	3540
	TYPE V(r)	4B+3T+HO	2490



# BUILDING - 04

Tower - 14



TOWER 14		
UNIT TYPE	UNIT No.	AREA
UNIT - S & S(A)	01 & 01A	3503 SFT
UNIT - P	02	2588 SFT
UNIT - R	03	2966 SFT
UNIT - U & U(A)	04 & 04A	3692 SFT



# BUILDING - 04

Tower - 15



TOWER 15		
UNIT TYPE	UNIT No.	AREA
UNIT - Ra	01	2968 SFT
UNIT - P	02	2588 SFT
UNIT - R	03	2966 SFT
UNIT - V	04	2540 SFT



# BUILDING - 04

Tower - 16



TOWER 16		
UNIT TYPE	UNIT No.	AREA
UNIT - M	01	2471 SFT
UNIT - P	02	2588 SFT
UNIT - R1	03	2956 SFT
UNIT - N	04	2533 SFT





# BUILDING - 04

Tower - 17



TOWER 17		
UNIT TYPE	UNIT No.	AREA
UNIT - Ra	01	2968 SFT
UNIT - P	02	2588 SFT
UNIT - R	03	2966 SFT
UNIT - V	04	2540 SFT



# BUILDING - 04

Tower - 18

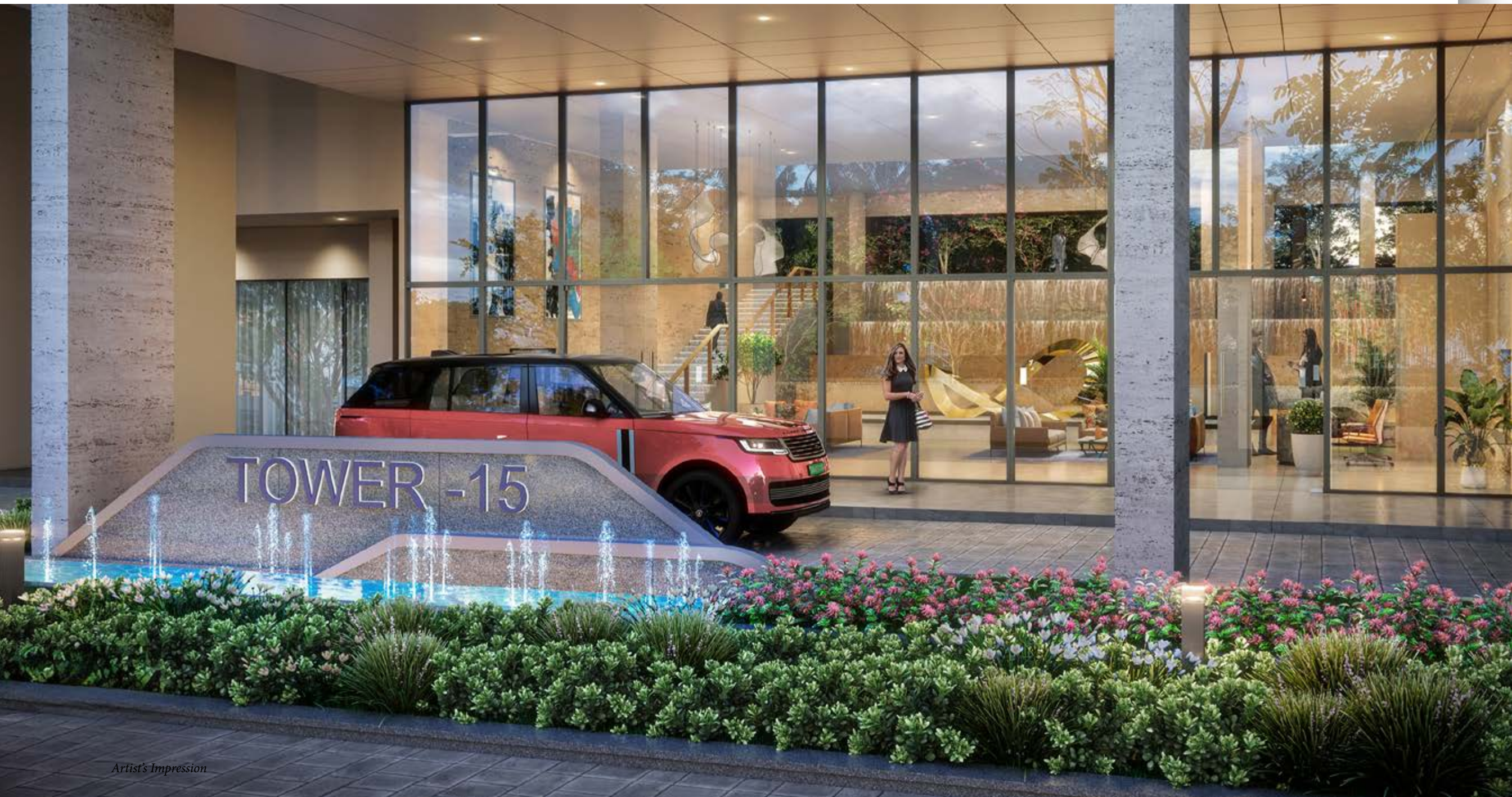


TOWER 18		
UNIT TYPE	UNIT No.	AREA
UNIT - T & T(A)	01 & 01A	3544 SFT
UNIT - N	02	2533 SFT
UNIT - M	03	2471 SFT
UNIT - U & U(A)	04 & 04A	3692 SFT





**DON'T JUST REACH HOME,  
MAKE AN ENTRANCE!**



*Artist's Impression*



**OPEN & AIRY – THE EXPANSIVE LIVING ROOM EXTENDS TO A SPACIOUS BALCONY.**



*Artist's Impression*



# U1 & U1A\* 5BED AURUM SUITES

4B+4T+STUDIO+HO



UNIT TYPE - U1 & U1 (a)	
SFT	
Saleable Area	3698
Carpet Area	2295
Balcony / Utility	363
BUILDING - 03 & 04	
TOWER - 13 & 18	
Level	1 <sup>st</sup> TO 18 <sup>th</sup>

\*Combined Unit



# U & UA\* 5BED AURUM SUITES

4B+4T+STUDIO+HO



UNIT TYPE - U & U (a)	
SFT	
Saleable Area	3692
Carpet Area	2269
Balcony / Utility	362
BUILDING - 03 & 04	
TOWER - 10 & 14	
Level	1 <sup>st</sup> TO 19 <sup>th</sup>

\*Combined Unit



# T & T<sup>A\*</sup> 5BED AURUM SUITES

4B+4T+STUDIO+HO



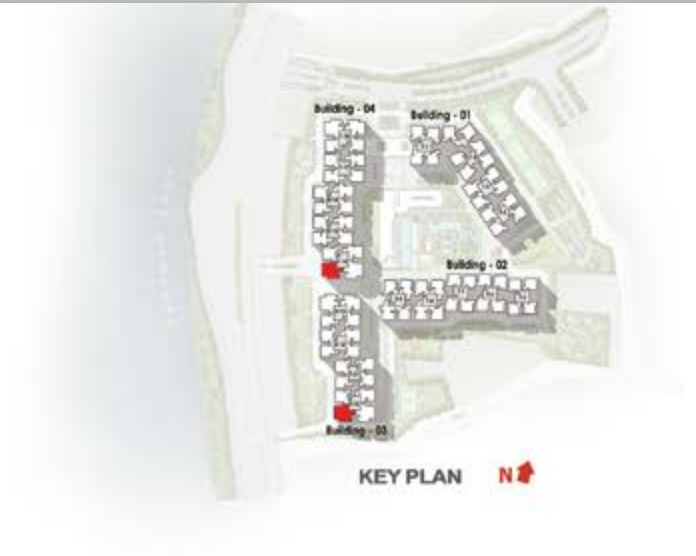
UNIT TYPE - T & T (a)	
SFT	
Saleable Area	3544
Carpet Area	2189
Balcony / Utility	331
BUILDING - 03 & 04	
TOWER - 13 & 18	
Level	1 <sup>st</sup> TO 19 <sup>th</sup>

\*Combined Unit



# S & SA\* 5BED AURUM SUITES

4B+4T+STUDIO+HO



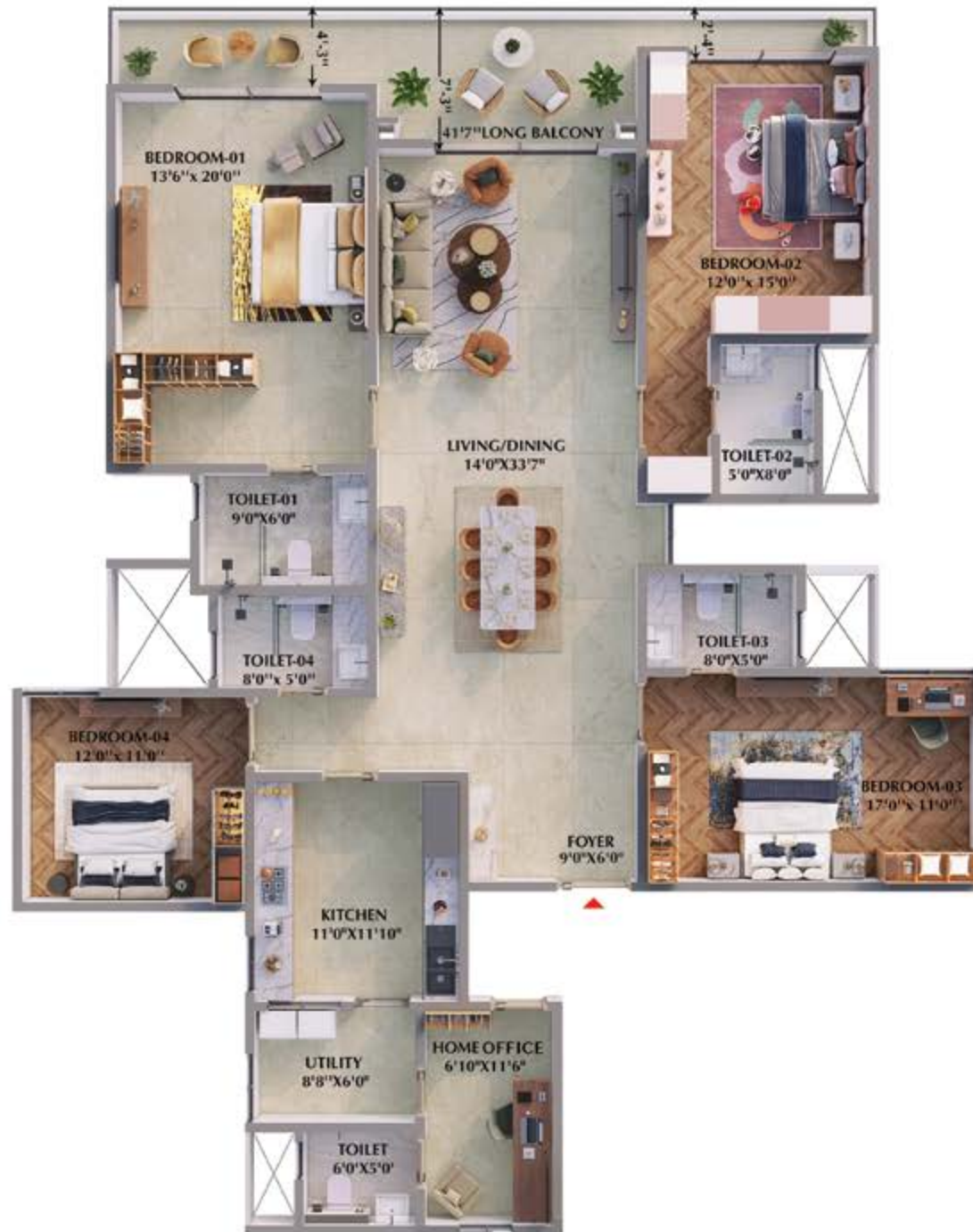
UNIT TYPE - S & S (a)	
SFT	
Saleable Area	3503
Carpets Area	2135
Balcony / Utility	355
BUILDING - 03 & 04	
TOWER - 10 & 14	
Level	1 <sup>st</sup> TO 19 <sup>th</sup>

\*Combined Unit



# R1 4BED INFINIA

4B+4T+HO



UNIT TYPE - R1	
	SFT
Saleable Area	2956
Carpet Area	1845
Balcony / Utility	246
BUILDING - 04	
TOWER - 16	
Level	1 <sup>st</sup> TO 19 <sup>th</sup>



# R<sup>A</sup> 4BED INFINIA

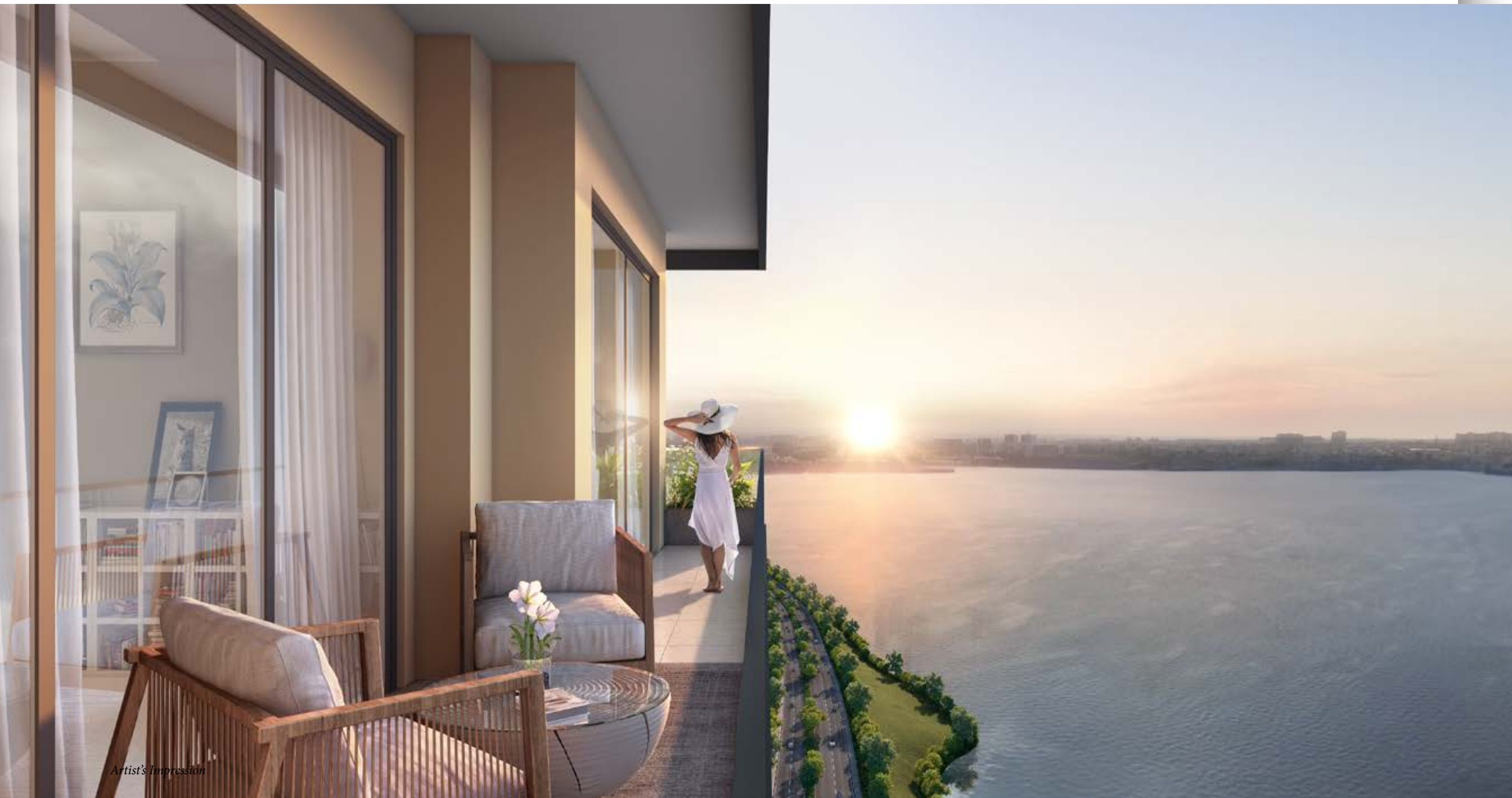
4B+4T+HO



UNIT TYPE - Ra	
SFT	
Saleable Area	2968
Carpet Area	1853
Balcony / Utility	247
BUILDING - 04	
TOWER - 15 & 17	
Level	1 <sup>st</sup> TO 19 <sup>th</sup>



**STEP OUT &  
ENJOY THE SUNRISE!**

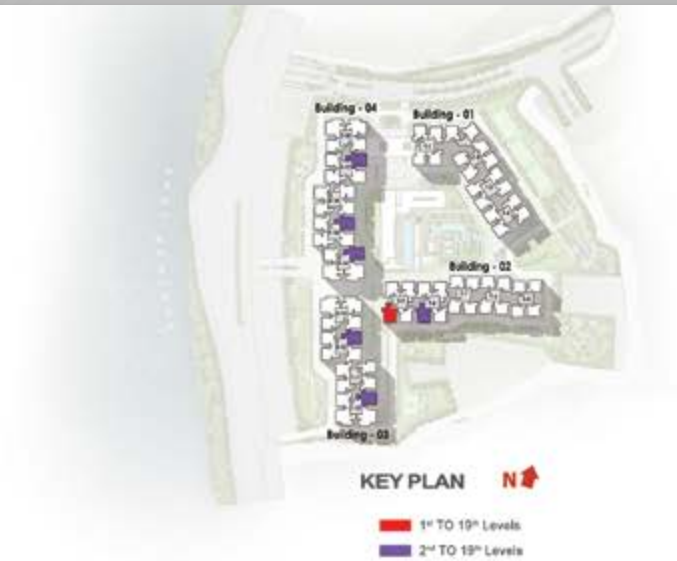
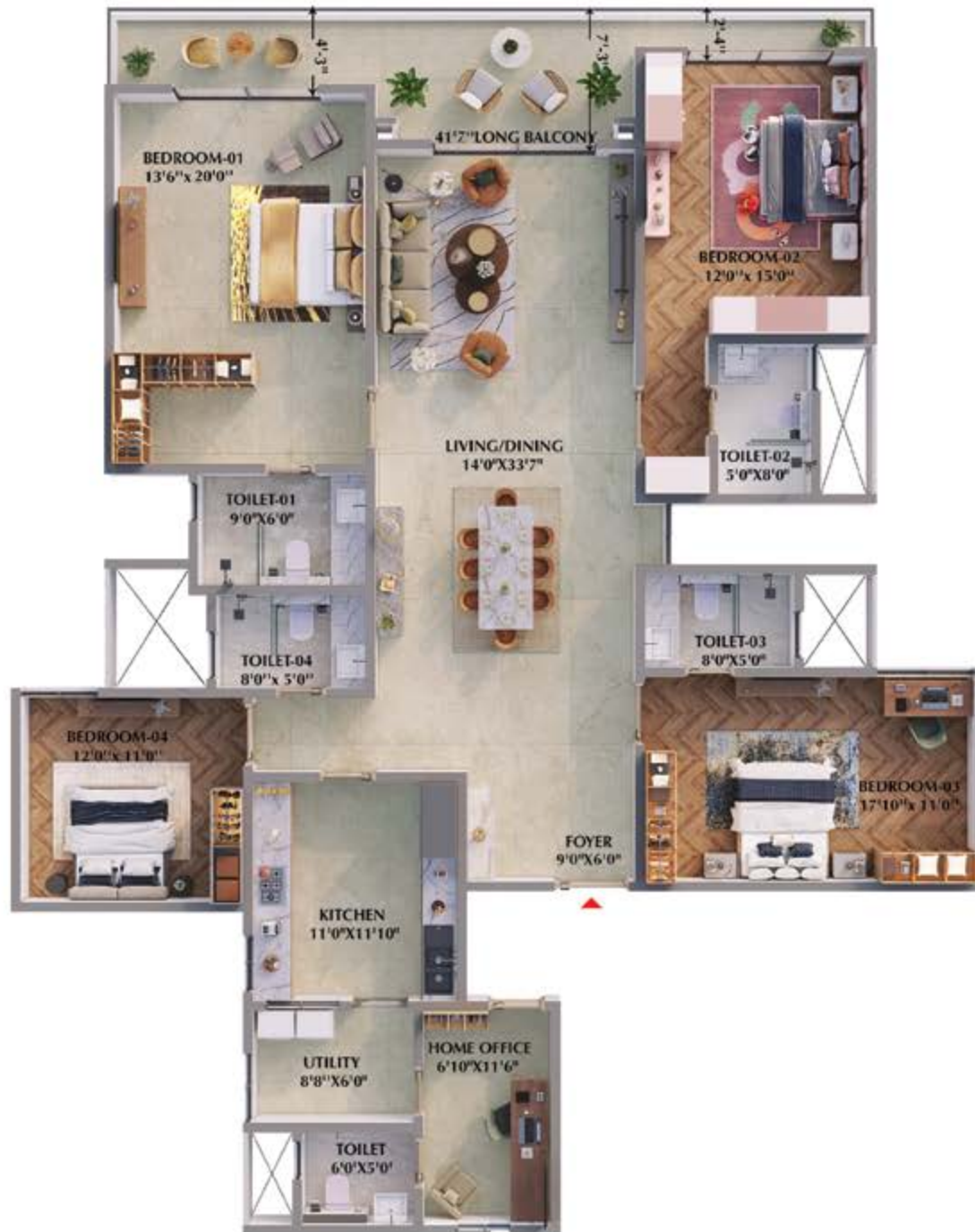


*Artist's Impression*



# R 4BED INFINIA

4B+4T+HO



UNIT TYPE - R	
	SFT
Saleable Area	2966
Carpet Area	1852
Balcony / Utility	247
BUILDING - 02, 03 & 04	
TOWER - 08, 09, 10, 12, 14, 15 & 17	
Level	1 <sup>st</sup> TO 19 <sup>th</sup>



# Q 4BED INFINIA

4B+4T+HO



UNIT TYPE - Q	
SFT	
Saleable Area	2924
Carpet Area	1820
Balcony / Utility	244
BUILDING - 02	
TOWER - 8 & 9	
Level	1 <sup>st</sup> TO 19 <sup>th</sup>





# 4BED IMPERIA

4B+3T+HO



- 1<sup>st</sup> TO 19<sup>th</sup> Levels
- 2<sup>nd</sup> TO 18<sup>th</sup> Levels

## UNIT TYPE - V

### SFT

Saleable Area	2540
Carpet Area	1542
Balcony / Utility	237

## BUILDING - 01 & 04

## TOWER - 03, 15 & 17

Level	1 <sup>st</sup> TO 19 <sup>th</sup>
-------	-------------------------------------



# P 4BED IMPERIA

4B+3T+HO

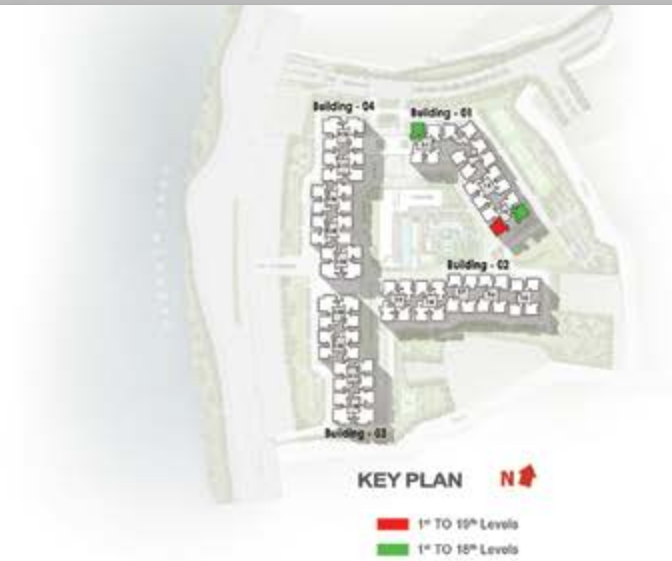


UNIT TYPE - P	
	SFT
Saleable Area	2588
Carpet Area	1601
Balcony / Utility	245
BUILDING - 01, 03 & 04	
TOWER - 4, 10, 11, 12, 14, 15, 16, 17	
Level	1 <sup>st</sup> TO 19 <sup>th</sup>



# N1 4BED IMPERIA

4B+3T+HO



UNIT TYPE - N1	
SFT	
Saleable Area	2533
Carpet Area	1558
Balcony / Utility	243
BUILDING - 01	
TOWER - 01 & 04	
Level	1 <sup>st</sup> TO 19 <sup>th</sup>



# N 4BED IMPERIA

4B+3T+HO



UNIT TYPE - N	
SFT	
Saleable Area	2533
Carpet Area	1558
Balcony / Utility	243
BUILDING - 01, 02, 03 & 04	
TOWER - 01, 2, 3, 8, 9, 11, 12, 13, 16 & 18	
Level	1 <sup>st</sup> TO 19 <sup>th</sup>



# YOUR PRIVATE SPACE IN THE SKY!



*Artist's Impression*



# M1 4BED IMPERIA

4B+3T+HO



UNIT TYPE - M1	
	SFT
Saleable Area	2474
Carpet Area	1512
Balcony / Utility	238
BUILDING - 01	
TOWER - 03	
Level	2 <sup>nd</sup> TO 18 <sup>th</sup>



# M 4BED IMPERIA

4B+3T+HO



UNIT TYPE - M	
	SFT
Saleable Area	2471
Carpet Area	1512
Balcony / Utility	234
BUILDING - 01, 03 & 04	
TOWER - 01, 03, 04, 11, 12, 13, 16, 18	
Level	1 <sup>st</sup> TO 19 <sup>th</sup>



# L 4BED IMPERIA

4B+3T+HO



UNIT TYPE - L	
	SFT
Saleable Area	2451
Carpet Area	1498
Balcony / Utility	239
BUILDING - 01	
TOWER - 01	
Level	2 <sup>nd</sup> TO 18 <sup>th</sup>



# K 3BED REGALIA

3B+3T+HO



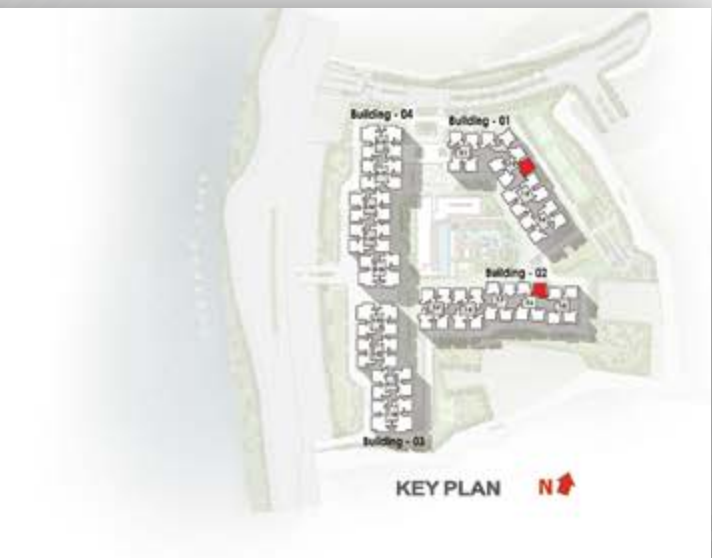
UNIT TYPE - K	
	SFT
Saleable Area	2414
Carpet Area	1486
Balcony / Utility	240
BUILDING - 01	
TOWER - 02	
Level	2 <sup>nd</sup> TO 18 <sup>th</sup>



# J

## 3BED REGALIA

3B+3T+HO



UNIT TYPE - J	
SFT	
Saleable Area	2401
Carpet Area	1446
Balcony / Utility	259
BUILDING - 01 & 02	
TOWER - 02 & 06	
Level	1 <sup>st</sup> TO 19 <sup>th</sup>



# I 3BED REGALIA

3B+3T+HO



<b>UNIT TYPE - I</b>	
<b>SFT</b>	
Saleable Area	2314
Carpet Area	1385
Balcony / Utility	248
<b>BUILDING - 01</b>	
<b>TOWER - 02</b>	
Level	2 <sup>nd</sup> TO 18 <sup>th</sup>



TAKE A DIP &  
MAKE A SPLASH!



*Artist's Impression*



# H 3BED REGALIA

3B+3T+HO



## UNIT TYPE - H

### SFT

Saleable Area	2267
Carpet Area	1359
Balcony / Utility	242

## BUILDING - 02

### TOWER - 06 & 07

Level	1 <sup>st</sup> TO 19 <sup>th</sup>
-------	-------------------------------------





# G 3BED REGALIA

3B+3T+HO



UNIT TYPE - G	
	SFT
Saleable Area	2246
Carpet Area	1364
Balcony / Utility	235
BUILDING - 01	
TOWER - 02	
Level	2 <sup>nd</sup> TO 19 <sup>th</sup>



# F 3BED REGALIA

3B+3T+HO



UNIT TYPE - F	
	SFT
Saleable Area	2225
Carpet Area	1328
Balcony / Utility	236
BUILDING - 02	
TOWER - 06	
Level	2 <sup>nd</sup> TO 19 <sup>th</sup>



# E 3BED REGALIA

3B+3T+HO



## UNIT TYPE - E

### SFT

Saleable Area	2187
Carpet Area	1321
Balcony / Utility	231

## BUILDING - 02

### TOWER - 07

Level	2 <sup>nd</sup> TO 19 <sup>th</sup>
-------	-------------------------------------





# D 3BED URBANIA

3B+3T



<b>UNIT TYPE - D</b>	
<b>SFT</b>	
Saleable Area	2020
Carpet Area	1244
Balcony / Utility	183
<b>BUILDING - 02</b>	
<b>TOWER - 05</b>	
Level	1 <sup>st</sup> TO 19 <sup>th</sup>



# C

## 3BED URBANIA

3B+3T



<b>UNIT TYPE - C</b>	
<b>SFT</b>	
Saleable Area	2013
Carpet Area	1209
Balcony / Utility	214
<b>BUILDING - 02</b>	
<b>TOWER - 05</b>	
Level	1 <sup>st</sup> TO 19 <sup>th</sup>



**WAKE UP EVERY MORNING  
READY TO RULE THE WORLD!**

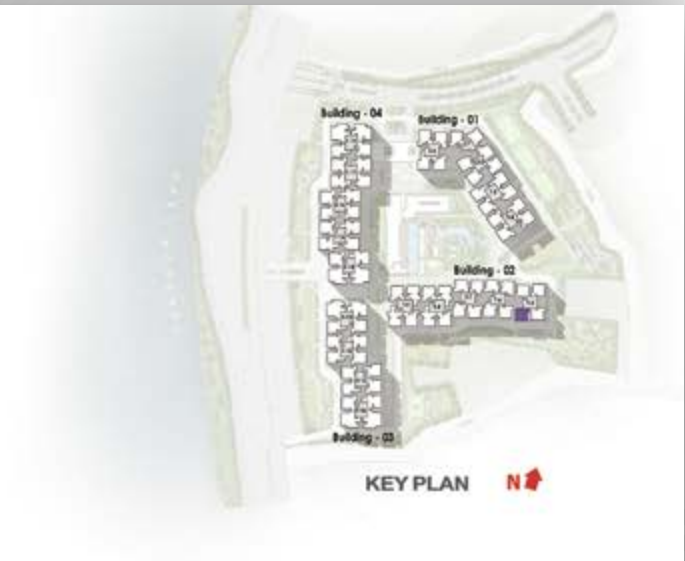


*Artist's Impression*



# B 3BED URBANIA

3B+3T

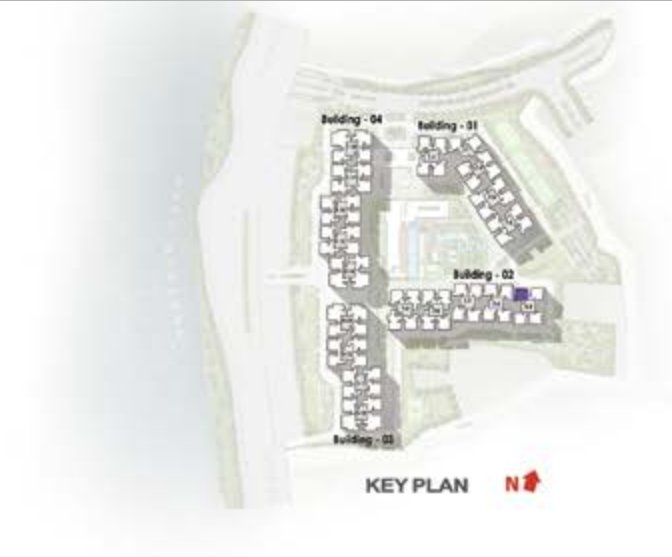


UNIT TYPE - B	
SFT	
Saleable Area	2004
Carpet Area	1202
Balcony / Utility	214
BUILDING - 02	
TOWER - 05	
Level	2 <sup>nd</sup> TO 19 <sup>th</sup>



# A 3BED URBANIA

3B+3T



<b>UNIT TYPE - A</b>	
	<b>SFT</b>
Saleable Area	2005
Carpent Area	1204
Balcony / Utility	214
<b>BUILDING - 02</b>	
<b>TOWER - 05</b>	
Level	2 <sup>nd</sup> TO 19 <sup>th</sup>



# HR 3BED REGALIA

3B+3T



UNIT TYPE - H (r)	
SFT	
Saleable Area	2121
Carpets Area	1240
Balcony / Utility	257
BUILDING - 02	
TOWER - 06 & 07	
Level	19 <sup>th</sup> (Refuge Floor)



IR

# 3BED REGALIA

3B+3T+HO



UNIT TYPE - I (r)	
SFT	
Saleable Area	2244
Carpet Area	1355
Balcony / Utility	248
BUILDING - 01	
TOWER - 02	
Level	19 <sup>th</sup> (Refuge Floor)



# K<sub>R</sub> 3BED REGALIA

3B+3T+HO



UNIT TYPE - K (r)	
SFT	
Saleable Area	2414
Carpet Area	1486
Balcony / Utility	240
BUILDING - 01	
TOWER - 02	
Level	19 <sup>th</sup> (Refuge Floor)



# LR 4BED IMPERIA

4B+3T+HO



UNIT TYPE - L (r)	
SFT	
Saleable Area	2226
Carpet Area	1342
Balcony / Utility	249
BUILDING - 01	
TOWER - 01	
Level	19 <sup>th</sup> (Refuge Floor)



**SWEET DREAMS IN  
YOUR DREAM HOME!**



*Artist's Impression*



# MR 4BED IMPERIA

4B+3T+HO



UNIT TYPE - M (r)	
SFT	
Saleable Area	2421
Carpet Area	1472
Balcony / Utility	238
BUILDING - 01 & 03	
TOWER - 04, 11, 12	
Level	19 <sup>th</sup> (Refuge Floor)



# M1<sup>R</sup> 4BED IMPERIA

4B+3T+HO



UNIT TYPE - M1 (r)	
SFT	
Saleable Area	2481
Carpet Area	1518
Balcony / Utility	238
BUILDING - 01	
TOWER - 03	
Level	19 <sup>th</sup> (Refuge Floor)



# Nr 4BED IMPERIA

4B+3T

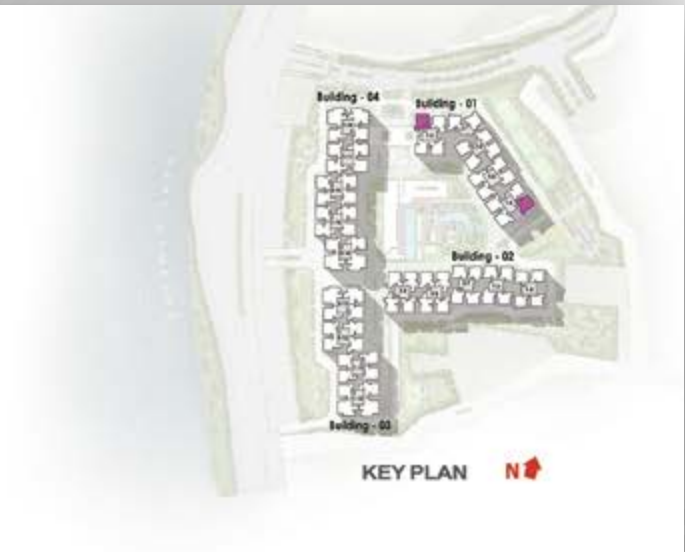


<b>UNIT TYPE - N (r)</b>	
	<b>SFT</b>
Saleable Area	2353
Carpet Area	1431
Balcony / Utility	246
<b>BUILDING - 02</b>	
<b>TOWER - 08 &amp; 09</b>	
Level	19 <sup>th</sup> (Refuge Floor)



# N1<sup>R</sup> 4BED IMPERIA

4B+3T+HO



UNIT TYPE - N1 (r)	
SFT	
Saleable Area	2482
Carpet Area	1525
Balcony / Utility	243
BUILDING - 01	
TOWER - 01 & 04	
Level	19 <sup>th</sup> (Refuge Floor)



# P<sub>R</sub> 4BED IMPERIA

4B+3T



UNIT TYPE - P (r)	
SFT	
Saleable Area	2501
Carpet Area	1526
Balcony / Utility	258
BUILDING - 03 & 04	
TOWER - 10, 14, 16, 17	
Level	19 <sup>th</sup> (Refuge Floor)



# U1R & U1RA\* 5BED AURUM SUITES

4B+4T+STUDIO



UNIT TYPE - U1 (r) & U1 (r) (a)	
SFT	
Saleable Area	3540
Carpet Area	2141
Balcony / Utility	386
BUILDING - 03 & 04	
TOWER - 13 & 18	
Level	19 <sup>th</sup> (Refuge Floor)

\*Combined Unit



**DELICIOUS MEMORIES  
SERVED HOT!**



*Artist's Impression*



# V<sub>R</sub> 4BED IMPERIA

4B+3T



UNIT TYPE - V(r)	
SFT	
Saleable Area	2490
Carpet Area	1494
Balcony / Utility	238
<b>BUILDING - 01</b>	
<b>TOWER - 03</b>	
Level	19 <sup>th</sup> (Refuge Floor)



# EXUBERANT LEISURE

All of 1,05,884 sft, the clubhouse at Prestige Raintree Park is one of the largest in Bengaluru. It presents for your pleasure the full spectrum of luxury recreational amenities that befit the lifestyle you are accustomed to.

Prestige Raintree Park has as many as three Swimming Pools, including a heated pool, a Tennis Court, a Futsal Lawn, a Basketball Court, a Skywalk, multiple mini water bodies and more.

These amenities are conveniently positioned on the ground level as well as on a landscaped podium on the first level.

This large open-to-sky arena is also a central community space for all residents.





THIS IMAGE IS FOR REPRESENTATIONAL PURPOSES ONLY



An aerial view of a modern residential complex. The image shows several multi-story buildings with balconies, interspersed with lush greenery, including palm trees and other tropical plants. A large swimming pool is visible, surrounded by a wooden deck with lounge chairs and umbrellas. The overall atmosphere is one of luxury and leisure.

A PICTURE  
OF LUXURIOUS  
LEISURE









PET PARK



FUTSAL  
LAWN



BILLIARDS



GYMNASIUM



AEROBICS  
/ YOGA  
ROOM



CAFE



MINI  
THEATRE




SPA



SWIMMING  
POOL



SALON



SQUASH  
COURT



CRICKET  
PITCH



TABLE  
TENNIS



EXTRAORDINARY  
AMENITIES







*Artist's Impression*

KEEP FIT IN STYLE!





*Artist's Impression*

COOL OFF WHEN THE HEAT IS ON!





*Artist's Impression*

SUNSHINE, BLUE SKIES AND COOL WATERS!





*Artist's Impression*

GRACIOUS SETTING FOR GREAT CONVERSATIONS!



SENSATIONAL  
AT SUNSET!



*Artist's Impression*



# SPECIFICATIONS

## STRUCTURE

- RCC Structure, Cement Blocks for Walls wherever needed.

## LOBBY

- All Lobby Flooring in Vitrified Tiles and Lift Cladding in Granite/Marble.  
All Lobby Walls in Textured Paint and Ceiling in Emulsion.
- Service Lobby, Service Corridor and Staircase in Kota/Tiles with Textured Paint on Walls.

## LIFTS

- Lifts in all Blocks of Suitable Size and Capacity.

## APARTMENT FLOORING

- Marble Flooring in Foyer, Living, Dining, Corridors, Family and Master Bedroom.
- Engineered Wooden Flooring in Other Bedrooms including Studio.
- Home Office in Vitrified Tiles.
- Master Toilet will have Marble on Floor and Walls up to False Ceiling.
- Other Toilets will be done with Ceramic/Vitrified Tiles.
- Balconies in Ceramic Tiles.

## KITCHEN & UTILITY

- Ceramic/Vitrified Tile Flooring.
- No Counter or Tile Dado will be provided.

## TOILETS AND FITTINGS

- Granite /Quartz for Counters with Counter-top Wash Basins, Wall Mounted EWCs.
- Shower Panel in Master Toilet.
- Glass Partitions in all Toilets with high quality Chrome Fittings.
- Geysers in all Toilets.
- Mirrors in all Toilets with CP Accessories.

## PAINTING

- Cement /Texture Paint for External Walls.
- Emulsion for Internal Walls and Ceiling.

## DOORS AND WINDOWS

- Unit Main Door - 8 feet high with Timber Frame and Shutter.  
Polished on both sides.
- Internal Doors - 7 feet high with Timber Frames and Laminated Flush Shutters.
- External Doors - UPVC/Aluminium Frames and Sliding Shutters or a combination of both wherever required.
- Windows - UPVC/Aluminium Frames, Clear Glass and provision for Mosquito Mesh Shutter only.

## ELECTRICAL

- Concealed Wiring with PVC Insulated Copper Wires and Modular Switches.
- Sufficient Power Outlets and Light Points provided.
- Telephone Points provided in the Living Room and Kitchen only.
- TV Points provided in the Living Room and all Bedrooms.
- Provision for installation of Split AC in the Living Room and all Bedrooms.

## SECURITY SYSTEMS

- Security Cabins at all Entry/Exits with CCTV Coverage
- Intercom Facility for all Apartments.

## DG POWER

- Generator will be provided for all Common Areas.


## ITEMS AT ADDITIONAL COST

- DG POWER – 100% Backup for all Apartments at Additional Cost.







A scenic view of a lake with pink flowers in the foreground and a blue sky with clouds. The text is centered over the image.

MAJESTICALLY  
TOWERING OVER THE  
TRANQUIL WATERS.





• HOMES • OFFICES • SHOPPING MALLS • HOTELS • INTERIORS • WAREHOUSING •

Bengaluru | Chennai | Goa | Hyderabad | Kerala | Mangaluru | Delhi-NCR  
Mumbai | Ahmedabad | Dubai Sales Office

**Prestige Estates Projects Limited**

Prestige Falcon Towers, No.19, Brunton Road, Bengaluru - 560025, Karnataka, INDIA.  
Ph: +91-80-25591080. E-mail: [properties@prestigeconstructions.com](mailto:properties@prestigeconstructions.com). [www.prestigeconstructions.com](http://www.prestigeconstructions.com)

International Sales Office: [dubai@prestigeconstructions.com](mailto:dubai@prestigeconstructions.com)

**Prestige Raintree Park**

SH 35, Whitefield Main Road, Varthur, Bengaluru, Karnataka 560087

This brochure is conceptual and has been prepared based on the inputs provided by the Project Architect. This may vary during execution. The Promoter reserves the right to change, alter, add or delete any of the specifications mentioned herein based on site conditions and construction exigencies without prior permission or notice. The external color schemes and detailing of landscape may vary as may be suggested by the Architect considering the site conditions.

The furniture shown in the plans is only for the purpose of illustrating a possible layout and does not form a part of the offering or specifications. All Apartment interior views do not depict the standard wall, color & ceiling finishes and are not part of the offering.

Further, the dimensions mentioned do not consider the plastering thickness and there could be marginal variation in carpet areas.

