

“Present Investment for Future Happiness”



# Krishna Tower

Krishnalok, Kanpur Road lucknow



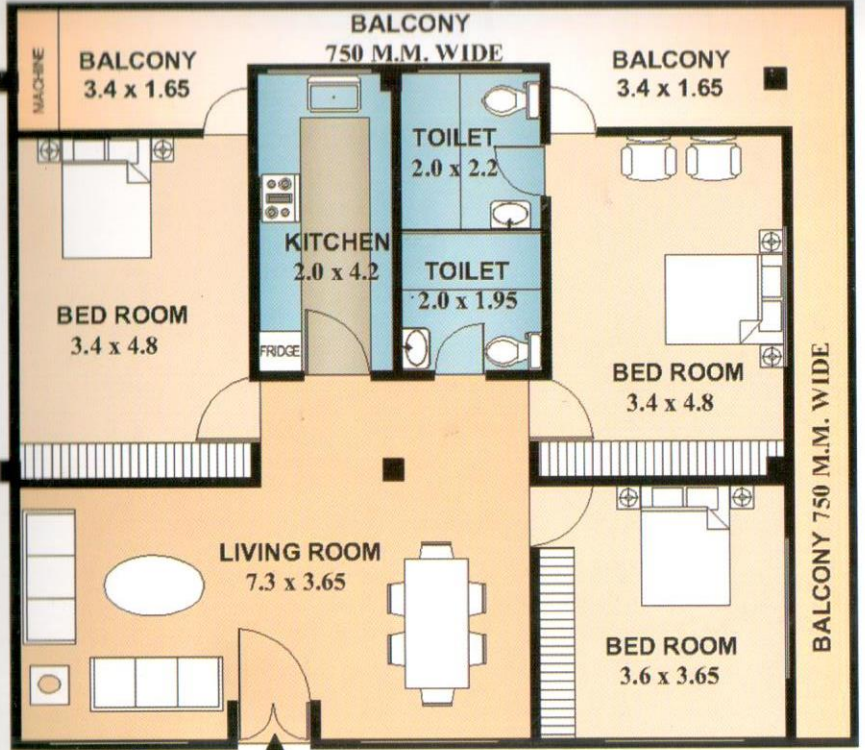


## Typical Floor Plan

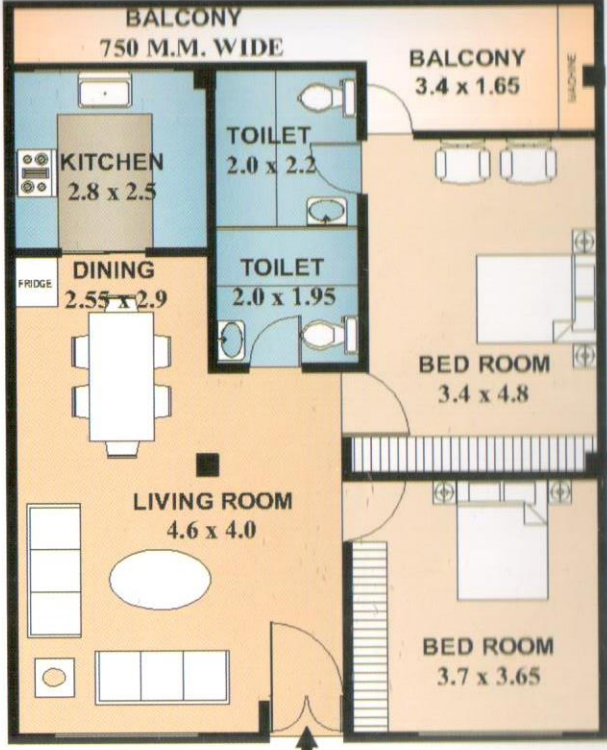
### Key Features

- ✔ Strategically located on the lucknow kanpur Highway.
- ✔ In close proximity to Lucknow International Airport
- ✔ 12 km from charbagh railway station.
- ✔ Earthquake safe steel structure.
- ✔ Vaastu shastra friendly.
- ✔ Large spacious & ventilated rooms with vitrified tile floors, hot & cold water pipelines.
- ✔ Each unit connected to security room through intercom.
- ✔ 24 Hours water supply.
- ✔ Rain water harvesting.
- ✔ Adequate car parking space.
- ✔ Fire fighting system as per norms.
- ✔ Efficient power distribution network
- ✔ Two passenger lifts.
- ✔ Generator for power back up.

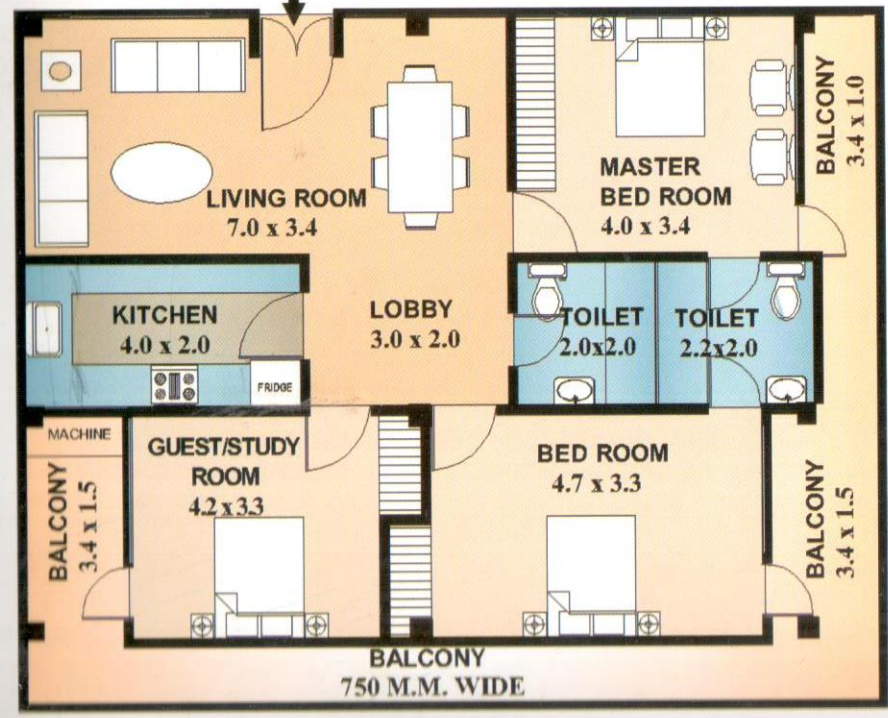




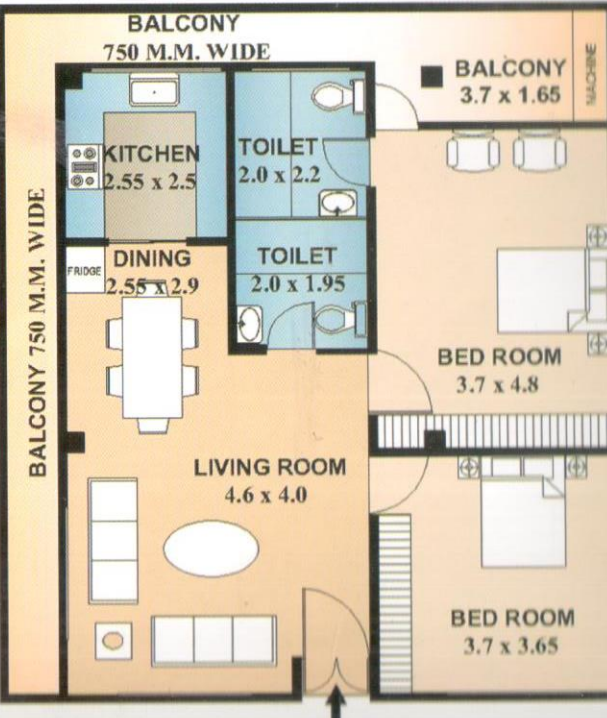
← **Unit No.=102**  
**3 BHK**  
 Area=160 Sq. Mt.



**Unit No.=107**  
**2 BHK**  
 Area=110 Sq. Mt.

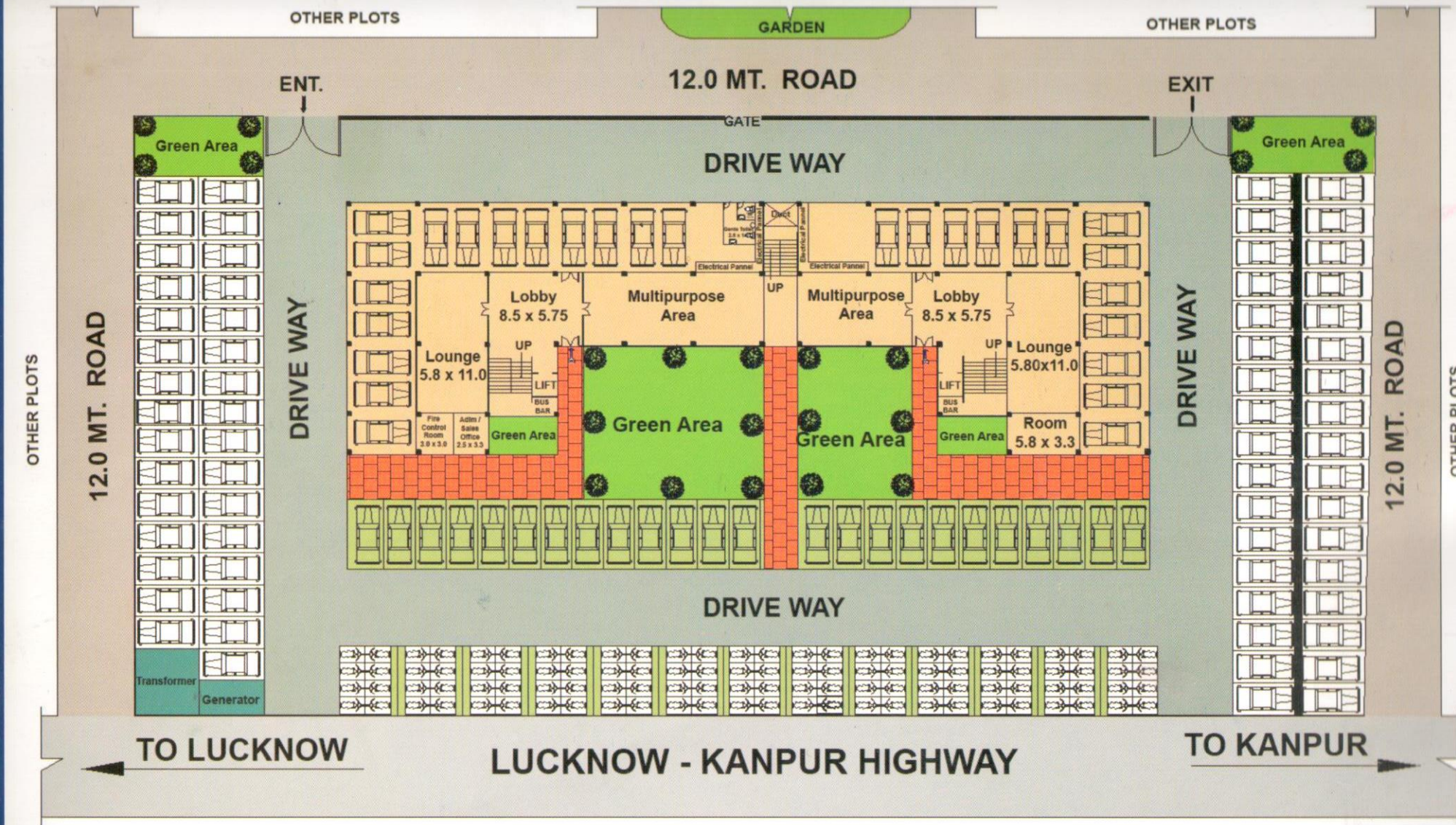


← **Unit No.=101**  
**3 BHK**  
 Area=145 Sq. Mt.



**Unit No.=108**  
**2 BHK**  
 Area=125 Sq. Mt.





## Shri Krishna Colonisers

📍 - 103-Kalyan Garden View, 24/CP-101, Indira Nagar, Lucknow

✉ - [krishnacolonerstvtltd@rediffmail.com](mailto:krishnacolonerstvtltd@rediffmail.com)

☎ - +91-9335291051, 9305291052, 9305226049, 9305226045

🌐 - [www.krishnacoloner.com](http://www.krishnacoloner.com)

Ⓜ All Specifications are tentative subject to change & modification.