



luxury in bloom.





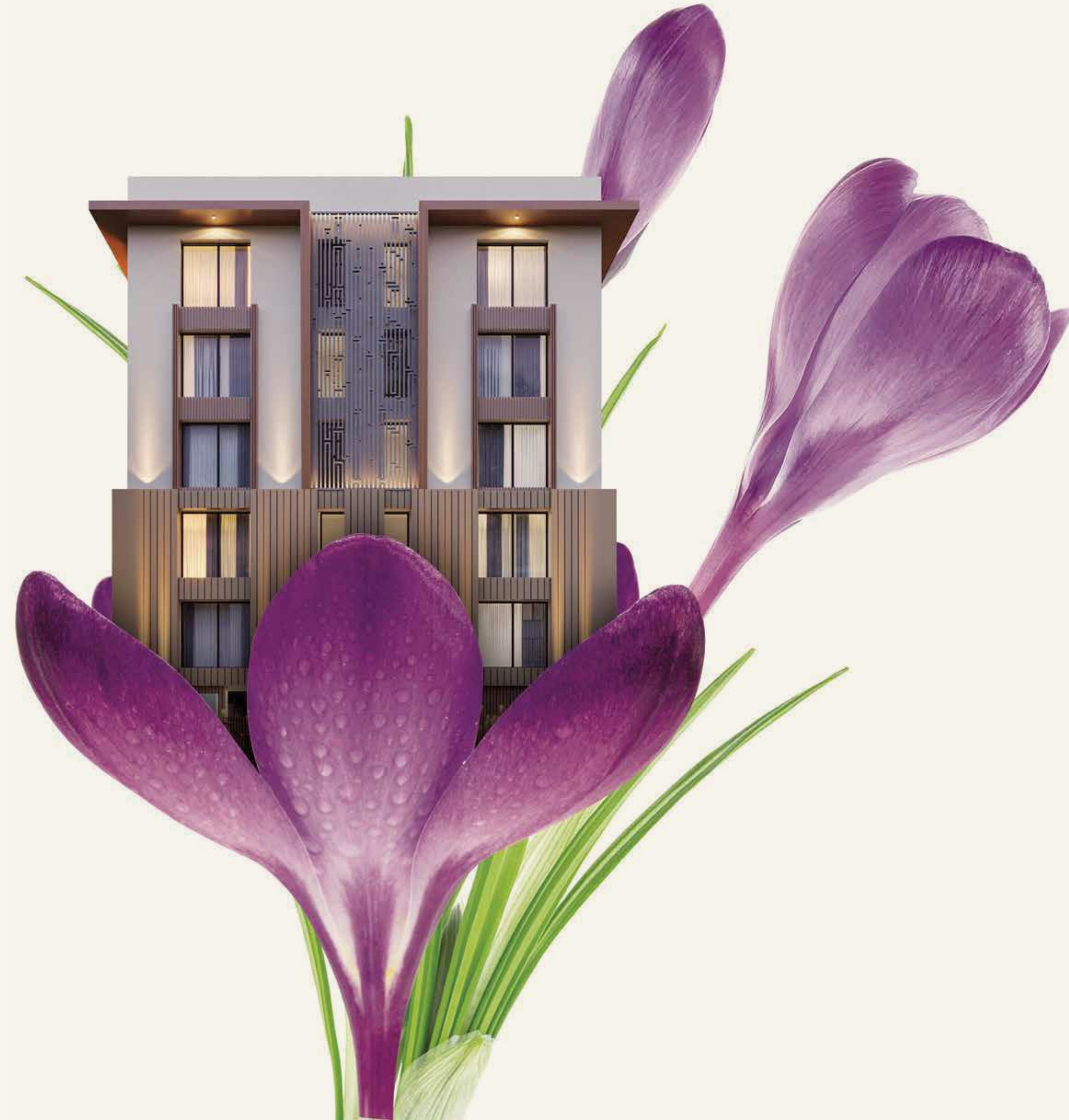
Λ M Ā R Λ
ARADHYA
— Kothari Road —



LIFE BLOOMS IN
absolute luxury.

At Amara, we have always believed in curating spaces that are alive and blooming. Over a decade of creating expressive works of art in prime localities, Amara has pushed the envelope in terms of absolute luxury. Tradition meets modern living at Amara.





HOMES THAT MAKE THE
heart blossom.

Introducing Aradhya, where every experience of life is treated as sacrosanct. Effortlessly elevating your lifestyle with top-notch fixtures and finishes, each home is sumptuously designed to delight with unmatched comfort and eclectic ambience.

5 levels | 10 premium apartments

Fully air-conditioned homes | 24/7 CCTV surveillance

IoT-enabled Smart Homes

Landscaped terrace pavilion with party deck

Imported water heating system for 24/7 hot water





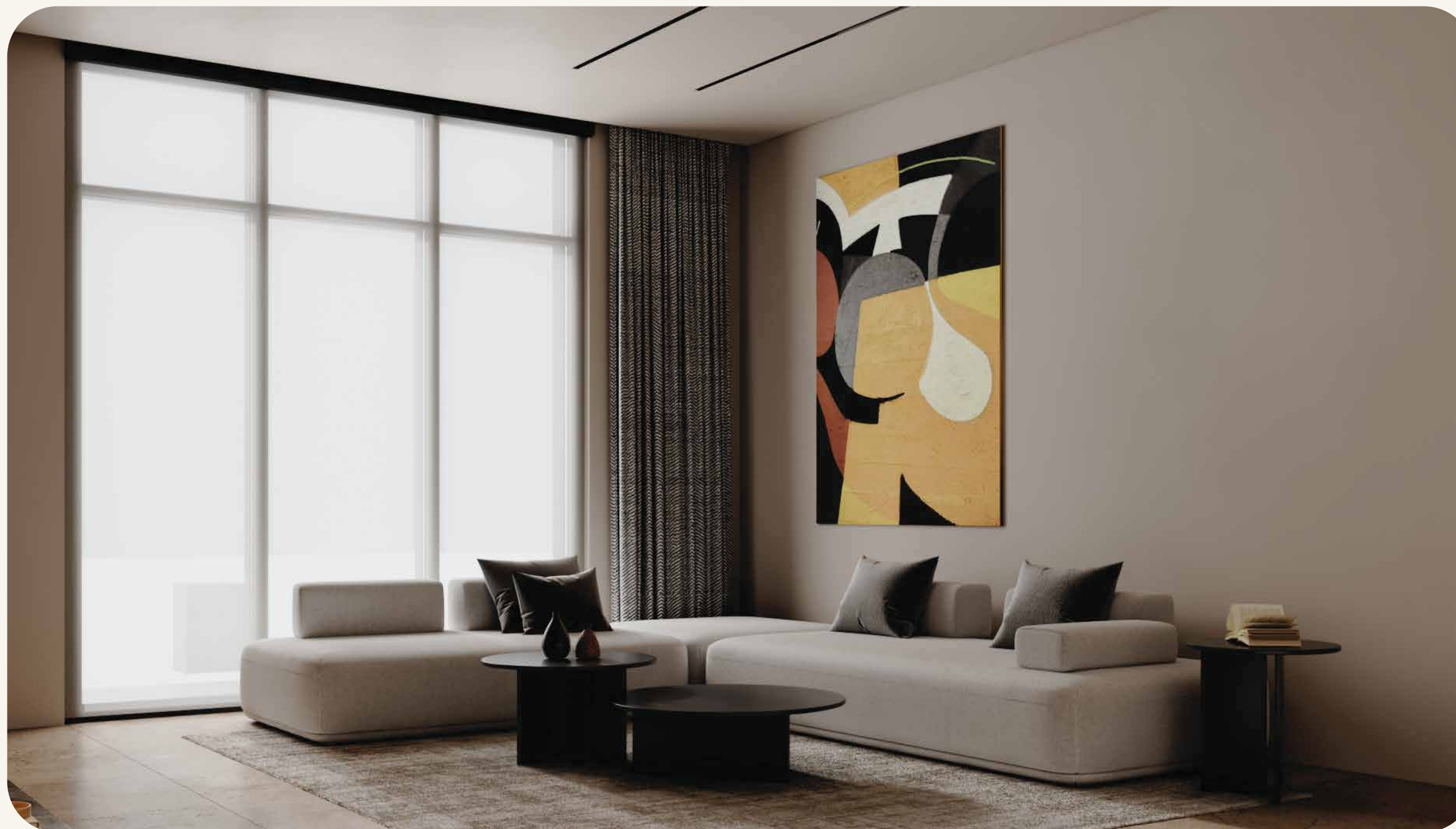
PRIDE AND PRESTIGE
FLOWERS AT THE

heart of the city.

Spread across 5 floors and tucked away in an evergreen lane,
Aradhya is seamlessly connected to everything the heart
yearns for. It is the beating heart of the prestigious Kothari Road,
standing among the best of everything the city has to offer
from culture and commerce, healthcare and hospitality
to dining and education avenues.



LIFE AT
Amara







Fully air-conditioned homes.



24/7 CCTV surveillance.



Imported water heating system for 24/7 hot water.



Landscaped terrace pavilion with party deck.

Lap of luxury.

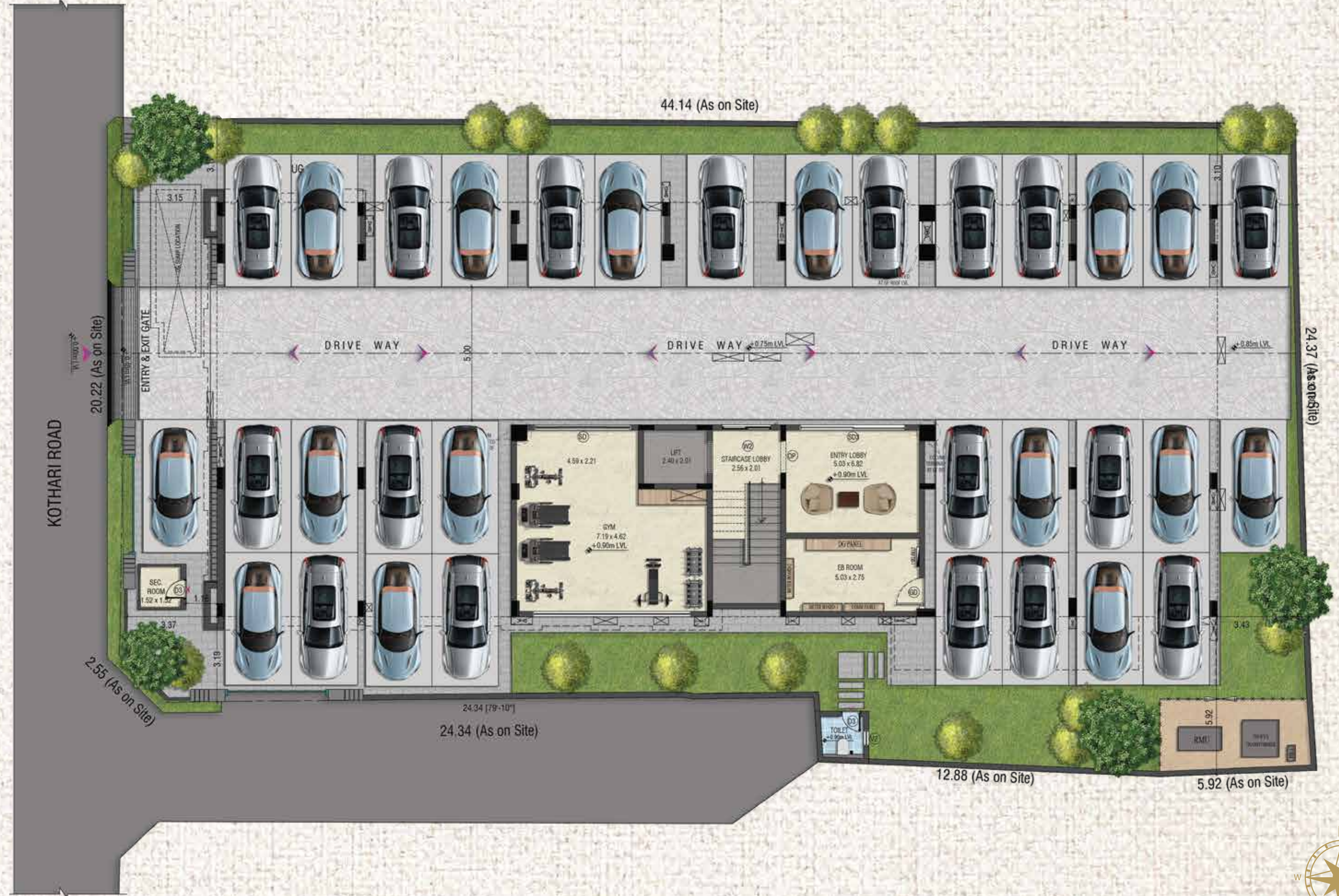
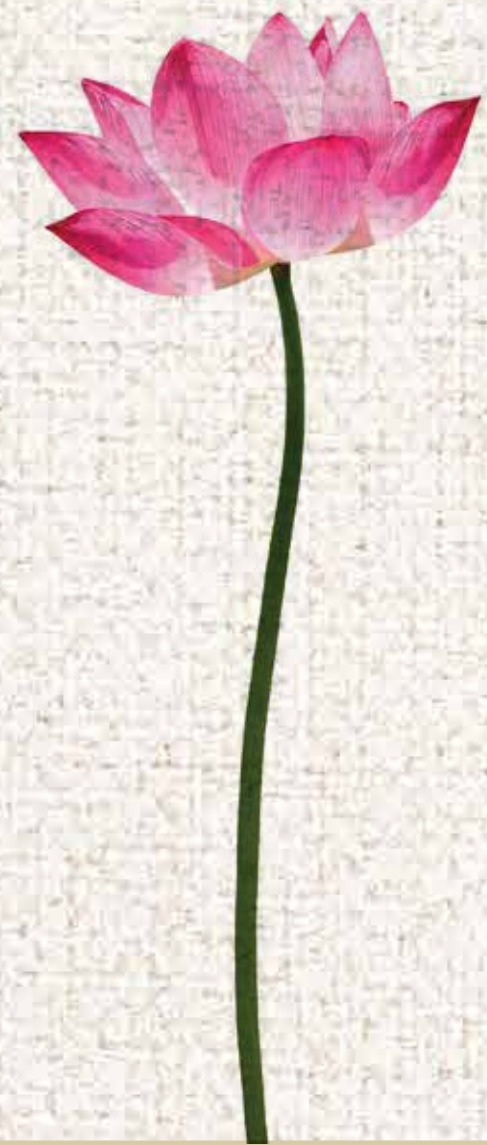


Map not to scale



Stilt

FLOOR PLAN



First

FLOOR PLAN



Second

FLOOR PLAN



UNIT - 2A
EAST FACING
SALEABLE AREA : 3758 SFT

UNIT - 2B
WEST FACING
SALEABLE AREA : 3262 SFT



Third

FLOOR PLAN



UNIT - 3A
EAST FACING
SALEABLE AREA : 3758 SFT

UNIT - 3B
WEST FACING
SALEABLE AREA : 3375 SFT



Specifications

STRUCTURE

R. C. C. framed structure.
Designed - Seismic-resistant structure - Zone III.
Conformed - IS code 456 specification.

WALL

Solid block work.
Internal and external - Plastered wall.

FLOORING

Imported marble in living and dining rooms.
Imported marble in bedrooms.
Double-charge polished vitrified tiles in the kitchen.
Heavy duty outdoor vitrified tiles in balconies and utilities.

DADOING

Full height vitrified tiles in toilet wall.
Anti-skid tiles in toilet and utility floor.

DOORS

Main/entrance door - 7' 6" Hardwood frame and shutter with veneer panelling on both sides with Yale digital smart lock.
Bedroom door - 7' 6" first-quality engineered door frame and shutter with veneer finish and Yale Mortise lock.
Toilet and other internal doors - 7' 6" first-quality engineered door frame and shutter with laminate finish and Yale Mortise lock.

WINDOWS & SIT OUT

Saint-Gobain UPVC wood finish windows.

C. P. FITTINGS & SANITARYWARE

Grohe/Hansgrohe/Duravit/equivalent fittings.
WC - wall mounted with concealed cistern and health faucet.
Stiebel Eltron Online Geyser in all bathrooms.

ELECTRICAL

3-phase supply.
100% generator backup.
Legrand - Living Now - IoT-enabled switches & sockets with modular plates, MCB & ELCB.
TV, telephone and data points provided.

AIR-CONDITIONING

Mitsubishi/equivalent - VRF System air-conditioning.

FALSE CEILING & LIGHT FITTINGS

Saint-Gobain Gypsum false ceiling with architectural light fixtures for all areas.

PAINTING & FINISHES

Internal wall - 2 coat putty with water-based Royale Luxury Emulsion.
External wall - Waterproof base coat with Asian Ultima Apex/equivalent.
Ceiling - 2 coat putty with water-based premium emulsion.

RECREATIONAL FACILITIES

Fully-equipped gymnasium.
Furnished lobby entrance.
Landscaped terrace with party deck and barbeque pit.

COMMON AREAS

Gas bank.
Mitsubishi/equivalent - 1 no. passenger lift.
Imported marble on all floors - lobby areas and lift wall cladding.
Granite finish staircases.
CCTV surveillance.
Motorized entry/exit gates.
SS handrails on staircases.
False ceiling with COD lights in all lobby areas.
Rainwater harvesting.
Separate lines for Metro water and ground water.
UG Sump and OHT provision.
Solar-powered common areas.
100% generator backup.



^ M ^ R ^ homes

 +91 94446 66677  life@amarahomes.in

 www.amarahomes.in

RERA NO.: TN/29/BUILDING/0257/2022 | DATED 08.07.2022 | WWW.RERA.TN.GOV.IN