



P A R A M
FOR ICONIC LIVING

Promoted by



VAMAJA REALTY Pvt Ltd

SITE ADDRESS

Anbunagar 1st street,
Kaviarasu Kanadasan street,
Valasaravakkam,
Chennai - 600095.

OFFICE ADDRESS

No.2, 1st cross street,
Achuthan Nagar,
Ekkatuthangal,
Chennai- 600032.

☎ 04449495060

📞 9500040678

✉ info@vamaja.com

🌐 www.vamaja.com



ABOUT PARAM

PARAM is emerging as prestigious landmark well connected by roads and rails and it is designed to fulfill its promise of being endearing lifestyle and meritorious asset.

PARAM consists 15 units of 2 bedroom apartment. It offers crafted living spaces that are comfortable and well planned with vastu compliance. The design quenches all your desires like spatial car parking, kids play area and palatial apartment spaces.

PARAM poised to give you a golden opportunity as a beautiful home for your family and future.

“Tranquility inside, City adventures outside, Discovered both at PARAM”



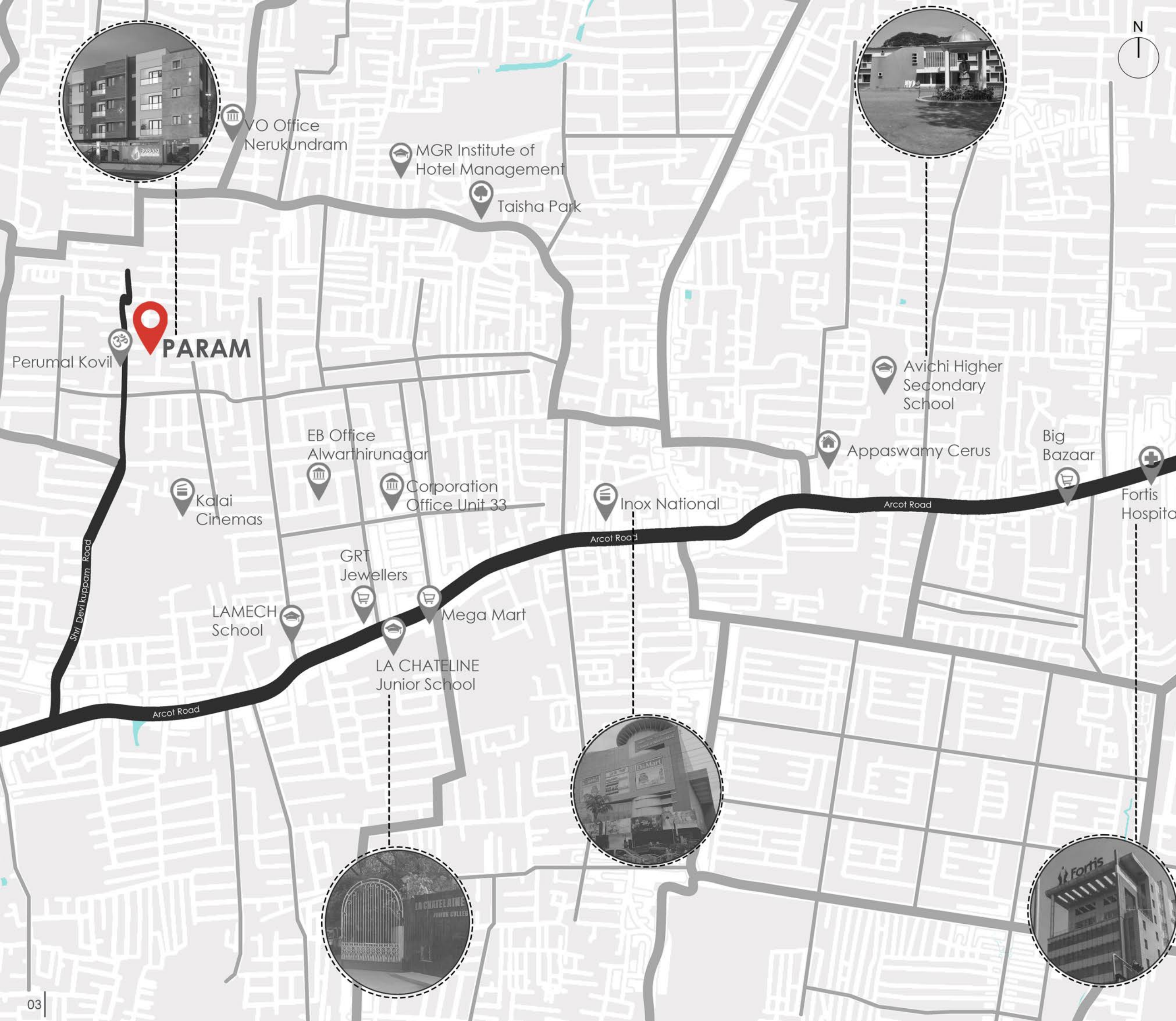
ABOUT VAMAJA

VAMAJA Realty Pvt Ltd is formerly known as RRT Constructions, a part of Vamaja Group established in 1983, Ever since its inception, with customer centric philosophy propelled by the drive to create a better experience in an era marked by high standards of living, VAMAJA's professional team with decades of expertise in the realm of real estate has successfully promoted three CMDA approved layouts spread over 3,00,000 (three lakhs) sft of land and construction of residential apartment over 60,000 Sq.Ft

We have delivered Six residential apartment projects and CMDA approved Plots in committed time within budgets making our customers delight a reality.

Our personalized passion for excellence implements insights to every detail starting from hassle free legal titles, floor plans as per ancient vastu science, stout structural design-to-Cost optimization, sourcing quality construction material and scrupulous workmanship to give maximum value for money to its customers.

Our Management believes in Team work and has developed a team of Renowed Architects and well trained staff and Labours who are driven to serve customers with Quality.



Nearby locations:

Transit _____

- Vadapalani Bus Depot
- Vadapalani Metro
- Koyambedu Bustand
- Valasaravakkam Metro

Institutional _____

- Avichi Hr Sec School
- Meenakshi College for Women

Health Care Centres _____

- Soorya Hospital
- Vijaya Hospital
- Fortis Hospital
- SIMS
- Best Hospital
- Ramachandra Medical College

Commercial _____

- Saravana Stores
- Big Bazaar
- Forum Vijaya Mall

Worship _____

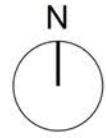
- Vadapalani Murugan Temple

Tech Parks _____

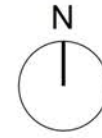
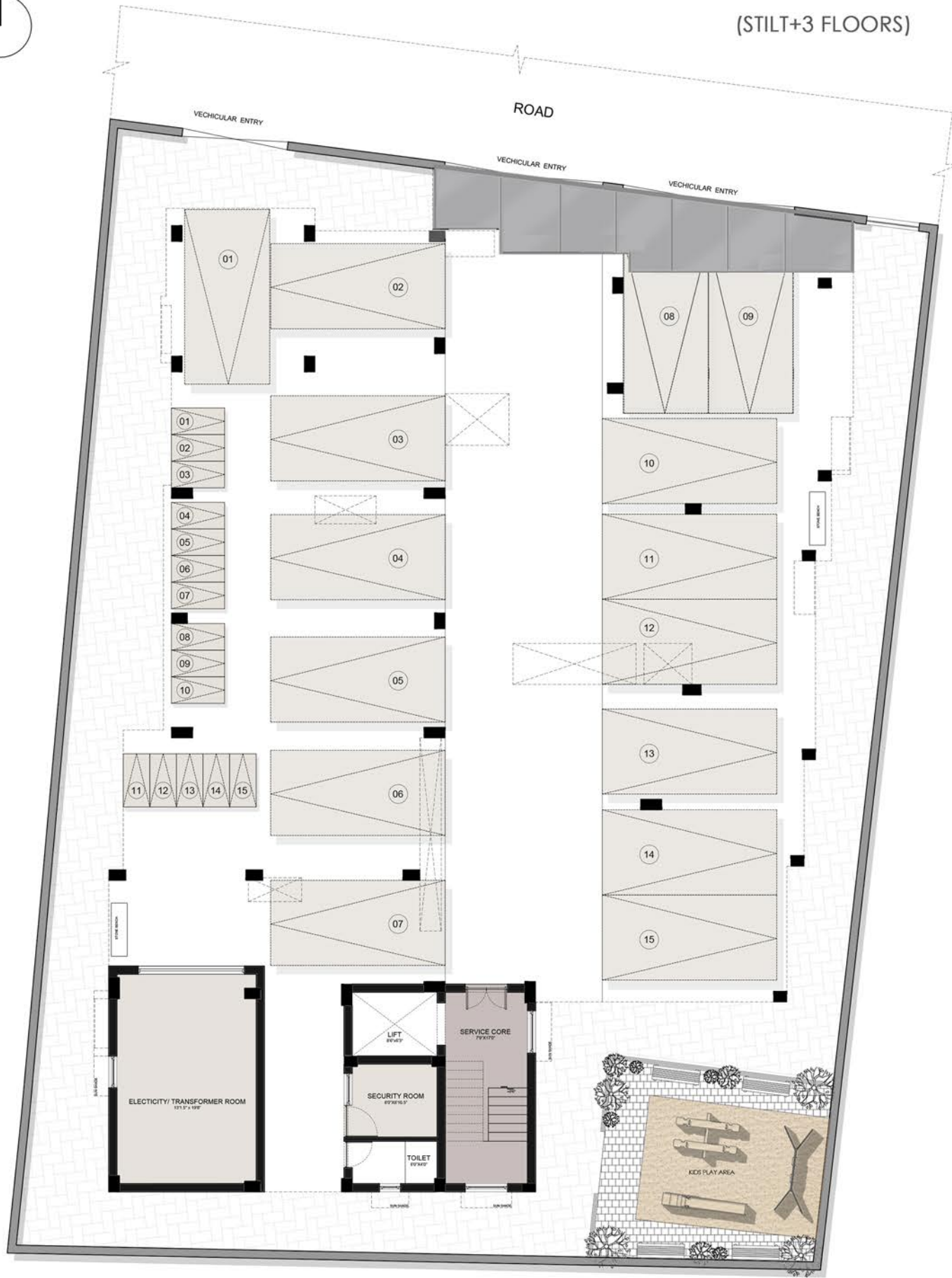
- L&T Infotech
- DLF IT Park
- Chennai Trade Centre

CMDA approval P.P No: 14180/2021
 RERA Reg. No:TN/29/Building/0100/2022





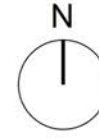
STILT FLOOR PLAN
(STILT+3 FLOORS)



TYPICAL FLOOR PLAN
(STILT+3 FLOORS)



ISOMETRIC VIEW



KEY PLAN



UNIT 1

F1, S1, T1



AREA STATEMENT

Floor	Built-up area	Carpet area	Super built-up area
F1	842 sq.ft	747 sq.ft	975 sq.ft
S1	842 sq.ft	747 sq.ft	975 sq.ft
T1	842 sq.ft	747 sq.ft	975 sq.ft

ISOMETRIC VIEW



UNIT 2

F2, S2, T2

KEY PLAN



AREA STATEMENT

Floor	Built-up area	Carpet area	Super built-up area
F2	892 sq.ft	796 sq.ft	1033 sq.ft
S2	892 sq.ft	796 sq.ft	1033 sq.ft
T2	892 sq.ft	796 sq.ft	1033 sq.ft

ISOMETRIC VIEW

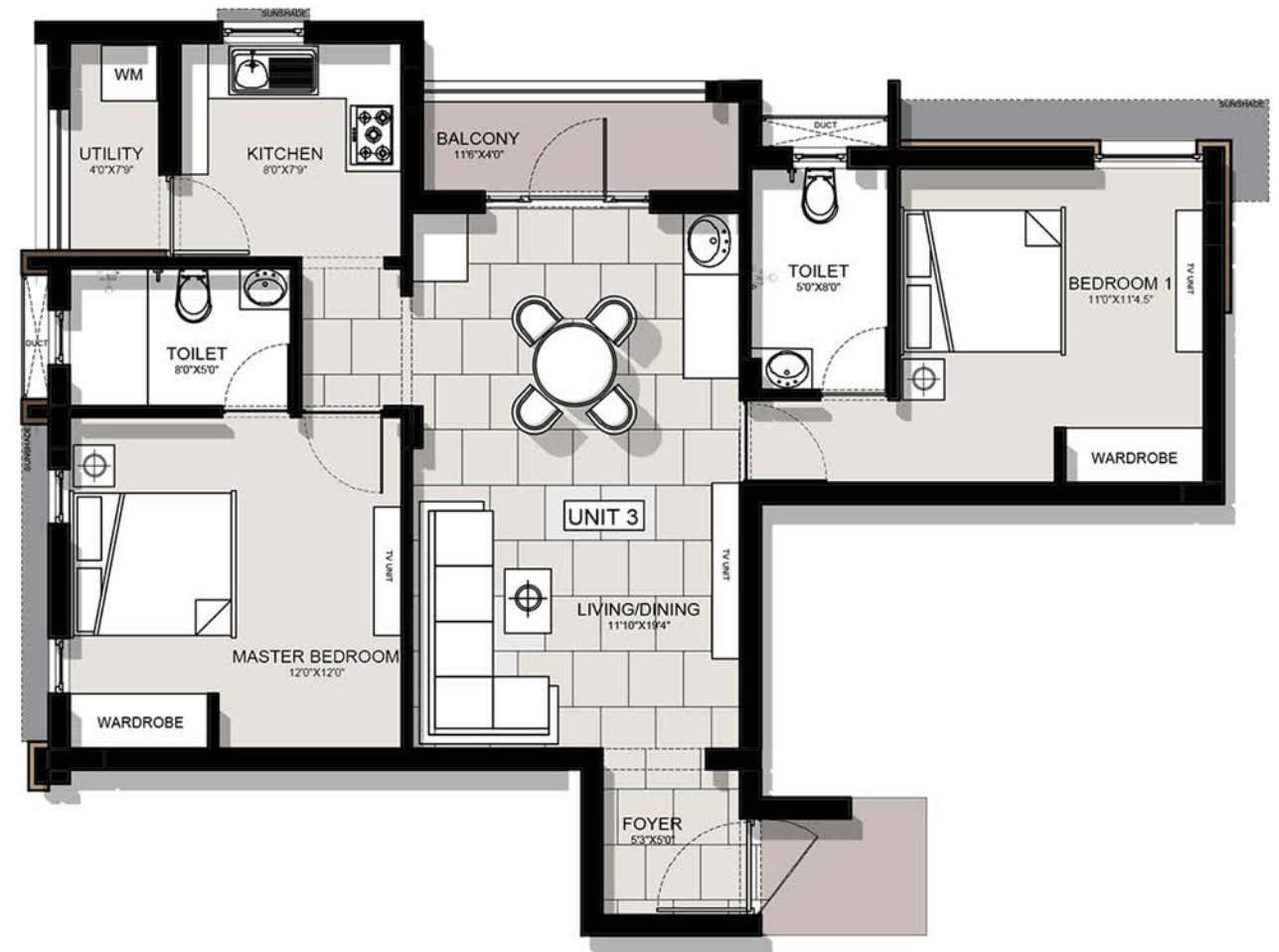


KEY PLAN



UNIT 3

F3, S3, T3



AREA STATEMENT

Floor	Built-up area	Carpet area	Super built-up area
F3	886 sq.ft	786 sq.ft	1026 sq.ft
S3	886 sq.ft	786 sq.ft	1026 sq.ft
T3	886 sq.ft	786 sq.ft	1026 sq.ft

ISOMETRIC VIEW



UNIT 4
F4, S4, T4

KEY PLAN



AREA STATEMENT

Floor	Built-up area	Carpet area	Super built-up area
F4	891 sq.ft	795 sq.ft	1032 sq.ft
S4	891 sq.ft	795 sq.ft	1032 sq.ft
T4	891 sq.ft	795 sq.ft	1032 sq.ft

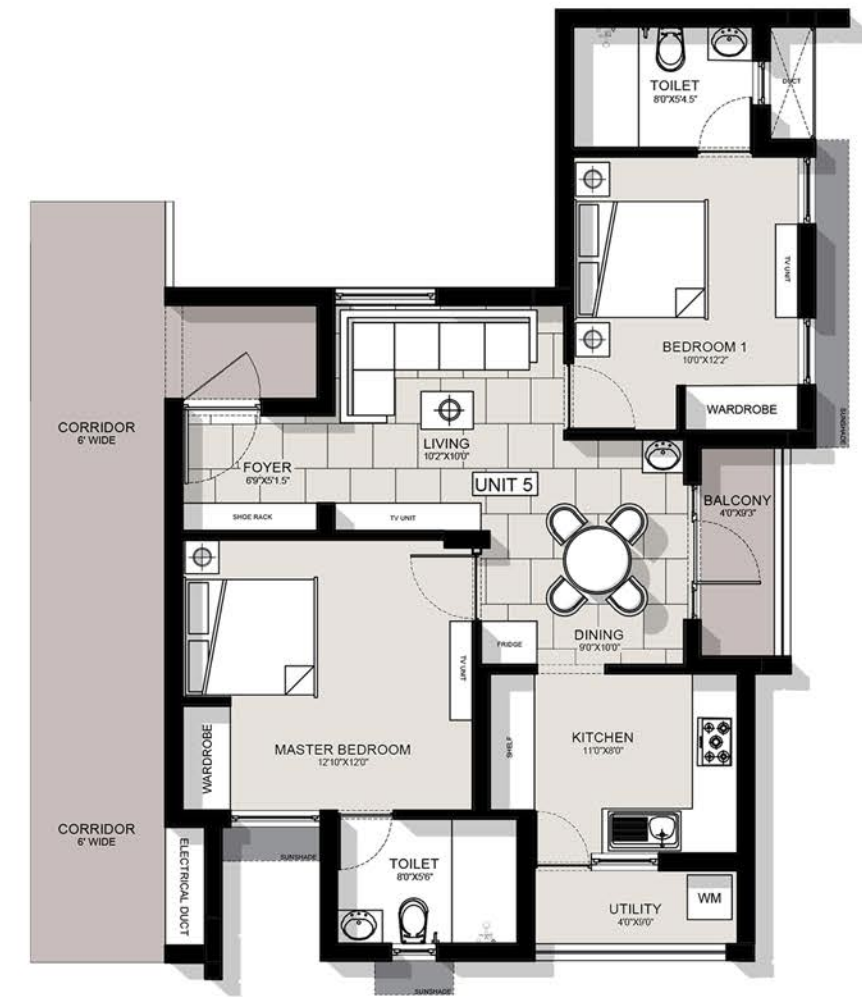
ISOMETRIC VIEW



UNIT 5

F5, S5, T5

KEY PLAN



AREA STATEMENT

Floor	Built-up area	Carpet area	Super built-up area
F5	847 sq.ft	745 sq.ft	981 sq.ft
S5	847 sq.ft	745 sq.ft	981 sq.ft
T5	847 sq.ft	745 sq.ft	981 sq.ft



SPECIFICATIONS

STRUCTURE

- RCC Framed Structure
- Conventional Brick Walls
- Anti - Termite Treatment

FLOORING

- LIVING : Vitrified Tiles
- BALCONY : Anti-skid Ceramic Tiles
- STAIRCASE : Granite
- UTILITY : Anti-skid Ceramic Tiles
- LIFT : Granite
- CORRIDOR : Vitrified Tiles

JOINERY

- MAIN DOOR : Panel Door with Veneer finish
- WINDOW : UPVC
- BEDROOM : Solid Flush Door
- BATHROOM : Flush Door
- BALCONY : UPVC sliding Door

ELECTRICAL

- 3 Phase Electricity Connection
- Metal Switch box / Modular Switch
- Inverter Complaint wiring
- Generator backup for common areas

PAINTING

- EXTERIOR : APEX Paint / Texture Paint
- INTERIOR : Putty with premium emulsion
- WINDOW GRILLS : Enamel paint

KITCHEN

- Polished black Granite Counter Top
- Glazed Ceramic Tiles
- SINK : Designed series SS Singled bowl - Matt finish

SECURITY

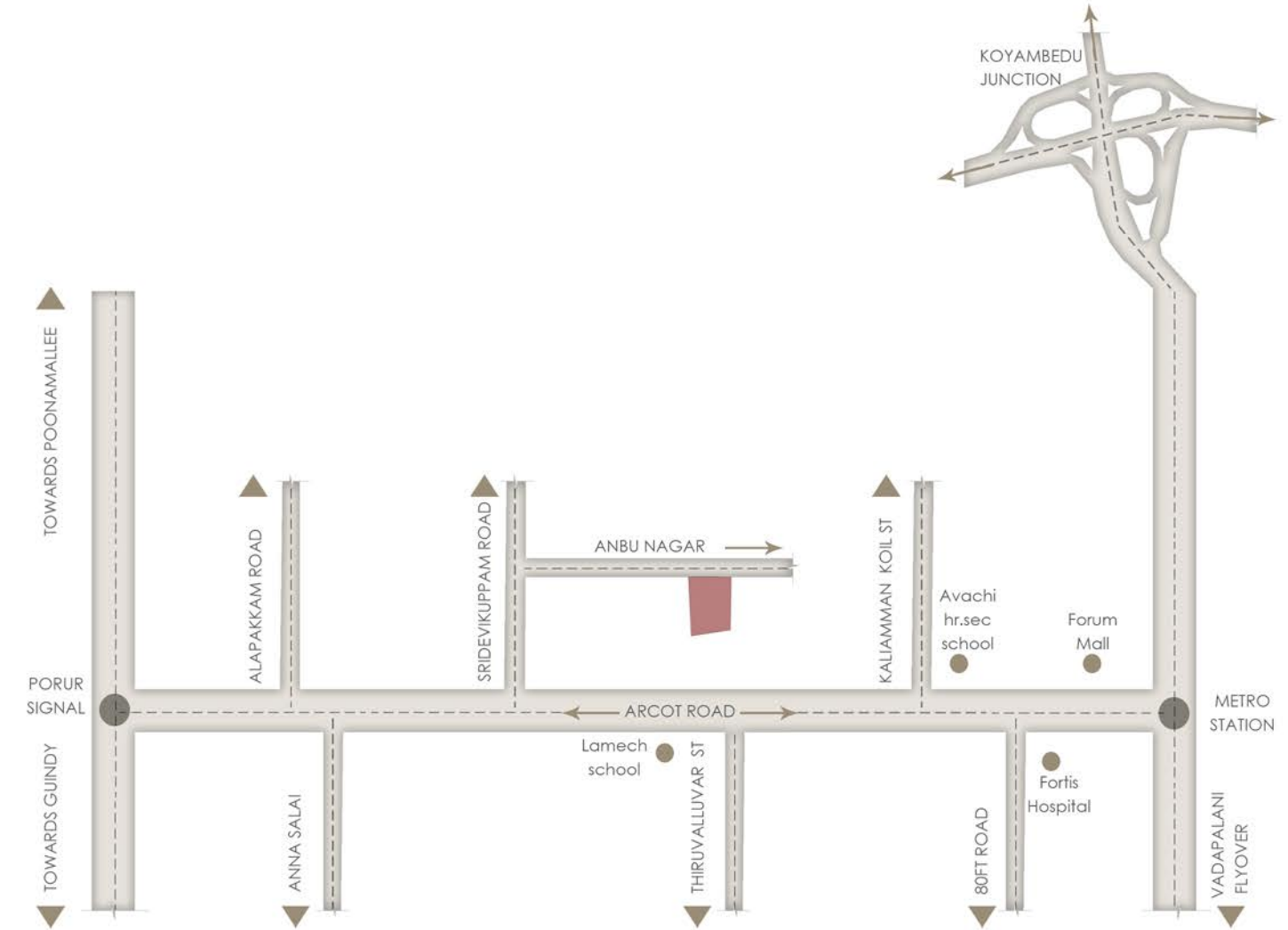
- CCTV
- Video door phone system
- Intercom Facility

PLUMBING

- CP FITTING : Parryware / Equivalent
- SANITARY FITTING : Parryware / Equivalent



LOCATION MAP



CMDA approval P.P No: 14180/2021

RERA Reg. No:TN/29/Building/0100/2022

SPECIAL AMENITIES

- Power Backup 
- CCTV Camera 
- Covered Car Parking 
- Vasthu compliance 

- Children's play area 
- Video Door Phone 
- Lift 
- 24/7 Security 