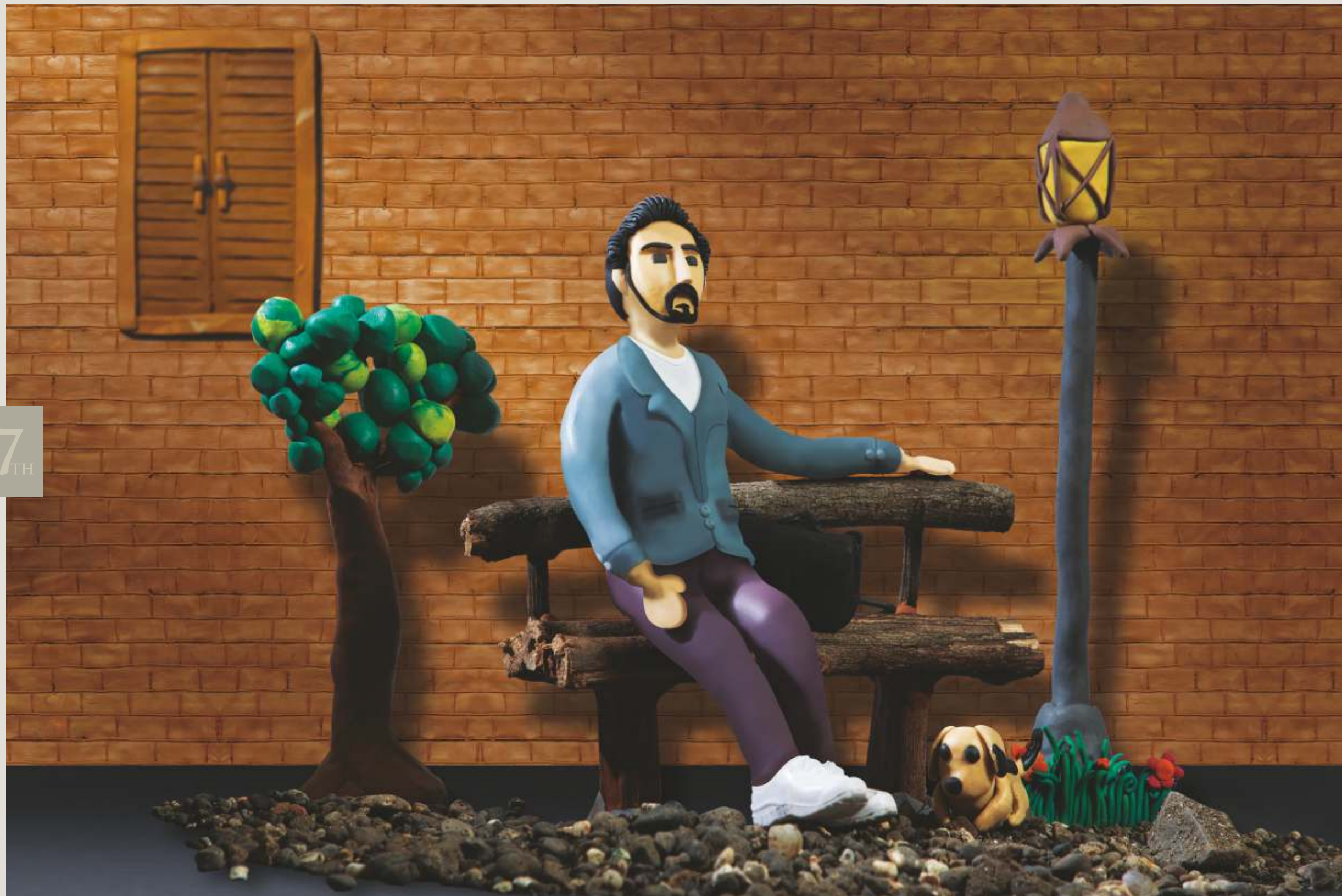




*Ghar jo  
Kheench laaye...*

27<sup>TH</sup>



# 27<sup>TH</sup> AVENUE

2/3 BR Pragmatic Homes

GHAR JO KHEENCH LAAYE...

It isn't just a cluster of pragmatic homes but a feeling that has a magnetic effect. Wherever and however for you might go, you will yearn to come back. Awesome ambience of Bavdhan, free-flowing breeze, amazing terrace lounge - **ZEN ARENA** and a convenient location will enchant you for sure.

Home coming was never so ecstatic.

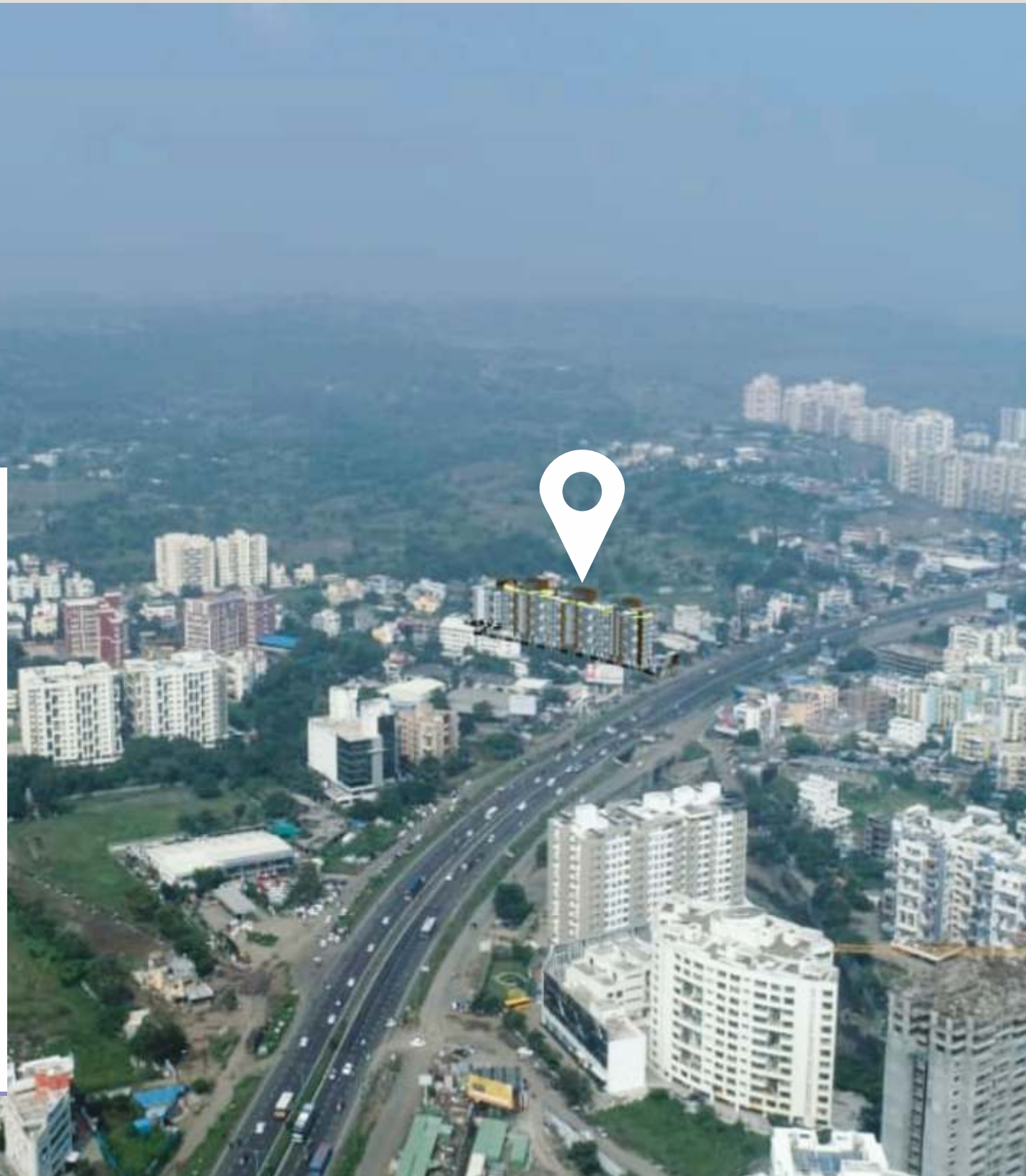
**Welcome to 27TH AVENUE!**

27<sup>TH</sup>

27<sup>TH</sup>

## BAVDHAN. THE URBAN HEAVEN!

Location! Now, this is one of the significant aspects you look for while choosing a home. 27TH AVENUE is located in Bavdhan, a place that has gained popularity in the last few years. Bavdhan is blessed with a brighter tomorrow and your home at 27TH AVENUE will be revered as a smart investment you have ever made as it is already appreciating fast. Encircled by the greens, it has been blessed by modernity and easy connectivity. Right from marketplaces to workspaces, restaurants and hospitals, Bavdhan has it all to make your life more rewarding & relaxing. Urban and Heaven are no more oxymorons!



27<sup>TH</sup>

## CONNECTIVITY THAT KEEPS YOU BOUND TO THE CITY



The location of 27TH AVENUE is quite ideal for a better connectivity. Residing in Bavdhan, you can easily travel back and forth to prime locations of the city like Aundh, Baner, Hinjawadi, Kothrud, Paud Road. It saves your travel time which you can spend with your loved ones at home. Also, it is quite close to the Mumbai-Bengaluru bypass and at a convenient distance from the Pune-Mumbai Expressway. The picturesque way down to Konkan is just around the corner as Chandani Chowk is a 5 minutes drive from here. A proposed Ring Road and a Metro commute is quite near from 27TH AVENUE. Such unmatched connectivity is yet another reason to get attracted to 27TH AVENUE.



## PRIME LOCATIONS IN THE RADIUS



## CREATED AROUND YOU

Your home at 27TH AVENUE boasts of thoughtful design. It enables you to avail maximum usable space. The 3-side open design gives you the unobstructed scenic sight of surroundings and superb ventilation to keep you fresh all the time. This translates to the space for things you love and the space your mind deserves as well. Everyone in the family is sure to find his own favourite corner in the home for sure. Come home to 27TH AVENUE!



27<sup>TH</sup>

27<sup>TH</sup>

# EMBRACE A SOOTHING ZEN LIFESTYLE

Yoga Lawn, Sunrise & Sunset Pavilion,  
Semi Covered Party Area, Organic Farming  
Zone, Amphitheatre, Leisure Sit-outs, Skywalk.  
Everything's on a rooftop!

27<sup>TH</sup>



# TOGETHERNESS IN THE AIR

*Rooftop Artistic Impression*

27<sup>TH</sup>

**LEISURE WAS  
NEVER THIS  
GRAND BEFORE**



## **A ZEN LIFESTYLE FOR YOUR PEACE OF MIND!**

Inspired by the rich Japanese culture, 27TH AVENUE bestows upon you an exclusive Zen Lifestyle. In this chaotic and hasty routine, a calmer life has lost somewhere. At 27TH AVENUE, we bring to you an exclusive Zen Arena on rooftop where you can indulge in tranquillity and bring back your peace of mind. Exclusive rooftop amenities like Yoga Lawn, Sunrise and Sunset Pavilion, Leisure Sit-outs, Skywalk and many more will make your life healthier and happier. You can breathe in purity in the true sense.



*Rooftop Artistic Impression*



**AS SEEN FROM  
A BIRD'S EYE...**

Sunset Pavilion

Amphitheatre

Organic Farming Zone

Sunrise Pavilion

Wing D  
(Proposed)

Wing  
C

Wing  
B

Wing A  
(Proposed)

Leisure Sit-outs

Yoga Lawn

Skywalk

Yoga Lawn

Semi Covered Party Area



**GHAR JO  
KHEENCH LAAYE...**

27<sup>TH</sup>



## 27TH AVENUE AT A GLANCE!

27TH AVENUE is a project that sets the bar for pragmatic homes! It's a place where you can truly lead a better life and indulge in an opulent living that comes with all the daily facilities and easy connectivity to prime places in the city. Thoughtfully designed and immaculately executed abodes give you ample space and good ventilation to keep you fresh all the time. Experience the pride of exclusive living.



*Artistic Impression*



## KEY ATTRactions



**MULTIPURPOSE HALL  
WITH INDOOR GAMES**



**PARTY LAWN**



**LEISURE SITTING  
AREA**



**GYMNASIUM**



**DESIGNER  
ENTRANCE LOBBY**



**SPIRITUAL/YOGA  
COURT**



**SECURITY CABIN  
AT THE ENTRANCE**

## MATTER OF PRIDE SPECIFICATIONS

### Flooring

- 1 m x 1 m Vitrified flooring for Living + Kitchen + Dining
- All bedrooms 2' x 2'
- Matte finish tiles in terrace and toilet floor
- Designer tiles in toilet.

### Bathroom

- Premium quality CP and sanitary fittings
- Marble/Granite fascia for door opening
- Basin with Marble/Granite counter in master bedroom
- Provision for washing machine (inlet and outlet) in dry balcony
- Wall hung WC with flush valve
- Glass divider in master bedroom

### Electrical Fittings

- Concealed fire resistant high-quality copper wiring
- Ample light points with good-quality modular switches
- TV point in living room and master bedroom
- AC points in master bedrooms
- Provision for exhaust fan in bathroom and kitchen
- Provision for inverter
- Provision of 15 amp switch/socket for refrigerator, washing machine, microwave oven, geysers and water purifier at required locations
- Video door phone
- CCTV in periphery area at ground floor

### Internal Finishing

- Internal oil bond distemper
- External 100% acrylic paint (with leak-proof quality)

### Kitchen

- Ceramic/Dado tiles up to 2' above kitchen platform
- Provision for water purifiers
- Stainless steel sink

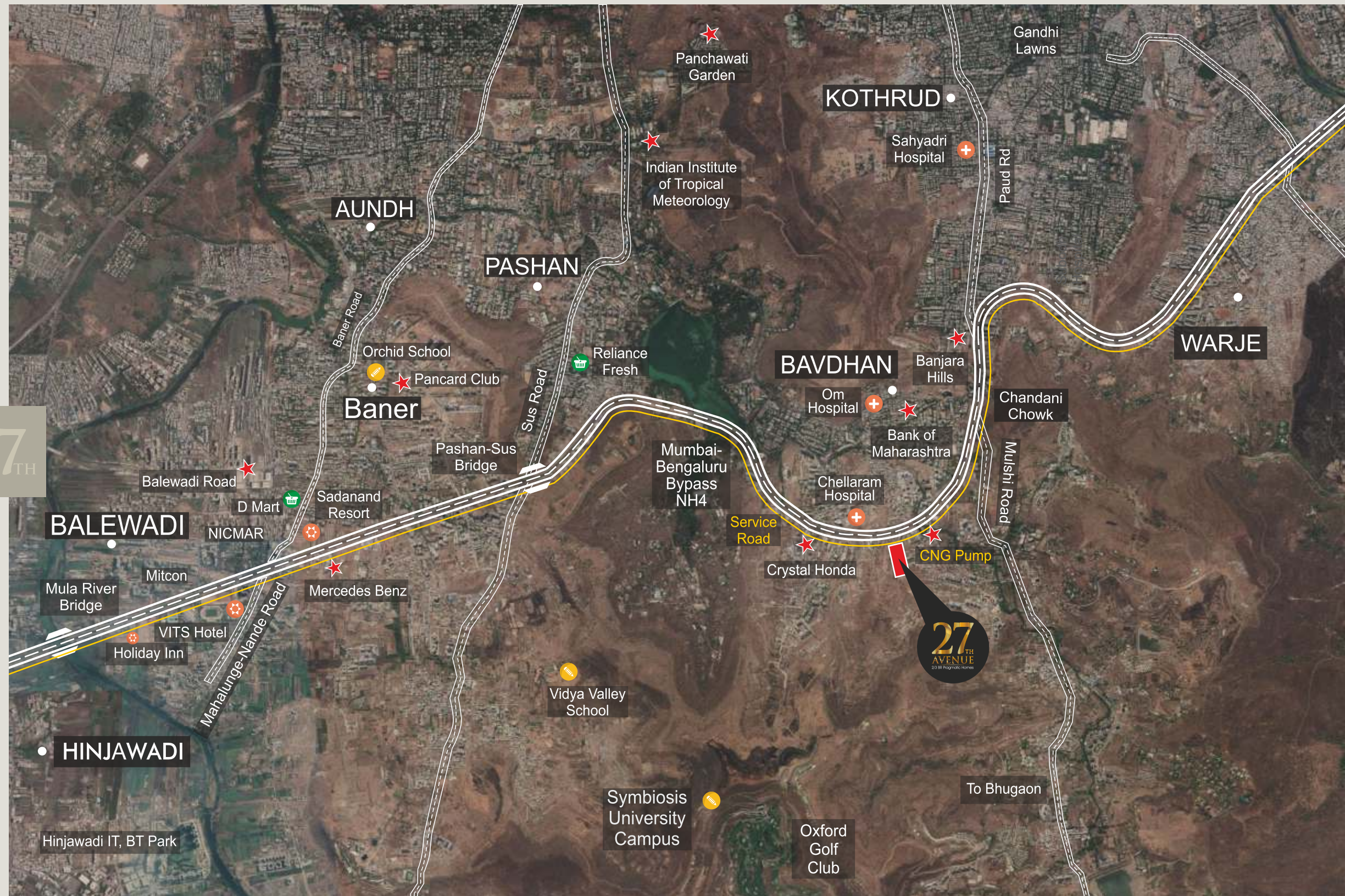
### Doors/Windows

- Laminated doors
- Powder-coated aluminium windows with mosquito mesh and safety grill
- Premium quality fixture and fittings
- Windows with sill level at 18"

### General

- Earthquake resistant RCC frame structure
- Elevators of reputed make
- Power backup for lift and common areas
- Solar water heating system
- Terrace with MS railings
- Rain water harvesting
- Firefighting system as per the norms
- STP

27<sup>TH</sup>



### OUR ELITE CREATIONS



**GARDEN CITY**  
WARJE - ADJOINING KOTHRUD



**ABODE**  
JAMBHUL (PUNE)



**Stanza**  
PUNAWALE



**TERENZIO**  
THE TERRACES  
Shirwal



**BLUE CARNATION**  
1BHK Luxurious Apartment & Shops



**SPECTRA**  
PUNE OFFICE



At Blue Venture, we connect your aspiration with our passion and dedicate ourselves to deliver quality construction to fit your lifestyle and values. We aspire to develop meaningful relationships and strive consistently to deliver high standards of customer satisfaction.

Our core strength is our highly qualified team experienced in engineering, administration, finance and marketing. High level of professionalism gives us a cutting-edge over our competitors and enables us to grow at a rapid pace in a highly competitive market.

Design Architect  
CUBIX ARCHITECTS ASSOCIATES

Liaisoning Architect  
SPIRO DESIGNS

Structural Consultant  
S.S. PATANE ASSOCIATES



**BLUE VENTURE**  
Building Excellence

**Site:** 27th Avenue, Survey No.: 27/1/A, 27/2 and 28/1/A, Bavdhan BK, Taluka-Mulshi, Pune - 411021.

**Corporate Office:** Blue Venture, 3rd Floor, CTS No.: 917, Final Plot No.: 299, Opposite Hotel Vaishali, F.C. Road, Pune - 411005.

27thavenue@blueventure.in | www.blueventure.in | www.27thavenue.in

**86 86 86 5227**

SCAN TO KNOW MORE



Disclaimer: This Brochure is purely conceptual and not a legal offering. Proposed buildings - A and D. Number of floors, flats or units may be revised in spite of amendment in development control rules. The developers reserve the rights to amend the layout, plan elevations, specifications & amenities.