

A project by



**CONCRETE
INFRA**
BEYOND TODAY

AVASA.
IS EVERYTHING
YOU WANT.

CONCRETE
AVASA

Divine dwelling

2&3 BHK GATED COMMUNITY LUXURY APARTMENTS @ NAGOLE



AVASA.
IS A HOME LIKE
A DREAM.

Dreams often take us far into a world that we start to live in. As much as we wish that our dreams should come true, they often end up being just dreams. Unless, we come across something that translates reality into a surprise. May we present to you something where one complements the other. So here's Avasa, it's a dream home.

CONCRETE
AVASA
Divine dwelling

CONCRETE
AVASA
Divine dwelling



AVASA.
IS A VASTNESS
OF WONDERS.

3D VIEWS



2 BHK
NORTH-FACING
FLAT NO. 1 TO 7



3 BHK
EAST-FACING
FLAT NO. 11

AVASA.
IS A COMMUNION
OF PLEASURE.

There is a good life you can look forward to at Avasa, where you'll be enveloped by the goodness of fresh air, the peace of privacy and the pleasure of splendid company. You sum up all these – and you'll discover that you belong to a home that rises to your expectations.



KEY PLAN



TYPICAL FLOOR PLAN BLOCK - A



KEY PLAN



CONCRETE AVASA

Divine dwelling

AVASA.
IS A LANDMARK
WITH CHOICES.

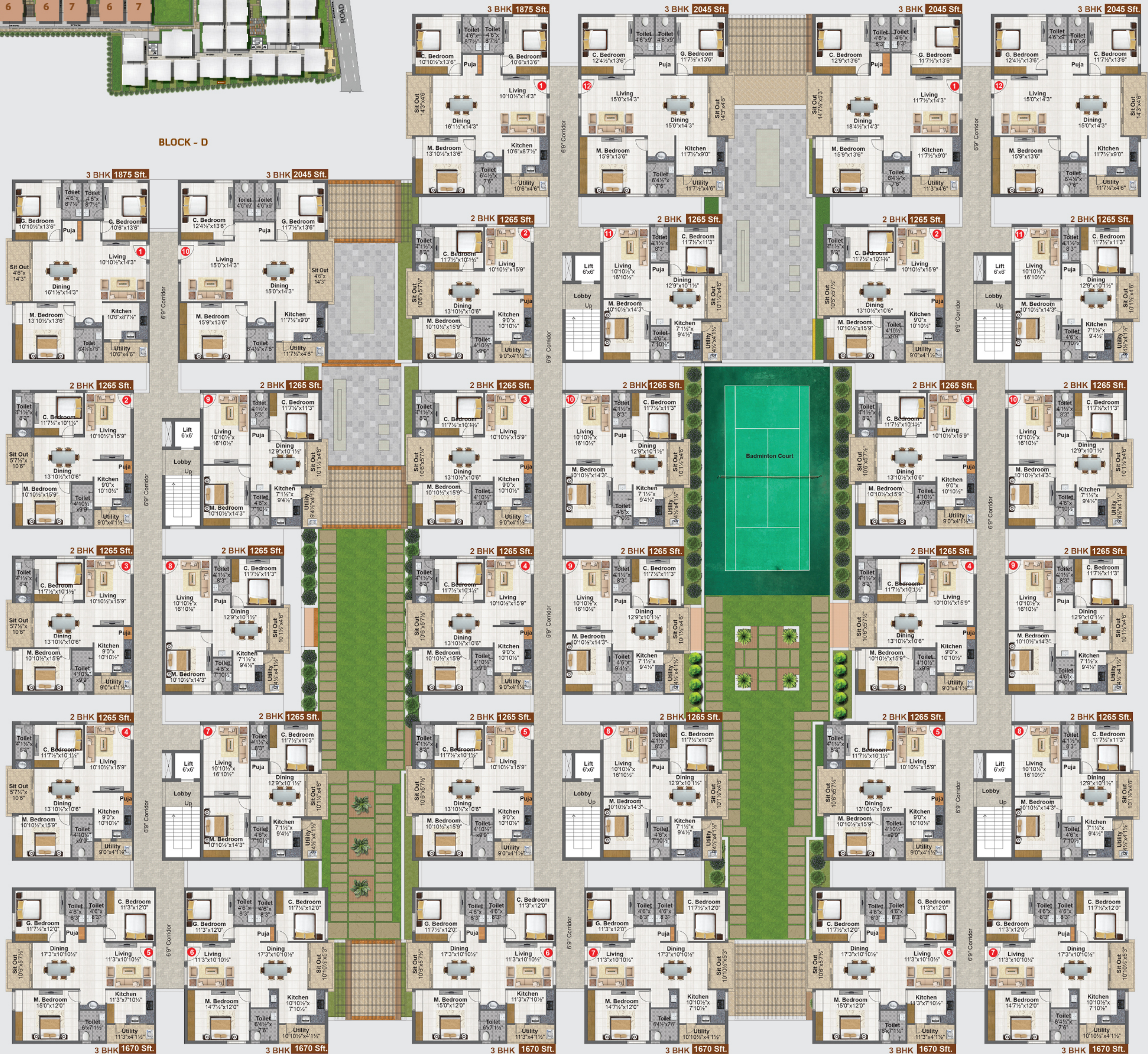
Cast over a land mass of 3.6 acres, Avasa is poised to fulfill your expectations of a community where you can live an active social life. With four residential blocks and 270 units, you can look forward to finding neighbours who share the same interests as yours, and friends and bonds who'll be around for a lifetime.



BLOCK - C

TYPICAL FLOOR PLAN

BLOCK - B

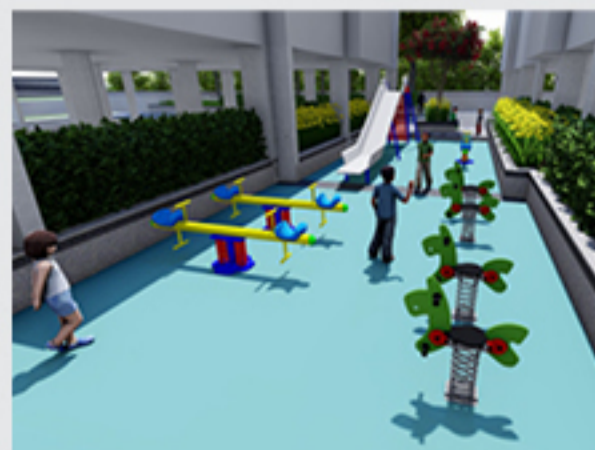




AMENITIES & FEATURES

- A/C party hall
- A/C gym
- Indoor games
- Table tennis
- Intercom facility
- Solar fencing
- Badminton court
- Power back-up
- Internet provision
- Swimming pool
- Landscaping
- Guest rooms
- Children's play area
- Jogging / walking track
- Spa and Salon provision
- Grand entry with security post
- Rain water harvesting pit
- BOARD GAMES
- Caroms, Chess

CONCRETE
AVASA
Divine dwelling



STRUCTURE

RCC-framed structure with 9" red bricks for exterior walls and 4½" red brick for internal walls. Internal and external double-coat cement plastering.



DOORS & WINDOWS

Main Door: Teak frame with designer veneer shutter with melamine polish with brass / SS fittings.

Internal Doors: Teak wood frames with designer veneer shutters with melamine polish with brass / SS fittings.

Windows: UPVC sliding shutters with mosquito mesh track provision and designed MS painted grills.



FLOORING

Somany or equivalent 2' X 2' vitrified tiles flooring for hall, dining, kitchen, bedrooms, balcony and utility. Anti-skid tiles in toilets.



STAIRCASE & CORRIDORS

Granite flooring for staircase and corridor, SS railing for staircase.



PAINTING

Internal : Two coats luppam / putty and two coats of Asian Tractor Emulsion paint over a base of primer in all rooms.
External : Asian Apex painting with Wall Care putty and texture.

Common Area : Asian Tractor Emulsion.



KITCHEN

Black granite platform with stainless steel sink. Provision for chimney, water purifier, microwave oven and washing machine in utility area.



TOILETS

All toilets consist of

- a) EWC wall-mounted with concealed flash tank (Hindware or equivalent make).
- b) Hot and cold wall mixer with shower, provision of geyser in all bathrooms.
- c) All fixtures are CP-coated of Hindware or equivalent make.
- d) Health faucet for all toilets.



COMMUNICATION

Internet provision in each flat (FTH). DTH cable connection in living, master and children's bedrooms.



GENERATOR BACKUP

Generator will be provided for all common services and seven points for 2 BHK, nine points for 3 BHK.



SECURITY

Intercom facility from flat to flat and flat to security and CCTV cameras.



LIFTS

Eight-passenger lifts with V3f of Kone or equivalent.



ELECTRICAL

Three-phase power supply for each flat. Concealed conduits with good quality copper wire – HOL or equivalent. Modular electrical switches of Legrand or equivalent. One Miniature Circuit Breaker (MCB) for each room. Points for geyser in toilets, washing machine in utility, refrigerator in kitchen or dining, microwave oven in kitchen, air-conditioner in all bedrooms, TV telephone point in living and master bedrooms. Internet point provision in children's bedroom.

SPECIFICATIONS



TILE CLADDING & DADOING

Toilets: Somany or equivalent designer malt ceramic tile dado up to 7'.

Kitchen: Glazed ceramic tile dado up to 2' height above kitchen platform.

Utility / Wash: Glazed ceramic tiles dado up to 3' height.



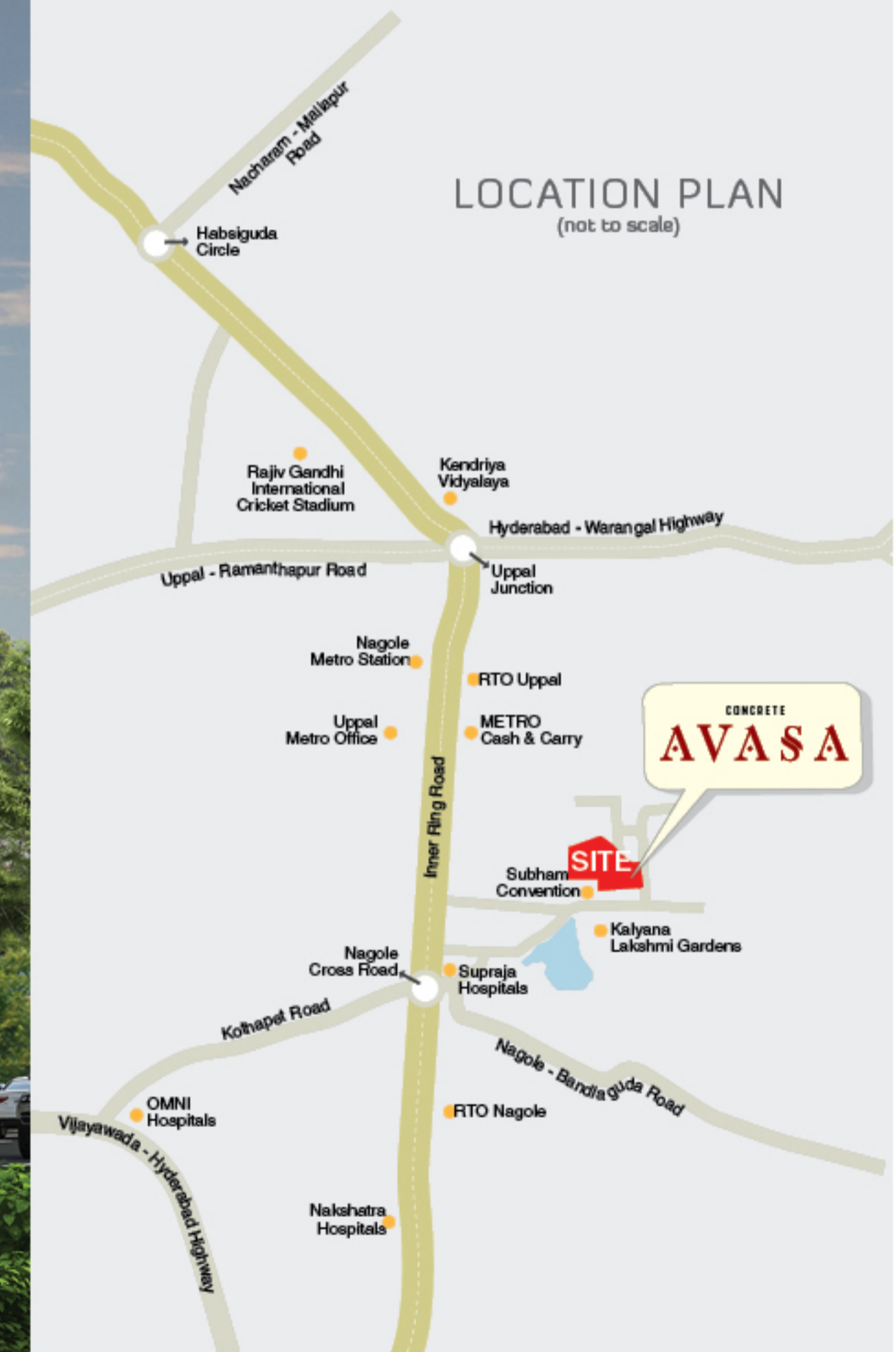
NOTE

- a) Shelves, chajjas lofts, arches or any kind of modifications / alteration are not allowed.
- b) Flat will be handed over for woodwork / interiors after receiving 100% payment only, subject to payment of facilitating cost as may be decided by builder.
- c) GST, Registration Charges applicable as per government norms.



AVASA. IS A PLACE TO BELONG FOR LIFE.

Avasa's location of Nagole is one factor that will surely be on your side, with regards deciding on making a home here, yours. It's amidst a setting that is neither in the hustle and bustle of a busy city life, nor is it far and away from the city itself. Here is a place where you can look forward to fulfilling your dream of settling down in a home that's quite the right one for you.





CONCRETE
I N F R A
BEYOND TODAY

Concrete Infra Projects India LLP

| Office Address: |

Flat No: 101, Good Earth Apartment
Jayabheri Pine Valley, Gachibowli
Hyderabad - 500 032, TS, India

mob: 99590 20232, 95503 66964
e-mail: concreteavasa@gmail.com
web: www.concreteinfra.in

TS RERA Registration No. P02200001445