



GUNDECHA
DEVELOPING MILESTONES SINCE 1966

Live
between

Phase I



Financed by  **AXIS FINANCE**

Artistic Impression. Image for representation only.

GUNDECHA GREENS

Thakur Village, Kandivali (E)

between

peacefulness

and
excitement

between
the forest and the highway.

between
work and play.

between
the peace of home and
the excitement of the city.

here lies

homes that put you delightfully
between two sides of life.



GUNDECHA GREENS

Thakur Village, Kandivali (E)



Gundecha Greens is ideally located between two wonderful sides of life. On one hand, you are surrounded by the green expanse of Sanjay Gandhi National Park.

On the other hand, the Western Express Highway is a mere 5 minutes away connecting you to life in the city.

Crafted for you by Gundecha

Gundecha Builders are property developers and builders based in Mumbai, with more than 100 residential, commercial and industrial projects. They have been in existence for almost 60 years, steadily building Mumbai City's skyline and lifestyle over the years, and have over 18,000 satisfied customers. Many of their structures have become proud city landmarks as well. Customer delight is the Gundecha credo. The company aims to satisfy its customers by exceeding their

expectations, and employing a corporate and transparent approach that gives customers immense faith and confidence in the company. The company has leveraged the services of internationally renowned architects and the latest construction techniques to ensure superlative standards of quality. This, along with timely deliveries, has gained the group consistent customer confidence.

Architects: M/s. T. A. C. Pvt. Ltd. | Consulting Architects: Hafeez Contractor



GUNDECHA

DEVELOPING MILESTONES SINCE 1966

Real Estate | Hospitality | Education

Site Address:

Gundecha Greens, Kashtamandup Developers Pvt. Ltd., Thakur Village, Kandivali (East), Mumbai - 400101

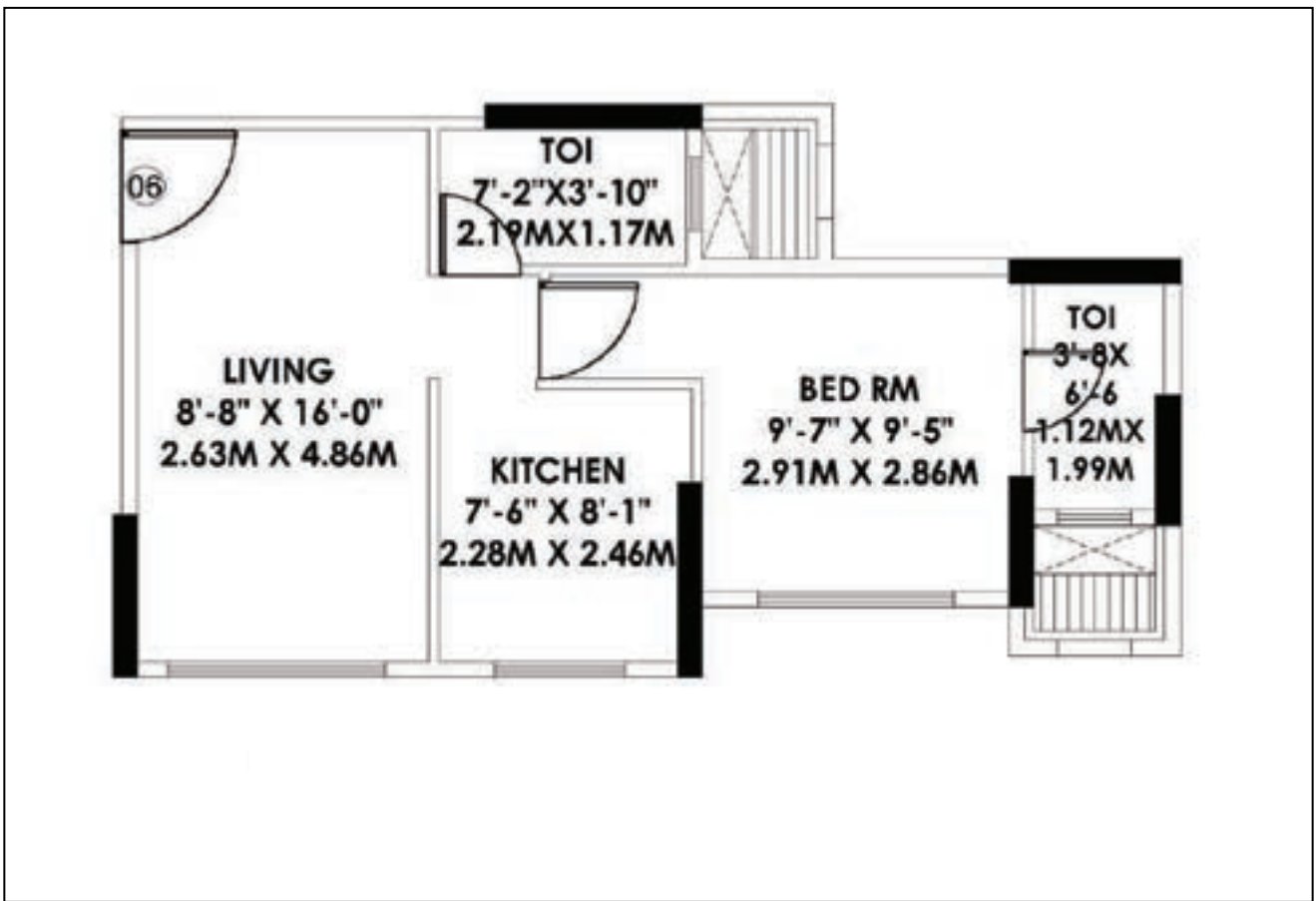
Corporate Office: 801, Hub Town Solaris, N.S. Phadke Marg, Off. Teli Galli, Near Andheri Flyover, Andheri East, Mumbai-400069

T: 6731 9500, 70399 03308, 7045626661 | sales@gundechabuilders.com | www.gundechabuilders.com

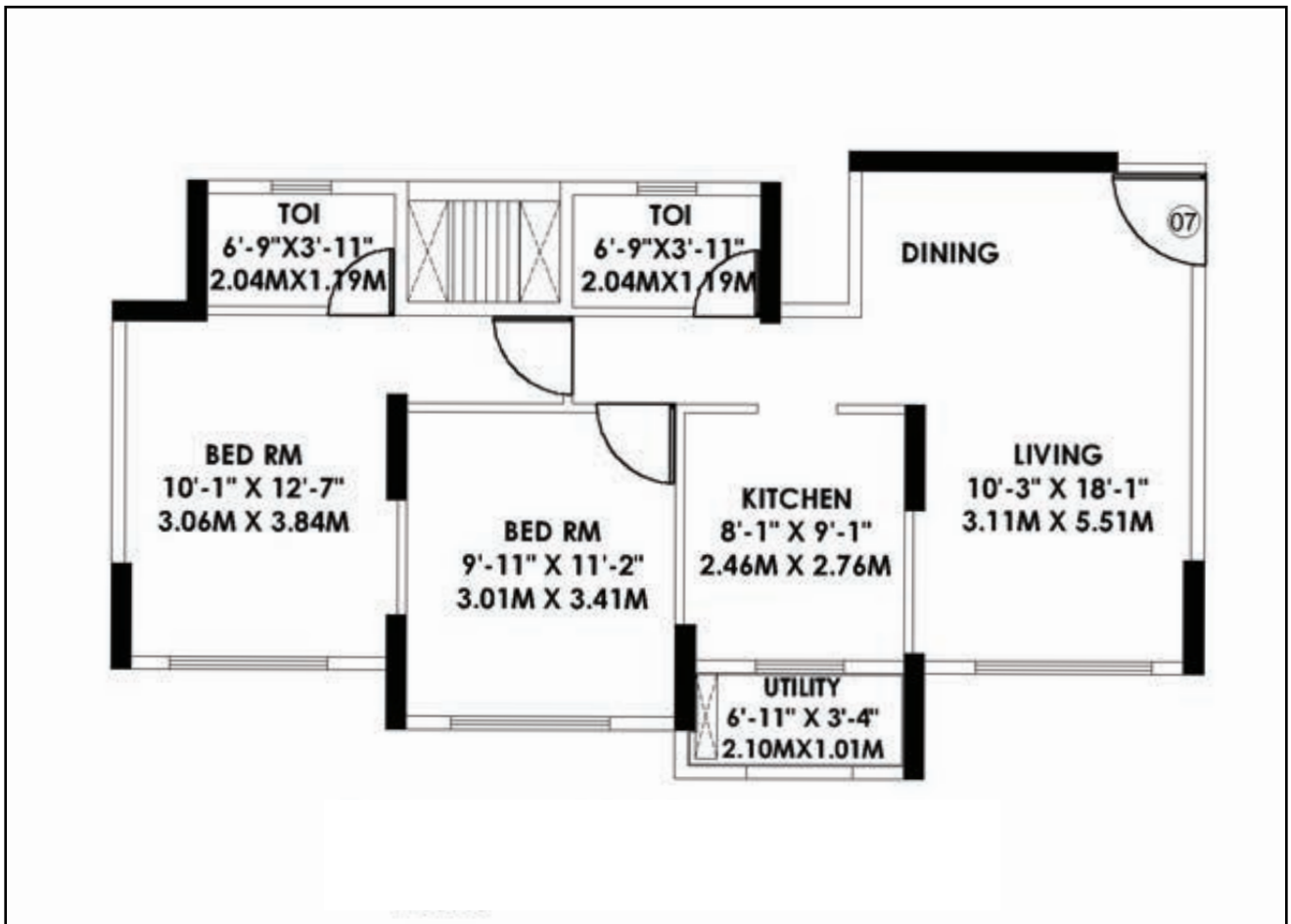


RERA Website: <https://maharera.mahaonline.gov.in>
RERA Reg. No. P51800001863

C WING - 1 BHK - 393 Sq.ft.



2 BHK - C WING - 657 SQ. FT.



2½ BHK - B WING - 808 SQ. FT.

