

# MetrOne

By Kabra

'A' WING

'B' WING



VERSOVA, ANDHERI (WEST)

*A new journey has begun*  
Presenting a destination that will redefine the world



Home-

A PLACE WHERE YOU  
CAN SHOP AND DINE.



Café -

A PLACE WHERE YOU  
GET FITNESS ADVICE.



Boutique -

A PLACE THAT SERVES  
DELECTABLE MEALS



Office -

THE DOORWAY  
TO YOUR HOME.

Residential, Commercial and Retail Spaces





BUILDING FUTURE  
**KABRA**  
GROUP

## TRANSCEND THE WAY YOU LIVE

Offering Residential units, Commercial spaces and  
retail outlets at same place; this destination  
is all set to redefine the world.

Come, learn more about this new landmark in the  
flamboyant Versova

MetrOne

By  
Kabra

2, 2.5, 3 and 4 BHK Apartments | Limited Sea View Apartments



Fitness Centre



Living/Dining Room



Bedroom



Video Phone



Kitchen



CCTV Surveillance



Steam Room



## Where life's finest world class amenities comes to you.

More than just a living space, Kabra Group's planning offers you a complete rejuvenation package in an exotic environment, radiating pure bliss. A sheer dweller's delight, it comes loaded with ultra-modern luxurious facilities that adds charm to your lifestyle with Sea View Flats, making your life an experience to relish day after day. Live your joy and feel the infinite possibilities available to you in each day of your life at MetrOne consisting of Ground +1 Commercial, multi level Podiums (parking) + Multi storied Residential premises. Discover ore ways to find the real you in the confines of more than your home, office & hops.

### Common Amenities

- Aqua marine Swimming pool
- Well planned Podium Garden with decorative illumination.
- Club House with Steam Room.
- Jogging Track
- Senior Citizen corner with Yoga Room & Library.
- Community Hall for Society get together & festivities.
- High Speed Elevators with 1 Service lift in each wing.
- Basement / Stilt /Multi level Podium Car Parking.

### Safety & Security

- CCTV Camera on each Floor, Elevator, Entry/Exit points & surrounding Building Premises.
- High speed Schindler Elevators or equivalent make with power backup.
- Video phone.



Swimming Pool

# A - Wing 2 BHK 960 Sq. ft.

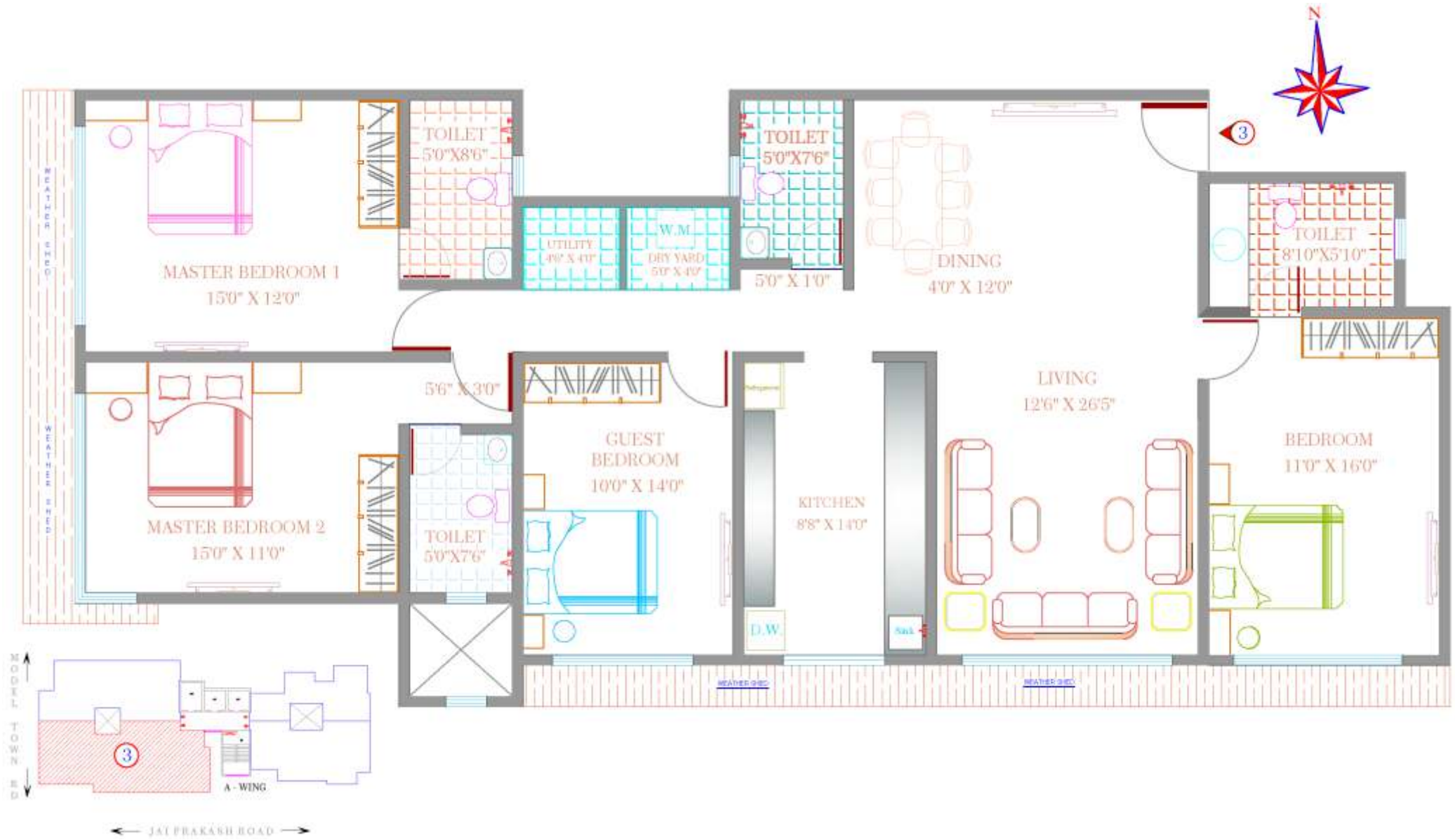


# A - Wing 3 BHK 1450 Sq. ft.



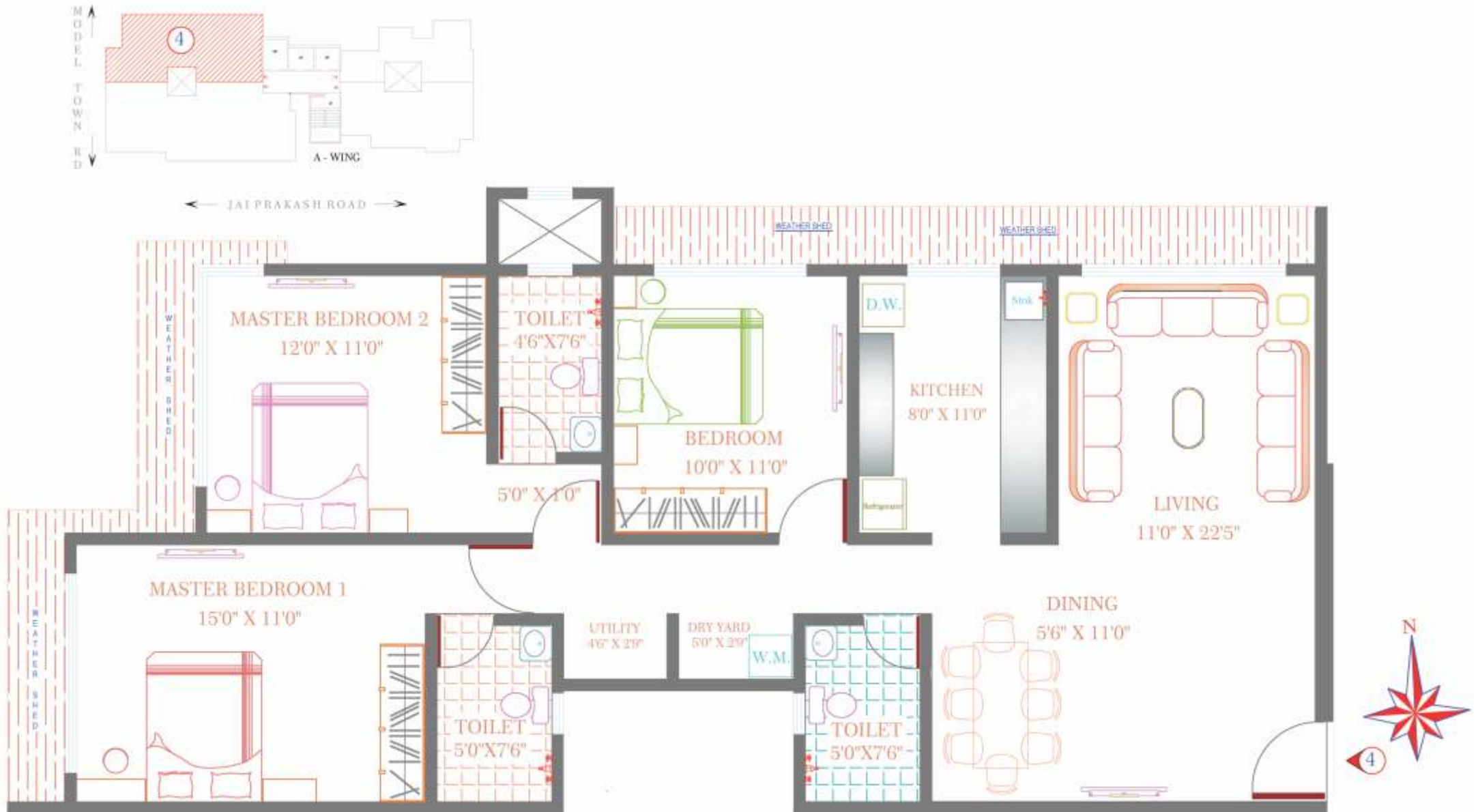


# A - Wing 4 BHK 2410 Sq. ft.

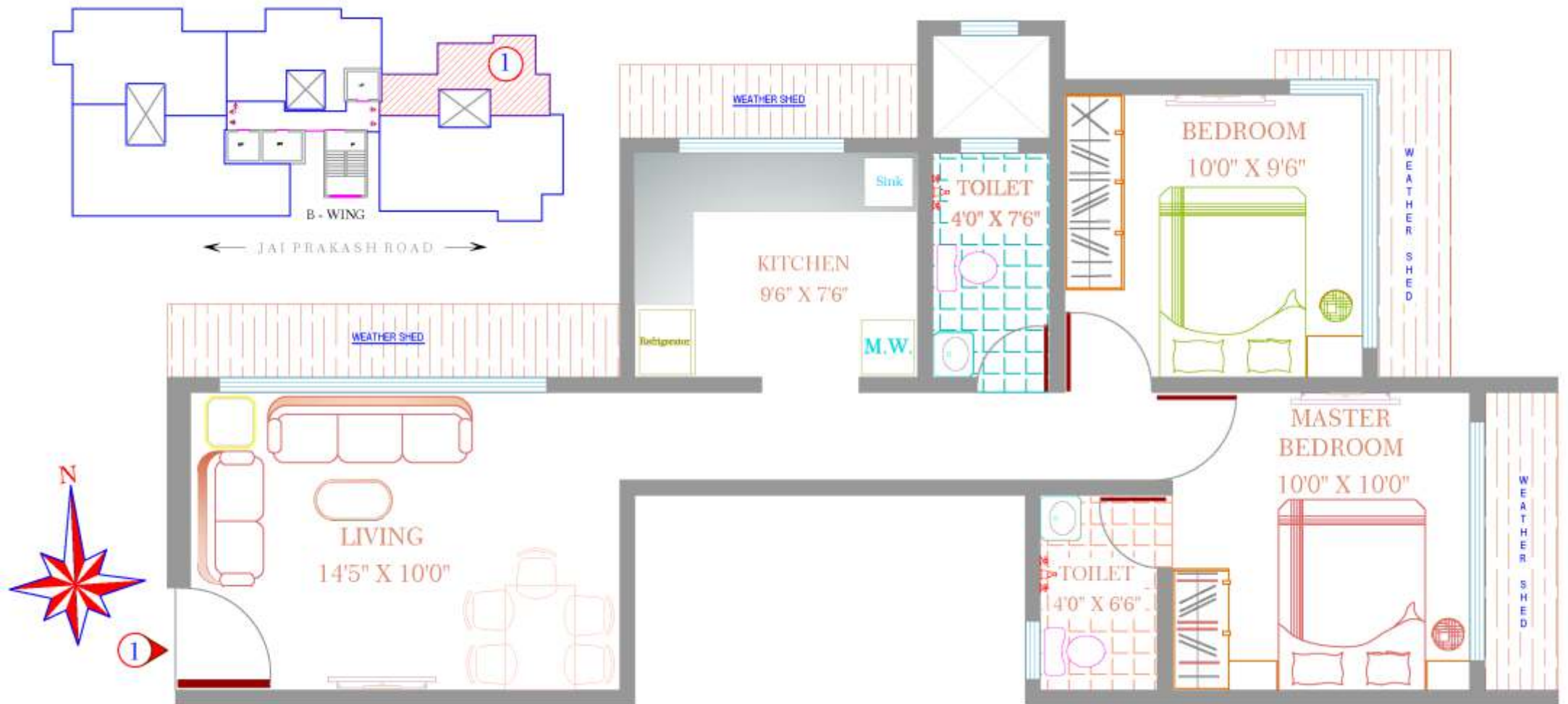




# A - Wing 3 BHK 1685 Sq. ft.

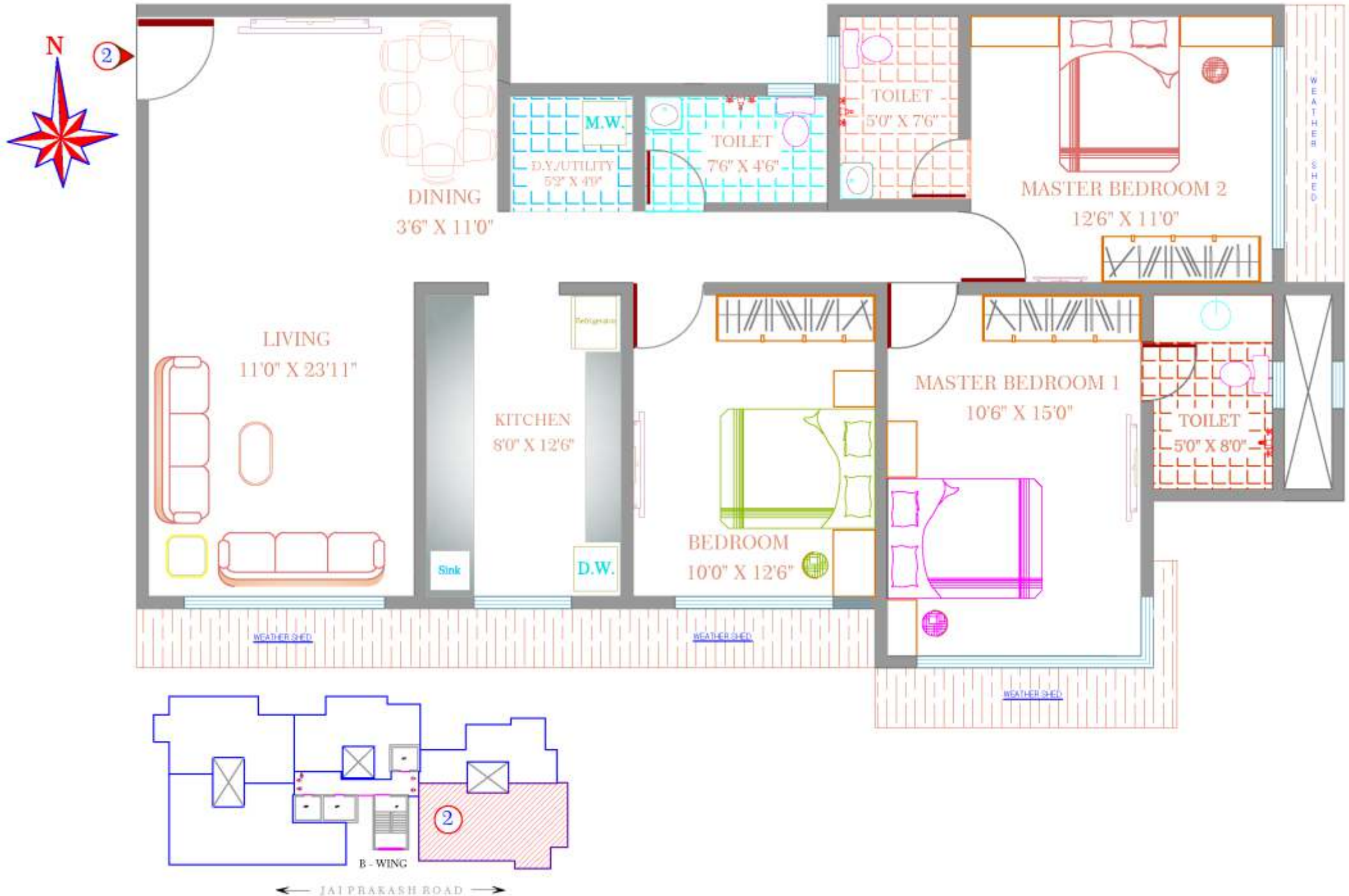


# B - Wing 2 BHK 875 Sq. ft.

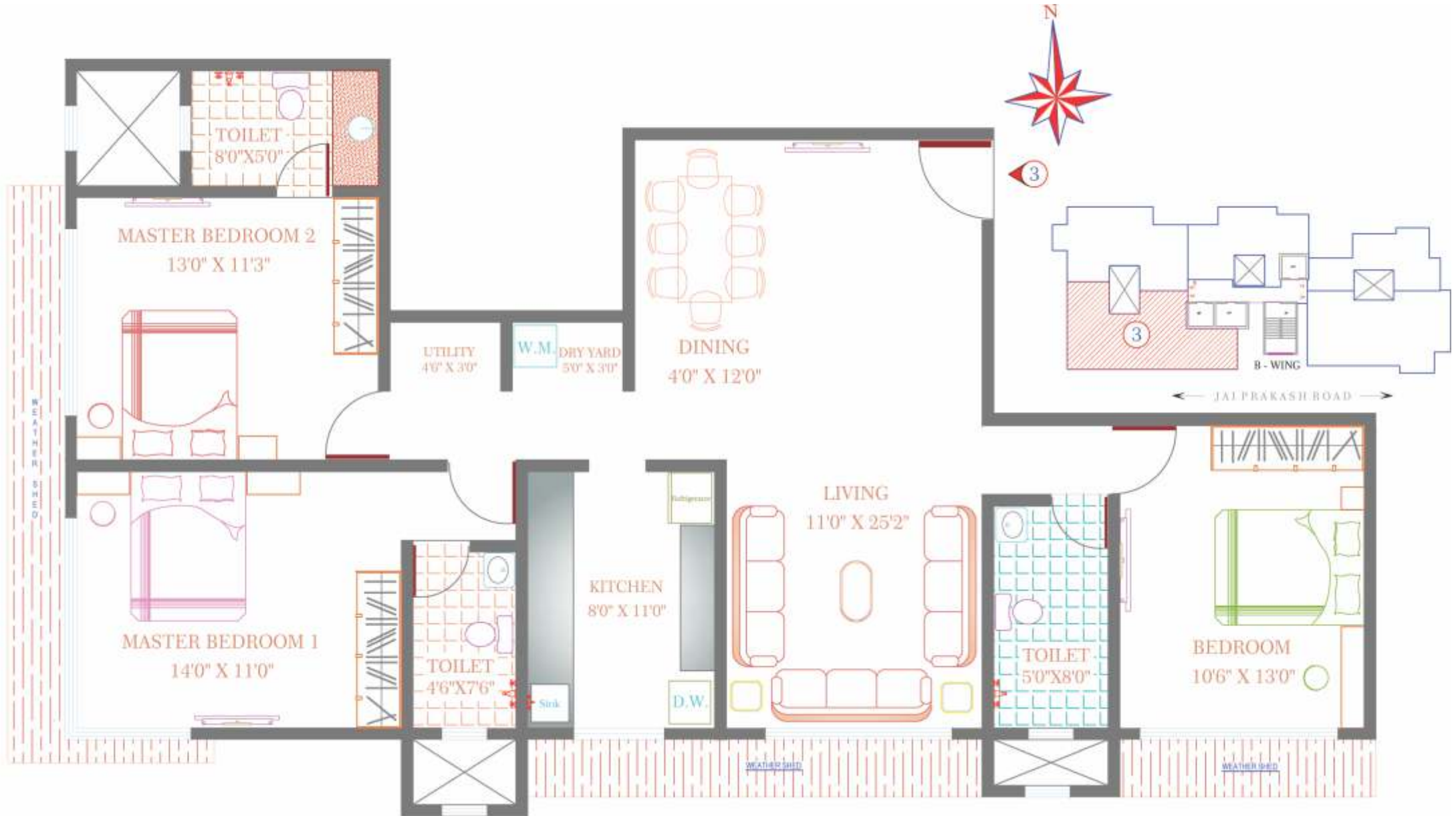




# B - Wing 3 BHK 1685 Sq. ft.

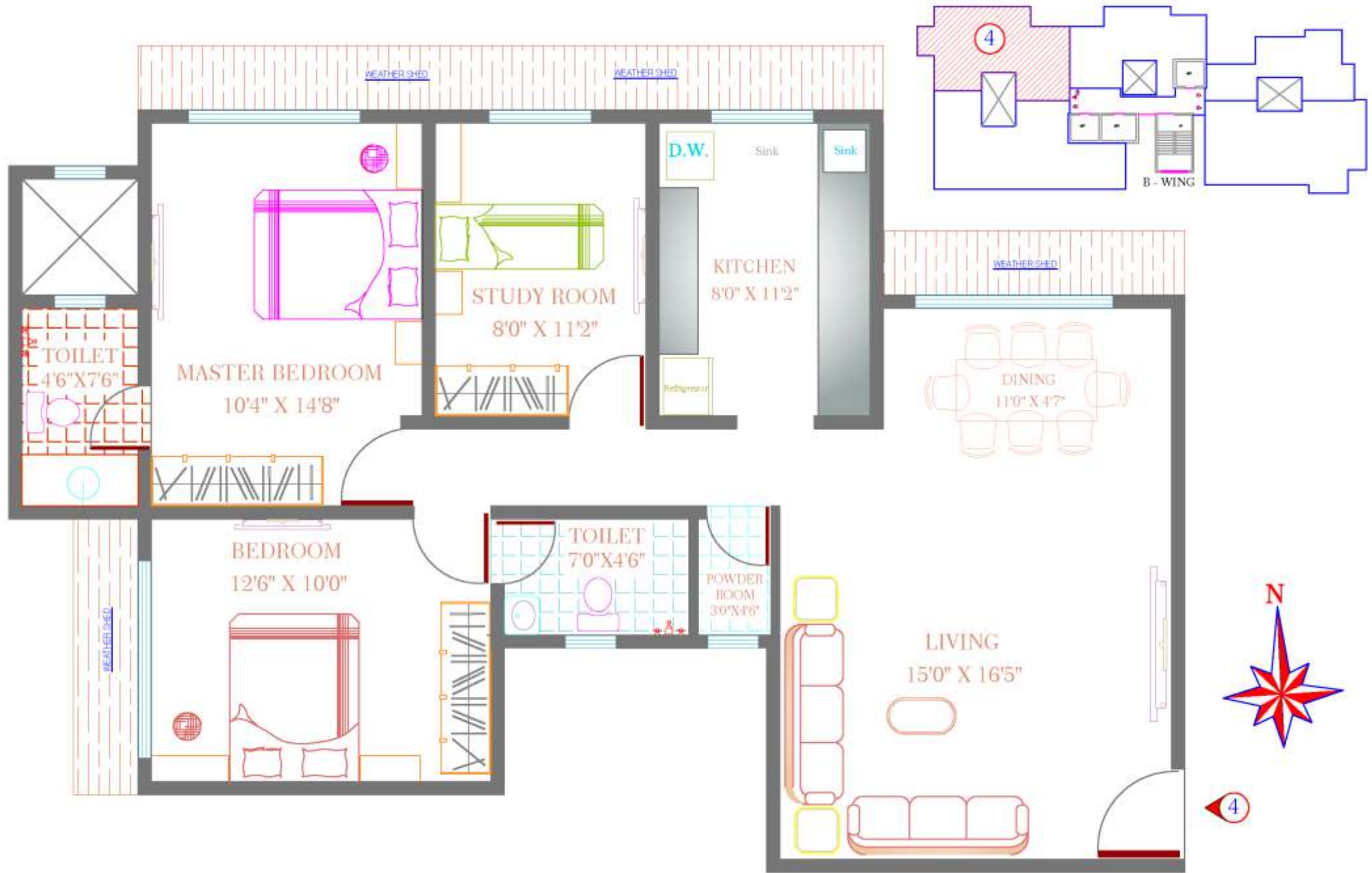


# B - Wing 3 BHK 1775 Sq. ft.

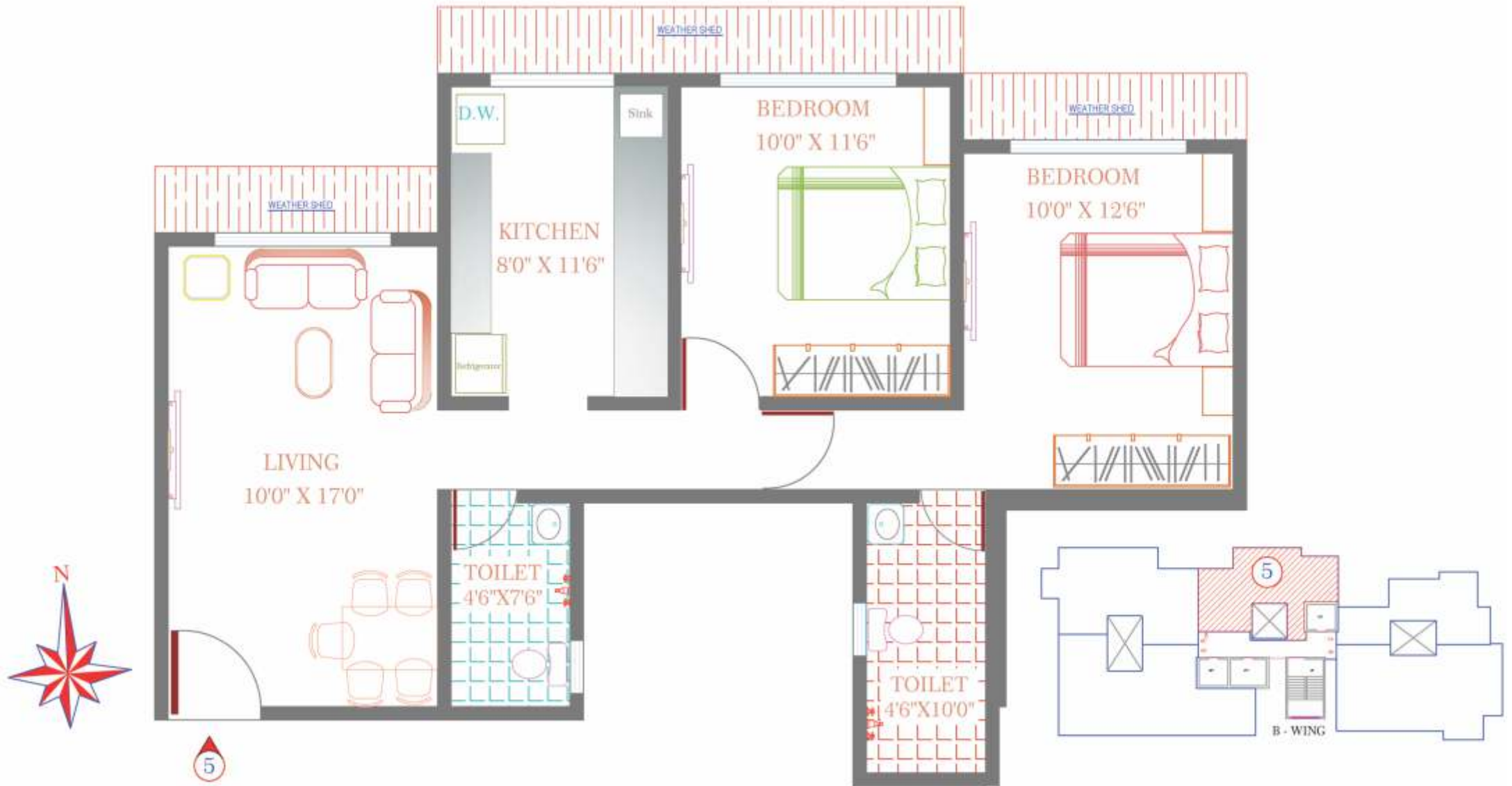




# B - Wing 2.5 BHK 1450 Sq. ft.



# B - Wing 2 BHK 1065 Sq. ft.





## Few of Kabra's Landmark projects -



Ajanta - Santacruz (W)



New Vinay - Kalina, Santacruz (E)



Kabra Paradise - Andheri (W)



Juhu Prarthana - JVPD Scheme



Jeevan Saathi - Juhu Lane



Aurum - Goregaon (W)



Argentum - Goregaon (W)



Christina - Goregaon (W)



Vihang - Goregaon (W)



Rageshree - Borivali (W)



Natraj - Borivali (W)



Alya-Garnet - Thane (W)

## The Group Bringing leisure to life

Our journey as a Real Estate Developer began in the year 1980, when we laid the foundation of the KABRA Group of Companies. Our projects Brahmand, the first ever township in Thane city is a prominent landmark. In this short span we have completed Residential / Commercial Township projects in Thane & Mumbai of approx 80 lakhs sq. ft.

Today, KABRA has changed the living space of many families for the better, through redevelopment in the Mumbai suburbs of Private as well as MHADA Societies building redevelopment. KABRA have redeveloped numerous projects, providing people with better amenities in the agreed time frame committed to match the fast pace of life as can be seen from our projects construction area of approx 25 lakhs Sq. ft. at Bandra, Santacruz, Vile Parle, JVPD, Andheri, Goregaon, Malad, Borivali & Dahisar.

KABRA Group are powered by Quality management systems, certified under QSI ISO- 9001:2008. KABRA Group is moving ahead towards the vision of building world class homes, shops & offices, creating contemporary lifestyles.

# MetrOne

Site Address:

At Versova Metro Station, Between 4 & 7 Bungalow, Jayprakash Road,  
Andheri (W), Mumbai - 400 058.



*For Enquiry Contact*

Registered Office:

Jash Chambers, 2nd Floor, Sir P.M. Road, Fort Mumbai - 400 001.

Tel. : 2266 2363 / 2266 0143 Email : fort@kabragroup.net

Goregaon Off.:

Mangalya, Office No. 2, 1st Floor, Vidya Niketan Marg, Off M.G. Road,  
Goregaon (W), Mumbai - 400 062

Tel.: 022 - 2878 3818, 2878 4818. Email: goregaon@kabragroup.net

Andheri Off.:

1001, 10th floor, Kamla Hub, N.S. road no. 1, J.V.P.D Scheme, next to Costa Cofee  
Andheri (W) Mumbai 400 049

Tel.: 022 - 2621 0202 / 03. Email: sales.andheri@kabragroup.net

[www.kabragroup.net](http://www.kabragroup.net)