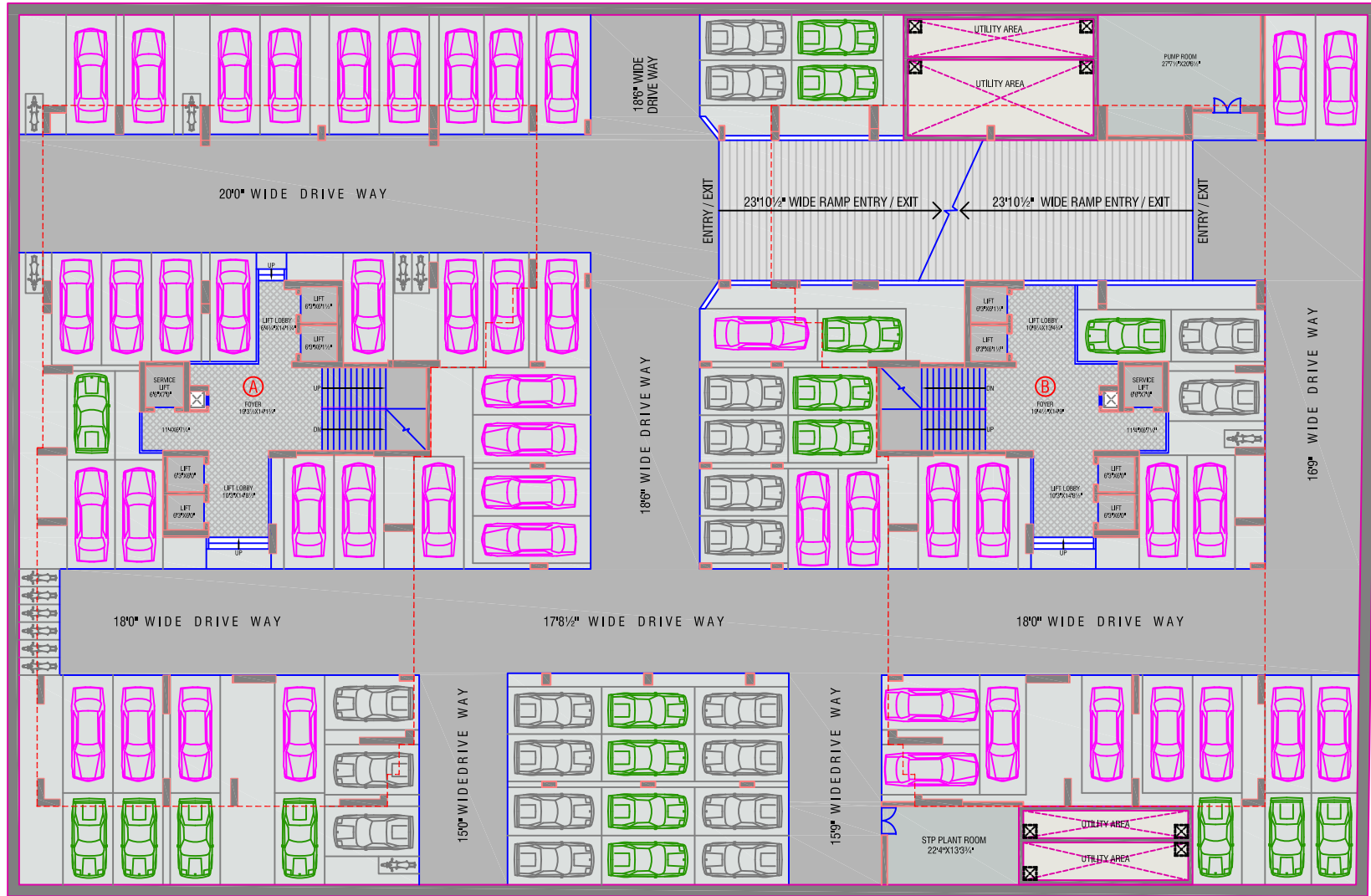


**SHEETAL INFRASTRUCTURE PRIVATE LIMITED**  
**PROJECT NAME :- GHARANA**

# PROPOSED PLAN

AT AMBLI BOPAL ROAD,  
AHMEDABAD

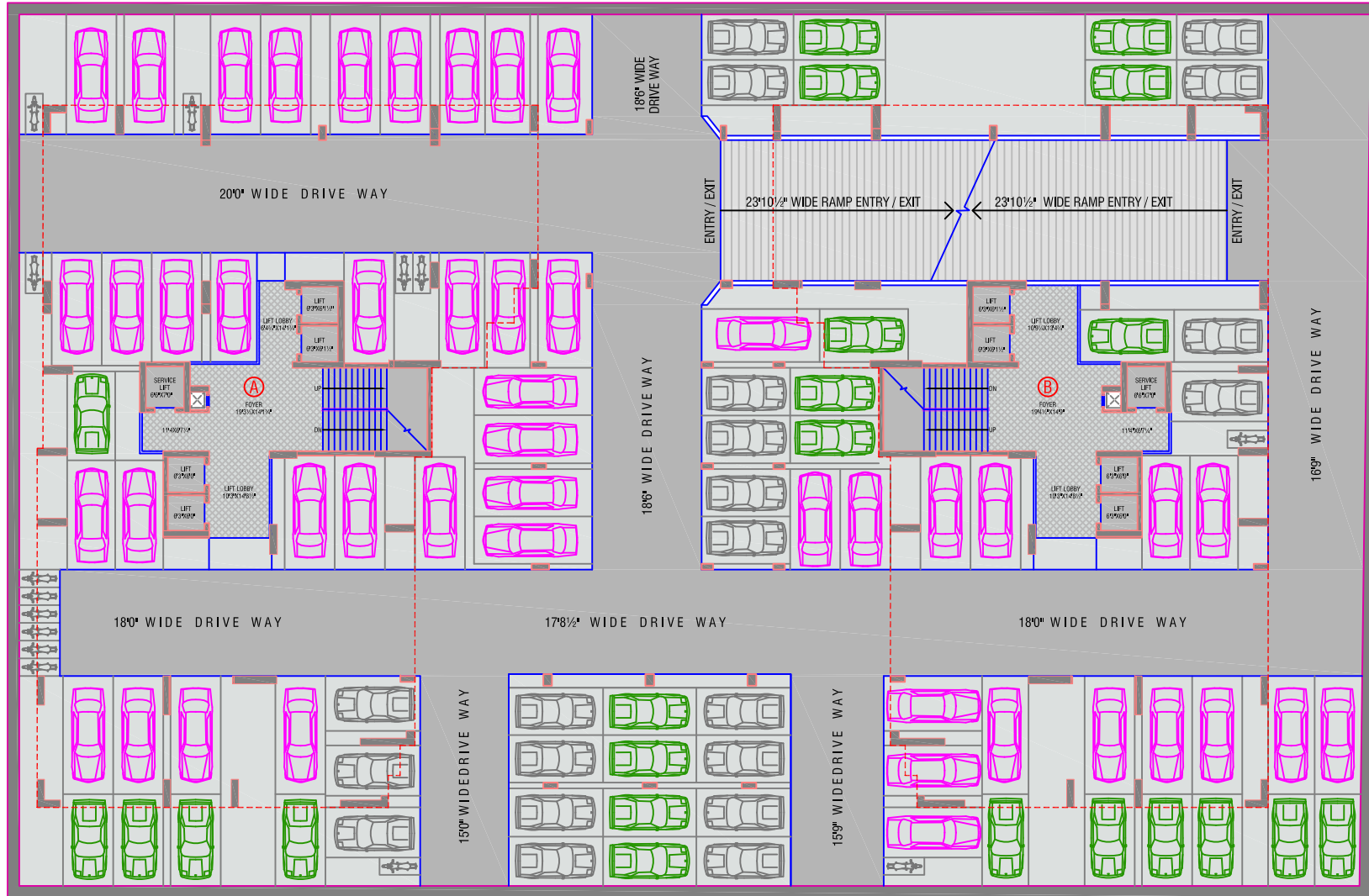
12.0 M WIDE ROAD



18.0 M WIDE ROAD



12.0 M WIDE ROAD



18.0 M WIDE ROAD

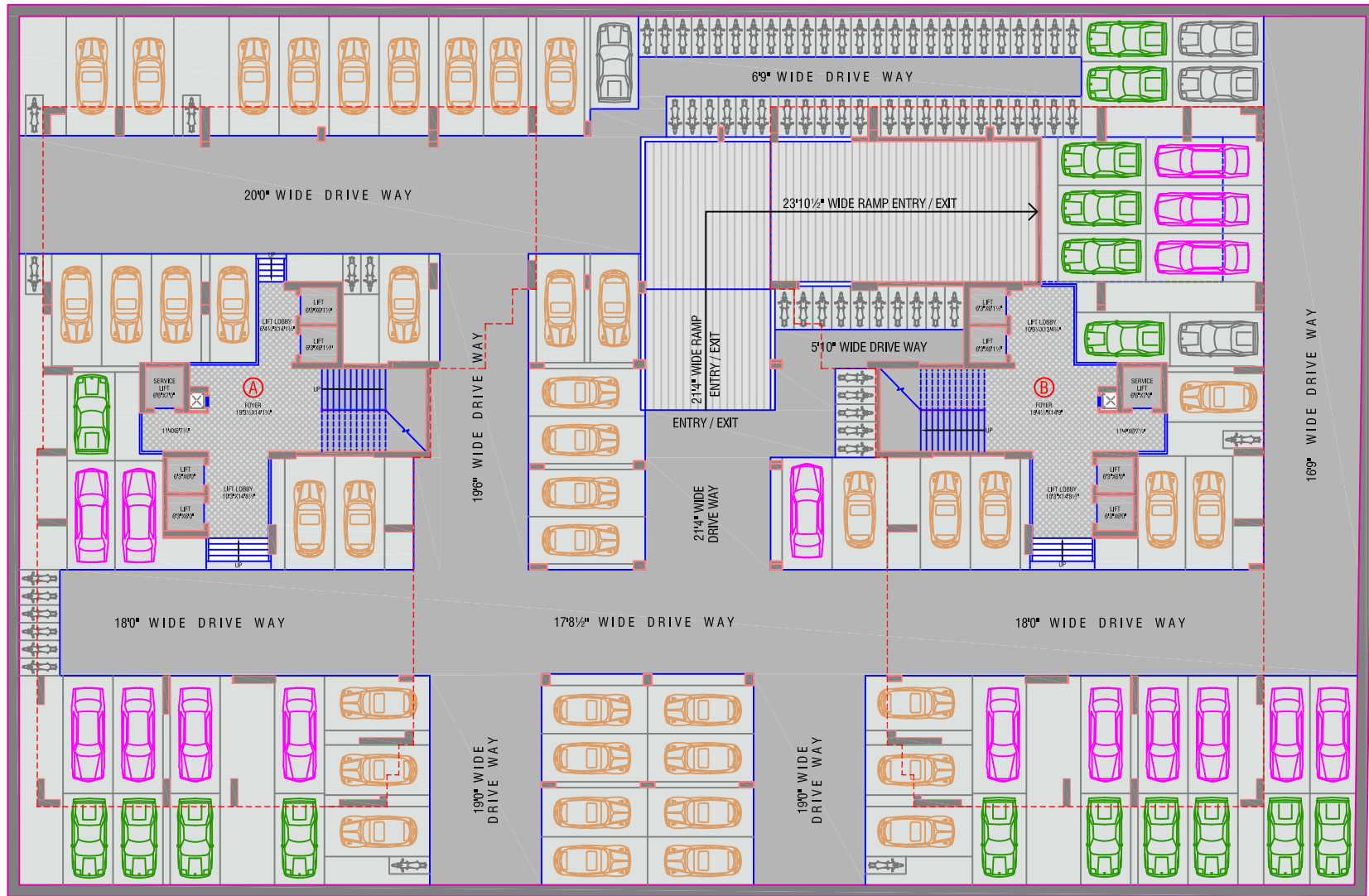
THE NORTH WEST  
AT AMBLI BOPAL ROAD, AHMEDABAD

2ND BASEMENT PLAN

ADS  
architect pvt. ltd.



12.0 M WIDE ROAD



18.0 M WIDE ROAD

12.0 M WIDE ROAD

EXIT

23'0" WIDE DRIVE WAY

23'0" WIDE DRIVE WAY

15'11 1/2" WIDE DRIVE WAY

20'0" WIDE DRIVE WAY

23'10 1/2" WIDE RAMP ENTRY / EXIT

ENTRY / EXIT

23'0" WIDE DRIVE WAY



14'3 1/2" WIDE DRIVE WAY

20'0" WIDE DRIVE WAY

LAWN

20'0" WIDE DRIVE WAY

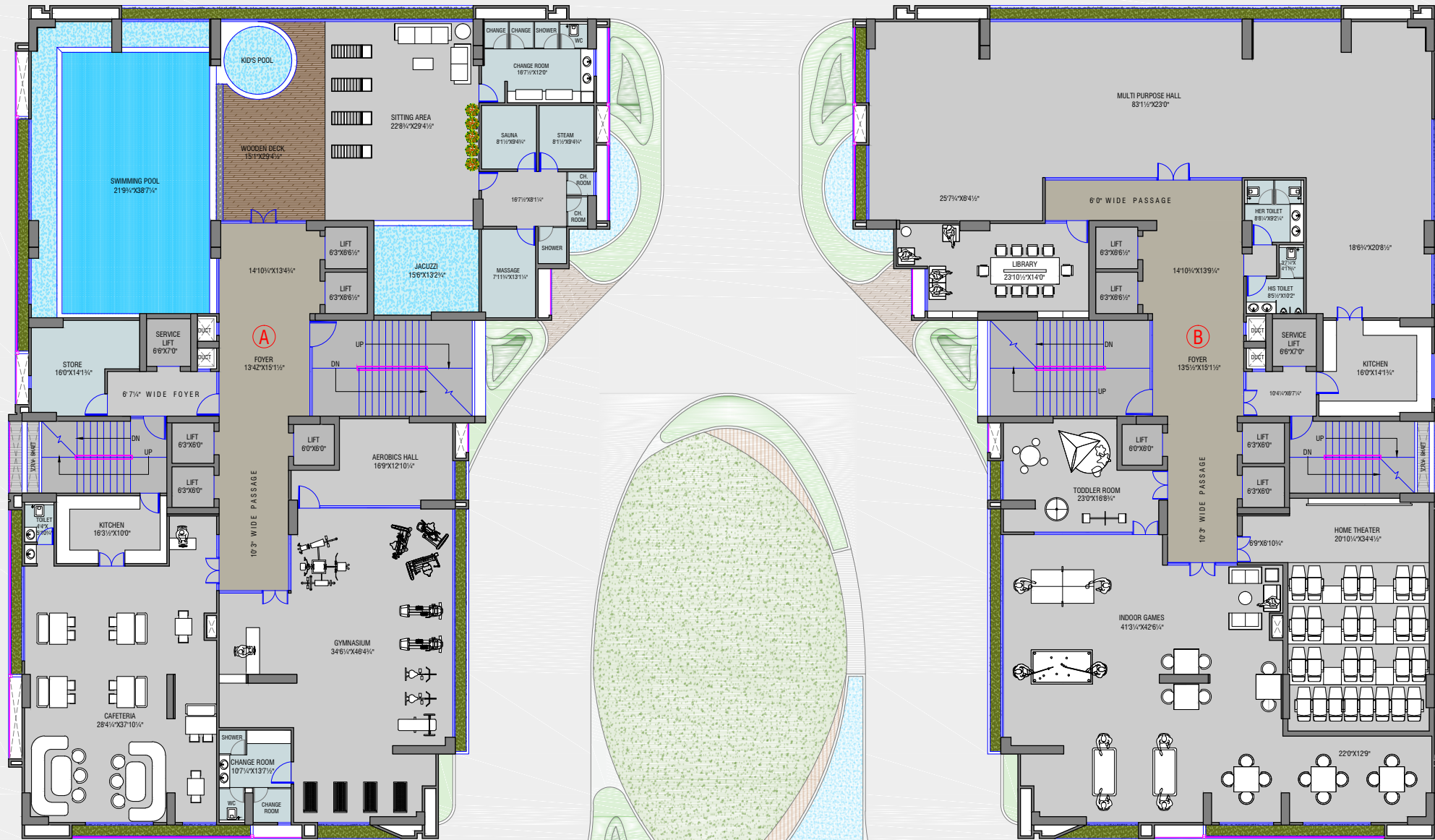
WATER BODY

22'10 1/2" WIDE DRIVE WAY

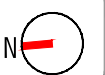
18.0 M WIDE ROAD

ENTRY

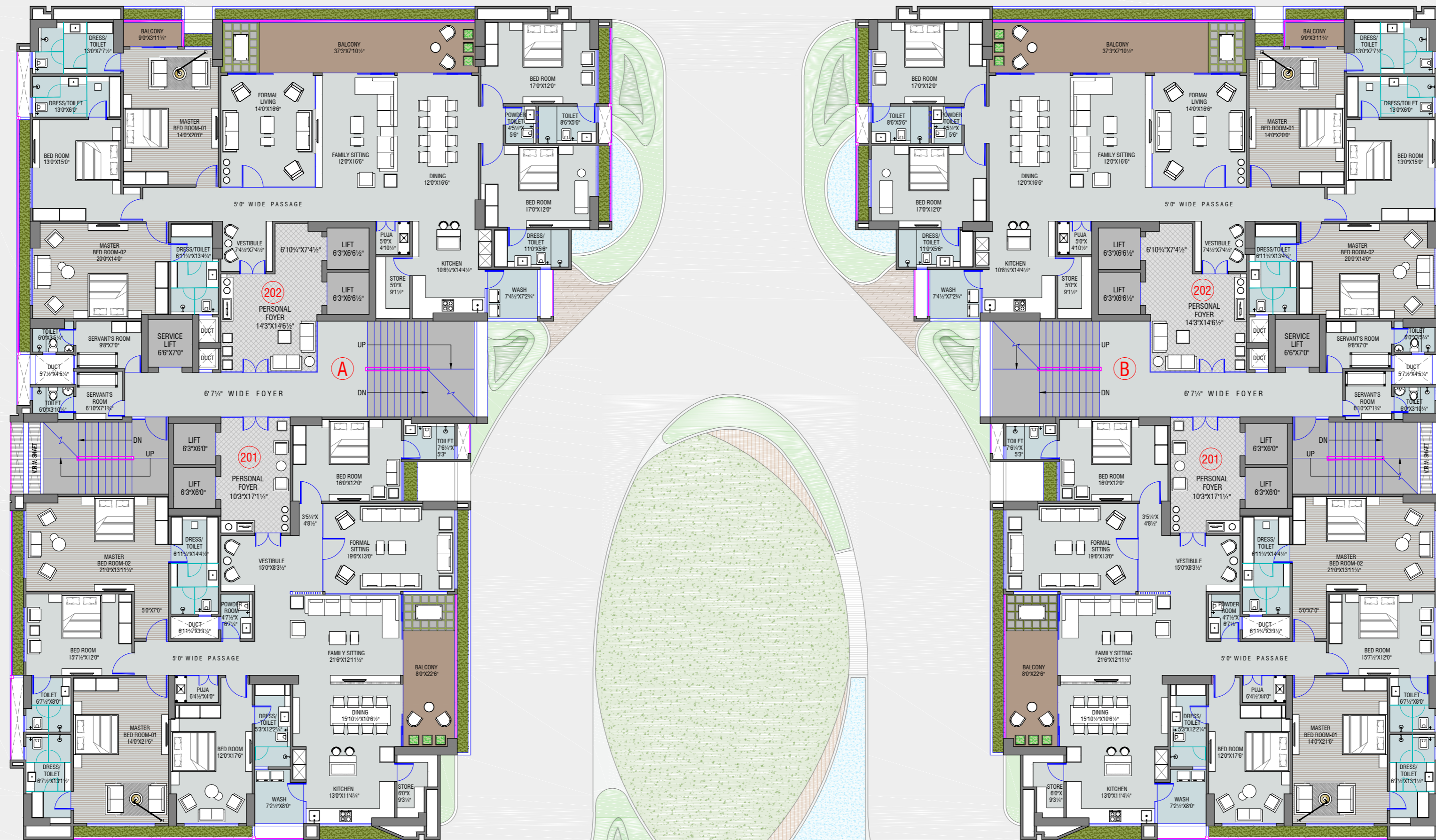
12.0 M WIDE ROAD



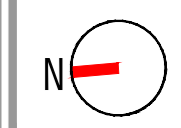
18.0 M WIDE ROAD



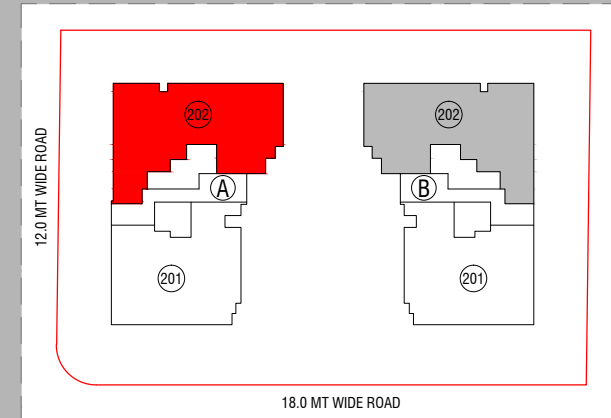
12.0 M WIDE ROAD



18.0 M WIDE ROAD



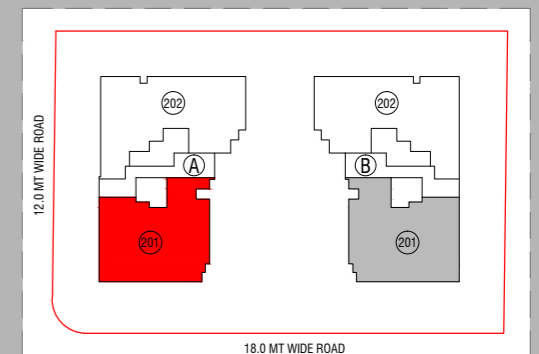
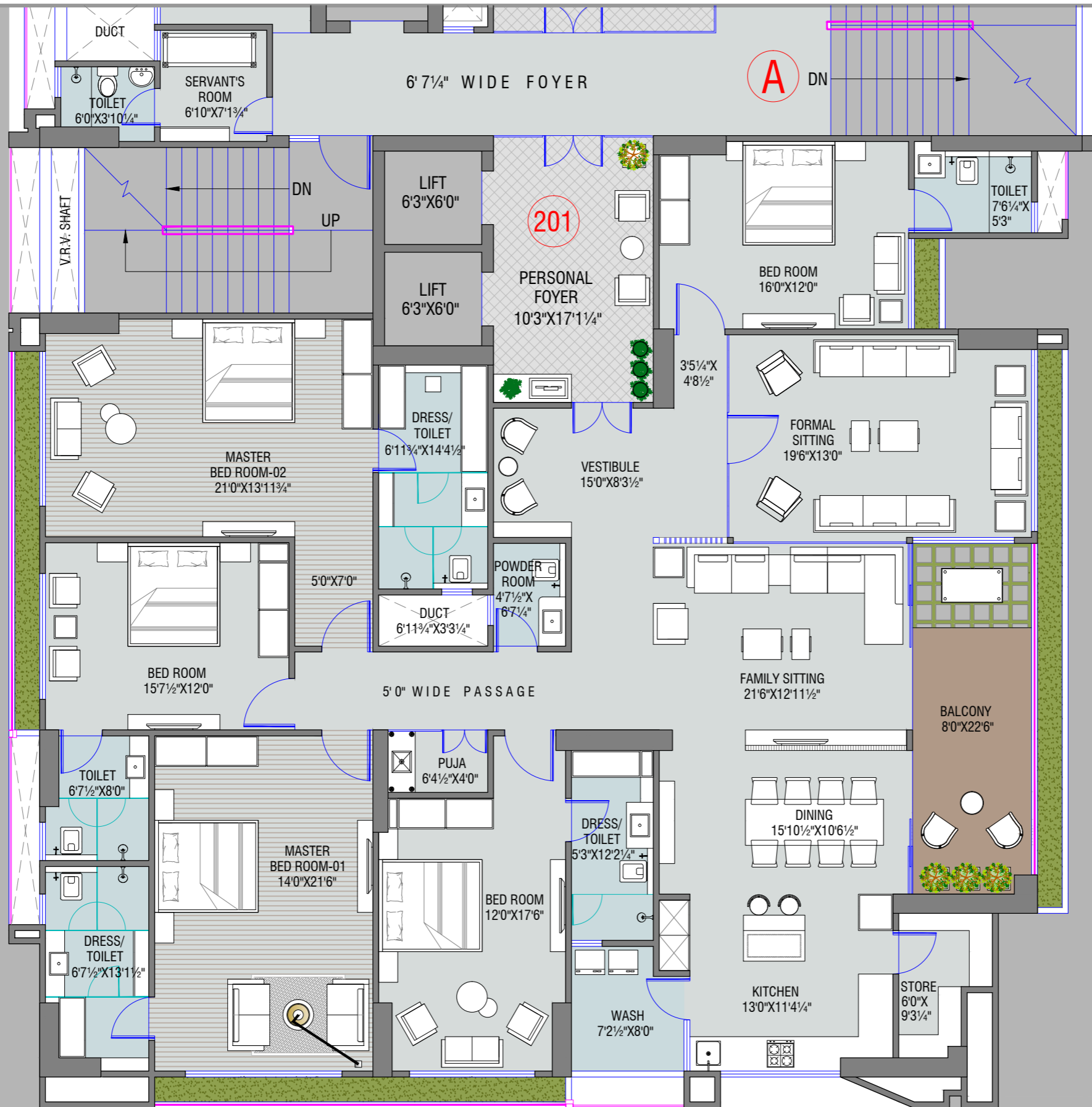




**PROPOSED PLAN**  
AT AMBLI BOPAL ROAD, AHMEDABAD

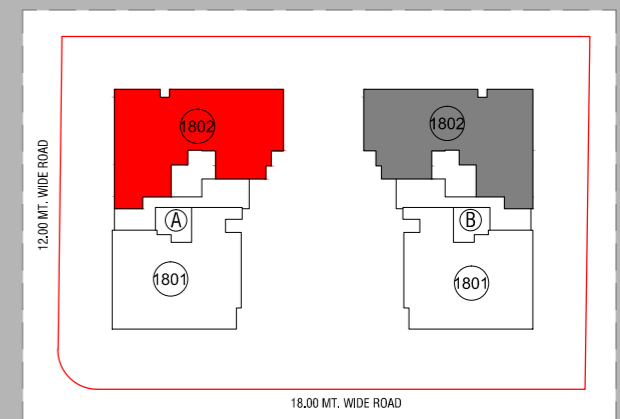
**BLOCK-A UNIT PLAN (2ND TO 15TH FLOOR PLAN)**



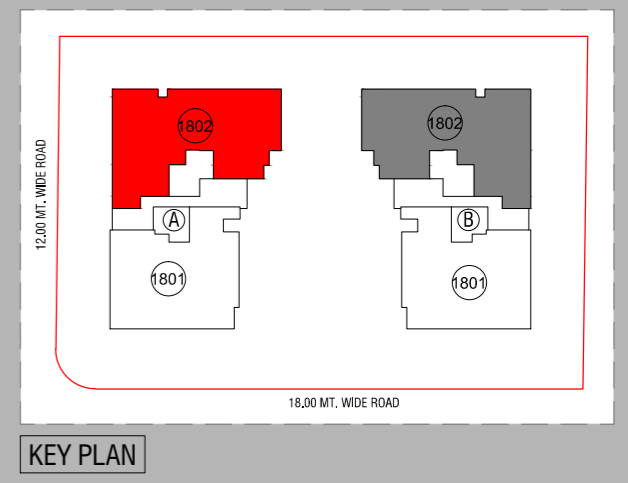
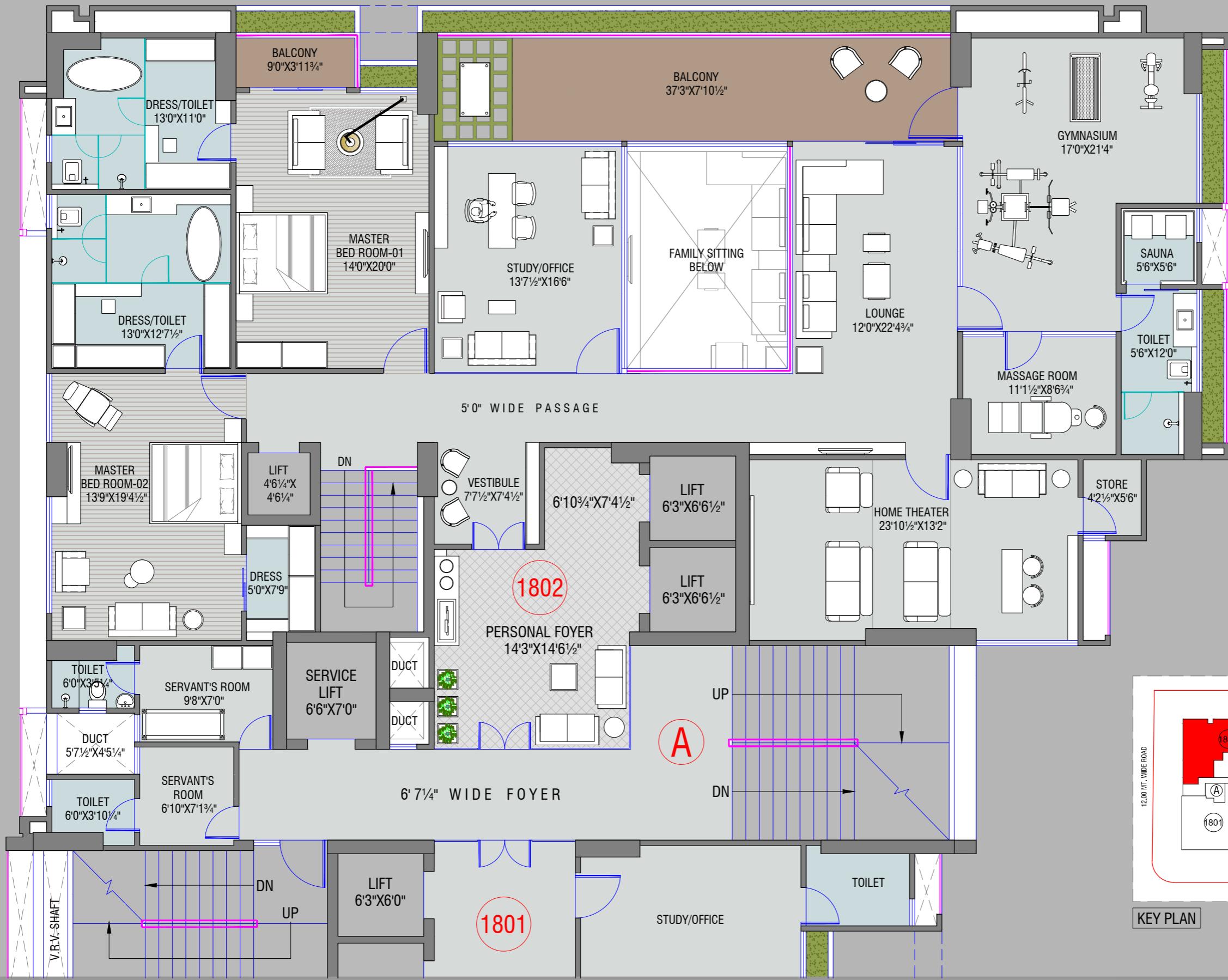


KEY PLAN



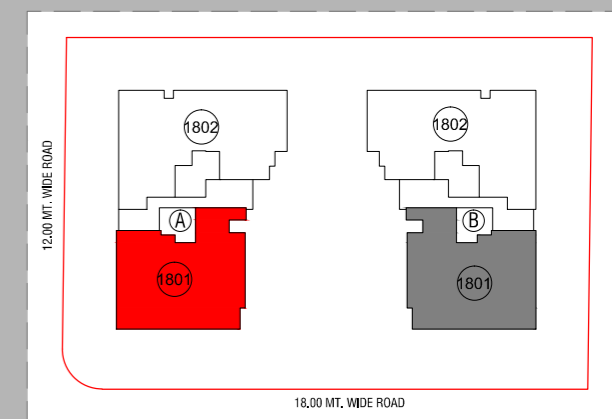
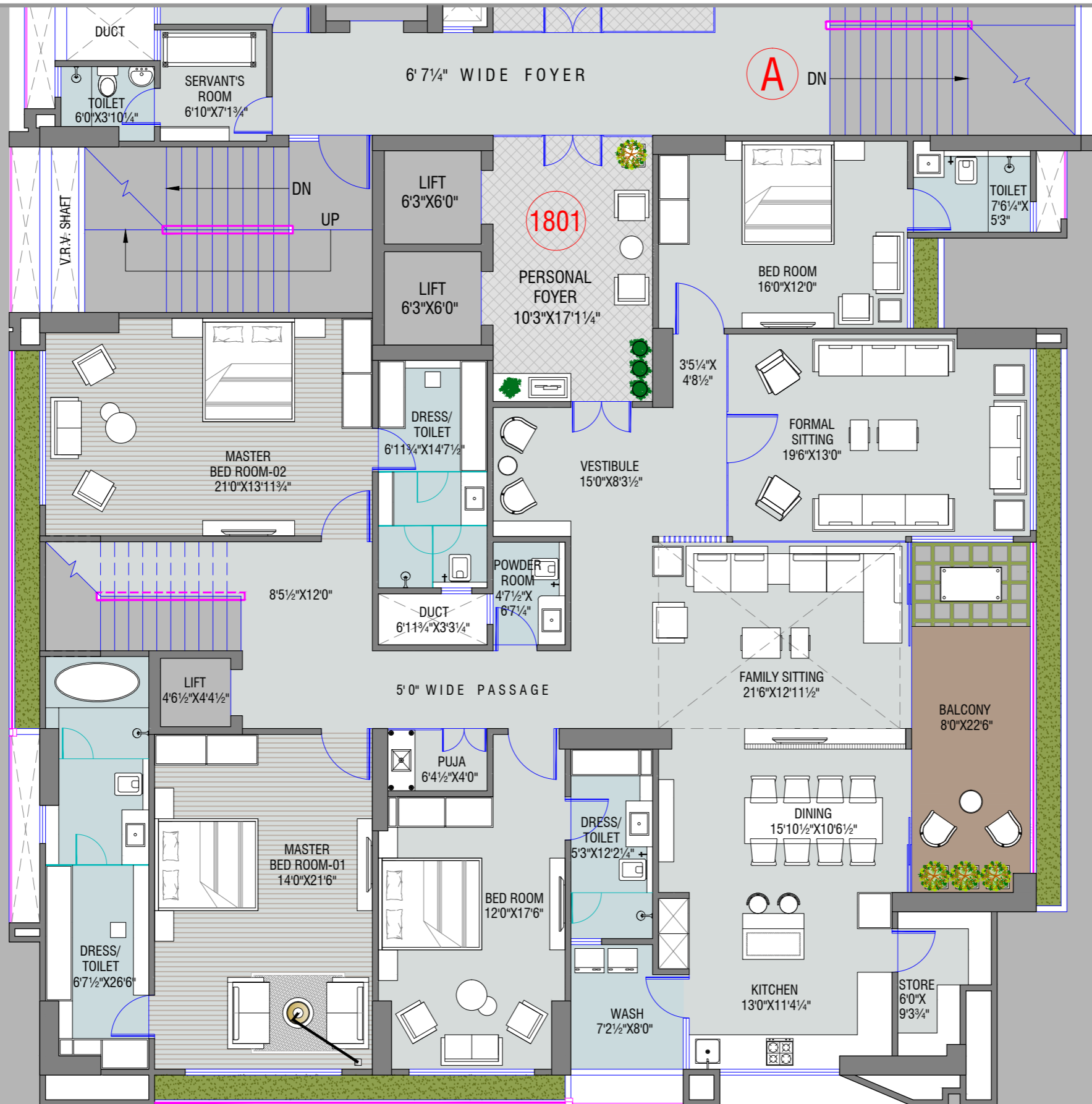


KEY PLAN



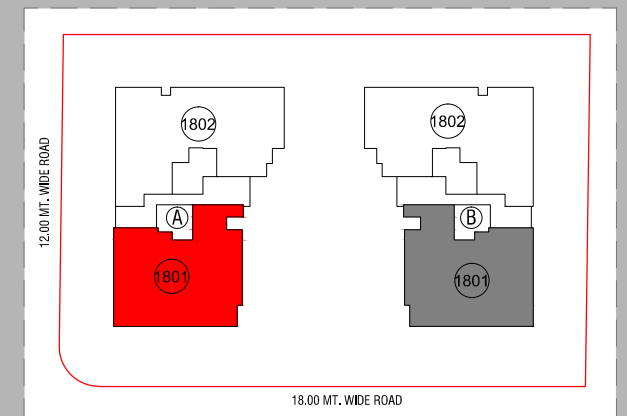
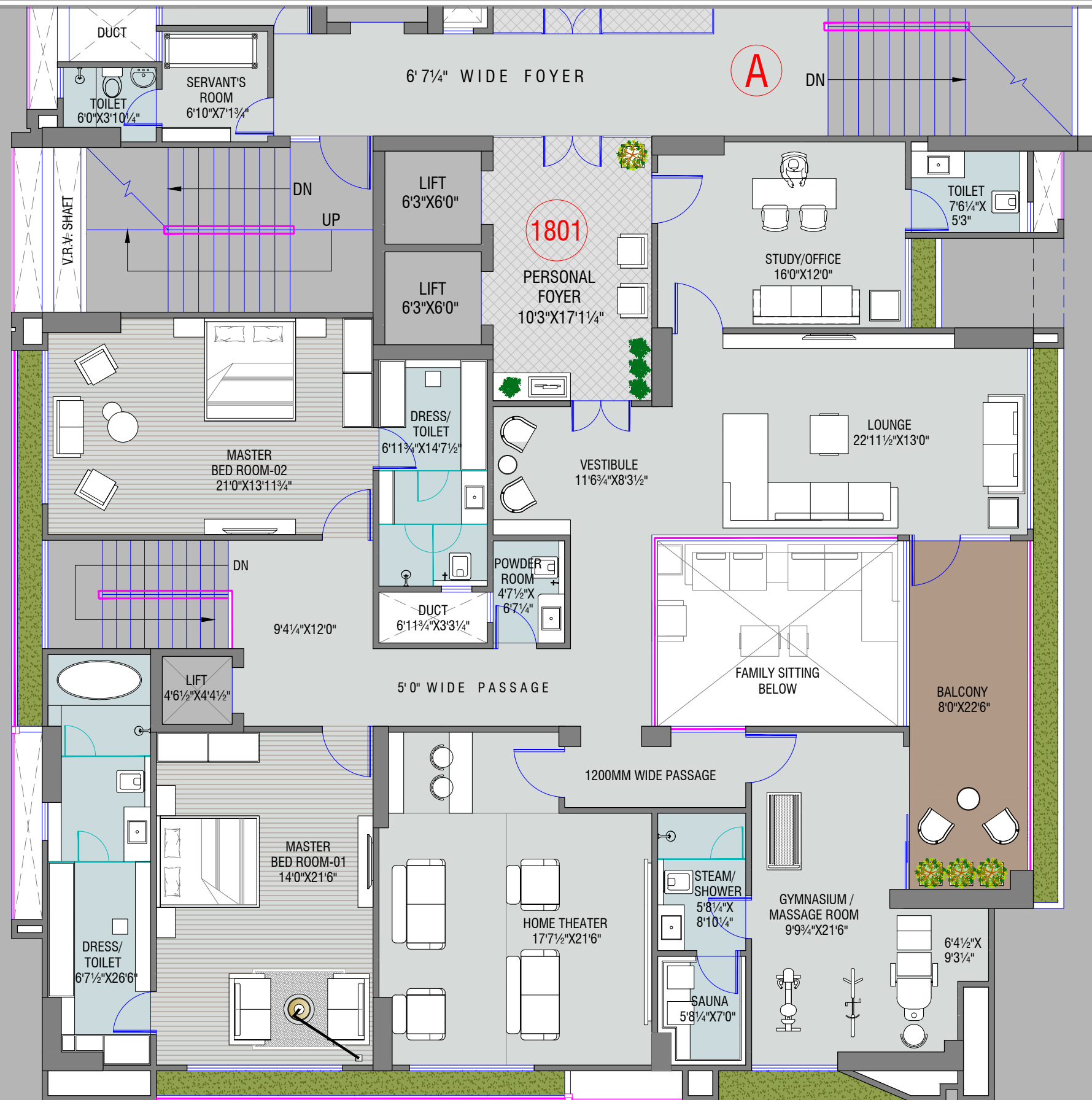
PROPOSED PLAN  
AT AMBLI BOPAL ROAD, AHMEDABAD

BLOCK-A UPPER DUPLEX FLOOR PLAN (17TH, 19TH FLOOR PLAN)

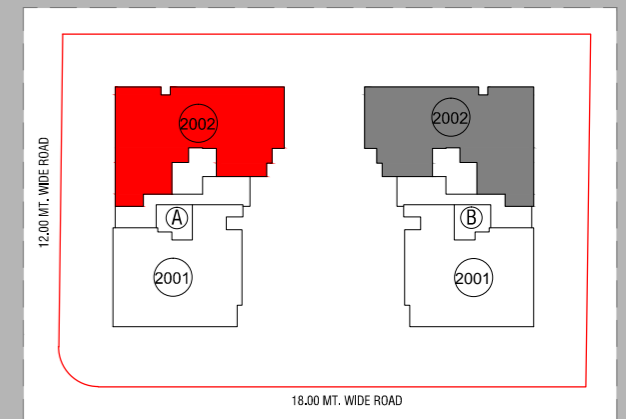


KEY PLAN



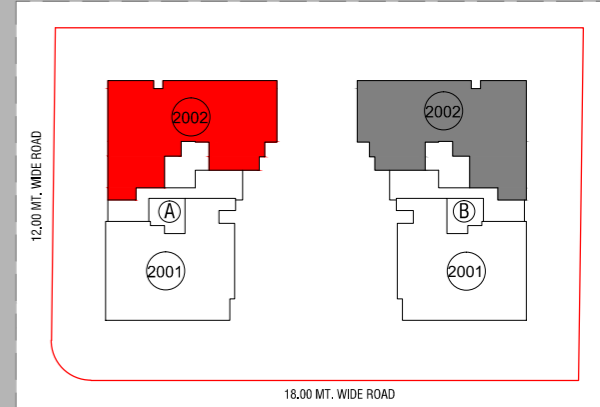
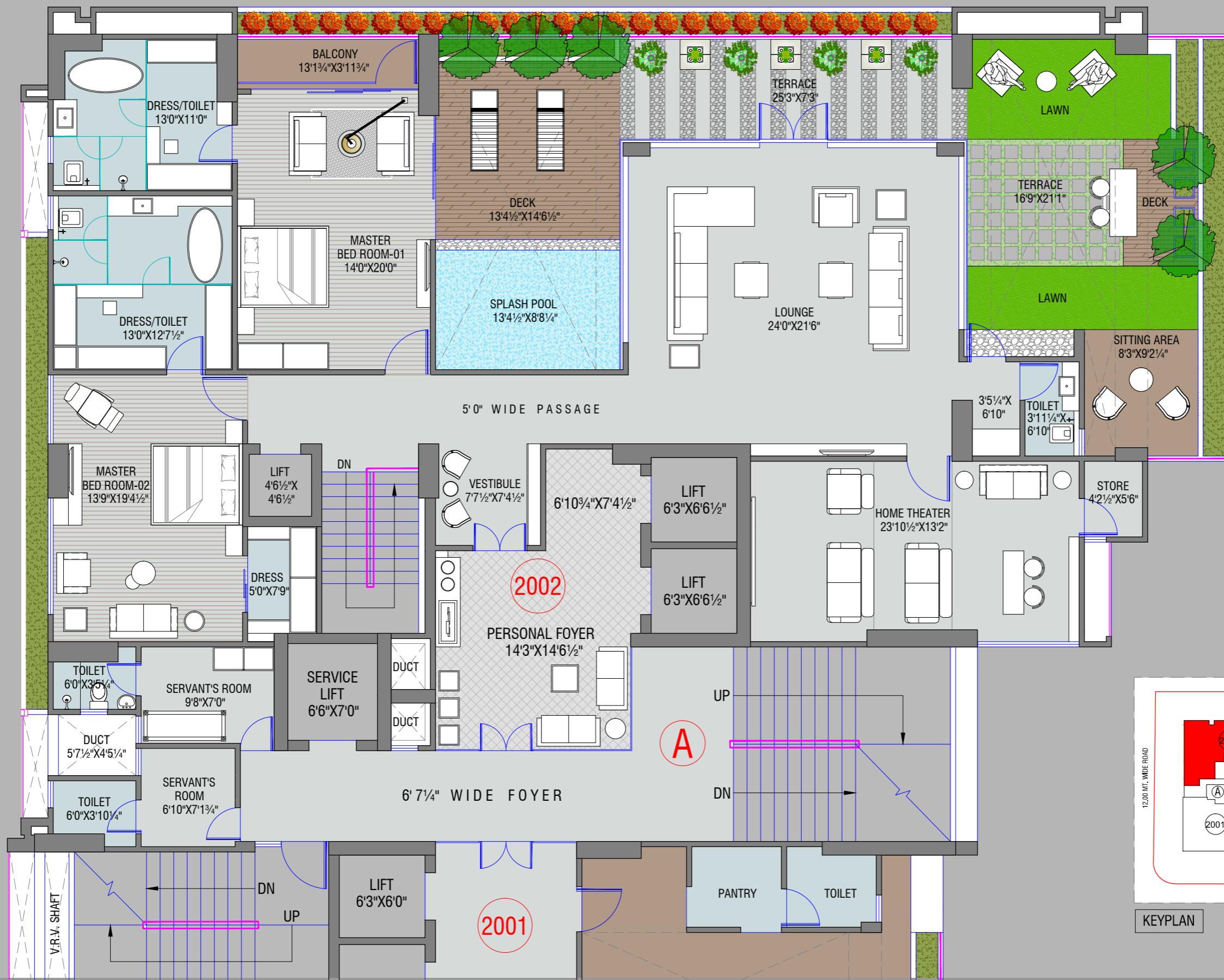


KEY PLAN



KEYPLAN

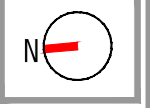




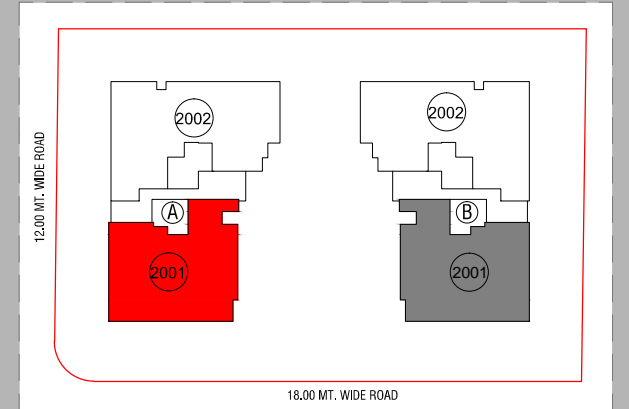
KEYPLAN

PROPOSED PLAN  
AT AMBLI BOPAL ROAD, AHMEDABAD

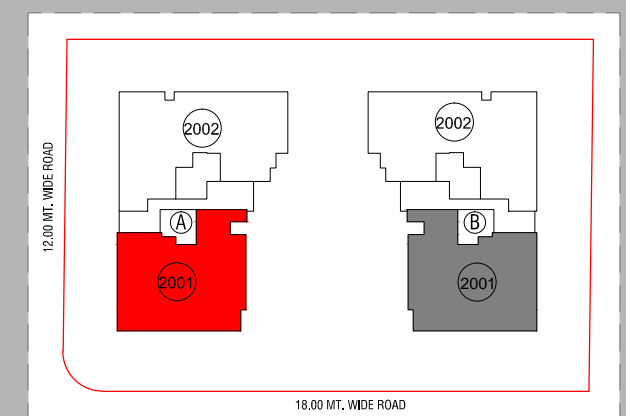
BLOCK-A UPPER PENTHOUSE FLOOR PLAN (21ST FLOOR PLAN)







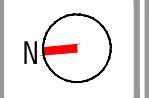
KEYPLAN



KEYPLAN

PROPOSED PLAN  
AT AMBLI BOPAL ROAD, AHMEDABAD

BLOCK-A UPPER PENTHOUSE FLOOR PLAN (21ST FLOOR PLAN)



## features

- 75 meter height of a building giving an open view from all four sides.
- Exclusive of 68 units which includes 4 limited lavish penthouses & duplex.
- 2 units per floor
- With 5 lifts and 2 staircases of each tower.
- Personal foyer in each apartment upto 180 sq. ft.
- 2 high speed elevators that open to the personal foyer of each wing.
- Exclusive service elevators.
- Adequate spaces for residents and visitors in 4 levels of parking.
- 4 car parking for each apartment.
- VRV packaged units of air conditioning.
- Italian marble flooring in all rooms except wet areas.
- Hansgrohe/Grohe/Duravit/Toto or equivalent bathroom fittings.
- Column less area of formal living, family living and dining room.
- High tech security system.
- CCTV surveillance at strategic locations.
- 3 phase power connection.
- Generator power back up for common amenities.
- Pressurized water distribution.
- Rain water harvesting.
- Heat pump & centrally hot water system.
- DGU glazing in windows.
- Floor to floor height 10'11".

## amenities

- Centrally air-conditioned club house.
- Indoor games and play area.
- Welcoming entrance.
- A multipurpose hall inside the property for hosting everything worth celebrating.
- Lounge with ample sittings and well stocked library.
- Indoor swimming pool with kids pool.
- Spa with steam sauna & massage room.
- Pleasant sit outs.
- Children play Area.
- A fully equipped gymnasium with aerobics hall.
- Life like visual and sound experiencing cinematic home theater.
- Toddler's area.
- Stress relieving Jacuzzi.

## services

- Concierge
- Bell desk
- 24-hour security





## ॥ णमोकार मंत्र ॥

णमो अरिहंताणं,  
णमो सिद्धाणं ,  
णमो आयरियाणं ,  
णमो उवज्झायाणं,  
णमो लोए सव्व साहुणं,

एसो पंच णमोक्कारो, सव्व पावप्पणसणो।  
मंगलाणं च सव्वेसिं, पढमं हवइ मंगलं।।



**JAIN TEMPLE**

CARRY FORWARD  
THE VALUES YOUR FAMILY  
TAUGHT YOU.





# “घराना”

STORIES OF ROYALS

An empire of your own.  
Mirrored by imagination and dreams.  
Naturally ushered with unparalleled luxury.  
Meticulously crafted with sophistication and harmony.



WORLD-CLASS LIVING  
EXPERIENCE FOR LIFE!

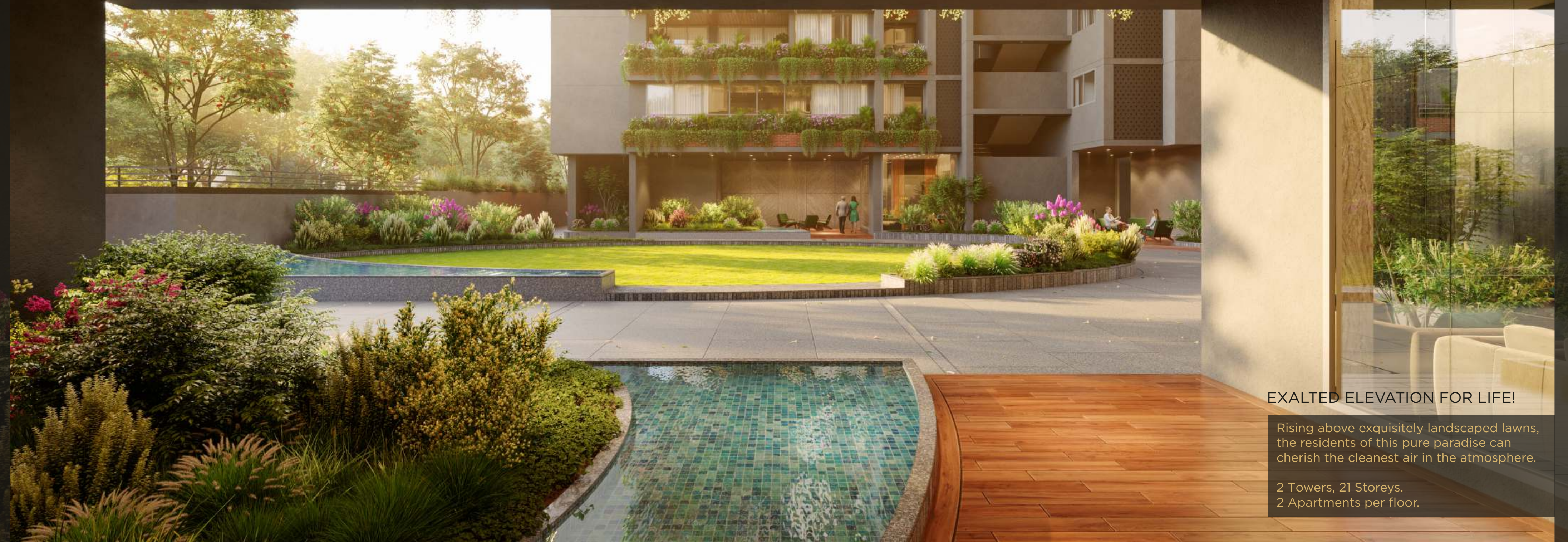
Uber-modern, ultra-luxurious project  
offering rare luxury spaces that will  
turn your everyday life into a charmic mosaic of moments.

Exclusive opulence for the select few.  
Much more than comfort.





Breathe in. Breathe out.  
Yes, it's fresh air... An exquisitely designed landscape.



**EXALTED ELEVATION FOR LIFE!**

Rising above exquisitely landscaped lawns, the residents of this pure paradise can cherish the cleanest air in the atmosphere.

2 Towers, 21 Storeys.  
2 Apartments per floor.





THE GRANDEUR OF HIGH LIVING!

Connoisseurs of culture,  
an epitome of excellence,  
it's a banquet of lifelong experiences.

More than a landmark,  
it's an icon of excellence.



Envisaging the homes of the future.

WELCOME TO A CHOSEN WORLD FOR YOU!

Construction to be done by  
HITECH

Landscaping and Interiors to be done by  
NILESH KAVA

Architect  
MOHIT GAJJAR

Structure Engineer  
DUCON

Your modern haven rises over lush foliage.  
Everything here comes together perfectly to give you  
the richness of your persona that you've always wanted.

EXCEPTIONAL ARCHITECTURE  
BECAUSE YOU DESERVE THE BEST.

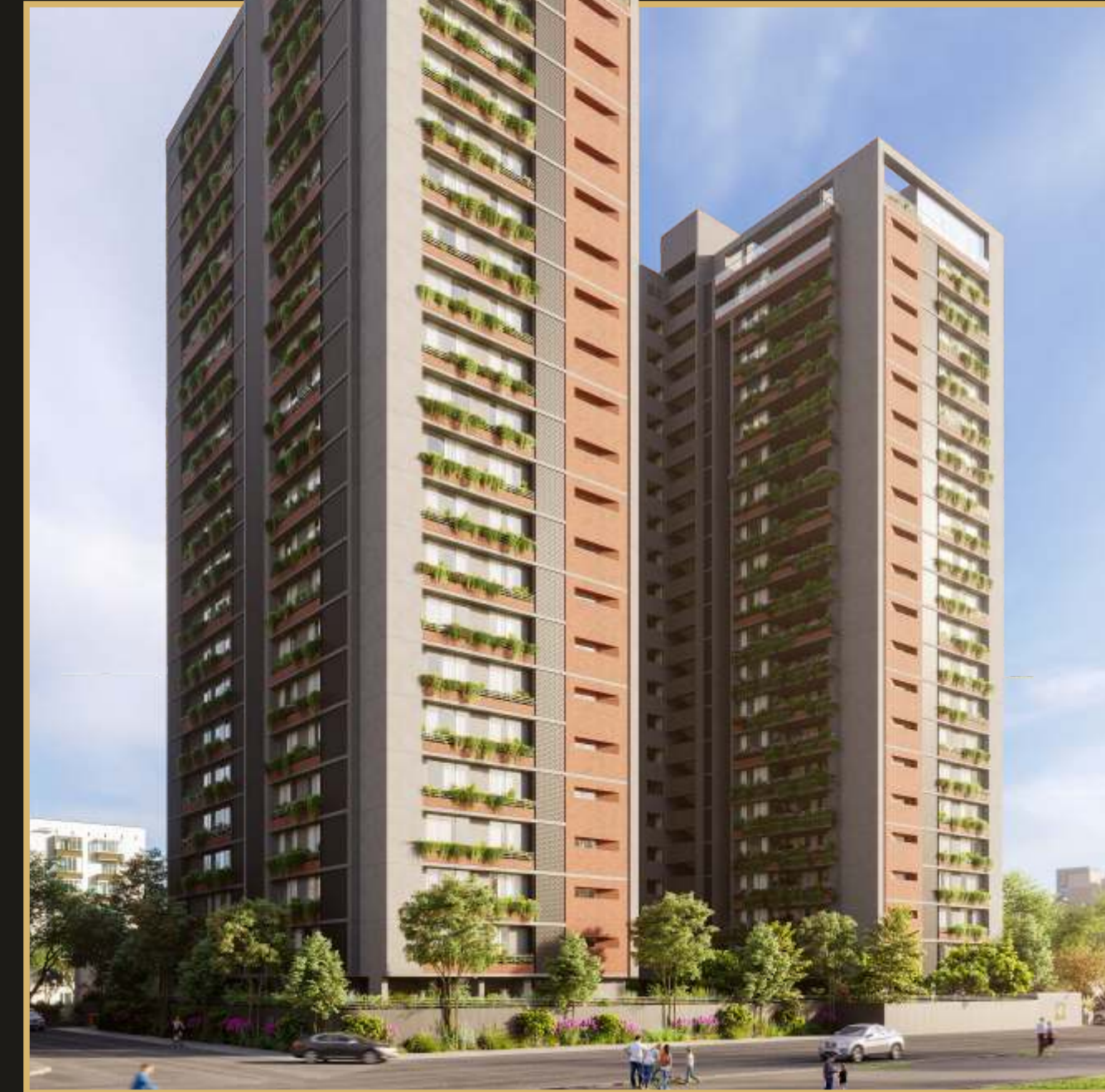


A RARE FIND-IT'S A CELEBRATION FOR LIFE!

A glorious coalescence of modern luxury and international finesse. This development offers a limited selection of 5, 6 and 7-bed apartments, quite unlike any in the city.



Like-minded neighbours  
you'll get along with.



LUXURIOUS HOSPITALITY FOR LIFE!

An Array of exclusive landmarks brought together in  
close proximity to the most celebrated areas of the city.

# swimming pool



# café



With a stunning experience of the views ahead,  
the leisurely pool invites you to indulge in a complete sense of bliss.

Adding the perfect ingredients to live life just the way it should be,  
there's never a mundane moment in the soulful brasserie.

library



gymnasium



Rich atheneum with expansive views across a glass facade takes your reading experiences to the next level.

Fitness regimes at exclusive spaces are always invigorating.

# theater



# aerobics



Rejuvenate yourself in the best comfort and tranquility, festooned with the best, clean and modern architecture.

Pamper your body and mind in graciously designed spaces with natural light and ventilation.

## amenities

## features

- **75 meter** height of a building giving an open view from all four sides.
- Exclusive of **72 units** which includes 4 limited lavish penthouses & duplex.
- **2 units** per floor.
- With **5 Lifts** and **2 staircases** of each tower.
- Personal foyer in each apartment upto **180 sq. ft.**
- **2 high speed elevators** that open to the personal foyer of each wing.
- Exclusive **service** elevators.
- Adequate spaces for residents and visitors in **4 levels of parking.**
- **4 car** parking for each apartment.
- **VRV** packaged units of air conditioning.
- **Italian marble** and **Royal Wooden** flooring in all rooms except wet areas.
- **Hansgrohe/Grohe/Duravit/Toto** or equivalent bathroom fittings.
- **Column less area** of formal living, family living and dining room.
- High Tech **Security System.**
- **CCTV** surveillance at strategic locations.
- **3 Phase** Power Connection.
- Generator Power back up for **common amenities.**
- Pressurized **water** distribution.
- **Rain** water harvesting.
- Heat pump & centrally hot **water system.**
- **DGU** glazing in windows.
- Floor to floor height **10'11"**.

1. This is only a draft brochure made for the purpose of registration and not marketing. Interested Buyers may get the final copy from our office once RERA registration is awarded. This is Draft brochure and is subject to change after RERA Registration which will include the final specifications, RERA Reg. No and website details in it.
2. "This is not an advertisement within the meaning of RERA. This is not an offer, an invitation to offer and/or commitment of any nature. The images are for primary impressions and for representation purpose only. This information is presented as indicative general information and no warranty is expressly or impliedly given that the completed development will comply in any degree with such artist's impression or represented images as depicted. All content relating to this project are provided solely for the purpose of information and reference. The brochure is subject to change in case of revised plan and RERA project alteration. We reserve the right to provide certain insertions of detailed layout plan pertaining to the specific unit/building/wing to the recipient. The sale is subject to terms of application form and Agreement for sale. The recipient is deemed to have been notified and agreeable to the same."



