

LOCATION MAP



*Map Not to Scale

Important Destinations :-

- Bhosari Chowk - 2 kms
- Nashik Phata - 8 kms
- Pimpri Railway Station - 12 kms
- Pune Airport - 15 kms
- Pune Railway Station - 21 kms

Health Care :-

- Sainath Hospital - 500 mtrs
- Accord Hospital - 1 km
- Anand Multi Specialty Hospital - 3.8 kms
- PCMC Hospital - 4.4 kms
- YCM Hospital - 7.9 kms

Entertainment Hotspots :-

- Spine City Mall - 500 mtrs
- Jai Ganesh Samrajya Chowk - 1 km
- The Goldfields - 4.5 kms
- City One Mall - 9 kms
- Central Mall - 9 kms

Education :-

- Sadhu Vaswani International School - 1 kms
- Gayatri English Medium School - 2 kms
- Motilal Talera English Medium School - 2 kms
- Abhishek International School - 2.5 kms
- Arise International School - 2.5 kms

Work Spaces :-

- Bhosari MIDC - 2 kms
- Tata Motors - 5 kms
- Mahindra & Mahindra Ltd Two Wheeler Division - 8 kms
- Talawade MIDC IT Park - 11 kms
- Hinjewadi Phase1 - 20 kms



MahaRera Reg. No.
P52100076665

Site Add : The Pearl, Plot No.97/12, Sector - 09,
RTO Link Road, Moshi, Pimpri - Chinchwad, Pune - 412105

Call : 8390 9000 62

Disclaimer : All plans, drawings, amenities, facilities etc. are subject to the approval of the respective authorities and would be changed, if necessary. The discretion remains with the developer. All rendering, floor plans, pictures and maps are the artist's conceptions and not actual depictions of the building, its walls, roadways or landscaping. This brochure is for guidance purpose only and not a legal document. This brochure should also not be reproduced, copied or made available to others in any form of transmission. The Design & specifications depicted in the brochure are subject to change without prior notice. Proposed development as mentioned in the brochure is subject to approval of competent authorities. This is not an offer document.

Your search for the finest ends here...



THE PEARL
Brilliance Redefined

*To get more out of life,
we have to delve deeper...*





THE PEARL

Brilliance Redefined



*Only then will life
bless us with brilliance*

Just as bringing a pearl out of the ocean requires perseverance & luck, we bring The Pearl. Designed meticulously using modern techniques & aesthetic appeal, this Pearl is surely the 'Gem' in comparison to any other home available.

- ✦ G+7 storeyed residential building @ Moshi Pradhikaran
- ✦ Exclusive 3BHK with terrace flats
- ✦ Lavishly designed grand entrance lobby

*Excellence gets
a new address*



Experience the epitome of luxury. Life couldn't be better.
We present you a home with a breath-taking location & amazing accessibility.

-  Natural environment with pollution free green zone
-  2 min. drive from Spine City Mall
-  2 min. drive from Pune International Exhibition and Convention Center
-  5 min. drive from Pune Nashik Highway
-  Proximity to civic facilities viz.
 - Tata Moters and MIDCs
 - Numerous International Schools
 - Hospitals, Banks, Markets



Opulence in every inch

STRUCTURE

- RCC frame structure

FLOORING

- 600mm X 1200mm Tiles in Full Apartment
- Anti-Skid Tiles In Terraces
- Designer Dado Tile in Washrooms
- Anti-Skid Ceramic Tiles in Washrooms and Dry Balcony (Flooring)
- Granite / Marble / WPC Door Frames In All Washrooms

KITCHEN & DRY BALCONY

- Granite / Artificial Top Kitchen Platform with SS Sink
- Up to 2 feet Dado Tiles in Kitchen
- Washing Machine Point in Dry Balcony
- Provision for Exhaust Fan Point
- Ample Electrical Points
- Provision for Water Purifier Points

ELECTRICAL

- Concealed wiring with Modular switches
- Provision for Internet & Inverter Points
- AC Point in All Bedrooms
- Electrical Exhaust Fan Points in Kitchen & Washrooms

WINDOWS & GRILL

- Granite Sill for All Windows
- 3 Track Powder Coated Aluminium Sliding Windows with Mosquito Mesh
- Safety Grills for All Windows
- Aluminium Louvers with Exhaust Fan Provision in Washrooms
- MS / Glass Railing for All Balconies

DOORS & DOOR FRAMES

- Elegant Designer Laminates Finish Main Door
- Digital Lock for Main Door
- Both Side Laminated Doors in Bedrooms
- FRP/PVC/Wooden Door in Washrooms.
- Premium Accessories and Fixtures in All Rooms

WALL FINISH

- AAC Block Masonry
- Sand Faced Internal & External Plaster
- Internal Wall & Ceiling In Gypsum Finish

SOLAR WATER

- In Master Bedroom only

PLUMBING

- Concealed Branded fitting with Hot and Cold Diverter
- Premium Sanitary Fixtures
- Brick Bat/Chemical Double Coat Water Proofing In Washrooms, Terraces & Dry Balconies

PAINT

- Internally Oil Bond Distemper Paint
- Externally Weather Shield Acrylic Paint

LIFT AND LOBBIES

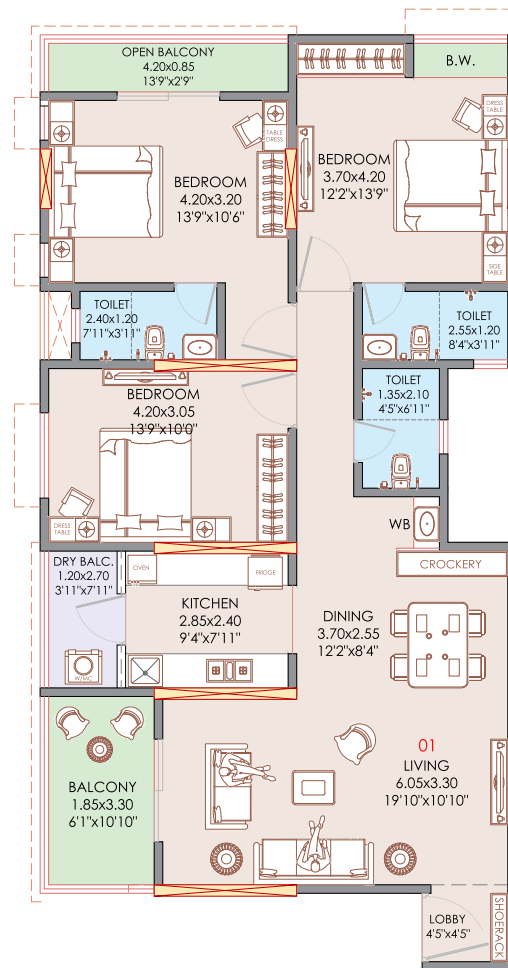
- Designer Lobby at Ground Level
- High Speed Lift with Generator Backup
- Generator Back up for Common Areas



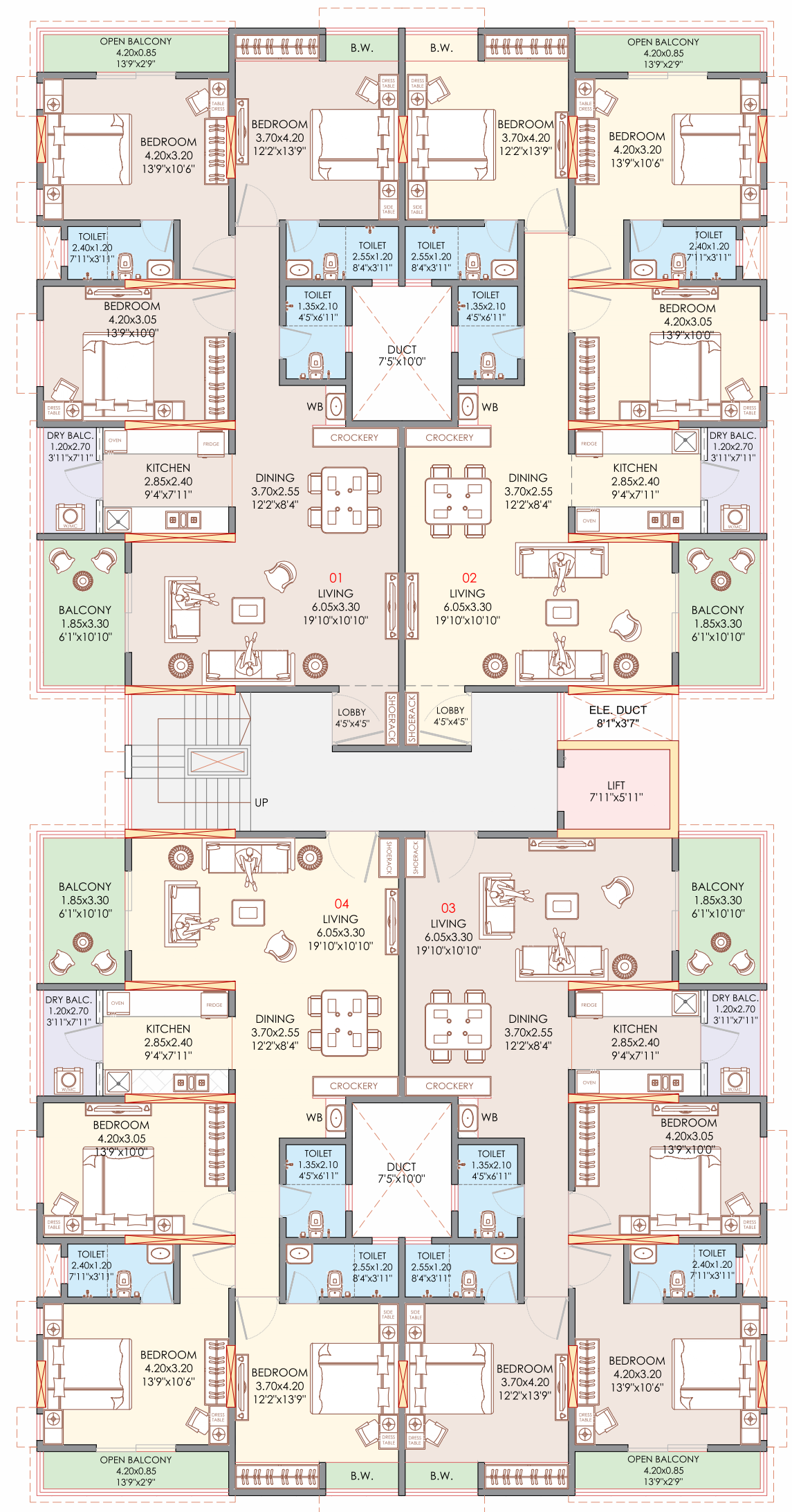
artistic impression



artistic impression



3 BHK HOMES



TYPICAL FLOOR PLAN

