

A REDEVELOPMENT PROJECT BY



☎ 72 72 00 22 44 ✉ info@gunatitinfrastructure.com 🌐 www.gunatitinfrastructure.com

PR/GJ/AHMEDABAD/AHMEDABAD CITY/AUDA/RAA09240/271021
www.gujrera.gujarat.gov.in

Brochure : arshhiten 99252 33555

ONE LIFE.
MAKE IT AWESOME.



3 & 3.5 BHK
ULTRA MODERN LIVING

Infinite possibilities. ONE place.

Whether you have arrived at your destined place in life, or looking forward to retiring and living in peace, **Antilia One** is the place for you. Distinguished homes set amidst soothing nature and a happening lifestyle. **Antilia One** is surrounded by infinity possibilities. So that you live a fulfilling life.

ANTILIA
one.

3 & 3.5 BHK
ULTRA MODERN LIVING



ONE chance to own a piece of paradise.

Antilia One offers meticulously planned 3 & 3.5 BHK homes with a plethora of world-class amenities. Ample light & ventilation flow through the well-planned living and dining rooms. The bedrooms are spacious, with a gorgeous view of the city skyline. Paradise is a state of mind. And a place called **Antilia One!**






ONE decision. A lifetime of happiness.

Antilia One is surrounded by a soothing and relaxing environ on all four sides. Chit-chat under the tree seating area, the beautifully landscaped garden and by the water body. Indulge in unforgettable revelry at the games arena, the well-equipped gym and the kid's outdoor play area.





ONE address. Thousand advantages.

 Antilia One is stone's throw away from S G Highway. Antilia One is in close proximity to hi-end shopping malls, five star hotels, recreational clubs, gourmet restaurants, educational institutions and the best of healthcare facility. It is also an easy drive to the airport, railway station and the expressway from Antilia One.

AMENITIES

18



CLASS
ENTRANCE



SCHOOL BUS
DROP-OFF-ZONE



ENTRANCE FOYER



WAITING AREA



2 ELEVATORS
IN EACH BLOCK



24 HOUR WATER



CLUB HOUSE



GYMNASIUM



CHILDREN
PLAY AREA



INDOOR GAMES



OUTDOOR THEATRE



MULTI PURPOSE
HALL



PATHWAY



OUTDOOR
SEATING



ELDER
SEATING AREA



24 HOUR
SECURITY



FIRE SAFETY
SYSTEM



DG SYSTEM
FOR POWER



A little piece of heaven



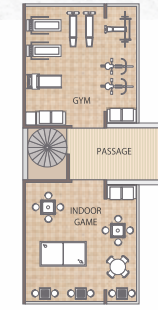
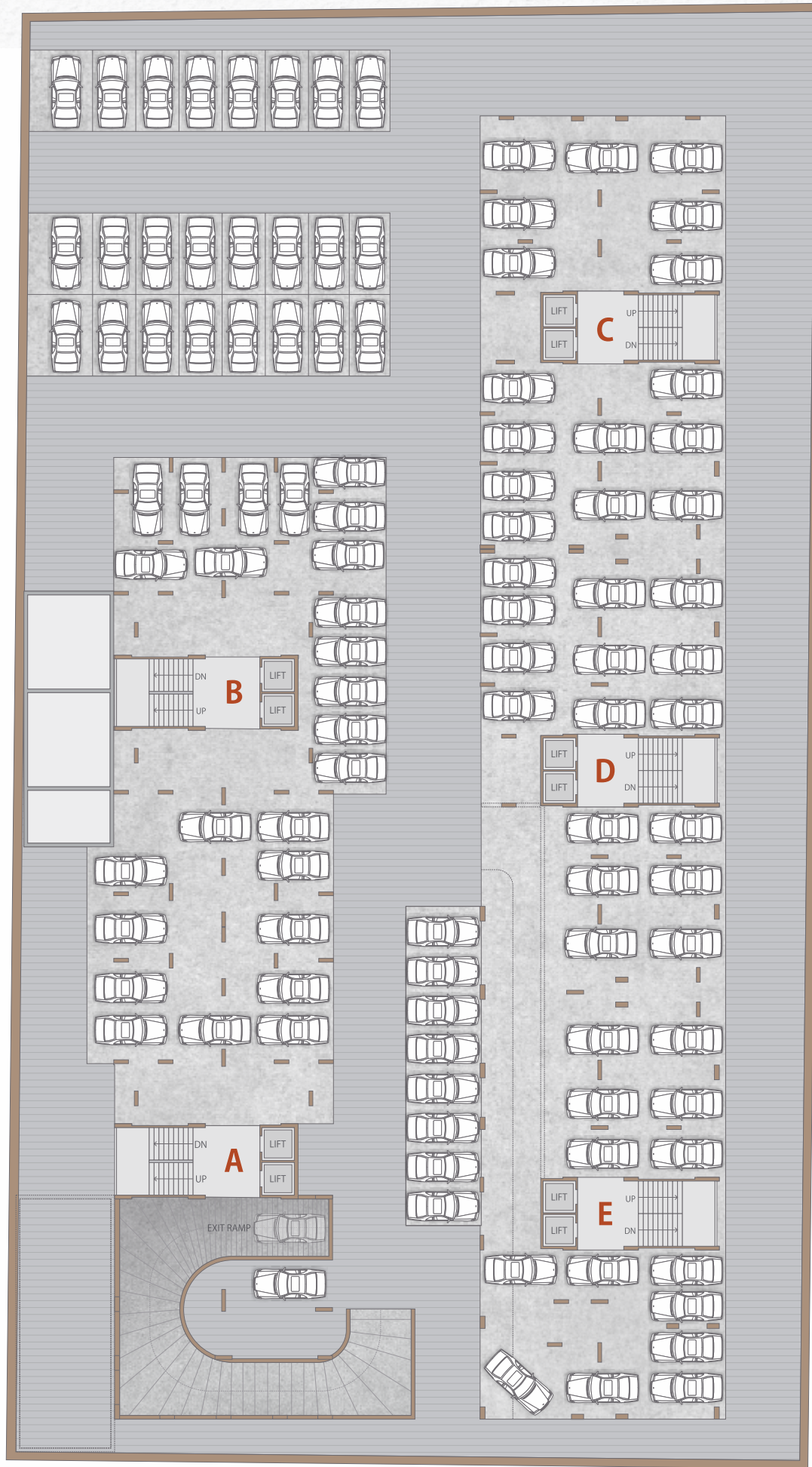
ONE that leaves a lasting impression.



ONE place. Unlimited benefits.

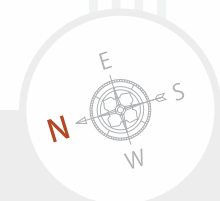


BASEMENT
PLAN

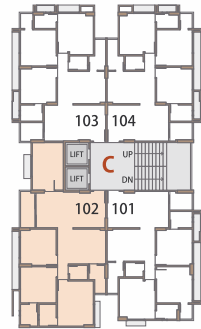


CLUB HOUSE
FIRST FLOOR
PLAN

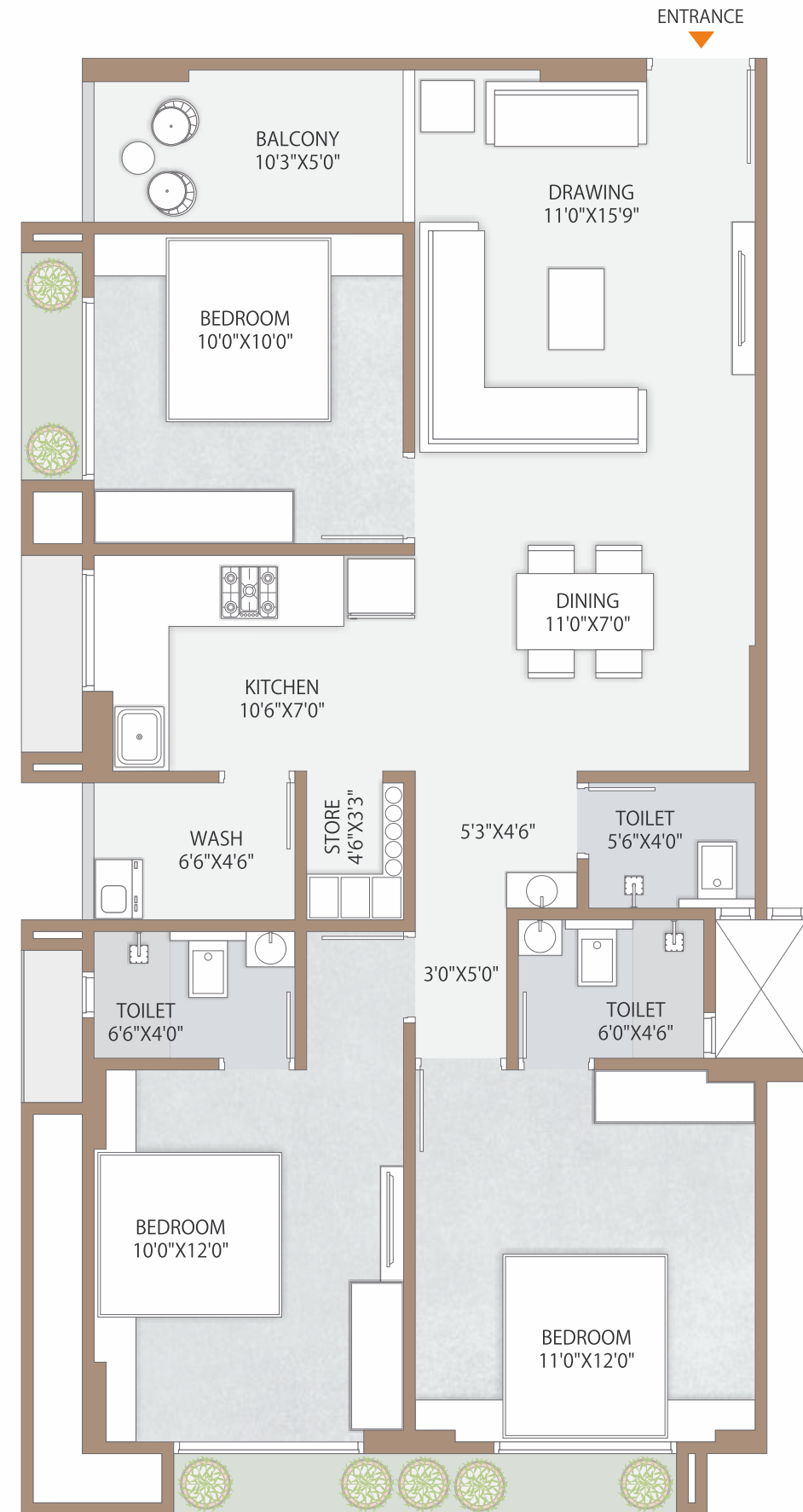
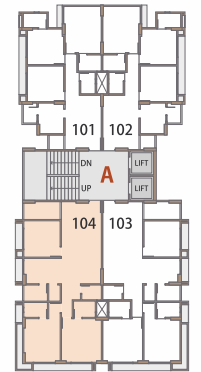
TYPICAL
FLOOR PLAN



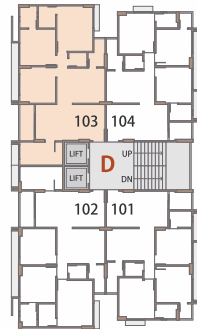
BLOCK-C
193 SQ. YARDS



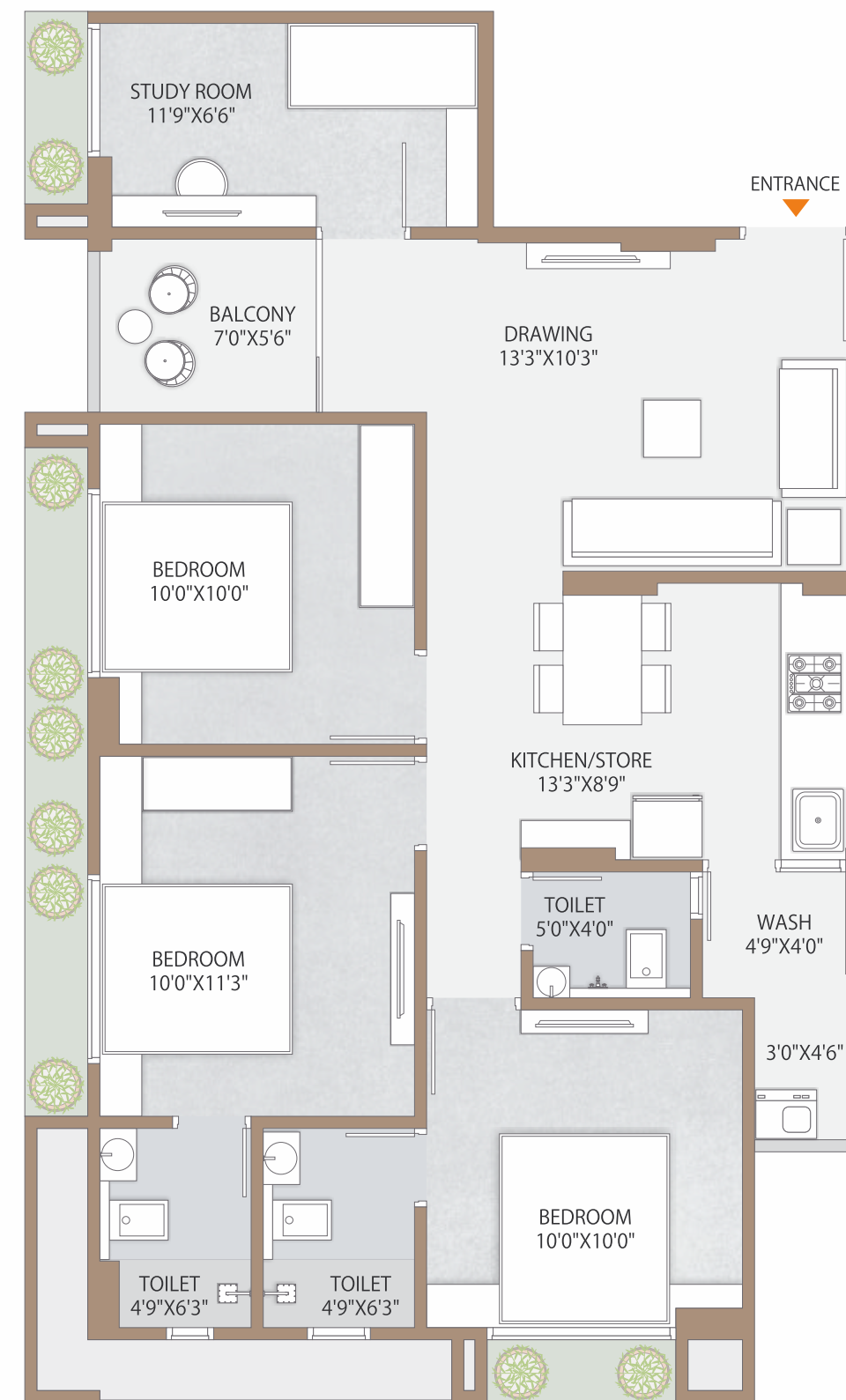
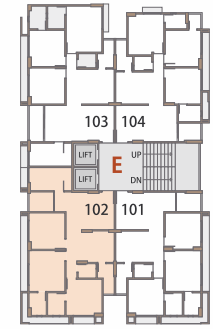
BLOCK-A
190 SQ. YARDS



BLOCK-D,E
186 SQ. YARDS



BLOCK-E
173 SQ. YARDS





ONE space. Eternal memories.

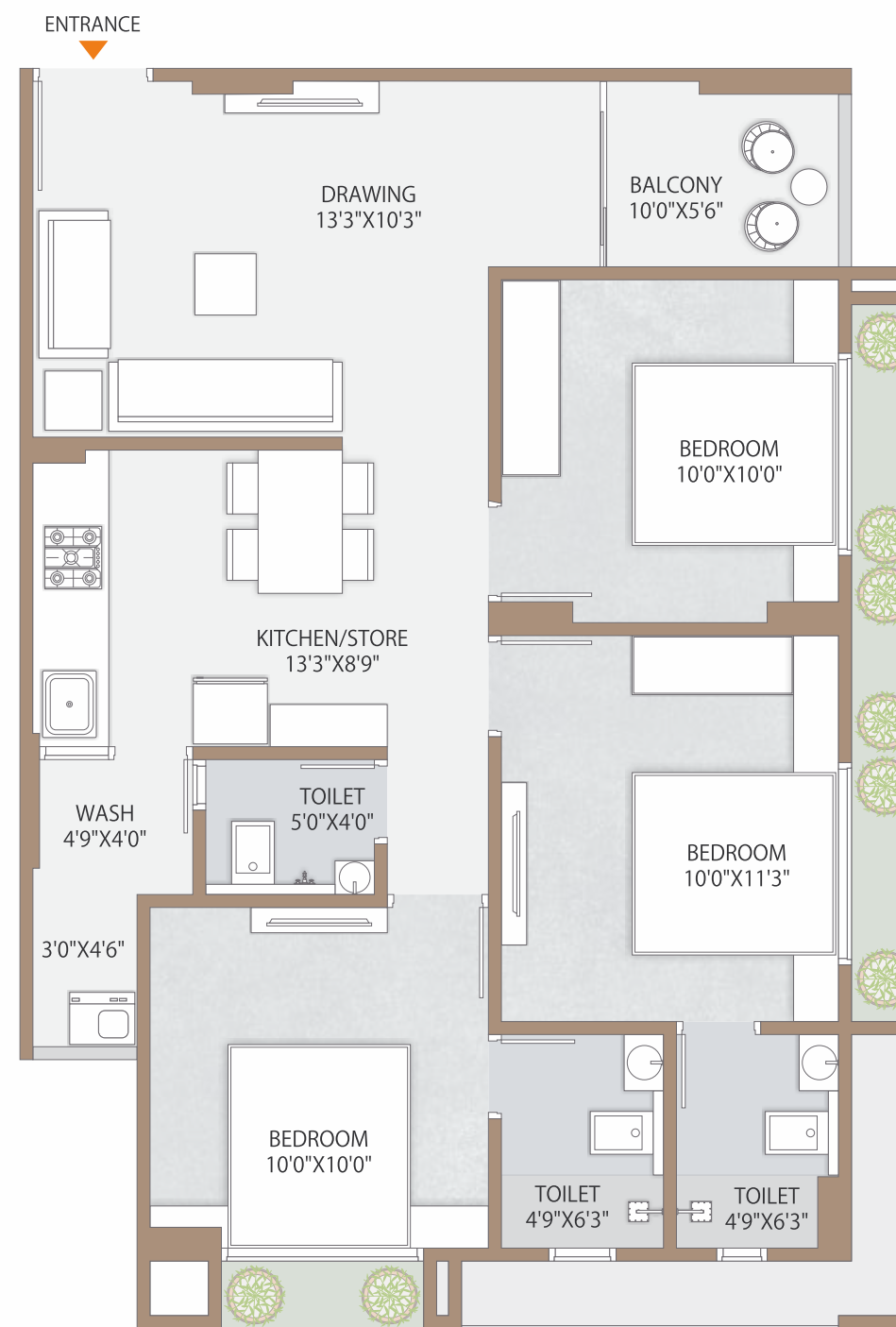
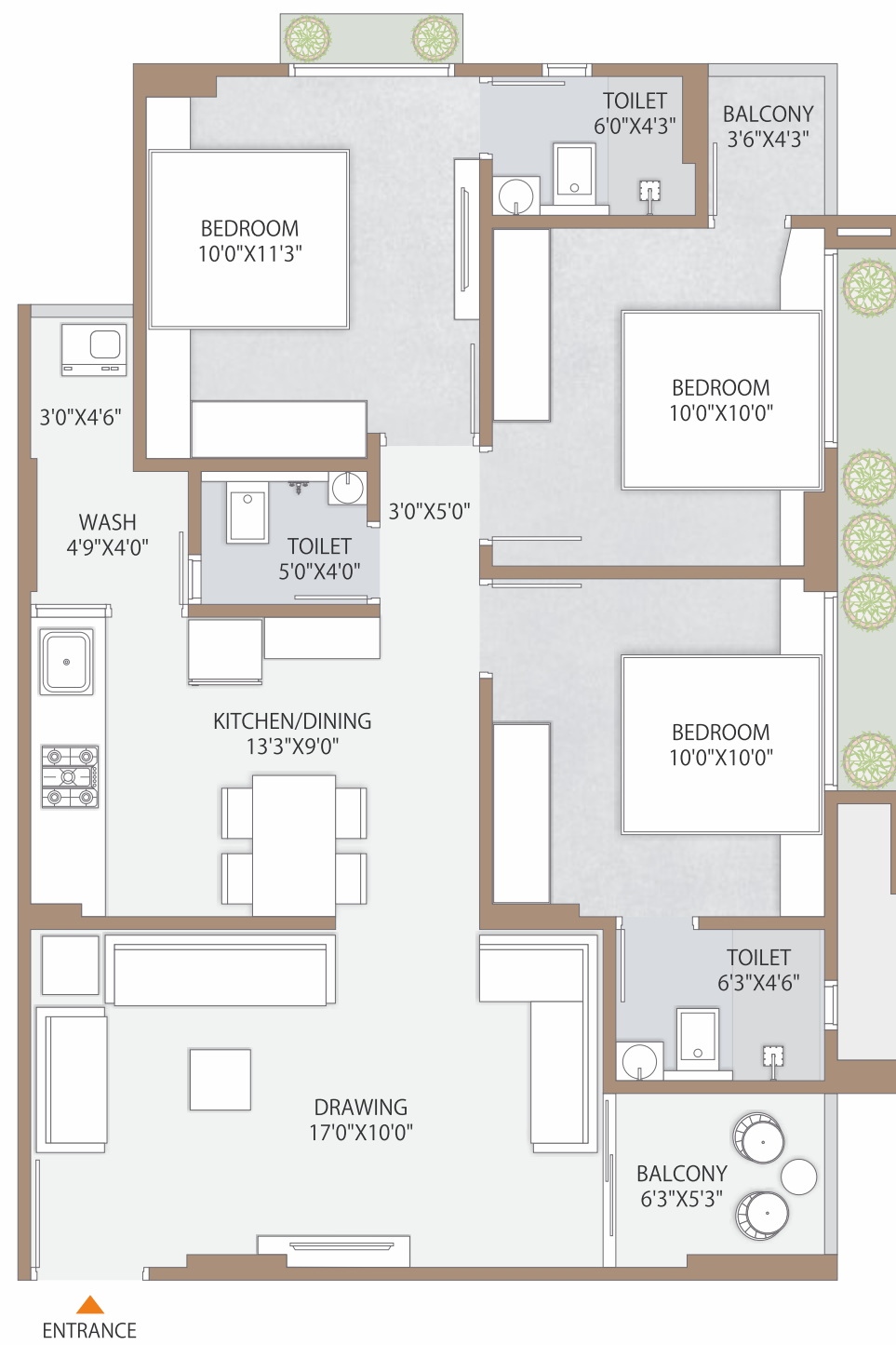
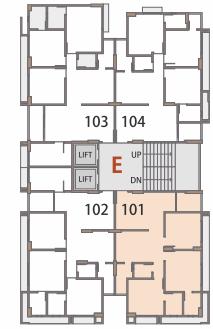
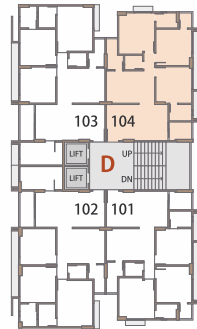


SPECIFICATIONS

- **STRUCTURE**
Quality controlled earthquake resistant, RCC frame structure.
- **FLOORING**
Designer vitrified tile flooring.
- **FINISHES**
Double coat or polymer textured external walls.
Single coat mala plaster as internal walls.
- **PAINT**
Internal : Putty finish and External : Apex / Acrylic / Textured.
- **DOORS**
Main door : Laminate finished door with wooden frame.
Internal door : Pine wood flush doors with wooden frame.
- **WINDOWS**
Aluminium sliding windows with glass.
- **KITCHEN**
Vitrified tiles flooring. Mirror polished black granite platform with S.S. sink.
Decorative tile up to lintel level on the walls and ceramic or glazed tiles below platform.
- **STORE**
Kota stone/granite shelves.
- **WASH AREA**
Kota stone floor with dado of glazed tiles.
- **BATHROOMS**
Glazed / ceramic tile up to lintel level, anti skid floor tiles & exhaust fan point.
- **PLUMBING**
CPVC/UPVC hot and cold water supply pipes.
- **ELECTRICAL**
Three phase concealed electric copper wiring with adequate number of points in all rooms.
TV & Telephone point in drawing room & master bedroom.
A/C point in master bedroom. Premium modular switches.
- **DTH**
Centralized DTH.
- **LIFT**
Fully automatic high speed 2 elevators in each block with 8 person capacity.
- **SECURITY**
24 X 7 Security with CCTV surveillance , Fire safety.

BLOCK-C,D,E
162 SQ. YARDS

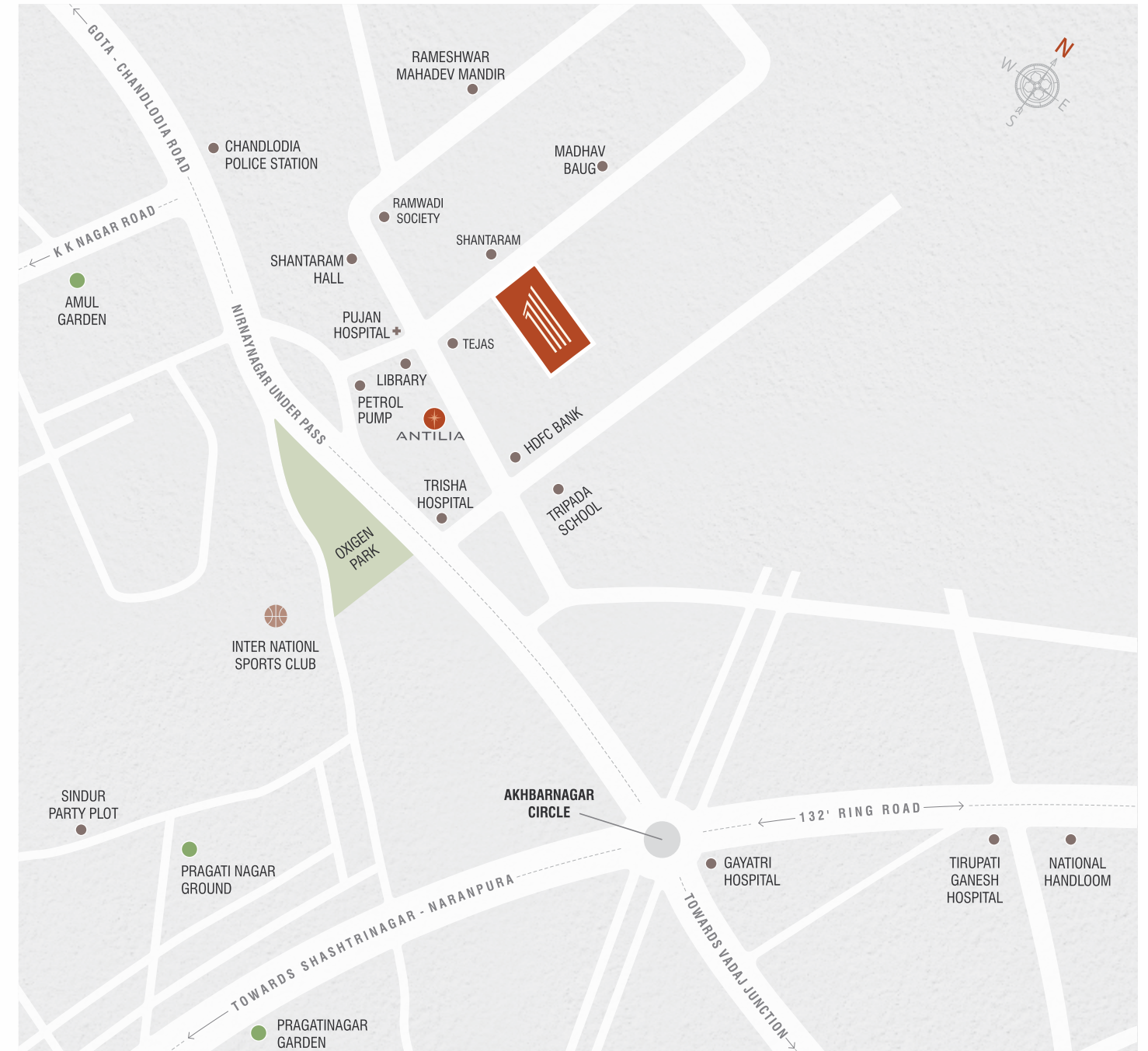
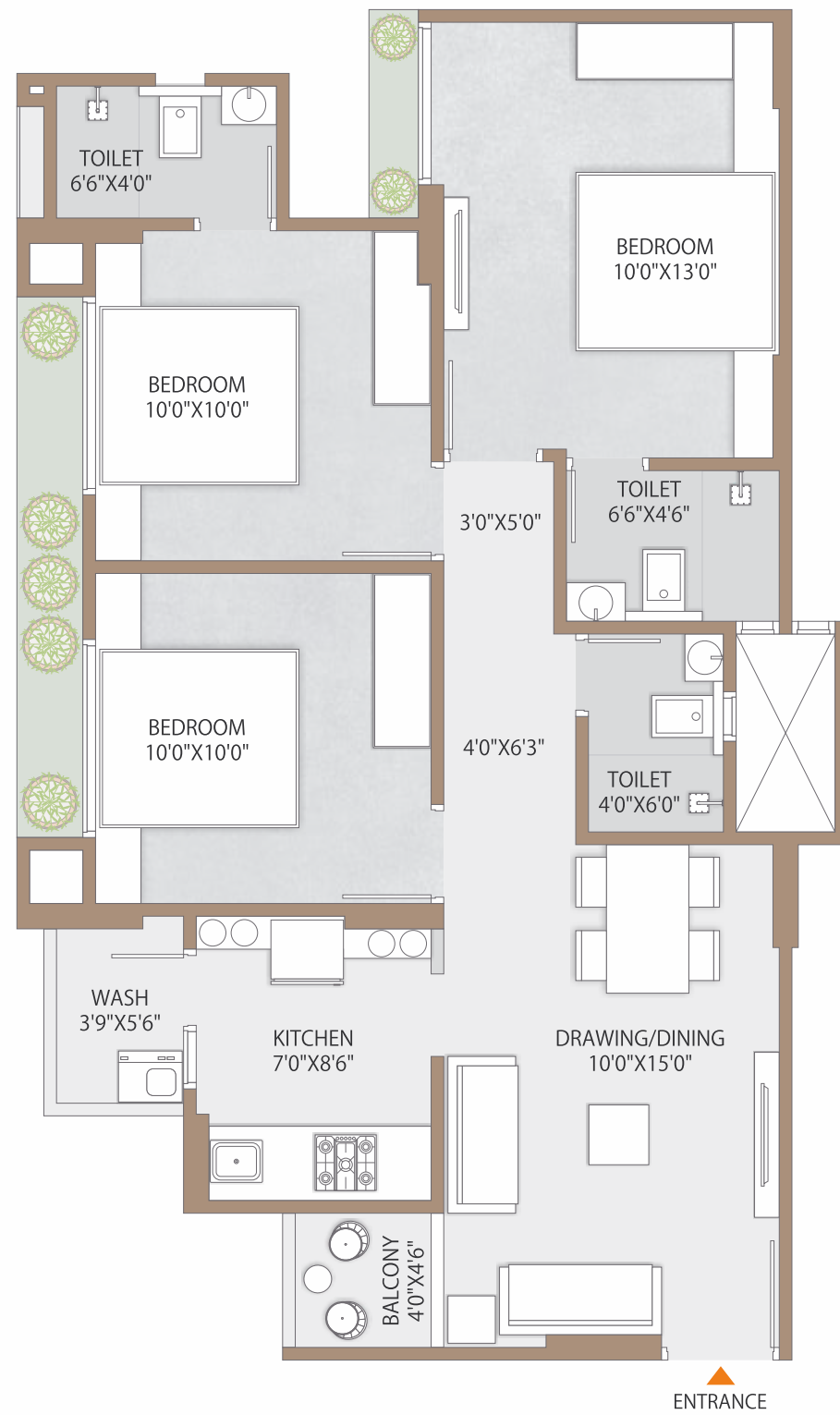
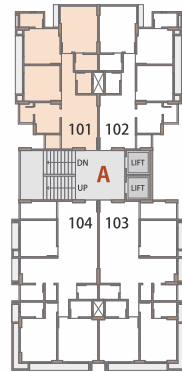
BLOCK-E
157 SQ. YARDS



BLOCK-A, B
147 SQ. YARDS



3 & 3.5 BHK
ULTRA MODERN LIVING



“ANTILIA -1” B/H. TRISHA HOSPITAL, NR. NIRNAY NAGAR UNDER PASS, GHATLODIA, AHMEDABAD - 380 061.

01 Minute From Metro Station	05 Minutes From GSRTC Bus Stop	15 Minutes From Airport	20 Minutes From Kalupur Railway Station	5 Minutes From Ashram Road	5 Schools In The Vicinity	10 Hotels In The Vicinity

Stamp duty and registration charges are to be borne by the purchaser/buyer/legal possession holder. Service taxes, GST or any other/taxes if any to be borne by purchaser/legal possession holder. Legal, A.M.C. charges and Torrent power charges shall be borne by the purchaser/legal possession holder. The developer reserves all rights to make any changes in the scheme, including technical specifications, designs, planning layout, etc. and all the purchasers/legal possession holder shall abide by such changes. Changes/alteration of any nature including the elevation, exterior colour or any other changes affecting the overall design concept & outlook of the scheme, planned by any member/purchaser/buyer/legal possession holder, are not permitted, during or after completion of the scheme. Maintenance charges shall be borne by the member/purchaser/legal possession holder as & when required. This brochure is only for private circulation & not to be considered as a legal document. Measurement shown is not to scale. 10% Cancellation charges. Subject to Ahmedabad jurisdiction only.