

रेनी

C I T Y
AT UPPER KHARGHAR



A TRADITION OF
Serenity

BUILDING WITH THE SENSE OF HISTORY

The Aim Is To Incorporate the Historical Importance Of
Maratha Architecture
and Revisualize the contemporary context.

Giving It a Touch Of History and Culture.

Keeping In Mind The Modern Living Requirements
and Blending The Cultural Aspect To It.

DESIGN FEATURES

GRAND CENTRAL AVENUE

Located in the center of the city, comprising of green space, to harmonize buildings with the surrounding landscape to retain the suburb character.

AVENUES, BOULEVARDS AND ROADS

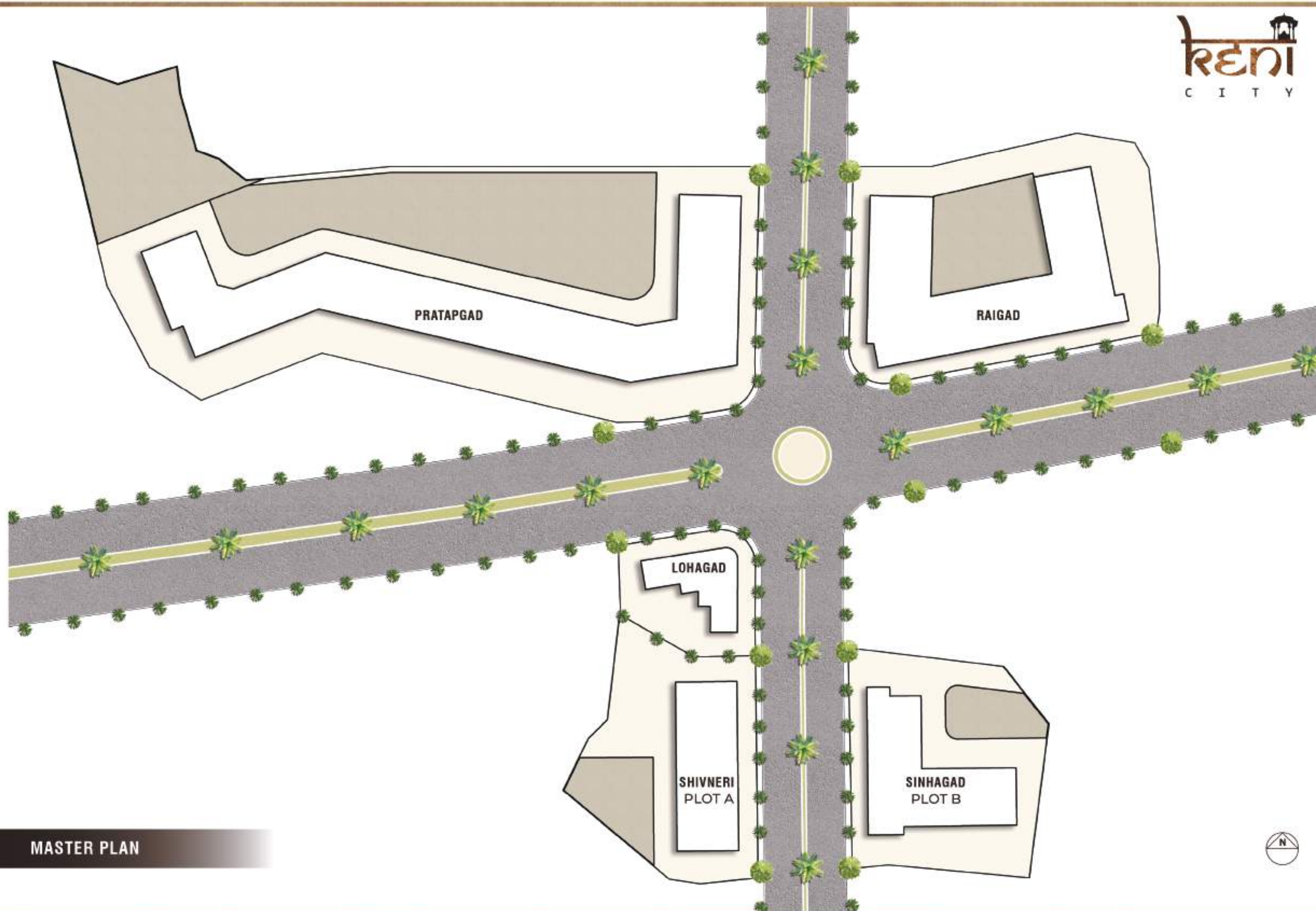
Generous cultural, recreational and shopping amenities in walkable neighborhoods. High quality of residential amenity and acknowledging the beauty of nature.

LANDSCAPE AND AMENITIES

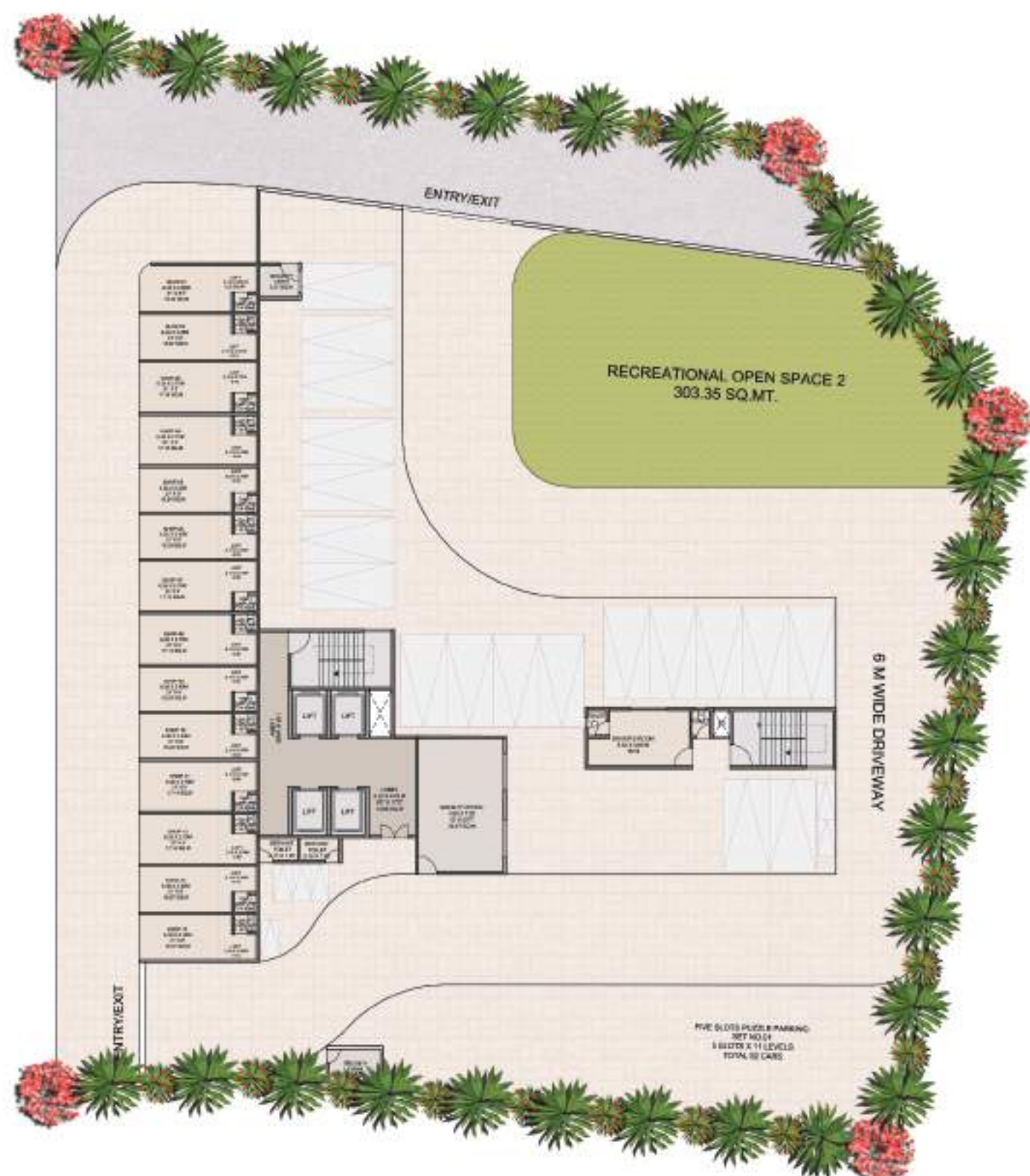
Generous cultural, recreational and shopping amenities in walkable neighborhoods. High quality of residential amenity and acknowledging the beauty of nature.











GROUND FLOOR



TYPICAL FLOOR

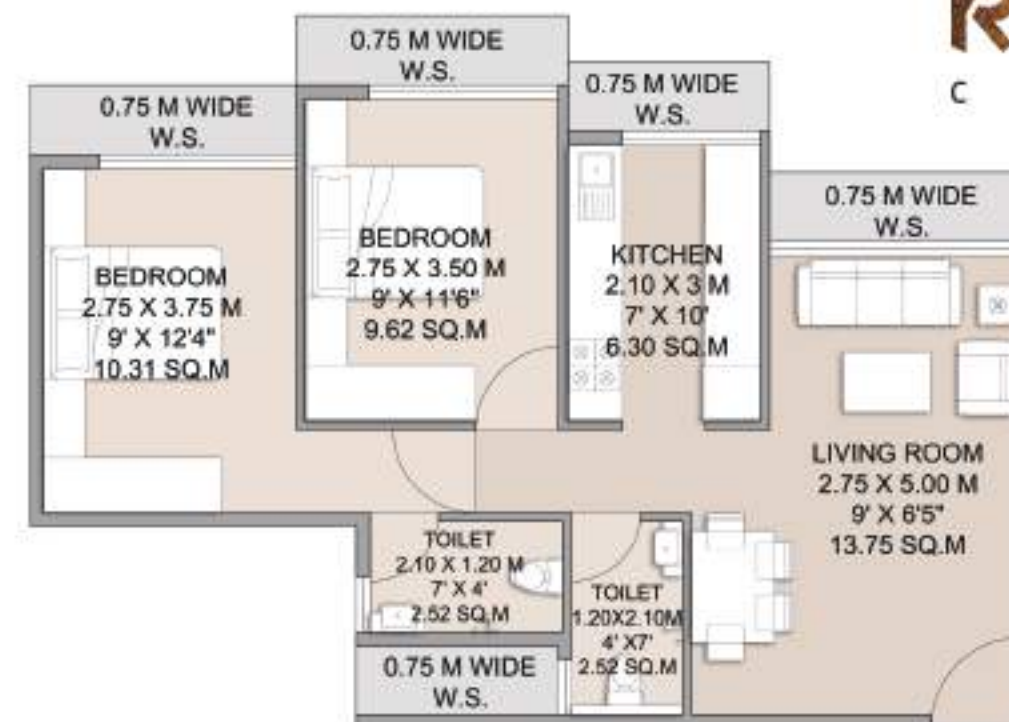




RERA CARPET AREA - 33.44 SQ.MT



1 BHK



RERA CARPET AREA - 53.63 SQ.MT



2 BHK

SWIMMING POOL

Kund

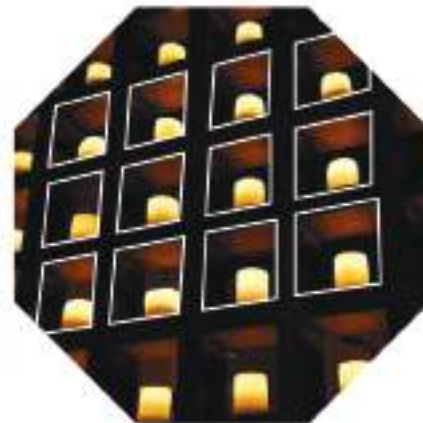
Stepping wells or ponds with a long corridor of steps that descend to the water level.



WALL OF LIGHT

Diya's on the wall

A shimmering wall of bright light appears at a point you choose within range.



WATER BODY WITH LOTUS & WATER LILIES

Padmini Talav

The plants are symbolic in ancient and modern times, celebrated for their beauty, and immortalized in art and religion.



LANDSCAPING

Palakkad

Give The Occupants A Healthy Breath, Good Appearance And Natural Beauty.



EXPERIENTIAL PATHWAY

A walk in the history

At experiential pathways we offer exclusive off-the-beaten-path, private & small group adventures.



AMPHITHEATRE

Rangamancha

An amp hitheatre is a large open area surrounded by rows of seats sloping upwards.



AMENITIES



SPECIFICATION

- All rooms have 24" X 24" vitrified flooring.
- The kitchen platform is made of granite with a stainless steel sink.
- In bathrooms, designer glazed tiles cover the beam height.
- The doors have a wooden frame and are designed for decoration purposes.
- The windows are powder-coated aluminum, sliding windows.
- The wiring is concealed copper with MCB.
- ISI modular switches and provision for cable TV are available.
- The internal walls have OBD paints, while the external walls have acrylic paints.
- Designer glazed tiles are used as a dado up to the beam level.
- The sanitary ware is branded and reputed to be made.
- Branded C.P. fittings are provided, with a provision for a geyser.
- The plumbing is concealed.
- The water storage facility includes an underground and overhead water tank with adequate storage capacity.



Site Address
At Upper Kharghar, adjoining to Taloja Metro Carshed,
Village Pisarve, Panvel 400 206
Corporate Office
Lorem ipsum dolor sit amet, consectetur adipiscing elit
+022 40160055 | info@kenicity.in | www.kenicity.in

Architect
Architect Atul Mhatre - DEVISE DESIGN, Navi Mumbai
Structural Consultant
Er. Bhausa Desai - Destech Structural Consultants, Navi Mumbai
MEP Consultant
Canscorp Engineers Pvt. Ltd., Navi Mumbai

MahaRERA Registration No : 000000000000