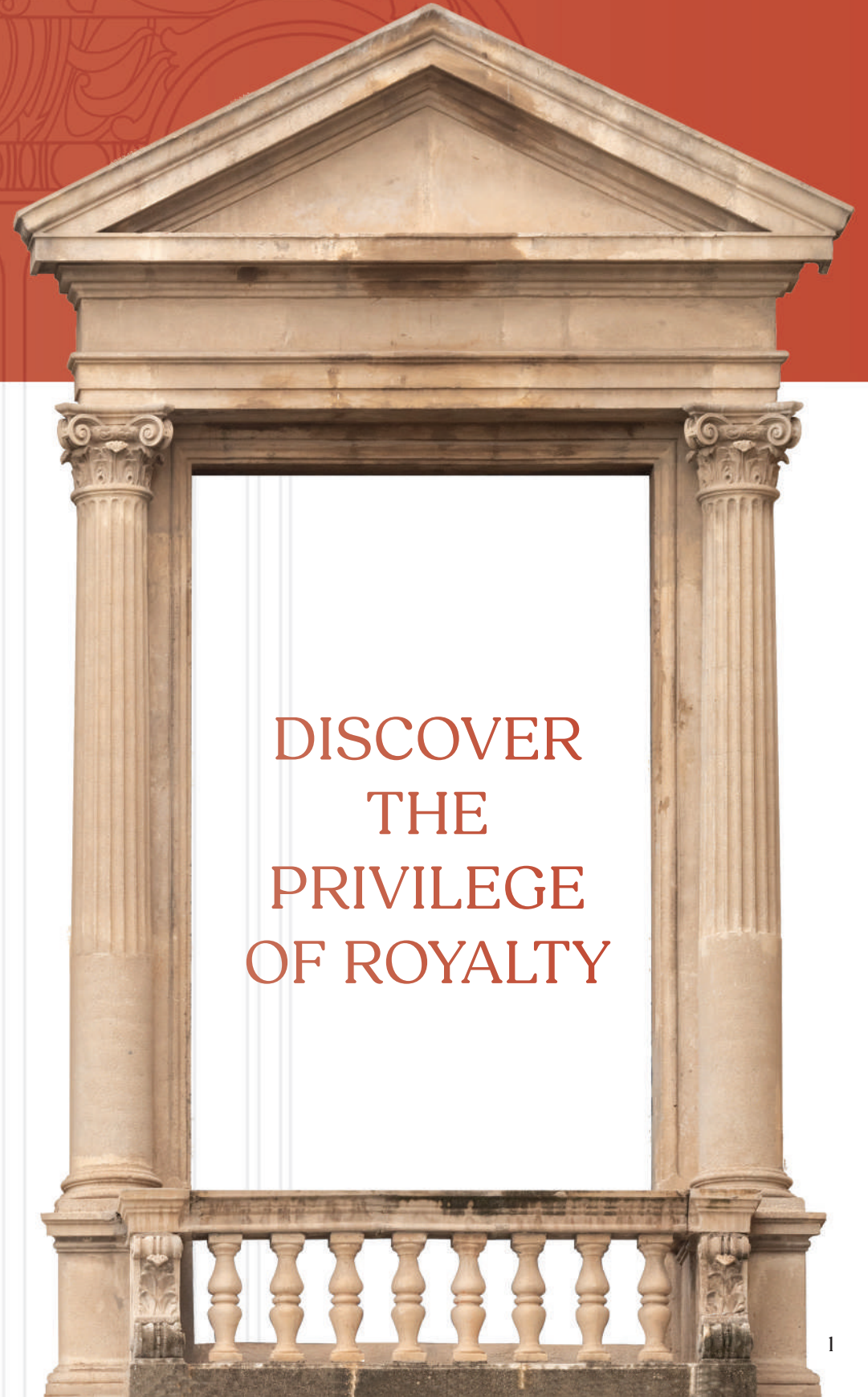




# PRESTIGE KING'S COUNTY

RISE TO ROYALTY

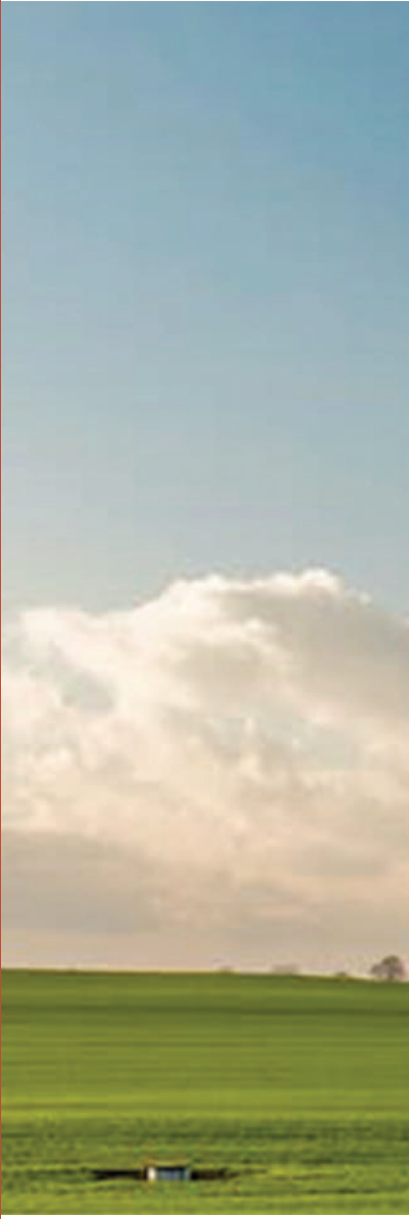
Jigani



DISCOVER  
THE  
PRIVILEGE  
OF ROYALTY



# OVERVIEW




Prestige King's County is a well-designed, infrastructure-ready plotted development community that spans 73 acres in Electronic City in South Bengaluru. Like all Prestige projects, it is designed to enable a comfortable, hassle-free and high quality of life.

As a plotted development, it offers you the twin benefits of an investment with excellent growth potential, as well as the opportunity to build a lakeside home of your own whenever you choose to.



# LOCATION



**Prestige King's County is located close to Electronic City and Jigani Industrial Area and is well connected to major parts of the city. It is close to major tech parks, as well as reputable schools, shopping centers, hospitals, and hotels.**

## HOSPITALS

1. Vijayashree Hospital
2. Athreya Hospital
3. Mazumder Shaw Hospital
4. Mithra Multispeciality Hospital
5. Apollo Hospital
6. Springleaf Hospital
7. Satya Sai Hospital
8. Fortis Hospital
9. Vydehi Hospital
10. Cloudnine Hospital
11. Uno Healthcare Services

## BUSINESS & WORKPLACES

1. Ankit Aerospace Pvt Ltd
2. Hikal
3. Schneiders Electric
4. HCL Head Office
5. Ashirvad
6. Biocon
7. Icam Solutions
8. Dell
9. Infosys
10. Wipro
11. BCM Group
12. Ambujex Technologies
13. Imcrinox Technologies
14. Bosch Manufacturing
15. Tata Advanced Systems

## SHOPPING & RETAIL DESTINATIONS

1. SM Mart
2. Just Bake
3. SM Mart
4. Max
5. Vishal Mart
6. Dmart
7. Decathlon

## EDUCATIONAL INSTITUTIONS

1. Grandeur International School
2. Triumph World School
3. Lorven PU College
4. Narayana Hrudayalaya Medical College
5. Suvidya College
6. Bishop Cotton School
7. New Cambridge International School
8. IFIM College
9. Iqra Intl School
10. MS Dhoni Global School
11. Kalaniketan College
12. Siddhanta Intellectual School
13. GVS PU College
14. Noble Institute of Education Society
15. Brightway International School
16. Oxford Public School
17. Pes Public School & University
18. AECS Magnolia Maruti Public School
19. Radcliffe Group of Schools
20. Sherwood International
21. AMC Engineering College
22. Ryan International School
23. Global International School
24. Orchids International School
25. India International School
26. Vedantha College

## RESTAURANTS & HOTELS

1. Thalassery Restaurant
2. Hotel RV International
3. Hotel Bella Vista
4. Nandhana Palace
5. Paradise Restaurant
6. Meghana Foods
7. Holiday Inn Express
8. KFC & McDonalds
9. Lemon Tree
10. The Oterra Hotel
11. Barbeque Nation

## LOCAL LANDMARKS

1. HDFC Bank
2. ICICI Bank
3. Indian Oil
4. SBI Bank
5. Shell
6. DLF Maiden Heights



# LOCATION ADVANTAGE

## CONNECTIVITY

## WORK HUBS



*Electronic City  
Anekal Junction  
Jigani  
Chandapura  
NICE Road  
Bannerghatta Road  
Kanakapura Road  
Attibele  
Sarjapur Road  
Bommanahalli  
Royal Meenakshi Mall*



*HCL  
Ashirvad  
Biocon  
Micro Labs  
Schneider Electric  
Mahindra Electric Mobility Ltd  
HIKAL Ltd  
Ankit Aerospace Pvt Ltd  
Infosys  
Wipro  
Dell  
EMC-2  
Bosch Ltd  
Bosch Manufacturing  
Toyota Industries  
Tata Advanced Systems*

## PRIME LOCATIONS

*UPCOMING BOMMASANDRA METRO STATION*

*HENNAGARA LAKE*

*APC CIRCLE*

*ELECTRONIC CITY PHASE I & PHASE II*

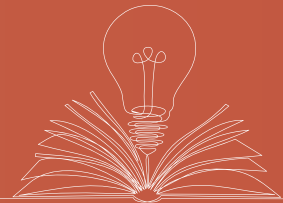
*CHENNAI EXPRESS HIGHWAY*

*MANUFACTURING HUBS*

*IT HUBS*

*BANNERGHATTA NATIONAL PARK*

## SCHOOLS & COLLEGES



*RYAN International School*  
*Global International School*  
*India International School*  
*Orchids International School*  
*Grandeur International School*  
*DPS South & East*  
*IQRA International School*  
*AMC Engineering College*  
*Christ Evening College*  
*MS Dhoni Global School*  
*Sherwood International School*  
*T.John Engineering College*  
*PES University*  
*Bishop Cotton School*  
*New Cambridge INTL School*  
*Triumph World School*  
*S-Vyasa Deemed University*  
*New Horizon College*

## HOSPITALS



*Vijayashree Hospital*  
*Narayana Hrudayalaya*  
*Apollo Hospital*  
*Vydehi Eye Hospital*  
*Narayana Health City*  
*Rakshya Multispeciality Hospital*  
*Aayush Hospital Chandapura*  
*Motherhood Hospital E-city*  
*Cloudnine Hospital E-city*  
*Neo Hospital*  
*Vikram Hospital*  
*Fortis Hospital*  
*Mithra Hospital*

## RESTAURANTS & HOTELS



*Nandhana Palace Hotel*  
*Thalassery Restaurant*  
*KFC*  
*McDonald's*  
*Domino's*  
*Burger King*  
*Mango Mist Resorts*  
*Udupi Sagar Restaurant*  
*Udupi Bhavana Restaurant*  
*Meghana Foods*  
*Paradise Restaurant*  
*Holiday Inn Express*  
*Nandini Palace*



Artist's Impression



Our aim is to maximise the appreciation potential of your plot and minimise your effort when you choose to build your home. Consequently, Prestige King's County has been designed as an infrastructure-ready community. All essential infrastructure, such as power, water and sanitation, is pre-installed, with lines drawn to every plot. The internal roads are pedestrian friendly, broad and well paved, and lined with shade trees.



# INFRASTRUCTURE



# CLIMATE AND ENVIRONMENT

Several factors combine to keep temperatures at Prestige King's County cool, and the air fresh and pleasant. The community overlooks a vast lake, and is dotted with parks, gardens and open recreational areas. An organic farm and an orchard also add to the green cover, allowing you the opportunity to get closer to nature, and, possibly, even enjoy a farm-to-table life.





Artist's Impression







# LIFESTYLE, HEALTH AND WELL-BEING

At Prestige, we care about your health and well-being. Prestige King's County is designed to facilitate an active lifestyle, with jogging and cycling tracks, an outdoor gym, a skating rink and a yoga arena. You also have a multisport court, and a climbing wall, in the outdoors, as well as a swimming pool, badminton court and a gymnasium in the clubhouse.\*

\*The ownership of the clubhouse at Prestige King's County has been retained by the Developer and is not a common facility. The site owners in the project shall be entitled to make use of these facilities on an availability basis and by paying user/usage charges as prescribed by the Developer. It shall be non-exclusive and the Developer shall be entitled to allow any persons to use the clubhouse including outsiders and non-site owners in the project.



# MASTERPLAN



# Entrance



Artist's Impression

# Typical 9m Road



Artist's Impression



# Typical 12m Road



Artist's Impression

# Amphitheatre



Artist's Impression



Artist's Impression

# Waterfront Park Roundabout



Artist's Impression



# Waterfront Park Pathway



Artist's Impression

# Climbing Wall



Artist's Impression

# Group Seating Area



Artist's Impression



# Hammock Garden



Artist's Impression

# Kids' Play Area



Artist's Impression

# Road Leading to King's Circle



Artist's Impression

# Viewing Area



Artist's Impression

# Sculpture Garden



Artist's Impression

# Walkway & Cycle Track with Roundabout



Artist's Impression

# Yoga Area



Artist's Impression

# Specifications

## **INFRASTRUCTURE ROADS AND PATHWAYS**

- Imposing entrance designed to complement the classical style of architecture with an 18m wide entrance road
- Internal roads are 12m and 9m wide with a 7m and 5.5m carriageway laid with asphalted driveways
- Landscaped avenue on either side of the road
- Each plot has a defined access finished in concrete from the approach road

## **ELECTRICAL**

- LED street lighting
- Underground conduits for fibre optic provision for data and voice
- Underground power lines to distribute power from transformer yards to individual feeder pillars
- Power to be drawn from the transformer to the feeder pillars with provision up to the plot

## **PLUMBING**

- Irrigation network for common landscape
- Underground dual water supply system through UPVC pipes to cater for domestic use and treated water for flushing purposes and landscape
- Plumbing lines terminated within the plots for water supply & sewerage underground sanitary lines connected to an STP
- OHT & UG sump of suitable capacity with adequate head/ pressure

## **SERVICES**

- Sewage treatment plant
- Water treatment plant with underground sump tank
- Organic Waste Converter

## **SAFETY AND SECURITY**

- Security cabin at main entrance
- 24/7 security with RFID boom barriers at the main entrance gate
- CCTV cameras provided at the main entrance & exit, service yards and children's play area

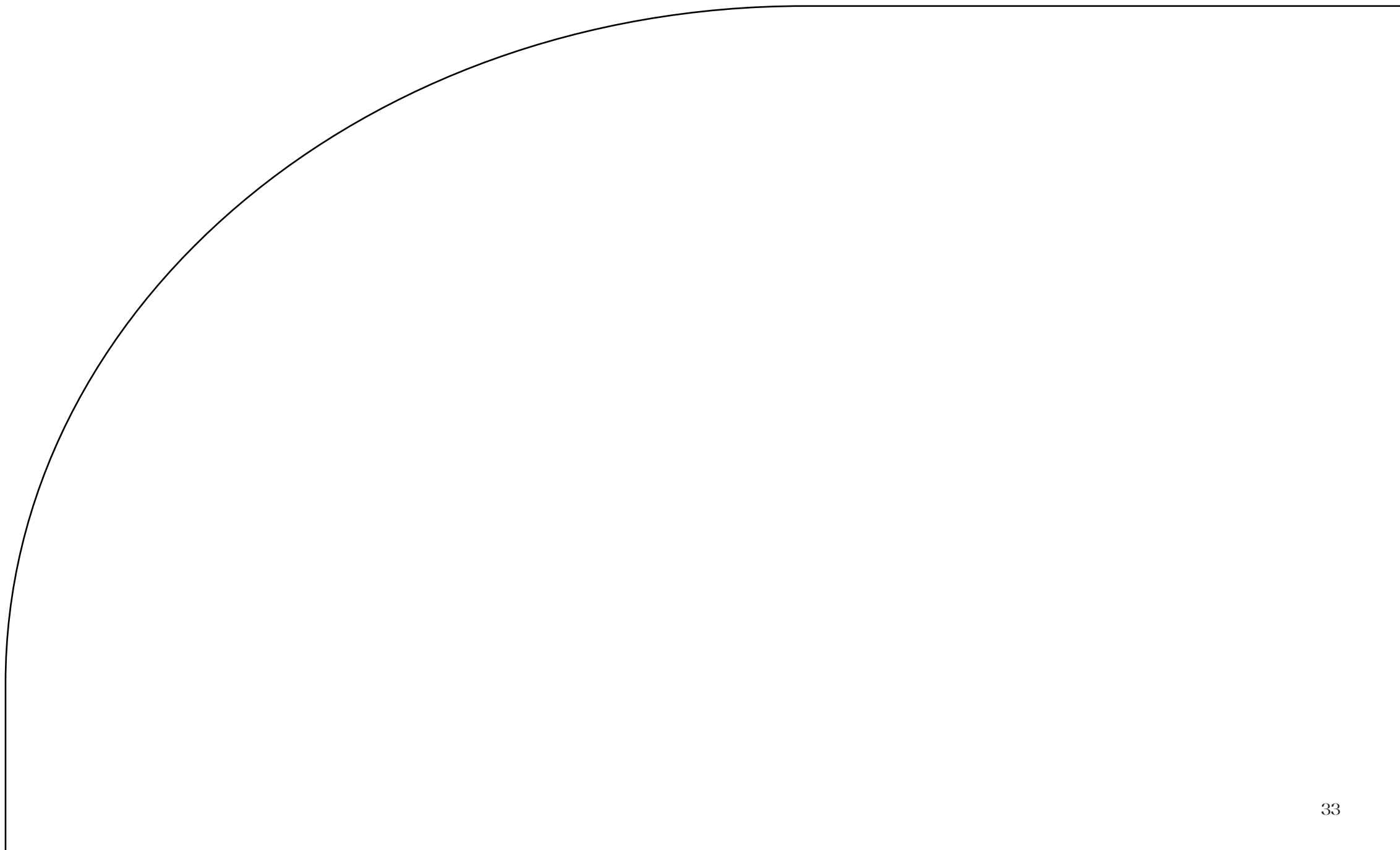
## **WATER CONSERVATION**

- Treated water, used for landscape irrigation as well as flushing purposes, provided for all plots
- Recharge pits for rainwater harvesting

## **LANDSCAPE FEATURES**

- Urban garden areas
- Avenue plantation for internal and public roads with low maintenance plants
- All landscape lights designed to enhance hardscape and softscape







• HOMES • OFFICES • SHOPPING MALLS • HOTELS • INTERIORS • WAREHOUSING •

**Bengaluru | Chennai | Goa | Hyderabad | Kerala | Mangaluru | Delhi-NCR  
Mumbai | Ahmedabad | Dubai Sales Office**

**Prestige Estates Projects Limited**

Prestige Falcon Towers, No.19, Brunton Road, Bengaluru - 560025,  
Karnataka, INDIA. Ph: +91-80-25591080.

E-mail: [properties@prestigeconstructions.com](mailto:properties@prestigeconstructions.com)  
[www.prestigeconstructions.com](http://www.prestigeconstructions.com)

International Sales Office: [dubai@prestigeconstructions.com](mailto:dubai@prestigeconstructions.com)  
Usha: +971 50 212 3138

**Prestige King's County**  
Jigani, Karnataka 560105



This brochure is conceptual and has been prepared based on the inputs provided by the Project Architect. This may vary during execution. The Promoter reserves the right to change, alter, add or delete any of the specifications mentioned herein based on site conditions and construction exigencies without prior permission or notice. The external color schemes and detailing of landscape may vary as may be suggested by the Architect considering the site conditions.

