

SiliconeNEST
where family comes together

2 BHK ELEGANT FLATS

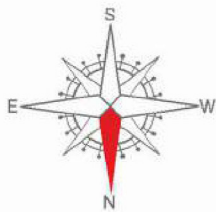


SiliconeNEST
where family comes together

**A PLACE
THAT
CELEBRATES
LIFE...**

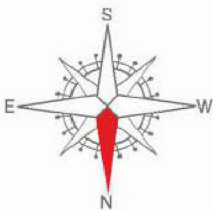


GROUND FLOOR PLAN



12.00 M WIDE T.P. ROAD

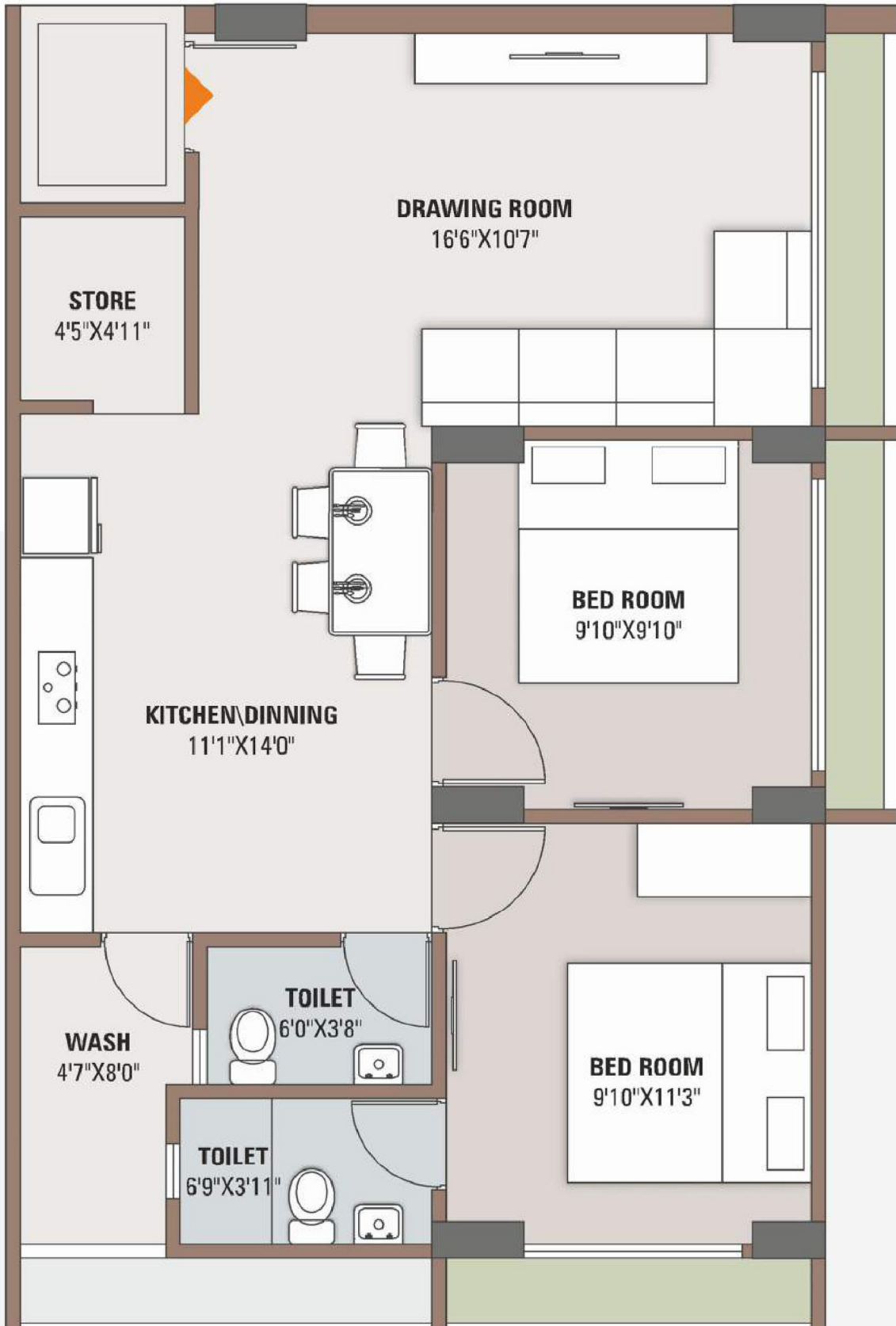
TYPICAL FLOOR PLAN



12.00 M WIDE T.P. ROAD

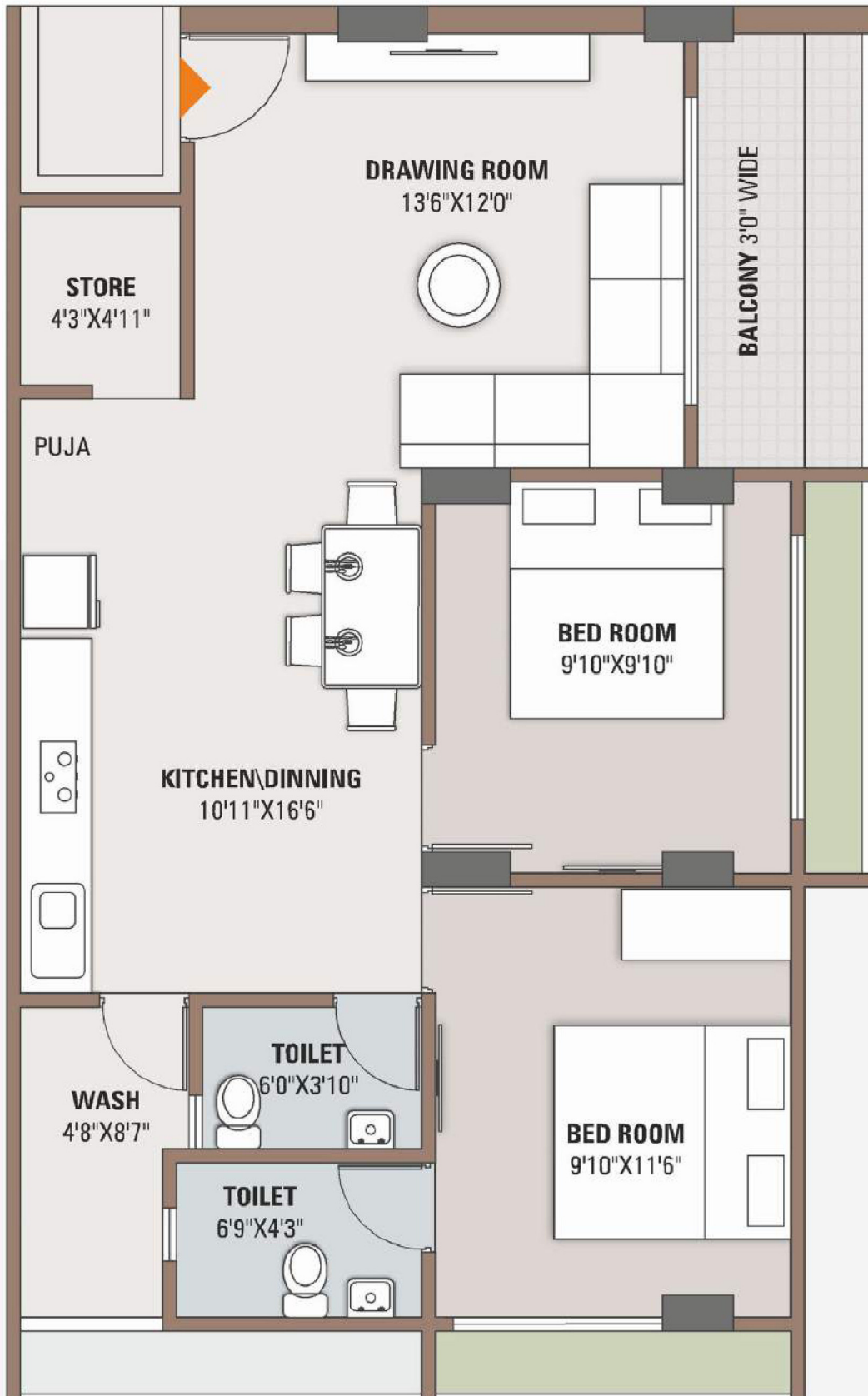
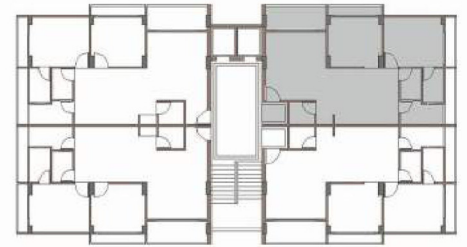
BLOCK - A | B
UNIT PLAN

2 BHK



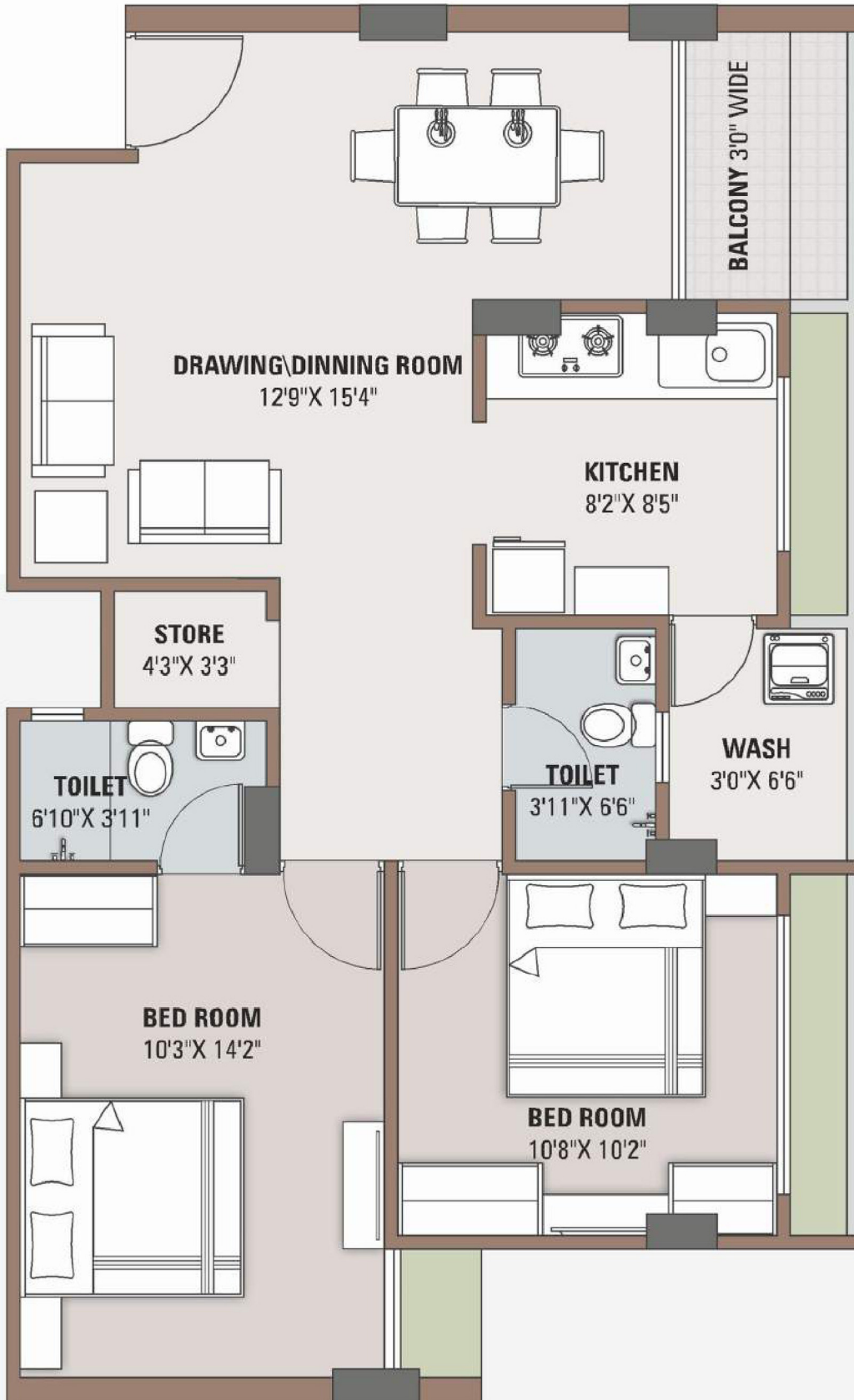
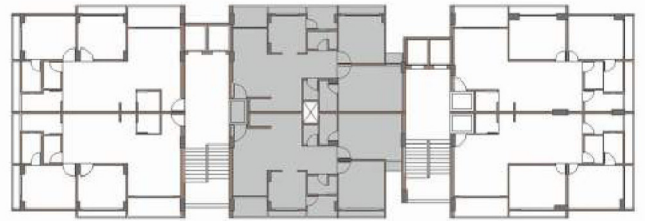
BLOCK - C
UNIT PLAN

2 BHK



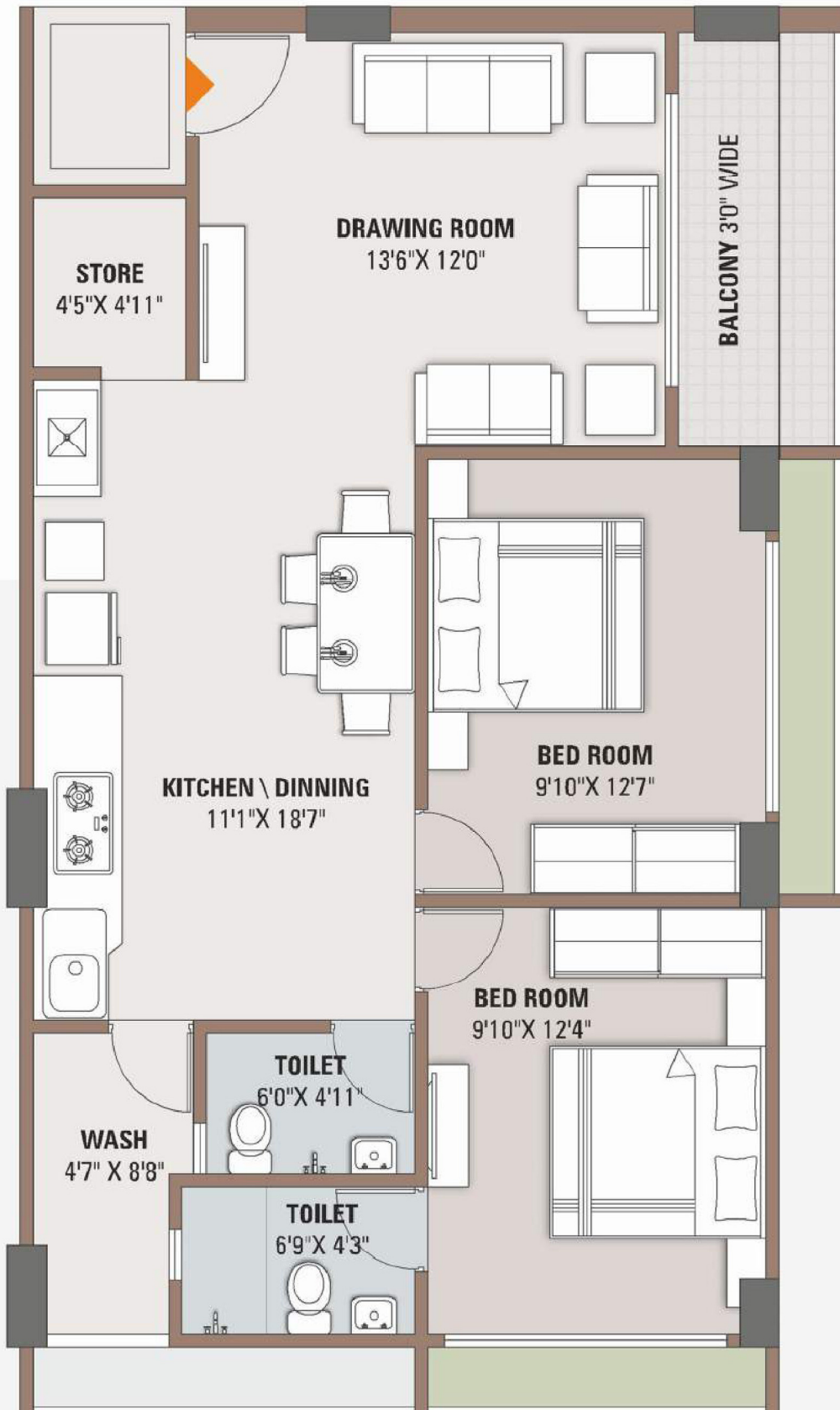
BLOCK - D
UNIT PLAN

2 BHK



BLOCK - D
UNIT PLAN

2 BHK



Specifications



STRUCTURE

R.C.C Earthquake resistance frame structure.



WALL & PLASTER

Light Weight Block, internal mala plaster with birla wall care putty finished.
External double coat sand face plaster



FLOORING

Premium quality vitrified tiles flooring in all rooms.



TOILET & PLUMBING

Designer glazed tiles Dado up to lintel level with premium quality bath fitting ,
Pipe fittings and sanitary wares.



KITCHEN

Granite platform with Dado of designer glaze tiles up to lintel level with S.S.sink.

AMENITIES

- Multipurpose Hall
- 24/7 CCTV surveillance
- Automatic Lifts

RULES AND REGULATION

- Stamp Duty, Registration Charges, Legal documentation charges, Service Tax, GUDA Charges including cable & Sub-station cost shall be borne by purchaser/allottee.
- Any additional charge or duties levied by the Government / Local authorities during or after the completion of the scheme will be borne by the purchaser/allottee.
- In the interest of continues developments in design & quality of construction, the Developer reserve all rights to make any changes in the scheme including technical specifications, designs, planing, layout and all purchasers shall abide by such changes.
- Changes / alteration of any nature including the elevations, Exterior color scheme or any other change affecting the overall design concept & outlook to the scheme are strictly NOT PERMITTED during or after the completion of the scheme.
- Membership of member will be cancelled automatically who will be make payment in-time and deposited amount will be refunded only after new booking with 10% deduction of unit cost as an administration charges.
- This brochure is interned only for easy display and information of the scheme does not form part of legal document.

