



 शिवाश  
GLORIOUS

4 BHK SUPER LUXURIOUS LIVING

## SPECIFICATIONS

### STRUCTURE

R. C. C. frame Structure. Structure design as per IS code.  
Considering earthquake resistance.

### WALL

All internal walls will be finished with putty over mala plaster.  
All external wall will be finished with double coat mala Plaster with texture finish.

### PLUMBING

Concealed plumbing with premium quality pipes and fittings.  
For continuous water supply, a common borewell.

### FLOORING

Premium quality designer vitrified tiles in drawing room dining area with kitchen and all bedroom area. Hollow Plinth Area-paved With Designer Tiles / Blocks Or Natural Stone

### TOILETS

Full covered elegantly designed toilets with designer tiles and colour coordinated sanitary ware.

### ELECTRICAL

Concealed copper wiring with adequate number of electrical points & branded modular switches. TV point in drawing room & TV & AC Points in bedrooms.

### KITCHEN

Ready to use granite finished platform with SS sink, Designer glazed tiles with dado up to beam level.

Plumbing and electrical provisions for water purifier & washing Machine, Kota stones self in store room.

### DOORS

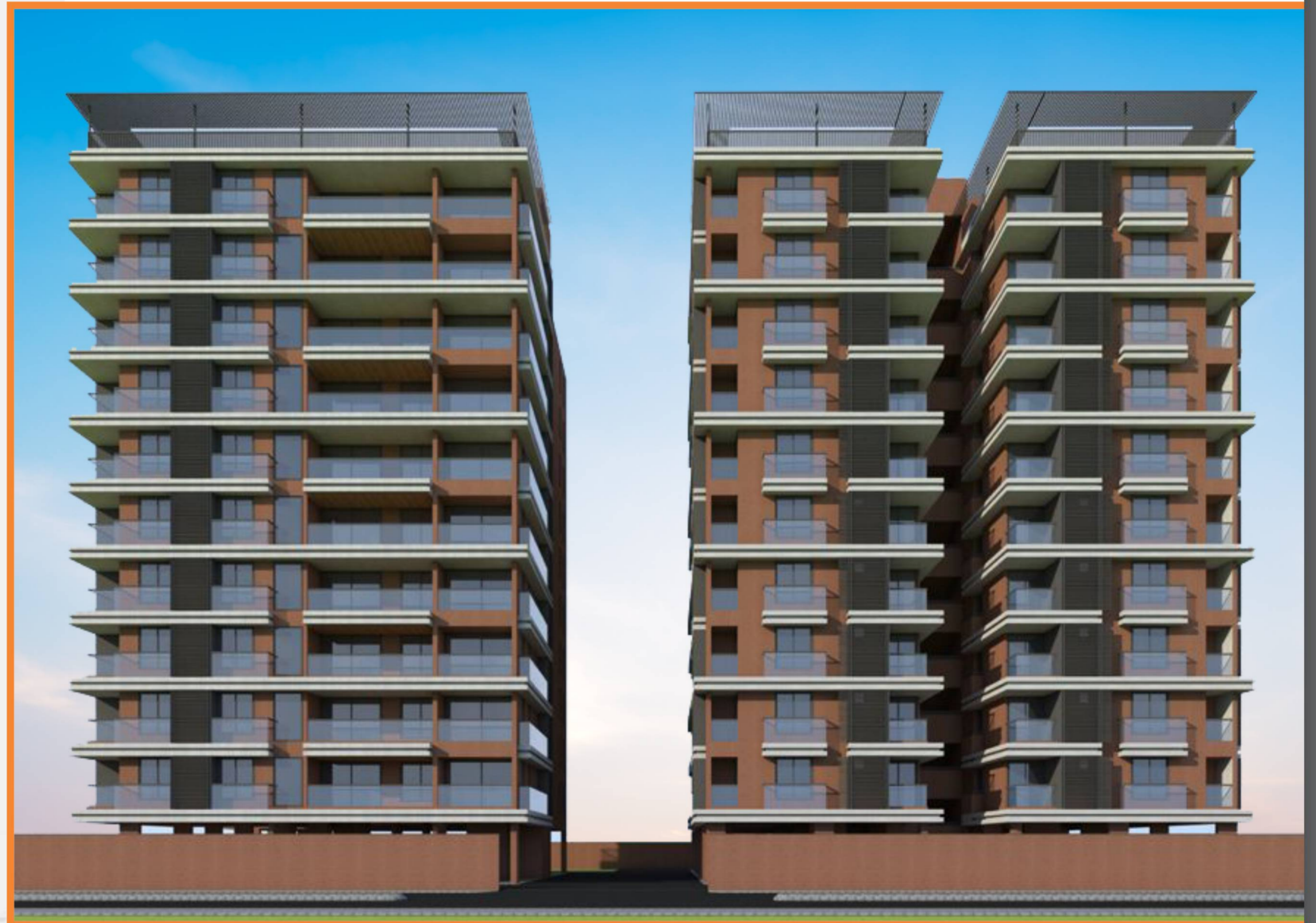
Decorative wooden polished main entrance door with brass fitting and fixtures.

### WINDOWS

All other doors are flush doors. Fully/Galzed aluminum Windows with stone revile.

### TERRACE

Open terrace finished with suitable water proofing with China - mosaic flooring for heat reflection.



N  
**GROUND**  
 FLOOR PLAN



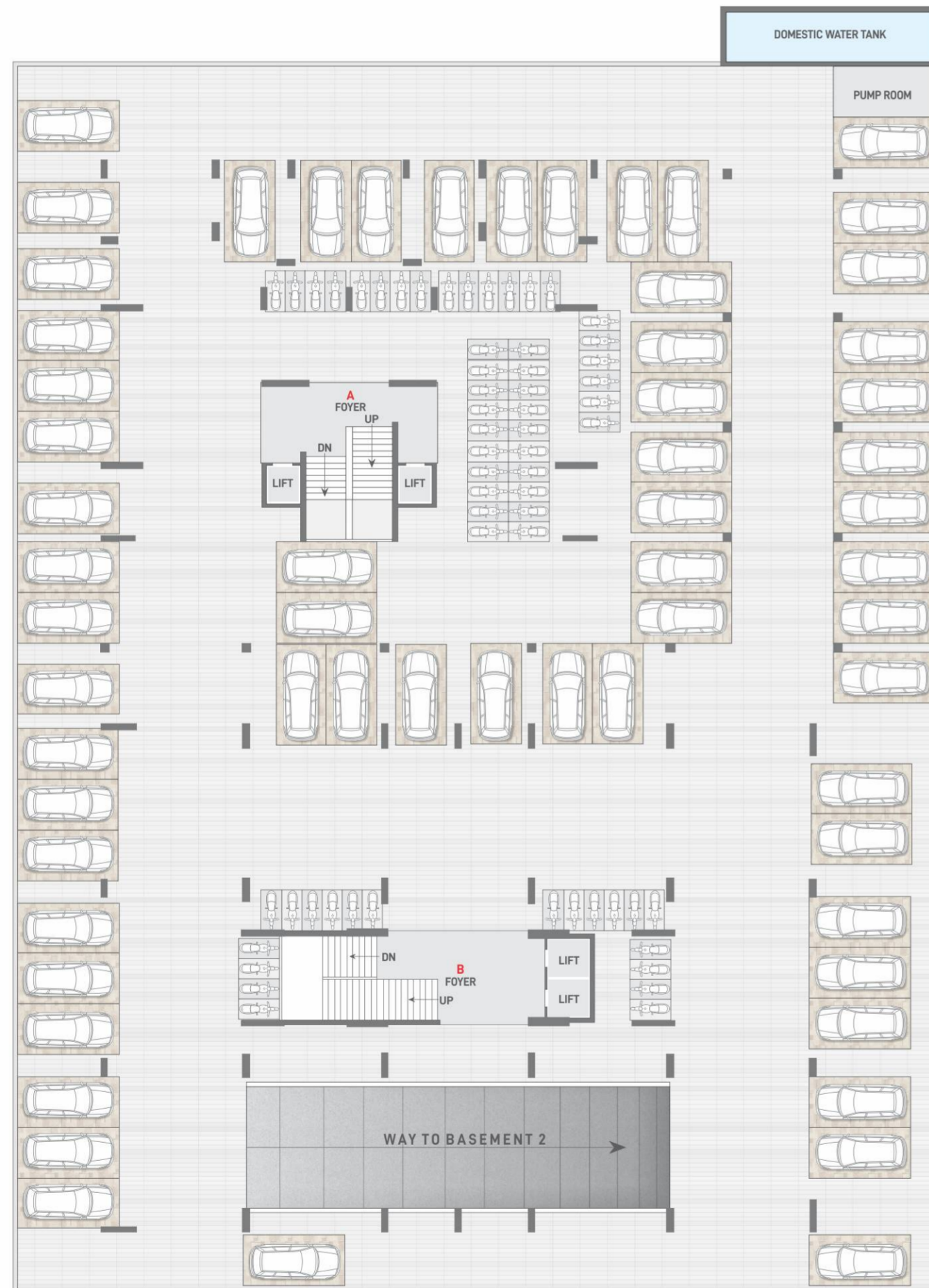
N  
**TYPICAL**  
 FLOOR PLAN

**शिवाश**  
**GLORIOUS**

4 BHK SUPER LUXURIOUS LIVING



**FIRST**  
BASEMENT PLAN



**SECOND**  
BASEMENT PLAN



**4** BHK  
UNIT FLOOR PLAN  
TYPE - B



**BLOCK - A**  
101 TO 1001  
102 TO 1002



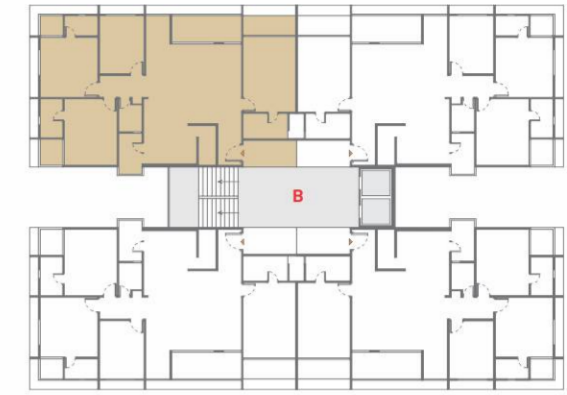


4 BHK SUPER LUXURIOUS LIVING

**4** BHK  
UNIT FLOOR PLAN  
TYPE - B

**BLOCK - B**

101 TO 1001  
102 TO 1002  
103 TO 1003  
104 TO 1004



## DIRECTION MAP



## DEVELOPERS GLORIOUS

Survey No. 184/1,F.P- 103, Nr. Darsh Pavitram, K Raheja Road, Gandhinagar, Gujarat-382421

For more details : **+91 9327815081**

RERA REG. NO. :

Web : [www.gujrera.gujarat.gov.in](http://www.gujrera.gujarat.gov.in)

### ARCHITECT

**Spline Design**  
ARCHITECTS & INTERIOR DESIGNERS

### STRUCTURE

**912 consultants**  
Rajan Patel  
Mob: -9909288947

**PLEASE NOTES :** Stamp Duty, Registration Charges, Legal Charges, GST, GUDA Charges & Ele. Co. Charges for Cable and sub-station Cost etc shall be borne by the purchaser • Any additional charges or duties levied by the Government / Local authorities during or after the completion of the project will be born by the purchaser • Changes / Alternation of any nature including the elevation, Exterior colour scheme of the building or any other change affecting the overall design concept and outlook of the project strictly NOT PERMITTED during or after the completion of the project • Membership of member will be cancelled automatically who will be unable to make payment in-time and deposited amount will be refunded only after new booking with 20% deduction of unit cost as an administration charges • This brochure is intended only for easy display and information of the scheme only .