



THE WILLOWS , BESIDE THE WILLOWS FLATS  
OPP. DEV KRUPA DIVINE  
BALESHWAR HOME ROAD, B/H VIVA FARM  
HATHIJAN, AHMEDABAD 382445

☎ 9099 770 600 / 800

✉ [inquiryatthewillows@gmail.com](mailto:inquiryatthewillows@gmail.com)

PROJECT BY



**M Savaliya**  
A NAME YOU CAN TRUST



RERA : PR/GJ/AHMEDABAD/AHMEDABAD CITY/AUDA/RAA10326/170622/WWW.GUJRERAR1.GUJARAT.GOV.IN

# THE WILLOWS

4 BHK THE GLORIOUS *life*



# A GROWING WHOLESOME lifestyle

Welcome to the growing wholesome lifestyle. A masterpiece of happiness and planning, because living comes with sweetness and laughter. The Willow is an elegant, majestic and a grandiose creation crafted to perfection. Radiating its splendor for and wide, The Willow is a masterpiece you will easily relate with. A thing of exquisite beauty The Willow is truly a joy forever. This embodiment of pristine flamboyance, invites the connoisseurs of beautiful living to live a reality that's more beautiful than the most beautiful dream.







the essence of

*design*

Always be about people where they live. It is about the realities of what makes for an attractive and meaningful environment. The details are not the details, they make the life meaningful to live beyond everything.

THE  
WILLOWS





embrace the greatest *happiness*

The entrance of The Willow is just the beginning to the majestic lifestyle that thrives inside. It sets the ball rolling for an out of the world experience offered by The Willow.







A PERFECT *harmony*



THE  
WILLOWS





THE  
WILLOWS

Live a grand life with easy  
*connectivity*



# the layout plan



# the amenities

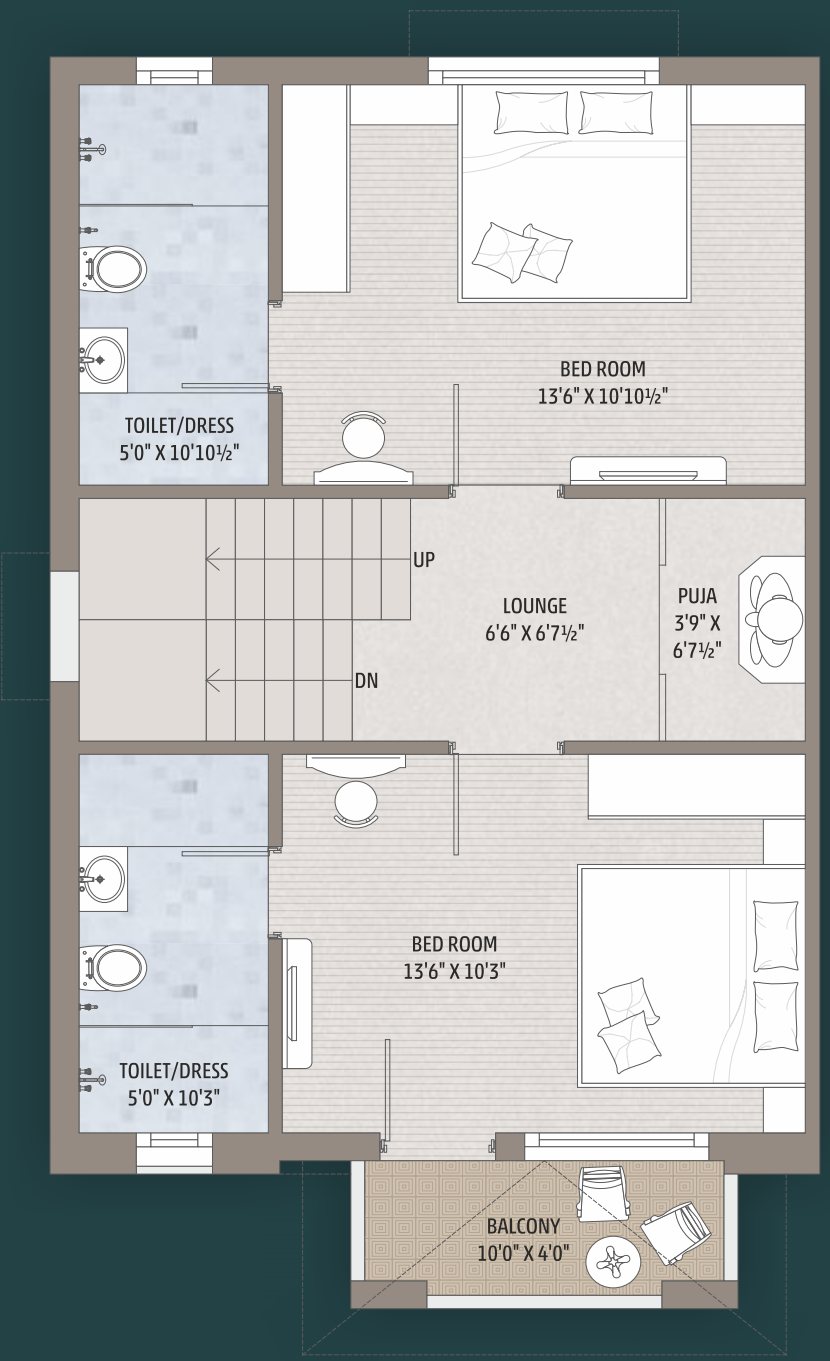
- GYM
- YOGA ZONE
- LIBRARY
- GAZEBO
- FOUNTAIN
- JOGGING TRACK
- KIDS PLAY AREA
- INDOOR GAMES
- CLASS ELEVATION
- GARDEN
- PICKUP-DROP OFF ZONE
- MAXIMUM GARDEN FACING BUNGALOWS
- SENIOR CITIZEN SEAT OUT
- SOLAR WATER HEATER
- BOOM BARRIER ENTRY
- 24 X 7 SECURITY
- 30 FT. MAIN ENTRY
- CCTV SURVEILLANCE
- 24 HR WATER SUPPLY
- SECURITY CABIN
- NEWSPAPER SECTION
- TEMPLE



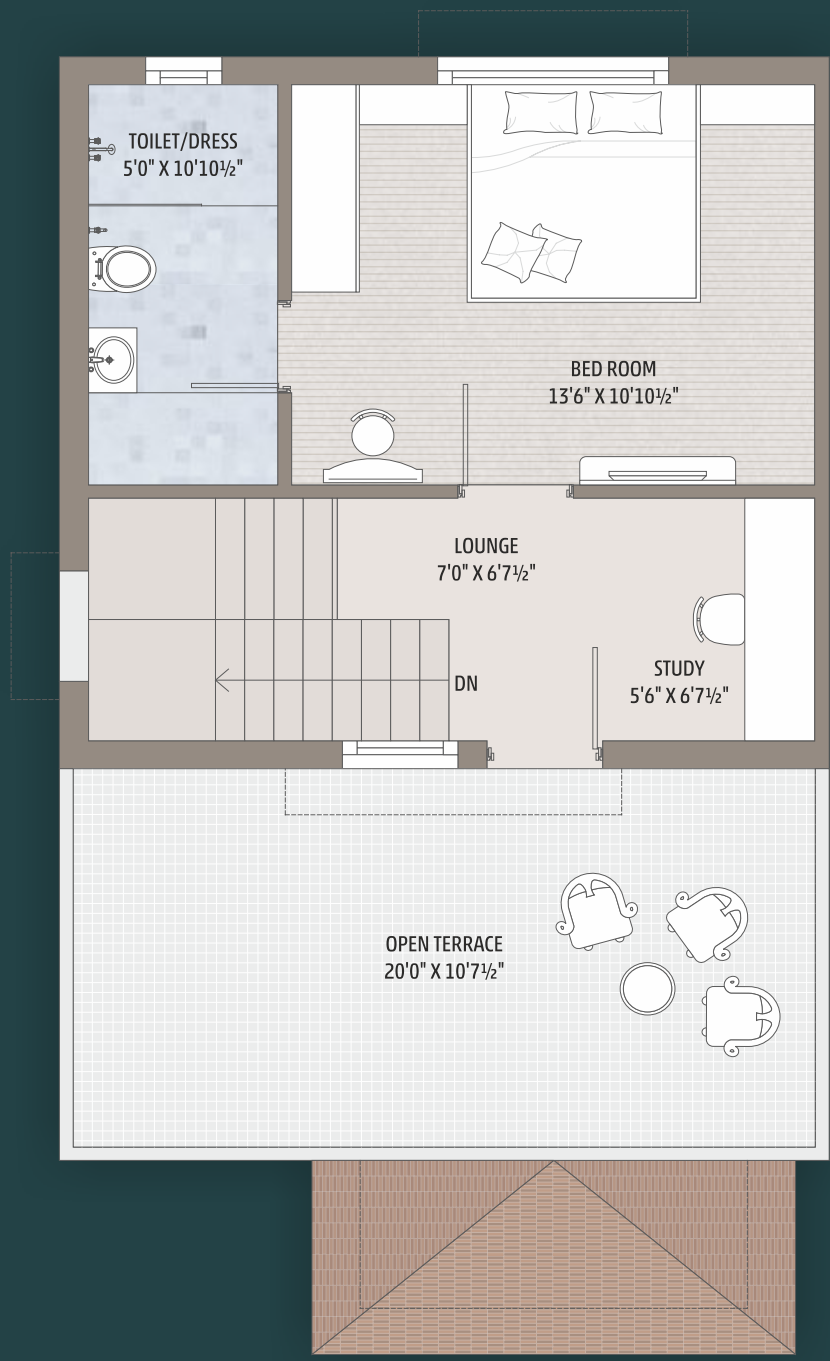




GROUND FLOOR



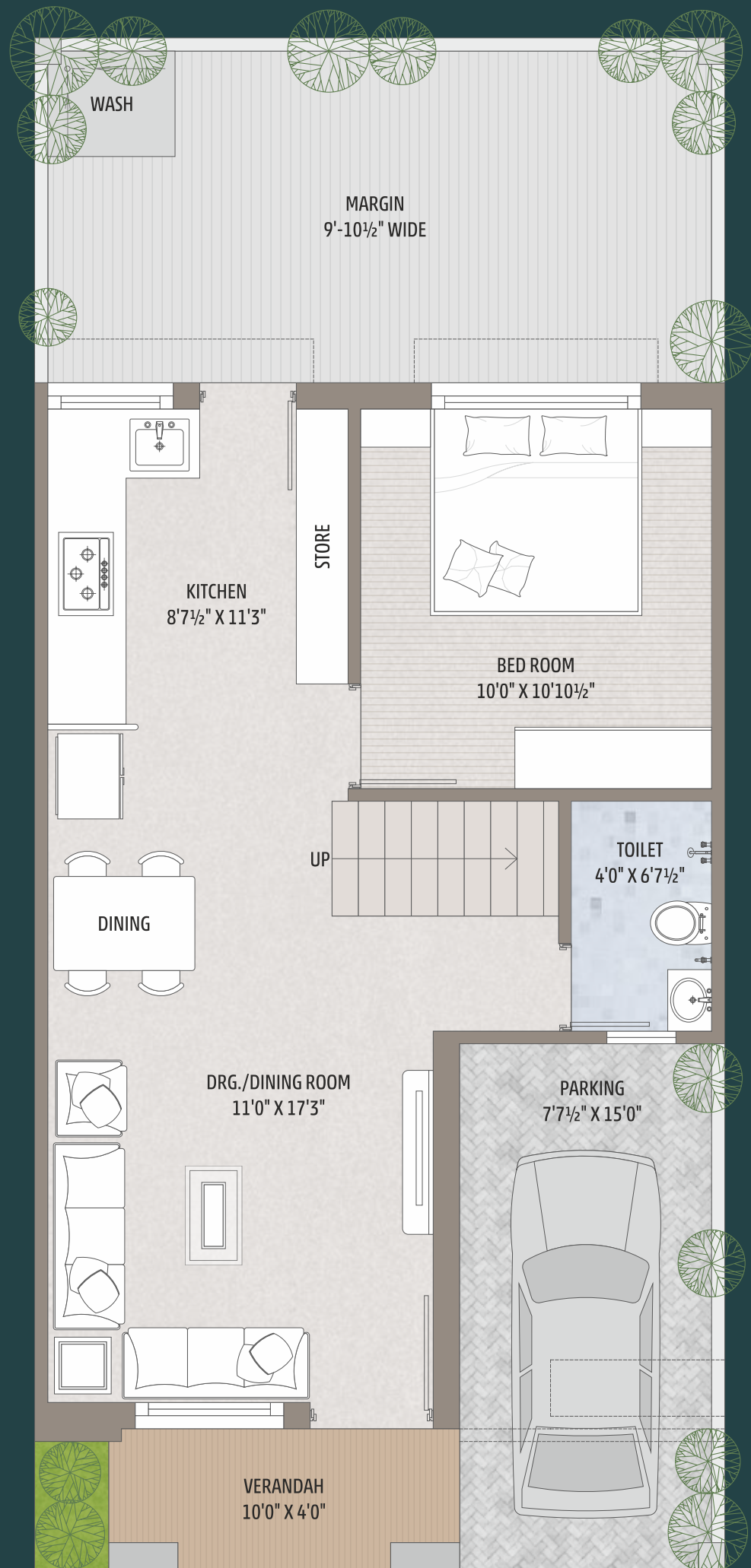
FIRST FLOOR



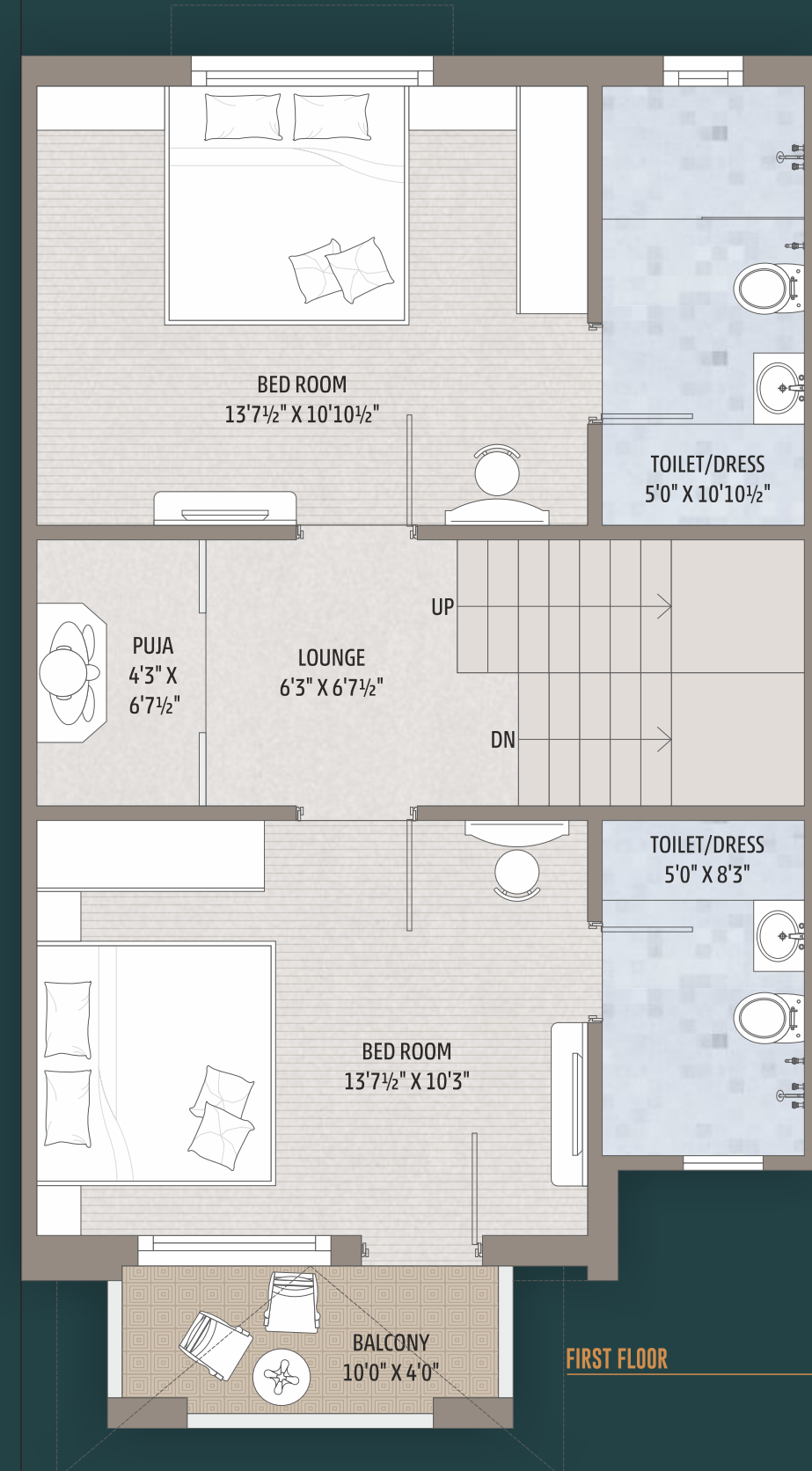
SECOND FLOOR



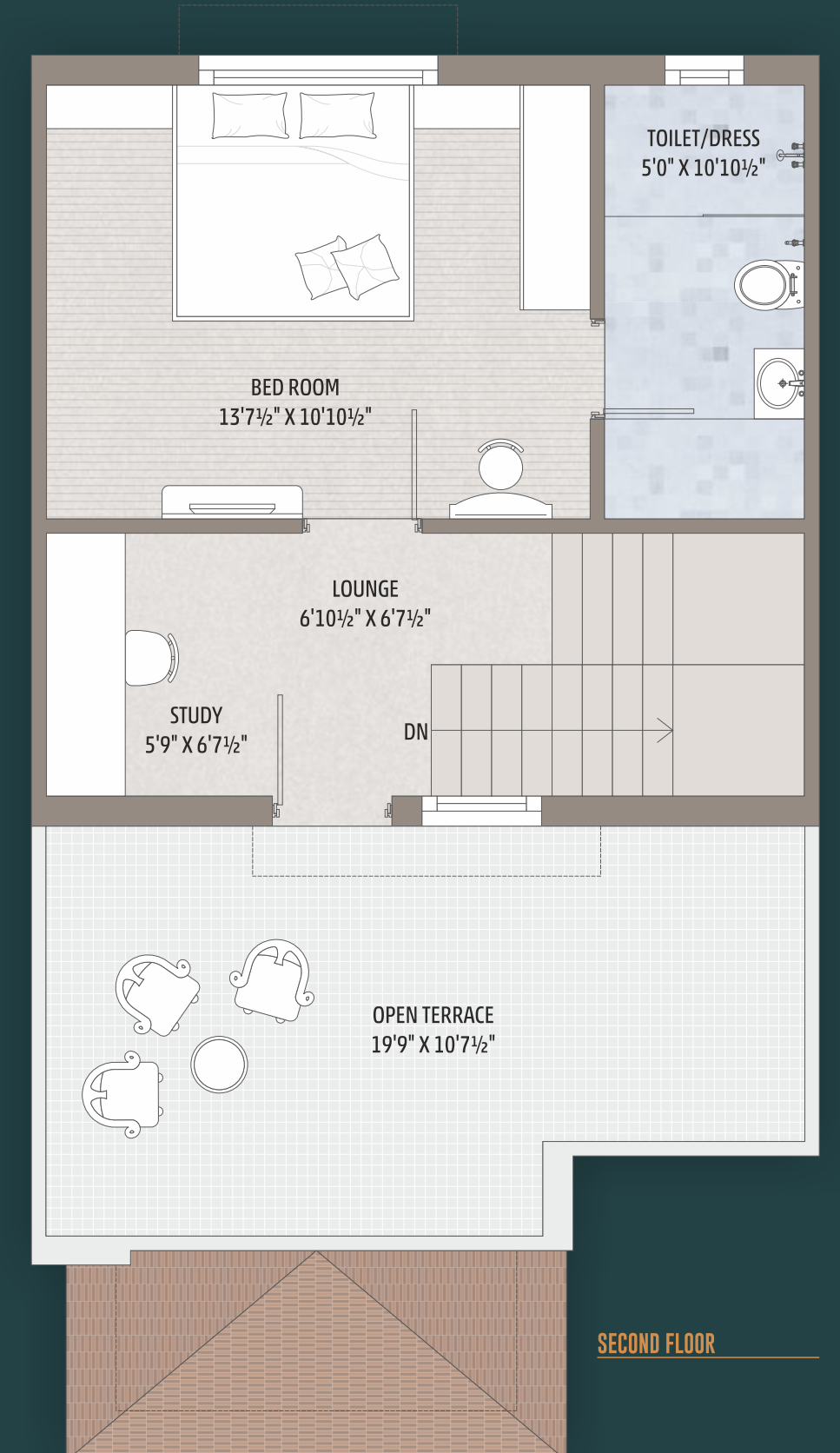
*the unit - 02 to 12, 15 to 25, 27 to 30, 33 to 45*



GROUND FLOOR



FIRST FLOOR



SECOND FLOOR





GROUND FLOOR



FIRST FLOOR

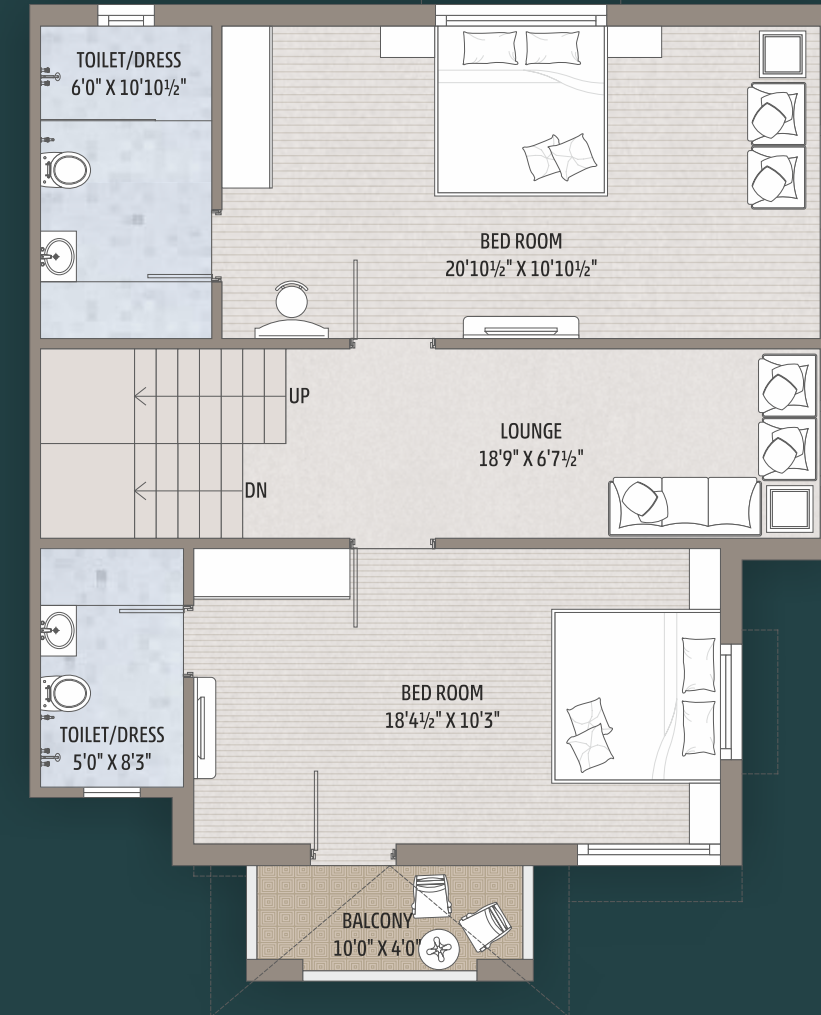


SECOND FLOOR

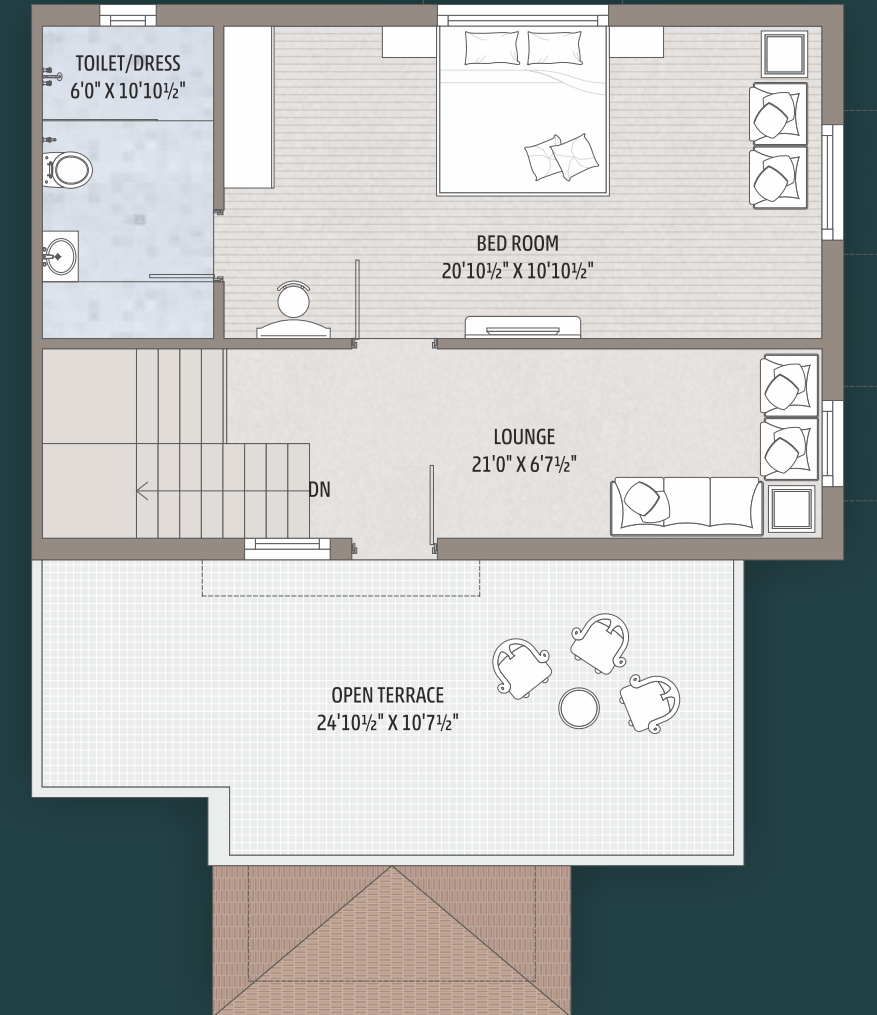




GROUND FLOOR



FIRST FLOOR



SECOND FLOOR





GROUND FLOOR



FIRST FLOOR

SECOND FLOOR





## the specification

### STRUCTURE

- Earthquake resistant R.C.C. frame structure

### FLOORING

- Vitrified tiles in all bedrooms, kitchen, living and dining area
- Ceramic tiles in all bathrooms

### KITCHEN

- Polished natural granite platforms
- Stainless steel kitchen sink
- Glazed ceramic tile dado up to the lintel level on walls above the platform

### WALL FINISH

- Interior walls are plastered and putty finished
- Exterior walls are painted with acrylic based paint

### ELECTRIFICATION

- Concealed PVC conduits with PVC insulated ISI grade copper wiring
- Adequate points for lighting and power
- Decorative modular switches with MCB distribution board

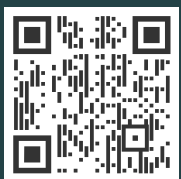
### DOORS & WINDOWS

- Decorative main door with wooden framing
- Flush doors with quranic framing in all bedrooms and bathrooms
- Powder coated/Anodized aluminum sliding windows with stone jambs

### BATHROOMS / TOILETS

- Glazed ceramic tile dado on the walls up to the lintel level
- Good quality sanitary ware and plumbing fixtures

## the location



SCAN FOR LOCATION