

A PROJECT BY
PARMESHWAR
GROUP

DEVELOPER
OMKAR
INFRA

Site Address : Aurum Valley
Block No. 1011, Nr. Logaras Jain Derasar,
B/h. Royal Vaibhav Homes, Adalaj, Gandhinagar - 382 421.

For more information
63550 91016

Email : omkarinfra818@gmail.com

RERA REGI. NO. : PR/GJ/GANDHINAGAR/GANDHINAGAR/0thers/RAA09281/031121
www.gujrera.gujarat.gov.in

**AURUM**
VALLEY



Let's begin a
GREEN LIVING

4 BHK LUXURIOUS BUNGALOWS



PRESENTING

Aurum Valley 4BHK Luxurious Bungalows is a prestigious project of Parmeshwar Group for those who desire a luxury lifestyle. Aurum Valley located is situated at the reposeful location of Adalaj. Modern architecture, spacious living, contemporary facilities and most importantly, a green environment make Aurum Valley home to all luxury-seeking and comfort-yearning people.

A project by

PARMESHWAR
GROUP



Let's create a

JOYFUL FUTURE

The world of Aurum Valley is built with modish architecture, intriguing details, nature's glory and rich amenities. It is well connected with Ahmedabad and nearby towns with convenient roadways, entertainment hubs and education centres.

A WONDERLAND
BLESSED WITH NATURE

Let's welcome a
GRAND LIVING

The feeling of luxury gets real when you enter the gates of Aurum Valley. It is a safe, secure and serene environment for everybody in the family to thrive and embrace happiness.





Let's relive a
**PLAYFUL
 CHILDHOOD**



SECURITY CABIN
 AT ENTRANCE



SENIOR CITIZEN
 LOUNGE



CHILDREN
 PLAY AREA



Let's have a
RICHER LIFESTYLE



ELEGANT
 ENTRANCE GATE



24 x 7
 SECURITY



24 x 7 CAMERA
 SURVEILLANCE

Let's experience a
GREEN ENVIRONMENT

Natural sunlight, open and green spaces with trees and flowering plants, and the free flow of breeze makes living in Aurum Valley a heavenly experience.





LANDSCAPE
GARDEN



SUFFICIENT
PARKING



LANDSCAPE
SIT-OUT

Let's enjoy a
**FULL-SCALE
FACILITY**



Let's achieve a
HEAVENLY DREAM

The dream of having a luxurious
bungalow with a green view and your
own parking space comes true.


AURUM
VALLEY

Let's have a
GREAT TIME

 MULTI PURPOSE HALL

 OPEN GREEN GYMNASIUM

 GYM

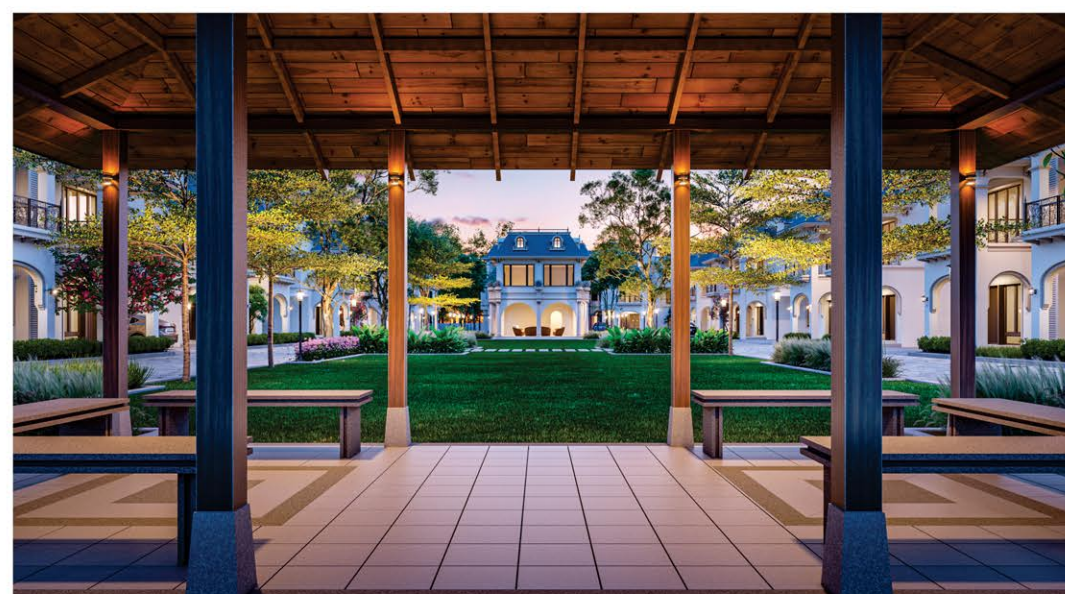
 JOGGING TRACK

 GAZEBO

 WATER BODY

 YOGA/MEDITATION SPACE

 24 x 7 WATER SUPPLY

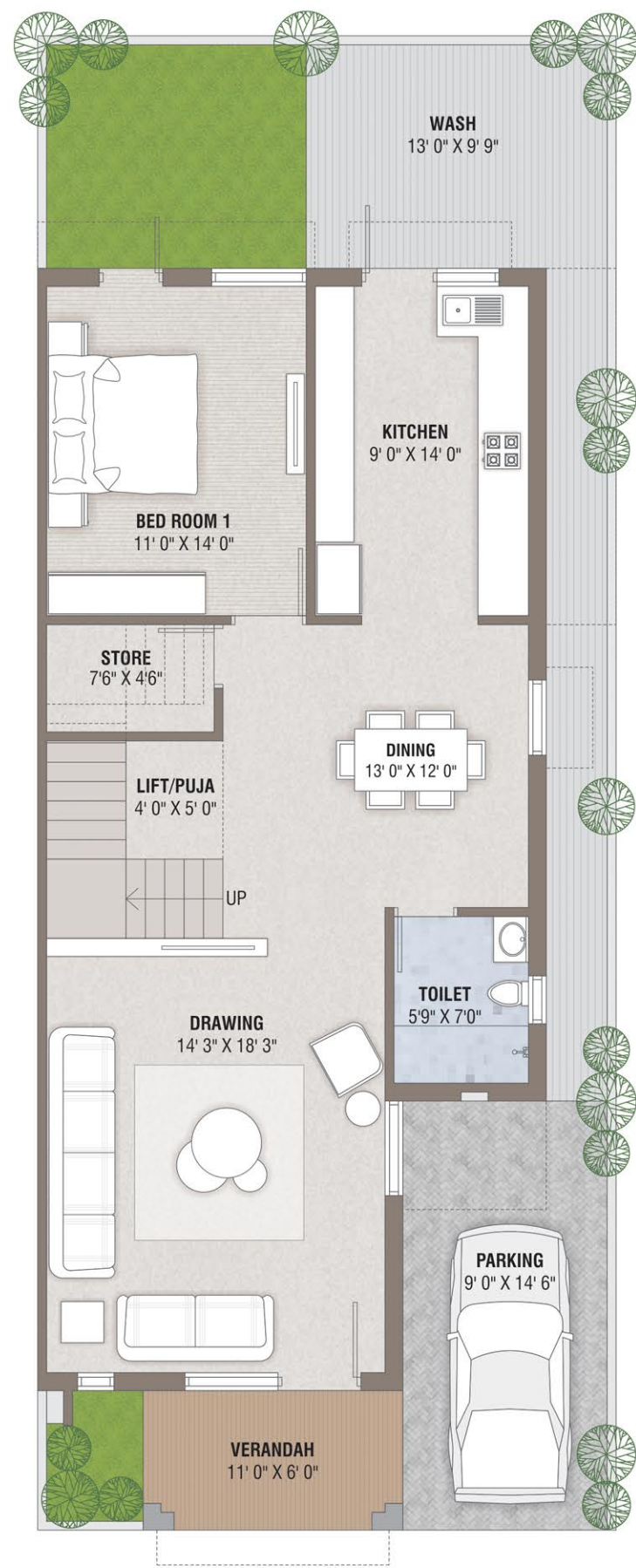


LAYOUT PLAN

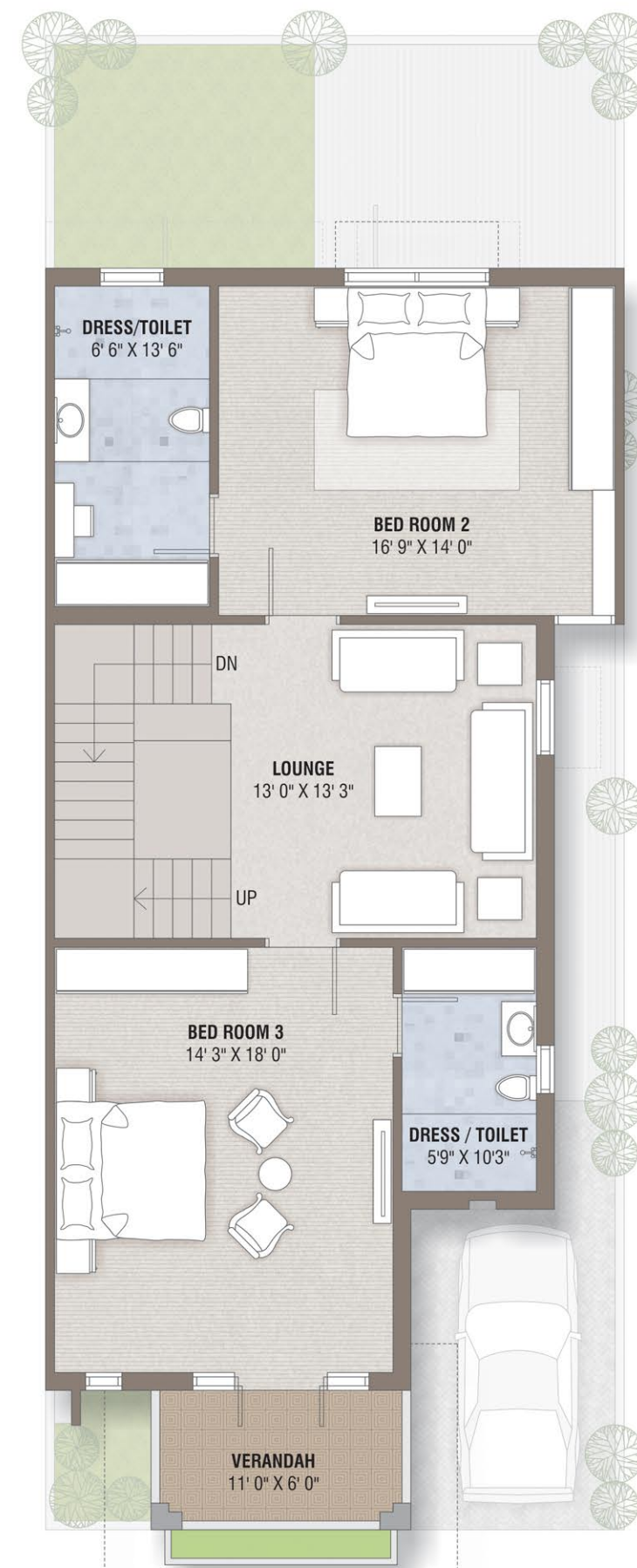




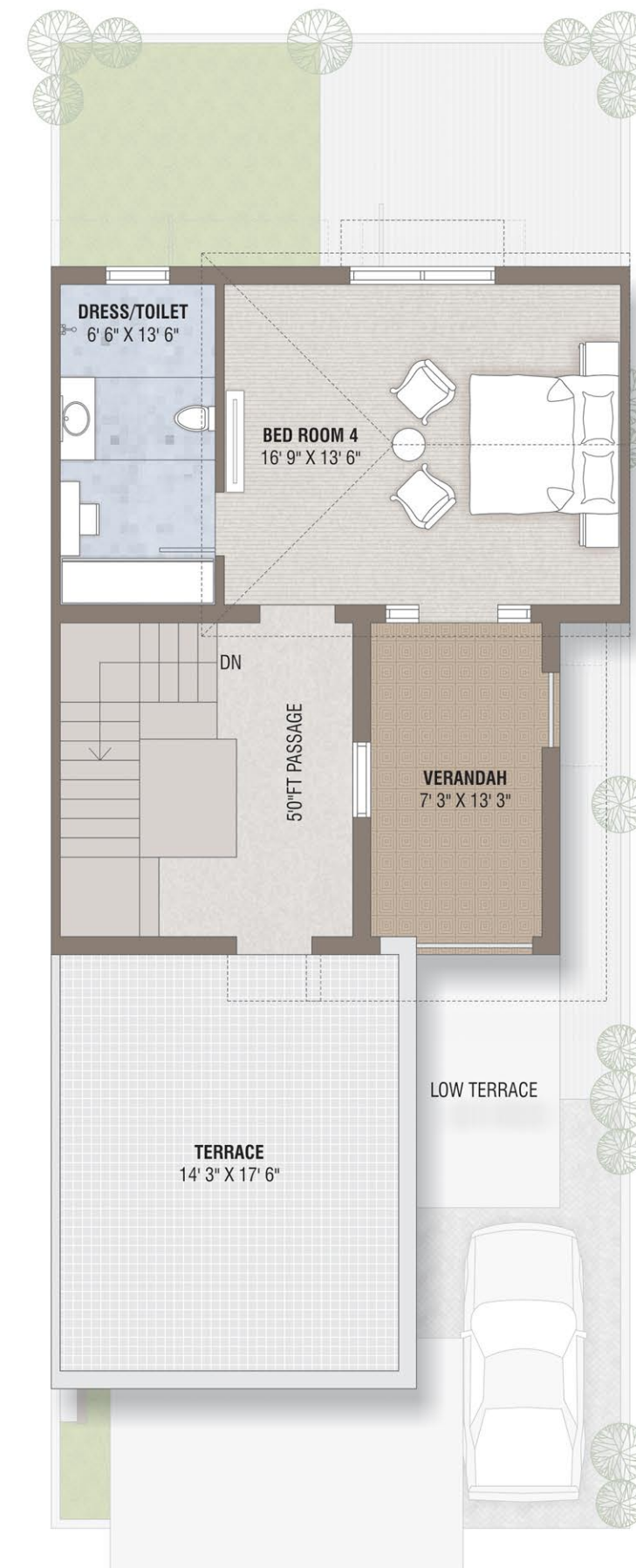
T Y P E
A



GROUND FLOOR



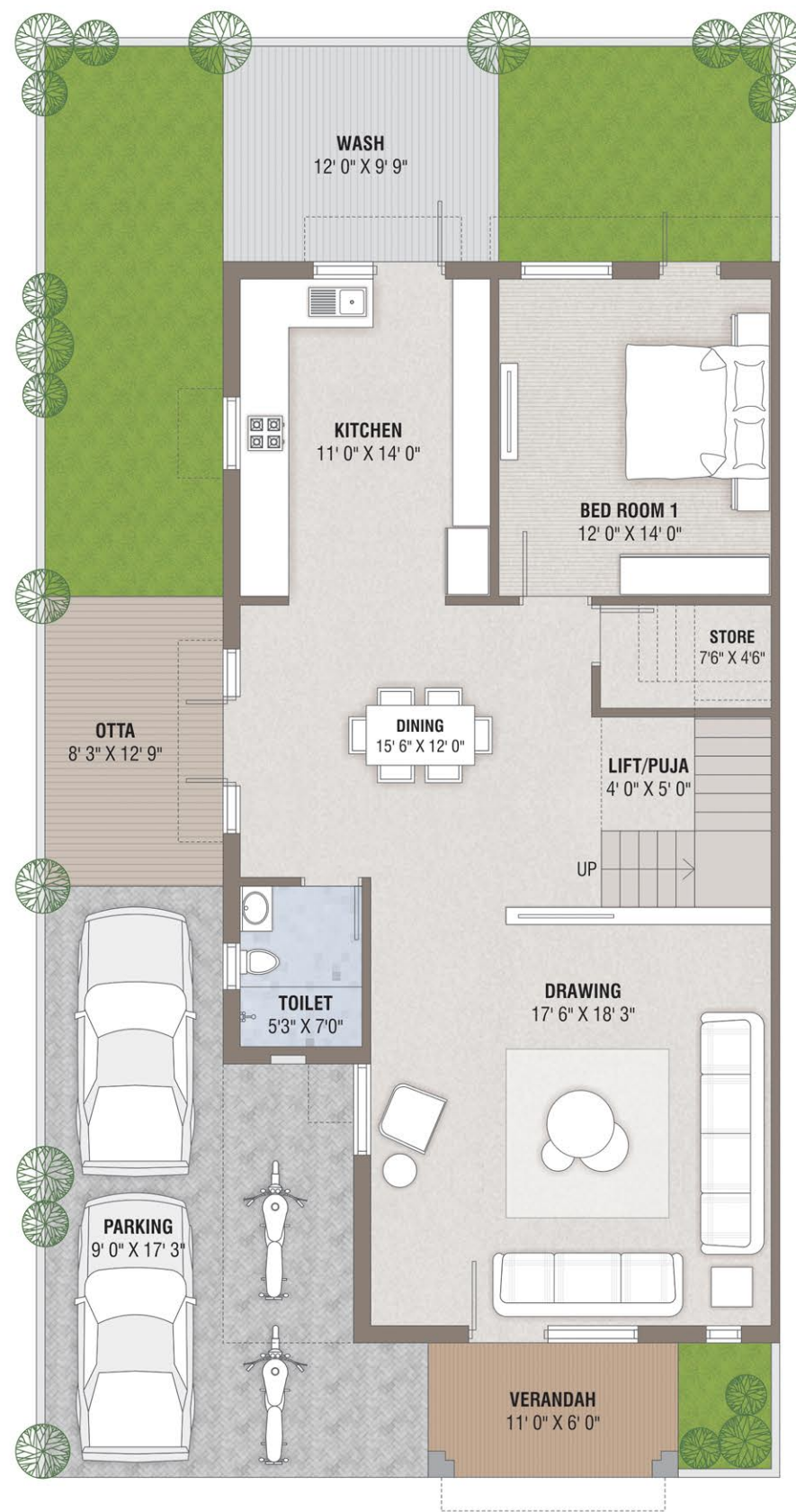
FIRST FLOOR



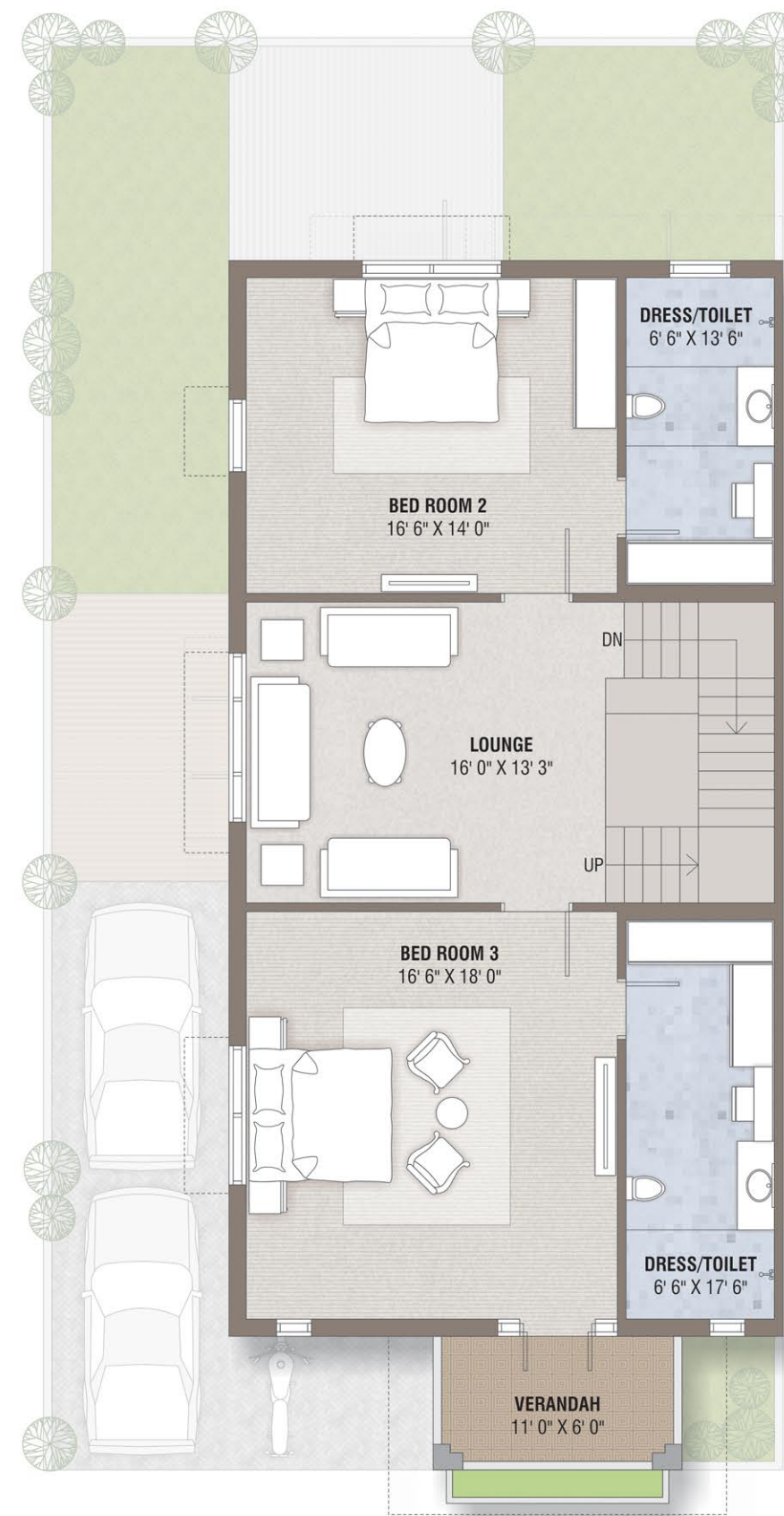
SECOND FLOOR



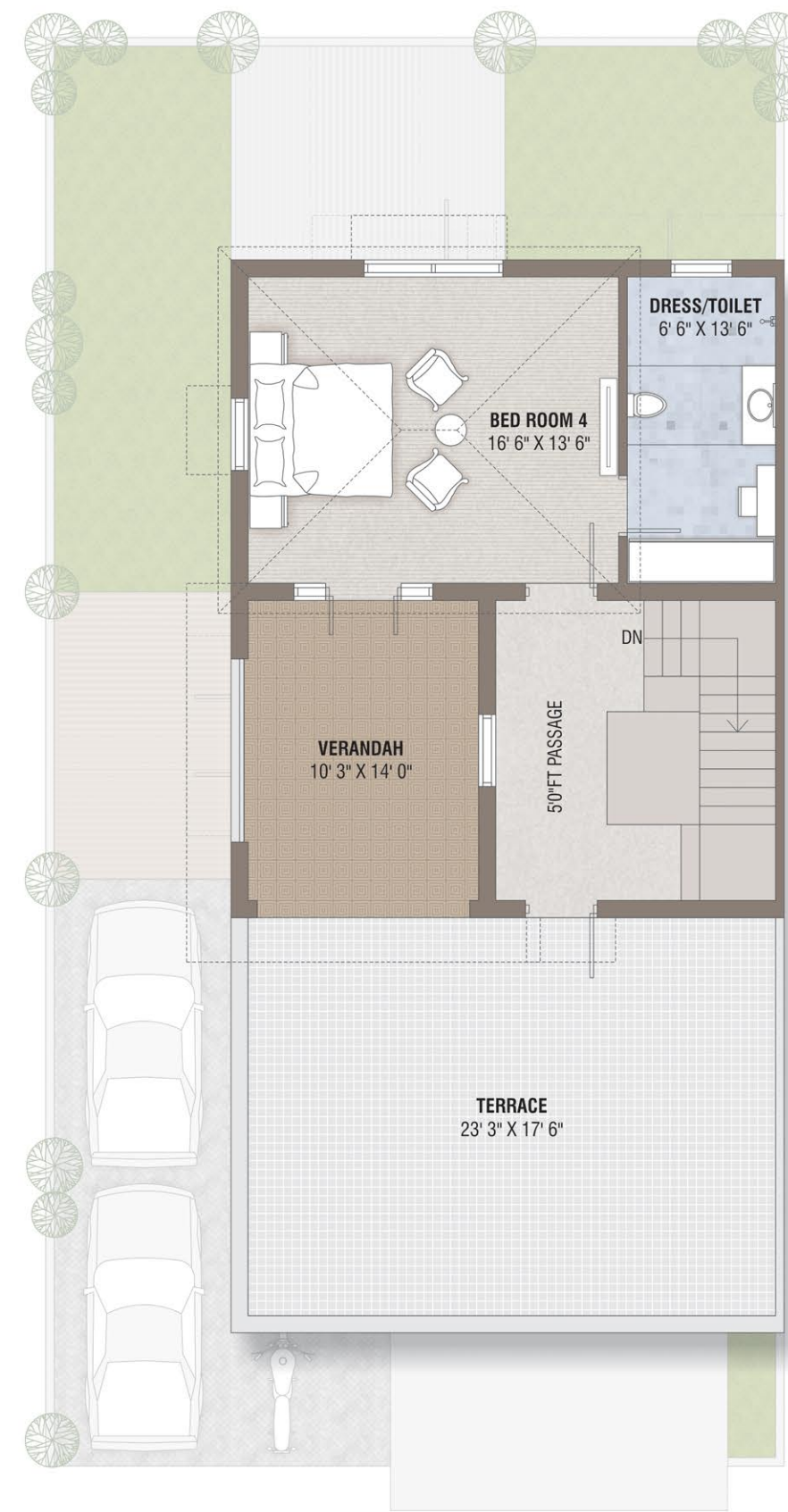
T Y P E
B



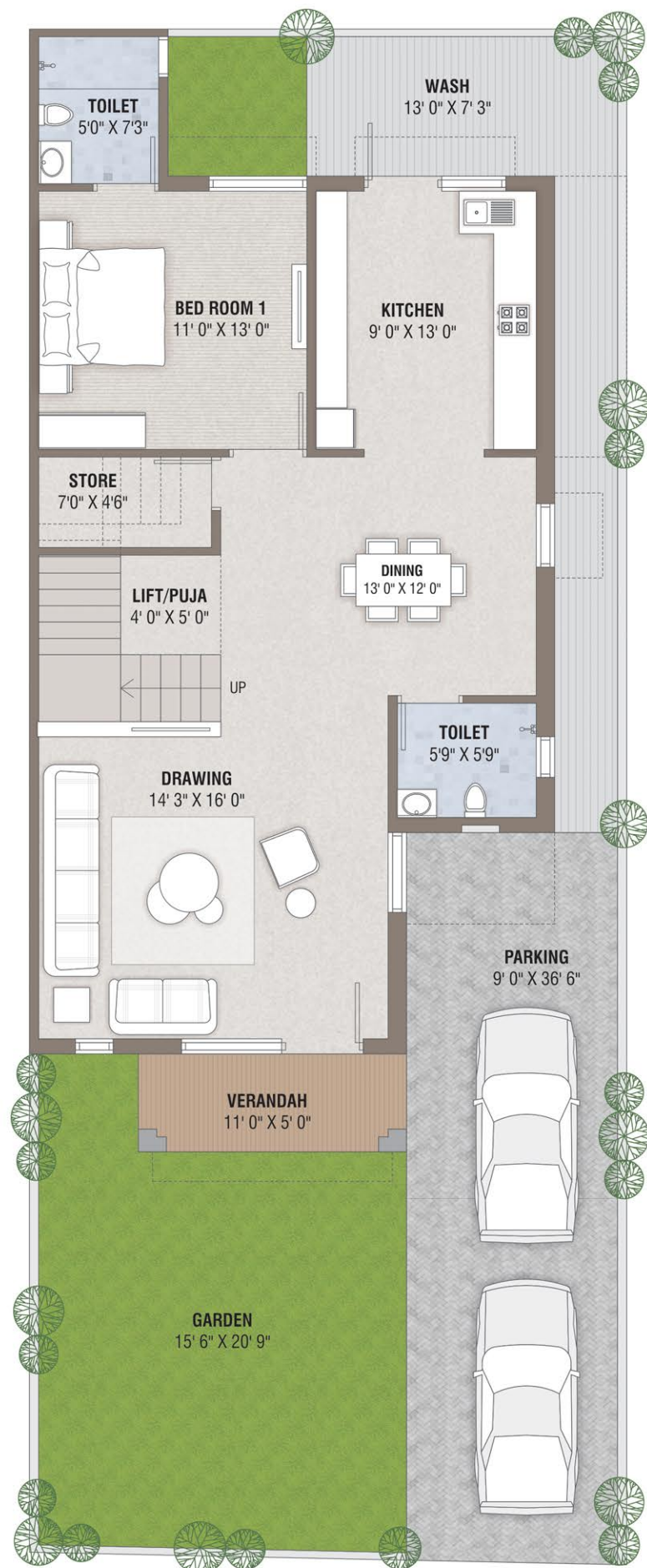
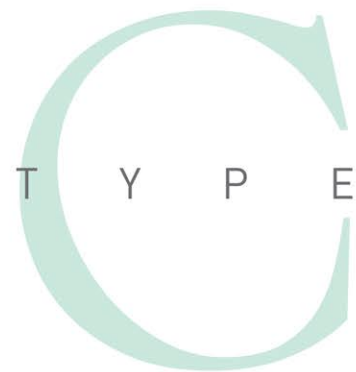
GROUND FLOOR



FIRST FLOOR



SECOND FLOOR



GROUND FLOOR



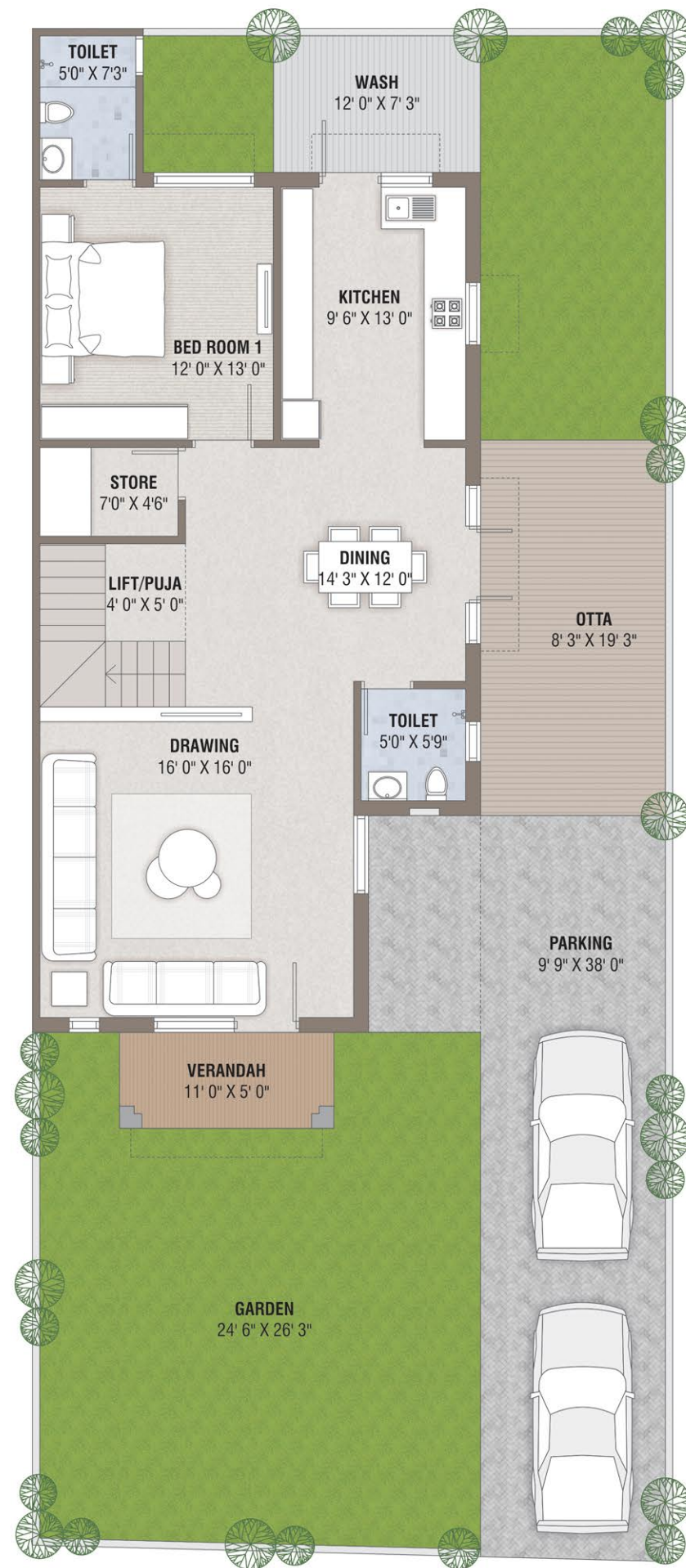
FIRST FLOOR



SECOND FLOOR



T Y P E
D



GROUND FLOOR



FIRST FLOOR



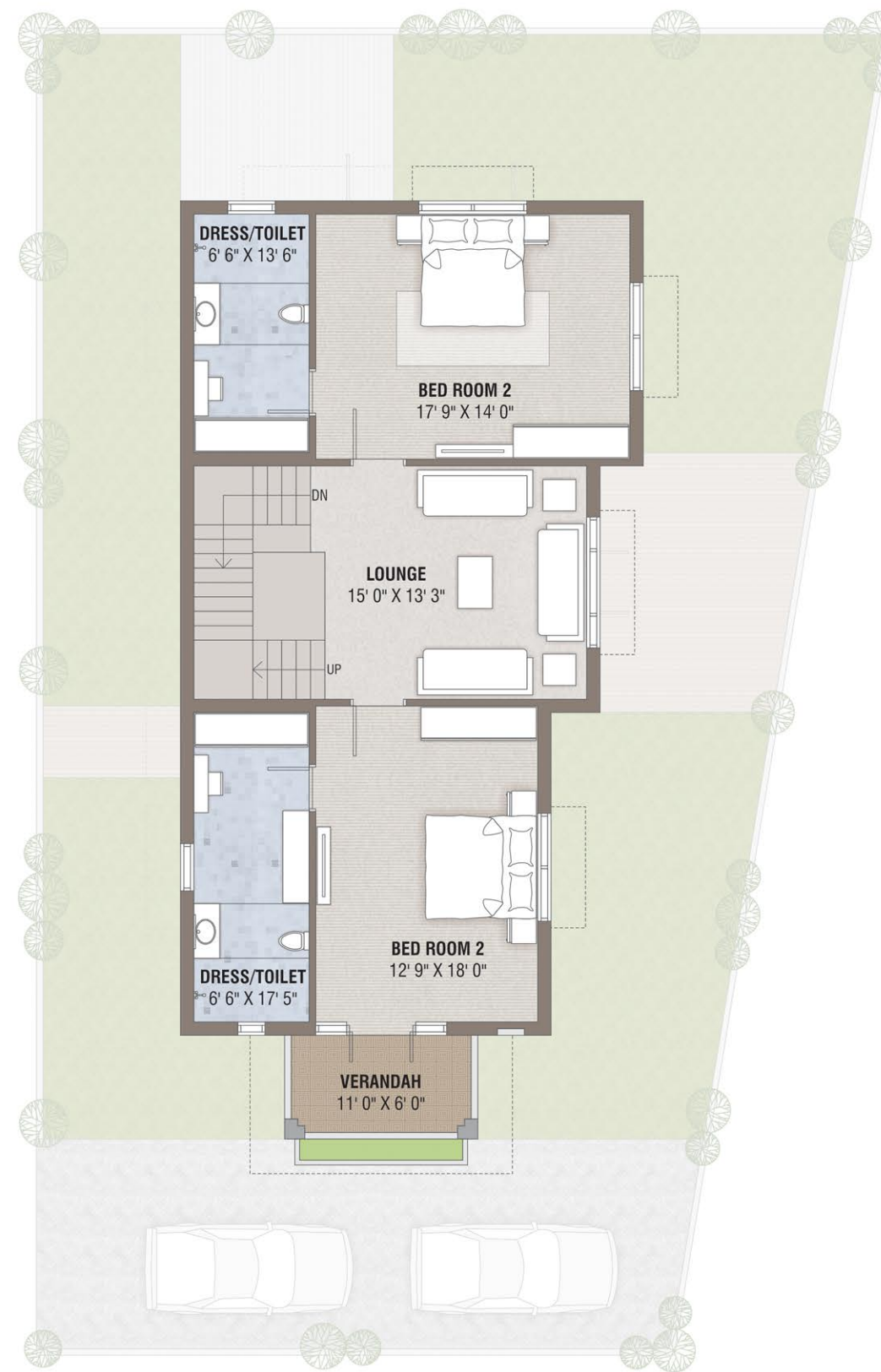
SECOND FLOOR



19
U N I T



GROUND FLOOR



FIRST FLOOR



SECOND FLOOR

GROUND FLOOR



FIRST FLOOR



SECOND FLOOR





Let's breathe
FRESHER AIR

Staying away from the hustle-bustle of the busy city and still being connected with work and leisure is the best feeling you will experience at Aurum Valley.

ADALAJ STEPWELL	2.5 KM
GIFT CITY	15 KM
VAISHNODEVI CIRCLE	10 KM
NIRMA UNIVERSITY	9.0 KM
SGVP SCHOOL	9.0 KM
TRIMANDIR	3.5 KM
KD HOSPITAL	11 KM





SPECIFICATION

FLOORING

- GOOD QUALITY VITRIFIED TILES.

KITCHEN

- GRANITE PLATFORM CERAMIC TILES.
- DADO UP TO LINTEL LEVEL.

- SINGLE BOWL S. S. SINK.

WASH

- KOTA FLOORING.

TOILET

- STANDARD BRANDED C.P. FITTING & SANITARY FITTING.

LIFT SPACE

PLUMBING

- CPVC / UPVC PIPING FOR WATER SUPPLY SYSTEM.

- OVER HEAD WATER TANK IN EACH BUNGALOWS.

MAIN DOOR

- ATTRACTIVE MAIN DOOR.
- INTERNAL FLUSH DOOR WITH WOODEN FRAME.

WINDOWS

- ANODIZED COATED ALUMINIUM SECTION / WOODEN FRAME WITH WINDOW

ELECTRIFICATION

- CONCEALED FITTING WIRING OF STANDARD (ISI MARK).
- COMPANY WITH MODULAR SWITCHES + 3 PHASE METER.

INTERIOR FINISH

- SINGLE COAT PLASTER WITH PUTTY FINISH.

EXTERIOR FINISH

- DOUBLE COAT PLASTER WITH ACRYLIC PAINT FINISH.

TERRACE

- DOUBLE COAT WATER PROOFING WITH CHINA MOSAIC FLOORING.

NOTES :

- All rights are reserved to developer for any changes in plan & specification.

- Irregular payment shall cause cancellation of booking.

- G.E.B., A.M.C., stamp duty, legal charges GST, other tax, narmada water connection, gas & maintenance deposit will be charged extra.

- Any additional liabilities due to change in the by laws, Stamp duty, Govt. Laws shall be borne by member.

- Change in external elevation shall not be permitted. internal changes shall be done only with prior permission & shall be charge extra.

- Details & dimensions in brochure are indicative & for the tentative representation only which should not be treated as legal documents.

- Subject to Ahmedabad jurisdiction.

LOCATION MAP



Scan for Location

ARCHITECT :



STRUCTURE :



LANDSCAPE :

