



SITE ADDRESS :
 Royal City Char Rasta, Nr. Mewada Green Party Plot, Shriram Chowk,
New Naroda, Ahmedabad.

A PROJECT BY

ROYAL
 GROUP
 KHODAL DEVELOPERS

CONTACT
96873 66999
98255 37856
99799 25151

ARCHITECT

Z-AXIS
 ARCHITECTS

TOUCH THE HEIGHTS OF HAPPINESS

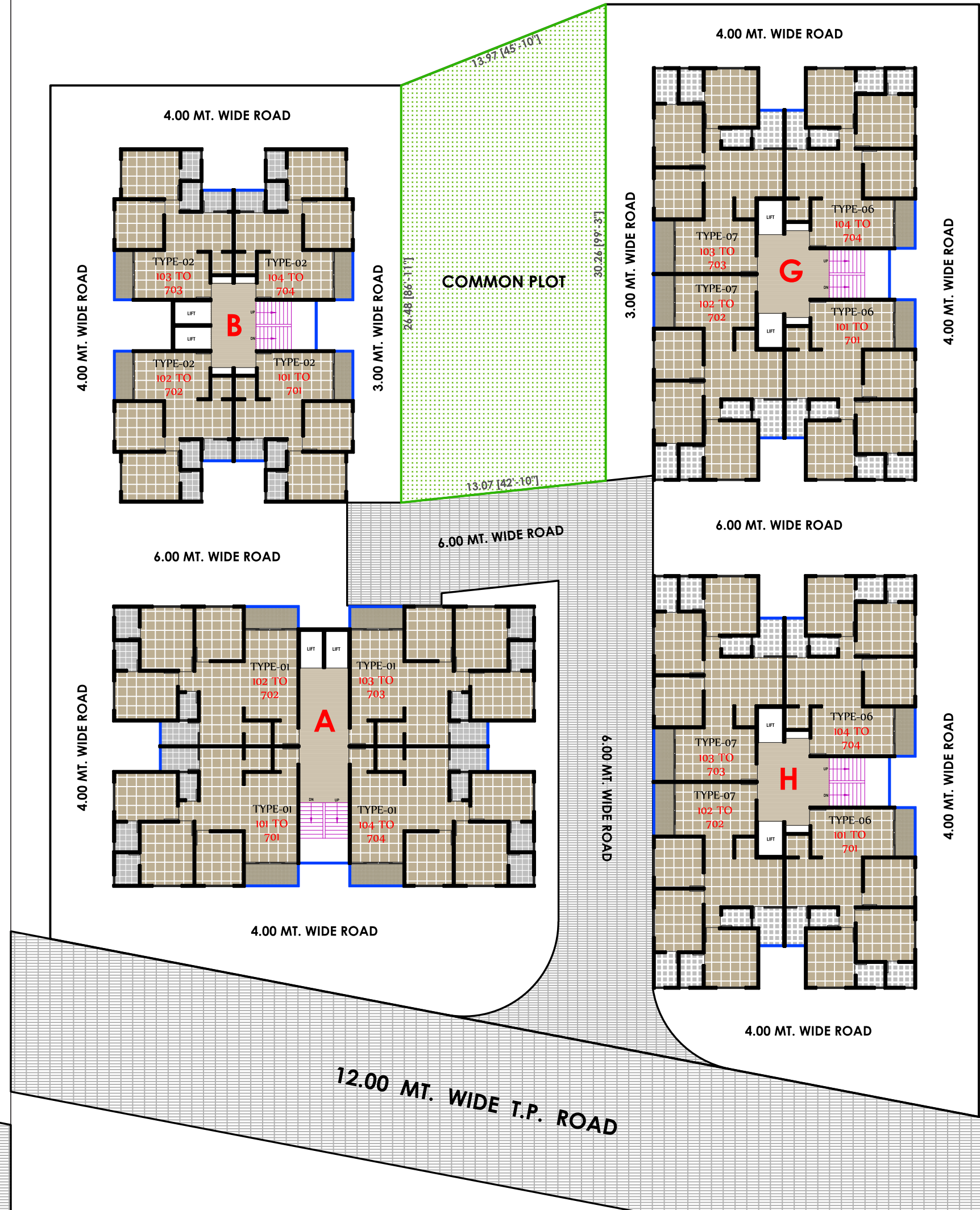


2 & 3 BHK PREMIUM LIFESTYLE APARTMENTS

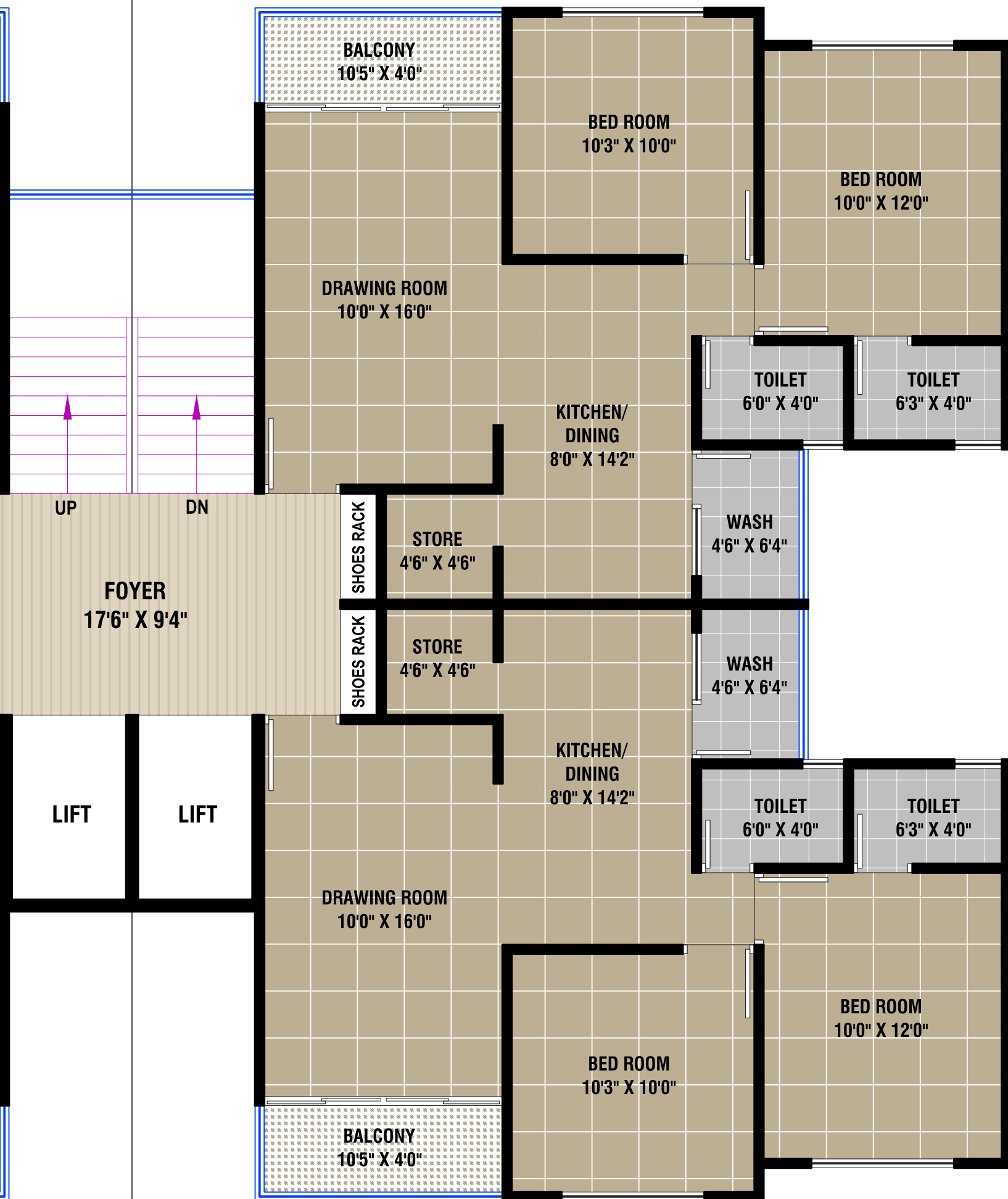
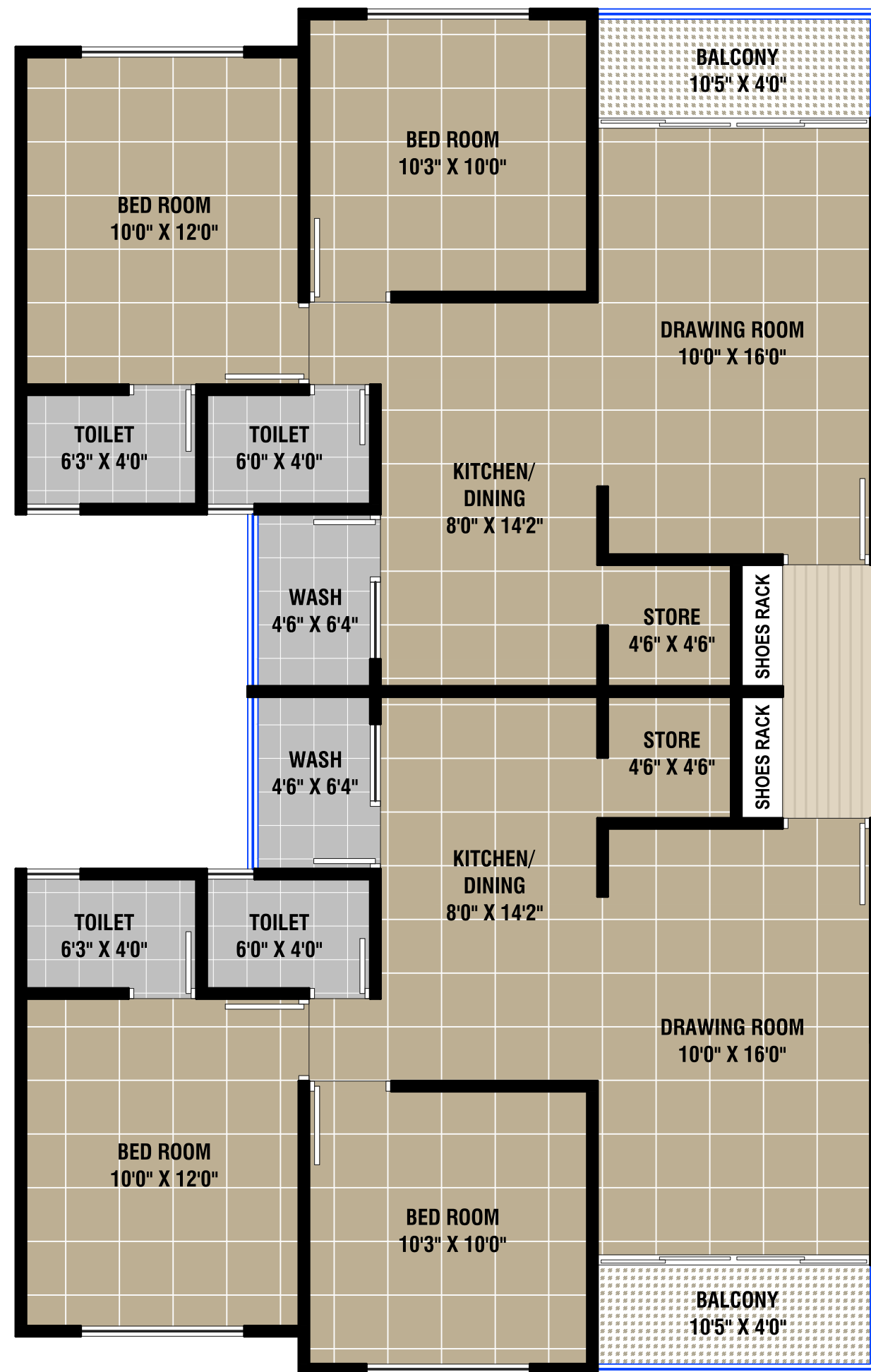


A WISH THAT **COMES TRUE**

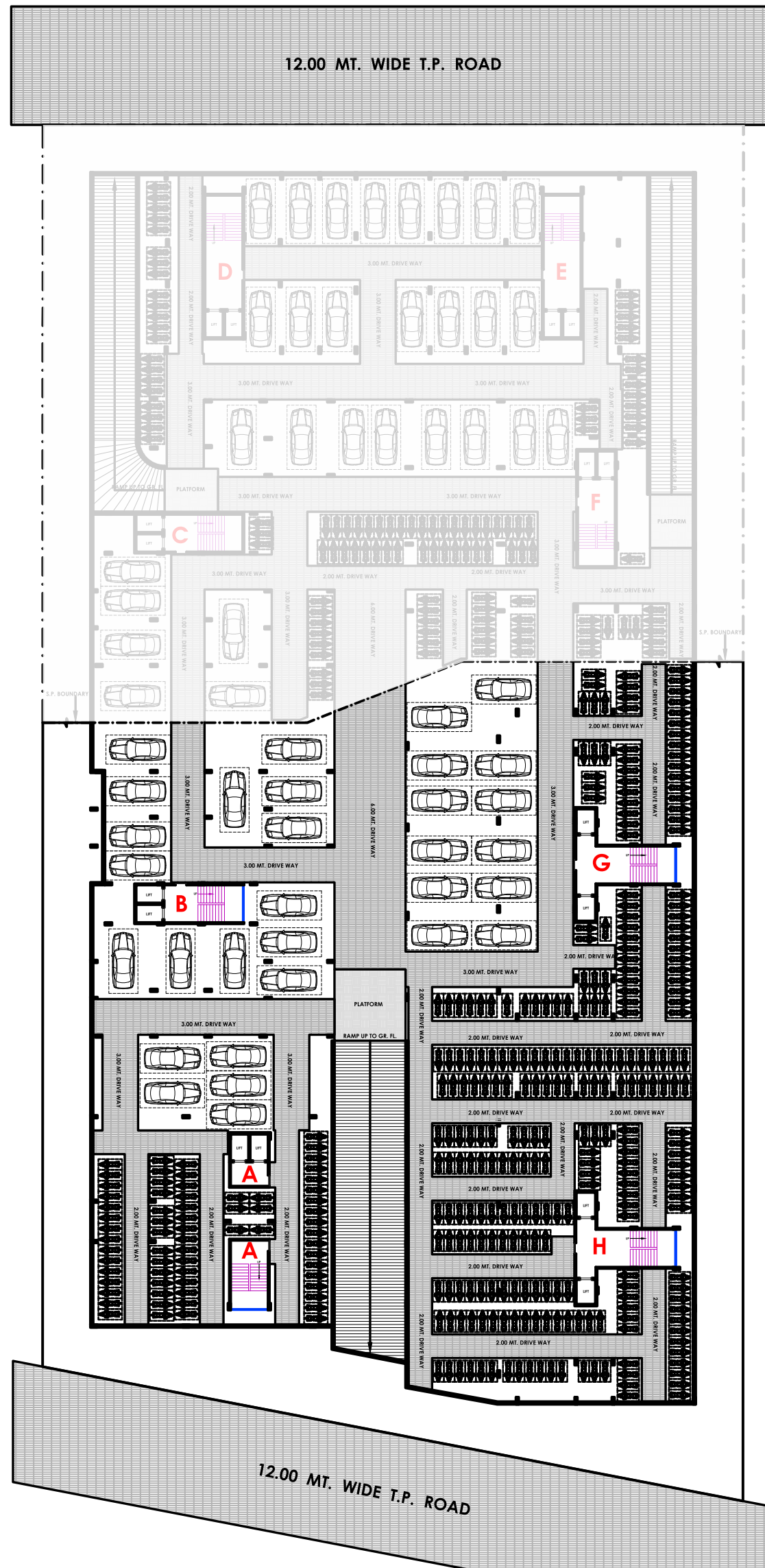
At Royal City, we offer shelters, we offer a place where living lifestyle, where everyone looks and goes "I wish". A prestigious area, surrounded by happening people where homes are not nearly spaces. Royal City, is your every wish comes true.











PROJECT AT GLANCE

FLOORING

Vitrified tiles in entire flat.

FINISHES

Internal cement finish plaster including putty finish on walls, external double coat sand face plaster with cement based water repellent paint.

KITCHEN

Kitchen platform granite top with mirror polish. Ceramic tiles dado on kitchen counter up to lintel level with stainless steel sink & R.O. Point.

TOILET

Premium designer tiles, dado up to lintel level with standard ISI fittings.

DOORS

Decorative laminated main door and all internal doors are flush door.

SECURITY

Security Cabin with Security Camera (24 X 7 Hrs.)

ELECTRIFICATION

Branded ISI modular switches concealed copper ISI wiring with adequate number of points. MCB distribution panel.

PLUMBING

ISI and UPVC pipes for water supply, PVC pipes for solid waste and drainage systems.

WINDOWS

Anodized Aluminum sliding windows with glass finishing.

TERRACE

Brick-bat concrete with china mosaic for heat reflection and thermal insulation.

NOTES : • This brochure is not as legal part of document but only for easy understanding to customer
 • Irregular payment cause for cancellation of the booking • All rights are reserved by developers to make any changes in plan, scheme elevation, dimension and other details there in to comply with statutory regulation shall be binding to all the members • Subject to Ahmedabad Jurisdiction